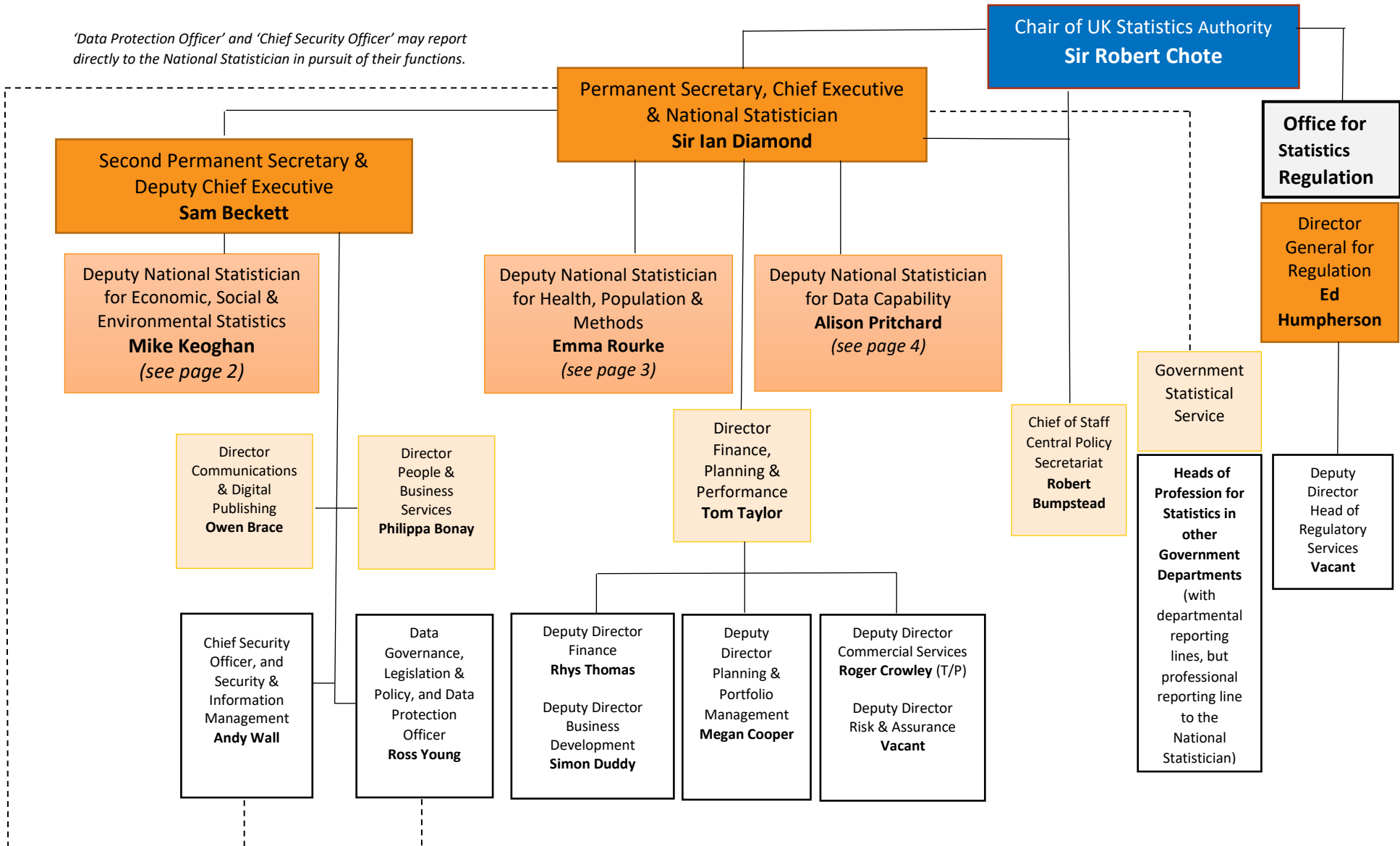


# UK Statistics Authority

*'Data Protection Officer' and 'Chief Security Officer' may report directly to the National Statistician in pursuit of their functions.*



**Economic, Social & Environment Statistics**

Second Permanent Secretary & Deputy Chief Executive  
**Sam Beckett**

Deputy National Statistician for Economic, Social & Environmental Statistics  
**Mike Keoghan**

Director Economic Statistics, Production & Analysis <b>Darren Morgan</b>	Director Macroeconomic & Environment Statistics & Analysis <b>Grant Fitzner</b>	Director Economic Statistics Change <b>Jason Zawadzki</b>	Director Public Policy Analysis <b>Liz McKeown</b>	Director Data Science Campus <b>Osama Rahman</b>	Director Communications & Digital Publishing <b>Owen Brace</b>	Director People & Business Services <b>Philippa Bonay</b>
Deputy Director National Accounts Coordination <b>Craig McLaren</b>  Deputy Director Labour Market & Households <b>David Freeman</b>  Deputy Director Surveys & Economic Indicators <b>Heather Bovill</b>  Deputy Director Financial Sector Accounts & Corporations Division <b>Rebecca Richmond</b>	Deputy Director, Prices <b>Matthew Corder</b> Deputy Director, Public Sector <b>Phillip Wales</b> Deputy Director, Global Trade & Investment <b>Scott Dennison</b> Deputy Director Economic and Microdata Insights Division <b>Vacant</b> Deputy Director Productivity, Investment and Research Division <b>Richard Heys</b> Deputy Director, Environment <b>Ian Townsend</b>	Deputy Director Development Delivery & Support <b>Adrian Chesson</b> Deputy Director Business Architecture, Transformation & Strategy (BATS) and ARIES Programme Director <b>Lisa Evans</b> Deputy Director Economic Statistics Transformation Support <b>Robert Pike</b> Deputy Director Business Statistics Transformation <b>Craig Taylor</b> Deputy Director Legacy Infrastructure Transformation <b>Luke James</b> Deputy Director Prices Transformation <b>Mike Hardie</b> Deputy Director Data Science Automation <b>Ed Sherman</b>	Deputy Director Crime, Income and Wealth <b>John Marais</b> Deputy Director Analysis Hub <b>Hugh Stickland</b> Deputy Director Statistical Coherence & Inclusion <b>Debra Prestwood</b> Deputy Director Analysis Function Strategy and ONS Synthesis and Co-ordination <b>Becca Briggs</b> Deputy Director Sub-National Statistics & Analysis <b>Emma Hickman</b> Deputy Director, ONS Local <b>Libby Richards</b>	Deputy Director Data Science Campus <b>Arthur Turrell</b> Deputy Director Data Science Campus <b>Mary Gregory</b>	Deputy Director Communications <b>Sarah Moore</b> Deputy Director Digital Content & Publishing <b>Liz Evans</b>	Deputy Director Strategy & Organisational Effectiveness <b>Lincoln Blair</b> Deputy Director People Capability <b>Sharron Ford</b> Deputy Director Strategic Resourcing <b>Anita Davis</b> Deputy Director People Practice & Insights <b>Hannah Bloxham</b>

**Health, Population & Methods**

Deputy National Statistician for Health, Population & Methods  
**Emma Rourke**

Director  
Health Analysis & Pandemic  
Insights  
**Ruth Studley (T/P)**

Director  
Census and Data Collection  
Transformation Programme  
(CDCTP) Enablement  
**Ruth Studley (T/P)**

Director  
Population Statistics  
Directorate  
**Jennet Woolford**

Director  
Methodology & Quality  
**Sarah Henry**

Deputy Director  
Data & Analysis for Social Care &  
Health Division  
**Julie Stanborough**

Deputy Director Population Health  
Strategy Operations (PHSO)  
**Fiona Dawe**

Deputy Director  
Surveillance of Health & Life  
Events  
**Sarah Crofts (T/P)**

Deputy Director  
Epidemiology & Global Health  
Analysis  
**Nick Taylor**

Deputy Director Public Health  
Monitoring & Directorate  
Management Office  
**Dan Dukes**

Deputy Director Census  
Transformation & Engagement  
(CTED)  
**Karen Campbell-White**

Programme Director –  
Programme Delivery Division  
**Kate Davies**

Deputy Director Social Statistics  
Transformation, Analysis and  
Research  
**Becky Tinsley**

Deputy Director  
Census Data Transformation  
**Jonathan Wroth-Smith (T/P)**

Deputy Director Demography  
**Richard Pereira**

Deputy Director Migration  
**Jay Lindop**

Deputy Director  
Methods & Statistical Design  
**Owen Abbott**

Deputy Director  
Quality & Improvement  
**Rachel Skentelbery**

**Data Capability**

Deputy National Statistician for Data Capability  
**Alison Pritchard**

Director  
Integrated Data Programme  
**Jason Yaxley**

Deputy Director  
Research Services and Data  
Access  
**Bill South (T/P)**

Deputy Director  
IDS Strategy  
**Dominic Hale (T/P)**

Deputy Director  
IDS Delivery & Programme  
Management  
**Justin Stafford**

Deputy Director Service  
Operations  
**Deborah Day**

Director Digital Services &  
Technology, Chief Digital &  
Information Officer  
**Simon Sandford-Taylor**

Deputy Director  
Processing & Data  
Management  
**Ruairidh MacLeod-Lyon**

Deputy Director  
Strategy & Architecture  
**Jan Jones**

Deputy Director  
Corporate IT & Services  
**Ceinwen Blake**

Deputy Director  
Cloud Infrastructure &  
Technical Design  
**Chris Penner**

Deputy Director  
Data Platform Delivery  
**Tom Scott**

Deputy Director Digital  
Delivery  
**Martin O'Brian**

Director  
Data Growth & Operations,  
Chief Data Officer  
**Fiona James**

Deputy Director  
Acquisition  
**Roland Potts**

Deputy Director  
Data Delivery, Engineering  
and Operations  
**Mike James**

Chief Data Architect  
**Charles Baird**

Director  
of  
Surveys  
**Alex Lambert**

Deputy Director  
Social Survey Collections  
**Tina Thomas**

Deputy Director  
Social Survey Delivery  
**Mike Prestwood**

Deputy Director  
Business Data Operations  
**Louise Morris**

Deputy Director Business  
Surveys and Registers  
Transformation Division  
**Phil Davies**

Deputy Director Social  
Surveys Transformation  
**Matt Hughes**

Deputy Director  
Transformation Integrated  
Shared Services  
**Sarah Tayler**