

Statistical bulletin

Labour market overview, UK: October 2019

Estimates of employment, unemployment, economic inactivity and other employment-related statistics for the UK.



Contact:
Debra Leaker
labour.market@ons.gov.uk
+44 (0)1633 455400

Release date:
15 October 2019

Next release:
12 November 2019

Table of contents

1. [Other pages in this release](#)
2. [Main points for June to August 2019](#)
3. [Analysis of the labour market](#)
4. [Data](#)
5. [Glossary](#)
6. [Measuring the data](#)
7. [Strengths and limitations](#)
8. [More about the labour market](#)
9. [You might also be interested in](#)

1 . Other pages in this release

Other commentary from the latest labour market data can be found on the following pages:

- [Employment in the UK](#)
- [Average weekly earnings in Great Britain](#)
- [Vacancies and jobs](#)

2 . Main points for June to August 2019

- The UK employment rate was estimated at 75.9%, higher than a year earlier (75.6%) but 0.2 percentage points lower than the previous quarter.
- The UK unemployment rate was estimated at 3.9%, this is lower than a year earlier (4.0%) but 0.1 percentage points higher than the previous quarter.
- The UK economic inactivity rate was estimated at 21.0%, this is lower than a year earlier (21.2%) but 0.1 percentage points higher on the previous quarter.
- Estimated annual growth in average weekly earnings for employees in Great Britain was 3.8% for both total pay (including bonuses) and regular pay (excluding bonuses).
- In real terms (after adjusting for inflation), annual growth in total pay was estimated to be 1.9% and annual growth in regular pay was estimated to be 2.0%.

The data in this bulletin come from surveys of households and businesses. It is not possible to survey every household and business each month, so these statistics are estimates based on samples.

3 . Analysis of the labour market

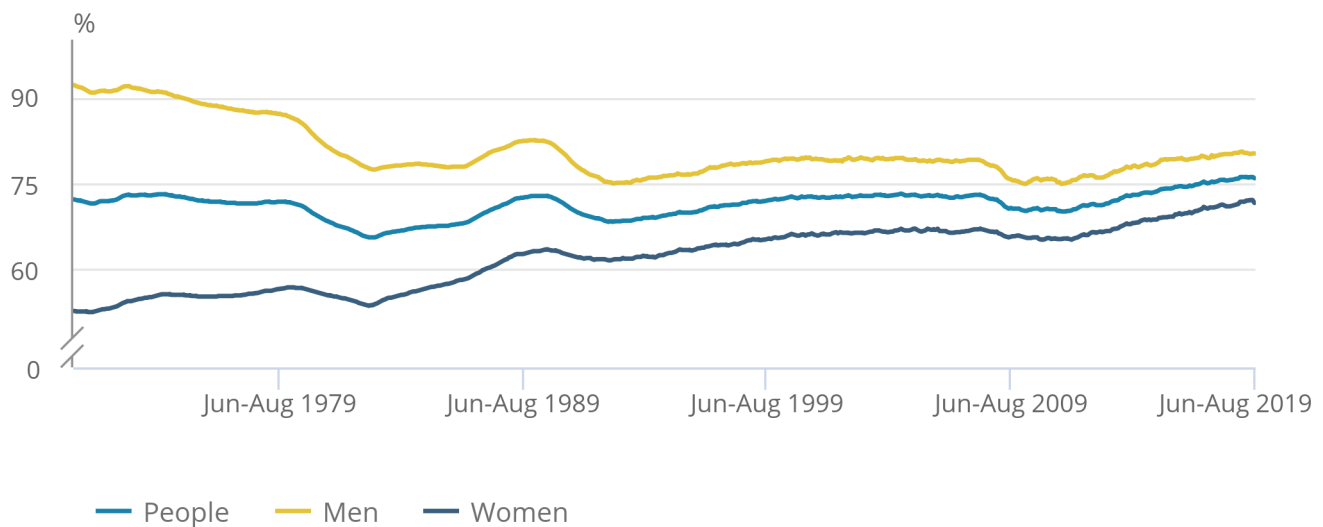
Employment

Figure 1: Employment rate for all people increased 0.3 percentage points on the year, to just below the record- high employment rate

UK employment rates (aged 16 to 64 years), seasonally adjusted, January to March 1971 to June to August 2019

Figure 1: Employment rate for all people increased 0.3 percentage points on the year, to just below the record- high employment rate

UK employment rates (aged 16 to 64 years), seasonally adjusted, January to March 1971 to June to August 2019



Source: Office for National Statistics – Labour Force Survey

[Employment](#) measures the number of people aged 16 years and over in paid work. The employment rate is the proportion of people aged between 16 and 64 years who are in paid work.

Estimated employment rates for men and women aged between 16 and 64 years have been generally increasing since early 2012 (as seen in Figure 1). For June to August 2019:

- the estimated employment rate for people was 75.9%; this is 0.3 percentage points up on the year, but 0.2 percentage points lower on the quarter
- the estimated employment rate for men was 80.2%; this is largely unchanged on the year and on the quarter
- the estimated employment rate for women was 71.6%; this is 0.6 percentage points up on the year, but 0.3 percentage points down on the quarter

The increase in the employment rate for women in recent years is partly a result of changes to the State Pension age for women, resulting in fewer women retiring between the ages of 60 and 65 years.

Estimates for June to August 2019 show 32.69 million people aged 16 years and over in employment, 282,000 more than a year earlier. This annual increase was driven mainly by women (up 202,000 on the year), those aged 50 years and over (up 287,000 on the year) and full-time workers (up 263,000 on the year). There was, however, a 56,000 decrease in employment on the quarter, which was the first quarterly decrease since August to October 2017.

More information about employment can be found in the [Employment in the UK bulletin](#), published alongside this release.

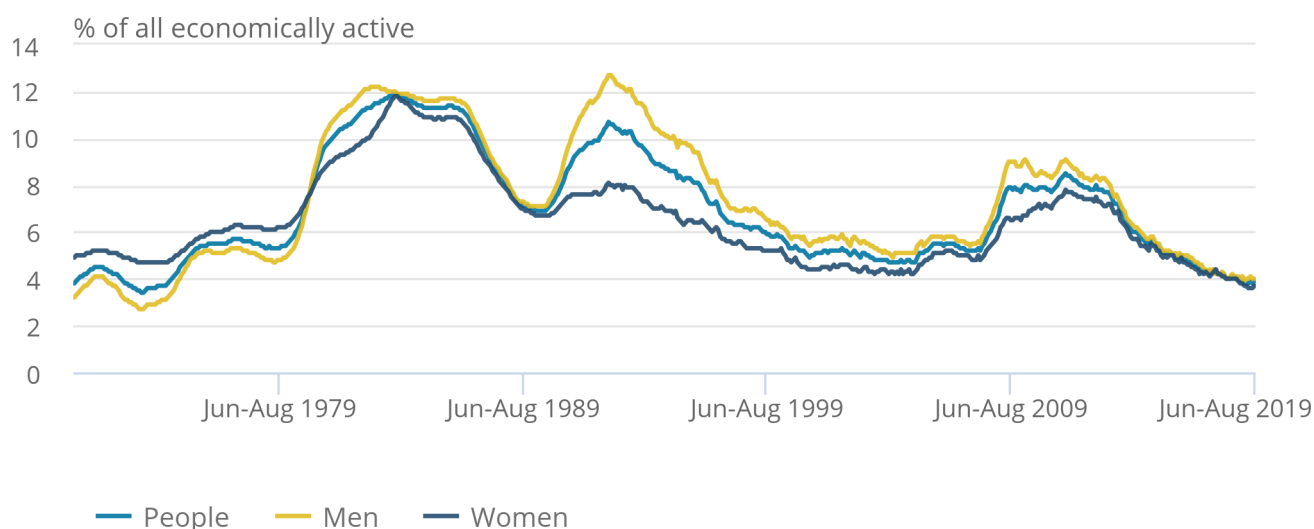
Unemployment

Figure 2: Unemployment rates have been generally falling for the last six years

UK unemployment rates (aged 16 years and over), seasonally adjusted, January to March 1971 to June to August 2019

Figure 2: Unemployment rates have been generally falling for the last six years

UK unemployment rates (aged 16 years and over), seasonally adjusted, January to March 1971 to June to August 2019



Source: Office for National Statistics – Labour Force Survey

[Unemployment](#) measures people without a job who have been actively seeking work within the last four weeks, and are available to start work within the next two weeks. The unemployment rate is not the proportion of the total population who are unemployed. It is the proportion of the economically active population (those in work plus those seeking and available to work) who are unemployed.

Estimated unemployment rates for both men and women aged 16 years and over have been generally falling since late 2013 but have levelled off in recent periods (as seen in Figure 2).

For June to August 2019:

- the estimated UK unemployment rate for all people was 3.9%, lower than a year earlier (4.0%) but 0.1 percentage points higher than the previous quarter
- the estimated UK unemployment rate for men was 4.0%, which was 0.1 percentage points lower than last year but 0.1 percentage points higher than the previous quarter
- the estimated UK unemployment rate for women was 3.7%, down 0.3 percentage points on a year earlier but largely unchanged on the previous quarter

More information about unemployment can be found in the [Employment in the UK bulletin](#), published alongside this release.

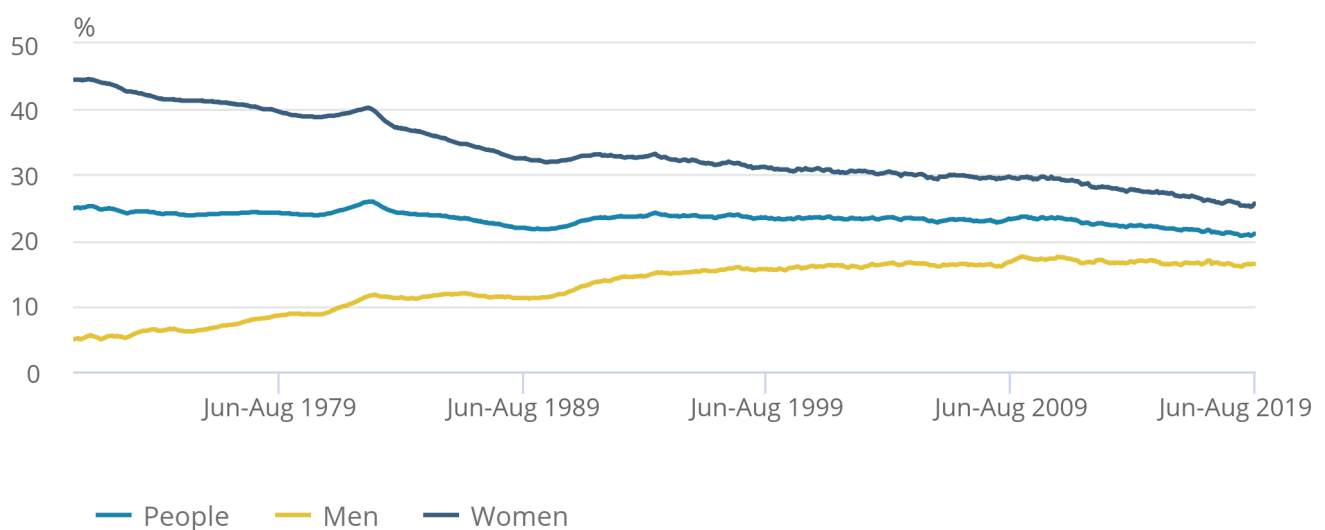
Economic inactivity

Figure 3: Overall inactivity rate for people aged between 16 and 64 years was 21.0%, down 0.2 percentage points on the year

UK economic inactivity rate (all people aged 16 to 64 years), seasonally adjusted, January to March 1971 to June to August 2019

Figure 3: Overall inactivity rate for people aged between 16 and 64 years was 21.0%, down 0.2 percentage points on the year

UK economic inactivity rate (all people aged 16 to 64 years), seasonally adjusted, January to March 1971 to June to August 2019



Source: Office for National Statistics – Labour Force Survey

[Economic inactivity](#) measures people without a job but who are not classed as unemployed because they have not been actively seeking work within the last four weeks and/or they are unable to start work within the next two weeks. Our headline measure of economic inactivity is for those aged from 16 to 64 years.

Since comparable records began in 1971, the economic inactivity rate for all people aged from 16 to 64 years has been generally falling (although it increased during recessions). This is because of a gradual fall in the economic inactivity rate for women.

For people aged from 16 to 64 years, for June to August 2019:

- the estimated economic inactivity rate for all people was 21.0%, down 0.2 percentage points on the year but up 0.1 percentage points on the previous quarter
- the estimated economic inactivity rate for men was 16.4%, largely unchanged on the previous year and on the previous quarter
- the estimated economic inactivity rate for women was 25.6%, down 0.4 percentage points on the year but up 0.3 percentage points on the previous quarter

Estimates for June to August 2019 showed 8.68 million people aged between 16 and 64 years not in the labour force (economically inactive). This was 63,000 fewer than a year earlier and 362,000 fewer than five years earlier.

More information about economic inactivity can be found in the [Employment in the UK bulletin](#), published alongside this release.

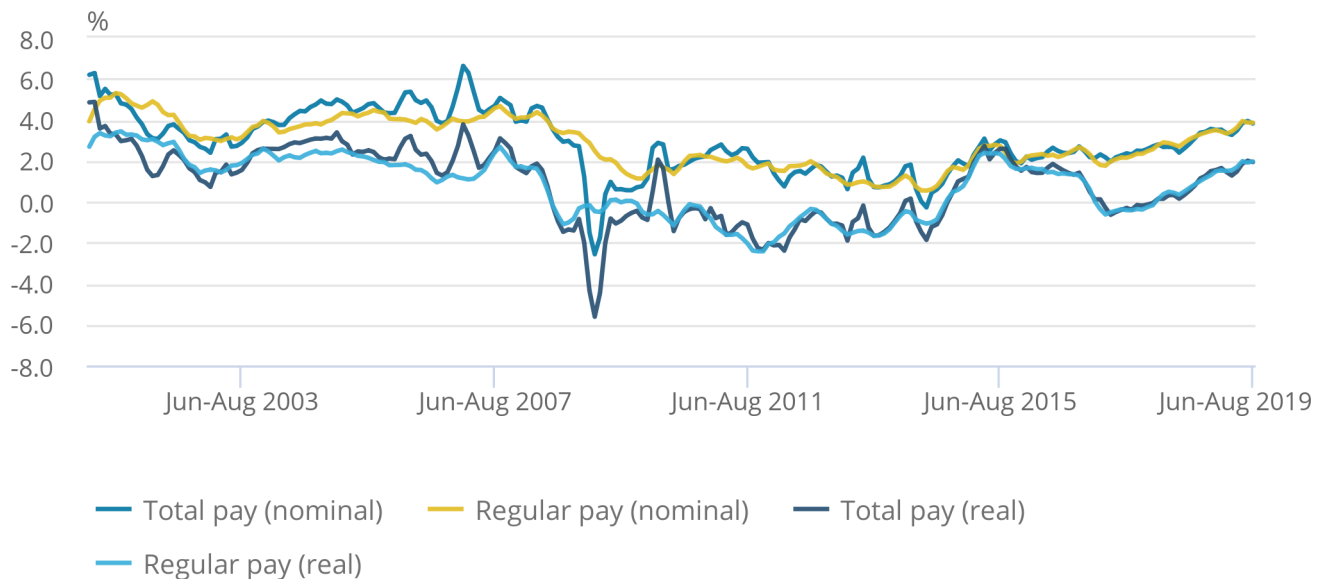
Earnings growth

Figure 4: Pay for employees (including bonuses) has grown by 1.9% on the year when adjusted for inflation; pay excluding bonuses has grown by 2.0%, bonuses grew by 1.9%

Great Britain average weekly earnings annual growth rates, seasonally adjusted, January to March 2001 to June to August 2019

Figure 4: Pay for employees (including bonuses) has grown by 1.9% on the year when adjusted for inflation; pay excluding bonuses has grown by 2.0%, bonuses grew by 1.9%

Great Britain average weekly earnings annual growth rates, seasonally adjusted, January to March 2001 to June to August 2019



Source: Office for National Statistics – Monthly Wages and Salaries Survey

The earnings estimates are not just a measure of pay rises, as they also reflect changes in the number of paid hours worked and changes in the structure of the workforce; for example, more high-paid jobs would have an upward effect on earnings growth rates.

The rate of pay growth has trended upwards since March to May 2017, to be close to 4%, which is the highest nominal pay growth rate since 2008. However, in June to August 2019, growth dropped slightly to 3.8% for both total pay and regular pay.

In real terms, annual pay growth has been positive since December 2017 to February 2018 and is now 1.9% for total pay and 2% for regular pay.

For August 2019, average regular pay, before tax and other deductions, for employees in Great Britain was estimated at:

- £509 per week in nominal terms
- £472 per week in real terms (constant 2015 prices), higher than the estimate for a year earlier (£462 per week), but £1 (0.3%) lower than the pre-recession peak of £473 per week for April 2008

The equivalent figures for total pay in real terms are £502 per week in August 2019 and £525 in February 2008, a 4.6% difference.

More information about earnings growth can be found in the [Average weekly earnings in Great Britain bulletin](#), published alongside this release.

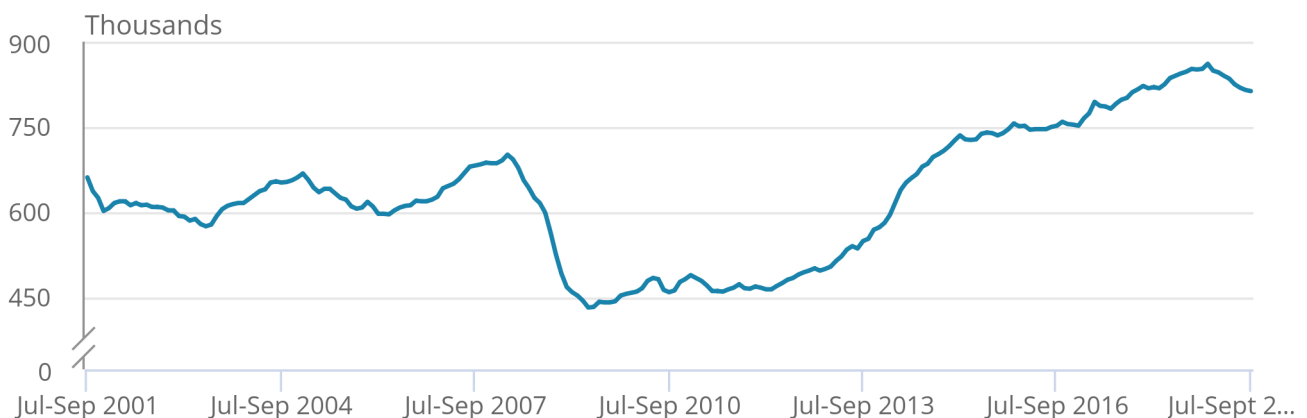
Vacancies

Figure 5: The number of vacancies has been generally increasing since 2012 although it has been falling since early 2019

Number of vacancies in the UK, seasonally adjusted, July to September 2001 to July to September 2019

Figure 5: The number of vacancies has been generally increasing since 2012 although it has been falling since early 2019

Number of vacancies in the UK, seasonally adjusted, July to September 2001 to July to September 2019



Source: Office for National Statistics – Vacancy Survey

The estimated [number of vacancies](#) in the UK fell sharply during the recession of 2008 to 2009. Since 2012, it has generally increased although it has been falling since early 2019. For July to September 2019, there were an estimated 813,000 vacancies in the UK, 11,000 fewer than for the previous quarter (April to June 2019) and 34,000 fewer than for the previous year.

More information about vacancies can be found in the [Vacancies and jobs in the UK bulletin](#), published alongside this release.

4 . Data

[Summary of labour market statistics](#)

Dataset A01 | Released 15 October 2019

Estimates of employment, unemployment and other employment-related statistics for the UK.

[Employment, unemployment and economic inactivity](#)

Dataset A02 SA | Released 15 October 2019

Estimates of UK employment, unemployment and inactivity for people aged 16 years and over and people aged from 16 to 64 years based on the Labour Force Survey.

[Average weekly earnings](#)

Dataset EARN01 | Released 15 October 2019

Estimates of Great Britain earnings growth based on the Monthly Wages and Salaries Survey.

[Vacancies by industry](#)

Dataset VACS02 | Released 15 October 2019

Estimates of the number of UK job vacancies for each industry, based on a survey of businesses.

Table 1: Summary of UK employment estimates for June to August 2019, seasonally adjusted

	Estimate (seasonally adjusted)	Sampling variability of estimate (1)	Change on quarter	Sampling variability of change on quarter (1)	Change on year	Sampling variability of change on year (1)
Employment (thousands of people aged 16 years and over)	32,693	± 179	-56	± 151	282	± 238
Employment rate (% , aged 16 to 64 years)	75.9%	± 0.4	-0.2	± 0.3	0.3	± 0.5
Unemployment (thousands of people aged 16 years and over)	1,314	± 71	22	± 74	-49	± 99
Unemployment rate (% , aged 16 years and over)	3.9%	± 0.2	0.1	± 0.2	-0.2	± 0.3
Economically inactive (thousands of people aged 16 to 64 years)	8,676	± 156	57	± 134	-63	± 208
Economic inactivity rate (% , aged 16 to 64 years)	21.0%	± 0.4	0.1	± 0.3	-0.2	± 0.5

Source: Office for National Statistics - Labour Force Survey

Notes

1. The sampling variability estimates are for 95% confidence intervals and are calculated on data that are not seasonally adjusted. [Back to table](#)

Table 2: Summary of employee earnings, Great Britain, June to August 2019, seasonally adjusted

	Annual growth rate (estimate)	Sampling variability of growth rate (1)
Total pay (nominal)	3.9	± 0.5
Total pay (real)	1.9	
Regular pay (nominal)	3.9	± 0.5
Regular pay (real)	2.0	

Source: Office for National Statistics - Monthly Wages and Salaries Survey

Notes

1. The sampling variability estimates are for 95% confidence intervals (where we are 95% certain the true value lies within the specified range) and are calculated on not seasonally adjusted data for single month growth rates for the 12 months from January to December 2014. It is not possible to calculate confidence intervals for growth rates in real terms. [Back to table](#)

5 . Glossary

Average weekly earnings

[Average weekly earnings](#) measures money paid by employers to employees in Great Britain before tax and other deductions from pay. The estimates are not just a measure of pay rises as they also reflect, for example, changes in the overall structure of the workforce. More high-paid jobs in the economy would have an upward effect on the earnings growth rate.

Economic inactivity

People not in the labour force (also known as [economically inactive](#)) are not in employment but do not meet the internationally accepted definition of unemployment because they have not been seeking work within the last four weeks and/or they are unable to start work in the next two weeks. The economic inactivity rate is the proportion of people aged from 16 to 64 years who are not in the labour force.

Employment

[Employment](#) measures the number of people in paid work and differs from the number of jobs because some people have more than one job. The employment rate is the proportion of people aged from 16 to 64 years who are in paid work.

Unemployment

[Unemployment](#) measures people without a job who have been actively seeking work within the last four weeks and are available to start work within the next two weeks. The unemployment rate is not the proportion of the total population who are unemployed. It is the proportion of the economically active population (those in work plus those seeking and available to work) who are unemployed.

Vacancies

[Vacancies](#) are defined as positions for which employers are actively seeking recruits from outside their business or organisation. The estimates are based on the Vacancy Survey – a survey of businesses designed to provide estimates of the stock of vacancies across the economy, excluding agriculture, forestry and fishing (a small sector for which the collection of estimates would not be practical).

A more detailed [Glossary](#) is available.

6 . Measuring the data

The employment, unemployment and economic inactivity estimates rely on data collected from the Labour Force Survey (a survey run by field interviewers with people across the UK every month).

The [Labour Force Survey performance and quality monitoring reports](#) provide data on response rates and other quality-related issues for the Labour Force Survey (LFS), including breakdowns of response by LFS wave, region and by question-specific response issues.

The average weekly earnings and vacancies estimates rely on data collected from surveys of employers.

The following Quality and Methodology Information (QMI) reports pull together important qualitative information on the various dimensions of data quality, as well as providing a summary of the methods used to compile the output:

- [Labour Force Survey Quality and Methodology Information](#)
- [Average weekly earnings \(AWE\) Quality and Methodology Information](#)
- [Vacancy Survey Quality and Methodology Information](#)

7 . Strengths and limitations

Re-assessment of labour market estimates

The Office for Statistics Regulation (OSR) has a planned [reassessment of Labour Market employment estimates](#), which aims to publish a set of recommendations in early 2020. As part of this assessment, the OSR may contact you to:

- gather feedback on your use of labour market estimates
- listen to your suggestions on ways we can build on our current engagement opportunities
- capture examples of where we have worked (or are working) together to improve communication and use of our statistics

The three sections of the recommendations report will cover trustworthiness, quality and value. The OSR will coordinate engagement with you but please feel free to contact David Freeman (david.freeman@ons.gov.uk) or Matt Hughes (matthew.hughes@ons.gov.uk) if you wish to discuss further.

Accuracy of the statistics: estimating and reporting uncertainty

The figures in this bulletin come from surveys, which gather information from a sample rather than from the whole population. The sample is designed to be as accurate as possible given practical limitations such as time and cost constraints. Results from sample surveys are always estimates, not precise figures. This can have an impact on how changes in the estimates should be interpreted, especially for short-term comparisons.

As the number of people available in the sample gets smaller, the variability of the estimates that we can make from that sample size gets larger. Estimates for small groups (for example, unemployed people aged from 16 to 17 years), which are based on quite small subsets of the Labour Force Survey sample, are less reliable and tend to be more volatile than for larger aggregated groups (for example, the total number of unemployed people).

In general, changes in the numbers (and especially the rates) reported in this bulletin between three-month periods are small, and are not usually greater than the level that can be explained by sampling variability. Short-term movements in reported rates should be considered alongside longer-term patterns in the series and corresponding movements in other sources to give a fuller picture.

Further information is available in [A guide to labour market statistics](#).

Where to find data about uncertainty and reliability

[Dataset A11](#) shows sampling variabilities for estimates derived from the Labour Force Survey.

Sampling variability information for average weekly earnings growth rates is available from the “Sampling Variability” worksheets within [datasets EARN01](#) and [EARN03](#).

The sampling variability of the three-month average vacancies level is around plus or minus 1.5% of that level. Information on revisions is available in the [labour market statistics revisions policy](#).

8 . More about the labour market

[Trends in self-employment in the UK](#)

Article | Released 7 February 2018

Analysing the characteristics, income and wealth of the self-employed.

[Sickness absence in the labour market](#)

Article | Released 30 July 2018

The latest figures for 2017 show that the average number of sickness absence days that UK workers take has almost halved since 1993.

[People who have never worked](#)

Article | Released 28 February 2019

Analysis of the number of people who have never done paid work, their reasons for not working and some of their personal characteristics.

9 . You might also be interested in

[Labour market economic commentary](#)

Article | Released 15 October 2019

Additional economic analysis of the latest UK labour market headline statistics and long-term trends.

[Regional labour market statistics](#)

Bulletin | Released 15 October 2019

Regional breakdowns of changes in UK employment, unemployment and economic inactivity.

[Young people not in education, employment or training \(NEET\)](#)

Bulletin | Released 22 August 2019

Estimates of people in the UK aged from 16 to 24 years who are not in education, employment or training.

[Working and workless households in the UK](#)

Bulletin | Released 28 August 2019

The economic status of households in the UK and the people living in them, in households where at least one person is aged from 16 to 64 years.

Index of Tables

The table below provides an index of the tables appearing in this Statistical Bulletin and it shows how these table numbers match up with the Excel spreadsheet datasets which are available on the website at:

<https://www.ons.gov.uk/employmentandlabourmarket/peopleinwork/employmentandemployeetypes/bulletins/uklabourmarket/October2019/relateddata>

Statistical Bulletin table number	Table description	Dataset
	SUMMARY	
1	Labour Force Survey Summary	Dataset A02 SA
2 (*)	Labour market status by age group	Dataset A05 SA
	EMPLOYMENT AND JOBS	
3	Full-time, part-time & temporary workers	Dataset EMP01 SA
4	Public and private sector employment	Dataset EMP02
4(1)	Public sector employment by industry	Dataset EMP03
5	Workforce jobs summary	Dataset JOBS01
6 (**)	Workforce jobs by industry	Dataset JOBS02
7	Actual weekly hours worked	Dataset HOUR01 SA
7(1)	Usual weekly hours worked	Dataset HOUR02 SA
	NON-UK WORKERS	
8	Employment by country of birth and nationality	Dataset EMP06
8(1)	Unemployment and economic inactivity by country of birth and nationality	Dataset A12
	UNEMPLOYMENT	
9	Unemployment by age and duration	Dataset UNEM01 SA
	ECONOMIC ACTIVITY AND INACTIVITY	
10(*)	Economic activity by age	Dataset A05 SA
11	Economic inactivity by reason	Dataset INAC01 SA
12	Labour market and educational status of young people	Dataset A06 SA
	EARNINGS	
13	Average Weekly Earnings (nominal) - Total pay	Dataset EARN01
14	Average Weekly Earnings (nominal) - Bonus pay	Dataset EARN01
15	Average Weekly Earnings (nominal) - Regular pay	Dataset EARN01
16	Average Weekly Earnings real and nominal (summary table)	Dataset EARN01
	INTERNATIONAL SUMMARY	
17	International comparisons of employment and unemployment	Dataset A10
	LABOUR DISPUTES	
18	Labour disputes	Dataset LABD01
	VACANCIES	
19	Vacancies by size of business	Dataset VACS03
20	Vacancies and unemployment	Dataset VACS01
21	Vacancies by industry	Dataset VACS02
	REDUNDANCIES	
22	Redundancies levels and rates	Dataset RED01 SA
	REGIONAL SUMMARY	
23	Regional labour market summary	Dataset A07

(*) Tables 2 and 10 in the Statistical Bulletin pdf file have been amalgamated into one spreadsheet (Dataset A05 SA).

(**) Table JOBS02 provides more detail than Table 6 in the Statistical Bulletin pdf file.

The following symbols are used in the tables: p provisional, r revised, .. Not available, * suppressed due to small sample size.

The four-character identification codes appearing in the tables are the ONS references for the data series appearing in the Labour Market Statistics dataset which is available on the website at:

<https://www.ons.gov.uk/employmentandlabourmarket/peopleinwork/employmentandemployeetypes/datasets/labourmarketstatistics>

Summary of labour market statistics published on 15 October 2019

Series	Reference period	Latest estimate	Last time higher	Last time lower	Comparable data begins in
Employment level (aged 16 and over)	Jun-Aug 2019	32.693 million	May-Jul 2019 (32.777 million)	Oct-Dec 2018 (32.597 million)	Jan-Mar 1971
Employment rate (aged 16 to 64)	Jun-Aug 2019	75.9%	May-Jul 2019 (76.1%)	Oct-Dec 2018 (75.8%)	Jan-Mar 1971
Unemployment level (aged 16 and over)	Jun-Aug 2019	1.314 million	Apr-Jun 2019 (1.329 million)	May-Jul 2019 (1.294 million)	Jan-Mar 1971
Unemployment rate (aged 16 and over)	Jun-Aug 2019	3.9%	Oct-Dec 2018 (4%)	May-Jul 2019 (3.8%)	Jan-Mar 1971
Inactivity level (aged 16 to 64)	Jun-Aug 2019	8.676 million	Jul-Sep 2018 (8.726 million)	May-Jul 2019 (8.587 million)	Jan-Mar 1971
Inactivity rate (aged 16 to 64)	Jun-Aug 2019	21.0%	Jul-Sep 2018 (21.1%)	May-Jul 2019 (20.8%)	Jan-Mar 1971
Average Earnings (total pay - nominal)	Jun-Aug 2019	3.8%	May-Jul 2019 (3.9%)	Mar-May 2019 (3.5%)	Jan-Mar 2001
Average Earnings (regular pay - nominal)	Jun-Aug 2019	3.8%	May-Jul 2019 (3.9%)	Mar-May 2019 (3.6%)	Jan-Mar 2001
Average Earnings (total pay - real)	Jun-Aug 2019	1.9%	May-Jul 2019 (2.0%)	Mar-May 2019 (1.5%)	Jan-Mar 2001
Average Earnings (regular pay - real)	Jun-Aug 2019	2.0%	Jul-Sep 2015 (2.1%)	May-Jul 2019 (1.9%)	Jan-Mar 2001
Vacancies level	Jul-Sep 2019	813,000	Jun-Aug 2019 (815,000)	Sep-Nov 2017 (811,000)	Apr-Jun 2001

SUMMARY

1 Summary of headline LFS¹ indicators

United Kingdom (thousands) seasonally adjusted

		LFS household population ¹		Headline indicators					
		Employment				Unemployment		Inactivity	
		Level	Rate ²	Level	Rate ³	Level	Rate ⁴	Level	Rate ⁴
		All aged 16 & over	All aged 16 to 64	All aged 16 & over	All aged 16 to 64	All aged 16 & over	All aged 16 to 64	All aged 16 to 64	All aged 16 to 64
		MGSL	LF2O	MGRZ	LF24	MGSC	MG SX	LF2M	LF2S
People									
	Jun-Aug 2017	52,763	41,165	32,104	75.1	1,452	4.3	8,806	21.4
	Jun-Aug 2018	53,047	41,258	32,410	75.6	1,363	4.0	8,740	21.2
	Sep-Nov 2018	53,116	41,277	32,542	75.8	1,370	4.0	8,650	21.0
	Dec-Feb 2019	53,184	41,297	32,721	76.1	1,343	3.9	8,536	20.7
	Mar-May 2019	53,252	41,317	32,749	76.0	1,292	3.8	8,619	20.9
	Jun-Aug 2019	53,321	41,339	32,693	75.9	1,314	3.9	8,676	21.0
	Change on quarter	69	22	-56	-0.2	22	0.1	57	0.1
	Change %	0.1	0.1	-0.2		1.7		0.7	
	Change on year	274	81	282	0.3	-49	-0.2	-63	-0.2
	Change %	0.5	0.2	0.9		-3.6		-0.7	
Men									
		MGSM	YBTG	MGSA	MG SV	MGSD	MG SY	YBSO	YBTM
	Jun-Aug 2017	25,791	20,455	17,002	79.6	780	4.4	3,404	16.6
	Jun-Aug 2018	25,956	20,517	17,176	80.1	733	4.1	3,356	16.4
	Sep-Nov 2018	25,994	20,530	17,274	80.3	739	4.1	3,314	16.1
	Dec-Feb 2019	26,031	20,542	17,311	80.5	731	4.1	3,290	16.0
	Mar-May 2019	26,068	20,554	17,280	80.2	712	4.0	3,368	16.4
	Jun-Aug 2019	26,107	20,567	17,256	80.2	727	4.0	3,366	16.4
	Change on quarter	38	13	-24	0.0	15	0.1	-3	0.0
	Change %	0.1	0.1	-0.1		2.1		-0.1	
	Change on year	151	49	80	0.0	-6	-0.1	10	0.0
	Change %	0.6	0.2	0.5		-0.8		0.3	
Women									
		MG SN	LF2P	MG SB	LF25	MG SE	MG SZ	LF2N	LF2T
	Jun-Aug 2017	26,971	20,710	15,102	70.7	672	4.3	5,402	26.1
	Jun-Aug 2018	27,091	20,740	15,235	71.0	629	4.0	5,384	26.0
	Sep-Nov 2018	27,122	20,748	15,268	71.3	631	4.0	5,336	25.7
	Dec-Feb 2019	27,153	20,756	15,409	71.8	611	3.8	5,246	25.3
	Mar-May 2019	27,184	20,763	15,469	72.0	580	3.6	5,251	25.3
	Jun-Aug 2019	27,215	20,772	15,437	71.6	586	3.7	5,310	25.6
	Change on quarter	31	9	-32	-0.3	6	0.0	59	0.3
	Change %	0.1	0.0	-0.2		1.1		1.1	
	Change on year	123	32	202	0.6	-43	-0.3	-74	-0.4
	Change %	0.5	0.2	1.3		-6.8		-1.4	

Source: Labour Force Survey

Labour market statistics enquiries: labour.market@ons.gov.uk

1. The Labour Force Survey (LFS) is a survey of households in the UK.

2. The headline employment rate is the number of people aged 16 to 64 in employment divided by the population aged 16 to 64.

3. The headline unemployment rate is the number of unemployed people (aged 16+) divided by the economically active population (aged 16+). The economically active population is defined as those in employment plus those who are unemployed.

4. The headline inactivity rate is the number of people aged 16 to 64 divided by the population aged 16-64.

Note on headline employment, unemployment and inactivity rates

The headline employment and inactivity rates are based on the population aged 16 to 64 but the headline unemployment rate is based on the economically active population aged 16 and over. The employment and inactivity rates for those aged 16 and over are affected by the inclusion of the retired population in the denominators and are therefore less meaningful than the rates for those aged from 16 to 64. However, for the unemployment rate for those aged 16 and over, no such effect occurs as the denominator for the unemployment rate is the economically active population which only includes people in work or actively seeking and able to work.

Note on headline employment, unemployment and inactivity levels

The headline employment and unemployment levels are for those aged 16 and over; they measure all people in work or actively seeking and able to work. However, the headline inactivity level is for those aged 16 to 64. The inactivity rate for those aged 16 and over is less meaningful as it includes elderly people who have retired from the labour force.

SUMMARY

2(1) Labour market status by age group

United Kingdom (thousands) seasonally adjusted

		Aged 16 and over						Aged 16-64					
		Employment		Unemployment		Inactivity		Employment		Unemployment		Inactivity	
		Level	Rate	Level	Rate	Level	Rate	Level	Rate	Level	Rate	Level	Rate
		MGRZ	MGSR	MGSC	MGSX	MGSI	YBTC	LF2G	LF24	LF2I	LF2Q	LF2M	LF2S
People	Jun-Aug 2017	32,104	60.8	1,452	4.3	19,206	36.4	30,931	75.1	1,428	4.4	8,806	21.4
	Jun-Aug 2018	32,410	61.1	1,363	4.0	19,274	36.3	31,173	75.6	1,345	4.1	8,740	21.2
	Sep-Nov 2018	32,542	61.3	1,370	4.0	19,203	36.2	31,272	75.8	1,355	4.2	8,650	21.0
	Dec-Feb 2019	32,721	61.5	1,343	3.9	19,120	36.0	31,438	76.1	1,323	4.0	8,536	20.7
	Mar-May 2019	32,749	61.5	1,292	3.8	19,211	36.1	31,421	76.0	1,276	3.9	8,619	20.9
	Jun-Aug 2019	32,693	61.3	1,314	3.9	19,315	36.2	31,365	75.9	1,297	4.0	8,676	21.0
	Change on quarter	-56	-0.2	22	0.1	104	0.1	-56	-0.2	21	0.1	57	0.1
	Change %	-0.2		1.7		0.5		-0.2		1.6		0.7	
	Change on year	282	0.2	-49	-0.2	41	-0.1	192	0.3	-48	-0.2	-63	-0.2
	Change %	0.9		-3.6		0.2		0.6		-3.6		-0.7	
Men		MGSA	MGSS	MGSD	MGSY	MGSJ	YBTD	YBSF	MGSV	YBSI	YBTJ	YBSO	YBTM
	Jun-Aug 2017	17,002	65.9	780	4.4	8,009	31.1	16,287	79.6	764	4.5	3,404	16.6
	Jun-Aug 2018	17,176	66.2	733	4.1	8,047	31.0	16,441	80.1	721	4.2	3,356	16.4
	Sep-Nov 2018	17,274	66.5	739	4.1	7,980	30.7	16,486	80.3	730	4.2	3,314	16.1
	Dec-Feb 2019	17,311	66.5	731	4.1	7,988	30.7	16,532	80.5	719	4.2	3,290	16.0
	Mar-May 2019	17,280	66.3	712	4.0	8,076	31.0	16,482	80.2	704	4.1	3,368	16.4
	Jun-Aug 2019	17,256	66.1	727	4.0	8,123	31.1	16,485	80.2	716	4.2	3,366	16.4
	Change on quarter	-24	-0.2	15	0.1	47	0.1	3	0.0	13	0.1	-3	0.0
	Change %	-0.1		2.1		0.6		0.0		1.8		-0.1	
	Change on year	80	-0.1	-6	-0.1	76	0.1	44	0.0	-5	0.0	10	0.0
	Change %	0.5		-0.8		0.9		0.3		-0.7		0.3	
Women		MGST	MGST	MGSE	MGSZ	MGSK	YBTE	LF2H	LF25	LF2J	LF2R	LF2N	LF2T
	Jun-Aug 2017	15,102	56.0	672	4.3	11,198	41.5	14,644	70.7	664	4.3	5,402	26.1
	Jun-Aug 2018	15,235	56.2	629	4.0	11,228	41.4	14,732	71.0	624	4.1	5,384	26.0
	Sep-Nov 2018	15,268	56.3	631	4.0	11,223	41.4	14,786	71.3	626	4.1	5,336	25.7
	Dec-Feb 2019	15,409	56.8	611	3.8	11,132	41.0	14,906	71.8	603	3.9	5,246	25.3
	Mar-May 2019	15,469	56.9	580	3.6	11,135	41.0	14,940	72.0	573	3.7	5,251	25.3
	Jun-Aug 2019	15,437	56.7	586	3.7	11,192	41.1	14,881	71.6	581	3.8	5,310	25.6
	Change on quarter	-32	-0.2	6	0.0	57	0.2	-59	-0.3	8	0.1	59	0.3
	Change %	-0.2		1.1		0.5		-0.4		1.5		1.1	
	Change on year	202	0.5	-43	-0.3	-35	-0.3	148	0.6	-43	-0.3	-74	-0.4
	Change %	1.3		-6.8		-0.3		1.0		-6.9		-1.4	
		Aged 16-17						Aged 18-24					
		Employment		Unemployment		Inactivity		Employment		Unemployment		Inactivity	
		Level	Rate	Level	Rate	Level	Rate	Level	Rate	Level	Rate	Level	Rate
		YBTO	YBUA	YBVH	YBVK	YCAS	LWEX	YBTR	YBUD	YBVN	YBVQ	YCAV	LWFA
People	Jun-Aug 2017	344	24.2	106	23.5	974	68.4	3,504	62.0	427	10.9	1,723	30.5
	Jun-Aug 2018	337	24.2	94	21.9	961	69.0	3,490	62.4	373	9.6	1,730	30.9
	Sep-Nov 2018	313	22.5	103	24.8	977	70.1	3,541	63.6	408	10.3	1,622	29.1
	Dec-Feb 2019	332	23.8	88	21.0	972	69.8	3,528	63.6	404	10.3	1,618	29.1
	Mar-May 2019	341	24.5	83	19.6	967	69.5	3,432	62.1	410	10.7	1,687	30.5
	Jun-Aug 2019	338	24.2	86	20.3	971	69.7	3,366	61.1	408	10.8	1,734	31.5
	Change on quarter	-4	-0.3	3	0.7	4	0.2	-66	-1.0	-1	0.2	47	1.0
	Change %	-1.2		3.2		0.4		-1.9		-0.4		2.8	
	Change on year	0	0.0	-9	-1.6	10	0.7	-124	-1.3	36	1.2	4	0.5
	Change %	0.0		-9.3		1.0		-3.5		9.6		0.2	
Men		YBTP	YBUB	YBVI	YBVL	YCAT	LWEY	YBTS	YBUE	YBVO	YBVR	YCAW	LWFB
	Jun-Aug 2017	164	22.6	57	25.8	508	69.6	1,798	62.3	247	12.1	839	29.1
	Jun-Aug 2018	168	23.6	49	22.4	496	69.6	1,825	63.9	211	10.4	821	28.7
	Sep-Nov 2018	148	20.8	53	26.4	512	71.8	1,853	65.1	236	11.3	756	26.6
	Dec-Feb 2019	161	22.6	50	23.8	502	70.3	1,813	64.0	248	12.0	773	27.3
	Mar-May 2019	156	21.8	47	23.0	511	71.6	1,750	62.0	249	12.5	824	29.2
	Jun-Aug 2019	156	21.9	50	24.2	508	71.1	1,736	61.7	246	12.4	831	29.5
	Change on quarter	1	0.0	3	1.2	-3	-0.5	-14	-0.3	-3	-0.1	7	0.4
	Change %	0.4		7.4		-0.5		-0.8		-1.4		0.9	
	Change on year	-12	-1.7	2	1.9	12	1.5	-89	-2.2	35	2.1	10	0.8
	Change %	-7.1		3.1		2.4		-4.9		16.7		1.2	
Women		YBTQ	YBUC	YBVJ	YBVM	YCAU	LWEZ	YBTT	YBUF	YBVP	YBVS	YCAX	LWFC
	Jun-Aug 2017	180	25.9	49	21.3	466	67.1	1,706	61.6	181	9.6	883	31.9
	Jun-Aug 2018	169	24.9	46	21.4	465	68.4	1,665	60.9	162	8.8	909	33.2
	Sep-Nov 2018	165	24.3	50	23.4	465	68.3	1,688	61.9	172	9.2	866	31.8
	Dec-Feb 2019	171	25.1	38	18.1	471	69.3	1,715	63.2	156	8.3	844	31.1
	Mar-May 2019	186	27.4	36	16.4	457	67.3	1,682	62.2	160	8.7	863	31.9
	Jun-Aug 2019	181	26.6	36	16.5	463	68.1	1,630	60.5	162	9.1	903	33.5
	Change on quarter	-5	-0.7	-1	0.1	7	0.9	-52	-1.7	2	0.3	40	1.6
	Change %	-2.5		-2.1		1.5		-3.1		1.2		4.6	
	Change on year	12	1.8	-10	-4.9	-2	-0.3	-35	-0.4	1	0.2	-6	0.3
	Change %	7.1		-22.4		-0.4		-2.1		0.4		-0.7	

SUMMARY

2(2) Labour market status by age group

United Kingdom (thousands) seasonally adjusted

People	Aged 25-34						Aged 35-49					
	Employment		Unemployment		Inactivity		Employment		Unemployment		Inactivity	
	Level	Rate	Level	Rate	Level	Rate	Level	Rate	Level	Rate	Level	Rate
	YBTU	YBUG	YCGM	YCGP	YCAI	LWFD	YBTX	YBUJ	YCGS	YCGV	YCBB	LWFG
Jun-Aug 2017	7,416	83.5	296	3.8	1,168	13.2	10,859	84.7	320	2.9	1,645	12.8
Jun-Aug 2018	7,435	83.3	296	3.8	1,198	13.4	10,861	85.0	298	2.7	1,613	12.6
Sep-Nov 2018	7,478	83.7	269	3.5	1,192	13.3	10,871	85.2	306	2.7	1,583	12.4
Dec-Feb 2019	7,543	84.3	269	3.4	1,136	12.7	10,876	85.3	292	2.6	1,579	12.4
Mar-May 2019	7,570	84.5	248	3.2	1,139	12.7	10,882	85.5	276	2.5	1,577	12.4
Jun-Aug 2019	7,550	84.2	272	3.5	1,140	12.7	10,866	85.4	276	2.5	1,584	12.4
Change on quarter	-21	-0.3	24	0.3	1	0.0	-16	-0.1	0	0.0	6	0.1
Change %	-0.3		9.8		0.1		-0.1		0.1		0.4	
Change on year	114	1.0	-24	-0.3	-58	-0.7	5	0.4	-22	-0.2	-30	-0.2
Change %	1.5		-8.0		-4.9		0.0		-7.5		-1.8	
Men	YBTV	YBUH	YCGN	YCGQ	YCAZ	LWFE	YBTY	YBUK	YCGT	YCGW	YCBC	LWFH
Jun-Aug 2017	3,983	89.9	152	3.7	298	6.7	5,742	90.7	144	2.4	443	7.0
Jun-Aug 2018	3,996	89.3	155	3.7	324	7.2	5,721	90.7	157	2.7	426	6.8
Sep-Nov 2018	4,028	89.9	148	3.5	307	6.8	5,727	90.9	146	2.5	426	6.8
Dec-Feb 2019	4,050	90.2	141	3.4	299	6.7	5,738	91.2	131	2.2	425	6.7
Mar-May 2019	4,061	90.3	139	3.3	298	6.6	5,743	91.3	127	2.2	417	6.6
Jun-Aug 2019	4,050	90.0	144	3.4	308	6.8	5,750	91.5	128	2.2	407	6.5
Change on quarter	-10	-0.3	6	0.1	10	0.2	7	0.2	1	0.0	-11	-0.2
Change %	-0.3		4.0		3.4		0.1		0.4		-2.6	
Change on year	54	0.7	-11	-0.3	-16	-0.4	29	0.8	-30	-0.5	-20	-0.3
Change %	1.4		-6.9		-4.9		0.5		-18.9		-4.7	
Women	YBTW	YBUI	YCGO	YCGR	YCBA	LWFF	YBTZ	YBUL	YCGU	YCGX	YCBD	LWFI
Jun-Aug 2017	3,433	77.2	144	4.0	871	19.6	5,117	78.8	176	3.3	1,202	18.5
Jun-Aug 2018	3,439	77.2	141	3.9	875	19.6	5,140	79.5	141	2.7	1,187	18.3
Sep-Nov 2018	3,451	77.4	121	3.4	885	19.9	5,144	79.6	160	3.0	1,158	17.9
Dec-Feb 2019	3,493	78.3	128	3.5	837	18.8	5,138	79.6	161	3.0	1,155	17.9
Mar-May 2019	3,510	78.7	109	3.0	841	18.9	5,139	79.7	149	2.8	1,160	18.0
Jun-Aug 2019	3,499	78.5	128	3.5	832	18.7	5,116	79.4	148	2.8	1,177	18.3
Change on quarter	-10	-0.2	19	0.5	-9	-0.2	-22	-0.3	0	0.0	17	0.3
Change %	-0.3		17.2		-1.0		-0.4		-0.1		1.5	
Change on year	60	1.3	-13	-0.4	-42	-1.0	-24	0.0	7	0.1	-10	-0.1
Change %	1.7		-9.3		-4.9		-0.5		5.1		-0.8	
People	Age 50-64						Age 65+					
	Employment		Unemployment		Inactivity		Employment		Unemployment		Inactivity	
	Level	Rate	Level	Rate	Level	Rate	Level	Rate	Level	Rate	Level	Rate
	LF26	LF2U	LF28	LF2E	LF2A	LF2W	LFK4	LFK6	K5HU	K5HW	LFL4	LFL6
Jun-Aug 2017	8,807	71.1	279	3.1	3,297	26.6	1,173	10.1	24	2.0	10,400	89.7
Jun-Aug 2018	9,049	72.0	283	3.0	3,236	25.7	1,237	10.5	18	1.4	10,535	89.4
Sep-Nov 2018	9,069	71.9	269	2.9	3,276	26.0	1,270	10.7	15	1.1	10,553	89.1
Dec-Feb 2019	9,159	72.4	269	2.9	3,231	25.5	1,282	10.8	20	1.5	10,584	89.0
Mar-May 2019	9,196	72.4	260	2.7	3,249	25.6	1,328	11.1	16	1.2	10,592	88.7
Jun-Aug 2019	9,246	72.5	255	2.7	3,247	25.5	1,327	11.1	16	1.2	10,639	88.8
Change on quarter	50	0.1	-5	-0.1	-2	-0.1	0	0.0	1	0.0	47	0.0
Change %	0.5		-1.9		-0.1		0.0		3.8		0.4	
Change on year	197	0.5	-29	-0.4	10	-0.3	90	0.6	-1	-0.2	104	-0.6
Change %	2.2		-10.1		0.3		7.3		-6.6		1.0	
Men	MGUX	YBUN	MGVM	MGXF	MGWB	LWFK	MGVA	YBUQ	MGVP	MGXI	MGWE	LWFN
Jun-Aug 2017	4,600	75.7	164	3.4	1,317	21.7	715	13.4	16	2.3	4,604	86.3
Jun-Aug 2018	4,731	76.7	149	3.1	1,288	20.9	735	13.5	12	1.6	4,691	86.3
Sep-Nov 2018	4,731	76.4	146	3.0	1,313	21.2	788	14.4	9	1.2	4,666	85.4
Dec-Feb 2019	4,770	76.8	149	3.0	1,292	20.8	779	14.2	12	1.5	4,698	85.6
Mar-May 2019	4,772	76.6	142	2.9	1,319	21.2	799	14.5	9	1.1	4,707	85.4
Jun-Aug 2019	4,792	76.6	148	3.0	1,312	21.0	771	13.9	11	1.4	4,757	85.9
Change on quarter	20	0.1	7	0.1	-6	-0.2	-27	-0.6	3	0.4	50	0.5
Change %	0.4		4.6		-0.5		-3.4		30.1		1.1	
Change on year	61	-0.1	-1	-0.1	24	0.1	36	0.4	-1	-0.2	66	-0.4
Change %	1.3		-0.7		1.9		4.9		-10.3		1.4	
Women	LF27	LF2V	LF29	LF2F	LF2B	LF2X	LFK5	LFK7	K5HV	K5HX	LFL5	LFL7
Jun-Aug 2017	4,207	66.7	115	2.7	1,981	31.4	458	7.3	8	1.7	5,796	92.6
Jun-Aug 2018	4,319	67.5	134	3.0	1,948	30.4	502	7.9	5	1.0	5,844	92.0
Sep-Nov 2018	4,339	67.5	123	2.8	1,963	30.6	482	7.6	5	1.1	5,887	92.3
Dec-Feb 2019	4,390	68.1	120	2.7	1,939	30.1	503	7.9	8	1.6	5,886	92.0
Mar-May 2019	4,424	68.4	118	2.6	1,930	29.8	529	8.2	7	1.4	5,884	91.6
Jun-Aug 2019	4,454	68.6	106	2.3	1,935	29.8	556	8.6	5	1.0	5,882	91.3
Change on quarter	30	0.2	-11	-0.3	4	0.0	27	0.4	-2	-0.4	-3	-0.4
Change %	0.7		-9.7		0.2		5.1		-26.7		0.0	
Change on year	135	1.1	-27	-0.7	-14	-0.7	54	0.7	0	-0.1	38	-0.7
Change %	3.1		-20.5		-0.7		10.7		1.9		0.7	

Source: Labour Force Survey

Labour market statistics enquiries: labour.market@ons.gov.uk

EMPLOYMENT AND JOBS

3 Full-time, part-time and temporary workers

United Kingdom (thousands of people aged 16 and over) seasonally adjusted

		All in employment					Full-time and part-time workers ¹							Total Workers with second jobs
		Total	Employees	Self employed	Unpaid family workers	Government supported training & employment programmes ²	Total people working full-time	total people working part-time	Employees working full time	Employees working part time	Self- employed people working full-time	Self- employed people working part-time		
1	2	3	4	5	6	7	8	9	10	11	12			
People	MGRZ	MGRN	MGRQ	MGRT	MGRW	YCBE	YCBH	YCBK	YCBN	YCBQ	YCBT	YCBW		
	Jun-Aug 2017	32,104	27,066	4,853	109	75	23,543	8,561	20,064	7,002	3,405	1,448	1,110	
	Jun-Aug 2018	32,410	27,479	4,768	118	45	23,898	8,513	20,531	6,949	3,326	1,442	1,123	
	Sep-Nov 2018	32,542	27,532	4,856	106	49	24,008	8,534	20,579	6,953	3,390	1,465	1,117	
	Dec-Feb 2019	32,721	27,711	4,833	134	43	24,146	8,575	20,684	7,027	3,414	1,418	1,129	
	Mar-May 2019	32,749	27,626	4,955	127	40	24,088	8,661	20,606	7,020	3,433	1,522	1,153	
	Jun-Aug 2019	32,693	27,577	4,930	129	57	24,160	8,533	20,611	6,965	3,497	1,433	1,147	
	Change on quarter	-56	-49	-25	2	17	73	-129	5	-54	64	-89	-6	
	Change %	-0.2	-0.2	-0.5	1.2	41.4	0.3	-1.5	0.0	-0.8	1.9	-5.9	-0.5	
	Change on year	282	97	162	10	12	263	20	81	17	171	-9	24	
	Change %	0.9	0.4	3.4	8.8	27.4	1.1	0.2	0.4	0.2	5.1	-0.6	2.1	
Men	MGSA	MGRO	MGRR	MGRU	MGRX	YCBF	YCBI	YCBL	YCBO	YCBR	YCBU	YCBX		
	Jun-Aug 2017	17,002	13,681	3,236	48	37	14,757	2,245	12,073	1,608	2,645	591	478	
	Jun-Aug 2018	17,176	13,916	3,176	57	27	14,904	2,272	12,286	1,629	2,596	580	468	
	Sep-Nov 2018	17,274	13,963	3,230	49	32	14,990	2,284	12,327	1,636	2,641	590	475	
	Dec-Feb 2019	17,311	13,969	3,258	61	24	15,052	2,259	12,353	1,616	2,673	584	472	
	Mar-May 2019	17,280	13,897	3,294	66	23	14,961	2,319	12,279	1,618	2,656	638	482	
	Jun-Aug 2019	17,256	13,867	3,297	58	34	15,023	2,233	12,281	1,585	2,711	585	485	
	Change on quarter	-24	-30	3	-8	11	61	-86	3	-33	55	-53	3	
	Change %	-0.1	-0.2	0.1	-12.2	48.1	0.4	-3.7	0.0	-2.0	2.1	-8.3	0.6	
	Change on year	80	-49	121	1	8	119	-38	-5	-44	115	6	16	
	Change %	0.5	-0.4	3.8	2.0	28.6	0.8	-1.7	0.0	-2.7	4.4	1.0	3.5	
Women	MGSB	MGRP	MGRS	MGRV	MGRY	YCBG	YCBJ	YCBM	YCBP	YCBS	YCBV	YCBY		
	Jun-Aug 2017	15,102	13,385	1,617	61	38	8,786	6,316	7,992	5,393	760	857	632	
	Jun-Aug 2018	15,235	13,564	1,592	61	18	8,993	6,241	8,244	5,319	730	862	655	
	Sep-Nov 2018	15,268	13,569	1,625	57	16	9,018	6,250	8,252	5,317	750	876	641	
	Dec-Feb 2019	15,409	13,742	1,575	73	20	9,093	6,316	8,331	5,411	741	834	657	
	Mar-May 2019	15,469	13,729	1,661	61	17	9,126	6,342	8,328	5,402	777	884	671	
	Jun-Aug 2019	15,437	13,710	1,633	70	23	9,138	6,299	8,330	5,380	786	848	662	
	Change on quarter	-32	-20	-28	10	6	11	-43	2	-22	9	-36	-9	
	Change %	-0.2	-0.1	-1.7	15.8	32.4	0.1	-0.7	0.0	-0.4	1.1	-4.1	-1.3	
	Change on year	202	146	42	9	5	144	58	86	61	56	-14	8	
	Change %	1.3	1.1	2.6	15.2	25.5	1.6	0.9	1.0	1.1	7.7	-1.7	1.2	
Temporary employees (reasons for temporary working)														
Part-time workers (reasons for working part-time) ³														
People	Total	Total as % of all employees	Could not find permanent job	% that could not find permanent job	Did not want permanent job	Had a contract with period of training	Some other reason	Total ⁴	Could not find full- time job	% that could not find full- time job	Did not want full- time job	Ill or disabled	Student or at school	
	13	14	15	16	17	18	19	20	21	22	23	24	25	
	YCBZ	YCCC	YCCF	YCCI	YCCL	YCCO	YCCR	YCCU	YCCX	YCDA	YCDD	YCDG	YCDJ	YCDJ
	Jun-Aug 2017	1,594	5.9	443	27.8	431	127	594	8,450	1,037	12.3	5,968	272	1,096
	Jun-Aug 2018	1,522	5.5	407	26.7	443	124	548	8,390	937	11.2	6,004	272	1,113
	Sep-Nov 2018	1,532	5.6	408	26.7	448	119	557	8,418	883	10.5	6,090	270	1,109
	Dec-Feb 2019	1,545	5.6	408	26.4	453	136	548	8,446	950	11.2	6,094	262	1,069
	Mar-May 2019	1,467	5.3	366	24.9	462	130	510	8,542	931	10.9	6,188	280	1,077
	Jun-Aug 2019	1,398	5.1	335	24.0	366	135	562	8,399	869	10.3	6,108	276	1,085
	Change on quarter	-69	-0.2	-31	-1.0	-96	5	53	-143	-62	-0.5	-81	-4	8
	Change %	-4.7		-8.4		-20.7	3.9	10.3	-1.7	-6.6		-1.3	-1.3	0.8
	Change on year	-124	-0.5	-72	-2.8	-77	11	14	8	-68	-0.8	103	5	-27
	Change %	-8.2		-17.7		-17.4	8.7	2.6	0.1	-7.3		1.7	1.8	-2.5
Men	YCCA	YCCD	YCCG	YCCJ	YCCM	YCCP	YCCS	YCCV	YCCY	YCDB	YCDE	YCDH	YCDK	
	Jun-Aug 2017	747	5.5	223	29.8	203	59	263	2,200	446	20.3	1,151	104	472
	Jun-Aug 2018	733	5.3	217	29.6	205	59	252	2,209	427	19.3	1,180	92	484
	Sep-Nov 2018	732	5.2	213	29.1	202	61	256	2,225	397	17.8	1,229	93	485
	Dec-Feb 2019	707	5.1	216	30.5	181	71	239	2,200	414	18.8	1,229	95	433
	Mar-May 2019	664	4.8	187	28.2	193	60	224	2,256	404	17.9	1,296	94	436
	Jun-Aug 2019	638	4.6	167	26.2	149	64	258	2,171	375	17.3	1,262	91	423
	Change on quarter	-26	-0.2	-20	-2.0	-44	4	34	-85	-30	-0.7	-34	-3	-14
	Change %	-3.9		-10.7		-22.6	6.9	14.9	-3.8	-7.3		-2.6	-3.6	-3.1
	Change on year	-95	-0.7	-50	-3.4	-56	5	6	-38	-52	-2.1	81	-1	-61
	Change %	-12.9		-23.0		-27.2	8.4	2.4	-1.7	-12.2		6.9	-1.4	-12.6
Women	YCCB	YCEE	YCHH	YCCK	YCCN	YCCQ	YCCT	YCCW	YCCZ	YCDC	YCDE	YCDI	YCDL	
	Jun-Aug 2017	848	6.3	220	25.9	228	69	331	6,250	591	9.5	4,817	168	624
	Jun-Aug 2018	789	5.8	190	24.0	238	65	296	6,181	510	8.3	4,824	180	629
	Sep-Nov 2018	800	5.9	196	24.4	246	58	301	6,193	486	7.8	4,861	176	624
	Dec-Feb 2019	839	6.1	193	23.0	272	65	309	6,246	536	8.6	4,866	168	637
	Mar-May 2019	802	5.8	178	22.2	269	70	285	6,286	526	8.4	4,893	186	641
	Jun-Aug 2019	760	5.5	168	22.1	217	71	304	6,228	494	7.9	4,846	186	663
	Change on quarter	-43	-0.3	-10	-0.1	-52	1	19	-58	-32	-0.4	-47	0	22
	Change %	-5.3		-5.9		-19.4	1.4	6.7	-0.9	-6.1		-1.0	-0.1	3.4
	Change on year	-30	-0.3	-22	-2.0	-21	6	8	47	-16	-0.3	22	6	34
	Change %	-3.7		-11.6		-9.0	9.0	2.7	0.8	-3.2		0.5	3.4	5.3

Relationship between columns: 1= 2+3+4+5; 1+6+7; 2=8+9; 3=10+11; 13=15+17+18+19; 20=9+11; 14=13/2; 16=15/13; 22=21/20

Source: Labour Force Survey

1. The split between full-time and part-time employment is based on respondents' self-classification.

Labour market statistics enquiries: labour.market@ons.gov.uk

2. This series does not include all people on these programmes; it only includes those engaging in any form of work, work experience or work-related training.

3. These series cover Employees and Self-employed only. These series include some temporary employees recorded in columns 13 to 19.

4. The total includes those who did not give a reason for working part-time and it therefore does not equal the sum of columns 21, 23, 24 and 25.

EMPLOYMENT AND JOBS

4 Public and private sector employment

(first published on 10 September 2019)

United Kingdom (thousands of people aged 16 and over), seasonally adjusted									
Public sector		Private sector ¹		Total employment ²	Public sector excluding effects of major reclassifications (See Explanatory note at bottom of table)		Private sector excluding effects of major reclassifications (See Explanatory note at bottom of table)		
(000s)	(%)	(000s)	(%)	(000s)	(000s)	(%)	(000s)	(%)	
1	2	3	4	5	6	7	8	9	
G7AU	G9BZ	G7K5	G9C2	G7GO	MFY7	MFY9	MFZ2	MFY5	
Mar 17	5,473	17.1	26,483	82.9	31,956	5,211	16.3	26,745	83.7
Jun 17	5,485	17.1	26,648	82.9	32,133	5,223	16.3	26,910	83.7
Sep 17	5,475	17.1	26,619	82.9	32,094	5,218	16.3	26,876	83.7
Dec 17	5,341	16.6	26,900	83.4	32,241	5,224	16.2	27,017	83.8
Mar 18	5,351	16.5	27,038	83.5	32,389	5,233	16.2	27,156	83.8
Jun 18	5,355 r	16.5	27,053 r	83.5	32,408	5,247 r	16.2	27,161 r	83.8
Sep 18	5,360	16.5	27,132	83.5	32,492	5,272	16.2	27,220	83.8
Dec 18	5,375	16.4	27,339	83.6	32,714	5,286	16.2	27,428	83.8
Mar 19	5,388 r	16.5	27,358 r	83.5	32,746	5,301 r	16.2	27,445 r	83.8
Jun 19	5,417	16.5	27,360	83.5	32,777	5,324	16.2	27,453	83.8
Change on quarter	29	0.0	2	0.0	31	23	0.0	8	0.0
Change %	0.5	-	0.0	-	0.1	0.4	-	0.0	-
Change on year	62	0.0	307	0.0	369	77	0.0	292	0.0
Change %	1.2	-	1.1	-	1.1	1.5	-	1.1	-

Enquiries 01633 455400

Source: Labour Force Survey (LFS) and returns from public sector organisations

Relationship between columns: 2 = 1/5*100; 3 = 5-1; 4 = 3/5*100, 5=6+8

See footnotes under table 4(1)

4(1) Public sector employment by industry

(first published on 10 September 2019)

United Kingdom (thousands of people aged 16 and over), seasonally adjusted										
Construction	HM Forces ³	Police (including civilians)	Public administration	Of which: Civil Service ⁴	Education	National Health Service	Other health and social work	Other (including financial corporations)	Total public sector employment ⁵	
1	2	3	4	5	6	7	8	9	10	
G7ER	G7EU	G7EX	G7F2	G7D6	G7F5	G7FG	G7FJ	G7FM	G7AU	
Mar 17	40	157	245	1,005	419	1,509	1,613	278	628	5,473
Jun 17	39	156	245	1,012	423	1,507	1,624	274	625	5,485
Sep 17	38	155	245	1,016	423	1,499	1,629	273	623	5,475
Dec 17	37	155	246	1,018	427	1,496	1,637	230	523	5,341
Mar 18	35	155	246	1,024	430	1,498	1,643	229	524	5,351
Jun 18	35	153	247 r	1,029 r	431	1,502 r	1,648 r	223	514 r	5,355
Sep 18	34	153	247	1,034	436	1,507	1,664	216	507	5,360
Dec 18	35	151	247	1,040	440	1,509	1,671	215	504	5,375
Mar 19	36	153	249	1,050 r	446	1,507 r	1,684 r	214 r	497	5,388
Jun 19	36	152	249	1,054	447	1,514	1,693	216	498	5,417
Change on quarter	0	-1	0	4	1	7	9	2	1	29
Change %	0.0	-0.7	0.0	0.4	0.2	0.5	0.5	0.9	0.2	0.5
Change on year	1	-1	2	25	16	12	45	-7	-16	62
Change %	2.9	-0.7	0.8	2.4	3.7	0.8	2.7	-3.1	-3.1	1.2

Enquiries 01633 455400

Source: returns from public sector organisations

Explanatory Note: The public and private sector employment series have been affected by a number of major reclassifications where bodies employing large numbers of people have moved between the public and private sectors. These major reclassifications are as follows:

Further Education corporations and Sixth Form College corporations in England are included in the private sector from June 2012 but in the public sector for earlier time periods.
Royal Mail plc is included in the private sector from December 2013 but in the public sector for earlier time periods.

Lloyds Banking Group plc is included in the public sector from December 2008 to December 2013 but in the private sector for earlier and later time periods.

Royal Bank of Scotland plc is included in the public sector from December 2008 but in the private sector for earlier time periods.

Network Rail is included in the private sector before December 2002. From December 2002 onwards it is included in the public sector (except for the period from June 2003 to March 2004, when it is included in the private sector).

Northern Rock is included in the public sector from December 2007 until December 2011 but in the private sector for earlier and later time periods.

Bradford and Bingley is included in the public sector from September 2008 but in the private sector for earlier time periods.

Welsh Further Education colleges are included in the private sector from March 2015 but in the public sector for earlier time periods.

Housing associations in England are included in the public sector between September 2008 and September 2017; they are in the private sector for earlier and later time periods.

Housing associations in Scotland are included in the public sector from September 2001 until June 2018; they are included in the private sector for earlier and later time periods.

Housing associations in Wales are included in the private sector from June 2018; they are included in the public sector for earlier time periods.

Housing associations in Northern Ireland are included in the public sector back to the start of the time series in March 1999.

The series shown at Table 4 (in columns 6 to 9) for public and private sector employment excluding the effects of major reclassifications show all of the above mentioned bodies included in the private sector for all time periods and excluded from the public sector for all time periods. When using figures from this table, the latest estimate of the number of people employed in the public and private sectors should be taken from columns 1 and 3 respectively. However the quarterly and annual changes in employment shown in these columns are affected by reclassifications. Figures from columns 6 and 8 should be used for assessments of the recent underlying changes in public and private sector employment. The changes in employment shown in these columns are measured on a consistent basis to remove the effect of major reclassifications.

1. Estimated as the difference between LFS total employment and the data from public sector organisations.

2. LFS employment data for March refer to February-April, June refers to May-July, September refers to August-October and December refers to November-January.

3. This series excludes locally engaged staff stationed outside the United Kingdom.

EMPLOYMENT AND JOBS

5 Workforce jobs

(first published on 10 September 2019)

United Kingdom (thousands), seasonally adjusted

	Workforce jobs	Employee jobs	Self-employment jobs ¹	HM Forces	Government-supported trainees ¹
	1	2	3	4	5
	DYDC	BCAJ	DYZN	LOJX	LOJU
Jun 17	34,864	30,115	4,549	156	45
Sep 17	34,948	30,219	4,527	155	46
Dec 17	34,856	30,188	4,483	155	31
Mar 18	34,949	30,271	4,496	154	28
Jun 18	35,028	30,311	4,536	153	28
Sep 18	35,104	30,451	4,477	153	23
Dec 18	35,283	30,521	4,589	152	21
Mar 19 (r)	35,554	30,716	4,657	153	28
Jun 19 (p)	35,667	30,800	4,673	152	42
Change on quarter	114	84	16	-1	14
Change %	0.3	0.3	0.3	-0.4	50.6
Change on year	640	490	137	-1	13
Change %	1.8	1.6	3.0	-0.6	47.1

Relationship between columns: 1=2+3+4+5

See footnotes under table 6

6 Workforce jobs by industry (first published on 10 September 2019)

Standard Industrial Classification (2007)

United Kingdom (thousands), seasonally adjusted

SIC 2007 sections	All jobs A-T	Agriculture, forestry & fishing A	Mining & quarrying B	Manufacturing C	Electricity, gas, steam & air conditioning supply D	Water supply, sewerage, waste & remediation activities E	Construction F	Wholesale & retail trade; repair of motor vehicles and motor cycles G	Transport & storage H	Accommodation & food service activities I	Information & communication J
	DYDC	JWR5	JWR6	JWR7	JWR8	JWR9	JWS2	JWS3	JWS4	JWS5	JWS6
Jun 17	34,864	409	60	2,684	147	218	2,321	5,031	1,727	2,397	1,509
Sep 17	34,948	421	58	2,697	144	221	2,350	4,985	1,694	2,386	1,488
Dec 17	34,856	420	60	2,708	143	228	2,340	4,996	1,680	2,342	1,484
Mar 18	34,949	401	62	2,705	146	225	2,339	4,998	1,678	2,382	1,530
Jun 18	35,028	392	62	2,731	147	226	2,356	4,983	1,705	2,415	1,559
Sep 18	35,104	387	60	2,719	150	226	2,367	4,967	1,708	2,394	1,570
Dec 18	35,283	346	57	2,707	145	232	2,393	4,986	1,762	2,416	1,587
Mar 19 (r)	35,554	359	59	2,734	143	240	2,393	5,005	1,750	2,432	1,614
Jun 19 (p)	35,667	366	57	2,729	141	239	2,369	4,997	1,789	2,470	1,620
Change on quarter	114	7	-2	-5	-2	-1	-25	-8	39	38	7
Change %	0.3	1.8	-3.9	-0.2	-1.4	-0.2	-1.0	-0.2	2.2	1.5	0.4
Change on year	640	-26	-5	-1	-6	14	13	14	84	54	62
Change %	1.8	-6.6	-8.6	0.0	-4.1	6.0	0.6	0.3	4.9	2.2	4.0

SIC 2007 sections	Financial & insurance activities K	Real estate activities L	Professional scientific & technical activities M	Administrative & support service activities N	Public admin & defence; compulsory social security ² O	Education P	Human health & social work activities Q	Arts, entertainment & recreation R	Other service activities by households, etc. S	People employed by households, etc. T	Total services G-T
	JWS7	JWS8	JWS9	JWT2	JWT3	JWT4	JWT5	JWT6	JWT7	KW78	JWT8
Jun 17	1,121	554	2,978	2,985	1,485	2,923	4,359	987	904	65	29,026
Sep 17	1,107	573	3,009	3,051	1,485	2,932	4,324	1,040	906	74	29,055
Dec 17	1,113	587	2,998	2,996	1,481	2,916	4,373	1,025	908	60	28,957
Mar 18	1,122	586	2,985	2,961	1,486	2,943	4,394	1,019	925	61	29,071
Jun 18	1,110	555	2,973	2,993	1,493	2,946	4,376	1,034	906	68	29,115
Sep 18	1,122	583	3,011	2,988	1,494	2,957	4,423	1,026	891	60	29,196
Dec 18	1,111	580	3,063	2,966	1,504	2,973	4,435	1,045	924	50	29,403
Mar 19 (r)	1,116	566	3,131	2,962	1,512	2,984	4,496	1,063	936	59	29,625
Jun 19 (p)	1,113	572	3,156	2,968	1,510	2,970	4,538	1,053	946	63	29,766
Change on quarter	-3	7	26	6	-1	-14	42	-10	10	4	141
Change %	-0.3	1.2	0.8	0.2	-0.1	-0.5	0.9	-0.9	1.1	6.4	0.5
Change on year	3	17	183	-25	18	24	162	19	40	-5	651
Change %	0.3	3.1	6.2	-0.8	1.2	0.8	3.7	1.9	4.4	-6.7	2.2

Workforce jobs enquiries 01633 456776

Sources: Employer surveys, Labour Force Survey and administrative sources

1. Workforce Jobs figures are a measure of jobs rather than people. For this reason estimates of self-employment jobs and government supported trainee jobs differ from estimates of people in self-employment and in government supported training and employment programmes shown at Table 3. The estimates for government supported trainees shown in this table exclude trainees with contracts of employment as such people are included in the estimates of employee jobs.

2. This series is not exclusively a public sector series as it includes some private sector jobs. See table 4 for estimates of public and private sector employment.

EMPLOYMENT AND JOBS

7 Actual weekly hours worked

United Kingdom (hours worked by people aged 16 and over), seasonally adjusted

	Total weekly hours (millions) ¹²	Average (mean) actual weekly hours worked			
		All workers ¹	Full-time workers ³	Part-time workers ³	Second Jobs
		YBUS	YBUY	YBVB	YBVE
People					
Jun-Aug 2017	1,030.6	32.1	37.4	16.3	9.5
Jun-Aug 2018	1,041.1	32.1	37.3	16.3	9.8
Sep-Nov 2018	1,040.1	32.0	37.1	16.3	9.7
Dec-Feb 2019	1,052.9	32.2	37.4	16.3	9.7
Mar-May 2019	1,052.4	32.1	37.4	16.3	9.6
Jun-Aug 2019	1,049.2	32.1	37.3	16.3	10.1
Change on quarter	-3.2	0.0	-0.1	-0.1	0.5
Change %	-0.3	-0.1	-0.3	-0.4	4.8
Change on year	8.1	0.0	-0.1	0.0	0.3
Change %	0.8	-0.1	-0.2	-0.2	2.6
Men					
Jun-Aug 2017	621.4	36.5	39.3	16.1	10.2
Jun-Aug 2018	624.8	36.4	39.1	16.2	10.7
Sep-Nov 2018	626.7	36.3	39.0	16.3	10.6
Dec-Feb 2019	632.3	36.5	39.2	16.4	10.5
Mar-May 2019	626.3	36.2	39.0	16.2	10.7
Jun-Aug 2019	626.5	36.3	39.0	16.3	10.7
Change on quarter	0.2	0.1	0.0	0.0	0.1
Change %	0.0	0.2	-0.1	0.2	0.9
Change on year	1.7	-0.1	-0.1	0.1	0.0
Change %	0.3	-0.2	-0.4	0.6	0.3
Women					
Jun-Aug 2017	409.2	27.1	34.2	16.4	8.9
Jun-Aug 2018	416.4	27.3	34.4	16.4	9.2
Sep-Nov 2018	413.4	27.1	34.0	16.2	9.1
Dec-Feb 2019	420.6	27.3	34.3	16.3	9.1
Mar-May 2019	426.1	27.5	34.7	16.4	8.8
Jun-Aug 2019	422.7	27.4	34.5	16.3	9.6
Change on quarter	-3.4	-0.2	-0.2	-0.1	0.7
Change %	-0.8	-0.6	-0.7	-0.5	8.1
Change on year	6.3	0.1	0.1	-0.1	0.4
Change %	1.5	0.2	0.3	-0.5	4.4

Source: Labour Force Survey

Labour market statistics enquiries: labour.market@ons.gsi.gov.uk

1 Main and second job

2 Total actual weekly hours worked including paid and unpaid overtime.

3 Main job only. The split between full-time and part-time employment is based on respondents' self-classification.

7 (1) Usual weekly hours of work¹

United Kingdom, seasonally adjusted

	All in Employment (%)			Employees (%)			Self-Employed (%)		
	People	Men	Women	People	Men	Women	People	Men	Women
Jun-Aug 2018									
Less than 6 Hours	1.4	0.9	1.9	0.9	0.6	1.2	3.4	1.9	6.3
6 up to 15 hours	6.3	3.4	9.6	5.7	2.9	8.6	9.4	5.0	18.2
16 up to 30 hours	19.9	10.2	30.8	19.4	8.9	30.2	22.7	16.0	36.0
31 up to 45 hours	54.1	59.7	47.7	56.9	63.1	50.4	38.8	45.5	25.4
Over 45 hours	18.3	25.7	10.1	17.1	24.4	9.6	25.7	31.6	14.0
Total (thousands)	32,410	17,176	15,235	27,479	13,916	13,564	4,768	3,176	1,592
Mar-May 2019									
Less than 6 Hours	1.4	0.9	2.1	1.0	0.6	1.4	3.3	1.7	6.6
6 up to 15 hours	6.3	3.6	9.2	5.6	3.0	8.2	9.5	5.6	17.2
16 up to 30 hours	20.1	10.4	30.9	19.6	8.8	30.4	23.2	16.8	35.7
31 up to 45 hours	53.9	59.7	47.4	56.8	63.5	50.0	38.2	44.3	26.1
Over 45 hours	18.3	25.5	10.4	17.1	24.1	9.9	25.9	31.7	14.4
Total (thousands)	32,749	17,280	15,469	27,626	13,897	13,729	4,955	3,294	1,661
Jun-Aug 2019									
Less than 6 Hours	1.5	0.9	2.1	1.0	0.7	1.3	3.6	1.8	7.3
6 up to 15 hours	6.4	3.5	9.6	5.8	3.0	8.7	8.7	4.8	16.5
16 up to 30 hours	19.6	10.1	30.2	19.1	8.8	29.6	22.1	15.5	35.4
31 up to 45 hours	54.0	59.8	47.5	56.8	63.4	50.2	38.7	45.2	25.5
Over 45 hours	18.6	25.7	10.6	17.2	24.2	10.1	26.9	32.6	15.3
Total (thousands)	32,693	17,256	15,437	27,577	13,867	13,710	4,930	3,297	1,633

1 Total usual weekly hours worked by people aged 16 and over in main job including paid and unpaid overtime.

Source: Labour Force Survey

Labour market statistics enquiries: labour.market@ons.gov.uk

NON-UK WORKERS

8(1) Employment levels and rates by country of birth and nationality

(first published on 13 August 2019)

United Kingdom (thousands of people aged 16 and over) not seasonally adjusted																				
Country of birth	Europe										Africa		Asia			America and Oceania				
	European Union (EU)										Other Europe (not in EU)	Total Africa	Of which: South Africa	Total Asia	Of which: India	Of which: Pakistan and Bangladesh	Total America and Oceania	Of which: USA	Of which: Australia and New Zealand	Total Non-EU ⁷
	Total ¹	UK	Non UK	Total Europe	Total EU (EU27) ²	EU14 ³	EU8 ⁴	EU2 ⁵	Other EU ⁶											
Levels (aged 16 and over)																				
Country of birth	MGTM	JF6F	JF6G	FSC2	EQ4Q	JJR3	JJR5	EQ4R	FSC3	FSC4	FSC5	JJS3	FSC6	JJS7	JJS9	FSC7	JJR7	JJS5	EQ4S	
Apr - Jun 2017	31,996	26,345	5,648	2,595	2,366	972	1,004	358	31	230	981	212	1,527	438	380	546	82	137	3,283	
Apr - Jun 2018	32,321	26,720	5,597	2,575	2,350	1,014	906	391	38	225	877	168	1,508	503	341	638	100	156	3,248	
Jul - Sep 2018	32,503	26,963	5,532	2,517	2,288	978	901	370	39	229	878	159	1,479	473	337	658	96	152	3,244	
Oct - Dec 2018	32,671	27,011	5,651	2,550	2,303	989	886	384	43	248	893	174	1,568	476	344	640	107	130	3,349	
Jan - Mar 2019	32,641	26,838	5,796	2,666	2,420	994	947	438	41	246	933	200	1,536	452	366	662	108	139	3,376	
Apr - Jun 2019	32,752	26,967	5,777	2,692	2,438	1,019	971	407	41	254	923	198	1,504	475	387	658	105	167	3,339	
Change on year	430	246	180	118	88	5	64	15	3	29	46	31	-4	-28	46	20	5	11	91	
Change %	1.3	0.9	3.2	4.6	3.8	0.5	7.1	3.9	8.4	13.1	5.3	18.4	-0.3	-5.6	13.3	3.1	4.6	7.2	2.8	
Nationality	MGTM	JF6H	JF6I	FSC8	EQ4U	JJR4	JJR6	EQ4V	FSC9	FSCE	FSD2	JJS4	FSD3	JJS8	JJT2	FSD4	JJR8	JJS6	EQ4W	
Apr - Jun 2017	31,996	28,454	3,537	2,444	2,349	1,010	995	332	11	96	314	76	508	161	95	271	74	81	1,189	
Apr - Jun 2018	32,321	28,787	3,527	2,373	2,269	990	881	387	11	103	262	55	569	211	101	324	92	103	1,258	
Jul - Sep 2018	32,503	29,028	3,467	2,341	2,231	980	880	360	11	109	249	50	545	187	91	332	100	86	1,236	
Oct - Dec 2018	32,671	29,098	3,569	2,400	2,274	1,011	869	370	24	126	277	64	593	194	107	299	96	71	1,295	
Jan - Mar 2019	32,641	28,943	3,698	2,513	2,381	1,018	925	423	16	132	273	71	597	182	115	315	101	75	1,317	
Apr - Jun 2019	32,752	29,084	3,661	2,490	2,368	1,019	952	375	22	122	289	63	567	187	121	314	78	95	1,292	
Change on year	430	298	133	118	99	29	71	-12	11	18	28	8	-2	-23	20	-10	-14	-9	34	
Change %	1.3	1.0	3.8	5.0	4.4	3.0	8.1	-3.1	95.5	17.8	10.6	13.7	-0.4	-11.1	20.0	-3.1	-14.9	-8.4	2.7	
Rates (aged 16 to 64)																				
Country of birth	LF9D	LFM6	LFM7	FSD5	EQ4Y	LFM8	LFM9	EQ4Z	FSD6	FSD7	FSD8	LFN4	FSD9	LFN6	LFN7	FSE2	LFN2	LFN5	EQ52	
Apr - Jun 2017	74.9	75.5	72.5	79.2	80.6	77.6	82.6	84.7	68.1	67.3	72.4	85.9	62.5	72.7	54.1	76.2	73.1	84.7	67.6	
Apr - Jun 2018	75.4	75.7	74.0	81.2	82.8	79.5	86.8	83.3	72.5	68.3	72.1	83.0	64.2	80.3	54.4	76.6	73.4	85.4	68.7	
Jul - Sep 2018	75.7	76.1	74.2	81.5	82.3	79.7	85.6	82.4	72.2	74.6	72.9	83.5	64.4	77.0	55.5	75.7	74.2	81.5	69.3	
Oct - Dec 2018	76.0	76.3	74.7	81.6	82.6	79.8	86.1	83.5	71.8	73.0	73.3	84.7	65.5	75.5	55.9	77.6	79.1	85.7	70.1	
Jan - Mar 2019	75.9	76.3	74.6	81.8	82.8	80.1	85.1	84.6	79.1	72.7	73.1	88.2	64.6	75.3	57.6	77.8	78.4	84.7	69.7	
Apr - Jun 2019	76.0	76.3	74.6	82.2	83.1	80.2	85.2	86.2	78.3	74.4	73.2	87.4	63.4	75.5	59.0	78.6	73.9	87.7	69.3	
Change on year	0.6	0.5	0.6	1.0	0.4	0.7	-1.6	2.9	5.8	6.1	1.1	4.4	-0.8	-4.8	4.7	2.1	0.5	2.3	0.7	
Nationality	LF9D	LFN8	LFN9	FSE3	EQ54	LFO2	LFO3	EQ55	FSE4	FSE5	FSE6	LFO6	FSE7	LFO8	LFO9	FSE8	LFO4	LFO7	EQ56	
Apr - Jun 2017	74.9	75.2	72.8	79.8	80.8	77.9	83.1	84.3	53.1	60.9	66.8	86.3	53.2	65.2	48.7	73.5	70.7	86.9	60.9	
Apr - Jun 2018	75.4	75.5	74.5	81.5	83.0	80.3	87.0	83.1	46.7	58.3	67.6	89.5	56.4	79.3	49.0	75.5	72.2	86.0	62.8	
Jul - Sep 2018	75.7	75.8	75.0	82.1	82.8	80.6	86.5	82.6	39.6	69.8	68.4	87.1	56.0	72.2	46.7	77.1	76.9	80.5	64.1	
Oct - Dec 2018	76.0	76.0	75.8	82.6	83.3	81.0	86.0	84.5	68.9	72.3	70.5	86.6	58.3	69.7	48.4	77.0	73.7	86.1	65.6	
Jan - Mar 2019	75.9	76.1	75.3	82.1	82.7	79.9	85.0	84.9	75.0	72.9	68.8	91.4	57.2	70.6	50.9	76.9	78.3	82.7	64.8	
Apr - Jun 2019	76.0	76.1	75.0	82.5	83.3	80.8	85.0	85.9	83.7	69.5	70.7	90.2	54.3	69.3	53.8	76.8	73.1	86.3	63.4	
Change on year	0.6	0.6	0.5	1.0	0.3	0.5	-2.0	2.8	36.9	11.2	3.0	0.7	-2.1	-10.0	4.9	1.3	0.9	0.3	0.6	
Source: Labour Force Survey																				

Source: Labour Force Survey

Labour market statistics enquiries: labour.market@ons.gov.uk

1. The total series includes people who do not state their country of birth or nationality. The total levels series MGTM does not therefore equal the sum of the "UK" and "Non-UK" series.

2. This series consists of all 27 EU member states excluding the UK. This series equals the sum of EU14, EU8, EU2 and Other EU.

3. Austria, Belgium, Denmark, Finland, France, Germany, Greece, Ireland, Italy, Luxembourg, Netherlands, Portugal, Spain and Sweden.

4. Czech Republic, Estonia, Hungary, Latvia, Lithuania, Poland, Slovak Republic and Slovenia.

5. Romania and Bulgaria.

6. Cyprus, Malta and Croatia

7. Total Non-EU equals the sum of Other Europe, Total Africa, Total Asia and Total America and Oceania

The estimates shown in this table relate to the number of people in employment and should not be used as a proxy for flows of foreign migrants into the UK.

NON-UK WORKERS

8(2) Unemployment and economic inactivity levels and rates by country of birth and nationality (first published on 13 August 2019)

United Kingdom (thousands of people) not seasonally adjusted

Unemployment (all aged 16 and over)						Economically inactive (all aged from 16 to 64)									
	Total ¹	UK	Non-UK	EU27 ²	Non-EU	Total ¹		UK		Non-UK		EU27 ²		Non-EU	
						All economically inactive	Of which: Students ³	All economically inactive	Of which: Students ³	All economically inactive	Of which: Students ³	All economically inactive	Of which: Students ³	All economically inactive	Of which: Students ³
Levels (thousands of people)															
By country of birth	MGTP	DSWD	DT35	DT3F	DTKB	LF9L	LF9W	DTLK	DYUP	DYUR	DYVR	DYVZ	DYWL	DYWR	DZ37
Apr - Jun 2017	1,456	1,142	314	97	217	8,875	2,431	7,080	1,882	1,783	548	467	166	1,315	382
Apr - Jun 2018	1,332	1,068	264	79	186	8,834	2,454	7,150	1,926	1,666	525	403	147	1,263	378
Jul - Sep 2018	1,446	1,156	291	85	206	8,589	2,145	6,973	1,711	1,600	431	400	136	1,200	296
Oct - Dec 2018	1,328	1,068	260	78	182	8,598	2,228	6,957	1,757	1,623	470	399	161	1,224	309
Jan - Mar 2019	1,292	1,013	279	84	195	8,663	2,373	6,992	1,851	1,654	521	409	159	1,245	362
Apr - Jun 2019	1,296	1,015	280	74	206	8,659	2,350	7,006	1,864	1,640	485	414	159	1,226	327
Change on year	-36	-53	16	-5	21	-175	-104	-144	-62	-26	-40	11	12	-38	-51
Change %	-2.7	-5.0	6.0	-6.0	11.1	-2.0	-4.2	-2.0	-3.2	-1.6	-7.6	2.8	8.0	-3.0	-13.6
By nationality	MGTP	DSWE	DT39	DTG9	DTKC	LF9L	LF9W	DYTC	DYUQ	DYUS	DYVU	DYWA	DYWM	DYWS	DZGD
Apr - Jun 2017	1,456	1,258	198	99	99	8,875	2,431	7,753	2,029	1,113	401	455	168	658	233
Apr - Jun 2018	1,332	1,172	160	72	89	8,834	2,454	7,782	2,080	1,036	372	387	143	649	229
Jul - Sep 2018	1,446	1,276	170	80	90	8,589	2,145	7,602	1,846	973	297	378	132	596	165
Oct - Dec 2018	1,328	1,154	173	76	97	8,598	2,228	7,630	1,892	954	335	377	165	577	170
Jan - Mar 2019	1,292	1,107	185	86	99	8,663	2,373	7,631	1,982	1,018	390	409	166	609	223
Apr - Jun 2019	1,296	1,110	186	71	114	8,659	2,350	7,621	1,981	1,023	366	399	162	624	204
Change on year	-36	-62	25	0	25	-175	-104	-161	-98	-13	-6	13	19	-26	-25
Change %	-2.7	-5.3	15.9	-0.1	28.8	-2.0	-4.2	-2.1	-4.7	-1.2	-1.7	3.3	13.3	-3.9	-11.1
Rates (%)															
By country of birth	MGUK	DT2W	DT3B	DTJG	DTKD	CRZK		DYTD		DYUT		DYWD		DYWT	
Apr - Jun 2017	4.4	4.2	5.3	4.0	6.2	21.6		21.1		23.4		16.1		27.9	
Apr - Jun 2018	4.0	3.8	4.5	3.2	5.4	21.4		21.1		22.5		14.4		27.4	
Jul - Sep 2018	4.3	4.1	5.0	3.6	6.0	20.8		20.6		21.9		14.6		26.2	
Oct - Dec 2018	3.9	3.8	4.4	3.3	5.1	20.8		20.6		21.9		14.6		26.1	
Jan - Mar 2019	3.8	3.6	4.6	3.4	5.5	21.0		20.8		21.8		14.3		26.3	
Apr - Jun 2019	3.8	3.6	4.6	2.9	5.8	21.0		20.8		21.7		14.4		26.3	
Change on year	-0.2	-0.2	0.1	-0.3	0.4	-0.5		-0.4		-0.8		-0.1		-1.1	
By nationality	MGUK	DT2Z	DT3D	DTKA	DTLH	CRZK		DYUO		DYUU		DYWE		DZ36	
Apr - Jun 2017	4.4	4.2	5.3	4.0	7.7	21.6		21.3		23.1		15.8		34.1	
Apr - Jun 2018	4.0	3.9	4.3	3.1	6.6	21.4		21.3		22.1		14.3		32.8	
Jul - Sep 2018	4.3	4.2	4.7	3.5	6.8	20.8		20.7		21.3		14.2		31.3	
Oct - Dec 2018	3.9	3.8	4.6	3.2	7.0	20.8		20.8		20.5		14.0		29.5	
Jan - Mar 2019	3.8	3.7	4.8	3.5	7.0	21.0		20.9		21.0		14.4		30.3	
Apr - Jun 2019	3.8	3.7	4.8	2.9	8.1	21.0		20.9		21.2		14.2		31.0	
Change on year	-0.2	-0.2	0.5	-0.1	1.5	-0.5		-0.4		-1.0		-0.1		-1.8	

Source: Labour Force Survey
Labour market statistics enquiries: labour.market@ons.gov.uk

1. The total series includes people who do not state their country of birth or nationality. The total levels series therefore do not equal the sum of the "UK" and "Non-UK" series.
2. This series consists of all 27 EU member states excluding the UK.
3. This series consists of those people whose main reason for being economically inactive was because they were students. It does not include all students as some students will be included in the employment and unemployment estimates.

UNEMPLOYMENT

9(1) Unemployment by age and duration

United Kingdom (thousands) seasonally adjusted

		All aged 16 & over							All aged 16 - 64						
		All	Rate(%) ¹	Up to 6 months	Over 6 and up to 12 months	All over 12 months	% over 12 months	All over 24 months	All	Rate(%) ¹	Up to 6 months	Over 6 and up to 12 months	All over 12 months	% over 12 months	All over 24 months
		1	2	3	4	5	6	7	8	9	10	11	12	13	14
People		MGSC	MGSX	YBWF	YBWG	YBWH	YBWI	YBWL	LF2I	LF2Q	LF2Y	LF32	LF34	LF36	LF38
	Jun-Aug 2017	1,452	4.3	841	229	382	26.3	211	1,428	4.4	834	223	370	25.9	208
	Jun-Aug 2018	1,363	4.0	800	208	355	26.0	196	1,345	4.1	792	205	348	25.9	195
	Sep-Nov 2018	1,370	4.0	807	216	347	25.3	172	1,355	4.2	795	212	348	25.7	170
	Dec-Feb 2019	1,343	3.9	796	200	347	25.8	173	1,323	4.0	786	196	340	25.7	169
	Mar-May 2019	1,292	3.8	766	187	340	26.3	173	1,276	3.9	760	184	332	26.0	168
	Jun-Aug 2019	1,314	3.9	808	173	333	25.3	159	1,297	4.0	804	170	323	24.9	154
	Change on quarter	22	0.1	42	-14	-7	-0.9	-14	21	0.1	44	-14	-9	-1.1	-14
	Change %	1.7		5.5	-7.5	-2.0		-7.9	1.6		5.8	-7.7	-2.6		-8.5
	Change on year	-49	-0.2	9	-36	-22	-0.7	-37	-48	-0.2	11	-35	-24	-0.9	-41
	Change %	-3.6		1.1	-17.2	-6.2		-19.0	-3.6		1.4	-16.9	-7.0		-21.1
Men		MGSD	MGSY	MGYK	MGYM	MGYO	YBWJ	YBWM	YBSI	YBTJ	YBWP	YBWS	YBWW	YBWW	YBWB
	Jun-Aug 2017	780	4.4	417	140	223	28.6	127	764	4.5	412	136	217	28.3	126
	Jun-Aug 2018	733	4.1	407	110	217	29.6	117	721	4.2	401	108	212	29.4	116
	Sep-Nov 2018	739	4.1	403	124	212	28.6	113	730	4.2	395	121	214	29.3	112
	Dec-Feb 2019	731	4.1	399	118	215	29.4	114	719	4.2	396	116	208	28.9	111
	Mar-May 2019	712	4.0	395	107	211	29.6	109	704	4.1	391	105	208	29.5	109
	Jun-Aug 2019	727	4.0	419	96	213	29.2	106	716	4.2	418	93	205	28.7	101
	Change on quarter	15	0.1	24	-11	2	-0.3	-4	13	0.1	26	-12	-2	-0.8	-7
	Change %	2.1		6.2	-10.6	0.9		-3.4	1.8		6.8	-11.0	-1.1		-6.8
	Change on year	-6	-0.1	12	-14	-5	-0.4	-12	-5	0.0	17	-15	-7	-0.8	-15
	Change %	-0.8		3.0	-12.6	-2.1		-10.0	-0.7		4.2	-13.5	-3.3		-12.8
Women		MGSE	MGSZ	MGYL	MGYN	MGYP	YBWK	YBWN	LF2J	LF2R	LF2Z	LF33	LF35	LF37	LF39
	Jun-Aug 2017	672	4.3	424	89	159	23.6	84	664	4.3	423	88	154	23.2	82
	Jun-Aug 2018	629	4.0	393	99	138	21.9	79	624	4.1	391	97	136	21.7	79
	Sep-Nov 2018	631	4.0	404	92	135	21.4	58	626	4.1	400	91	135	21.5	58
	Dec-Feb 2019	611	3.8	397	82	132	21.6	59	603	3.9	390	80	132	22.0	58
	Mar-May 2019	580	3.6	371	80	129	22.2	63	573	3.7	368	80	125	21.7	60
	Jun-Aug 2019	586	3.7	389	77	120	20.5	53	581	3.8	386	77	118	20.3	53
	Change on quarter	6	0.0	18	-3	-9	-1.7	-10	8	0.1	17	-3	-6	-1.4	-7
	Change %	1.1		4.8	-3.4	-6.7		-15.8	1.5		4.7	-3.3	-5.1		-11.7
	Change on year	-43	-0.3	-4	-22	-17	-1.3	-26	-43	-0.3	-6	-20	-17	-1.4	-26
	Change %	-6.8		-1.0	-22.2	-12.5		-32.6	-6.9		-1.4	-20.7	-12.9		-33.3

		16-17							18-24						
		All	Rate(%) ¹	Up to 6 months	Over 6 and up to 12 months	All over 12 months	% over 12 months	All over 24 months	All	Rate(%) ¹	Up to 6 months	Over 6 and up to 12 months	All over 12 months	% over 12 months	All over 24 months
		15	16	17	18	19	20	21	22	23	24	25	26	27	28
People		YBVH	YBVK	YBXD	YBXG	YBXJ	YBXM	YBXP	YBVN	YBVQ	YBXS	YBXV	YBXY	YBYB	YBYE
	Jun-Aug 2017	106	23.5	83	18	*	*	*	427	10.9	271	76	80	18.6	29
	Jun-Aug 2018	94	21.9	73	16	6	6.5	*	373	9.6	247	61	65	17.6	21
	Sep-Nov 2018	103	24.8	83	17	*	*	*	408	10.3	271	64	73	17.8	25
	Dec-Feb 2019	88	21.0	69	12	7	8.1	*	404	10.3	276	66	63	15.6	16
	Mar-May 2019	83	19.6	66	11	7	8.1	*	410	10.7	273	67	70	17.0	17
	Jun-Aug 2019	86	20.3	66	14	6	6.5	*	408	10.8	284	47	78	19.1	18
	Change on quarter	3	0.7	0	3	-1	-1.7	*	-1	0.2	11	-20	8	2.1	1
	Change %	3.2		0.8	31.8	-17.9		*	-0.4		3.9	-30.4	11.7		8.7
	Change on year	-9	-1.6	-7	-2	-1	0.0	*	36	1.2	37	-14	13	1.5	-2
	Change %	-9.3		-9.2	-9.8	-9.7		*	9.6		15.1	-23.2	19.2		-10.9
Men		YBVI	YBVL	YBXE	YBXH	YBXK	YBXN	YBXQ	YBVO	YBVR	YBXT	YBXW	YBXZ	YBYC	YBYF
	Jun-Aug 2017	57	25.8	46	9	*	*	*	247	12.1	138	54	55	22.1	20
	Jun-Aug 2018	49	22.4	35	8	5	9.6	*	211	10.4	133	35	43	20.2	13
	Sep-Nov 2018	53	26.4	40	10	*	*	*	236	11.3	145	38	54	22.8	22
	Dec-Feb 2019	50	23.8	38	7	6	11.4	*	248	12.0	162	43	43	17.3	13
	Mar-May 2019	47	23.0	38	*	*	*	*	249	12.5	156	43	50	20.1	13
	Jun-Aug 2019	50	24.2	38	8	*	*	*	246	12.4	161	30	56	22.7	14
	Change on quarter	3	1.2	0	*	*	*	*	-3	-0.1	5	-14	6	2.7	0
	Change %	7.4		0.2	*	*	*	*	-1.4		3.0	-32.0	11.7		3.6
	Change on year	2	1.9	3	0	*	*	*	35	2.1	27	-6	13	2.5	0
	Change %	3.1		7.0	-4.9	*	*	*	16.7		20.5	-15.7	31.3		1.5
Women		YBVJ	YBVM	YBXF	YBXI	YBXL	YBXO	YBXR	YBVP	YBVS	YBXU	YBXX	YBYA	YBYD	YBYG
	Jun-Aug 2017	49	21.3	36	9	*	*	*	181	9.6	133	22	25	13.9	9
	Jun-Aug 2018	46	21.4	37	7	*	*	*	162	8.8	113	26	23	14.2	7
	Sep-Nov 2018	50	23.4	42	7	*	*	*	172	9.2	126	26	19	11.0	*
	Dec-Feb 2019	38	18.1	32	5	*	*	*	156	8.3	113	22	20	13.0	*
	Mar-May 2019	36	16.4	28	6	*	*	*	160	8.7	117	24	20	12.3	*
	Jun-Aug 2019	36	16.5	28	6	*	*	*	162	9.1	123	17	22	13.6	5
	Change on quarter	-1	0.1	0	0	*	*	*	2	0.3	6	-6	2	1.3	*
	Change %	-2.1		1.5	-4.6	*	*	*	1.2		5.2	-27.6	12.0		*
	Change on year	-10	-4.9	-9	-1	*	*	*	1	0.2	10	-9	-1	-0.5	-2
	Change %	-22.4		-24.6	-15.3	*	*	*	0.4		8.7	-33.4	-3.3		-34.3

Relationship between columns: 1=3+4+5; 8=10+11+12; 15=17+18+19; 22=24+25+26.

¹Denominator = economically active for that age group.

Source: Labour Force Survey

Labour market statistics enquiries: labour.market@ons.gov.uk

UNEMPLOYMENT

9(2) Unemployment by age and duration

United Kingdom (thousands) seasonally adjusted

		25-49							50 and over						
		All	Rate (%) ¹	Up to 6 months	Over 6 and up to 12 months	All over 12 months	% over 12 months	All over 24 months	All	Rate (%) ¹	Up to 6 months	Over 6 and up to 12 months	All over 12 months	% over 12 months	All over 24 months
		1	2	3	4	5	6	7	8	9	10	11	12	13	14
		MGVI	MGXB	YBYH	YBYK	YBYN	YBYQ	YBYT	YBVT	YBVW	YBYW	YBYZ	YBZC	YBZF	YBZI
People	Jun-Aug 2017	616	3.3	352	82	181	29.5	105	303	3.0	135	52	117	38.4	74
	Jun-Aug 2018	595	3.1	331	86	178	30.0	108	301	2.8	149	47	105	34.8	66
	Sep-Nov 2018	575	3.0	326	91	158	27.4	77	284	2.7	128	44	112	39.6	68
	Dec-Feb 2019	561	3.0	322	83	156	27.8	85	289	2.7	128	40	121	41.8	71
	Mar-May 2019	524	2.8	299	68	156	29.8	93	275	2.6	128	41	107	38.7	63
	Jun-Aug 2019	548	2.9	324	69	155	28.2	79	271	2.5	134	43	94	34.8	59
	Change on quarter	25	0.1	25	1	-1	-1.6	-14	-4	-0.1	6	2	-12	-3.9	-3
	Change %	4.7		8.4	1.2	-0.9		-14.9	-1.6		4.6	5.2	-11.6		-5.4
	Change on year	-46	-0.3	-7	-16	-23	-1.7	-29	-30	-0.3	-15	-4	-10	0.0	-7
	Change %	-7.8		-2.0	-19.2	-13.1		-26.9	-9.9		-10.3	-8.2	-10.0		-10.3
Men		MGVJ	MGXC	YBYI	YBYL	YBYO	YBYR	YBYU	YBVU	YBVX	YBYX	YBZA	YBZD	YBZG	YBZJ
	Jun-Aug 2017	296	3.0	157	43	96	32.4	62	180	3.3	76	33	71	39.5	44
	Jun-Aug 2018	312	3.1	164	41	108	34.5	70	162	2.9	74	25	62	38.5	34
	Sep-Nov 2018	294	2.9	154	52	87	29.7	51	155	2.7	64	24	67	43.4	40
	Dec-Feb 2019	272	2.7	138	44	89	32.9	58	161	2.8	60	24	77	47.7	42
	Mar-May 2019	266	2.6	140	36	90	33.7	59	150	2.6	61	23	66	44.2	38
	Jun-Aug 2019	272	2.7	147	32	93	34.2	50	159	2.8	73	26	60	37.4	42
	Change on quarter	6	0.1	7	-5	3	0.5	-9	9	0.2	12	4	-7	-6.8	4
	Change %	2.3		5.3	-12.7	3.7		-14.7	6.1		20.3	15.4	-10.3		10.2
	Change on year	-40	-0.4	-17	-9	-15	-0.3	-20	-2	-0.1	-1	1	-3	-1.1	7
	Change %	-12.9		-10.2	-21.8	-13.7		-28.4	-1.5		-0.9	3.7	-4.2		21.6
Women		MGVK	MGXD	YBYJ	YBYM	YBYP	YBYS	YBYV	YBVV	YBVY	YBYY	YBZB	YBZE	YBZH	YBZK
	Jun-Aug 2017	320	3.6	195	39	85	26.7	43	123	2.6	59	19	45	36.9	30
	Jun-Aug 2018	282	3.2	167	45	70	25.0	39	139	2.8	75	21	43	30.6	32
	Sep-Nov 2018	281	3.2	172	38	70	25.0	26	128	2.6	63	20	45	35.0	29
	Dec-Feb 2019	289	3.2	184	39	66	22.9	27	128	2.5	68	16	44	34.4	29
	Mar-May 2019	258	2.9	159	32	67	25.8	35	125	2.5	67	18	40	32.2	25
	Jun-Aug 2019	276	3.1	177	37	62	22.4	29	112	2.2	61	16	35	31.1	18
	Change on quarter	19	0.2	18	5	-5	-3.4	-5	-13	-0.3	-7	-1	-6	-1.1	-7
	Change %	7.2		11.2	17.1	-7.0		-15.3	-10.7		-9.7	-7.9	-13.7		-29.2
	Change on year	-6	-0.1	10	-8	-9	-2.6	-9	-27	-0.6	-15	-5	-8	0.5	-14
	Change %	-2.1		6.1	-16.8	-12.2		-24.0	-19.7		-19.5	-22.6	-18.5		-44.8

Relationship between columns: 1=3+4+5; 8=10+11+12.

¹Denominator = economically active for that age group.

Source: Labour Force Survey

Labour market statistics enquiries: labour.market@ons.gov.uk

ECONOMIC ACTIVITY AND INACTIVITY

10 Economic activity by age

United Kingdom (thousands) seasonally adjusted

All aged 16 & over	16 - 64	16 - 17	18 - 24	25 - 34	35 - 49	50 - 64	65+
1	2	3	4	5	6	7	8

Economically active

People	MGSF	LF2K	YBZL	YBZO	YBZR	YBZU	LF3A	LFK8
Jun-Aug 2017	33,556	32,358	450	3,932	7,712	11,179	9,086	1,198
Jun-Aug 2018	33,773	32,518	432	3,863	7,731	11,160	9,333	1,255
Sep-Nov 2018	33,912	32,627	416	3,949	7,747	11,177	9,338	1,285
Dec-Feb 2019	34,063	32,761	420	3,933	7,812	11,168	9,428	1,302
Mar-May 2019	34,041	32,698	425	3,842	7,818	11,157	9,455	1,343
Jun-Aug 2019	34,006	32,663	423	3,774	7,822	11,142	9,501	1,344
Change on quarter	-35	-35	-1	-68	4	-15	46	0
Change %	-0.1	-0.1	-0.3	-1.8	0.0	-0.1	0.5	0.0
Change on year	233	145	-9	-88	91	-17	168	89
Change %	0.7	0.4	-2.0	-2.3	1.2	-0.2	1.8	7.1
Men	MGSG	YBSL	YBZM	YBZP	YBZS	YBZV	YBZY	YCAE
Jun-Aug 2017	17,783	17,051	222	2,045	4,135	5,886	4,764	732
Jun-Aug 2018	17,909	17,162	217	2,035	4,151	5,878	4,880	747
Sep-Nov 2018	18,013	17,216	201	2,090	4,176	5,873	4,877	797
Dec-Feb 2019	18,043	17,252	211	2,061	4,191	5,869	4,919	791
Mar-May 2019	17,993	17,185	202	2,000	4,200	5,870	4,914	807
Jun-Aug 2019	17,984	17,201	206	1,982	4,195	5,877	4,940	782
Change on quarter	-9	16	4	-18	-5	7	27	-25
Change %	0.0	0.1	2.0	-0.9	-0.1	0.1	0.5	-3.1
Change on year	74	39	-10	-54	44	-1	60	35
Change %	0.4	0.2	-4.8	-2.6	1.1	0.0	1.2	4.7
Women	MGSF	LF2L	YBZN	YBZQ	YBZT	YBZW	LF3B	LFK9
Jun-Aug 2017	15,774	15,308	228	1,887	3,577	5,293	4,322	466
Jun-Aug 2018	15,864	15,356	215	1,827	3,580	5,281	4,453	508
Sep-Nov 2018	15,899	15,411	215	1,860	3,571	5,303	4,461	488
Dec-Feb 2019	16,021	15,509	209	1,871	3,621	5,299	4,509	511
Mar-May 2019	16,048	15,512	222	1,842	3,619	5,287	4,542	536
Jun-Aug 2019	16,023	15,462	217	1,793	3,627	5,265	4,560	561
Change on quarter	-26	-51	-5	-50	8	-22	19	25
Change %	-0.2	-0.3	-2.4	-2.7	0.2	-0.4	0.4	4.7
Change on year	159	105	2	-35	47	-17	108	54
Change %	1.0	0.7	0.8	-1.9	1.3	-0.3	2.4	10.6

Economic activity rates (%)¹

People	MGWG	LF22	YCAC	YCAJ	YCAM	YCAP	LF2C	LFL2
Jun-Aug 2017	63.6	78.6	31.6	69.5	86.8	87.2	73.4	10.3
Jun-Aug 2018	63.7	78.8	31.0	69.1	86.6	87.4	74.3	10.6
Sep-Nov 2018	63.8	79.0	29.9	70.9	86.7	87.6	74.0	10.9
Dec-Feb 2019	64.0	79.3	30.2	70.9	87.3	87.6	74.5	11.0
Mar-May 2019	63.9	79.1	30.5	69.5	87.3	87.6	74.4	11.3
Jun-Aug 2019	63.8	79.0	30.3	68.5	87.3	87.6	74.5	11.2
Change on quarter	-0.1	-0.1	-0.2	-1.0	0.0	-0.1	0.1	0.0
Change on year	0.1	0.2	-0.7	-0.5	0.7	0.2	0.3	0.6
Men	MGWH	MGSP	YCAH	YCAK	YCAN	YCAQ	MGWQ	MGWT
Jun-Aug 2017	68.9	83.4	30.4	70.9	93.3	93.0	78.3	13.7
Jun-Aug 2018	69.0	83.6	30.4	71.3	92.8	93.2	79.1	13.7
Sep-Nov 2018	69.3	83.9	28.2	73.4	93.2	93.2	78.8	14.6
Dec-Feb 2019	69.3	84.0	29.7	72.7	93.3	93.3	79.2	14.4
Mar-May 2019	69.0	83.6	28.4	70.8	93.4	93.4	78.8	14.6
Jun-Aug 2019	68.9	83.6	28.9	70.5	93.2	93.5	79.0	14.1
Change on quarter	-0.1	0.0	0.5	-0.4	-0.2	0.2	0.2	-0.5
Change on year	-0.1	0.0	-1.5	-0.8	0.4	0.3	-0.1	0.4
Women	MGWI	LF23	YCAI	YCAL	YCAO	YCAR	LF2D	LFL3
Jun-Aug 2017	58.5	73.9	32.9	68.1	80.4	81.5	68.6	7.4
Jun-Aug 2018	58.6	74.0	31.6	66.8	80.4	81.7	69.6	8.0
Sep-Nov 2018	58.6	74.3	31.7	68.2	80.1	82.1	69.4	7.7
Dec-Feb 2019	59.0	74.7	30.7	68.9	81.2	82.1	69.9	8.0
Mar-May 2019	59.0	74.7	32.7	68.1	81.1	82.0	70.2	8.4
Jun-Aug 2019	58.9	74.4	31.9	66.5	81.3	81.7	70.2	8.7
Change on quarter	-0.2	-0.3	-0.9	-1.6	0.2	-0.3	0.0	0.4
Change on year	0.3	0.4	0.3	-0.3	1.0	0.1	0.7	0.7

Relationship between columns: 1= 2+8; 2=3+4+5+6+7.

¹Denominator = all persons in the relevant age group.

Data source: Labour Force Survey

Labour market statistics enquiries: labour.market@ons.gov.uk

ECONOMIC ACTIVITY AND INACTIVITY

11 Economic inactivity: reasons

United Kingdom (thousands) seasonally adjusted

		Total aged 16-64	Economic inactivity by reason (aged 16 to 64)						Wanting/not wanting a job (aged 16 to 64)		
			Student	Looking after family / home	Temp sick	Long-term sick	Discouraged workers	Retired	Other	Does not want job	Wants a job ¹
		1	2	3	4	5	6	7	8	9	10
		LF2M	LF63	LF65	LF67	LF69	LFL8	LF6B	LF6D	LFL9	LFM2
People											
	Jun-Aug 2017	8,806	2,333	2,073	183	2,023	33	1,190	971	6,791	2,016
	Jun-Aug 2018	8,740	2,364	2,041	168	2,032	31	1,120	983	6,832	1,907
	Sep-Nov 2018	8,650	2,265	2,048	179	1,992	35	1,123	1,008	6,799	1,851
	Dec-Feb 2019	8,536	2,227	2,008	189	1,979	33	1,111	990	6,707	1,830
	Mar-May 2019	8,619	2,289	2,014	165	2,016	31	1,120	984	6,776	1,844
	Jun-Aug 2019	8,676	2,316	1,980	169	2,069	39	1,120	982	6,792	1,884
	Change on quarter	57	27	-34	4	53	8	1	-2	16	40
	Change %	0.7	1.2	-1.7	2.5	2.6	27.1	0.1	-0.2	0.2	2.2
	Change on year	-63	-48	-61	1	37	8	0	-1	-40	-23
Change %	-0.7	-2.0	-3.0	0.3	1.8	26.4	0.0	-0.1	-0.6	-1.2	
Men		YBSO	BEEX	BEAQ	BEDI	BEDL	YCFP	BEDR	BEDU	YBWA	YBWD
	Jun-Aug 2017	3,404	1,174	229	91	997	19	476	418	2,583	821
	Jun-Aug 2018	3,356	1,179	221	76	995	17	455	412	2,576	780
	Sep-Nov 2018	3,314	1,133	228	84	948	24	475	423	2,566	747
	Dec-Feb 2019	3,290	1,122	212	94	939	22	491	409	2,557	733
	Mar-May 2019	3,368	1,168	224	86	948	20	500	422	2,618	751
	Jun-Aug 2019	3,366	1,160	227	73	962	24	508	411	2,598	768
	Change on quarter	-3	-8	3	-13	14	4	8	-11	-20	17
	Change %	-0.1	-0.7	1.4	-15.0	1.5	19.2	1.5	-2.5	-0.8	2.3
	Change on year	10	-19	6	-3	-33	7	53	-1	22	-12
Change %	0.3	-1.6	2.7	-3.9	-3.3	41.0	11.6	-0.3	0.8	-1.5	
Women		LF2N	LF64	LF66	LF68	LF6A	LFM3	LF6C	LF6E	LFM4	LFM5
	Jun-Aug 2017	5,402	1,159	1,844	92	1,026	14	714	553	4,208	1,194
	Jun-Aug 2018	5,384	1,186	1,820	92	1,037	14	665	571	4,256	1,128
	Sep-Nov 2018	5,336	1,133	1,820	95	1,043	11	648	585	4,232	1,104
	Dec-Feb 2019	5,246	1,105	1,796	95	1,039	10	620	580	4,150	1,096
	Mar-May 2019	5,251	1,122	1,790	78	1,069	11	619	562	4,158	1,093
	Jun-Aug 2019	5,310	1,156	1,753	95	1,107	15	612	571	4,194	1,116
	Change on quarter	59	35	-37	17	38	5	-7	9	36	23
	Change %	1.1	3.1	-2.1	21.8	3.6	42.0	-1.1	1.6	0.9	2.1
	Change on year	-74	-29	-67	4	70	1	-53	0	-62	-12
Change %	-1.4	-2.5	-3.7	3.8	6.8	8.8	-7.9	0.0	-1.5	-1.0	
Percentage of economically inactive aged from 16 to 64 (%)											
People		LF6V	LF6X	LF6Z	LF73	LF75	LF77	LF79	LF7B	LF7D	LF7F
	Jun-Aug 2017	100	26.5	23.5	2.1	23.0	0.4	13.5	11.0	77.1	22.9
	Jun-Aug 2018	100	27.1	23.3	1.9	23.2	0.4	12.8	11.3	78.2	21.8
	Sep-Nov 2018	100	26.2	23.7	2.1	23.0	0.4	13.0	11.7	78.6	21.4
	Dec-Feb 2019	100	26.1	23.5	2.2	23.2	0.4	13.0	11.6	78.6	21.4
	Mar-May 2019	100	26.6	23.4	1.9	23.4	0.4	13.0	11.4	78.6	21.4
	Jun-Aug 2019	100	26.7	22.8	1.9	23.8	0.5	12.9	11.3	78.3	21.7
	Men		BEBP	BEEH	BEEK	BEEN	BEEQ	BEET	BEEW	BEEZ	BEAS
Jun-Aug 2017		100	34.5	6.7	2.7	29.3	0.6	14.0	12.3	75.9	24.1
Jun-Aug 2018		100	35.1	6.6	2.3	29.7	0.5	13.6	12.3	76.8	23.2
Sep-Nov 2018		100	34.2	6.9	2.5	28.6	0.7	14.3	12.8	77.4	22.6
Dec-Feb 2019		100	34.1	6.4	2.9	28.5	0.7	14.9	12.4	77.7	22.3
Mar-May 2019		100	34.7	6.6	2.6	28.1	0.6	14.9	12.5	77.7	22.3
Jun-Aug 2019		100	34.5	6.7	2.2	28.6	0.7	15.1	12.2	77.2	22.8
Women		LF6W	LF6Y	LF72	LF74	LF76	LF78	LF7A	LF7C	LF7E	LF7G
	Jun-Aug 2017	100	21.5	34.1	1.7	19.0	0.3	13.2	10.2	77.9	22.1
	Jun-Aug 2018	100	22.0	33.8	1.7	19.3	0.3	12.3	10.6	79.1	20.9
	Sep-Nov 2018	100	21.2	34.1	1.8	19.5	0.2	12.1	11.0	79.3	20.7
	Dec-Feb 2019	100	21.1	34.2	1.8	19.8	0.2	11.8	11.1	79.1	20.9
	Mar-May 2019	100	21.4	34.1	1.5	20.4	0.2	11.8	10.7	79.2	20.8
	Jun-Aug 2019	100	21.8	33.0	1.8	20.8	0.3	11.5	10.8	79.0	21.0

Relationship between columns : 1=2+3+4+5+6+7+8; 1=9+10.

Data Source: Labour Force Survey.

Labour market statistics enquiries: labour.market@ons.gov.uk

1. This series comprises those who say they would like a regular paid job, but who do not meet the internationally agreed definition of unemployment because they have not been looking for work in the last four weeks and/or they were unable to start working within two weeks.

ECONOMIC ACTIVITY AND INACTIVITY

12 Educational status, economic activity and inactivity of people aged from 16 to 24

June - August 2019

United Kingdom (thousands) seasonally adjusted

	All aged 16 to 24				In full-time education (FTE)				Not in full-time education (FTE) ¹			
	Total	Employed	Unemployed	Economically inactive	Total	Employed ²	Unemployed ²	Economically inactive	Total	Employed	Unemployed	Economically inactive
	1	2	3	4	5	6	7	8	9	10	11	12

Levels

People

16-17	1,395	338	86	971	1,196	252	58	885	199	85	27	86
18-24	5,509	3,366	408	1,734	1,859	609	79	1,170	3,650	2,757	330	564
16-24	6,903	3,704	494	2,706	3,054	862	137	2,055	3,849	2,842	357	650

Men

16-17	714	156	50	508	599	104	30	465	116	52	20	43
18-24	2,813	1,736	246	831	890	255	33	601	1,923	1,480	213	230
16-24	3,528	1,892	296	1,339	1,489	360	63	1,066	2,039	1,532	233	273

Women

16-17	680	181	36	463	597	148	29	420	83	34	7	43
18-24	2,695	1,630	162	903	969	354	45	569	1,727	1,276	117	334
16-24	3,376	1,811	198	1,366	1,566	502	74	990	1,810	1,310	124	377

Changes on quarter

People

16-17	3	-4	3	4	-22	-4	-3	-15	25	0	6	19
18-24	-21	-66	-1	47	7	-5	-3	15	-28	-61	2	32
16-24	-18	-70	1	51	-15	-9	-6	1	-3	-61	8	50

Men

16-17	2	1	3	-3	-8	0	-4	-4	9	1	7	1
18-24	-11	-14	-3	7	-19	-16	-13	9	8	1	9	-2
16-24	-9	-14	0	4	-27	-16	-16	5	18	2	16	-1

Women

16-17	1	-5	-1	7	-14	-4	0	-11	15	-1	-1	17
18-24	-10	-52	2	40	26	10	10	6	-36	-62	-8	34
16-24	-9	-56	1	46	12	6	10	-4	-21	-63	-9	51

Rates(%)³

People

16-17	24.2	20.3	69.7	21.1	18.8	74.0	42.9	24.2	43.4
18-24	61.1	10.8	31.5	32.8	11.5	63.0	75.5	10.7	15.4
16-24	53.7	11.8	39.2	28.2	13.7	67.3	73.8	11.2	16.9

Men

16-17	21.9	24.2	71.1	17.4	22.1	77.6	44.9	28.2	37.5
18-24	61.7	12.4	29.5	28.7	11.6	67.5	77.0	12.6	12.0
16-24	53.6	13.5	38.0	24.2	14.9	71.6	75.2	13.2	13.4

Women

16-17	26.6	16.5	68.1	24.7	16.3	70.4	40.2	17.1	51.5
18-24	60.5	9.1	33.5	36.6	11.4	58.8	73.9	8.4	19.3
16-24	53.7	9.9	40.5	32.0	12.9	63.2	72.4	8.6	20.8

Changes on quarter

People

16-17	-0.3	0.7	0.2	0.1	-0.6	0.1	-6.1	4.4	4.6
18-24	-1.0	0.2	1.0	-0.4	-0.3	0.6	-1.1	0.2	1.0
16-24	-0.9	0.2	0.8	-0.2	-0.4	0.4	-1.5	0.4	1.3

Men

16-17	0.0	1.2	-0.5	0.2	-2.2	0.3	-3.4	7.9	-2.0
18-24	-0.3	-0.1	0.4	-1.1	-2.9	2.4	-0.3	0.5	-0.2
16-24	-0.2	0.1	0.2	-0.6	-2.6	1.6	-0.6	0.8	-0.2

Women

16-17	-0.7	0.1	0.9	-0.1	0.6	-0.1	-10.1	-2.0	13.7
18-24	-1.7	0.3	1.6	0.1	1.9	-1.0	-2.0	-0.1	2.3
16-24	-1.5	0.3	1.5	0.2	1.4	-0.8	-2.6	-0.2	3.0

Relationship between columns: 1=5+9; 2=6+10; 3=7+11.

Source: Labour Force Survey

Labour market statistics enquiries: labour.market@ons.gov.uk

1. Not in full-time education includes people in part-time education and/or some form of training. Estimates of the number of young people who were not in employment, education or training ("NEET") cannot therefore be derived from this table. Estimates of young people who were NEET are published separately at:

<https://www.ons.gov.uk/employmentandlabourmarket/peopleinwork/unemployment/bulletins/youngpeoplenotinfulltimeeducationemploymentortrainingneet/latest>

2. People in full-time education are employed if they have a part-time job or unemployed if they are looking for part-time employment.

3. Denominator = all persons in the relevant age group for economically active, total in employment and economically inactive; economically active for unemployment.

EARNINGS

13 Average Weekly Earnings (nominal) - total pay¹

Standard Industrial Classification (2007)

Great Britain, seasonally adjusted

	Whole Economy (100%) ²			Private sector (82%) ²			Public sector (18%) ²		
	Weekly Earnings (£)	% changes year on year		Weekly Earnings (£)	% changes year on year		Weekly Earnings (£)	% changes year on year	
		Single month	3 month average ³		Single month	3 month average ³		Single month	3 month average ³
	KAB9	KAC2	KAC3	KAC4	KAC5	KAC6	KAC7	KAC8	KAC9
Aug 17	506	2.4	2.3	505	2.6	2.5	514	1.6	1.4
Jun 18 (r)	519	2.0	2.4	517	1.9	2.3	524	2.4	2.1
Jul 18	520	3.2	2.6	519	3.3 (r)	2.6	526	2.7	2.3
Aug 18	523 (r)	3.2	2.8	521	3.3	2.8	528	2.7	2.6
Sep 18	524	2.9	3.1	523	2.8	3.1	528	2.7	2.7
Oct 18	527	4.0	3.4 (r)	528	4.4	3.5	530	2.7	2.7
Nov 18	527	3.4	3.4	526	3.4	3.6	531	2.9	2.8
Dec 18	528	3.3	3.5	528	3.4	3.7	532	2.8	2.8
Jan 19	530	3.9	3.5	529	4.1	3.6	533	2.7	2.8
Feb 19	529	3.4	3.5	528	3.6	3.7	533	2.3	2.6
Mar 19	530	2.8	3.3	529	2.3	3.3	534	2.6	2.6
Apr 19	534	3.6	3.3	533	4.0	3.3	544	4.5	3.1
May 19	537	4.0	3.5	536	4.1	3.5	542	3.8	3.6
Jun 19 (r)	539	3.9	3.8	537	3.8	4.0	543	3.7	4.0
Jul 19 (r)	541	3.9	3.9	539	4.0	4.0	546	3.7	3.7
Aug 19 (p)	542	3.6	3.8	541	3.7	3.8	545	3.3	3.5

	Services, SIC 2007 sections G-S (85%) ²			Finance and business services, SIC 2007 sections K-N (22%) ²			Public sector excluding financial services (17%) ²		
	Weekly Earnings (£)	% changes year on year		Weekly Earnings (£)	% changes year on year		Weekly Earnings (£)	% changes year on year	
		Single month	3 month average ³		Single month	3 month average ³		Single month	3 month average ³
	K5BZ	K5C2	K5C3	K5C4	K5C5	K5C6	KAD8	KAD9	KAE2
Aug 17	491	2.5	2.5	650	3.4	2.8	510	1.7	1.5
Jun 18 (r)	503	1.9	2.3	657	0.3	1.4	519	2.5	2.2
Jul 18 (r)	505	3.4	2.5	665	3.3	1.5	522	2.9	2.4
Aug 18 (r)	507	3.3	2.9	664	2.2	1.9	524	2.7	2.7
Sep 18	508	3.0	3.2	667	1.6	2.3 (r)	524	2.7	2.8
Oct 18	514	4.5	3.6	675	4.3	2.7	526	2.7	2.7
Nov 18	512	3.5	3.7	677	4.3	3.4	527	3.0	2.8
Dec 18	513	3.4	3.8	675	3.2	3.9	528	2.9	2.9
Jan 19	515	4.1	3.7	680	5.0	4.1	529	2.8	2.9
Feb 19	514	3.5	3.7	675	3.4	3.8	529	2.3	2.6
Mar 19	514	2.9	3.5	678	3.1	3.8	530	2.3	2.5
Apr 19	518	3.6	3.3	682	3.9	3.5	540	4.5	3.0
May 19	521	4.1	3.5	689	5.4	4.1	538	3.9	3.6
Jun 19	523	4.0	3.9	690 (r)	5.0	4.8	537	3.4	3.9
Jul 19 (r)	525	4.0	4.0	691	4.0	4.8	542	3.8	3.7
Aug 19 (p)	526	3.7	3.9	695	4.7	4.5	541	3.3	3.5

	Manufacturing, SIC 2007 section C (8%) ²			Construction, SIC 2007 section F (5%) ²			Wholesaling, retailing, hotels & restaurants, SIC 2007 sections G & I (23%) ²		
	Weekly Earnings (£)	% changes year on year		Weekly Earnings (£)	% changes year on year		Weekly Earnings (£)	% changes year on year	
		Single month	3 month average ³		Single month	3 month average ³		Single month	3 month average ³
	K5CA	K5CB	K5CC	K5CD	K5CE	K5CF	K5CG	K5CH	K5CI
Aug 17	589	1.8	1.6	595	2.5	1.6	342	1.5	1.4
Jun 18 (r)	598	2.2	2.6	615	5.0	5.2	349	2.2	3.0
Jul 18 (r)	602	2.3	2.3	608	3.0	4.4	354	4.2	3.7
Aug 18 (r)	600	1.8	2.1	621	4.4	4.1	356	3.9	3.4
Sep 18	603	2.1	2.1	621	2.8	3.4	355	2.4	3.5
Oct 18	605	1.8	1.9	625	3.2	3.4	360	4.2	3.5 (r)
Nov 18	605	1.5	1.8	626	4.3	3.4	357	1.9	2.8
Dec 18	606	1.7	1.7	636	5.5	4.3	357	2.6	2.9
Jan 19	609	2.2	1.8	629	3.8	4.5	356	2.9	2.5
Feb 19	607	1.9	1.9	635	5.3	4.8	357	2.4	2.6
Mar 19	605	0.9	1.7	632	3.1	4.1	349	-0.7	1.5
Apr 19	615	2.4	1.8	651	6.5	5.0	357	1.9	1.2
May 19	613	2.5	1.9	648	6.2	5.3	363	1.5	0.9
Jun 19	615	2.8	2.6	649	5.4	6.1	363	3.9	2.4
Jul 19 (r)	615	2.2	2.5	652	7.3	6.3	364	2.9	2.7
Aug 19 (p)	619	3.1	2.7	649	4.5	5.7	366	2.9	3.2

Source: Monthly Wages & Salaries Survey

Earnings enquiries: 01633 456120

Email: earnings@ons.gov.uk

1. Estimates of total pay include bonuses but exclude arrears of pay.

2. The figure in brackets is the percentage of whole economy employment in that sector or industry for the latest time period.

3. The three month average figures are the changes in the average seasonally adjusted values for the three months ending with the relevant month compared with the same period a year earlier.

EARNINGS

14 Average Weekly Earnings (nominal) - bonus pay

Standard Industrial Classification (2007)

Great Britain, seasonally adjusted

Whole Economy (100%) ¹				Private sector (82%) ²			Public sector (18%) ²		
Weekly Earnings (£)	% changes year on year		Weekly Earnings (£)	% changes year on year		Weekly Earnings (£)	% changes year on year		
	Single month	3 month average ²		Single month	3 month average ²		Single month	3 month average ²	
KAF4	KAF5	KAF6	KAF7	KAF8	KAF9	KAG2	KAG3	KAG4	
Aug 17	32	5.6	5.2	38	6.3	5.3	2	-9.0	-5.9
Jun 18 (r)	32	-6.0	-1.8	39	-9.2	-2.8	2	-4.5	-9.6
Jul 18 (r)	32	2.0	-1.8	38	2.2	-2.8	2	4.2	-6.9
Aug 18 (r)	32	1.9	-0.8	39	2.0	-2.0	3	11.7	4.0
Sep 18	34	-5.3	-0.7 (r)	40	-5.3	-0.5 (r)	1	-48.7	-11.0 (r)
Oct 18	38	21.7	5.5 (r)	45	21.8	5.6 (r)	2	4.3	-10.5 (r)
Nov 18	33	0.1	4.9	39	0.9	5.2	2	-49.7	-34.8
Dec 18	33	1.9	7.7	39	2.4	8.2	2	-31.5	-30.3
Jan 19	33	8.1	3.2	40	8.1	3.8	4	104.3	-10.6
Feb 19	32	4.7	4.8	38	4.8	5.1	2	15.3	24.7
Mar 19	32	-0.4	4.1	38	-0.9	3.9	3	113.6	70.8
Apr 19	32	1.4	1.9	38	1.1	1.6	2	10.2	35.2
May 19	33	8.5	3.1	40	8.0	2.7	3	23.4	38.2
Jun 19 (r)	32	2.1	3.9	39	0.1	3.0	3	28.2	20.3
Jul 19 (r)	34	5.9	5.4	40	4.1	4.0	4	62.2	38.6
Aug 19 (p)	32	0.7	2.9	39	0.3	1.5	3	6.4	31.0

Services, SIC 2007 sections G-S (85%) ¹				Finance and business services, SIC 2007 sections K-N (22%) ²			Public sector excluding financial services (17%) ²		
Weekly Earnings (£)	% changes year on year		Weekly Earnings (£)	% changes year on year		Weekly Earnings (£)	% changes year on year		
	Single month	3 month average ²		Single month	3 month average ²		Single month	3 month average ²	
K5CS	K5CT	K5CU	K5CV	K5CW	K5CX	KAH3	KAH4	KAH5	
Aug 17	33	6.3	5.9	80	11.3	6.2	2	-15.3	-13.5
Jun 18 (r)	32	-6.0	-1.6	77	-11.6	-6.4	1	-4.3	-9.0
Jul 18 (r)	33	4.4	-1.1	81	7.7	-5.9	2	14.5	-3.4
Aug 18 (r)	33	1.0	-0.3	78	-2.3	-2.5	2	5.0	5.0
Sep 18	34	-5.6	-0.3 (r)	82	-16.1	-4.7 (r)	1	-46.3	-8.6 (r)
Oct 18	40	26.4	6.7 (r)	95	24.4	0.4 (r)	2	3.4	-11.4 (r)
Nov 18	34	1.4	6.8	87	16.5	6.1	1	-49.4	-34.2
Dec 18	34	0.4	9.1	78	-2.5	12.5	1	-22.4	-28.3
Jan 19	34	9.4	3.6	81	8.0	7.1	2	111.4	-9.0
Feb 19	33	4.7	4.7	76	2.2	2.4	2	52.6	41.3
Mar 19	32	0.3	4.7	77	1.4	3.9	2	125.2	93.7
Apr 19	32	-1.2	1.2	78	1.2	1.6	2	12.7	58.4
May 19	34	7.8	2.2	83	20.9	7.4	2	26.7	49.4
Jun 19 (r)	33	3.1	3.2	79	2.7	7.8	1	-16.4	7.9
Jul 19 (r)	34	4.2	5.0	81	-0.5	7.1	2	52.7	22.9
Aug 19 (p)	33	1.5	2.9	81	3.9	2.0	2	10.9	17.3

Manufacturing, SIC 2007 section C (8%) ²				Construction, SIC 2007 section F (5%) ¹			Wholesaling, retailing, hotels & restaurants, SIC 2007 sections G & I (23%) ²		
Weekly Earnings (£)	% changes year on year		Weekly Earnings (£)	% changes year on year		Weekly Earnings (£)	% changes year on year		
	Single month	3 month average ²		Single month	3 month average ²		Single month	3 month average ²	
K5D3	K5D4	K5D5	K5D6	K5D7	K5D8	K5D9	K5DA	K5DB	
Aug 17	25	0.3	10.7	27	10.2	-9.2	23	9.4	2.3
Jun 18 (r)	24	-2.6	4.2	23	-8.9	-10.9	20	-12.1	3.5
Jul 18 (r)	26	-7.2	-0.4	20	-21.6	-15.0	22	-1.6	3.0
Aug 18 (r)	24	-6.9	-5.7	36	33.3	1.4	21	-9.0	-7.7
Sep 18	25	-3.2	-5.8 (r)	30	0.0	4.0 (r)	21	-9.8	-6.9 (r)
Oct 18	26	-9.3	-6.6 (r)	34	6.3	12.2 (r)	25	9.2	-3.3 (r)
Nov 18	24	-16.8	-10.0	27	-7.5	-0.2	22	-15.6	-5.9
Dec 18	26	4.0	-7.9	29	37.5	9.5	22	-3.4	-3.8
Jan 19	25	1.5	-4.3	26	0.0	7.6	22	-0.2	-6.9
Feb 19	23	-9.6	-1.4	30	20.3	18.1	22	0.0	-1.2
Mar 19	24	-6.9	-5.1	28	-2.6	5.3	19	-21.7	-7.8
Apr 19	27	3.2	-4.4	38	61.8	24.2	21	-11.0	-11.2
May 19	26	-3.7	-2.5	31	30.4	27.4	25	-13.4	-15.3
Jun 19 (r)	27	12.5	3.7	27	14.8	35.6	22	13.4	-5.2
Jul 19 (r)	26	-1.7	2.1	29	45.9	29.6	21	-4.4	-3.0
Aug 19 (p)	27	15.8	8.5	23	-36.4	-0.3	22	1.5	3.3

Source: Monthly Wages & Salaries Survey

Earnings enquiries: 01633 456120

Email: earnings@ons.gov.uk

1. The figure in brackets is the percentage of whole economy employment in that sector or industry for the latest time period.

2. The three month average figures are the changes in the average seasonally adjusted values for the three months ending with the relevant month compared with the same period a year earlier.

EARNINGS

15 Average Weekly Earnings (nominal) - regular pay¹

Standard Industrial Classification (2007)

Great Britain, seasonally adjusted

Whole Economy (100%) ²				Private sector (82%) ²				Public sector (18%) ²			
	Weekly Earnings (£)	% changes year on year		Weekly Earnings (£)	% changes year on year		Weekly Earnings (£)	% changes year on year			
		Single month	3 month average ³		Single month	3 month average ³		Single month	3 month average ³		
	KAI7	KAI8	KAI9	KAJ2	KAJ3	KAJ4	KAJ5	KAJ6	KAJ7		
Aug 17	475	2.3	2.1	467	2.5	2.3	512	1.7	1.5		
Jun 18	(r) 486	2.8	2.7	479	2.9	2.8	522	2.5	2.2		
Jul 18	(r) 489	3.2	2.9	481	3.3	3.0	525	2.8	2.4		
Aug 18	(r) 490	3.2	3.0	483	3.3	3.2	525	2.6	2.6		
Sep 18	491	3.1	3.2	484	3.2	3.3	526	2.8	2.8		
Oct 18	494	3.5	3.3	487	3.7	3.4	528	2.7	2.7		
Nov 18	495	3.5	3.4	487	3.5	3.5	530	3.1	2.9		
Dec 18	496	3.4	3.4	488	3.4	3.5	530	2.9	2.9		
Jan 19	498	3.7	3.5	491	3.9	3.6	531	2.7	2.9		
Feb 19	497	3.2	3.4	490	3.5	3.6	530	2.2	2.6		
Mar 19	498	3.1	3.3	491	3.3	3.5	531	2.2	2.3		
Apr 19	503	4.0	3.4	494	3.9	3.6	542	4.5	3.0		
May 19	503	3.8	3.6	496	3.8	3.7	540	3.8	3.5		
Jun 19	506	4.0	3.9	498	4.1	4.0	540	3.4	3.9		
Jul 19	(r) 507	3.8	3.9	500	3.9	4.0	541	3.2	3.5		
Aug 19	(p) 509	3.8	3.8	502	3.9	4.0	542	3.2	3.3		

Services, SIC 2007 sections G-S (85%) ²				Finance and business services, SIC 2007 sections K-N (22%) ²				Public sector excluding financial services (17%) ²			
	Weekly Earnings (£)	% changes year on year		Weekly Earnings (£)	% changes year on year		Weekly Earnings (£)	% changes year on year			
		Single month	3 month average ³		Single month	3 month average ³		Single month	3 month average ³		
	K5DL	K5DM	K5DN	K5DO	K5DP	K5DQ	KAK6	KAK7	KAK8		
Aug 17	459	2.4	2.2	573	2.8	2.4	508	1.7	1.6		
Jun 18	469	2.6	2.6	582	2.2	2.3	518	2.6	2.2		
Jul 18	(r) 472	3.2	2.8	587	2.7	2.4	521	2.9	2.4		
Aug 18	(r) 474	3.4	3.1	586	2.3	2.4	522	2.6	2.7		
Sep 18	475	3.3	3.3	589	2.8	2.6	523	2.9	2.8		
Oct 18	478	3.7	3.5	593	3.5	2.9	525	2.7	2.7 (r)		
Nov 18	478	3.5	3.5	594	3.6	3.3	526	3.1	2.9		
Dec 18	479	3.6	3.6	596	3.9	3.7	526	2.9	2.9		
Jan 19	481	3.8	3.6	600	4.6	4.0	527	2.7	2.9		
Feb 19	480	3.2	3.5	600	3.3	3.9	527	2.2	2.6		
Mar 19	482	3.3	3.5	604	4.4	4.1	527	2.1	2.4		
Apr 19	486	4.0	3.5	604	4.2	4.0	538	4.6	3.0		
May 19	487	3.9	3.7	606	4.3	4.3	536	3.8	3.5		
Jun 19	489	4.2	4.0	612	5.2	4.6	536	3.5	4.0		
Jul 19	(r) 490	3.8	4.0	611	4.2	4.6	538	3.3	3.5		
Aug 19	(p) 492	3.8	3.9	614	4.8	4.8	539	3.3	3.4		

Manufacturing, SIC 2007 section C (8%) ²				Construction, SIC 2007 section F (5%) ²				Wholesaling, retailing, hotels & restaurants, SIC 2007 sections G & I (23%) ²			
	Weekly Earnings (£)	% changes year on year		Weekly Earnings (£)	% changes year on year		Weekly Earnings (£)	% changes year on year			
		Single month	3 month average ³		Single month	3 month average ³		Single month	3 month average ³		
	K5DU	K5DV	K5DW	K5DX	K5DY	K5DZ	K5E2	K5E3	K5E4		
Aug 17	564	1.9	1.3	568	2.2	2.1	320	1.2	1.4		
Jun 18	(r) 574	2.4	2.4	591	5.5	5.5	330	3.0	2.8		
Jul 18	(r) 575	2.8	2.5	588	4.3	5.1	332	4.4	3.5		
Aug 18	(r) 576	2.0	2.4	590	3.9	4.6	334	4.5	4.0		
Sep 18	578	2.2	2.3	590	2.9	3.7	333	3.0	4.0 (r)		
Oct 18	579	2.1	2.1	591	3.0	3.3	335	3.8	3.8 (r)		
Nov 18	580	2.0	2.1	599	4.8	3.6	334	3.1	3.3		
Dec 18	580	1.6	1.9	603	3.8	3.9	335	3.0	3.3		
Jan 19	584	2.2	1.9	602	3.9	4.2	334	3.1	3.1		
Feb 19	585	2.2	2.0	605	4.9	4.2	334	2.5	2.9		
Mar 19	585	2.2	2.2	604	3.2	4.0	333	2.0	2.5		
Apr 19	586	2.3	2.3	616	5.2	4.4	337	3.0	2.5		
May 19	587	2.6	2.4	620	5.2	4.5	339	3.0	2.6		
Jun 19	587	2.3	2.4	622 (r)	5.2	5.2	341	3.4	3.1		
Jul 19	(r) 589	2.4	2.5	622	5.8	5.4	343	3.3	3.2		
Aug 19	(p) 592	2.9	2.5	625	5.9	5.6	344	3.0	3.2		

Source: Monthly Wages & Salaries Survey

Earnings enquiries: 01633 456120

Email: earnings@ons.gov.uk

1. Estimates of regular pay exclude bonuses and arrears of pay.

2. The figure in brackets is the percentage of whole economy employment in that sector or industry for the latest time period.

3. The three month average figures are the changes in the average seasonally adjusted values for the three months ending with the relevant month compared with the same period a year earlier.

EARNINGS

16 Average Weekly Earnings - real and nominal¹

Great Britain whole economy, seasonally adjusted

Total pay (including bonuses) ¹						
	Nominal earnings			Real earnings ³		
	Nominal Weekly Earnings (£)	% changes year on year		Weekly Earnings at constant 2015 prices (£)	% changes year on year	
		Single month	3 month average ²		Single month	3 month average ²
	KAB9	KAC2	KAC3	A3WX	A3WV	A3WW
Aug 17	506	2.4	2.3	488	-0.4	-0.3
Jun 18 (r)	519	2.0	2.4	490	-0.1	0.1
Jul 18 (r)	520	3.2	2.6	492	0.9	0.3
Aug 18	523 (r)	3.2	2.8	492	0.8	0.5
Sep 18	524	2.9	3.1	493	0.6	0.8
Oct 18	527	4.0	3.4 (r)	497	1.9	1.1
Nov 18	527	3.4	3.4	495	1.2	1.3
Dec 18	528	3.3	3.5	496	1.3	1.5
Jan 19	530	3.9	3.5	497	2.1	1.5
Feb 19	529	3.4	3.5	495	1.5	1.6
Mar 19	530	2.8	3.3	495	0.7	1.4
Apr 19	534	3.6	3.3	497	1.6	1.3
May 19	537	4.0	3.5	499	2.1	1.5
Jun 19	539	3.9	3.8	499 (r)	1.9	1.9
Jul 19 (r)	541	3.9	3.9	501	2.0	2.0
Aug 19 (p)	542	3.6	3.8	502	1.9	1.9
Regular pay (excluding bonuses)						
	Nominal earnings			Real earnings ³		
	Nominal Weekly Earnings (£)	% changes year on year		Weekly Earnings at constant 2015 prices (£)	% changes year on year	
		Single month	3 month average ²		Single month	3 month average ²
	KAI7	KAI8	KAI9	A2FC	A2F9	A2FA
Aug 17	475	2.3	2.1	458	-0.4	-0.4
Jun 18	486	2.8 (r)	2.7	460	0.4	0.3
Jul 18 (r)	489	3.2	2.9	462	0.8	0.5
Aug 18 (r)	490	3.2	3.0	462	0.8	0.7
Sep 18	491	3.1	3.2	463	0.9	0.8
Oct 18	494	3.5	3.3	464	1.3	1.0
Nov 18	495	3.5	3.4	464	1.3	1.2
Dec 18	496	3.4	3.4	465	1.3	1.3
Jan 19	498	3.7	3.5	467	1.9	1.5
Feb 19	497	3.2	3.4	466	1.4	1.5
Mar 19	498	3.1	3.3	466	1.2	1.5
Apr 19	503	4.0	3.4	468	2.0	1.5
May 19	503	3.8	3.6	468	1.9	1.7
Jun 19	506	4.0	3.9	470	2.1	2.0
Jul 19 (r)	507	3.8	3.9	470	1.8	1.9
Aug 19 (p)	509	3.8	3.8	472	2.0	2.0

Source: Monthly Wages & Salaries Survey

Earnings enquiries: 01633 456120

Email: earnings@ons.gov.uk

1. Estimates of total pay include bonuses but exclude arrears of pay.

2. The three month average figures are the changes in the average seasonally adjusted values for the three months ending with the relevant month compared with the same period a year earlier.

3. Estimates of real earnings are calculated by deflating the nominal earnings estimates by the Consumer Prices Index including owner occupiers' housing costs (CPIH), our preferred measure of consumer price inflation.

17 International comparisons of employment and unemployment

Employment rates as published by EUROSTAT: (not seasonally adjusted)					Unemployment rates as published by EUROSTAT on 30 September 2019 (seasonally adjusted)					
		Latest period	Employment rate (%) ^{1 2}	Change on year %			Latest Period	Unemployment rate (%) ³	Change on month %	Change on year %
European Union (EU)					European Union (EU)					
Austria	YXSN	Apr-Jun 19	73.4	0.4	Austria	ZXDS	Aug 19	4.5	0.1	-0.4
Belgium	YXSO	Apr-Jun 19	65.6	1.9	Belgium	ZXDI	Aug 19	5.5	0.0	-0.2
Bulgaria	A495	Apr-Jun 19	70.7	2.8	Bulgaria	A492	Aug 19	4.0	0.0	-1.2
Croatia	GUMI	Apr-Jun 19	61.8	0.7	Croatia	GUMJ	Aug 19	6.9	-0.1	-1.2
Cyprus	A4AC	Apr-Jun 19	71.2	1.8	Cyprus	A4AN	Aug 19	6.8	-0.2	-1.4
Czech Republic	A4AD	Apr-Jun 19	75.0	0.3	Czech Republic	A4AO	Aug 19	2.0	-0.1	-0.3
Denmark	YXSP	Apr-Jun 19	75.0	-0.7	Denmark	ZXDJ	Aug 19	5.0	0.1	0.1
Estonia	A4AE	Apr-Jun 19	74.8	0.0	Estonia	A4AP	Jul 19	4.2	-0.4	-0.9
Finland	YXSQ	Apr-Jun 19	73.7	0.7	Finland	ZXDU	Aug 19	6.8	0.1	-0.4
France	YXSR	Apr-Jun 19	65.7	0.2	France	ZXDN	Aug 19	8.5	0.0	-0.5
Germany	YXSS	Apr-Jun 19	76.5	1.1	Germany	ZXDK	Aug 19	3.1	0.0	-0.3
Greece	YXST	Apr-Jun 19	57.1	1.8	Greece	ZXDL	Jun 19	17.0	-0.1	-2.2
Hungary	A4AF	Apr-Jun 19	70.0	0.7	Hungary	A4AQ	Jul 19	3.4	-0.1	-0.3
Ireland	YXSU	Apr-Jun 19	69.1	0.6	Ireland	ZXDO	Sep 19	5.3	0.0	-0.3
Italy	YXSV	Apr-Jun 19	59.4	0.3	Italy	ZXDP	Aug 19	9.5	-0.3	-0.7
Latvia	A4AG	Apr-Jun 19	72.0	0.3	Latvia	A4AR	Aug 19	6.4	-0.1	-0.7
Lithuania	A4AH	Apr-Jun 19	73.0	0.9	Lithuania	A4AS	Aug 19	6.6	0.2	0.5
Luxembourg	YXSW	Apr-Jun 19	68.3	2.1	Luxembourg	ZXDQ	Aug 19	5.7	0.0	0.0
Malta	A4AI	Apr-Jun 19	73.1	1.9	Malta	A4AT	Aug 19	3.3	-0.1	-0.3
Netherlands	YXSX	Apr-Jun 19	78.1	1.1	Netherlands	ZXDR	Aug 19	3.5	0.1	-0.4
Poland	A4AJ	Apr-Jun 19	68.2	0.5	Poland	A4AU	Aug 19	3.3	0.0	-0.5
Portugal	YXSY	Apr-Jun 19	70.4	0.6	Portugal	ZXDT	Aug 19	6.2	-0.2	-0.8
Romania	A494	Apr-Jun 19	66.4	0.9	Romania	A48Z	Aug 19	3.8	-0.1	-0.2
Slovak Republic	A4AK	Apr-Jun 19	68.1	1.0	Slovak Republic	A4AV	Aug 19	5.5	-0.1	-0.8
Slovenia	A4AL	Apr-Jun 19	72.5	1.4	Slovenia	A4AW	Aug 19	4.2	0.0	-1.0
Spain	YXSZ	Apr-Jun 19	63.5	1.0	Spain	ZXDM	Aug 19	13.8	-0.1	-1.2
Sweden	YXTA	Apr-Jun 19	77.6	-0.2	Sweden ⁵	ZXDV	Aug 19	7.4	0.2	1.0
United Kingdom (*)	ANZ6	Apr-Jun 19	75.0	0.5	United Kingdom (*)	ZXDW	Jun 19	3.8	0.0	-0.1
Total EU ⁴	A496	Apr-Jun 19	69.3	0.7	Total EU ⁴	A493	Aug 19	6.2	-0.1	-0.5
Eurozone ⁴	YXTC	Apr-Jun 19	68.0	0.7	Eurozone ⁴	ZXDH	Aug 19	7.4	-0.1	-0.6
Employment rates published by the OECD (seasonally adjusted)					Unemployment rates as published by national statistical offices (seasonally adjusted)					
Canada	A48O	Apr-Jun 19	74.5	0.8	Canada	ZXDZ	Sep 19	5.5	-0.2	-0.3
Japan	A48P	Apr-Jun 19	77.6	0.8	Japan	ZXDY	Jul 19	2.2	-0.1	-0.3
United States	A48Q	Jul-Sep 19	71.5	0.8	United States	ZXDX	Sep 19	3.5	-0.2	-0.2

Sources: EUROSTAT, OECD, national statistical offices.
Labour market statistics enquiries: labour.market@ons.gov.uk

(*) Note: The UK rates shown in this table are as published by EUROSTAT (the EUs statistical office). See Table 1 for the latest rates for the UK as published by ONS.

1. All employment rates shown in this table are for those aged from 15 to 64 except for the rate for the United States published by OECD which are for those aged from 16 to 64.
2. The employment rates for the EU are published by EUROSTAT and are not seasonally adjusted. EUROSTAT do not publish seasonally adjusted (SA) employment rates but SA rates for some EU countries are published by OECD. These OECD employment rates are available on our website at [dataset A10](#).
3. Unemployment rates published by EUROSTAT for most EU countries (but not for the UK), are calculated by extrapolating from the most recent LFS data using monthly registered unemployment data. A standard population basis (15-74) is used by EUROSTAT except for Spain, Italy and the UK (16-74). The unemployment rate for the US is based on those aged 16 and over, but the rates for Canada and Japan are for those aged 15 and over. All unemployment rates shown in this table are seasonally adjusted.
4. The "Total EU" series consist of all 28 EU countries. The Eurozone figures consist of the following EU countries: Austria, Belgium, Cyprus, Estonia, Finland, France, Germany, Greece, Ireland, Italy, Latvia, Lithuania, Luxembourg, Malta, Netherlands, Portugal, Slovak Republic, Slovenia and Spain.
5. The EU unemployment rates are as published on the EUROSTAT database. For Sweden the rates on the database differ from those shown in the EUROSTAT News Release published on 30 September 2019. This is because the figures for Sweden on the database are seasonally adjusted estimates but the figures for Sweden shown in the News Release are the trend component.

18 Labour disputes

United Kingdom, not seasonally adjusted

	Working days lost (thousands) ^{1,2}		Working days lost in the Public Sector (thousands) ^{1,2}		Working days lost in the Private Sector (thousands) ^{1,2}		Number of stoppages ³		Number of stoppages in the Public Sector		Number of stoppages in the Private Sector		Workers involved (thousands) ^{1,3}	
	1	2	3	4	5	6	7	8	9	10	11	12	13	14
	BBFW	F8XZ	F8Y2	BLUU	F8Y3	F8Y4	BLUT							
2017 August	50	1	49	12	3	9	3							
2018 August	4	0	4	11	2	9	2							
September	9	2	7	11	4	7	2							
October	16	9	7	16	5	11	9							
November	11	0	11	8	1	7	3							
December	5	1	5	7	2	5	1							
2019 January	11	1	11	10	2	8	6							
February	7	2	5	11	5	6	6							
March	9	1	8	14	6	8	5							
April	2	1	2	8	1	7	1							
May	10	1	10	14	2	12	5							
June	12	1	12	24	5	19	3							
July	11	4	7	24	9	15	7							
August (p)	7	1	6	10	2	8	2							
Cumulative totals 12 months to:														
Aug 18	267	20	247	75	23	52	36							
Aug 19 (p)	111	22	89	101	30	71	29							

Relationship between columns 1=2+3; 4=5+6

Data source: ONS Labour Disputes Survey
Labour disputes enquiries 01633 455400

1. Estimates of working days lost and workers involved are shown to the nearest thousand. Unrounded estimates of less than 500 therefore round to zero.
2. Due to rounding the working days lost for the public and private sectors may not add up to the total working days lost.
3. The latest 12 month cumulative totals for the figures in these columns will not necessarily equal the sum of the 12 months as some disputes continue for over one month. These disputes appear in each month's data, but only once in the total.

VACANCIES

19 Vacancies¹ by size of business

United Kingdom (thousands), seasonally adjusted

		All Vacancies	Number of employees				
			1-9	10-49	50-249	250-2499	2500+
			AP2Y	ALY5	ALY6	ALY7	ALY8
Levels							
Jul-Sept 2017		798	128	115	122	151	282
Jul-Sept 2018	(r)	847	128	124	121	175	300
Aug-Oct 2018		852	124	131	118	177	302
Sept-Nov 2018		851	122	129	118	181	302
Oct-Dec 2018		852	125	128	118	180	301
Nov-Jan 2019		861	132	129	117	182	301
Dec-Feb 2019		849	130	125	115	179	300
Jan-Mar 2019		846	124	125	116	183	298
Feb-Apr 2019		840	124	120	115	186	295
Mar-May 2019		835	129	116	111	185	293
Apr-Jun 2019	(r)	825	118	118	114	183	292
May-Jul 2019	(r)	819	115	119	113	182	291
Jun-Aug 2019	(r)	815	112	121	111	181	290
Jul-Sept 2019	(p)	813	120	121	104	178	290
Change on quarter	*	-11	3	4	-10	-5	-2
Change %	*	-1.4	2.1	3.1	-9.0	-2.7	-0.7
Change on year		-34	-7	-3	-17	3	-10
Change %		-4.0	-5.6	-2.2	-13.9	1.6	-3.3

1. Excludes Agriculture, Forestry and Fishing.

Source: ONS Vacancy Survey

Vacancy Survey enquiries: vacancy.survey@ons.gov.uk, 01633 456777

* Change on previous non-overlapping three month rolling average time period.

20 Vacancies¹ and Unemployment

United Kingdom (thousands), seasonally adjusted

				Number of unemployed people per vacancy
	All Vacancies ¹	Unemployment ²		
	AP2Y	MGSC		JPC5
Levels				
Jun-Aug 2017	791	1,452		1.8
Jun-Aug 2018	844	1,363		1.6
Sep-Nov 2018	851	1,370		1.6
Dec-Feb 2019	849	1,343		1.6
Mar-May 2019	835	1,292		1.5
Jun-Aug 2019	815	1,314	(r)	1.6
Change on quarter	-19	22		0.1
Change %	-2.3	1.7		
Change on year	-29	-49		0.0
Change %	-3.4	-3.6		

Source: ONS Vacancy Survey/ Labour Force Survey

Vacancy Survey enquiries: vacancy.survey@ons.gov.uk, 01633 456777

1. Excludes Agriculture, Forestry and Fishing.

2. Unemployment estimates are produced from the Labour Force Survey (LFS) and are always one period behind the ONS Vacancy Survey estimates. This table therefore shows estimates for the same periods as shown in table 1 (which shows LFS estimates).

VACANCIES

21 Vacancies by industry

Standard Industrial Classification (2007)

United Kingdom (thousands), seasonally adjusted

	All vacancies ¹	Mining & quarrying	Manufacturing	Electricity, gas, steam & air conditioning supply ²	Water supply, sewerage, waste & remediation activities	Construction	Wholesale & retail trade; repair of motor vehicles and motor cycles	Transport & storage	Accommodation & food service activities	Information & communication
SIC 2007 sections	B-S	B	C	D	E	F	G	H	I	J
	AP2Y	JP9H	JP9I	JP9J	JP9K	JP9L	JP9M	JP9N	JP9O	JP9P
Levels (thousands)										
Jul-Sept 2017	798	1	51	4	3	29	143	34	91	42
Jul-Sept 2018 (r)	847	1	62	3	4	26	138	42	92	48
Aug-Oct 2018	852	1	61	3	4	26	138	39	94	48
Sept-Nov 2018	851	1	61	3	4	26	139	40	92	50
Oct-Dec 2018	852	1	62	3	4	27	139	39	93	51
Nov-Jan 2019	861	1	64	3	4	29	138	43	91	53
Dec-Feb 2019	849	1	61	3	4	28	138	44	89	52
Jan-Mar 2019	846	1	61	3	4	28	138	43	92	50
Feb-Apr 2019	840	2	56	4	4	27	138	42	93	48
Mar-May 2019	835	2	57	4	4	27	136	42	93	47
Apr-Jun 2019 (r)	825	2	56	4	4	27	134	41	89	44
May-Jul 2019 (r)	819	2	54	4	4	25	135	39	90	43
Jun-Aug 2019 (r)	815	2	54	3	4	24	130	36	94	43
Jul-Sept 2019 (p)	813	2	53	3	3	25	132	32	95	44
Change on quarter *	-11	0	-3	-1	-1	-2	-2	-9	6	0
Change % *	-1.4	0.0	-5.2	-16.2	-25.0	-5.6	-1.5	-21.4	7.0	-0.7
Change on year	-34	1	-9	0	-1	-1	-6	-9	4	-4
Change %	-4.0	45.5	-15.0	-3.1	-19.5	-3.8	-4.2	-22.1	3.8	-7.9
	AP2Z	JPA2	JPA3	JPA4	JPA5	JPA6	JPA7	JPA8	JPA9	JPB2
Vacancies per 100 employee jobs										
Jul-Sept 2017	2.7	1.9	2.0	3.1	1.6	2.0	3.1	2.3	4.1	3.3
Jul-Sept 2018 (r)	2.8	2.2	2.5	2.3	1.9	1.7	3.0	2.9	4.1	3.5
Aug-Oct 2018	2.8	2.4	2.4	2.3	1.8	1.7	3.0	2.7	4.2	3.5
Sept-Nov 2018	2.8	2.6	2.4	2.3	1.8	1.8	3.0	2.8	4.1	3.7
Oct-Dec 2018	2.8	2.6	2.5	2.2	1.8	1.8	3.0	2.7	4.1	3.7
Nov-Jan 2019	2.9	2.6	2.6	2.2	1.9	1.9	3.0	3.0	4.0	3.8
Dec-Feb 2019	2.8	2.6	2.4	2.5	1.9	1.8	3.0	3.1	3.9	3.8
Jan-Mar 2019	2.8	2.8	2.4	2.5	1.9	1.8	3.0	3.0	4.1	3.6
Feb-Apr 2019	2.8	3.0	2.2	2.6	1.8	1.8	3.0	3.0	4.1	3.5
Mar-May 2019	2.8	3.2	2.3	2.5	1.9	1.8	2.9	2.9	4.1	3.4
Apr-Jun 2019 (r)	2.7	3.2	2.2	2.7	2.0	1.8	2.9	2.9	4.0	3.3
May-Jul 2019 (r)	2.7	3.2	2.1	2.5	2.0	1.7	2.9	2.7	4.0	3.2
Jun-Aug 2019 (r)	2.7	3.2	2.1	2.5	1.9	1.6	2.8	2.5	4.2	3.2
Jul-Sept 2019 (p)	2.7	3.2	2.1	2.2	1.5	1.7	2.9	2.3	4.2	3.2
Change on quarter *	0.0	0.0	-0.1	-0.4	-0.5	-0.1	0.0	-0.6	0.3	0.0
Change on year	-0.1	1.0	-0.4	-0.1	-0.4	-0.1	-0.1	-0.6	0.2	-0.3

	Financial & insurance activities	Real estate activities ²	Professional scientific & technical activities	Administrative & support service activities	Public admin & defence; compulsory social security	Education	Human health & social work activities	Arts, entertainment & recreation	Other service activities	Total services
SIC 2007 sections	K	L	M	N	O	P	Q	R	S	G-S
	JP9Q	JP9R	JP9S	JP9T	JP9U	JP9V	JP9W	JP9X	JP9Y	JP9Z
Levels (thousands)										
Jul-Sept 2017	40	10	69	54	17	51	121	17	21	709
Jul-Sept 2018 (r)	38	12	78	58	22	51	130	18	26	751
Aug-Oct 2018	38	11	82	58	24	49	131	20	26	756
Sept-Nov 2018	38	12	79	54	24	50	130	23	25	756
Oct-Dec 2018	38	13	77	52	23	51	131	23	25	754
Nov-Jan 2019	37	15	80	53	21	49	132	23	25	759
Dec-Feb 2019	36	14	81	50	20	50	132	22	25	751
Jan-Mar 2019	34	12	80	49	20	51	134	23	23	749
Feb-Apr 2019	34	11	79	51	21	52	135	22	21	747
Mar-May 2019	33	10	79	50	22	52	136	21	21	742
Apr-Jun 2019 (r)	34	12	78	50	22	53	137	20	19	733
May-Jul 2019 (r)	33	11	78	48	22	52	138	23	19	731
Jun-Aug 2019 (r)	33	11	78	52	22	51	138	23	19	729
Jul-Sept 2019 (p)	31	11	80	54	22	49	137	20	19	728
Change on quarter *	-2	-1	2	4	0	-3	0	0	0	-5
Change % *	-7.1	-7.6	2.3	7.2	0.0	-6.3	0.2	1.5	1.1	-0.7
Change on year	-6	-1	2	-4	0	-1	8	2	-7	-23
Change %	-17.0	-6.0	2.2	-7.1	0.0	-2.8	5.9	12.4	-25.7	-3.1
	JPB3	JPB4	JPB5	JPB6	JPB7	JPB8	JPB9	JPC2	JPC3	JPC4
Vacancies per 100 employee jobs										
Jul-Sept 2017	3.8	1.9	2.7	2.0	1.3	1.9	3.0	2.3	3.5	2.8
Jul-Sept 2018 (r)	3.6	2.3	3.1	2.2	1.7	1.9	3.2	2.3	4.3	2.9
Aug-Oct 2018	3.6	2.2	3.3	2.2	1.8	1.8	3.2	2.6	4.3	2.9
Sept-Nov 2018	3.6	2.4	3.1	2.1	1.8	1.9	3.2	3.0	4.2	2.9
Oct-Dec 2018	3.7	2.6	3.1	2.0	1.8	1.9	3.2	2.9	4.1	2.9
Nov-Jan 2019	3.6	2.9	3.2	2.0	1.6	1.8	3.3	3.0	4.2	2.9
Dec-Feb 2019	3.4	2.8	3.2	1.9	1.5	1.9	3.3	2.8	4.1	2.9
Jan-Mar 2019	3.2	2.3	3.2	1.9	1.6	1.9	3.3	3.0	3.9	2.9
Feb-Apr 2019	3.2	2.1	3.2	1.9	1.7	1.9	3.3	2.8	3.5	2.9
Mar-May 2019	3.2	2.0	3.2	1.9	1.7	1.9	3.4	2.7	3.4	2.9
Apr-Jun 2019 (r)	3.2	2.3	3.1	1.9	1.7	2.0	3.4	2.6	3.2	2.8
May-Jul 2019 (r)	3.2	2.1	3.1	1.8	1.7	2.0	3.4	2.9	3.1	2.8
Jun-Aug 2019 (r)	3.1	2.1	3.1	2.0	1.7	1.9	3.4	2.9	3.2	2.8
Jul-Sept 2019 (p)	3.0	2.2	3.2	2.0	1.7	1.8	3.4	2.6	3.2	2.8
Change on quarter *	-0.2	-0.2	0.1	0.1	0.0	-0.1	0.0	0.0	0.0	0.0
Change on year	-0.6	-0.1	0.1	-0.2	0.0	-0.1	0.2	0.3	-1.1	-0.1

1. Excludes Agriculture, Forestry and Fishing.

Source: ONS Vacancy Survey

2. Not seasonally adjusted. These series do not display seasonality. Therefore the unadjusted series is the best estimate of a 'seasonally adjusted' series.

* Change on previous non-overlapping three month rolling average time period.

Vacancy Survey enquiries: vacancy.survey@ons.gov.uk, 01633 456777

REDUNDANCIES

22 Redundancies: level and rates ¹

United Kingdom (seasonally adjusted)

	People (aged 16 and over)		Men (aged 16 and over)		Women (aged 16 and over)	
	Level (000s)	Rate ¹	Level (000s)	Rate ¹	Level (000s)	Rate ¹
	BEAO	BEIR	BEIU	BEIX	BEJA	BEJD
Jun-Aug 2017	107	4.0	62	4.5	45	3.4
Jun-Aug 2018	90	3.3	49	3.5	40	3.0
Sep-Nov 2018	91	3.3	46	3.3	45	3.4
Dec-Feb 2019	88	3.2	56	4.0	32	2.4
Mar-May 2019	101	3.6	55	4.0	45	3.3
Jun-Aug 2019	115	4.1	58	4.2	56	4.1
change on quarter	14	0.5	3	0.2	11	0.8
change %	13.9		5.3		24.3	
change on year	25	0.9	9	0.6	16	1.1
change %	27.9		18.2		39.7	

Data source: Labour Force Survey

Labour market statistics enquiries: labour.market@ons.gov.uk

1. The redundancy rate is the ratio of the redundancy level for the given quarter to the seasonally adjusted number of employees in the previous quarter, multiplied by 1,000.

REGIONAL SUMMARY

23(1) Regional summary of labour market headline indicators

Thousands, seasonally adjusted

Headline estimates for June to August 2019

Area Codes	Area Names	Economically active ¹		Employment		Unemployment		Economically inactive	
		Aged 16+	Aged 16-64	Aged 16+	Aged 16-64	Aged 16+	Aged 16+	Aged 16-64	Aged 16-64
		Level	Rate (%) ²	Level	Rate (%) ²	Level	Rate (%) ³	Level	Rate (%) ²
K02000001	United Kingdom	34,006	79.0	32,693	75.9	1,314	3.9	8,676	21.0
K03000001	Great Britain	33,118	79.2	31,830	76.0	1,288	3.9	8,368	20.8
E92000001	England	28,833	79.4	27,721	76.3	1,112	3.9	7,165	20.6
E12000001	North East	1,282	75.8	1,208	71.2	74	5.8	396	24.2
E12000002	North West	3,618	77.8	3,469	74.5	148	4.1	998	22.2
E12000003	Yorkshire and The Humber	2,698	77.2	2,589	74.0	108	4.0	770	22.8
E12000004	East Midlands	2,472	80.4	2,360	76.6	111	4.5	576	19.6
E12000005	West Midlands	2,940	77.9	2,823	74.8	117	4.0	799	22.1
E12000006	East	3,226	81.4	3,117	78.6	109	3.4	700	18.6
E12000007	London	4,867	77.8	4,642	74.2	225	4.6	1,348	22.2
E12000008	South East	4,810	81.9	4,661	79.2	149	3.1	1,012	18.1
E12000009	South West	2,921	83.0	2,851	81.0	70	2.4	565	17.0
W92000004	Wales	1,537	77.5	1,473	74.1	64	4.2	430	22.5
S92000003	Scotland	2,748	77.5	2,636	74.3	112	4.1	773	22.5
N92000002	Northern Ireland	889	73.6	863	71.5	26	2.9	308	26.4

Change on quarter (change since March to May 2019)

Note: Changes on quarter at regional level are particularly subject to sampling variability and should be interpreted in the context of changes over several quarters rather than in isolation.

Area Codes	Area Names	Economically active ¹		Employment		Unemployment		Economically inactive	
		Aged 16+	Aged 16-64	Aged 16+	Aged 16-64	Aged 16+	Aged 16+	Aged 16-64	Aged 16-64
		Level	Rate (%) ²	Level	Rate (%) ²	Level	Rate (%) ³	Level	Rate (%) ²
K02000001	United Kingdom	-35	-0.1	-56	-0.2	22	0.1	57	0.1
K03000001	Great Britain	-25	-0.1	-48	-0.2	24	0.1	51	0.1
E92000001	England	42	0.0	43	0.0	-1	0.0	6	0.0
E12000001	North East	10	0.7	6	0.3	3	0.2	-12	-0.7
E12000002	North West	-5	-0.1	-4	-0.1	-2	0.0	5	0.1
E12000003	Yorkshire and The Humber	-14	-0.2	14	0.6	-28	-1.0	7	0.2
E12000004	East Midlands	11	0.2	4	-0.1	7	0.3	-5	-0.2
E12000005	West Midlands	12	0.0	35	0.8	-23	-0.8	-1	0.0
E12000006	East	11	0.2	-6	-0.3	17	0.5	-8	-0.2
E12000007	London	-28	-0.6	-44	-0.7	17	0.4	40	0.6
E12000008	South East	35	-0.1	21	-0.4	14	0.3	4	0.1
E12000009	South West	10	0.7	17	0.9	-7	-0.2	-23	-0.7
W92000004	Wales	-27	-0.9	-32	-1.1	5	0.4	17	0.9
S92000003	Scotland	-39	-0.8	-59	-1.4	20	0.8	29	0.8
N92000002	Northern Ireland	-10	-0.4	-8	-0.3	-2	-0.2	5	0.4

Change on year (change since June to August 2018)

Area Codes	Area Names	Economically active ¹		Employment		Unemployment		Economically inactive	
		Aged 16+	Aged 16-64	Aged 16+	Aged 16-64	Aged 16+	Aged 16+	Aged 16-64	Aged 16-64
		Level	Rate (%) ²	Level	Rate (%) ²	Level	Rate (%) ³	Level	Rate (%) ²
K02000001	United Kingdom	233	0.2	282	0.3	-49	-0.2	-63	-0.2
K03000001	Great Britain	224	0.2	263	0.3	-40	-0.1	-53	-0.2
E92000001	England	274	0.3	321	0.4	-47	-0.2	-86	-0.3
E12000001	North East	15	0.9	-4	-0.3	19	1.4	-16	-0.9
E12000002	North West	-13	-0.2	-6	-0.1	-7	-0.2	11	0.2
E12000003	Yorkshire and The Humber	-13	-0.4	-1	0.0	-12	-0.4	13	0.4
E12000004	East Midlands	89	2.1	84	1.9	5	0.0	-60	-2.1
E12000005	West Midlands	3	-0.4	31	0.3	-28	-1.0	17	0.4
E12000006	East	71	0.5	53	0.1	18	0.5	-18	-0.5
E12000007	London	-36	-0.8	-32	-0.7	-4	-0.1	56	0.8
E12000008	South East	99	0.7	128	1.2	-28	-0.7	-37	-0.7
E12000009	South West	59	1.6	68	1.9	-9	-0.4	-52	-1.6
W92000004	Wales	-27	-0.8	-30	-1.0	4	0.3	15	0.8
S92000003	Scotland	-24	-0.5	-27	-0.6	4	0.2	17	0.5
N92000002	Northern Ireland	9	0.9	19	1.7	-10	-1.1	-10	-0.9

The Labour Force Survey is tabulated by region of residence.

Source: Labour Force Survey

1. Economically active = Employment plus Unemployment.

Labour market statistics enquiries: labour.market@ons.gov.uk

2. Denominator = all persons aged 16 to 64.

3. Denominator = total economically active

REGIONAL SUMMARY

23(2) Regional summary of Workforce Jobs

Thousands,
seasonally adjusted

Area Codes	Area Names	June 2019	Change on March 2019
K02000001	United Kingdom	35,667	114
K03000001	Great Britain	34,745	97
E92000001	England	30,561	69
E12000001	North East	1,213	43
E12000002	North West	3,890	-13
E12000003	Yorkshire and The Humber	2,784	-8
E12000004	East Midlands	2,415	32
E12000005	West Midlands	2,988	27
E12000006	East	3,267	-2
E12000007	London	6,071	-35
E12000008	South East	4,935	23
E12000009	South West	2,998	2
W92000004	Wales	1,465	10
S92000003	Scotland	2,719	18
N92000002	Northern Ireland	913	16

Workforce jobs are mainly sourced from employer surveys and are tabulated by region of workplace.

HM Forces stationed abroad are included in the UK workforce jobs estimates but not in the regional estimates. The UK workforce jobs estimates therefore do not equal the sum of the regional estimates.