

Statistical bulletin

Labour market overview, UK: March 2020

Estimates of employment, unemployment, economic inactivity and other employment-related statistics for the UK.



Contact:
Debra Leaker
labour.market@ons.gov.uk
+44 (0)1633 455400

Release date:
17 March 2020

Next release:
21 April 2020

Table of contents

1. [Other pages in this release](#)
2. [Main points](#)
3. [Employment](#)
4. [Unemployment](#)
5. [Economic inactivity](#)
6. [Earnings growth](#)
7. [Vacancies](#)
8. [Labour market data](#)
9. [Glossary](#)
10. [Measuring the data](#)
11. [Strengths and limitations](#)
12. [Related links](#)

1 . Other pages in this release

Other commentary from the latest labour market data can be found on the following pages:

- [Employment in the UK](#)
- [Average weekly earnings in Great Britain](#)
- [Vacancies and jobs](#)

2 . Main points

- The UK employment rate in the three months to January 2020 was estimated at a joint record high of 76.5%, 0.4 percentage points higher than a year earlier and 0.3 percentage points up on the previous quarter.
- The UK unemployment rate in the three months to January 2020 was estimated at 3.9%, largely unchanged compared with a year earlier and 0.2 percentage points higher than the previous quarter.
- Estimated annual growth in average weekly earnings for employees in Great Britain in the three months to January 2020 was 3.1% for both total pay (including bonuses) and regular pay (excluding bonuses).
- In real terms (after adjusting for [inflation](#)), annual growth in both total pay and regular pay is estimated to be 1.5% in the three months to January 2020, down from a recent peak of 2.0% in the three months to June 2019.
- In real terms (after adjusting for inflation), annual growth in total pay is estimated to be 1.4% and annual growth in regular pay is estimated to be 1.8% in the three months to January 2020.
- There were an estimated 817,000 vacancies in the UK for December 2019 to February 2020; this is 19,000 more than the previous quarter but 30,000 fewer than a year earlier.

The data in this bulletin come from surveys of households and businesses. It is not possible to survey every household and business each month, so these statistics are estimates based on samples.

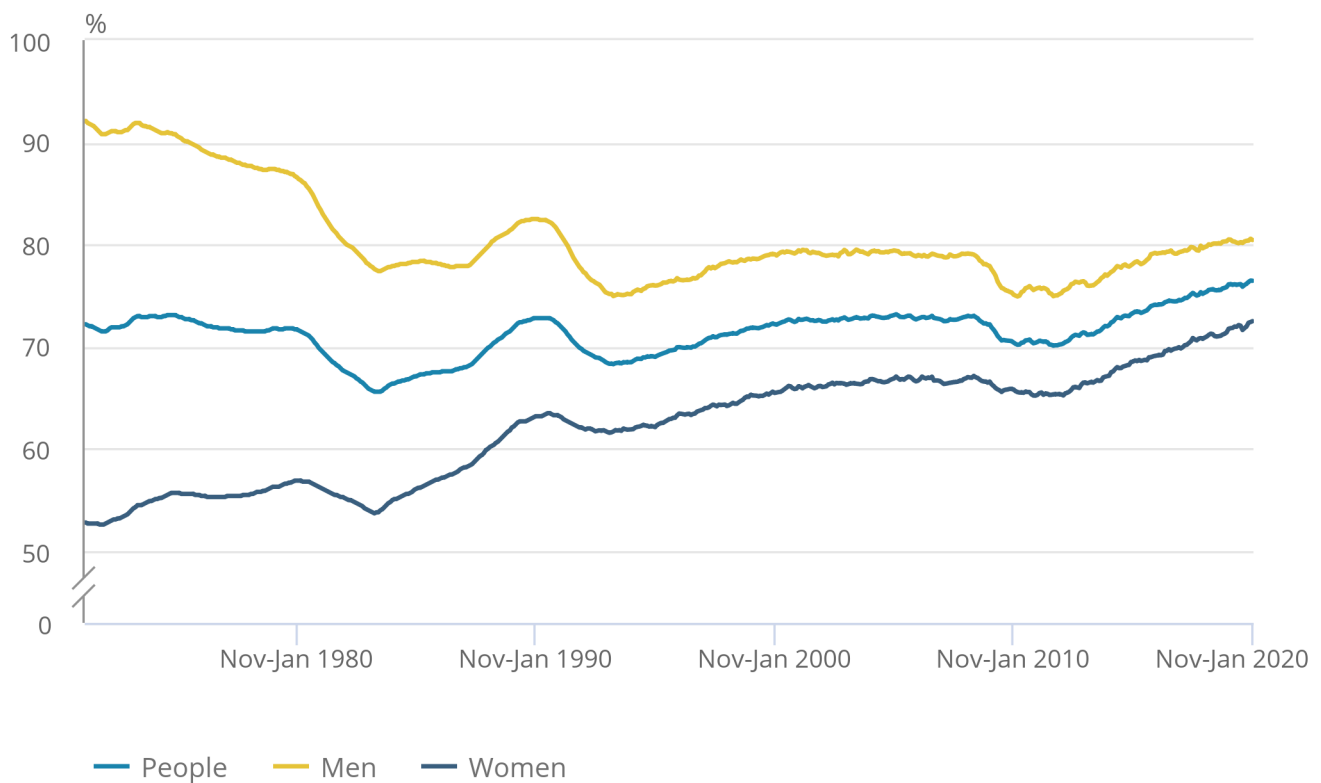
3 . Employment

Figure 1: The employment rate for all people increased by 0.4 percentage points on the year to a joint record high of 76.5%

UK employment rates (aged 16 to 64 years), seasonally adjusted, between January to March 1971 and November 2019 to January 2020

Figure 1: The employment rate for all people increased by 0.4 percentage points on the year to a joint record high of 76.5%

UK employment rates (aged 16 to 64 years), seasonally adjusted, between January to March 1971 and November 2019 to January 2020



Source: Office for National Statistics – Labour Force Survey

[Employment](#) measures the number of people aged 16 years and over in paid work. The employment rate is the proportion of people aged between 16 and 64 years who are in paid work.

Estimated employment rates for people aged between 16 and 64 years have generally been increasing since early 2012. Recent increases have largely been caused by increases in the employment rate for women (Figure 1). For November 2019 to January 2020:

- the estimated employment rate for people was at a joint record high of 76.5%; this is 0.4 percentage points up on the year and 0.3 percentage points up on the quarter
- the estimated employment rate for men was 80.4%; this is largely unchanged on the year and 0.1 percentage points up on the quarter
- the estimated employment rate for women was at a record high of 72.5%; this is 0.7 percentage points up on the year and 0.5 percentage points up on the quarter

The increase in the employment rate for women in recent years is partly a result of changes to the State Pension age for women, resulting in fewer women retiring between the ages of 60 and 65 years. However, since the equalisation of the State Pension age, the employment rate for women has continued to rise.

Estimates for November 2019 to January 2020 show a record 32.99 million people aged 16 years and over in employment; this is 271,000 more than a year earlier. This annual increase was mainly caused by full-time workers (up 345,000 on the year to a record high of 24.46 million), women in employment (up 262,000 to a record high of 15.66 million) and workers aged between 50 and 64 years (up 168,000 to 9.31 million). The annual increase in employment was partly offset by the largest decrease for part-time employees since August to October 2011 (down 127,000 on the year to 6.91 million).

There was a 184,000 increase in employment on the quarter. This was, again, mainly caused by full-time workers (up 225,000; this is the largest quarterly increase on record) and women in employment (up 171,000; this is the largest quarterly increase on record). The quarterly increase for women working full-time (up 179,000 to a record high of 9.35 million) was also the largest on record.

More information about employment can be found in the [Employment in the UK bulletin](#), published alongside this release.

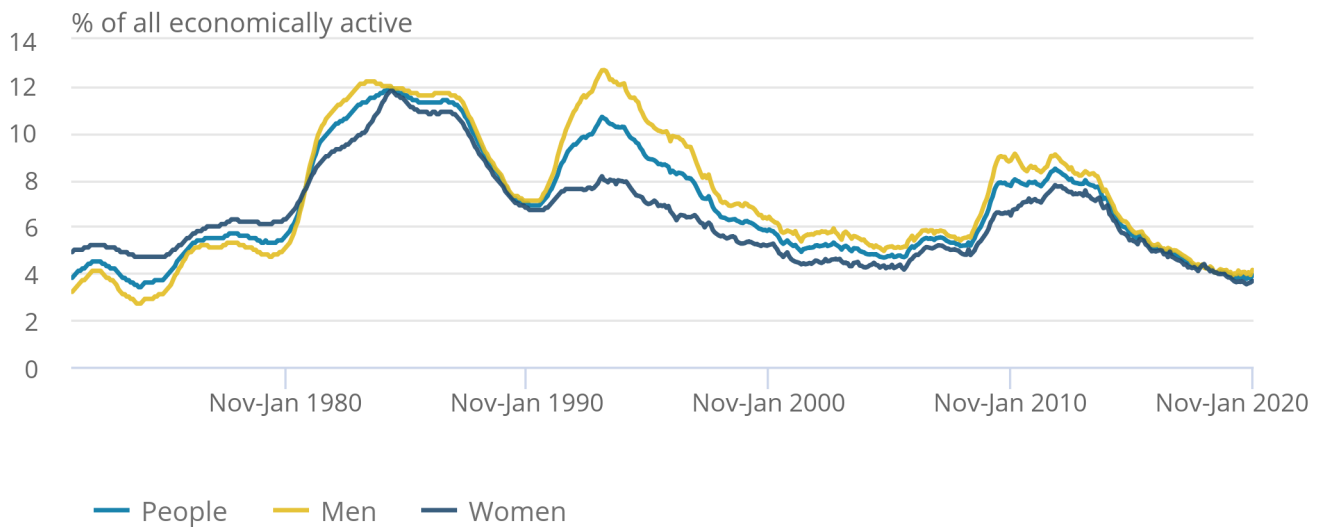
4 . Unemployment

Figure 2: Unemployment rates were at historically low levels

UK unemployment rates (aged 16 years and over), seasonally adjusted, between January to March 1971 and November 2019 to January 2020

Figure 2: Unemployment rates were at historically low levels

UK unemployment rates (aged 16 years and over), seasonally adjusted, between January to March 1971 and November 2019 to January 2020



Source: Office for National Statistics – Labour Force Survey

[Unemployment](#) measures people without a job who have been actively seeking work within the last four weeks and are available to start work within the next two weeks. The unemployment rate is not the proportion of the total population who are unemployed. It is the proportion of the economically active population (those in work plus those seeking and available to work) who are unemployed.

Estimated unemployment rates for both men and women aged 16 years and over have generally been falling since late 2013 but have levelled off in recent periods (Figure 2).

For November 2019 to January 2020:

- the estimated UK unemployment rate for all people was 3.9%; this is largely unchanged compared with a year earlier and 0.2 percentage points higher than the previous quarter
- the estimated UK unemployment rate for men was 4.1%; this is 0.1 percentage points higher than a year earlier and 0.2 percentage points higher than the previous quarter
- the estimated UK unemployment rate for women was 3.7%; this is down 0.2 percentage points on the year but up 0.1 percentage points on the quarter

For November 2019 to January 2020, an estimated 1.34 million people were unemployed. This is 5,000 more than a year earlier but 515,000 fewer than five years earlier. The small increase on the year is the first annual increase in unemployment since May to July 2012, and it was caused by a 20,000 increase for men.

More information about unemployment can be found in the [Employment in the UK bulletin](#), published alongside this release.

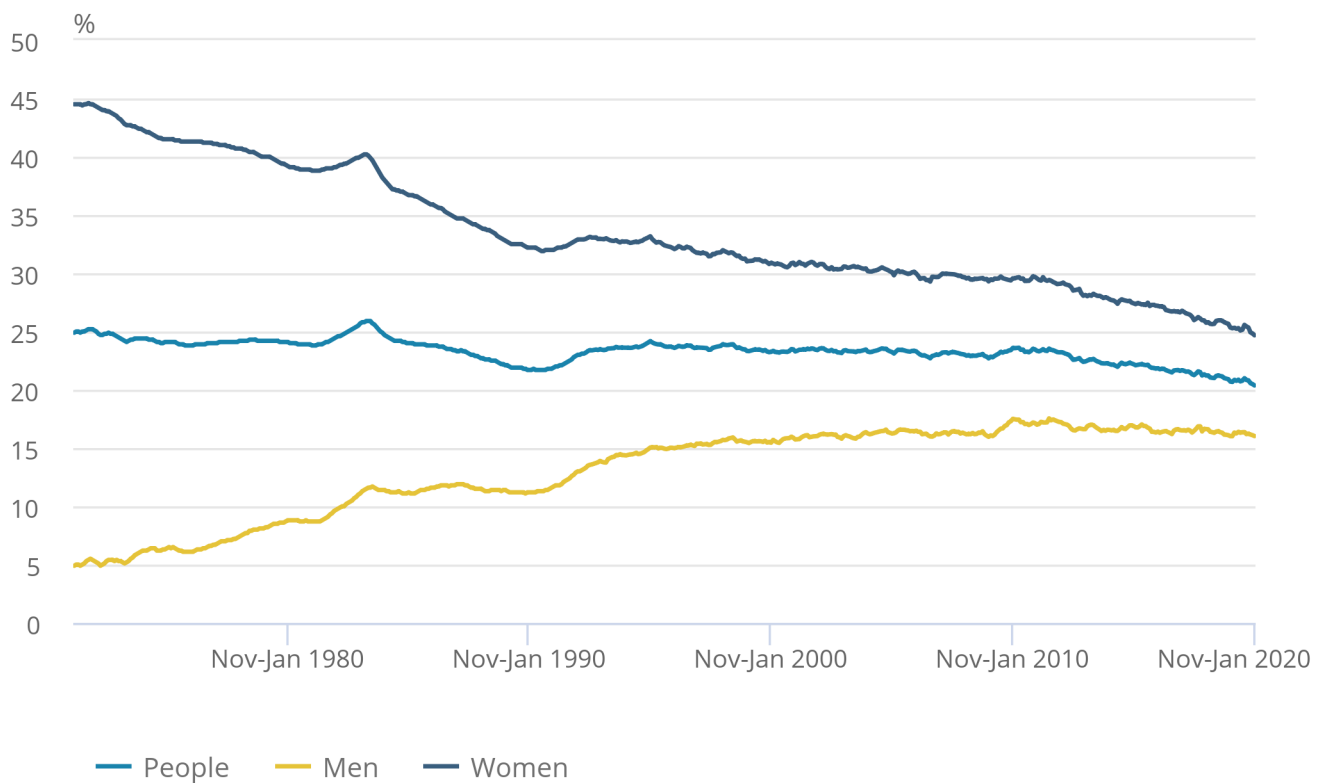
5 . Economic inactivity

Figure 3: The overall economic inactivity rate for people aged between 16 and 64 years was at a record low of 20.4%, down 0.3 percentage points on the year

UK economic inactivity rate (all people aged 16 to 64 years), seasonally adjusted, between January to March 1971 and November 2019 to January 2020

Figure 3: The overall economic inactivity rate for people aged between 16 and 64 years was at a record low of 20.4%, down 0.3 percentage points on the year

UK economic inactivity rate (all people aged 16 to 64 years), seasonally adjusted, between January to March 1971 and November 2019 to January 2020



Source: Office for National Statistics – Labour Force Survey

[Economic inactivity](#) measures people without a job but who are not classed as unemployed because they have not been actively seeking work within the last four weeks and/or they are unable to start work within the next two weeks. Our headline measure of economic inactivity is for those aged between 16 and 64 years.

Since comparable records began in 1971, the economic inactivity rate for all people aged between 16 and 64 years has generally been falling (although it increased during recessions). This is because of a gradual fall in the economic inactivity rate for women (as seen in Figure 3). Over recent years, the economic inactivity rate for men has been relatively flat.

For people aged between 16 and 64 years, for November 2019 to January 2020:

- the estimated economic inactivity rate for all people was at a record low of 20.4%; this is down 0.3 percentage points on the year and down 0.4 percentage points on the quarter
- the estimated economic inactivity rate for men was 16.0%; this is largely unchanged on the year but down 0.2 percentage points on the quarter
- the estimated economic inactivity rate for women was at a record low of 24.7%; this is down 0.7 percentage points both on the year and on the quarter

Estimates for November 2019 to January 2020 show 8.43 million people aged between 16 and 64 years not in the labour force (economically inactive). This was 118,000 fewer than a year earlier and 614,000 fewer than five years earlier. The annual decrease was caused by women, with the level down by 129,000 to reach a record low of 5.13 million.

More information about economic inactivity can be found in the [Employment in the UK bulletin](#), published alongside this release.

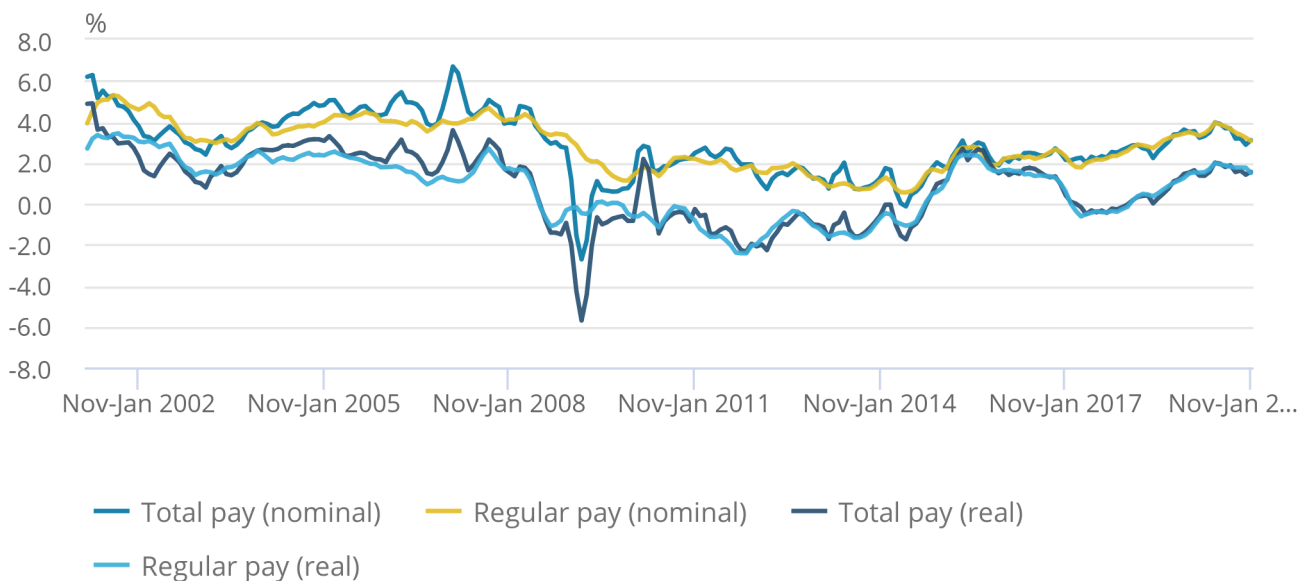
6 . Earnings growth

Figure 4: Pay growth for employees in both total pay (including bonuses) and regular pay (excluding bonuses) is estimated to be 3.1%, which translates to 1.5% in real terms

Great Britain average weekly earnings annual growth rates, seasonally adjusted, between January to March 2001 and November to January 2020

Figure 4: Pay growth for employees in both total pay (including bonuses) and regular pay (excluding bonuses) is estimated to be 3.1%, which translates to 1.5% in real terms

Great Britain average weekly earnings annual growth rates, seasonally adjusted, between January to March 2001 and November to January 2020



Source: Office for National Statistics – Monthly Wages and Salaries Survey

The earnings estimates are not just a measure of pay rises as they also reflect changes in the number of paid hours worked and changes in the structure of the workforce, for example, more high-paid jobs would have an upward effect on earnings growth rates.

The rate of pay growth trended upwards from spring 2017. In April to June 2019, it reached 4.0% for total pay and 3.9% for regular pay, the highest nominal pay growth rates since 2008. However, since then growth has slowed. In November 2019 to January 2020, it stood at 3.1% for both total pay and regular pay.

In real terms, annual pay growth has been positive since the three months to February 2018. This means that during that period, pay has been growing faster than [inflation](#). Growth in real terms for both total pay and regular pay reached a recent peak of 2.0% in the three months to June 2019. It has since dropped to 1.5% in the three months to January 2020.

More information about earnings growth can be found in the [Average weekly earnings in Great Britain bulletin](#), published alongside this release.

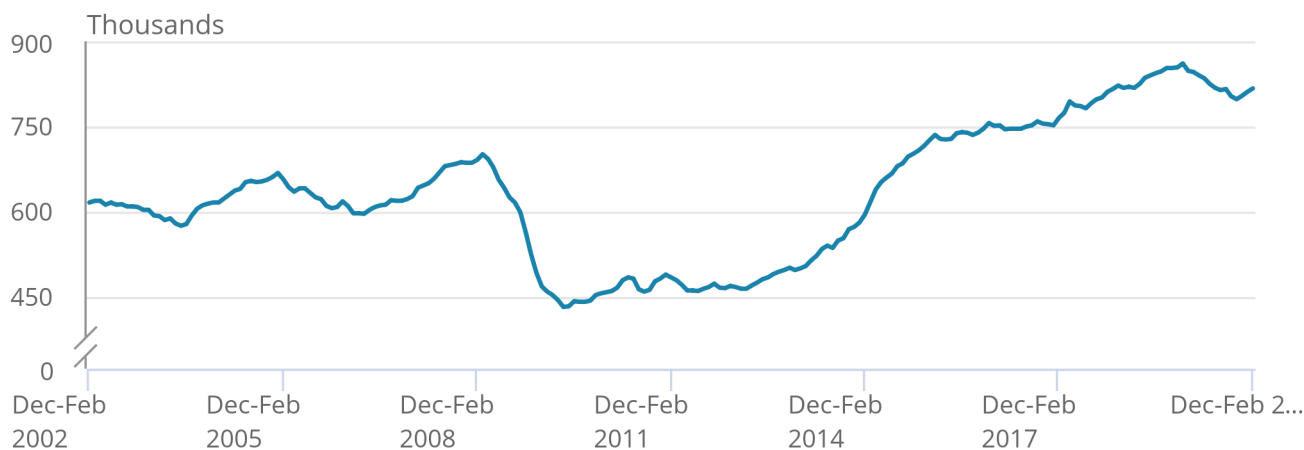
7 . Vacancies

Figure 5: December 2019 to February 2020 saw the second quarterly increase in vacancies, after 11 consecutive quarterly falls, but vacancies remain historically high

Number of vacancies in the UK, seasonally adjusted, between December 2001 to February 2002 and December 2019 to February 2020

Figure 5: December 2019 to February 2020 saw the second quarterly increase in vacancies, after 11 consecutive quarterly falls, but vacancies remain historically high

Number of vacancies in the UK, seasonally adjusted, between December 2001 to February 2002 and December 2019 to February 2020



Source: Office for National Statistics – Vacancy Survey

The estimated [number of vacancies](#) in the UK fell sharply during the recession of 2008 to 2009. Since 2012, it has generally increased, reaching a record high of 861,000 in November 2018 to January 2019. For December 2019 to February 2020, there were an estimated 817,000 vacancies in the UK; this is 19,000 more than for the previous quarter (September to November 2019) but 30,000 fewer than for the previous year.

More information about vacancies can be found in the [Vacancies and jobs in the UK bulletin](#), published alongside this release.

8 . Labour market data

[Summary of labour market statistics](#)

Dataset A01 | Released 17 March 2020

Estimates of employment, unemployment and other employment-related statistics for the UK.

[Employment, unemployment and economic inactivity](#)

Dataset A02 SA | Released 17 March 2020

Estimates of UK employment, unemployment and economic inactivity for people aged 16 years and over and people aged between 16 and 64 years based on the Labour Force Survey (LFS).

[Average weekly earnings](#)

Dataset EARN01 | Released 17 March 2020

Estimates of Great Britain earnings growth based on the Monthly Wages and Salaries Survey.

[Vacancies by industry](#)

Dataset VACS02 | Released 17 March 2020

Estimates of the number of UK job vacancies for each industry, based on a survey of businesses.

Table 1: Labour Force Survey sampling variability (95% confidence intervals)
 Sampling variability (95% confidence intervals) of UK Labour Force Survey estimates, November 2019 to January 2020

	Level	Sampling variability of level (*)	Change on quarter	Sampling variability of change on quarter (*)	Change on year	Sampling variability of change on year (*)
Employment (000s, aged 16 and over)	32,985	± 177	184	± 151	271	± 238
Employment rate (aged 16 to 64)	76.5%	± 0.4	0.3	± 0.3	0.4	± 0.5
Average weekly hours	31.9	± 0.2	-0.3	± 0.2	-0.2	± 0.3
Unemployment (000s, aged 16 and over)	1,343	± 69	63	± 75	5	± 97
Unemployment rate (aged 16 and over)	3.9%	± 0.2	0.2	± 0.2	0.0	± 0.3
Economically active (000s, aged 16 and over)	34,328	± 169	246	± 147	276	± 229
Economic activity rate (aged 16 to 64)	79.6%	± 0.4	0.4	± 0.3	0.3	± 0.5
Economically inactive (000s, aged 16 to 64)	8,431	± 154	-175	± 133	-118	± 208
Economic inactivity rate (aged 16 to 64)	20.4%	± 0.4	-0.4	± 0.3	-0.3	± 0.5
Redundancies (000s, aged 16 and over)	106	± 19	-12	± 28	15	± 26

Source: Office for National Statistics – Labour Force Survey

Notes

1. The sampling variability estimates are for 95% confidence intervals and are calculated on data that are not seasonally adjusted. [Back to table](#)
2. These data are part of data table A11: Labour Force Survey sampling variability, which is part of the Labour market overview, UK release. [Back to table](#)

Table 2: Summary of employee earnings, Great Britain, November 2019 to January 2020, seasonally adjusted

	Annual growth rate (estimate)	Sampling variability of growth rate (1)
Total pay (nominal)	3.1	± 0.5
Total pay (real)	1.5	
Regular pay (nominal)	3.1	± 0.5
Regular pay (real)	1.5	

Source: Office for National Statistics – Monthly Wages and Salaries Survey

Notes

1. The sampling variability estimates are for 95% confidence intervals (where we are 95% certain the true value lies within the specified range) and are calculated on not seasonally adjusted data for single month growth rates for the 12 months from January to December 2014. It is not possible to calculate confidence intervals for growth rates in real terms. [Back to table](#)

9 . Glossary

Average weekly earnings

[Average weekly earnings](#) measures money paid by employers to employees in Great Britain before tax and other deductions from pay. The estimates are not just a measure of pay rises as they also reflect, for example, changes in the overall structure of the workforce. More high-paid jobs in the economy would have an upward effect on the earnings growth rate.

Economic inactivity

People not in the labour force (also known as [economically inactive](#)) are not in employment but do not meet the internationally accepted definition of unemployment because they have not been seeking work within the last four weeks and/or they are unable to start work in the next two weeks. The economic inactivity rate is the proportion of people aged between 16 and 64 years who are not in the labour force.

Employment

[Employment](#) measures the number of people in paid work or who had a job that they were temporarily away from (for example, because they were on holiday or off sick). This differs from the number of jobs because some people have more than one job. The employment rate is the proportion of people aged between 16 and 64 years who are in employment. A more detailed explanation is available in our [Guide to labour market statistics](#).

Unemployment

[Unemployment](#) measures people without a job who have been actively seeking work within the last four weeks and are available to start work within the next two weeks. The unemployment rate is not the proportion of the total population who are unemployed. It is the proportion of the economically active population (those in work plus those seeking and available to work) who are unemployed.

Vacancies

[Vacancies](#) are defined as positions for which employers are actively seeking recruits from outside their business or organisation. The estimates are based on the Vacancy Survey – a survey of businesses designed to provide estimates of the stock of vacancies across the economy, excluding agriculture, forestry and fishing (a small sector for which the collection of estimates would not be practical).

A more detailed [Glossary](#) is available.

10 . Measuring the data

After EU withdrawal

As the UK leaves the EU, it is important that our statistics continue to be of high quality and are internationally comparable. During the transition period, those UK statistics that align with EU practice and rules will continue to do so in the same way as before 31 January 2020.

After the transition period, we will continue to produce our labour market statistics in line with the UK Statistics Authority's [Code of Practice for Statistics](#) and in accordance with International Labour Organization (ILO) definitions and agreed international statistical guidance.

The employment, unemployment and economic inactivity estimates rely on data collected from the Labour Force Survey (LFS), a survey run by field interviewers with people across the UK every month.

The [LFS performance and quality monitoring reports](#) provide data on response rates and other quality related issues for the LFS, including breakdowns of response by LFS wave, region and question-specific response issues. The average weekly earnings and vacancies estimates rely on data collected from surveys of employers.

More quality and methodology information on strengths, limitations, appropriate uses, and how the data were created is available in the following Quality and Methodology Information (QMI) reports:

- [LFS QMI](#)
- [Average weekly earnings QMI](#)
- [Vacancy Survey QMI](#)

Future publication dates

Because of a public holiday in Northern Ireland, the July 2020 and July 2021 labour market publication dates have both been moved two days later. This change will ensure that users across the UK have the same access to advice from the teams who produce the statistics on the day of release. For further information, please see [Statement on changing the release dates of ONS statistics to avoid public holidays](#).

21 April 2020
19 May 2020
16 June 2020
16 July 2020
11 August 2020
15 September 2020
13 October 2020
10 November 2020
15 December 2020
26 January 2021
23 February 2021
23 March 2021
20 April 2021
18 May 2021
15 June 2021
15 July 2021
17 August 2021
14 September 2021
12 October 2021
16 November 2021
14 December 2021

11 . Strengths and limitations

Accuracy of the statistics: estimating and reporting uncertainty

The figures in this bulletin come from surveys, which gather information from a sample rather than from the whole population. The sample is designed to be as accurate as possible given practical limitations such as time and cost constraints. Results from sample surveys are always estimates, not precise figures. This can have an impact on how changes in the estimates should be interpreted, especially for short-term comparisons.

As the number of people available in the sample gets smaller, the variability of the estimates that we can make from that sample size gets larger. Estimates for small groups (for example, unemployed people aged between 16 and 17 years), which are based on small subsets of the Labour Force Survey (LFS) sample, are less reliable and tend to be more volatile than for larger aggregated groups (for example, the total number of unemployed people).

In general, changes in the numbers (and especially the rates) reported in this bulletin between three-month periods are small and are not usually greater than the level that can be explained by sampling variability. Short-term movements in reported rates should be considered alongside longer-term patterns in the series and corresponding movements in other sources to give a fuller picture.

Further information is available in [A guide to labour market statistics](#).

Where to find data about uncertainty and reliability

[Dataset A11](#) shows sampling variabilities for estimates derived from the LFS.

Sampling variability information for average weekly earnings growth rates is available from the “Sampling Variability” worksheets within [datasets EARN01](#) and [EARN03](#).

The sampling variability of the three-month average vacancies level is around plus or minus 1.5% of that level. Information on revisions is available in the [labour market statistics revisions policy](#).

12 . Related links

[Labour market economic commentary](#)

Article | Released 17 March 2020

Additional economic analysis of the latest UK labour market headline statistics and long-term trends.

[Regional labour market statistics](#)

Bulletin | Released 17 March 2020

Regional breakdowns of changes in UK employment, unemployment and economic inactivity.

[UK and non-UK people in the labour market](#)

Article | Updated on 17 March 2020

Estimates of labour market activity by nationality and country of birth.

[Sickness absence in the labour market](#)

Article | Released 6 November 2019

Analysis of sickness absence rates of workers in the UK labour market, including number of days lost and reasons for absence.

[Young people not in education, employment or training \(NEET\)](#)

Bulletin | Released 21 November 2019

Estimates of people in the UK aged between 16 and 24 years who are not in education, employment or training.

[Working and workless households in the UK](#)

Bulletin | Released 27 November 2019

The economic status of households in the UK and the people living in them, in households where at least one person is aged between 16 and 64 years.

Index of Tables

The table below provides an index of the tables appearing in this Statistical Bulletin and it shows how these table numbers match up with the Excel spreadsheet datasets which are available on the website at:

<https://www.ons.gov.uk/employmentandlabourmarket/peopleinwork/employmentandemployeetypes/bulletins/uklabourmarket/March2020/relateddata>

Statistical Bulletin table number	Table description	Dataset
SUMMARY		
1	Labour Force Survey Summary	Dataset A02 SA
2 (*)	Labour market status by age group	Dataset A05 SA
EMPLOYMENT AND JOBS		
3	Full-time, part-time & temporary workers	Dataset EMP01 SA
4	Public and private sector employment	Dataset EMP02
4(1)	Public sector employment by industry	Dataset EMP03
5	Workforce jobs summary	Dataset JOBS01
6 (**)	Workforce jobs by industry	Dataset JOBS02
7	Actual weekly hours worked	Dataset HOUR01 SA
7(1)	Usual weekly hours worked	Dataset HOUR02 SA
NON-UK WORKERS		
8	Employment by country of birth and nationality	Dataset EMP06
8(1)	Unemployment and economic inactivity by country of birth and nationality	Dataset A12
UNEMPLOYMENT		
9	Unemployment by age and duration	Dataset UNEM01 SA
ECONOMIC ACTIVITY AND INACTIVITY		
10(*)	Economic activity by age	Dataset A05 SA
11	Economic inactivity by reason	Dataset INAC01 SA
12	Labour market and educational status of young people	Dataset A06 SA
EARNINGS		
13	Average Weekly Earnings (nominal) - Total pay	Dataset EARN01
14	Average Weekly Earnings (nominal) - Bonus pay	Dataset EARN01
15	Average Weekly Earnings (nominal) - Regular pay	Dataset EARN01
16	Average Weekly Earnings real and nominal (summary table)	Dataset EARN01
INTERNATIONAL SUMMARY		
17	International comparisons of employment and unemployment	Dataset A10
LABOUR DISPUTES		
18	Labour disputes	Dataset LABD01
VACANCIES		
19	Vacancies by size of business	Dataset VACS03
20	Vacancies and unemployment	Dataset VACS01
21	Vacancies by industry	Dataset VACS02
REDUNDANCIES		
22	Redundancies levels and rates	Dataset RED01 SA
REGIONAL SUMMARY		
23	Regional labour market summary	Dataset A07

(*) Tables 2 and 10 in the Statistical Bulletin pdf file have been amalgamated into one spreadsheet (Dataset A05 SA).

(**) Table JOBS02 provides more detail than Table 6 in the Statistical Bulletin pdf file.

The following symbols are used in the tables: p provisional, r revised, .. Not available, * suppressed due to small sample size.

The four-character identification codes appearing in the tables are the ONS references for the data series appearing in the Labour Market Statistics dataset which is available on the website at:

<https://www.ons.gov.uk/employmentandlabourmarket/peopleinwork/employmentandemployeetypes/datasets/labourmarketstatistics>

Summary of labour market statistics published on 17 March 2020

Series	Reference period	Latest estimate	Last time higher	Last time lower	Comparable data begins in
Employment level (aged 16 and over)	Nov-Jan 2020	32.985 million	Never	Oct-Dec 2019 (32.934 million)	Jan-Mar 1971
Employment rate (aged 16 to 64)	Nov-Jan 2020	76.5%	Never	Sep-Nov 2019 (76.3%)	Jan-Mar 1971
Unemployment level (aged 16 and over)	Nov-Jan 2020	1.343 million	Oct-Dec 2018 (1.363 million)	Oct-Dec 2019 (1.29 million)	Jan-Mar 1971
Unemployment rate (aged 16 and over)	Nov-Jan 2020	3.9%	Oct-Dec 2018 (4%)	Oct-Dec 2019 (3.8%)	Jan-Mar 1971
Inactivity level (aged 16 to 64)	Nov-Jan 2020	8.431 million	Oct-Dec 2019 (8.478 million)	Mar-May 1992 (8.428 million)	Jan-Mar 1971
Inactivity rate (aged 16 to 64)	Nov-Jan 2020	20.4%	Oct-Dec 2019 (20.5%)	Never	Jan-Mar 1971
Average Earnings (total pay - nominal)	Nov-Jan 2020	3.1%	Sep-Nov 2019 (3.2%)	Oct-Dec 2019 (2.9%)	Jan-Mar 2001
Average Earnings (regular pay - nominal)	Nov-Jan 2020	3.1%	Oct-Dec 2019 (3.2%)	May-Jul 2018 (2.9%)	Jan-Mar 2001
Average Earnings (total pay - real)	Nov-Jan 2020	1.5%	Sep-Nov 2019 (1.6%)	Oct-Dec 2019 (1.4%)	Jan-Mar 2001
Average Earnings (regular pay - real)	Nov-Jan 2020	1.5%	Oct-Dec 2019 (1.7%)	Oct-Dec 2018 (1.2%)	Jan-Mar 2001
Vacancies level	Nov-Jan 2020	817,000	May-Jul 2019 (818,000)	Nov-Jan 2020 (811,000)	Apr-Jun 2001

SUMMARY

1 Summary of headline LFS¹ indicators

United Kingdom (thousands)
seasonally adjusted

	LFS household population ¹				Headline indicators			
			Employment		Unemployment		Inactivity	
			Level	Rate ²	Level	Rate ³	Level	Rate ⁴
	All aged 16 & over	All aged 16 to 64	All aged 16 & over	All aged 16 to 64	All aged 16 & over	All aged 16 & over	All aged 16 to 64	All aged 16 to 64
	MGSL	LF2O	MGRZ	LF24	MGSC	MGSX	LF2M	LF2S
People								
Nov-Jan 2018	52,881	41,204	32,241	75.3	1,451	4.3	8,742	21.2
Nov-Jan 2019	53,161	41,291	32,714	76.1	1,338	3.9	8,549	20.7
Feb-Apr 2019	53,229	41,310	32,746	76.1	1,304	3.8	8,581	20.8
May-Jul 2019	53,298	41,330	32,777	76.1	1,294	3.8	8,587	20.8
Aug-Oct 2019	53,368	41,355	32,801	76.2	1,281	3.8	8,606	20.8
Nov-Jan 2020	53,439	41,379	32,985	76.5	1,343	3.9	8,431	20.4
Change on quarter	71	25	184	0.3	63	0.2	-175	-0.4
Change %	0.1	0.1	0.6		4.9		-2.0	
Change on year	278	88	271	0.4	5	0.0	-118	-0.3
Change %	0.5	0.2	0.8		0.4		-1.4	
Men	MGSM	YBTG	MGSA	MGSV	MGSD	MGSY	YBSO	YBTM
Nov-Jan 2018	25,860	20,482	17,091	79.8	755	4.2	3,406	16.6
Nov-Jan 2019	26,019	20,538	17,317	80.5	728	4.0	3,290	16.0
Feb-Apr 2019	26,056	20,550	17,290	80.3	719	4.0	3,341	16.3
May-Jul 2019	26,093	20,562	17,261	80.2	710	4.0	3,364	16.4
Aug-Oct 2019	26,132	20,576	17,315	80.4	715	4.0	3,340	16.2
Nov-Jan 2020	26,170	20,591	17,327	80.4	748	4.1	3,300	16.0
Change on quarter	39	14	12	0.1	33	0.2	-39	-0.2
Change %	0.1	0.1	0.1		4.7		-1.2	
Change on year	152	53	9	0.0	20	0.1	11	0.0
Change %	0.6	0.3	0.1		2.7		0.3	
Women	MGSN	LF2P	MGSB	LF25	MGSE	MGSZ	LF2N	LF2T
Nov-Jan 2018	27,021	20,722	15,150	70.9	696	4.4	5,337	25.8
Nov-Jan 2019	27,143	20,753	15,396	71.8	611	3.8	5,259	25.3
Feb-Apr 2019	27,173	20,760	15,456	72.0	586	3.7	5,240	25.2
May-Jul 2019	27,204	20,768	15,517	72.1	583	3.6	5,223	25.2
Aug-Oct 2019	27,236	20,778	15,487	72.0	566	3.5	5,266	25.3
Nov-Jan 2020	27,268	20,789	15,658	72.5	595	3.7	5,130	24.7
Change on quarter	32	10	171	0.5	29	0.1	-136	-0.7
Change %	0.1	0.0	1.1		5.2		-2.6	
Change on year	126	36	262	0.7	-15	-0.2	-129	-0.7
Change %	0.5	0.2	1.7		-2.5		-2.4	

Source: Labour Force Survey
Labour market statistics enquiries: labour.market@ons.gov.uk

1. The Labour Force Survey (LFS) is a survey of households in the UK.
2. The headline employment rate is the number of people aged 16 to 64 in employment divided by the population aged 16 to 64.
3. The headline unemployment rate is the number of unemployed people (aged 16+) divided by the economically active population (aged 16+). The economically active population is defined as those in employment plus those who are unemployed.
4. The headline inactivity rate is the number of people aged 16 to 64 divided by the population aged 16-64.

Note on headline employment, unemployment and inactivity rates

The headline employment and inactivity rates are based on the population aged 16 to 64 but the headline unemployment rate is based on the economically active population aged 16 and over. The employment and inactivity rates for those aged 16 and over are affected by the inclusion of the retired population in the denominators and are therefore less meaningful than the rates for those aged from 16 to 64. However, for the unemployment rate for those aged 16 and over, no such effect occurs as the denominator for the unemployment rate is the economically active population which only includes people in work or actively seeking and able to work.

Note on headline employment, unemployment and inactivity levels

The headline employment and unemployment levels are for those aged 16 and over; they measure all people in work or actively seeking and able to work. However, the headline inactivity level is for those aged 16 to 64. The inactivity rate for those aged 16 and over is less meaningful as it includes elderly people who have retired from the labour force.

SUMMARY

2(1) Labour market status by age group

United Kingdom (thousands) seasonally adjusted

People	Aged 16 and over						Aged 16-64					
	Employment		Unemployment		Inactivity		Employment		Unemployment		Inactivity	
	Level	Rate	Level	Rate	Level	Rate	Level	Rate	Level	Rate	Level	Rate
	MGRZ	MGSR	MGSC	MGSX	MGSI	YBTC	LF2G	LF24	LF2I	LF2Q	LF2M	LF2S
Nov-Jan 2018	32,241	61.0	1,451	4.3	19,190	36.3	31,028	75.3	1,434	4.4	8,742	21.2
Nov-Jan 2019	32,714	61.5	1,338	3.9	19,109	35.9	31,425	76.1	1,317	4.0	8,549	20.7
Feb-Apr 2019	32,746	61.5	1,304	3.8	19,179	36.0	31,443	76.1	1,287	3.9	8,581	20.8
May-Jul 2019	32,777	61.5	1,294	3.8	19,227	36.1	31,463	76.1	1,280	3.9	8,587	20.8
Aug-Oct 2019	32,801	61.5	1,281	3.8	19,286	36.1	31,493	76.2	1,256	3.8	8,606	20.8
Nov-Jan 2020	32,985	61.7	1,343	3.9	19,111	35.8	31,637	76.5	1,311	4.0	8,431	20.4
Change on quarter	184	0.3	63	0.2	-176	-0.4	144	0.3	55	0.1	-175	-0.4
Change %	0.6		4.9		-0.9		0.5		4.4		-2.0	
Change on year	271	0.2	5	0.0	2	-0.2	212	0.4	-6	0.0	-118	-0.3
Change %	0.8		0.4		0.0		0.7		-0.5		-1.4	
Men	MGSA	MGSS	MGSD	MGSY	MGSJ	YBTD	YBSF	MGSV	YBSI	YBTJ	YBSO	YBTM
Nov-Jan 2018	17,091	66.1	755	4.2	8,014	31.0	16,335	79.8	741	4.3	3,406	16.6
Nov-Jan 2019	17,317	66.6	728	4.0	7,973	30.6	16,532	80.5	716	4.1	3,290	16.0
Feb-Apr 2019	17,290	66.4	719	4.0	8,047	30.9	16,500	80.3	709	4.1	3,341	16.3
May-Jul 2019	17,261	66.1	710	4.0	8,123	31.1	16,497	80.2	701	4.1	3,364	16.4
Aug-Oct 2019	17,315	66.3	715	4.0	8,103	31.0	16,538	80.4	699	4.1	3,340	16.2
Nov-Jan 2020	17,327	66.2	748	4.1	8,096	30.9	16,565	80.4	725	4.2	3,300	16.0
Change on quarter	12	-0.1	33	0.2	-7	-0.1	28	0.1	26	0.1	-39	-0.2
Change %	0.1		4.7		-0.1		0.2		3.8		-1.2	
Change on year	9	-0.4	20	0.1	123	0.3	33	0.0	9	0.0	11	0.0
Change %	0.1		2.7		1.5		0.2		1.3		0.3	
Women	MGSB	MGST	MGSE	MGSZ	MGSK	YBTE	LF2H	LF25	LF2J	LF2R	LF2N	LF2T
Nov-Jan 2018	15,150	56.1	696	4.4	11,175	41.4	14,692	70.9	693	4.5	5,337	25.8
Nov-Jan 2019	15,396	56.7	611	3.8	11,136	41.0	14,892	71.8	602	3.9	5,259	25.3
Feb-Apr 2019	15,456	56.9	586	3.7	11,132	41.0	14,943	72.0	578	3.7	5,240	25.2
May-Jul 2019	15,517	57.0	583	3.6	11,104	40.8	14,966	72.1	579	3.7	5,223	25.2
Aug-Oct 2019	15,487	56.9	566	3.5	11,184	41.1	14,955	72.0	557	3.6	5,266	25.3
Nov-Jan 2020	15,658	57.4	595	3.7	11,015	40.4	15,072	72.5	586	3.7	5,130	24.7
Change on quarter	171	0.6	29	0.1	-169	-0.7	117	0.5	29	0.2	-136	-0.7
Change %	1.1		5.2		-1.5		0.8		5.2		-2.6	
Change on year	262	0.7	-15	-0.2	-121	-0.6	180	0.7	-15	-0.1	-129	-0.7
Change %	1.7		-2.5		-1.1		1.2		-2.6		-2.4	
People	Aged 16-17						Aged 18-24					
People	Employment		Unemployment		Inactivity		Employment		Unemployment		Inactivity	
	Level	Rate	Level	Rate	Level	Rate	Level	Rate	Level	Rate	Level	Rate
	YBTO	YBUA	YBVH	YBVK	YCAS	LWEX	YBTR	YBUD	YBVN	YBVQ	YCAV	LWFA
Nov-Jan 2018	337	23.9	125	27.1	947	67.2	3,480	61.8	410	10.5	1,740	30.9
Nov-Jan 2019	318	22.9	91	22.2	984	70.6	3,540	63.7	409	10.4	1,608	28.9
Feb-Apr 2019	339	24.3	86	20.3	967	69.5	3,470	62.7	394	10.2	1,672	30.2
May-Jul 2019	351	25.2	84	19.3	957	68.8	3,430	62.2	404	10.5	1,681	30.5
Aug-Oct 2019	348	24.9	87	20.0	965	68.9	3,411	62.1	386	10.2	1,699	30.9
Nov-Jan 2020	339	24.0	96	22.1	975	69.2	3,482	63.6	410	10.5	1,583	28.9
Change on quarter	-10	-0.9	9	2.1	10	0.2	71	1.5	24	0.4	-116	-2.0
Change %	-2.8		10.6		1.0		2.1		6.3		-6.8	
Change on year	20	1.2	6	0.0	-8	-1.5	-58	-0.1	1	0.2	-25	0.0
Change %	6.4		6.2		-0.8		-1.6		0.2		-1.5	
Men	YBTP	YBUB	YBVI	YBVL	YCAT	LWEY	YBTS	YBUE	YBVO	YBVR	YCAW	LWFB
Nov-Jan 2018	162	22.5	62	27.6	497	68.9	1,790	62.3	231	11.4	852	29.7
Nov-Jan 2019	154	21.6	48	23.6	511	71.7	1,827	64.4	250	12.0	761	26.8
Feb-Apr 2019	160	22.4	45	22.1	508	71.2	1,764	62.4	248	12.3	816	28.9
May-Jul 2019	164	23.0	46	22.0	502	70.5	1,745	61.9	246	12.3	826	29.3
Aug-Oct 2019	157	21.9	52	25.1	508	70.8	1,767	63.0	225	11.3	813	29.0
Nov-Jan 2020	148	20.5	56	27.5	518	71.7	1,798	64.3	242	11.9	755	27.0
Change on quarter	-9	-1.4	4	2.4	10	0.9	31	1.3	17	0.6	-58	-2.0
Change %	-5.6		6.8		2.0		1.7		7.4		-7.1	
Change on year	-6	-1.1	8	3.8	7	0.0	-29	-0.1	-8	-0.2	-6	0.2
Change %	-3.9		17.5		1.4		-1.6		-3.2		-0.7	
Women	YBTQ	YBUC	YBVJ	YBVM	YCAU	LWEZ	YBTT	YBUF	YBVP	YBVS	YCAX	LWFC
Nov-Jan 2018	175	25.4	63	26.7	450	65.4	1,690	61.3	178	9.5	888	32.2
Nov-Jan 2019	164	24.1	43	20.8	472	69.5	1,713	63.0	159	8.5	847	31.1
Feb-Apr 2019	179	26.4	41	18.6	459	67.6	1,707	63.0	146	7.9	856	31.6
May-Jul 2019	187	27.5	37	16.7	454	67.0	1,685	62.4	158	8.6	855	31.7
Aug-Oct 2019	191	28.0	35	15.3	457	66.9	1,643	61.1	160	8.9	886	32.9
Nov-Jan 2020	190	27.7	40	17.4	457	66.5	1,683	62.8	168	9.1	828	30.9
Change on quarter	-1	-0.3	6	2.1	0	-0.5	40	1.7	8	0.2	-58	-2.0
Change %	-0.5		16.3		0.0		2.5		4.9		-6.5	
Change on year	26	3.5	-3	-3.3	-15	-3.1	-29	-0.2	9	0.6	-19	-0.3
Change %	16.1		-6.4		-3.2		-1.7		5.5		-2.3	

Source: Labour Force Survey

Labour market statistics enquiries: labour.market@ons.gov.uk

SUMMARY

2(2) Labour market status by age group

United Kingdom (thousands) seasonally adjusted

People	Aged 25-34						Aged 35-49					
	Employment		Unemployment		Inactivity		Employment		Unemployment		Inactivity	
	Level	Rate	Level	Rate	Level	Rate	Level	Rate	Level	Rate	Level	Rate
	YBTU	YBUG	YCGM	YCGP	YCAV	LWFD	YBTX	YBUJ	YCGS	YCGV	YCBB	LWFG
Nov-Jan 2018	7,452	83.7	291	3.8	1,158	13.0	10,864	84.9	321	2.9	1,617	12.6
Nov-Jan 2019	7,535	84.2	257	3.3	1,153	12.9	10,893	85.4	289	2.6	1,570	12.3
Feb-Apr 2019	7,564	84.5	250	3.2	1,139	12.7	10,871	85.3	293	2.6	1,574	12.4
May-Jul 2019	7,557	84.3	265	3.4	1,141	12.7	10,867	85.4	269	2.4	1,590	12.5
Aug-Oct 2019	7,591	84.7	257	3.3	1,111	12.4	10,892	85.6	260	2.3	1,573	12.4
Nov-Jan 2020	7,615	85.0	258	3.3	1,084	12.1	10,896	85.6	276	2.5	1,551	12.2
Change on quarter	23	0.3	1	0.0	-28	-0.3	3	0.0	17	0.1	-22	-0.2
Change %	0.3		0.5		-2.5		0.0		6.4		-1.4	
Change on year	79	0.8	1	0.0	-70	-0.8	3	0.2	-13	-0.1	-19	-0.1
Change %	1.1		0.5		-6.0		0.0		-4.4		-1.2	
Men	YBTV	YBUH	YCGN	YCGQ	YCAZ	LWFE	YBTY	YBUK	YCGT	YCGW	YCBC	LWFH
Nov-Jan 2018	4,014	90.2	136	3.3	301	6.8	5,722	90.6	151	2.6	446	7.1
Nov-Jan 2019	4,046	90.2	137	3.3	304	6.8	5,753	91.4	128	2.2	414	6.6
Feb-Apr 2019	4,061	90.4	135	3.2	299	6.7	5,739	91.2	134	2.3	417	6.6
May-Jul 2019	4,047	89.9	145	3.4	311	6.9	5,743	91.4	123	2.1	418	6.7
Aug-Oct 2019	4,055	90.1	142	3.4	306	6.8	5,758	91.6	120	2.0	406	6.5
Nov-Jan 2020	4,066	90.3	140	3.3	298	6.6	5,723	91.1	136	2.3	425	6.8
Change on quarter	11	0.2	-2	-0.1	-8	-0.2	-35	-0.6	16	0.3	19	0.3
Change %	0.3		-1.4		-2.6		-0.6		13.5		4.7	
Change on year	20	0.1	2	0.0	-6	-0.1	-31	-0.3	9	0.2	11	0.2
Change %	0.5		1.8		-1.8		-0.5		6.7		2.7	
Women	YBTW	YBUI	YCGO	YCGR	YCBA	LWFF	YBTZ	YBUL	YCGU	YCGX	YCBD	LWFI
Nov-Jan 2018	3,439	77.3	155	4.3	857	19.3	5,142	79.3	170	3.2	1,171	18.1
Nov-Jan 2019	3,489	78.3	119	3.3	849	19.0	5,139	79.6	161	3.0	1,156	17.9
Feb-Apr 2019	3,503	78.6	116	3.2	840	18.8	5,133	79.6	159	3.0	1,157	17.9
May-Jul 2019	3,510	78.7	120	3.3	830	18.6	5,125	79.5	146	2.8	1,171	18.2
Aug-Oct 2019	3,536	79.3	115	3.2	805	18.1	5,134	79.7	140	2.6	1,166	18.1
Nov-Jan 2020	3,549	79.7	118	3.2	785	17.6	5,173	80.3	140	2.6	1,126	17.5
Change on quarter	13	0.4	3	0.1	-20	-0.4	38	0.6	1	0.0	-41	-0.6
Change %	0.4		2.7		-2.5		0.7		0.4		-3.5	
Change on year	60	1.4	-1	-0.1	-64	-1.4	34	0.7	-21	-0.4	-30	-0.4
Change %	1.7		-0.8		-7.5		0.7		-13.1		-2.6	
People	Aged 50-64						Age 65+					
People	Employment		Unemployment		Inactivity		Employment		Unemployment		Inactivity	
	Level	Rate	Level	Rate	Level	Rate	Level	Rate	Level	Rate	Level	Rate
	LF26	LF2U	LF28	LF2E	LF2A	LF2W	LFK4	LFK6	K5HU	K5HW	LFL4	LFL6
Nov-Jan 2018	8,894	71.4	286	3.1	3,280	26.3	1,213	10.4	17	1.4	10,447	89.5
Nov-Jan 2019	9,139	72.3	272	2.9	3,234	25.6	1,289	10.9	21	1.6	10,560	89.0
Feb-Apr 2019	9,198	72.5	263	2.8	3,228	25.4	1,303	10.9	17	1.3	10,598	88.9
May-Jul 2019	9,258	72.7	259	2.7	3,218	25.3	1,314	11.0	14	1.0	10,640	88.9
Aug-Oct 2019	9,250	72.4	267	2.8	3,257	25.5	1,309	10.9	24	1.8	10,681	88.9
Nov-Jan 2020	9,307	72.6	271	2.8	3,238	25.3	1,348	11.2	32	2.3	10,680	88.6
Change on quarter	56	0.2	4	0.0	-20	-0.2	39	0.3	7	0.5	-1	-0.3
Change %	0.6		1.4		-0.6		3.0		30.7		0.0	
Change on year	168	0.3	-1	-0.1	4	-0.3	59	0.3	11	0.7	120	-0.4
Change %	1.8		-0.4		0.1		4.6		50.7		1.1	
Men	MGUX	YBUN	MGVM	MGXF	MGWB	LWFK	MGVA	YBUQ	MGVP	MGXI	MGWE	LWFN
Nov-Jan 2018	4,648	76.0	160	3.3	1,310	21.4	756	14.1	15	1.9	4,608	85.7
Nov-Jan 2019	4,751	76.6	153	3.1	1,299	20.9	785	14.3	12	1.5	4,683	85.5
Feb-Apr 2019	4,777	76.7	147	3.0	1,301	20.9	790	14.3	10	1.2	4,707	85.5
May-Jul 2019	4,799	76.8	142	2.9	1,306	20.9	763	13.8	9	1.2	4,759	86.0
Aug-Oct 2019	4,800	76.6	159	3.2	1,306	20.8	777	14.0	16	2.0	4,763	85.7
Nov-Jan 2020	4,830	76.9	151	3.0	1,303	20.7	762	13.6	23	2.9	4,795	85.9
Change on quarter	30	0.2	-8	-0.2	-3	-0.1	-15	-0.3	7	0.9	33	0.2
Change %	0.6		-5.2		-0.2		-2.0		44.4		0.7	
Change on year	78	0.3	-2	-0.1	4	-0.2	-23	-0.7	11	1.4	112	0.5
Change %	1.7		-1.3		0.3		-3.0		85.3		2.4	
Women	LF27	LF2V	LF29	LF2F	LF2B	LF2X	LFK5	LFK7	K5HV	K5HX	LFL5	LFL7
Nov-Jan 2018	4,247	66.9	126	2.9	1,970	31.1	457	7.3	*	*	5,839	92.7
Nov-Jan 2019	4,387	68.1	119	2.6	1,934	30.0	504	7.9	9	1.7	5,877	92.0
Feb-Apr 2019	4,421	68.4	116	2.6	1,927	29.8	514	8.0	8	1.4	5,892	91.9
May-Jul 2019	4,459	68.7	117	2.6	1,912	29.5	551	8.6	*	*	5,881	91.4
Aug-Oct 2019	4,450	68.4	107	2.4	1,951	30.0	531	8.2	9	1.6	5,918	91.6
Nov-Jan 2020	4,477	68.5	119	2.6	1,934	29.6	586	9.0	9	1.5	5,885	90.8
Change on quarter	26	0.2	12	0.2	-17	-0.4	55	0.8	0	-0.1	-33	-0.8
Change %	0.6		11.1		-0.9		10.3		5.1		-0.6	
Change on year	89	0.4	1	0.0	0	-0.4	82	1.2	0	-0.2	7	-1.2
Change %	2.0		0.6		0.0		16.3		2.2		0.1	

Source: Labour Force Survey

Labour market statistics enquiries: labour.market@ons.gov.uk

EMPLOYMENT AND JOBS

3 Full-time, part-time and temporary workers

United Kingdom (thousands of people aged 16 and over) seasonally adjusted

	All in employment					Full-time and part-time workers ¹							Total Workers with second jobs
	Total	Employees	Self employed	Unpaid family workers	Government supported training & employment programmes ²	Total people working full-time	total people working part-time	Employees working full-time	Employees working part-time	Self-employed people working full-time	Self-employed people working part-time		
												1	
People	MGRZ	MGRN	MGRQ	MGRT	MGRW	YCBE	YCBH	YCBK	YCBN	YCBQ	YCBT	YCBW	
Nov-Jan 2018	32,241	27,279	4,773	122	66	23,694	8,547	20,283	6,996	3,350	1,424	1,139	
Nov-Jan 2019	32,714	27,703	4,839	127	45	24,118	8,596	20,667	7,035	3,409	1,430	1,141	
Feb-Apr 2019	32,746	27,665	4,913	132	37	24,149	8,597	20,632	7,033	3,471	1,442	1,125	
May-Jul 2019	32,777	27,671	4,928	126	53	24,172	8,605	20,661	7,009	3,456	1,472	1,147	
Aug-Oct 2019	32,801	27,660	4,960	126	55	24,238	8,564	20,712	6,948	3,483	1,477	1,139	
Nov-Jan 2020	32,985	27,760	5,033	134	58	24,463	8,522	20,851	6,908	3,556	1,477	1,171	
Change on quarter	184	100	72	8	3	225	-42	140	-40	73	0	32	
Change %	0.6	0.4	1.5	6.6	5.4	0.9	-0.5	0.7	-0.6	2.1	0.0	2.8	
Change on year	271	57	194	7	13	345	-74	184	-127	147	47	30	
Change %	0.8	0.2	4.0	5.3	29.9	1.4	-0.9	0.9	-1.8	4.3	3.3	2.6	
Men	MGSA	MGRO	MGRR	MGRU	MGRX	YCBF	YCBI	YCBL	YCBO	YCBR	YCBU	YCBX	
Nov-Jan 2018	17,091	13,828	3,169	59	35	14,822	2,269	12,174	1,654	2,615	554	491	
Nov-Jan 2019	17,317	13,995	3,243	54	26	15,037	2,280	12,348	1,647	2,668	575	488	
Feb-Apr 2019	17,290	13,915	3,289	67	19	15,010	2,280	12,301	1,614	2,686	603	472	
May-Jul 2019	17,261	13,893	3,276	57	35	15,024	2,237	12,305	1,587	2,683	593	475	
Aug-Oct 2019	17,315	13,926	3,295	63	30	15,063	2,251	12,336	1,591	2,701	594	486	
Nov-Jan 2020	17,327	13,918	3,318	61	29	15,110	2,217	12,344	1,574	2,732	587	490	
Change on quarter	12	-8	23	-2	-1	46	-34	9	-17	30	-7	4	
Change %	0.1	-0.1	0.7	-2.4	-3.0	0.3	-1.5	0.1	-1.1	1.1	-1.2	0.8	
Change on year	9	-77	76	7	4	72	-63	-3	-74	64	12	2	
Change %	0.1	-0.6	2.3	12.7	14.0	0.5	-2.8	0.0	-4.5	2.4	2.0	0.5	
Women	MGSB	MGRP	MGRS	MGRV	MGRY	YCBG	YCBJ	YCBM	YCBP	YCBS	YCBV	YCBY	
Nov-Jan 2018	15,150	13,451	1,605	63	31	8,872	6,278	8,109	5,342	735	870	648	
Nov-Jan 2019	15,396	13,708	1,596	73	19	9,080	6,316	8,320	5,388	741	855	653	
Feb-Apr 2019	15,456	13,750	1,624	65	18	9,139	6,317	8,331	5,419	785	839	653	
May-Jul 2019	15,517	13,778	1,652	69	18	9,148	6,368	8,356	5,422	773	879	673	
Aug-Oct 2019	15,487	13,734	1,665	63	25	9,174	6,313	8,376	5,358	782	883	652	
Nov-Jan 2020	15,658	13,842	1,714	73	29	9,353	6,305	8,507	5,335	824	890	681	
Change on quarter	171	108	49	10	4	179	-8	131	-23	42	7	28	
Change %	1.1	0.8	3.0	15.5	15.4	2.0	-0.1	1.6	-0.4	5.4	0.8	4.3	
Change on year	262	134	118	0	10	273	-11	187	-53	83	35	27	
Change %	1.7	1.0	7.4	-0.2	51.1	3.0	-0.2	2.3	-1.0	11.2	4.1	4.2	
	Temporary employees (reasons for temporary working)							Part-time workers (reasons for working part-time) ³					
	Total as % of all employees	Could not find permanent job	% that could not find permanent job	Did not want permanent job	% that did not want permanent job	Had a contract with period of training	Some other reason	Total ⁴	Could not find full-time job	% that could not find full-time job	Did not want full-time job	% that did not want full-time job	Student or at school
	13	14	15	16	17	18	19	20	21	22	23	24	25
People	YCBZ	YCCC	YCCF	YCCI	YCCL	YCCO	YCCR	YCCU	YCCX	YCDA	YCDD	YCDG	YCDJ
Nov-Jan 2018	1,549	5.7	452	29.2	430	152	515	8,420	1,004	11.9	6,000	255	1,099
Nov-Jan 2019	1,553	5.6	398	25.6	464	128	563	8,465	932	11.0	6,127	260	1,080
Feb-Apr 2019	1,486	5.4	375	25.2	446	131	534	8,475	933	11.0	6,121	284	1,072
May-Jul 2019	1,424	5.1	357	25.0	410	124	533	8,481	890	10.5	6,133	278	1,116
Aug-Oct 2019	1,423	5.1	364	25.6	370	131	557	8,425	875	10.4	6,122	275	1,095
Nov-Jan 2020	1,446	5.2	363	25.1	410	122	551	8,385	909	10.8	6,048	297	1,081
Change on quarter	24	0.1	-2	-0.5	40	-9	-6	-40	35	0.5	-74	22	-14
Change %	1.7	-0.4	-0.4	-11.6	10.9	-6.9	-1.1	-0.5	4.0	-1.2	-1.2	8.2	-1.3
Change on year	-107	-0.4	-35	-0.6	-54	-6	-12	-80	-22	-0.2	-79	37	1
Change %	-6.9	-8.9	-8.9	-11.6	-4.4	-2.2	-0.9	-2.4	-2.4	-1.3	14.3	0.1	
Men	YCCA	YCCD	YCCG	YCCJ	YCCM	YCCP	YCCS	YCCV	YCCY	YCDB	YCDE	YCDH	YCDK
Nov-Jan 2018	748	5.4	233	31.1	192	80	243	2,208	449	20.3	1,181	84	464
Nov-Jan 2019	712	5.1	202	28.4	197	65	248	2,222	416	18.7	1,246	94	447
Feb-Apr 2019	679	4.9	198	29.2	190	62	228	2,217	406	18.3	1,260	93	432
May-Jul 2019	647	4.7	183	28.2	164	60	241	2,180	370	17.0	1,255	92	439
Aug-Oct 2019	673	4.8	186	27.7	158	69	259	2,184	374	17.1	1,262	89	437
Nov-Jan 2020	687	4.9	175	25.5	189	64	259	2,160	375	17.3	1,243	102	426
Change on quarter	15	0.1	-11	-2.3	32	-5	0	-24	1	0.2	-19	13	-11
Change %	2.2	-6.1	-6.1	20.0	-7.6	0.0	-1.1	0.3	-1.5	14.7	-2.5		
Change on year	-24	-0.1	-27	-3.0	-8	-1	12	-62	-41	-1.4	-3	7	-21
Change %	-3.4	-13.5	-13.5	-3.9	-1.8	4.8	-2.8	-9.9	-0.2	7.9	-4.7		
Women	YCCB	YCCE	YCCH	YCCK	YCCN	YCCQ	YCCT	YCCW	YCCZ	YCDC	YCDF	YCDI	YCDL
Nov-Jan 2018	802	6.0	219	27.4	238	72	272	6,212	555	8.9	4,820	170	635
Nov-Jan 2019	841	6.1	196	23.3	268	63	315	6,243	516	8.3	4,881	166	633
Feb-Apr 2019	806	5.9	176	21.9	256	68	306	6,257	527	8.4	4,861	191	640
May-Jul 2019	777	5.6	174	22.4	247	64	292	6,301	520	8.3	4,878	186	677
Aug-Oct 2019	750	5.5	178	23.7	212	62	298	6,241	501	8.0	4,860	186	658
Nov-Jan 2020	759	5.5	188	24.8	221	58	291	6,225	535	8.6	4,806	196	655
Change on quarter	9	0.0	10	1.0	9	-4	-6	-16	34	0.6	-54	9	-3
Change %	1.2	5.5	5.5	4.2	-6.1	-2.1	-0.3	6.7	-1.1	5.0	-0.4		
Change on year	-83	-0.7	-8	1.5	-46	-4	-24	-18	19	0.3	-76	30	22
Change %	-9.8	-4.1	-4.1	-17.3	-7.0	-7.6	-0.3	3.6	-1.6	17.9	3.5		

Relationship between columns: 1= 2+3+4+5; 1=6+7; 2=8+9; 3=10+11; 13=15+17+18+19; 20=9+11; 14=13/2; 16=15/13; 22=21/20

Source: Labour Force Survey

- The split between full-time and part-time employment is based on respondents' self-classification.
- This series does not include all people on these programmes; it only includes those engaging in any form of work, work experience or work-related training.
- These series cover Employees and Self-employed only. These series include some temporary employees recorded in columns 13 to 19.
- The total includes those who did not give a reason for working part-time and it therefore does not equal the sum of columns 21, 23, 24 and 25.

Labour market statistics enquiries: labour.market@ons.gov.uk

EMPLOYMENT AND JOBS

4 Public and private sector employment

United Kingdom (thousands of people aged 16 and over), seasonally adjusted

	Public sector		Private sector ¹		Total employment ² (000s)	Public sector excluding effects of major reclassifications (See Explanatory note at bottom of table)		Private sector excluding effects of major reclassifications (See Explanatory note at bottom of table)	
	(000s)	(%)	(000s)	(%)		(000s)	(%)	(000s)	(%)
	1	2	3	4		5	6	7	8
	G7AU	G9BZ	G7K5	G9C2	G7GO	MFY7	MFY9	MFZ2	MFY5
Sep 17	5,476	17.1	26,618	82.9	32,094	5,219	16.3	26,875	83.7
Dec 17	5,343	16.6	26,898	83.4	32,241	5,224	16.2	27,017	83.8
Mar 18	5,351	16.5	27,038	83.5	32,389	5,233	16.2	27,156	83.8
Jun 18	5,352	16.5	27,056	83.5	32,408	5,247	16.2	27,161	83.8
Sep 18	5,345	16.5	27,147	83.5	32,492	5,257	16.2	27,235	83.8
Dec 18	5,359	16.4	27,355	83.6	32,714	5,271 r	16.1	27,443 r	83.9
Mar 19	5,376	16.4	27,370	83.6	32,746	5,287	16.1	27,459	83.9
Jun 19	5,398	16.5	27,379	83.5	32,777	5,307	16.2	27,470	83.8
Sep 19	5,423 r	16.5	27,378 r	83.5	32,801	5,336 r	16.3	27,465 r	83.7
Dec 19	5,438	16.5	27,547	83.5	32,985	5,349	16.2	27,636	83.8
Change on quarter	15	0.0	169	0.0	184	13	-0.1	171	0.1
Change %	0.3	-	0.6	-	0.6	0.2	-	0.6	-
Change on year	79	0.1	192	-0.1	271	78	0.1	193	-0.1
Change %	1.5	-	0.7	-	0.8	1.5	-	0.7	-

Enquiries 01633 455400

Source: Labour Force Survey (LFS) and returns from public sector organisations

Relationship between columns: 2 = 1/5*100; 3 = 5-1; 4 = 3/5*100, 5=6+8

See footnotes under table 4(1)

4(1) Public sector employment by industry

United Kingdom (thousands of people aged 16 and over), seasonally adjusted

	Construction	HM Forces ³	Police (including civilians)	Public administration	Of which: Civil Service ⁴	Education	National Health Service	Other health and social work	Other (including financial corporations)	Total public sector employment ⁵
	1	2	3	4	5	6	7	8	9	10
	G7ER	G7EU	G7EX	G7F2	G7D6	G7F5	G7FG	G7FJ	G7FM	G7AU
Sep 17	39	155	245	1,016	423	1,499	1,628	273	621	5,476
Dec 17	38	155	246	1,019	427	1,495	1,639	231	521	5,343
Mar 18	35	155	246	1,024	430	1,498	1,642	229	524	5,351
Jun 18	35	153	247	1,029	431	1,501	1,650	222	516	5,352
Sep 18	35	153	247	1,033	436	1,495	1,662	216	506	5,345
Dec 18	35	151	247	1,040	440	1,496 r	1,670 r	215	504	5,359
Mar 19	36	153	249	1,051	446	1,494	1,683	215	499	5,376
Jun 19	36	152	249	1,054	448	1,496	1,696	215	500	5,398
Sep 19	35 r	153	252 r	1,056	451	1,497 r	1,711 r	214 r	505	5,423
Dec 19	35	153	252	1,065	453	1,493	1,725	213	501	5,438
Change on quarter	0	0	0	9	2	-4	14	-1	-4	15
Change %	0.0	0.0	0.0	0.9	0.4	-0.3	0.8	-0.5	-0.8	0.3
Change on year	0	2	5	25	13	-3	55	-2	-3	79
Change %	0.0	1.3	2.0	2.4	3.0	-0.2	3.3	-0.9	-0.6	1.5

Enquiries 01633 455400

Source: returns from public sector organisations

Explanatory Note: The public and private sector employment series have been affected by a number of major reclassifications where bodies employing large numbers of people have moved between the public and private sectors. These major reclassifications are as follows:

Further Education corporations and Sixth Form College corporations in England are included in the private sector from June 2012 but in the public sector for earlier time periods.

Royal Mail plc is included in the private sector from December 2013 but in the public sector for earlier time periods.

Lloyds Banking Group plc is included in the public sector from December 2008 to December 2013 but in the private sector for earlier and later time periods.

Royal Bank of Scotland plc is included in the public sector from December 2008 but in the private sector for earlier time periods.

Network Rail is included in the private sector before December 2002. From December 2002 onwards it is included in the public sector (except for the period from June 2003 to March 2004, when it is included in the private sector).

Northern Rock is included in the public sector from December 2007 until December 2011 but in the private sector for earlier and later time periods.

Bradford and Bingley is included in the public sector from September 2008 but in the private sector for earlier time periods.

Welsh Further Education colleges are included in the private sector from March 2015 but in the public sector for earlier time periods.

Housing associations in England are included in the public sector between September 2008 and September 2017; they are in the private sector for earlier and later time periods.

Housing associations in Scotland are included in the public sector from September 2001 until June 2018; they are included in the private sector for earlier and later time periods.

Housing associations in Wales are included in the private sector from June 2018; they are included in the public sector for earlier time periods.

Housing associations in Northern Ireland are included in the public sector back to the start of the time series in March 1999.

The series shown at Table 4 (in columns 6 to 9) for public and private sector employment excluding the effects of major reclassifications show all of the above mentioned bodies included in the private sector for all time periods and excluded from the public sector for all time periods. When using figures from this table, the latest estimate of the number of people employed in the public and private sectors should be taken from columns 1 and 3 respectively. However the quarterly and annual changes in employment shown in these columns are affected by reclassifications. Figures from columns 6 and 8 should be used for assessments of the recent underlying changes in public and private sector employment. The changes in employment shown in these columns are measured on a consistent basis to remove the effect of major reclassifications.

1. Estimated as the difference between LFS total employment and the data from public sector organisations.

2. LFS employment data for March refer to February-April, June refers to May-July, September refers to August-October and December refers to November-January.

3. This series excludes locally engaged staff stationed outside the United Kingdom.

EMPLOYMENT AND JOBS

5 Workforce jobs

United Kingdom (thousands), seasonally adjusted

	Workforce jobs	Employee jobs	Self-employment jobs ¹	HM Forces	Government-supported trainees ¹
	1	2	3	4	5
	DYDC	BCAJ	DYZN	LOJX	LOJU
Dec 17	34,874	30,206	4,481	155	31
Mar 18	34,975	30,293	4,500	154	28
Jun 18	35,012	30,295	4,537	153	28
Sep 18	35,101	30,444	4,481	153	23
Dec 18	35,291	30,530	4,589	152	21
Mar 19	35,542	30,705	4,658	153	27
Jun 19	35,676	30,810	4,673	152	41
Sep 19 (r)	35,764	30,965	4,618	153	29
Dec 19 (p)	35,832	30,952	4,692	153	35
Change on quarter	67	-13	74	0	6
Change %	0.2	0.0	1.6	-0.1	21.0
Change on year	541	423	103	1	14
Change %	1.5	1.4	2.2	0.9	64.2

Relationship between columns: 1=2+3+4+5

See footnotes under table 6

6 Workforce jobs by industry

Standard Industrial Classification (2007)

United Kingdom (thousands), seasonally adjusted

SIC 2007 sections	All jobs	Agriculture, forestry & fishing	Mining & quarrying	Manufacturing	Electricity, gas, steam & air conditioning supply	Water supply, sewerage, waste & remediation activities	Construction	Wholesale & retail trade; repair of motor vehicles and motor cycles	Transport & storage	Accommodation & food service activities	Information & communication
	A-T	A	B	C	D	E	F	G	H	I	J
	DYDC	JWR5	JWR6	JWR7	JWR8	JWR9	JWS2	JWS3	JWS4	JWS5	JWS6
Dec 17	34,874	422	59	2,697	144	228	2,330	4,994	1,690	2,353	1,461
Mar 18	34,975	413	62	2,697	147	226	2,315	4,996	1,696	2,398	1,478
Jun 18	35,012	407	63	2,713	150	227	2,310	4,997	1,733	2,432	1,478
Sep 18	35,101	410	61	2,695	154	227	2,322	4,998	1,741	2,419	1,462
Dec 18	35,291	375	59	2,686	149	231	2,343	5,000	1,799	2,452	1,480
Mar 19	35,542	386	60	2,717	143	241	2,344	5,017	1,784	2,456	1,508
Jun 19	35,676	391	58	2,709	145	243	2,305	5,010	1,825	2,495	1,513
Sep 19 (r)	35,764	408	57	2,717	144	246	2,265	4,979	1,805	2,492	1,524
Dec 19 (p)	35,832	411	58	2,704	154	241	2,310	4,967	1,799	2,513	1,536
Change on quarter	67	3	1	-13	10	-5	44	-12	-6	21	11
Change %	0.2	0.7	2.0	-0.5	7.2	-2.0	2.0	-0.2	-0.3	0.8	0.7
Change on year	541	36	0	18	5	10	-34	-33	1	61	56
Change %	1.5	9.7	-0.1	0.7	3.3	4.3	-1.4	-0.7	0.0	2.5	3.7

SIC 2007 sections	Financial & insurance activities	Real estate activities	Professional scientific & technical activities	Administrative & support service activities	Public admin & defence; compulsory social security ²	Education	Human health & social work activities	Arts, entertainment & recreation	Other service activities	People employed by households, etc.	Total services
	K	L	M	N	O	P	Q	R	S	T	G-T
	JWS7	JWS8	JWS9	JWT2	JWT3	JWT4	JWT5	JWT6	JWT7	KW78	JWT8
Dec 17	1,114	589	3,028	3,018	1,482	2,917	4,358	1,019	914	56	28,993
Mar 18	1,125	591	3,031	3,014	1,486	2,939	4,359	1,006	937	59	29,115
Jun 18	1,111	564	3,037	3,030	1,493	2,935	4,335	1,005	925	68	29,143
Sep 18	1,123	587	3,093	3,046	1,495	2,937	4,350	1,000	919	60	29,231
Dec 18	1,118	597	3,143	3,031	1,506	2,954	4,359	1,014	947	49	29,448
Mar 19	1,126	582	3,210	3,036	1,513	2,963	4,413	1,026	960	59	29,652
Jun 19	1,123	593	3,251	3,042	1,511	2,952	4,463	1,016	967	63	29,826
Sep 19 (r)	1,128	627	3,247	3,062	1,523	2,971	4,491	1,026	994	56	29,927
Dec 19 (p)	1,127	659	3,225	3,042	1,531	2,981	4,477	1,035	1,008	54	29,954
Change on quarter	-2	31	-22	-19	8	10	-15	9	14	-2	26
Change %	-0.2	5.0	-0.7	-0.6	0.5	0.3	-0.3	0.9	1.4	-3.3	0.1
Change on year	9	62	83	11	25	27	117	21	61	5	505
Change %	0.8	10.3	2.6	0.4	1.7	0.9	2.7	2.1	6.5	10.6	1.7

Workforce jobs enquiries 01633 456776

Sources: Employer surveys, Labour Force Survey and administrative sources

EMPLOYMENT AND JOBS

7 Actual weekly hours worked

United Kingdom (hours worked by people aged 16 and over), seasonally adjusted

	Total weekly hours (millions) ¹²	Average (mean) actual weekly hours worked			
		All workers ¹	Full-time workers ³	Part-time workers ³	Second Jobs
People	YBUS	YBUV	YBUY	YBVB	YBVE
Nov-Jan 2018	1,034.6	32.1	37.3	16.2	9.9
Nov-Jan 2019	1,047.5	32.0	37.2	16.2	9.7
Feb-Apr 2019	1,054.1	32.2	37.4	16.3	9.7
May-Jul 2019	1,049.8	32.0	37.2	16.3	9.7
Aug-Oct 2019	1,055.7	32.2	37.3	16.4	9.8
Nov-Jan 2020	1,051.1	31.9	36.9	16.1	9.8
Change on quarter	-4.6	-0.3	-0.4	-0.2	0.0
Change %	-0.4	-1.0	-1.1	-1.4	0.3
Change on year	3.6	-0.2	-0.3	-0.1	0.1
Change %	0.3	-0.5	-0.9	-0.4	1.3
Men	YBUT	YBUW	YBUZ	YBVC	YBVF
Nov-Jan 2018	623.5	36.5	39.3	15.9	10.8
Nov-Jan 2019	629.5	36.4	39.1	16.3	10.4
Feb-Apr 2019	629.5	36.4	39.1	16.3	10.7
May-Jul 2019	625.8	36.3	38.9	16.4	10.3
Aug-Oct 2019	628.3	36.3	39.0	16.2	10.6
Nov-Jan 2020	622.0	35.9	38.5	15.9	10.9
Change on quarter	-6.2	-0.4	-0.4	-0.3	0.4
Change %	-1.0	-1.1	-1.1	-1.9	3.5
Change on year	-7.4	-0.4	-0.6	-0.4	0.5
Change %	-1.2	-1.2	-1.4	-2.6	4.5
Women	YBUU	YBUX	YBVA	YBVD	YBVG
Nov-Jan 2018	411.1	27.1	34.1	16.3	9.1
Nov-Jan 2019	418.0	27.2	34.1	16.2	9.1
Feb-Apr 2019	424.6	27.5	34.6	16.3	9.0
May-Jul 2019	423.9	27.3	34.3	16.3	9.2
Aug-Oct 2019	427.4	27.6	34.7	16.4	9.2
Nov-Jan 2020	429.1	27.4	34.3	16.2	9.0
Change on quarter	1.6	-0.2	-0.4	-0.2	-0.2
Change %	0.4	-0.7	-1.1	-1.2	-2.2
Change on year	11.0	0.2	0.1	0.1	-0.1
Change %	2.6	0.9	0.4	0.4	-1.1

Source: Labour Force Survey

Labour market statistics enquiries: labour.market@ons.gov.uk

1 Main and second job

2 Total actual weekly hours worked including paid and unpaid overtime.

3 Main job only. The split between full-time and part-time employment is based on respondents' self-classification.

7 (1) Usual weekly hours of work¹

United Kingdom, seasonally adjusted

	All in Employment (%)			Employees (%)			Self-Employed (%)		
	People	Men	Women	People	Men	Women	People	Men	Women
Nov-Jan 2019									
Less than 6 Hours	1.4	0.9	2.0	0.9	0.6	1.3	3.3	1.7	6.4
6 up to 15 hours	6.3	3.5	9.5	5.7	3.1	8.5	9.2	4.9	18.0
16 up to 30 hours	20.1	10.4	31.1	19.7	8.9	30.6	22.9	16.4	36.0
31 up to 45 hours	54.1	59.9	47.6	56.7	63.1	50.3	39.5	46.4	25.4
Over 45 hours	18.1	25.4	9.9	17.0	24.4	9.4	25.2	30.6	14.2
Total (thousands)	32,714	17,317	15,396	27,703	13,995	13,708	4,839	3,243	1,596
Aug-Oct 2019									
Less than 6 Hours	1.5	0.9	2.0	1.0	0.7	1.3	3.4	1.7	6.9
6 up to 15 hours	6.4	3.5	9.5	5.8	3.1	8.5	8.7	4.8	16.5
16 up to 30 hours	19.6	10.0	30.3	19.0	8.4	29.7	23.2	16.3	36.7
31 up to 45 hours	54.2	60.1	47.5	57.0	63.6	50.3	38.8	45.8	25.0
Over 45 hours	18.5	25.4	10.7	17.2	24.2	10.2	25.8	31.4	14.9
Total (thousands)	32,801	17,315	15,487	27,660	13,926	13,734	4,960	3,295	1,665
Nov-Jan 2020									
Less than 6 Hours	1.4	0.9	2.0	1.0	0.6	1.4	2.9	1.9	5.1
6 up to 15 hours	6.3	3.4	9.5	5.7	3.0	8.5	8.8	4.3	17.3
16 up to 30 hours	19.1	9.7	29.5	18.5	8.3	28.8	22.8	15.8	36.4
31 up to 45 hours	55.0	60.9	48.6	57.8	64.3	51.3	40.3	46.7	27.8
Over 45 hours	18.1	25.1	10.4	16.9	23.8	10.0	25.3	31.3	13.5
Total (thousands)	32,985	17,327	15,658	27,760	13,918	13,842	5,033	3,318	1,714

1 Total usual weekly hours worked by people aged 16 and over in main job including paid and unpaid overtime.

Source: Labour Force Survey

Labour market statistics enquiries: labour.market@ons.gov.uk

NON-UK WORKERS

8(1) Employment levels and rates by country of birth and nationality

(First published on 18 February 2020)

United Kingdom (thousands of people aged 16 and over) not seasonally adjusted

Country of birth	Europe										Africa			Asia			America and Oceania							
	European Union (EU)										Other Europe (not in EU)	Total Africa	Of which: South Africa	Total Asia	Of which: India	Of which: Pakistan and Bangladesh	Total America and Oceania	Of which: USA	Of which: Australia and New Zealand	Total Non-EU ⁷				
	Total ¹	UK	Non UK	Total Europe	Total EU (EU27) ²	EU14 ³	EU8 ⁴	EU2 ⁵	Other EU ⁶	FSC2											EQ4Q	JJR3	JJR5	EQ4R
Oct - Dec 2017	32,230	26,659	5,568	2,617	2,378	995	992	357	34	239	869	171	1,492	465	352	591	99	145	3,190					
Oct - Dec 2018	32,671	27,011	5,651	2,550	2,303	989	886	384	43	248	893	174	1,568	476	344	640	107	130	3,349					
Jan - Mar 2019	32,641	26,838	5,796	2,666	2,420	994	947	438	41	246	933	200	1,536	452	366	662	108	139	3,376					
Apr - Jun 2019	32,752	26,967	5,777	2,692	2,438	1,019	971	407	41	254	923	198	1,504	475	387	658	105	167	3,339					
Jul - Sep 2019	32,802	27,028	5,770	2,630	2,368	1,020	953	356	40	261	962	176	1,532	483	373	646	93	166	3,401					
Oct - Dec 2019	32,983	27,171	5,809	2,704	2,436	1,026	970	400	40	269	937	171	1,544	490	373	624	95	169	3,373					
Change on year	313	160	158	154	133	37	84	16	-3	21	44	-2	-24	13	30	-16	-13	39	25					
Change %	1.0	0.6	2.8	6.1	5.8	3.7	9.4	4.2	-8.1	8.6	4.9	-1.4	-1.5	2.8	8.7	-2.5	-11.7	29.9	0.7					
Nationality	MGTM	JF6F	JF6G	FSC8	EQ4U	JJR4	JJR6	EQ4V	FSC9	FSCE	FSD2	JJS4	FSD3	JJS8	JJT2	FSD4	JJR8	JJS6	EQ4W					
Oct - Dec 2017	32,230	28,726	3,500	2,430	2,335	1,007	959	361	9	95	266	63	508	177	86	296	91	89	1,165					
Oct - Dec 2018	32,671	29,098	3,569	2,400	2,274	1,011	869	370	24	126	277	64	593	194	107	299	96	71	1,295					
Jan - Mar 2019	32,641	28,943	3,698	2,513	2,381	1,018	925	423	16	132	273	71	597	182	115	315	101	75	1,317					
Apr - Jun 2019	32,752	29,084	3,661	2,490	2,368	1,019	952	375	22	122	289	63	567	187	121	314	78	95	1,292					
Jul - Sep 2019	32,802	29,209	3,589	2,367	2,238	981	903	333	21	129	297	56	599	210	126	326	68	107	1,351					
Oct - Dec 2019	32,983	29,325	3,654	2,439	2,310	994	931	367	17	129	298	68	602	199	126	316	75	107	1,344					
Change on year	313	227	85	39	36	-16	62	-2	-8	3	20	4	9	5	19	17	-21	36	49					
Change %	1.0	0.8	2.4	1.6	1.6	-1.6	7.2	-0.6	-31.4	2.4	7.3	6.7	1.6	2.5	18.0	5.6	-21.8	51.1	3.8					
Rates (aged 16 to 64)																								
Country of birth	LF9D	LFM6	LFM7	FSD5	EQ4Y	LFM8	LFM9	EQ4Z	FSD6	FSD7	FSD8	LFN4	FSD9	LFN6	LFN7	FSE2	LFN2	LFN5	EQ52					
Oct - Dec 2017	75.3	75.8	73.5	80.5	81.6	77.6	85.4	83.6	72.9	70.9	70.9	82.1	63.7	73.5	56.2	78.6	77.3	86.3	68.5					
Oct - Dec 2018	76.0	76.3	74.7	81.6	82.6	79.8	86.1	83.5	71.8	73.0	73.3	84.7	65.5	75.5	55.9	77.6	79.1	85.7	70.1					
Jan - Mar 2019	75.9	76.3	74.6	81.8	82.8	80.1	85.1	84.6	79.1	72.7	73.1	88.2	64.6	75.3	57.6	77.8	78.4	84.7	69.7					
Apr - Jun 2019	76.0	76.3	74.6	82.2	83.1	80.2	85.2	86.2	78.3	74.4	73.2	87.4	63.4	75.5	59.0	78.6	73.9	87.7	69.3					
Jul - Sep 2019	76.2	76.3	75.6	82.5	83.3	80.6	86.1	84.6	76.0	76.1	74.9	84.9	65.4	77.0	57.9	79.2	78.2	88.8	71.0					
Oct - Dec 2019	76.6	76.8	75.6	82.0	83.1	80.9	85.7	82.7	78.0	73.5	74.2	82.3	65.7	78.7	56.7	80.2	79.1	87.8	70.9					
Change on year	0.6	0.5	0.9	0.4	0.5	1.2	-0.4	-0.8	6.1	0.5	0.9	-2.5	0.2	3.2	0.7	2.6	0.0	2.1	0.8					
Nationality	LF9D	LFN8	LFN9	FSE3	EQ54	LFO2	LFO3	EQ55	FSE4	FSE5	FSE6	LFO6	FSE7	LFO8	LFO9	FSE8	LFO4	LFO7	EQ56					
Oct - Dec 2017	75.3	75.5	74.2	80.3	81.1	77.3	85.3	84.1	38.0	64.7	65.3	84.8	56.1	67.3	52.7	78.2	79.5	84.5	63.3					
Oct - Dec 2018	76.0	76.0	75.8	82.6	83.3	81.0	86.0	84.5	68.9	72.3	70.5	86.6	58.3	69.7	48.4	77.0	73.7	86.1	65.6					
Jan - Mar 2019	75.9	76.1	75.3	82.1	82.7	79.9	85.0	84.9	75.0	72.9	68.8	91.4	57.2	70.6	50.9	76.9	78.3	82.7	64.8					
Apr - Jun 2019	76.0	76.1	75.0	82.5	83.3	80.8	85.0	85.9	83.7	69.5	70.7	90.2	54.3	69.3	53.8	76.8	73.1	86.3	63.4					
Jul - Sep 2019	76.2	76.2	76.2	82.5	82.8	80.3	85.5	83.5	83.7	76.3	71.8	87.1	59.4	73.1	55.4	78.1	74.2	92.0	67.2					
Oct - Dec 2019	76.6	76.7	76.0	81.9	82.4	80.3	85.4	81.0	80.0	73.4	69.0	85.8	60.3	74.6	55.2	78.5	77.2	87.8	66.9					
Change on year	0.6	0.7	0.1	-0.7	-0.8	-0.6	-0.6	-3.6	11.1	1.1	-1.5	-0.9	2.0	4.9	6.8	1.6	3.5	1.7	1.3					

Source: Labour Force Survey

Labour market statistics enquiries: labour.market@ons.gov.uk

1. The total series includes people who do not state their country of birth or nationality. The total levels series MGTM does not therefore equal the sum of the "UK" and "Non-UK" series.

2. This series consists of all 27 EU member states excluding the UK. This series equals the sum of EU14, EU8, EU2 and Other EU.

3. Austria, Belgium, Denmark, Finland, France, Germany, Greece, Ireland, Italy, Luxembourg, Netherlands, Portugal, Spain and Sweden.

4. Czech Republic, Estonia, Hungary, Latvia, Lithuania, Poland, Slovak Republic and Slovenia.

5. Romania and Bulgaria.

6. Cyprus, Malta and Croatia.

7. Total Non-EU equals the sum of Other Europe, Total Africa, Total Asia and Total America and Oceania, and excludes the UK.

The estimates shown in this table relate to the number of people in employment and should not be used as a proxy for flows of foreign migrants into the UK.

NON-UK WORKERS

8(2) Unemployment and economic inactivity levels and rates by country of birth and nationality

United Kingdom (thousands of people) not seasonally adjusted

(first published on 18 February 2020)

	Unemployment (all aged 16 and over)					Economically inactive (all aged from 16 to 64)									
	Total ¹	UK	Non-UK	EU27 ²	Non-EU ³	Total ¹	UK		Non-UK		EU27 ²		Non-EU ³		
						All economically inactive	Of which: Students ⁴	All economically inactive	Of which: Students ⁴	All economically inactive	Of which: Students ⁴	All economically inactive	Of which: Students ⁴	All economically inactive	Of which: Students ⁴
Levels (thousands of people)															
By country of birth	MGTP	DSWD	DT35	DT3F	DTKB	LF9L	LF9W	DTLK	DYUP	DYUR	DYVR	DYVZ	DYWL	DYWR	DZ37
Oct - Dec 2017	1,425	1,142	283	78	205	8,751	2,318	7,055	1,807	1,685	511	450	174	1,234	337
Oct - Dec 2018	1,328	1,068	260	78	182	8,598	2,228	6,957	1,757	1,623	470	399	161	1,224	309
Jan - Mar 2019	1,292	1,013	279	84	195	8,663	2,373	6,992	1,851	1,654	521	409	159	1,245	362
Apr - Jun 2019	1,296	1,015	280	74	206	8,659	2,350	7,006	1,864	1,640	485	414	159	1,226	327
Jul - Sep 2019	1,374	1,115	259	72	187	8,503	2,089	6,933	1,687	1,556	401	395	125	1,161	276
Oct - Dec 2019	1,268	1,030	237	85	152	8,450	2,223	6,844	1,769	1,596	455	403	130	1,193	325
Change on year	-60	-37	-23	7	-29	-148	-5	-113	11	-28	-15	4	-31	-31	16
Change %	-4.5	-3.5	-8.7	8.7	-16.2	-1.7	-0.2	-1.6	0.6	-1.7	-3.2	0.9	-19.5	-2.5	5.3
By nationality	MGTP	DSWE	DT39	DTG9	DTKC	LF9L	LF9W	DYTC	DYUQ	DYUS	DYVU	DYWA	DYWM	DYWS	DZGD
Oct - Dec 2017	1,425	1,240	184	90	94	8,751	2,318	7,716	1,946	1,021	371	447	182	574	189
Oct - Dec 2018	1,328	1,154	173	76	97	8,598	2,228	7,630	1,892	954	335	377	165	577	170
Jan - Mar 2019	1,292	1,107	185	86	99	8,663	2,373	7,631	1,982	1,018	390	409	166	609	223
Apr - Jun 2019	1,296	1,110	186	71	114	8,659	2,350	7,621	1,981	1,023	366	399	162	624	204
Jul - Sep 2019	1,374	1,206	168	76	92	8,503	2,089	7,546	1,801	940	287	382	125	558	162
Oct - Dec 2019	1,268	1,102	165	87	79	8,450	2,223	7,456	1,900	976	323	398	143	578	180
Change on year	-60	-52	-8	11	-19	-148	-5	-174	7	22	-12	21	-21	1	9
Change %	-4.5	-4.5	-4.7	14.0	-19.3	-1.7	-0.2	-2.3	0.4	2.3	-3.6	5.7	-13.0	0.2	5.5
Rates (%)															
By country of birth	MGUK	DT2W	DT3B	DTJG	DTKD	CRZK		DYTD		DYUT		DYWD		DYWT	
Oct - Dec 2017	4.2	4.1	4.8	3.2	6.0	21.2		20.9		22.7		15.7		27.1	
Oct - Dec 2018	3.9	3.8	4.4	3.3	5.1	20.8		20.6		21.9		14.6		26.1	
Jan - Mar 2019	3.8	3.6	4.6	3.4	5.5	21.0		20.8		21.8		14.3		26.3	
Apr - Jun 2019	3.8	3.6	4.6	2.9	5.8	21.0		20.8		21.7		14.4		26.3	
Jul - Sep 2019	4.0	4.0	4.3	3.0	5.2	20.6		20.5		20.9		14.1		25.0	
Oct - Dec 2019	3.7	3.7	3.9	3.4	4.3	20.4		20.2		21.3		14.0		25.9	
Change on year	-0.2	-0.1	-0.5	0.1	-0.8	-0.4		-0.4		-0.6		-0.6		-0.3	
By nationality	MGUK	DT2Z	DT3D	DTKA	DTLH	CRZK		DYUO		DYUU		DYWE		DZ36	
Oct - Dec 2017	4.2	4.1	5.0	3.7	7.5	21.2		21.1		21.9		15.7		31.6	
Oct - Dec 2018	3.9	3.8	4.6	3.2	7.0	20.8		20.8		20.5		14.0		29.5	
Jan - Mar 2019	3.8	3.7	4.8	3.5	7.0	21.0		20.9		21.0		14.4		30.3	
Apr - Jun 2019	3.8	3.7	4.8	2.9	8.1	21.0		20.9		21.2		14.2		31.0	
Jul - Sep 2019	4.0	4.0	4.5	3.3	6.4	20.6		20.6		20.2		14.4		28.1	
Oct - Dec 2019	3.7	3.6	4.3	3.6	5.5	20.4		20.4		20.6		14.4		29.1	
Change on year	-0.2	-0.2	-0.3	0.4	-1.5	-0.4		-0.5		0.1		0.5		-0.4	

Source: Labour Force Survey
Labour market statistics enquiries: labour.market@ons.gov.uk

1. The total series includes people who do not state their country of birth or nationality. The total levels series therefore do not equal the sum of the "UK" and "Non-UK" series.
2. This series consists of all 27 EU member states excluding the UK.
3. This series consists of all countries outside the EU excluding the UK.
4. This series consists of those people whose main reason for being economically inactive was because they were students. It does not include all students as some students will be included in employment and unemployment estimates.

UNEMPLOYMENT

9(1) Unemployment by age and duration

United Kingdom (thousands) seasonally adjusted

	All aged 16 & over							All aged 16 - 64						
	All	Rate (%) ¹	Up to 6 months	Over 6 and up to 12 months	All over 12 months	% over 12 months	All over 24 months	All	Rate (%) ¹	Up to 6 months	Over 6 and up to 12 months	All over 12 months	% over 12 months	All over 24 months
	1	2	3	4	5	6	7	8	9	10	11	12	13	14
People	MGSC	MGSX	YBWF	YBWG	YBWH	YBWI	YBWL	LF2I	LF2Q	LF2Y	LF32	LF34	LF36	LF38
Nov-Jan 2018	1,451	4.3	839	247	364	25.1	188	1,434	4.4	825	243	365	25.4	187
Nov-Jan 2019	1,338	3.9	786	205	347	25.9	169	1,317	4.0	772	202	344	26.1	166
Feb-Apr 2019	1,304	3.8	779	178	347	26.6	168	1,287	3.9	773	177	337	26.2	163
May-Jul 2019	1,294	3.8	786	180	327	25.3	171	1,280	3.9	782	179	320	25.0	167
Aug-Oct 2019	1,281	3.8	782	191	308	24.0	158	1,256	3.8	771	187	299	23.8	151
Nov-Jan 2020	1,343	3.9	825	212	306	22.8	165	1,311	4.0	810	201	300	22.9	156
Change on quart	63	0.2	44	20	-1	-1.2	7	55	0.1	40	14	1	-0.9	6
Change %	4.9		5.6	10.7	-0.5		4.5	4.4		5.2	7.6	0.4		3.8
Change on year	5	0.0	39	6	-40	-3.1	-5	-6	0.0	39	-1	-44	-3.2	-9
Change %	0.4		5.0	3.0	-11.7		-2.7	-0.5		5.0	-0.4	-12.8		-5.6
Men	MGSD	MGSY	MGYK	MGYM	MGYO	YBWJ	YBWM	YBSI	YBTJ	YBWP	YBWS	YBWW	YBWW	YBWB
Nov-Jan 2018	755	4.2	399	142	214	28.4	120	741	4.3	388	138	214	28.9	119
Nov-Jan 2019	728	4.0	396	120	212	29.1	111	716	4.1	389	118	209	29.2	108
Feb-Apr 2019	719	4.0	401	103	214	29.8	107	709	4.1	399	102	208	29.3	106
May-Jul 2019	710	4.0	402	106	202	28.5	110	701	4.1	399	105	197	28.1	107
Aug-Oct 2019	715	4.0	413	108	193	27.0	102	699	4.1	407	104	188	26.9	98
Nov-Jan 2020	748	4.1	445	123	180	24.1	96	725	4.2	435	112	178	24.5	92
Change on quart	33	0.2	32	14	-13	-2.9	-6	26	0.1	28	8	-10	-2.4	-6
Change %	4.7		7.6	13.2	-6.5		-5.8	3.8		6.9	7.8	-5.3		-6.5
Change on year	20	0.1	49	2	-31	-4.9	-16	9	0.0	46	-6	-31	-4.7	-17
Change %	2.7		12.4	1.8	-14.7		-14.0	1.3		11.9	-4.8	-14.9		-15.4
Women	MGSE	MGSZ	MGYL	MGYN	MGYO	YBWK	YBWN	LF2J	LF2R	LF2Z	LF33	LF35	LF37	LF39
Nov-Jan 2018	696	4.4	441	105	149	21.5	68	693	4.5	438	105	150	21.7	68
Nov-Jan 2019	611	3.8	390	85	135	22.1	58	602	3.9	383	84	135	22.4	58
Feb-Apr 2019	586	3.7	377	75	133	22.7	61	578	3.7	374	75	129	22.3	57
May-Jul 2019	583	3.6	385	74	125	21.4	61	579	3.7	382	74	123	21.3	60
Aug-Oct 2019	566	3.5	368	83	115	20.3	56	557	3.6	364	83	111	19.9	53
Nov-Jan 2020	595	3.7	380	89	126	21.2	69	586	3.7	376	89	122	20.8	65
Change on quart	29	0.1	12	6	11	0.9	13	29	0.2	12	6	11	0.9	12
Change %	5.2		3.3	7.3	9.7		23.4	5.2		3.2	7.3	10.1		22.9
Change on year	-15	-0.2	-10	4	-9	-1.0	11	-15	-0.1	-7	5	-13	-1.6	7
Change %	-2.5		-2.5	4.7	-6.8		19.0	-2.6		-2.0	5.7	-9.5		12.7

	16-17							18-24						
	All	Rate (%) ¹	Up to 6 months	Over 6 and up to 12 months	All over 12 months	% over 12 months	All over 24 months	All	Rate (%) ¹	Up to 6 months	Over 6 and up to 12 months	All over 12 months	% over 12 months	All over 24 months
	15	16	17	18	19	20	21	22	23	24	25	26	27	28
People	YBVH	YBVK	YBXD	YBXG	YBXJ	YBXM	YBXP	YBVN	YBVQ	YBXS	YBXV	YBXY	YBYB	YBYE
Nov-Jan 2018	125	27.1	95	23	7	5.5	*	410	10.5	279	62	69	16.8	24
Nov-Jan 2019	91	22.2	73	12	6	6.3	*	409	10.4	272	65	73	17.8	20
Feb-Apr 2019	86	20.3	68	10	8	9.5	*	394	10.2	269	60	65	16.5	14
May-Jul 2019	84	19.3	63	16	5	5.8	*	404	10.5	275	56	72	17.8	21
Aug-Oct 2019	87	20.0	70	13	*	*	*	386	10.2	266	58	61	15.9	16
Nov-Jan 2020	96	22.1	77	14	5	5.5	*	410	10.5	278	67	66	16.0	22
Change on quart	9	2.1	7	1	*	*	*	24	0.4	12	9	4	0.1	5
Change %	10.6		9.9	7.1	*	*	*	6.3		4.4	14.8	6.7		33.2
Change on year	6	0.0	5	1	0	-0.8	*	1	0.2	6	2	-7	-1.8	2
Change %	6.2		6.5	10.8	-7.2		*	0.2		2.1	3.7	-9.9		10.8
Men	YBVI	YBVL	YBXE	YBXH	YBKK	YBXN	YBXQ	YBVO	YBVR	YBXT	YBXW	YBZX	YBYC	YBYF
Nov-Jan 2018	62	27.6	46	14	*	*	*	231	11.4	144	41	46	19.8	19
Nov-Jan 2019	48	23.6	37	6	5	9.6	*	250	12.0	158	40	52	20.7	16
Feb-Apr 2019	45	22.1	36	*	5	10.8	*	248	12.3	163	41	44	17.7	11
May-Jul 2019	46	22.0	34	8	*	*	*	246	12.3	155	41	50	20.4	15
Aug-Oct 2019	52	25.1	43	7	*	*	*	225	11.3	144	37	44	19.6	11
Nov-Jan 2020	56	27.5	45	7	*	*	*	242	11.9	158	42	42	17.2	13
Change on quart	4	2.4	2	0	*	*	*	17	0.6	14	6	-3	-2.4	2
Change %	6.8		5.7	-3.5	*	*	*	7.4		9.5	15.0	-5.7		16.9
Change on year	8	3.8	8	0	*	*	*	-8	-0.2	0	2	-10	-3.6	-3
Change %	17.5		23.2	7.4	*	*	*	-3.2		0.1	5.3	-19.7		-19.1
Women	YBVJ	YBVM	YBXF	YBXI	YBXL	YBXO	YBXR	YBVP	YBVS	YBXU	YBXX	YBYA	YBYD	YBYG
Nov-Jan 2018	63	26.7	49	9	5	7.6	*	178	9.5	134	21	23	13.0	5
Nov-Jan 2019	43	20.8	36	6	*	*	*	159	8.5	114	24	21	13.2	*
Feb-Apr 2019	41	18.6	32	5	*	*	*	146	7.9	106	19	21	14.5	*
May-Jul 2019	37	16.7	29	7	*	*	*	158	8.6	121	16	22	13.8	6
Aug-Oct 2019	35	15.3	28	6	*	*	*	160	8.9	121	22	17	10.8	5
Nov-Jan 2020	40	17.4	32	7	*	*	*	168	9.1	119	25	24	14.3	9
Change on quart	6	2.1	5	1	*	*	*	8	0.2	-2	3	7	3.4	4
Change %	16.3		16.3	20.9	*	*	*	4.9		-1.6	14.6	38.2		67.0
Change on year	-3	-3.3	-4	1	*	*	*	9	0.6	6	0	3	1.1	*
Change %	-6.4		-10.5	14.4	*	*	*	5.5		4.9	1.1	14.3		*

Relationship between columns: 1=3+4+5; 8=10+11+12; 15=17+18+19; 22=24+25+26.

¹Denominator = economically active for that age group.

Source: Labour Force Survey

Labour market statistics enquiries: labour.market@ons.gov.uk

UNEMPLOYMENT

9(2) Unemployment by age and duration

United Kingdom (thousands) seasonally adjusted

	25-49							50 and over										
	All		Rate(%) ¹		Up to 6 months	Over 6 and up to 12 months	All over 12 months	% over 12 months	All over 24 months	All		Rate(%) ¹		Up to 6 months	Over 6 and up to 12 months	All over 12 months	% over 12 months	All over 24 months
	1	2	3	4	5	6	7	8	9	10	11	12	13	14				
People	MGVI	MGXB	YBYH	YBYK	YBYN	YBYQ	YBYT	YBVT	YBVW	YBYW	YBYZ	YBZC	YBZF	YBZI				
Nov-Jan 2018	612	3.2	328	110	175	28.5	88	303	2.9	138	52	114	37.4	75				
Nov-Jan 2019	546	2.9	306	85	154	28.3	84	293	2.7	136	43	114	38.8	66				
Feb-Apr 2019	544	2.9	314	71	159	29.3	87	280	2.6	128	38	115	41.0	67				
May-Jul 2019	534	2.8	313	69	152	28.5	86	272	2.5	135	40	98	36.0	62				
Aug-Oct 2019	517	2.7	300	76	140	27.2	74	291	2.7	145	44	102	35.0	67				
Nov-Jan 2020	534	2.8	320	81	133	25.0	75	302	2.8	150	50	102	33.7	69				
Change on quarter	18	0.1	20	5	-7	-2.2	1	11	0.1	5	6	0	-1.3	2				
Change %	3.5		6.7	6.3	-5.0		0.9	3.8		3.5	13.6	0.0		2.4				
Change on year	-11	-0.1	14	-5	-21	-3.3	-9	10	0.0	14	7	-12	-5.1	3				
Change %	-2.1		4.7	-5.4	-13.6		-10.6	3.3		10.5	16.2	-10.4		4.5				
Men	MGVJ	MGXC	YBYI	YBYL	YBYO	YBYR	YBYU	YBVU	YBVX	YBYX	YBZA	YBZD	YBZG	YBZJ				
Nov-Jan 2018	287	2.9	140	55	93	32.2	50	174	3.1	68	32	74	42.5	50				
Nov-Jan 2019	265	2.6	130	48	86	32.5	57	165	2.9	71	25	69	41.7	38				
Feb-Apr 2019	268	2.7	142	36	91	33.8	56	157	2.7	61	22	74	47.4	40				
May-Jul 2019	267	2.7	145	33	89	33.4	53	151	2.6	68	24	59	39.0	41				
Aug-Oct 2019	262	2.6	144	36	82	31.3	47	175	3.0	83	28	64	36.7	44				
Nov-Jan 2020	276	2.7	162	40	73	26.6	41	174	3.0	80	33	61	35.3	42				
Change on quarter	14	0.1	19	4	-9	-4.8	-6	-1	0.0	-3	5	-3	-1.3	-2				
Change %	5.4		13.0	11.9	-10.6		-12.3	-0.7		-3.9	16.9	-4.3		-4.7				
Change on year	11	0.1	32	-8	-13	-5.9	-16	9	0.1	8	8	-8	-6.4	4				
Change %	4.1		24.5	-16.8	-14.9		-27.6	5.2		11.8	30.6	-10.9		10.2				
Women	MGVK	MGXD	YBYJ	YBYM	YBYP	YBYS	YBYV	YBVV	YBVY	YBYW	YBZB	YBZE	YBZH	YBZK				
Nov-Jan 2018	325	3.6	188	55	82	25.2	38	129	2.7	70	20	39	30.6	25				
Nov-Jan 2019	281	3.2	176	37	68	24.3	27	127	2.5	65	18	45	35.1	28				
Feb-Apr 2019	275	3.1	172	35	68	24.8	31	124	2.4	67	16	41	32.9	27				
May-Jul 2019	267	3.0	168	35	63	23.6	33	121	2.4	66	16	39	32.4	21				
Aug-Oct 2019	255	2.9	157	40	58	22.9	27	116	2.3	62	16	38	32.5	23				
Nov-Jan 2020	259	2.9	158	40	60	23.3	34	128	2.5	71	17	40	31.5	27				
Change on quarter	4	0.0	1	1	2	0.3	6	12	0.2	8	1	3	-1.0	4				
Change %	1.4		0.9	1.3	2.9		23.6	10.7		13.4	7.8	7.5		16.0				
Change on year	-22	-0.3	-18	4	-8	-1.1	7	1	-0.1	6	-1	-4	-3.6	-1				
Change %	-7.9		-10.0	9.7	-12.0		25.1	0.7		9.1	-3.9	-9.5		-3.3				

Relationship between columns: 1=3+4+5; 8=10+11+12.

¹Denominator = economically active for that age group.

Source: Labour Force Survey

Labour market statistics enquiries: labour.market@ons.gov.uk

ECONOMIC ACTIVITY AND INACTIVITY

10 Economic activity by age

United Kingdom (thousands) seasonally adjusted

	All aged 16 & over	16 - 64	16 - 17	18 - 24	25 - 34	35 - 49	50 - 64	65+
	1	2	3	4	5	6	7	8
Economically active								
People	MGSF	LF2K	YBZL	YBZO	YBZR	YBZU	LF3A	LFK8
Nov-Jan 2018	33,692	32,461	463	3,890	7,744	11,185	9,181	1,231
Nov-Jan 2019	34,052	32,742	409	3,949	7,792	11,181	9,411	1,310
Feb-Apr 2019	34,050	32,730	425	3,864	7,815	11,165	9,461	1,321
May-Jul 2019	34,071	32,743	435	3,834	7,822	11,137	9,517	1,327
Aug-Oct 2019	34,082	32,749	435	3,796	7,848	11,152	9,517	1,333
Nov-Jan 2020	34,328	32,949	435	3,892	7,873	11,172	9,577	1,380
Change on quarter	246	200	-1	96	25	20	60	47
Change %	0.7	0.6	-0.1	2.5	0.3	0.2	0.6	3.5
Change on year	276	206	26	-57	81	-10	167	70
Change %	0.8	0.6	6.3	-1.5	1.0	-0.1	1.8	5.3
Men	MGSG	YBSL	YBZM	YBZP	YBZS	YBZV	YBZY	YCAE
Nov-Jan 2018	17,846	17,076	224	2,021	4,150	5,873	4,807	771
Nov-Jan 2019	18,045	17,248	202	2,077	4,183	5,881	4,904	797
Feb-Apr 2019	18,009	17,209	205	2,012	4,196	5,872	4,924	800
May-Jul 2019	17,971	17,198	210	1,991	4,191	5,866	4,940	773
Aug-Oct 2019	18,029	17,236	209	1,993	4,197	5,878	4,959	793
Nov-Jan 2020	18,075	17,290	204	2,040	4,206	5,859	4,981	784
Change on quarter	45	54	-5	48	9	-19	22	-8
Change %	0.3	0.3	-2.5	2.4	0.2	-0.3	0.4	-1.1
Change on year	29	42	2	-37	22	-22	77	-13
Change %	0.2	0.2	1.1	-1.8	0.5	-0.4	1.6	-1.6
Women	MGSH	LF2L	YBZN	YBZQ	YBZT	YBZW	LF3B	LFK9
Nov-Jan 2018	15,846	15,385	238	1,868	3,594	5,312	4,373	460
Nov-Jan 2019	16,007	15,494	207	1,872	3,609	5,300	4,506	513
Feb-Apr 2019	16,042	15,521	220	1,853	3,619	5,292	4,537	521
May-Jul 2019	16,100	15,545	224	1,843	3,630	5,271	4,576	555
Aug-Oct 2019	16,053	15,513	226	1,803	3,651	5,274	4,558	540
Nov-Jan 2020	16,254	15,658	231	1,852	3,667	5,313	4,596	595
Change on quarter	201	146	5	48	16	39	38	55
Change %	1.3	0.9	2.1	2.7	0.4	0.7	0.8	10.2
Change on year	247	164	24	-21	59	13	90	82
Change %	1.5	1.1	11.4	-1.1	1.6	0.2	2.0	16.1
Economic activity rates (%)¹								
People	MGWG	LF22	YCAG	YCAJ	YCAM	YCAP	LF2C	LFL2
Nov-Jan 2018	63.7	78.8	32.8	69.1	87.0	87.4	73.7	10.5
Nov-Jan 2019	64.1	79.3	29.4	71.1	87.1	87.7	74.4	11.0
Feb-Apr 2019	64.0	79.2	30.5	69.8	87.3	87.6	74.6	11.1
May-Jul 2019	63.9	79.2	31.2	69.5	87.3	87.5	74.7	11.1
Aug-Oct 2019	63.9	79.2	31.1	69.1	87.6	87.6	74.5	11.1
Nov-Jan 2020	64.2	79.6	30.8	71.1	87.9	87.8	74.7	11.4
Change on quarter	0.4	0.4	-0.2	2.0	0.3	0.2	0.2	0.3
Change on year	0.2	0.3	1.5	0.0	0.8	0.1	0.3	0.4
Men	MGWH	MGSP	YCAH	YCAK	YCAN	YCAQ	MGWQ	MGWT
Nov-Jan 2018	69.0	83.4	31.1	70.3	93.2	92.9	78.6	14.3
Nov-Jan 2019	69.4	84.0	28.3	73.2	93.2	93.4	79.1	14.5
Feb-Apr 2019	69.1	83.7	28.8	71.1	93.3	93.4	79.1	14.5
May-Jul 2019	68.9	83.6	29.5	70.7	93.1	93.3	79.1	14.0
Aug-Oct 2019	69.0	83.8	29.2	71.0	93.2	93.5	79.2	14.3
Nov-Jan 2020	69.1	84.0	28.3	73.0	93.4	93.2	79.3	14.1
Change on quarter	0.1	0.2	-0.9	2.0	0.2	-0.3	0.1	-0.2
Change on year	-0.3	0.0	0.0	-0.2	0.1	-0.2	0.2	-0.5
Women	MGWI	LF23	YCAI	YCAL	YCAO	YCAR	LF2D	LFL3
Nov-Jan 2018	58.6	74.2	34.6	67.8	80.7	81.9	68.9	7.3
Nov-Jan 2019	59.0	74.7	30.5	68.9	81.0	82.1	70.0	8.0
Feb-Apr 2019	59.0	74.8	32.4	68.4	81.2	82.1	70.2	8.1
May-Jul 2019	59.2	74.8	33.0	68.3	81.4	81.8	70.5	8.6
Aug-Oct 2019	58.9	74.7	33.1	67.1	81.9	81.9	70.0	8.4
Nov-Jan 2020	59.6	75.3	33.5	69.1	82.4	82.5	70.4	9.2
Change on quarter	0.7	0.7	0.5	2.0	0.4	0.6	0.4	0.8
Change on year	0.6	0.7	3.1	0.3	1.4	0.4	0.4	1.2

Relationship between columns: 1= 2+8; 2=3+4+5+6+7.

¹Denominator = all persons in the relevant age group.

Data source: Labour Force Survey

Labour market statistics enquiries: labour.market@ons.gov.uk

ECONOMIC ACTIVITY AND INACTIVITY

11 Economic inactivity: reasons

United Kingdom (thousands) seasonally adjusted

	Total aged 16-64									
	Economic inactivity by reason (aged 16 to 64)								Wanting/not wanting a job (aged 16 to 64)	
	Student	Looking after family / home	Temp sick	Long-term sick	Discouraged workers	Retired	Other	Does not want job	Wants a job ¹	
	1	2	3	4	5	6	7	8	9	10
	LF2M	LF63	LF65	LF67	LF69	LFL8	LF6B	LF6D	LFL9	LFM2
People										
Nov-Jan 2018	8,742	2,354	2,084	205	1,987	36	1,156	921	6,720	2,023
Nov-Jan 2019	8,549	2,257	2,005	173	2,006	33	1,089	985	6,733	1,816
Feb-Apr 2019	8,581	2,260	2,047	175	1,971	32	1,112	985	6,757	1,823
May-Jul 2019	8,587	2,241	1,999	164	2,048	40	1,101	995	6,712	1,875
Aug-Oct 2019	8,606	2,280	1,966	174	2,072	32	1,117	965	6,767	1,839
Nov-Jan 2020	8,431	2,186	1,868	178	2,120	31	1,111	937	6,560	1,871
Change on quarter	-175	-95	-98	3	48	0	-6	-27	-207	32
Change %	-2.0	-4.2	-5.0	1.9	2.3	-1.4	-0.5	-2.8	-3.1	1.7
Change on year	-118	-72	-137	4	114	-2	21	-47	-173	55
Change %	-1.4	-3.2	-6.8	2.6	5.7	-5.1	2.0	-4.8	-2.6	3.0
Men	YBSO	BEEEX	BEAQ	BEDI	BEDL	YCFP	BEDR	BEDU	YBWA	YBWD
Nov-Jan 2018	3,406	1,180	252	102	961	22	469	421	2,558	848
Nov-Jan 2019	3,290	1,141	215	87	951	21	477	398	2,547	743
Feb-Apr 2019	3,341	1,156	234	93	930	23	497	409	2,607	734
May-Jul 2019	3,364	1,135	226	72	964	24	506	437	2,591	772
Aug-Oct 2019	3,340	1,142	235	75	961	18	506	403	2,590	750
Nov-Jan 2020	3,300	1,103	225	78	981	20	501	394	2,520	780
Change on quarter	-39	-39	-11	3	20	2	-5	-10	-70	30
Change %	-1.2	-3.4	-4.5	3.8	2.0	10.5	-1.0	-2.4	-2.7	4.0
Change on year	11	-38	10	-10	29	-1	24	-4	-27	37
Change %	0.3	-3.3	4.7	-11.0	3.1	-3.7	5.1	-1.1	-1.0	5.0
Women	LF2N	LF64	LF66	LF68	LF6A	LFM3	LF6C	LF6E	LFM4	LFM5
Nov-Jan 2018	5,337	1,175	1,832	103	1,026	14	687	500	4,162	1,174
Nov-Jan 2019	5,259	1,116	1,790	86	1,054	12	613	587	4,186	1,073
Feb-Apr 2019	5,240	1,104	1,813	82	1,040	9	615	576	4,151	1,089
May-Jul 2019	5,223	1,106	1,773	91	1,084	16	595	558	4,120	1,103
Aug-Oct 2019	5,266	1,139	1,731	100	1,111	14	611	561	4,177	1,089
Nov-Jan 2020	5,130	1,083	1,643	100	1,139	12	610	544	4,040	1,091
Change on quarter	-136	-56	-88	1	28	-2	-1	-18	-137	1
Change %	-2.6	-4.9	-5.1	0.5	2.5	-16.8	-0.1	-3.2	-3.3	0.1
Change on year	-129	-33	-147	14	84	-1	-3	-43	-146	18
Change %	-2.4	-3.0	-8.2	16.4	8.0	-7.4	-0.5	-7.3	-3.5	1.7
Percentage of economically inactive aged from 16 to 64 (%)										
People	LF6V	LF6X	LF6Z	LF73	LF75	LF77	LF79	LF7B	LF7D	LF7F
Nov-Jan 2018	100	26.9	23.8	2.3	22.7	0.4	13.2	10.5	76.9	23.1
Nov-Jan 2019	100	26.4	23.5	2.0	23.5	0.4	12.7	11.5	78.8	21.2
Feb-Apr 2019	100	26.3	23.9	2.0	23.0	0.4	13.0	11.5	78.8	21.2
May-Jul 2019	100	26.1	23.3	1.9	23.8	0.5	12.8	11.6	78.2	21.8
Aug-Oct 2019	100	26.5	22.8	2.0	24.1	0.4	13.0	11.2	78.6	21.4
Nov-Jan 2020	100	25.9	22.2	2.1	25.1	0.4	13.2	11.1	77.8	22.2
Men	BEBP	BEEH	BEEK	BEEN	BEEQ	BEET	BEEW	BEEZ	BEAS	BEGT
Nov-Jan 2018	100	34.6	7.4	3.0	28.2	0.6	13.8	12.4	75.1	24.9
Nov-Jan 2019	100	34.7	6.5	2.7	28.9	0.6	14.5	12.1	77.4	22.6
Feb-Apr 2019	100	34.6	7.0	2.8	27.9	0.7	14.9	12.2	78.0	22.0
May-Jul 2019	100	33.7	6.7	2.1	28.7	0.7	15.0	13.0	77.0	23.0
Aug-Oct 2019	100	34.2	7.0	2.2	28.8	0.5	15.1	12.1	77.5	22.5
Nov-Jan 2020	100	33.4	6.8	2.4	29.7	0.6	15.2	11.9	76.4	23.6
Women	LF6W	LF6Y	LF72	LF74	LF76	LF78	LF7A	LF7C	LF7E	LF7G
Nov-Jan 2018	100	22.0	34.3	1.9	19.2	0.3	12.9	9.4	78.0	22.0
Nov-Jan 2019	100	21.2	34.0	1.6	20.1	0.2	11.7	11.2	79.6	20.4
Feb-Apr 2019	100	21.1	34.6	1.6	19.9	0.2	11.7	11.0	79.2	20.8
May-Jul 2019	100	21.2	33.9	1.7	20.7	0.3	11.4	10.7	78.9	21.1
Aug-Oct 2019	100	21.6	32.9	1.9	21.1	0.3	11.6	10.7	79.3	20.7
Nov-Jan 2020	100	21.1	32.0	2.0	22.2	0.2	11.9	10.6	78.7	21.3

Relationship between columns : 1=2+3+4+5+6+7+8; 1=9+10.

Data Source: Labour Force Survey.

Labour market statistics enquiries: labour.market@ons.gov.uk

1. This series comprises those who say they would like a regular paid job, but who do not meet the internationally agreed definition of unemployment because they have not been looking for work in the last four weeks and/or they were unable to start working within two weeks.

ECONOMIC ACTIVITY AND INACTIVITY

12 Educational status, economic activity and inactivity of people aged from 16 to 24

November - January 2020

United Kingdom (thousands) seasonally adjusted

	All aged 16 to 24				In full-time education (FTE)				Not in full-time education (FTE) ¹			
	Total	Employed	Unemployed	Economically inactive	Total	Employed ²	Unemployed ²	Economically inactive	Total	Employed	Unemployed	Economically inactive
	1	2	3	4	5	6	7	8	9	10	11	12
Levels												
People												
16-17	1,410	339	96	975	1,221	263	60	898	189	75	36	78
18-24	5,475	3,482	410	1,583	1,752	621	86	1,045	3,723	2,861	324	538
16-24	6,885	3,820	506	2,559	2,973	884	146	1,943	3,912	2,936	360	616
Men												
16-17	722	148	56	518	611	104	32	475	111	44	24	43
18-24	2,796	1,798	242	755	829	269	42	518	1,967	1,529	200	238
16-24	3,518	1,946	298	1,274	1,440	373	74	993	2,078	1,573	224	281
Women												
16-17	688	190	40	457	609	159	28	423	78	31	12	35
18-24	2,679	1,683	168	828	923	352	44	527	1,756	1,332	124	300
16-24	3,367	1,874	208	1,285	1,533	511	72	950	1,834	1,363	136	335
Changes on quarter												
People												
16-17	9	-10	9	10	27	8	5	14	-18	-18	4	-4
18-24	-20	71	24	-116	-65	28	15	-108	45	43	10	-8
16-24	-11	61	34	-106	-38	36	20	-94	27	25	14	-12
Men												
16-17	5	-9	4	10	6	-4	3	7	-2	-5	1	3
18-24	-10	31	17	-58	-37	12	12	-61	26	19	5	3
16-24	-6	22	20	-48	-30	8	15	-54	25	14	5	6
Women												
16-17	5	-1	6	0	21	12	2	7	-16	-13	4	-7
18-24	-10	40	8	-58	-28	16	3	-47	18	24	5	-11
16-24	-5	39	13	-58	-7	28	5	-40	2	11	9	-18
Rates(%)³												
People												
16-17		24.0	22.1	69.2		21.5	18.6	73.5		39.9	32.4	41.0
18-24		63.6	10.5	28.9		35.4	12.2	59.6		76.8	10.2	14.5
16-24		55.5	11.7	37.2		29.7	14.2	65.3		75.1	10.9	15.7
Men												
16-17		20.5	27.5	71.7		17.0	23.7	77.7		39.8	35.0	38.8
18-24		64.3	11.9	27.0		32.5	13.5	62.5		77.7	11.6	12.1
16-24		55.3	13.3	36.2		25.9	16.6	68.9		75.7	12.5	13.5
Women												
16-17		27.7	17.4	66.5		26.1	14.9	69.3		40.0	28.2	44.3
18-24		62.8	9.1	30.9		38.1	11.2	57.1		75.8	8.5	17.1
16-24		55.7	10.0	38.2		33.3	12.4	62.0		74.3	9.1	18.3
Changes on quarter												
People												
16-17		-0.9	2.1	0.2		0.2	0.8	-0.5		-5.2	7.0	1.4
18-24		1.5	0.4	-2.0		2.8	1.5	-3.8		0.2	0.1	-0.4
16-24		1.0	0.5	-1.5		1.6	1.2	-2.3		0.1	0.3	-0.4
Men												
16-17		-1.4	2.4	0.9		-0.8	2.2	0.4		-3.8	3.1	2.8
18-24		1.3	0.6	-2.0		2.8	3.1	-4.4		-0.1	0.1	0.0
16-24		0.7	0.7	-1.3		1.1	2.6	-2.2		-0.2	0.2	0.1
Women												
16-17		-0.3	2.1	-0.5		1.1	0.0	-1.3		-6.8	11.8	0.3
18-24		1.7	0.2	-2.0		2.8	0.2	-3.2		0.6	0.2	-0.8
16-24		1.3	0.4	-1.7		2.0	0.1	-2.3		0.5	0.5	-1.0

Relationship between columns: 1=5+9; 2=6+10; 3=7+11.

Source: Labour Force Survey
Labour market statistics enquiries: labour.market@ons.gov.uk

1. Not in full-time education includes people in part-time education and/or some form of training. Estimates of the number of young people who were not in employment, education or training ("NEET") cannot therefore be derived from this table. Estimates of young people who were NEET are published separately at:

<https://www.ons.gov.uk/employmentandlabourmarket/peopleinwork/unemployment/bulletins/youngpeoplenotinfulltimeeducationemploymentortrainingneet/latest>

2. People in full-time education are employed if they have a part-time job or unemployed if they are looking for part-time employment.

3. Denominator = all persons in the relevant age group for economically active, total in employment and economically inactive; economically active for unemployment.

EARNINGS

13 Average Weekly Earnings (nominal) - total pay¹

Standard Industrial Classification (2007)

Great Britain, seasonally adjusted

	Whole Economy (100%) ²			Private sector (82%) ²			Public sector (18%) ²		
	Weekly Earnings (£)	% changes year on year		Weekly Earnings (£)	% changes year on year		Weekly Earnings (£)	% changes year on year	
		Single month	3 month average ³		Single month	3 month average ³		Single month	3 month average ³
	KAB9	KAC2	KAC3	KAC4	KAC5	KAC6	KAC7	KAC8	KAC9
Jan 18	511	2.7	2.7	509	2.8	2.9	519	2.3	2.0
Nov 18 (r)	526	3.3	3.4	525	3.3	3.5	531	2.9	2.7
Dec 18	529	3.3	3.6	528	3.5 (r)	3.8	532	2.8	2.8
Jan 19 (r)	530	3.8	3.5	530	4.1	3.6	533	2.8	2.8
Feb 19	530	3.4	3.5	529	3.7	3.7	532	2.3	2.6
Mar 19	531	2.4	3.2	528	2.3	3.3 (r)	534	2.6	2.6 (r)
Apr 19	534	4.1	3.3	533	4.0	3.3	544	4.5	3.1
May 19	536	4.0	3.5	535	4.0	3.4	543	3.9	3.6
Jun 19	538	3.8	4.0	537	3.8	4.0	544	3.8	4.0
Jul 19	539	3.9	3.9	539	3.9	3.9	546	3.7	3.8
Aug 19	540	3.3	3.7	539	3.5	3.7	544	2.8	3.4
Sep 19	542	3.8	3.7	541	3.9	3.7	546	3.5	3.3
Oct 19	543	2.4	3.2	541	2.2	3.2	547	3.2	3.1
Nov 19 (r)	544	3.4	3.2	543	3.4	3.2	548	3.3	3.3
Dec 19 (r)	544	2.8	2.9	543	2.7	2.8	549	3.3	3.3
Jan 20 (p)	547	3.1	3.1	546	3.1	3.1	549	2.9	3.2
	Services, SIC 2007 sections G-S (85%) ²			Finance and business services, SIC 2007 sections K-N (22%) ²			Public sector excluding financial services (17%) ²		
	Weekly Earnings (£)	% changes year on year		Weekly Earnings (£)	% changes year on year		Weekly Earnings (£)	% changes year on year	
		Single month	3 month average ³		Single month	3 month average ³		Single month	3 month average ³
	K5BZ	K5C2	K5C3	K5C4	K5C5	K5C6	KAD8	KAD9	KAE2
Jan 18	494	2.5	2.7	649	2.6	3.1	515	2.4	2.1
Nov 18 (r)	511	3.4	3.6	675	4.1	3.3	527	2.9	2.8
Dec 18	513	3.4	3.8	676	3.2	3.9	527	2.9	2.8 (r)
Jan 19 (r)	514	4.1	3.6	682	5.0	4.1	529	2.8	2.9
Feb 19	514	3.5	3.7	676	3.4	3.9	528	2.2	2.6
Mar 19	516	2.5	3.4	675	2.1	3.5	529	2.4	2.5
Apr 19	518	4.1	3.4	686	5.1	3.5	540	4.4	3.0
May 19	520	4.0	3.6	689	5.4	4.2	539	3.9	3.6
Jun 19	522	3.9	4.0	690	5.0	5.1	538	3.5	3.9
Jul 19	523	3.9	4.0	692	4.0	4.8	543	3.8	3.7
Aug 19	524	3.3	3.7	694	4.4	4.4	539	2.7	3.3
Sep 19	526	3.8	3.7	699	5.1	4.5	542	3.5	3.4
Oct 19	527	2.2	3.1	699	3.4	4.3	543	3.2	3.2
Nov 19 (r)	528	3.5	3.2	702	4.0	4.2	545	3.4	3.4
Dec 19 (r)	528	3.0	2.9	700	3.6	3.7	545	3.4	3.3
Jan 20 (p)	531	3.3	3.2	703	3.1	3.6	545	2.9	3.3
	Manufacturing, SIC 2007 section C (8%) ²			Construction, SIC 2007 section F (5%) ²			Wholesaling, retailing, hotels & restaurants, SIC 2007 sections G & I (23%) ²		
	Weekly Earnings (£)	% changes year on year		Weekly Earnings (£)	% changes year on year		Weekly Earnings (£)	% changes year on year	
		Single month	3 month average ³		Single month	3 month average ³		Single month	3 month average ³
	K5CA	K5CB	K5CC	K5CD	K5CE	K5CF	K5CG	K5CH	K5CI
Jan 18	596	2.9	3.1	609	4.8	3.1	347	1.7	2.3
Nov 18 (r)	604	1.4	1.8	628	4.3	3.4	357	2.0	2.9
Dec 18 (r)	606	1.7	1.7	638	5.7	4.4	358	2.8	3.0
Jan 19 (r)	610	2.4	1.8	631	3.7	4.6	356	2.7	2.5
Feb 19	607	1.9	2.0	636	5.3	4.9	357	2.4	2.6
Mar 19	605	0.9	1.7	632	3.0	4.0	350	-0.3	1.6
Apr 19	615	2.4	1.8	653	6.7	5.0	356	1.5	1.2
May 19	613	2.5	1.9	648	6.2	5.3	363	1.5	0.9
Jun 19	615	2.8	2.6	648	5.4	6.1	363	3.9	2.3
Jul 19	616	2.2	2.5	652	7.3	6.3	364	2.9	2.7
Aug 19	620	3.2	2.8	649	4.7	5.8	365	2.6	3.1
Sep 19	618	2.4	2.6	658	6.1	6.0	366	3.6	3.0
Oct 19	621	2.7	2.8	650	4.1	5.0	362	0.5	2.2
Nov 19	622	3.0	2.7	649	3.4	4.5	362	1.6	1.9
Dec 19 (r)	620	2.3	2.7	650	1.9	3.1	362	1.2	1.1
Jan 20 (p)	619	1.4	2.2	655	3.8	3.0	369	3.8	2.2

Source: Monthly Wages & Salaries Survey

Earnings enquiries: 01633 456120

1. Estimates of total pay include bonuses but exclude arrears of pay.

2. The figure in brackets is the percentage of whole economy employment in that sector or industry for the latest time period. Email: earnings@ons.gov.uk

3. The three month average figures are the changes in the average seasonally adjusted values for the three months ending with the relevant month compared the same period a year earlier.

EARNINGS

14 Average Weekly Earnings (nominal) - bonus pay

Standard Industrial Classification (2007)

Great Britain, seasonally adjusted

	Whole Economy (100%) ¹			Private sector (82%) ²			Public sector (18%) ²		
	Weekly Earnings (£)	% changes year on year		Weekly Earnings (£)	% changes year on year		Weekly Earnings (£)	% changes year on year	
		Single month	3 month average ²		Single month	3 month average ²		Single month	3 month average ²
	KAF4	KAF5	KAF6	KAF7	KAF8	KAF9	KAG2	KAG3	KAG4
Jan 18	31	2.7	5.4	37	2.8	5.2	2	-7.9	12.9
Nov 18 (r)	32	-0.8	4.8	38	-0.6	4.9	2	-48.8	-32.3
Dec 18 (r)	33	3.1	8.4	40	3.3	8.6	2	-21.8	-26.0
Jan 19 (r)	32	5.4	2.5	39	5.3	2.6	3	64.1	-17.7
Feb 19	32	4.8	4.4 (r)	38	4.7	4.4 (r)	2	15.2	14.2 (r)
Mar 19	32	-0.3	3.2 (r)	37	-4.4	1.7 (r)	3	113.3	56.1 (r)
Apr 19	32	1.6	2.0	39	4.8	1.6	2	10.2	35.2
May 19	33	8.0	3.0	40	7.7	2.5	2	21.8	38.0
Jun 19	32	2.0	3.9	39	0.1	4.1	2	25.6	18.8
Jul 19	33	5.9	5.3	40	4.1	3.9	4	60.9	37.6
Aug 19	32	-1.8	2.0	39	0.2	1.4	1	-58.3	-1.3
Sep 19	34	9.1	4.3	41	8.9	4.3	2	31.6	-2.7
Oct 19	32	-16.0	-3.9	39	-15.7	-3.1	2	-38.8	-35.8
Nov 19 (r)	34	7.4	-1.0	41	7.5	-0.8	2	1.1	-10.4
Dec 19 (r)	32	-2.7	-4.6	39	-2.7	-4.4	2	-5.8	-17.0
Jan 20 (p)	35	7.0	3.8	41	7.3	4.0	4	26.6	9.6

	Services, SIC 2007 sections G-S (85%) ¹			Finance and business services, SIC 2007 sections K-N (22%) ²			Public sector excluding financial services (17%) ²		
	Weekly Earnings (£)	% changes year on year		Weekly Earnings (£)	% changes year on year		Weekly Earnings (£)	% changes year on year	
		Single month	3 month average ²		Single month	3 month average ²		Single month	3 month average ²
	K5CS	K5CT	K5CU	K5CV	K5CW	K5CX	KAH3	KAH4	KAH5
Jan 18	31	1.9	6.5	75	5.0	7.3	1	3.3	15.4
Nov 18 (r)	33	-0.1	6.3	83	14.3	4.9	1	-48.6	-31.5
Dec 18 (r)	34	1.5	9.3	79	-1.8	11.8	1	-18.7	-25.6
Jan 19 (r)	33	6.4	2.5	80	6.7	6.1	2	69.2	-17.0
Feb 19	33	4.5	4.1 (r)	77	2.6	2.4 (r)	2	47.4	27.4 (r)
Mar 19	32	-3.7	2.3 (r)	77	1.3	3.5 (r)	2	117.9	76.0 (r)
Apr 19	32	2.8	1.1	78	1.2	1.7	1	11.3	53.4
May 19	34	7.4	2.1	81	21.1	7.3	2	23.8	45.3
Jun 19	33	3.0	4.4	80	2.7	7.7	1	-20.0	5.4
Jul 19	34	4.0	4.8	81	-0.5	7.0	2	54.5	22.6
Aug 19	33	-2.0	1.6	80	1.1	1.1	1	-57.0	-12.1
Sep 19	35	9.7	3.8	86	11.6	4.0	1	25.4	-2.6
Oct 19	33	-18.3	-4.7	82	-12.3	-0.7	1	-37.8	-34.3
Nov 19 (r)	35	8.1	-1.6	85	2.7	-0.1	1	-0.5	-10.7
Dec 19 (r)	33	-2.8	-5.3	80	1.4	-3.2	1	6.0	-13.8
Jan 20 (p)	36	7.4	4.2	85	5.7	3.3	2	7.6	4.6

	Manufacturing, SIC 2007 section C (8%) ²			Construction, SIC 2007 section F (5%) ¹			Wholesaling, retailing, hotels & restaurants, SIC 2007 sections G & I (23%) ²		
	Weekly Earnings (£)	% changes year on year		Weekly Earnings (£)	% changes year on year		Weekly Earnings (£)	% changes year on year	
		Single month	3 month average ²		Single month	3 month average ²		Single month	3 month average ²
	K5D3	K5D4	K5D5	K5D6	K5D7	K5D8	K5D9	K5DA	K5DB
Jan 18	25	9.9	10.3	27	31.5	0.4	22	-2.2	4.2
Nov 18 (r)	24	-16.8	-9.8	27	-6.7	-1.7	22	-15.0	-5.7
Dec 18 (r)	26	4.2	-7.9	30	39.7	9.7	22	-2.6	-3.2
Jan 19 (r)	26	3.2	-3.6	25	-5.2	6.9	21	-1.9	-6.9
Feb 19	23	-9.8	-0.8 (r)	29	21.3	17.2 (r)	23	0.2	-1.4 (r)
Mar 19	24	-6.9	-4.5 (r)	30	-3.5	3.3 (r)	19	-21.8	-8.2 (r)
Apr 19	27	3.2	-4.4	35	57.6	21.9	20	-11.2	-11.2
May 19	26	-3.7	-2.5	31	33.0	25.5	25	-13.5	-15.4
Jun 19	27	12.4	3.7	28	14.8	34.5	22	13.2	-5.4
Jul 19	25	-1.7	2.0	31	51.4	32.0	20	-4.5	-3.2
Aug 19	27	14.6	8.1	27	-21.4	8.4	22	2.1	3.4
Sep 19	24	-4.2	2.6	32	15.6	9.0	22	6.3	1.3
Oct 19	26	2.2	4.0	28	-12.0	-7.3	22	-13.2	-2.3
Nov 19 (r)	25	7.5	1.7	29	6.5	2.7	22	0.8	-2.6
Dec 19 (r)	25	-5.4	1.2	30	-0.5	-2.5	22	-1.8	-5.1
Jan 20 (p)	25	-5.5	-1.4	35	40.6	14.3	25	19.2	5.9

Source: Monthly Wages & Salaries Survey

Earnings enquiries: 01633 456120

1. The figure in brackets is the percentage of whole economy employment in that sector or industry for the latest time period. Email: earnings@ons.gov.uk
2. The three month average figures are the changes in the average seasonally adjusted values for the three months ending with the relevant month compared to the same period a year earlier.

EARNINGS

15 Average Weekly Earnings (nominal) - regular pay¹

Standard Industrial Classification (2007)

Great Britain, seasonally adjusted

	Whole Economy (100%) ²			Private sector (82%) ²			Public sector (18%) ²		
	Weekly Earnings (£)	% changes year on year		Weekly Earnings (£)	% changes year on year		Weekly Earnings (£)	% changes year on year	
		Single month	3 month average ³		Single month	3 month average ³		Single month	3 month average ³
	KAI7	KAI8	KAI9	KAJ2	KAJ3	KAJ4	KAJ5	KAJ6	KAJ7
Jan 18	480	2.7	2.6	473	2.8	2.7	517	2.3	2.0
Nov 18 (r)	494	3.4	3.3	487	3.5	3.5	529	3.1	2.9
Dec 18 (r)	496	3.3	3.4	488	3.4	3.5	530	2.8	2.8
Jan 19	498	3.7	3.5	491	3.9	3.6	532 (r)	2.8	2.9
Feb 19	497	3.2	3.4	490	3.5	3.6	531	2.2	2.6
Mar 19	498	3.1	3.3	491	3.3	3.6	531	2.3	2.4
Apr 19	503	4.0	3.4	494	3.9	3.6	542	4.4	2.9
May 19	504	3.8	3.6	496	3.8	3.7	539	3.8	3.5
Jun 19	506	4.0	3.9	498	4.1	4.0	540	3.5	3.9
Jul 19	507	3.8	3.9	500	3.9	4.0	541	3.1	3.5
Aug 19	508	3.6	3.8	501	3.6	3.9	542	3.2	3.3
Sep 19	509	3.6	3.6	501	3.6	3.7	544	3.4	3.2
Oct 19	510	3.2	3.5	502	3.2	3.5	546	3.3	3.3
Nov 19	510 (r)	3.2	3.4	503	3.2	3.3	547	3.4	3.4
Dec 19 (r)	511	3.2	3.2	504	3.2	3.2	548	3.3	3.4
Jan 20 (p)	512	2.8	3.1	504	2.7	3.0	547	2.9	3.2

	Services, SIC 2007 sections G-S (85%) ²			Finance and business services, SIC 2007 sections K-N (22%) ²			Public sector excluding financial services (17%) ²		
	Weekly Earnings (£)	% changes year on year		Weekly Earnings (£)	% changes year on year		Weekly Earnings (£)	% changes year on year	
		Single month	3 month average ³		Single month	3 month average ³		Single month	3 month average ³
	K5DL	K5DM	K5DN	K5DO	K5DP	K5DQ	KAK6	KAK7	KAK8
Jan 18	463	2.6	2.5	574	2.1	2.3	513	2.3	2.1
Nov 18	478	3.5	3.5	594	3.6	3.3	526	3.1	2.9
Dec 18 (r)	479	3.5	3.6	596	3.8	3.6	526	2.8	2.9
Jan 19 (r)	481	3.9	3.6	602	4.9	4.1	528	2.9	2.9
Feb 19	480	3.2	3.5	600	3.3	4.0 (r)	527	2.2	2.6
Mar 19	482	3.2	3.4	604	4.1	4.1 (r)	528	2.4	2.5
Apr 19	486	4.1	3.5	605	4.5	4.0	538	4.3	3.0
May 19	487	3.9	3.7	606	4.3	4.3	536	3.9	3.5
Jun 19	489	4.2	4.1	613	5.2	4.7	537	3.6	3.9
Jul 19	491	3.8	4.0	611	4.2	4.6	538	3.2	3.6
Aug 19	491	3.5	3.8	613	4.6	4.7	539	3.3	3.3
Sep 19	492	3.6	3.7	616	4.7	4.5	541	3.4	3.3
Oct 19	493	3.2	3.5	619	4.5	4.6	542	3.4	3.4
Nov 19	494	3.3	3.4	618	4.0	4.4	544	3.4 (r)	3.4
Dec 19 (r)	495	3.4	3.3	619	3.9	4.2	544	3.4	3.4
Jan 20 (p)	496	3.0	3.2	617	2.6	3.5	544	3.0	3.3

	Manufacturing, SIC 2007 section C (8%) ²			Construction, SIC 2007 section F (5%) ²			Wholesaling, retailing, hotels & restaurants, SIC 2007 sections G & I (23%) ²		
	Weekly Earnings (£)	% changes year on year		Weekly Earnings (£)	% changes year on year		Weekly Earnings (£)	% changes year on year	
		Single month	3 month average ³		Single month	3 month average ³		Single month	3 month average ³
	K5DU	K5DV	K5DW	K5DX	K5DY	K5DZ	K5E2	K5E3	K5E4
Jan 18	571	2.7	2.9	580	4.1	3.5	325	2.1	2.2
Nov 18 (r)	580	2.0	2.1	600	4.8	3.6	335	3.2	3.3
Dec 18 (r)	579	1.5	1.9	606	4.0	3.9	336	3.1	3.4
Jan 19 (r)	584	2.2	1.9	604	4.0	4.3	334	3.0	3.1
Feb 19	584	2.2	2.0	606	4.9	4.3 (r)	335	2.6	2.9
Mar 19	585	2.2	2.2	604	3.2	4.0	334	2.0	2.5
Apr 19	586	2.4	2.3	616	5.2	4.4	337	3.0	2.5
May 19	587	2.7	2.4	620	5.2	4.5	339	3.0	2.7
Jun 19	588	2.3	2.5	621	5.2	5.2	341	3.4	3.1
Jul 19	589	2.4	2.5	621	5.7	5.4	342	3.3	3.2
Aug 19	593	3.0	2.6	623	5.6	5.5	343	2.7	3.1
Sep 19	593	2.5	2.7	622	5.4	5.6	343	3.5	3.1
Oct 19	595	2.7	2.8	621	5.1	5.4	339	1.4	2.5
Nov 19	597	2.9	2.7	620	3.3	4.6	340	1.6	2.2
Dec 19 (r)	595	2.8	2.8	619	2.0	3.5	340	1.4	1.5
Jan 20 (p)	593	1.5	2.4	620	2.7	2.7	344	2.9	2.0

Source: Monthly Wages & Salaries Survey

Earnings enquiries: 01633 456120

Email: earnings@ons.gov.uk

1. Estimates of regular pay exclude bonuses and arrears of pay.

2. The figure in brackets is the percentage of whole economy employment in that sector or industry for the latest time period.

3. The three month average figures are the changes in the average seasonally adjusted values for the three months ending with the relevant month compared with the same period a year earlier.

EARNINGS

16 Average Weekly Earnings - real and nominal¹

Great Britain whole economy, seasonally adjusted

Total pay (including bonuses) ¹						
	Nominal earnings			Real earnings ³		
	Nominal Weekly Earnings (£)	% changes year on year		Weekly Earnings at constant 2015 prices (£)	% changes year on year	
		Single month	3 month average ²		Single month	3 month average ²
	KAB9	KAC2	KAC3	A3WX	A3WV	A3WW
Jan 18	511	2.7	2.7	487	-0.1	-0.1
Nov 18	526	3.3 (r)	3.4	494	1.2	1.2
Dec 18	529	3.3	3.6	495	1.3	1.4 (r)
Jan 19 (r)	530	3.8	3.5	497	2.1	1.5
Feb 19	530	3.4	3.5	496	1.5	1.6
Mar 19	531	2.4	3.2	496	0.5	1.4 (r)
Apr 19	534	4.1	3.3	498	2.1	1.4
May 19	536	4.0	3.5	499	2.1	1.5
Jun 19	538	3.8	4.0	500	1.8	2.0
Jul 19	539	3.9	3.9	501	1.9	1.9
Aug 19	540	3.3	3.7	501	1.6	1.8
Sep 19	542	3.8	3.7	502	2.1	1.9
Oct 19	543	2.4	3.2	502	1.0	1.5
Nov 19	544	3.4	3.2	503	1.8	1.6
Dec 19	544	2.8	2.9	503	1.5	1.4
Jan 20 (p)	547	3.1	3.1	503	1.4	1.5

Regular pay (excluding bonuses)						
	Nominal earnings			Real earnings ³		
	Nominal Weekly Earnings (£)	% changes year on year		Weekly Earnings at constant 2015 prices (£)	% changes year on year	
		Single month	3 month average ²		Single month	3 month average ²
	KAI7	KAI8	KAI9	A2FC	A2F9	A2FA
Jan 18	480	2.7	2.6	458	0.0	-0.2
Nov 18 (r)	494	3.4	3.3	464	1.2	1.1
Dec 18 (r)	496	3.3	3.4	465	1.3	1.2
Jan 19	498	3.7	3.5	467	1.9	1.5
Feb 19	497	3.2	3.4	466	1.4	1.5
Mar 19	498	3.1	3.3	466	1.2	1.5
Apr 19	503	4.0	3.4	468	2.0	1.5
May 19	504	3.8	3.6	469	1.9	1.7
Jun 19	506	4.0	3.9	470	2.1	2.0
Jul 19	507	3.8	3.9	470	1.8	1.9
Aug 19	508	3.6	3.8	471	1.8	1.9
Sep 19	509	3.6	3.6	471	1.9	1.8
Oct 19	510	3.2	3.5	472	1.6	1.8
Nov 19 (r)	510	3.2	3.4	472	1.8	1.8
Dec 19 (r)	511	3.2	3.2	473	1.9	1.7
Jan 20 (p)	512	2.8	3.1	471	0.9	1.5

Source: Monthly Wages & Salaries Survey

Earnings enquiries: 01633 456120

Email: earnings@ons.gov.uk

1. Estimates of total pay include bonuses but exclude arrears of pay.

2. The three month average figures are the changes in the average seasonally adjusted values for the three months ending with the relevant month compared with the same period a year earlier.

3. Estimates of real earnings are calculated by deflating the nominal earnings estimates by the Consumer Prices Index including owner occupiers' housing costs (CPIH), our preferred measure of consumer price inflation.

17 International comparisons of employment and unemployment

Employment rates as published by EUROSTAT: (not seasonally adjusted)					Unemployment rates as published by EUROSTAT on 03 March 2020 (seasonally adjusted)				
	Latest period	Employment rate (%) ^{1,2}	Change on year %		Latest Period	Unemployment rate (%) ³	Change on month %	Change on year %	
United Kingdom (*)	ANZ6 Jul-Sep 19	75.1	0.4	United Kingdom (*)	ZXDW Nov 19	3.7	-0.1	-0.2	
European Union (EU)					European Union (EU)				
Austria	YXSN Jul-Sep 19	74.2	0.4	Austria	ZXDS Jan 20	4.3	0.1	-0.4	
Belgium	YXSO Jul-Sep 19	65.8	0.8	Belgium	ZXDI Jan 20	5.3	0.0	-0.3	
Bulgaria	A495 Oct-Dec 19	70.0	2.3	Bulgaria	A492 Jan 20	4.1	-0.1	-0.7	
Croatia	GUMI Jul-Sep 19	63.0	1.1	Croatia	GUMJ Jan 20	6.1	-0.1	-1.1	
Cyprus	A4AC Oct-Dec 19	71.0	1.8	Cyprus	A4AN Jan 20	6.0	-0.3	-1.6	
Czech Republic	A4AD Jul-Sep 19	75.2	0.2	Czech Republic	A4AO Jan 20	2.0	0.0	-0.1	
Denmark	YXSP Jul-Sep 19	75.5	0.8	Denmark	ZXDJ Jan 20	4.9	0.0	-0.4	
Estonia	A4AE Oct-Dec 19	76.1	0.3	Estonia	A4AP Dec 19	4.5	0.2	0.2	
Finland	YXSQ Jul-Sep 19	74.0	0.9	Finland	ZXDU Jan 20	6.6	0.0	-0.1	
France	YXSR Oct-Dec 19	65.9	0.5	France	ZXDN Jan 20	8.2	0.0	-0.5	
Germany	YXSS Jul-Sep 19	77.0	0.7	Germany	ZXDK Jan 20	3.2	0.0	0.0	
Greece	YXST Jul-Sep 19	57.4	1.5	Greece	ZXDL Dec 19	16.3	-0.2	-2.2	
Hungary	A4AF Jul-Sep 19	70.3	0.8	Hungary	A4AQ Dec 19	3.4	0.0	-0.2	
Ireland	YXSU Oct-Dec 19	70.2	1.1	Ireland	ZXDO Jan 20	4.8	0.1	-0.3	
Italy	YXSV Jul-Sep 19	59.4	0.5	Italy	ZXDP Jan 20	9.8	0.0	-0.6	
Latvia	A4AG Jul-Sep 19	73.1	0.3	Latvia	A4AR Jan 20	6.4	0.1	-0.3	
Lithuania	A4AH Jul-Sep 19	73.2	-0.8	Lithuania	A4AS Jan 20	6.6	0.2	0.5	
Luxembourg	YXSW Oct-Dec 19	67.8	-0.3	Luxembourg	ZXDQ Jan 20	5.7	0.1	0.5	
Malta	A4AI Jul-Sep 19	73.7	0.4	Malta	A4AT Jan 20	3.4	0.1	-0.2	
Netherlands	YXSX Jul-Sep 19	78.4	0.7	Netherlands	ZXDR Jan 20	3.0	-0.2	-0.6	
Poland	A4AJ Jul-Sep 19	68.9	0.9	Poland	A4AU Jan 20	2.9	0.0	-0.9	
Portugal	YXSY Oct-Dec 19	70.6	0.7	Portugal	ZXDT Jan 20	6.9	0.2	0.3	
Romania	A494 Jul-Sep 19	66.7	0.5	Romania	A48Z Jan 20	3.9	-0.1	0.0	
Slovak Republic	A4AK Jul-Sep 19	68.5	0.6	Slovak Republic	A4AV Jan 20	5.7	0.0	-0.2	
Slovenia	A4AL Jul-Sep 19	72.1	0.2	Slovenia	A4AW Jan 20	4.7	0.1	0.2	
Spain	YXSZ Oct-Dec 19	63.7	0.7	Spain	ZXDM Jan 20	13.7	0.0	-0.6	
Sweden	YXTA Oct-Dec 19	76.7	-0.3	Sweden ⁵	ZXDV Jan 20	7.1	0.5	1.0	
Total EU⁴	A496 Jul-Sep 19	68.8	0.6	Total EU⁴	A493 Jan 20	6.6	0.0	-0.3	
Eurozone ⁴	YXTC Jul-Sep 19	68.2	0.4	Eurozone ⁴	ZXDH Jan 20	7.4	0.0	-0.4	
Employment rates published by the OECD (seasonally adjusted)					Unemployment rates as published by national statistical offices (seasonally adjusted)				
Canada	A48O Oct-Dec 19	74.4	0.3	Canada	ZXDZ Feb 20	5.6	0.1	-0.2	
Japan	A48P Oct-Dec 19	78.0	0.8	Japan	ZXDY Jan 20	2.4	0.2	-0.1	
United States	A48Q Oct-Dec 19	71.7	0.7	United States	ZXDZ Feb 20	3.5	-0.1	0.0	

Sources: EUROSTAT, OECD, national statistical offices.
Labour market statistics enquiries: labour.market@ons.gov.uk

(*) Note: The UK rates shown in this table are as published by EUROSTAT (the EUs statistical office). See Table 1 for the latest rates for the UK as published by ONS.

1. All employment rates shown in this table are for those aged from 15 to 64 except for the rate for the United States published by OECD which are for those aged from 16 to 64.
2. The employment rates for the EU are published by EUROSTAT and are not seasonally adjusted. EUROSTAT do not publish seasonally adjusted (SA) employment rates but SA rates for some EU countries are published by OECD. These OECD employment rates are available on our website at [dataset A10](#).
3. Unemployment rates published by EUROSTAT for most EU countries (but not for the UK), are calculated by extrapolating from the most recent LFS data using monthly registered unemployment data. A standard population basis (15-74) is used by EUROSTAT except for Spain, Italy and the UK (16-74). The unemployment rate for the US is based on those aged 16 and over, but the rates for Canada and Japan are for those aged 15 and over. All unemployment rates shown in this table are seasonally adjusted.
4. The "Total EU" series consist of all 27 EU countries. The Eurozone figures consist of the following EU countries: Austria, Belgium, Cyprus, Estonia, Finland, France, Germany, Greece, Ireland, Italy, Latvia, Lithuania, Luxembourg, Malta, Netherlands, Portugal, Slovak Republic, Slovenia and Spain.
5. The EU unemployment rates are as published on the EUROSTAT database. For Sweden the rates on the database differ from those shown in the EUROSTAT News Release published on 30 January 2020. This is because the figures for Sweden on the database are seasonally adjusted estimates but the figures for Sweden shown in the News Release are the trend component.

18 Labour disputes

United Kingdom, not seasonally adjusted

	Working days lost ^{1,2} (thousands)	Working days lost in the Public Sector (thousands) ^{1,2}	Working days lost in the Private Sector (thousands) ^{1,2}	Number of stoppages ³	Number of stoppages in the Public Sector	Number of stoppages in the Private Sector	Workers involved (thousands) ^{1,3}
	1	2	3	4	5	6	7
	BBFW	F8XZ	F8Y2	BLUU	F8Y3	F8Y4	BLUT
2018 January	9	1	8	18	4	14	3
2019 January	11	1	11	10	2	8	6
February	7	2	5	11	5	6	6
March	9	1	8	14	6	8	5
April	2	1	2	8	1	7	1
May	10	1	10	14	2	12	5
June	12	1	12	24	5	19	3
July	11	4	7	24	9	15	7
August	7	1	6	10	2	8	2
September	9	1	8	14	3	11	3
October	8	1	7	13	5	8	2
November	84	14	69	13	4	9	21
December (r)	64	7	57	12	7	5	19
2020 January (p)	18	17	1	7	5	2	7
Cumulative totals 12 months to:							
Jan 19	275	26	249	82	23	59	44
Jan 20 (p)	242	50	192	99	34	65	43

Relationship between columns 1=2+3; 4=5+6

Data source: ONS Labour Disputes Survey
Labour disputes enquiries 01633 455400

1. Estimates of working days lost and workers involved are shown to the nearest thousand. Unrounded estimates of less than 500 therefore round to zero.
2. Due to rounding the working days lost for the public and private sectors may not add up to the total working days lost.
3. The latest 12 month cumulative totals for the figures in these columns will not necessarily equal the sum of the 12 months as some disputes continue for over one month. These disputes appear in each month's data, but only once in the total.

VACANCIES

19 Vacancies¹ by size of business

United Kingdom (thousands), seasonally adjusted

	All Vacancies	Number of employees				
		1-9	10-49	50-249	250-2499	2500+
		ALY5	ALY6	ALY7	ALY8	ALY9
	AP2Y					
Levels						
Dec-Feb 2018	818	124	119	122	160	292
Dec-Feb 2019 (r)	848	129	125	115	180	300
Jan-Mar 2019	846	124	125	116	183	298
Feb-Apr 2019	840	124	120	115	186	295
Mar-May 2019	835	129	116	111	185	293
Apr-Jun 2019	825	118	118	114	183	292
May-Jul 2019	818	114	119	113	182	291
Jun-Aug 2019	814	112	119	111	182	289
Jul-Sept 2019	816	121	122	105	181	289
Aug-Oct 2019	803	113	119	102	179	289
Sept-Nov 2019 (r)	798	110	118	101	179	290
Oct-Dec 2019 (r)	804	110	121	104	180	289
Nov-Jan 2020 (r)	811	113	121	109	178	291
Dec-Feb 2020 (p)	817	116	120	114	171	296
Change on quarter *	19	5	2	13	-7	6
Change % *	2.4	4.7	1.9	12.4	-4.1	2.2
Change on year	-30	-13	-4	-1	-8	-4
Change %	-3.6	-10.0	-3.4	-0.9	-4.6	-1.3

1. Excludes Agriculture, Forestry and Fishing.

Source: ONS Vacancy Survey

Vacancy Survey enquiries: vacancy.survey@ons.gov.uk, 01633 456777

* Change on previous non-overlapping three month rolling average time period.

20 Vacancies¹ and Unemployment

United Kingdom (thousands), seasonally adjusted

	All Vacancies ¹	Unemployment ²	Number of unemployed people per vacancy
	AP2Y	MGSC	JPC5
Levels			
Nov-Jan 2018	822	1,451	1.8
Nov-Jan 2019	861	1,338	1.6
Feb-Apr 2019	840	1,304	1.6
May-Jul 2019	818	1,294	1.6
Aug-Oct 2019	803	1,281	1.6
Nov-Jan 2020 (r)	811	1,343	1.7
Change on quarter	8	63	0.1
Change %	1.0	4.9	
Change on year	-50	5	0.1
Change %	-5.8	0.4	

Source: ONS Vacancy Survey/ Labour Force Survey

Vacancy Survey enquiries: vacancy.survey@ons.gov.uk, 01633 456777

1. Excludes Agriculture, Forestry and Fishing.

2. Unemployment estimates are produced from the Labour Force Survey (LFS) and are always one period behind the ONS Vacancy Survey estimates. This table therefore shows estimates for the same periods as shown in table 1 (which shows LFS estimates).

VACANCIES

21 Vacancies by industry

Standard Industrial Classification (2007)

United Kingdom (thousands), seasonally adjusted

SIC 2007 sections	All vacancies ¹	Mining & quarrying	Manu- facturing	Electricity, gas, steam & air conditioning supply ²	Water supply, sewerage, waste & remediation activities	Construction	Wholesale & retail trade; repair of motor vehicles and motor cycles	Transport & storage	Accommoda- tion & food service activities	Information & communica- tion
	B-S	B	C	D	E	F	G	H	I	J
	AP2Y	JP9H	JP9I	JP9J	JP9K	JP9L	JP9M	JP9N	JP9O	JP9P
Levels (thousands)										
Dec-Feb 2018	818	1	59	4	4	23	132	43	94	44
Dec-Feb 2019 (r)	848	1	61	3	4	27	138	43	89	52
Jan-Mar 2019	846	1	61	3	4	28	138	43	92	50
Feb-Apr 2019	840	2	56	4	4	27	138	42	93	48
Mar-May 2019	835	2	57	4	4	27	136	42	93	47
Apr-Jun 2019	825	2	56	4	4	27	134	41	89	44
May-Jul 2019	818	2	54	3	4	25	135	38	90	43
Jun-Aug 2019	814	2	54	3	4	24	129	35	94	43
Jul-Sept 2019	816	2	52	3	3	25	132	33	96	44
Aug-Oct 2019	803	2	51	3	4	25	129	32	93	43
Sept-Nov 2019 (r)	798	1	50	3	4	26	131	34	90	41
Oct-Dec 2019 (r)	804	2	52	3	4	26	130	35	88	41
Nov-Jan 2020 (r)	811	2	55	3	4	27	130	36	89	43
Dec-Feb 2020 (p)	817	2	55	3	3	28	132	35	91	42
Change on quarter *	19	0	5	0	0	2	2	2	2	1
Change % *	2.4	7.1	9.1	-3.2	-10.5	7.3	1.5	5.7	1.9	3.2
Change on year	-30	0	-6	0	-1	1	-6	-7	3	-9
Change %	-3.6	15.4	-9.3	-11.8	-17.1	2.9	-4.3	-16.7	2.8	-17.8
	AP2Z	JPA2	JPA3	JPA4	JPA5	JPA6	JPA7	JPA8	JPA9	JPB2
Vacancies per 100 employee jobs										
Dec-Feb 2018	2.7	1.8	2.3	3.0	1.9	1.5	2.8	3.0	4.2	3.2
Dec-Feb 2019 (r)	2.8	2.6	2.4	2.5	1.9	1.8	3.0	3.0	3.9	3.8
Jan-Mar 2019	2.8	2.8	2.4	2.5	1.9	1.8	3.0	3.0	4.1	3.6
Feb-Apr 2019	2.8	3.0	2.2	2.6	1.8	1.8	3.0	3.0	4.1	3.5
Mar-May 2019	2.8	3.2	2.3	2.5	1.9	1.8	2.9	2.9	4.1	3.4
Apr-Jun 2019	2.7	3.2	2.2	2.7	2.0	1.8	2.9	2.9	4.0	3.3
May-Jul 2019	2.7	3.2	2.1	2.5	2.0	1.7	2.9	2.7	4.0	3.2
Jun-Aug 2019	2.7	3.2	2.2	2.4	1.9	1.6	2.8	2.5	4.2	3.1
Jul-Sept 2019	2.7	3.2	2.1	2.2	1.5	1.7	2.9	2.3	4.2	3.2
Aug-Oct 2019	2.7	3.0	2.0	2.2	1.6	1.7	2.8	2.2	4.1	3.2
Sept-Nov 2019 (r)	2.6	2.8	2.0	2.2	1.8	1.8	2.8	2.3	4.0	3.0
Oct-Dec 2019 (r)	2.7	3.0	2.1	2.2	1.7	1.8	2.8	2.4	3.9	3.0
Nov-Jan 2020 (r)	2.7	3.2	2.2	2.1	1.7	1.8	2.8	2.5	4.0	3.1
Dec-Feb 2020 (p)	2.7	3.0	2.2	2.2	1.6	1.9	2.9	2.5	4.0	3.1
Change on quarter *	0.1	0.2	0.2	-0.1	-0.2	0.1	0.0	0.1	0.1	0.1
Change on year	-0.1	0.4	-0.2	-0.3	-0.3	0.1	-0.1	-0.5	0.1	-0.7
	K	L	M	N	O	P	Q	R	S	G-S
Levels (thousands)	JP9Q	JP9R	JP9S	JP9T	JP9U	JP9V	JP9W	JP9X	JP9Y	JP9Z
Dec-Feb 2018	39	9	72	53	18	49	130	20	23	726
Dec-Feb 2019 (r)	36	14	81	50	20	50	132	21	25	750
Jan-Mar 2019	34	12	80	49	20	51	134	23	23	749
Feb-Apr 2019	34	11	79	51	21	52	135	22	21	747
Mar-May 2019	33	10	79	50	22	52	136	21	21	742
Apr-Jun 2019	34	12	78	50	22	53	137	20	19	733
May-Jul 2019	33	11	79	48	22	52	138	23	19	730
Jun-Aug 2019	33	11	79	52	22	51	138	23	19	727
Jul-Sept 2019	32	10	83	55	22	49	138	19	20	731
Aug-Oct 2019	32	11	84	54	23	48	137	17	19	720
Sept-Nov 2019 (r)	31	11	79	53	23	51	138	16	18	714
Oct-Dec 2019 (r)	32	12	77	56	24	51	137	18	19	718
Nov-Jan 2020 (r)	32	11	76	53	22	53	136	21	19	720
Dec-Feb 2020 (p)	31	12	78	56	22	51	136	23	17	726
Change on quarter *	0	1	-1	3	-1	1	-2	7	-1	12
Change % *	-0.3	5.5	-1.4	5.1	-5.6	1.0	-1.3	41.3	-3.9	1.7
Change on year	-5	-3	-3	5	2	1	3	1	-7	-24
Change %	-13.2	-18.4	-4.1	10.3	10.6	2.2	2.5	6.6	-29.6	-3.3
	JPB3	JPB4	JPB5	JPB6	JPB7	JPB8	JPB9	JPC2	JPC3	JPC4
Vacancies per 100 employee jobs										
Dec-Feb 2018	3.7	1.8	2.9	2.0	1.4	1.8	3.2	2.6	3.8	2.8
Dec-Feb 2019 (r)	3.4	2.8	3.2	1.9	1.5	1.9	3.3	2.8	4.1	2.9
Jan-Mar 2019	3.2	2.3	3.2	1.9	1.6	1.9	3.3	3.0	3.9	2.9
Feb-Apr 2019	3.2	2.1	3.2	1.9	1.7	1.9	3.3	2.8	3.5	2.9
Mar-May 2019	3.2	2.0	3.2	1.9	1.7	1.9	3.4	2.7	3.4	2.9
Apr-Jun 2019	3.2	2.3	3.1	1.9	1.7	2.0	3.4	2.6	3.2	2.8
May-Jul 2019	3.2	2.1	3.1	1.8	1.7	2.0	3.4	2.9	3.1	2.8
Jun-Aug 2019	3.2	2.1	3.1	2.0	1.7	1.9	3.4	2.9	3.2	2.8
Jul-Sept 2019	3.1	1.9	3.3	2.1	1.7	1.8	3.4	2.5	3.3	2.8
Aug-Oct 2019	3.0	2.2	3.3	2.1	1.8	1.8	3.4	2.2	3.1	2.8
Sept-Nov 2019 (r)	3.0	2.1	3.1	2.0	1.8	1.9	3.4	2.1	3.0	2.8
Oct-Dec 2019 (r)	3.0	2.3	3.1	2.1	1.8	1.9	3.4	2.3	3.1	2.8
Nov-Jan 2020 (r)	3.0	2.1	3.0	2.0	1.7	2.0	3.4	2.8	3.1	2.8
Dec-Feb 2020 (p)	3.0	2.3	3.1	2.1	1.7	1.9	3.3	2.9	2.9	2.8
Change on quarter *	0.0	0.1	0.0	0.1	-0.1	0.0	0.0	0.9	-0.1	0.0
Change on year	-0.5	-0.5	-0.1	0.2	0.2	0.0	0.1	0.2	-1.2	-0.1

1. Excludes Agriculture, Forestry and Fishing.

Source: ONS Vacancy Survey

2. Not seasonally adjusted. These series do not display seasonality. Therefore the unadjusted series is the best estimate of a 'seasonally adjusted' series.

* Change on previous non-overlapping three month rolling average time period.

Vacancy Survey enquiries: vacancy.survey@ons.gov.uk, 01633 456777

REDUNDANCIES

22 Redundancies: level and rates ¹

United Kingdom (seasonally adjusted)

	People (aged 16 and over)		Men (aged 16 and over)		Women (aged 16 and over)	
	Level (000s)	Rate ¹	Level (000s)	Rate ¹	Level (000s)	Rate ¹
	BEAO	BEIR	BEIU	BEIX	BEJA	BEJD
Nov-Jan 2018	102	3.8	61	4.5	41	3.1
Nov-Jan 2019	91	3.3	53	3.8	38	2.8
Feb-Apr 2019	108	3.9	64	4.6	44	3.2
May-Jul 2019	98	3.5	51	3.7	47	3.4
Aug-Oct 2019	118	4.3	62	4.5	56	4.1
Nov-Jan 2020	106	3.8	61	4.4	45	3.3
change on quarter	-12	-0.4	-2	-0.1	-11	-0.8
change %	-10.5		-2.6		-19.3	
change on year	15	0.5	8	0.5	7	0.5
change %	16.4		14.1		19.5	

Data source: Labour Force Survey

Labour market statistics enquiries: labour.market@ons.gov.uk

1. The redundancy rate is the ratio of the redundancy level for the given quarter to the seasonally adjusted number of employees in the previous quarter, multiplied by 1,000.

REGIONAL SUMMARY

23(1) Regional summary of labour market headline indicators

Thousands, seasonally adjusted

Headline estimates for November 2019 to January 2020

Area Codes	Area Names	Economically active ¹		Employment		Unemployment		Economically inactive	
		Aged 16+ Level	Aged 16-64 Rate (%) ²	Aged 16+ Level	Aged 16-64 Rate (%) ²	Aged 16+ Level	Aged 16+ Rate (%) ³	Aged 16-64 Level	Aged 16-64 Rate (%) ²
K02000001	United Kingdom	34,328	79.6	32,985	76.5	1,343	3.9	8,431	20.4
K03000001	Great Britain	33,431	79.8	32,110	76.6	1,322	4.0	8,128	20.2
E92000001	England	29,126	80.1	27,952	76.9	1,174	4.0	6,922	19.9
E12000001	North East	1,288	76.6	1,209	71.7	80	6.2	383	23.4
E12000002	North West	3,694	79.4	3,532	75.8	163	4.4	927	20.6
E12000003	Yorkshire and The Humber	2,691	76.5	2,567	73.0	123	4.6	793	23.5
E12000004	East Midlands	2,484	81.3	2,387	78.0	98	3.9	551	18.7
E12000005	West Midlands	2,960	79.0	2,827	75.2	133	4.5	759	21.0
E12000006	East	3,238	81.2	3,128	78.4	110	3.4	712	18.8
E12000007	London	5,029	79.6	4,804	76.0	224	4.5	1,244	20.4
E12000008	South East	4,826	82.7	4,670	80.0	156	3.2	966	17.3
E12000009	South West	2,915	82.4	2,828	79.9	87	3.0	587	17.6
W92000004	Wales	1,530	77.0	1,479	74.4	51	3.3	439	23.0
S92000003	Scotland	2,775	77.7	2,679	74.9	96	3.5	767	22.3
N92000002	Northern Ireland	897	74.1	875	72.3	22	2.4	302	25.9

Change on quarter (change since August to October 2019)

Note: Changes on quarter at regional level are particularly subject to sampling variability and should be interpreted in the context of changes over several quarters rather than in isolation.

Area Codes	Area Names	Economically active ¹		Employment		Unemployment		Economically inactive	
		Aged 16+ Level	Aged 16-64 Rate (%) ²	Aged 16+ Level	Aged 16-64 Rate (%) ²	Aged 16+ Level	Aged 16+ Rate (%) ³	Aged 16-64 Level	Aged 16-64 Rate (%) ²
K02000001	United Kingdom	246	0.4	184	0.3	63	0.2	-175	-0.4
K03000001	Great Britain	248	0.4	186	0.3	62	0.2	-175	-0.4
E92000001	England	224	0.5	155	0.3	69	0.2	-167	-0.5
E12000001	North East	10	1.0	9	0.8	1	0.1	-16	-1.0
E12000002	North West	32	0.5	15	0.2	16	0.4	-22	-0.5
E12000003	Yorkshire and The Humber	-7	-0.4	-20	-0.7	13	0.5	14	0.4
E12000004	East Midlands	23	1.0	15	0.8	8	0.3	-30	-1.0
E12000005	West Midlands	6	0.4	5	0.2	1	0.0	-12	-0.4
E12000006	East	13	0.4	4	0.2	9	0.3	-13	-0.4
E12000007	London	118	1.3	115	1.2	3	0.0	-75	-1.3
E12000008	South East	20	0.6	13	0.6	7	0.1	-35	-0.6
E12000009	South West	11	-0.6	1	-0.9	10	0.3	21	0.6
W92000004	Wales	-4	-0.1	0	0.1	-3	-0.2	2	0.1
S92000003	Scotland	27	0.3	31	0.4	-4	-0.2	-10	-0.3
N92000002	Northern Ireland	-2	0.0	-3	-0.1	1	0.1	0	0.0

Change on year (change since November 2018 to January 2019)

Area Codes	Area Names	Economically active ¹		Employment		Unemployment		Economically inactive	
		Aged 16+ Level	Aged 16-64 Rate (%) ²	Aged 16+ Level	Aged 16-64 Rate (%) ²	Aged 16+ Level	Aged 16+ Rate (%) ³	Aged 16-64 Level	Aged 16-64 Rate (%) ²
K02000001	United Kingdom	276	0.3	271	0.4	5	0.0	-118	-0.3
K03000001	Great Britain	268	0.3	253	0.3	15	0.0	-112	-0.3
E92000001	England	328	0.5	299	0.5	29	0.1	-170	-0.5
E12000001	North East	3	0.2	-12	-0.8	15	1.1	-5	-0.2
E12000002	North West	62	1.4	30	0.7	32	0.8	-65	-1.4
E12000003	Yorkshire and The Humber	-60	-2.1	-39	-1.4	-21	-0.6	70	2.1
E12000004	East Midlands	59	2.1	75	2.6	-16	-0.7	-60	-2.1
E12000005	West Midlands	20	0.7	36	1.3	-16	-0.6	-24	-0.7
E12000006	East	20	-0.8	13	-0.9	7	0.2	31	0.8
E12000007	London	121	0.8	104	0.7	18	0.3	-42	-0.8
E12000008	South East	83	1.4	76	1.3	7	0.1	-76	-1.4
E12000009	South West	19	0.0	16	0.0	2	0.1	0	0.0
W92000004	Wales	-65	-2.5	-48	-1.7	-17	-0.9	48	2.5
S92000003	Scotland	5	-0.3	3	-0.4	3	0.1	10	0.3
N92000002	Northern Ireland	8	0.5	18	1.3	-10	-1.1	-6	-0.5

The Labour Force Survey is tabulated by region of residence.

1. Economically active = Employment plus Unemployment.

2. Denominator = all persons aged 16 to 64.

3. Denominator = total economically active

Source: Labour Force Survey
Labour market statistics enquiries: labour.market@ons.gov.uk

REGIONAL SUMMARY

23(2) Regional summary of Workforce Jobs

Thousands,
seasonally adjusted

Area Codes	Area Names	December 2019	Change on September 2019
K02000001	United Kingdom	35,832	67
K03000001	Great Britain	34,904	68
E92000001	England	30,615	63
E12000001	North East	1,211	-15
E12000002	North West	3,796	-53
E12000003	Yorkshire and The Humber	2,782	27
E12000004	East Midlands	2,448	-1
E12000005	West Midlands	2,941	-21
E12000006	East	3,269	40
E12000007	London	6,134	43
E12000008	South East	4,973	42
E12000009	South West	3,061	1
W92000004	Wales	1,467	-27
S92000003	Scotland	2,822	32
N92000002	Northern Ireland	921	0

Workforce jobs are mainly sourced from employer surveys and are tabulated by region of workplace.

HM Forces stationed abroad are included in the UK workforce jobs estimates but not in the regional estimates. The UK workforce jobs estimates therefore do not equal the sum of the regional estimates.