

Statistical bulletin

# Employment in the UK: December 2019

Estimates of employment, unemployment and economic inactivity for the UK.



Contact:  
Bob Watson  
[labour.supply@ons.gov.uk](mailto:labour.supply@ons.gov.uk)  
+44 (0)1633 455070

Release date:  
17 December 2019

Next release:  
21 January 2020

## Table of contents

1. [Other pages in this release](#)
2. [Main points for August to October 2019](#)
3. [Employment](#)
4. [Unemployment](#)
5. [Economic inactivity](#)
6. [Employment data](#)
7. [Glossary](#)
8. [Measuring the data](#)
9. [Strengths and limitations](#)
10. [Related links](#)

# 1 . Other pages in this release

Other commentary from the latest labour market data can be found on the following pages:

- [Labour market overview](#)
- [Average weekly earnings in Great Britain](#)
- [Vacancies and jobs](#)

## 2 . Main points for August to October 2019

- The UK employment rate was estimated at 76.2%, 0.4 percentage points higher than a year earlier but little changed on the previous quarter; despite just reaching a new record high, the employment rate has been broadly flat over the last few quarters.
- The UK unemployment rate was estimated at 3.8%, 0.3 percentage points lower than a year earlier but largely unchanged on the previous quarter.
- The UK economic inactivity rate was estimated at 20.8%, 0.2 percentage points lower than a year earlier but largely unchanged on the previous quarter.

The data in this bulletin come from the Labour Force Survey, a survey of households. It is not practical to survey every household each quarter, so these statistics are estimates based on a large sample.

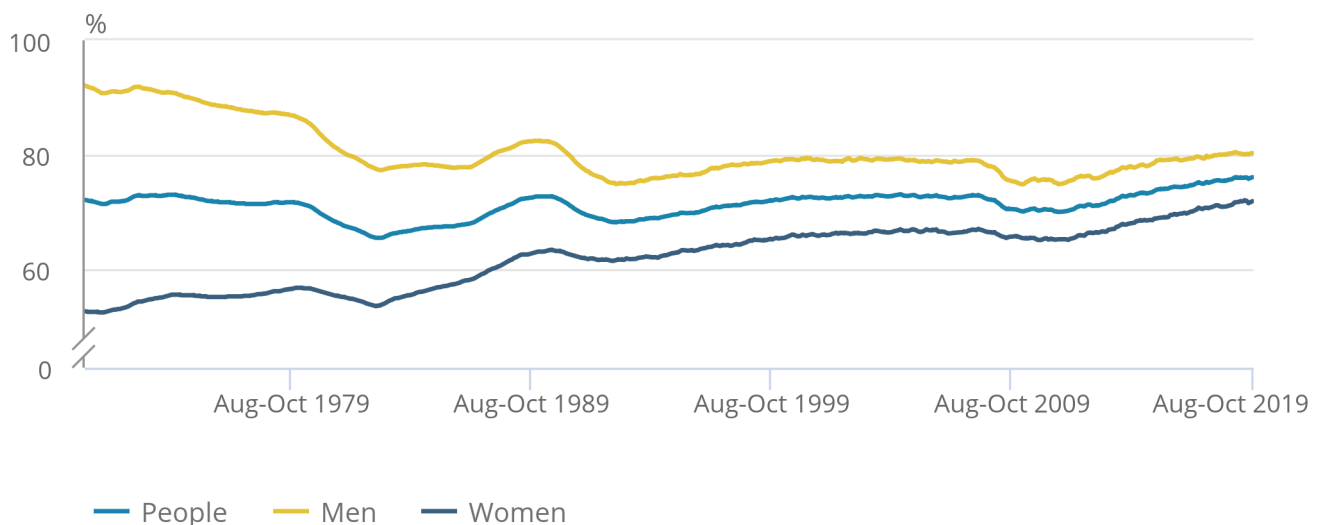
### 3 . Employment

**Figure 1: The employment rate for all people increased 0.4 percentage points on the year to a record high of 76.2%**

UK employment rates (aged 16 to 64 years), seasonally adjusted, January to March 1971 to August to October 2019

**Figure 1: The employment rate for all people increased 0.4 percentage points on the year to a record high of 76.2%**

UK employment rates (aged 16 to 64 years), seasonally adjusted, January to March 1971 to August to October 2019



Source: Office for National Statistics – Labour Force Survey

[Employment](#) measures the number of people aged 16 years and over in paid work. The employment rate is the proportion of people aged between 16 and 64 years who are in paid work.

Estimated employment rates for men and women aged between 16 and 64 years have generally been increasing since early 2012 but have levelled off in recent periods (as seen in Figure 1). For August to October 2019:

- the estimated employment rate for people was a record high of 76.2%; this is 0.4 percentage points up on the year, but largely unchanged on the quarter
- the estimated employment rate for men was 80.4%; this is 0.1 percentage points up on the year and on the quarter
- the estimated employment rate for women was 72.0%; this is 0.8 percentage points up on the year, but 0.1 percentage points down on the quarter

The increase in the employment rate for women in recent years is partly a result of changes to the State Pension age for women, resulting in fewer women retiring between the ages of 60 and 65 years.

Estimates for August to October 2019 show 32.80 million people aged 16 years and over in employment, 309,000 more than a year earlier. This annual increase was mainly driven by women (up 235,000 on the year) and full-time workers (up 272,000 on the year).

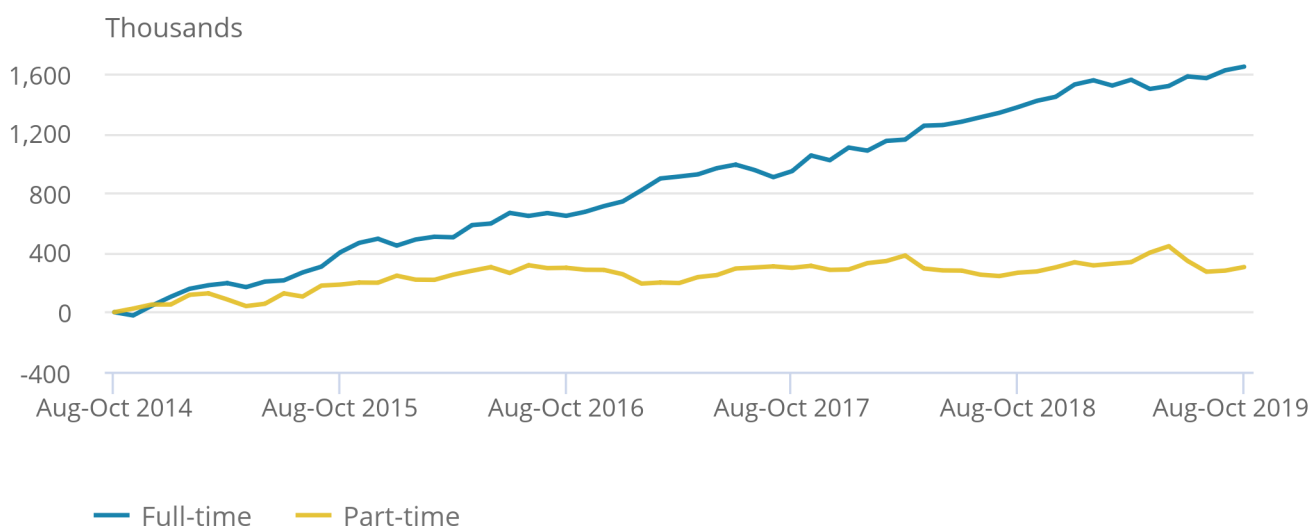
There was a 24,000 increase in employment on the quarter. This was driven by a quarterly increase for men (up 54,000) and full-time employees (up 50,000 to a record high of 20.71 million), but partly offset by a 30,000 decrease for women and a 61,000 decrease for part-time employees.

**Figure 2: The number of full-time workers continues to increase while the number of part-time workers has been broadly flat for the last few years**

UK employment levels change for full-time and part-time workers (aged 16 years and over), seasonally adjusted, August to October 2014 to August to October 2019

Figure 2: The number of full-time workers continues to increase while the number of part-time workers has been broadly flat for the last few years

UK employment levels change for full-time and part-time workers (aged 16 years and over), seasonally adjusted, August to October 2014 to August to October 2019



Source: Office for National Statistics – Labour Force Survey

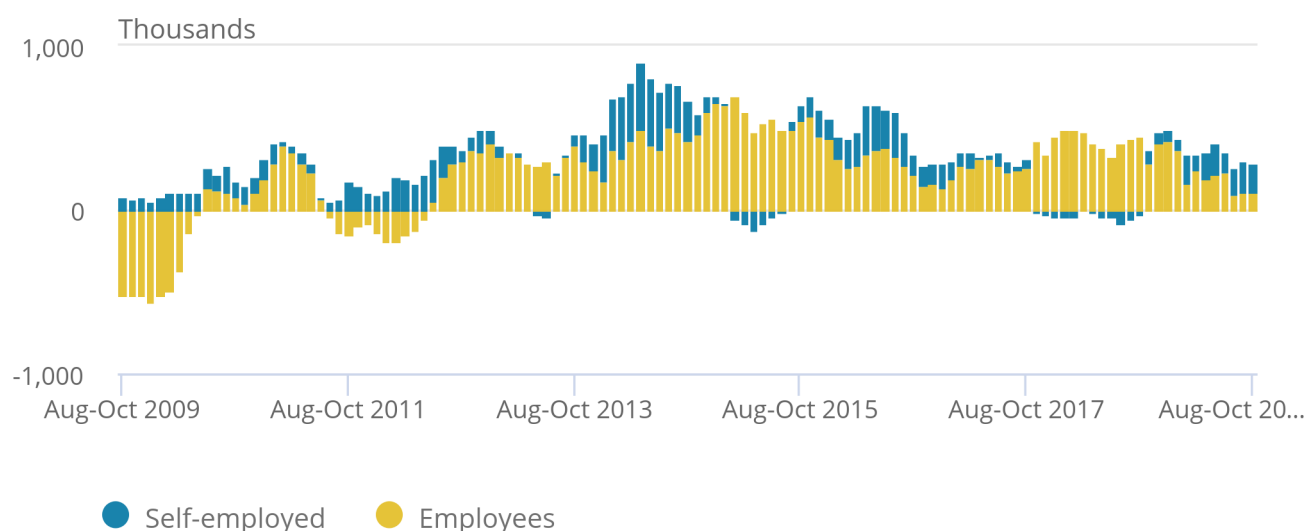
Increases in the number of full-time workers have been driving increases in employment in recent years, while the number of part-time workers has been relatively flat in comparison (as seen in Figure 2). In August to October 2019 it is estimated that full-time employment reached a record high of 24.24 million.

### Figure 3: The annual increase in the number of self-employed people was two-thirds larger than the annual increase in the number of employees

UK employees and self-employed people annual changes (aged 16 years and over), seasonally adjusted, August to October 2009 to August to October 2019

### Figure 3: The annual increase in the number of self-employed people was two-thirds larger than the annual increase in the number of employees

UK employees and self-employed people annual changes (aged 16 years and over), seasonally adjusted, August to October 2009 to August to October 2019



Source: Office for National Statistics – Labour Force Survey

Looking at the estimates for August to October 2019 by type of employment:

- there were 27.66 million paid employees (84.3% of all people in employment), 109,000 more than a year earlier
- there were a record 4.96 million self-employed people (15.1% of all people in employment), 182,000 more than a year earlier

Since the latter half of 2012, the annual increases for employees have generally been greater than for the self-employed. In recent periods this has reversed (as seen in Figure 3), and in August to October 2019, the annual increase in the number of self-employed people was two-thirds larger than the annual increase in the number of employees.

The annual growth in self-employment comprised a 96,000 increase for men and an 86,000 increase for women. This latter increase was the largest since the year to February to April 2017.

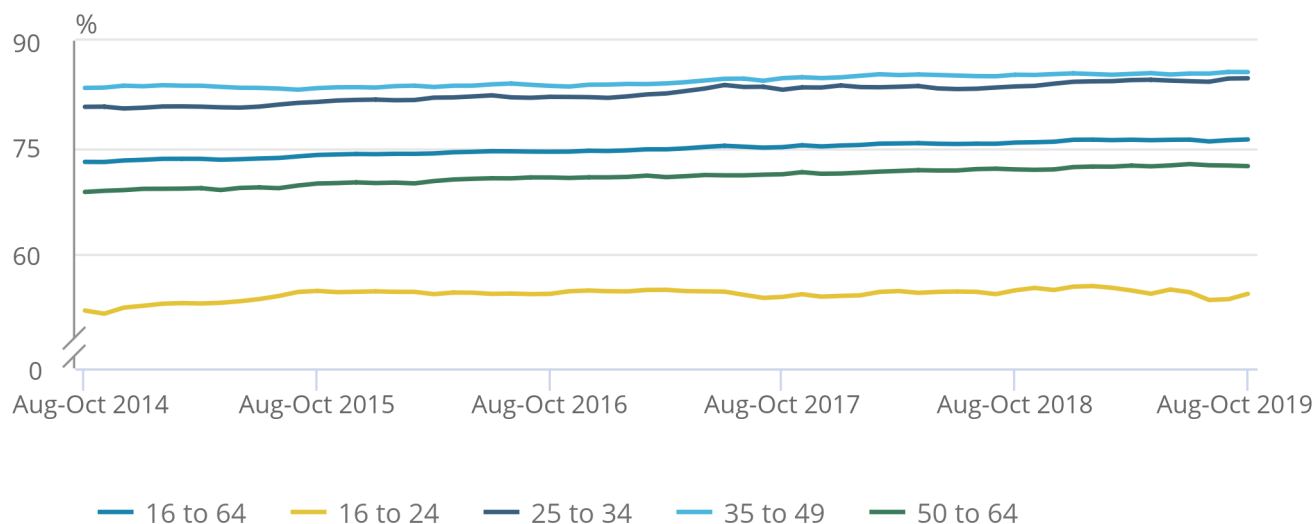
These estimates for paid employees and self-employed people make up over 99% of all people in employment in the UK. The total employment figure also includes two other minor categories as explained in the [Guide to labour market statistics](#).

**Figure 4: In the last few years, employment rates have steadily increased for all age groups except 16- to 24-year-olds**

UK employment rates by age, seasonally adjusted, August to October 2014 to August to October 2019

## Figure 4: In the last few years, employment rates have steadily increased for all age groups except 16- to 24-year-olds

UK employment rates by age, seasonally adjusted, August to October 2014 to August to October 2019



Source: Office for National Statistics – Labour Force Survey

Looking at employment rate changes between August to October 2014 and August to October 2019 by age group (Figure 4), most age groups have shown continuous steady growth in the employment rate, consistent with the headline employment rate. The exception is the 16- to 24-year-old employment rate which does not behave like the age bands between 25 and 64 years. This is partly because of the different way in which full-time students interact with the labour market.

## Hours worked

Since estimates began in 1971, [total hours worked](#) by women have generally increased, reflecting increases in both the employment rate for women and the UK population. In contrast, total hours worked by men have been relatively stable, with the level in August to October 2019 being virtually the same as the level in January to March 1971 (628 million hours). This is because falls in the employment rate for men, and increases in the share of part-time working have been roughly offset by population increases.

Between August to October 2018 and August to October 2019, total actual weekly hours worked in the UK increased by 1.0% (to reach a record high of 1.06 billion hours), while average actual weekly hours increased by 0.1% (to 32.2 hours). Therefore, the annual increase in total hours was mainly driven by the 1.0% increase in employment over the last year.

In August to October 2019, men worked an average of 36.3 hours per week, a decrease of 0.2 hours compared with a year earlier. In contrast, the average actual weekly hours for women increased by 0.3 hours over the year, to a record high of 27.6 hours. Total actual weekly hours worked by women also increased to a record high, of 427.44 million hours.

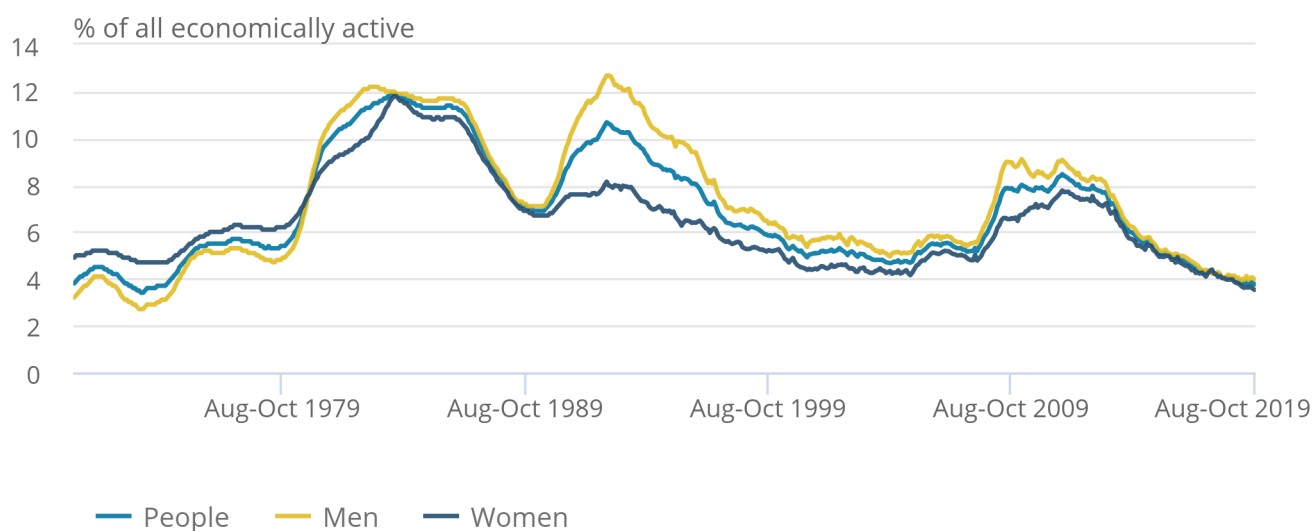
## 4 . Unemployment

**Figure 5: Unemployment rates have generally been falling for the last six years**

UK unemployment rates (aged 16 years and over), seasonally adjusted, January to March 1971 to August to October 2019

Figure 5: Unemployment rates have generally been falling for the last six years

UK unemployment rates (aged 16 years and over), seasonally adjusted, January to March 1971 to August to October 2019



Source: Office for National Statistics – Labour Force Survey

[Unemployment](#) measures people without a job who have been actively seeking work within the last four weeks and are available to start work within the next two weeks. The unemployment rate is not the proportion of the total population who are unemployed. It is the proportion of the economically active population (those in work plus those seeking and available to work) who are unemployed.

Estimated unemployment rates for both men and women aged 16 years and over have generally been falling since late 2013, but have levelled off in recent periods (as seen in Figure 5).

For August to October 2019:

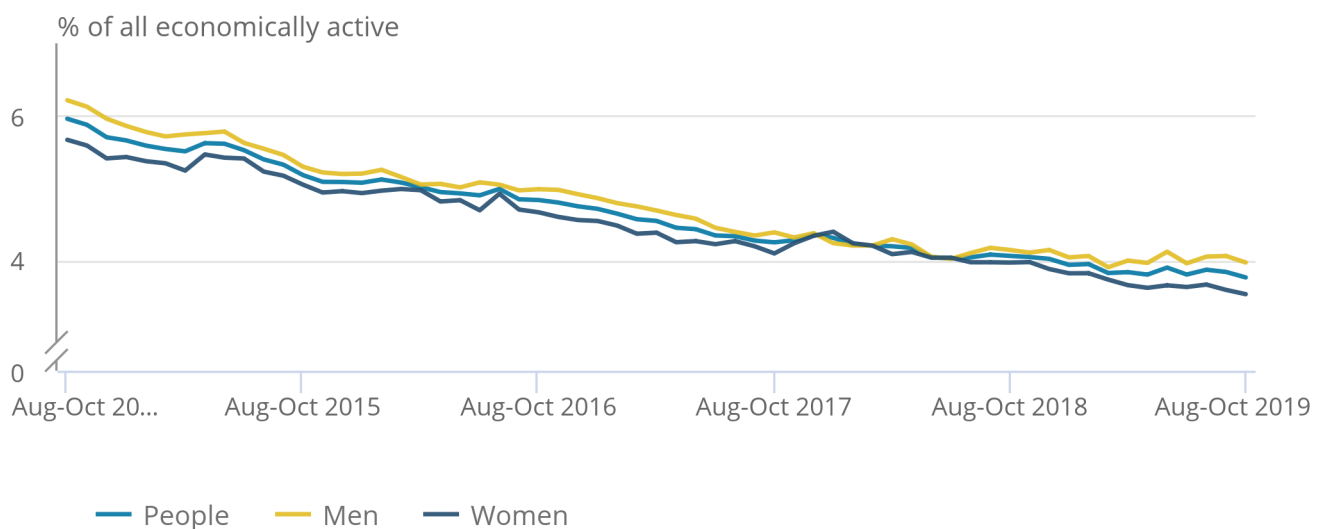
- the estimated UK unemployment rate for all people was 3.8%, 0.3 percentage points lower than a year earlier but largely unchanged on the previous quarter
- the estimated UK unemployment rate for men was 4.0%, 0.2 percentage points lower than a year earlier but largely unchanged on the previous quarter
- the estimated UK unemployment rate for women was a record low of 3.5%, down 0.4 percentage points on the year and down 0.1 percentage points on the quarter

**Figure 6: The steady fall in unemployment rates for men and women over the last few years has slowed in recent periods**

UK unemployment rates (aged 16 years and over), seasonally adjusted, August to October 2014 to August to October 2019

## Figure 6: The steady fall in unemployment rates for men and women over the last few years has slowed in recent periods

UK unemployment rates (aged 16 years and over), seasonally adjusted, August to October 2014 to August to October 2019



Source: Office for National Statistics – Labour Force Survey

Between August to October 2014 and August to October 2019:

- the estimated unemployment rate for all people fell from 6.0% to 3.8%
- the estimated unemployment rate for men fell from 6.2% to 4.0%
- the estimated unemployment rate for women fell from 5.7% to 3.5%

For August to October 2019, an estimated 1.28 million people were unemployed. This is 93,000 fewer than a year earlier and 673,000 fewer than five years earlier.

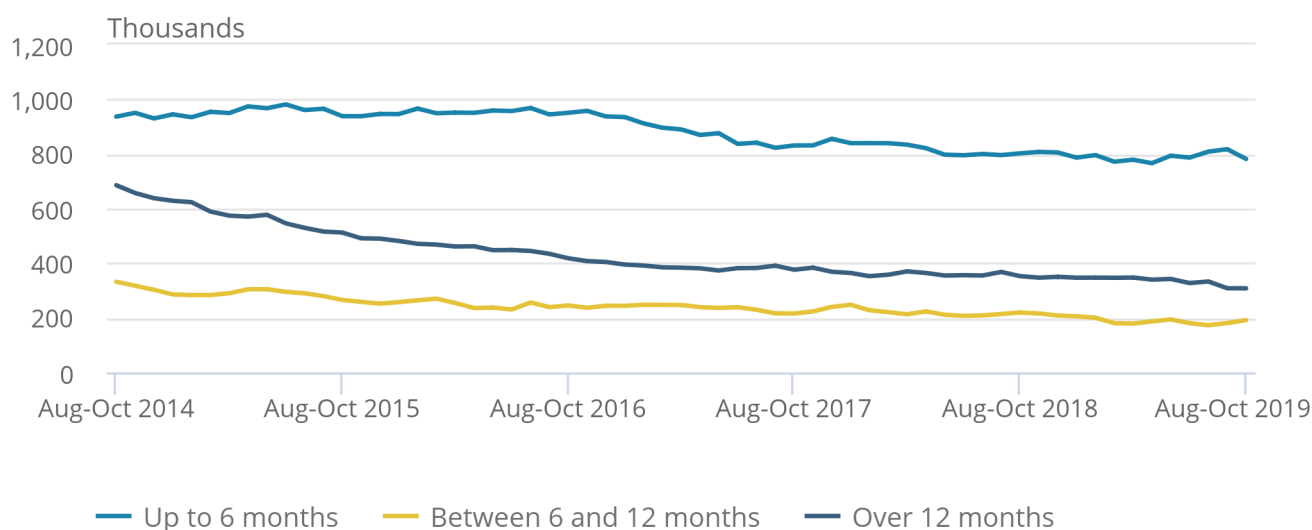


## Figure 7: Long-term unemployment continues to fall

Unemployment in the UK by duration (aged 16 years and over), seasonally adjusted, August to October 2014 to August to October 2019

### Figure 7: Long-term unemployment continues to fall

Unemployment in the UK by duration (aged 16 years and over), seasonally adjusted, August to October 2014 to August to October 2019



Source: Office for National Statistics – Labour Force Survey

Looking in more detail at this fall of 673,000 over the last five years:

- the estimated number of people unemployed for up to six months fell by 155,000 to 782,000, with women in this category reaching a record low of 368,000
- for those unemployed for over six and up to 12 months, the number fell by 140,000 to 191,000
- the largest fall was for long-term unemployment (those unemployed for over one year), which was down 377,000 to 308,000

## 5 . Economic inactivity

[Economic inactivity](#) measures people without a job but who are not classed as unemployed because they have not been actively seeking work within the last four weeks and/or they are unable to start work within the next two weeks. Our headline measure of economic inactivity is for those aged between 16 and 64 years.

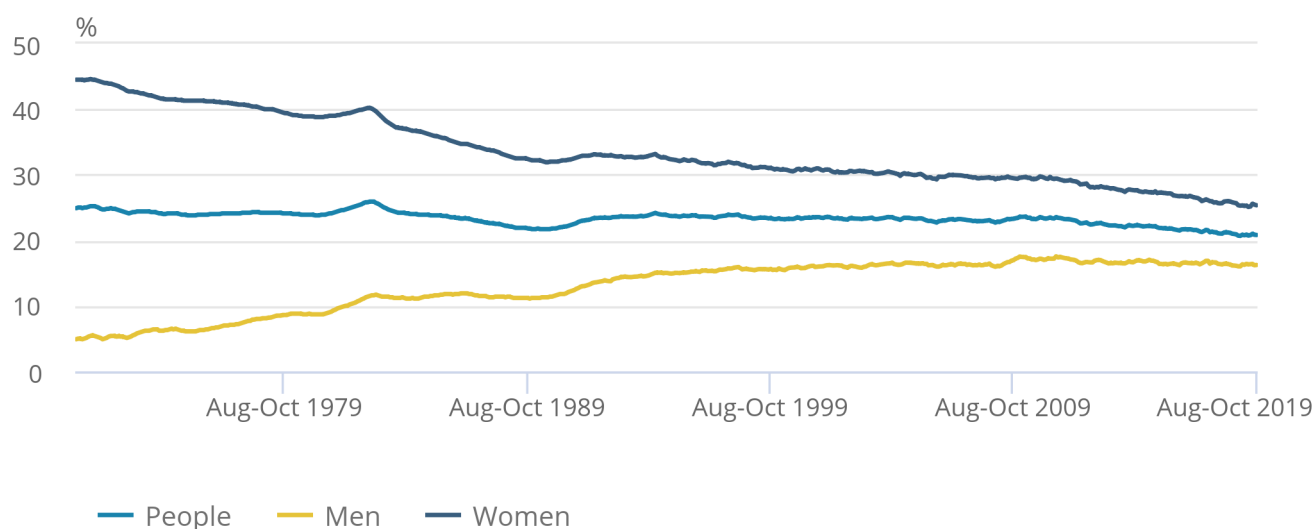
Since comparable records began in 1971, the economic inactivity rate for all people aged between 16 and 64 years has been generally falling (although it increased during recessions). This is because of a gradual fall in the economic inactivity rate for women (as seen in Figure 8).

**Figure 8: Overall inactivity rate for people aged between 16 and 64 years was 20.8%, down 0.2 percentage points on the year**

UK economic inactivity rate (all people aged 16 to 64 years), seasonally adjusted, January to March 1971 to August to October 2019

**Figure 8: Overall inactivity rate for people aged between 16 and 64 years was 20.8%, down 0.2 percentage points on the year**

UK economic inactivity rate (all people aged 16 to 64 years), seasonally adjusted, January to March 1971 to August to October 2019



Source: Office for National Statistics – Labour Force Survey

For people aged between 16 and 64 years, for August to October 2019:

- the estimated economic inactivity rate for all people was 20.8%, down 0.2 percentage points on the year but largely unchanged on the quarter
- the estimated economic inactivity rate for men was 16.2%, up 0.1 percentage points on the year but down 0.1 percentage points on the quarter
- the estimated economic inactivity rate for women was 25.3%, down 0.5 percentage points on the year but up 0.2 percentage points on the quarter

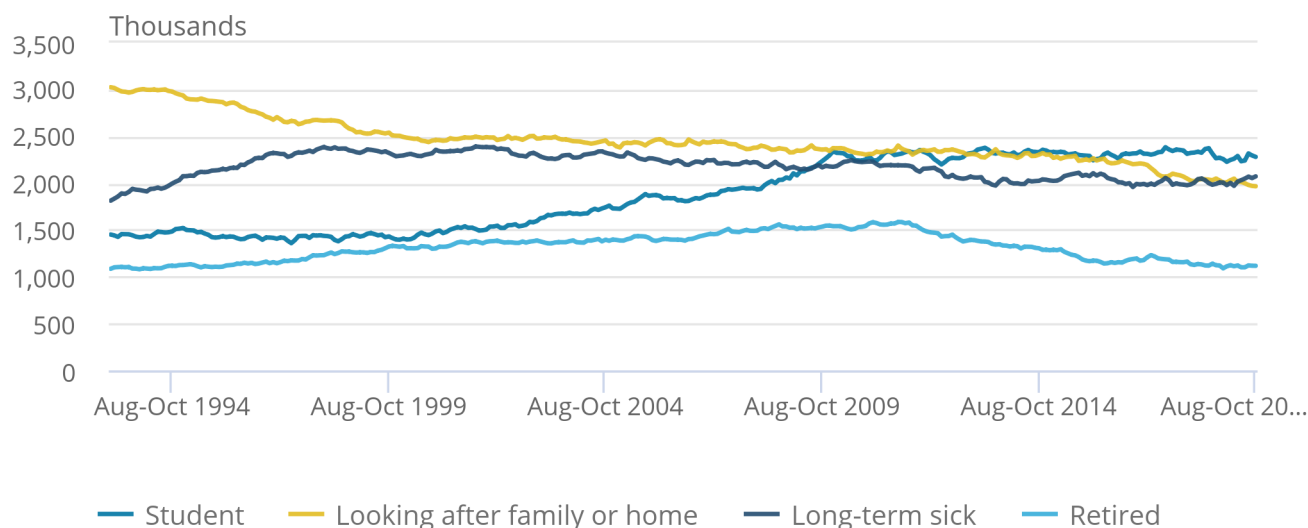
Estimates for August to October 2019 show 8.61 million people aged between 16 and 64 years not in the labour force (economically inactive). This was 60,000 fewer than a year earlier and 447,000 fewer than five years earlier.

**Figure 9: The number of people who are inactive because they are looking after family or home is at a record low**

Inactive people (aged 16 to 64 years) by reason in the UK, seasonally adjusted, March to May 1993 to August to October 2019

## Figure 9: The number of people who are inactive because they are looking after family or home is at a record low

Inactive people (aged 16 to 64 years) by reason in the UK, seasonally adjusted, March to May 1993 to August to October 2019



Source: Office for National Statistics – Labour Force Survey

Looking in more detail at the estimated fall of 447,000 in economic inactivity over the last five years, the categories showing the largest decreases were people looking after the family or home (down 338,000 to a record low of 1.97 million) and those retiring from the labour force (down 188,000).

The fall was almost entirely driven by women, with a decrease of 398,000. This reflects changes to the State Pension age, resulting in fewer women retiring between the ages of 60 and 65 years, as well as more women in younger age groups participating in the labour market.

## 6 . Employment data

### [Employment, unemployment and economic inactivity](#)

Dataset A05 SA | Updated on 17 December 2019

Estimates of UK employment, unemployment and economic inactivity broken down into age bands.

### [Full-time, part-time and temporary workers](#)

Dataset EMP01 SA | Updated on 17 December 2019

Estimates of UK employment including a breakdown by sex, type of employment, and full-time and part-time working.

### [Actual weekly hours worked](#)

Dataset HOUR01 SA | Updated on 17 December 2019

Estimates for the hours that people in employment work in the UK.

### [Unemployment by age and duration](#)

Dataset UNEM01 SA | Updated on 17 December 2019

Estimates of unemployment in the UK including a breakdown by sex, age group and the length of time people are unemployed.

### [Economic inactivity by reason](#)

Dataset INAC01 SA | Updated on 17 December 2019

Estimates of those not in the UK labour force measured by the reasons given for inactivity.

### [Labour Force Survey sampling variability](#)

Dataset A11 | Updated on 17 December 2019

Labour Force Survey sampling variability (95% confidence intervals).

## 7 . Glossary

### Actual and usual hours worked

Statistics for [usual hours worked](#) measure how many hours people usually work per week. Compared with [actual hours worked](#) they are not affected by absences and so can provide a better measure of normal working patterns. For example, a person who usually works 37 hours a week but who was on holiday for a week would be recorded as working zero actual hours for that week, while usual hours would be recorded as 37 hours.

### Economic inactivity

People not in the labour force (also known as [economically inactive](#)) are not in employment but do not meet the internationally accepted definition of unemployment because they have not been seeking work within the last four weeks and/or they are unable to start work in the next two weeks. The economic inactivity rate is the proportion of people aged between 16 and 64 years who are not in the labour force.

### Employment

[Employment](#) measures the number of people in paid work, or who had a job that they were temporarily away from (for example, because they were on holiday or off sick). This differs from the number of jobs because some people have more than one job. The employment rate is the proportion of people aged between 16 and 64 years who are in employment. A more detailed explanation is available in our [Guide to labour market statistics](#).

## Unemployment

[Unemployment](#) measures people without a job who have been actively seeking work within the last four weeks and are available to start work within the next two weeks. The unemployment rate is not the proportion of the total population who are unemployed. It is the proportion of the economically active population (those in work plus those seeking and available to work) who are unemployed.

A [more detailed glossary](#) is available.

## 8 . Measuring the data

This bulletin relies on data collected from the [Labour Force Survey \(LFS\)](#), the largest household survey in the UK.

More quality and methodology information on strengths, limitations, appropriate uses, and how the data were created is available in the [Labour Force Survey \(LFS\) QMI](#).

The [LFS performance and quality monitoring reports](#) provide data on response rates and other quality-related issues for the LFS.

## 9 . Strengths and limitations

The figures in this bulletin come from the Labour Force Survey (LFS), which gathers information from a sample of households across the UK rather than from the whole population. The sample is designed to be as accurate as possible given practical limitations such as time and cost constraints. Results from sample surveys are always estimates, not precise figures. This can have an impact on how changes in the estimates should be interpreted, especially for short-term comparisons.

As the number of people available in the sample gets smaller, the variability of the estimates that we can make from that sample size gets larger. Estimates for small groups (for example, unemployed people aged between 16 and 17 years), which are based on small subsets of the LFS sample, are less reliable and tend to be more volatile than for larger aggregated groups (for example, the total number of unemployed people).

In general, changes in the numbers (and especially the rates) reported in this bulletin between three-month periods are small and are not usually greater than the level that can be explained by sampling variability. Short-term movements in reported rates should be considered alongside longer-term patterns in the series and corresponding movements in other sources to give a fuller picture.

## Comparability

The data in this bulletin follow internationally accepted definitions specified by the [International Labour Organization](#). This ensures that the estimates for the UK are comparable with those for other countries.

Further information is available in [A guide to labour market statistics](#).

Table 1: Summary of UK employment estimates for August to October 2019, seasonally adjusted

	Level	Sampling variability of level (*)	Change on quarter	Sampling variability of change on quarter (*)	Change on year	Sampling variability of change on year (*)
Employment (000s, aged 16 and over)	32,801	± 177	24	± 152	309	± 238
Employment rate (aged 16 to 64)	76.2%	± 0.4	0.0	± 0.3	0.4	± 0.5
Average weekly hours	32.2	± 0.2	0.2	± 0.2	0.0	± 0.2
Unemployment (000s, aged 16 and over)	1,281	± 70	-13	± 74	-93	± 100
Unemployment rate (aged 16 and over)	3.8%	± 0.2	0.0	± 0.2	-0.3	± 0.3
Economically active (000s, aged 16 and over)	34,082	± 170	11	± 148	216	± 228
Economic activity rate (aged 16 to 64)	79.2%	± 0.4	0.0	± 0.3	0.2	± 0.5
Economically inactive (000s, aged 16 to 64)	8,606	± 154	19	± 135	-60	± 207
Economic inactivity rate (aged 16 to 64)	20.8%	± 0.4	0.0	± 0.3	-0.2	± 0.5
Redundancies (000s, aged 16 and over)	118	± 21	21	± 27	35	± 26

Source: Office for National Statistics - Labour Force Survey

#### Notes

1. The sampling variability estimates are for 95% confidence intervals and are calculated on data that are not seasonally adjusted. [Back to table](#)
2. This data is part of data table A11: Labour Force Survey sampling variability, which is part of the Labour market overview, UK release. [Back to table](#)

## 10 . Related links

### [Labour market economic commentary](#)

Article | Updated on 17 December 2019

Additional economic analysis of the latest UK labour market headline statistics and long-term trends.

### [Regional labour market statistics in the UK](#)

Statistical Bulletin | Updated on 17 December 2019

Regional, local authority and Parliamentary constituency breakdowns of changes in UK employment, unemployment, economic inactivity and other employment-related statistics.

### [UK and non-UK people in the labour market](#)

Article | Last updated on 12 November 2019

Estimates of labour market activity by nationality and country of birth.

### [Public sector employment](#)

Statistical Bulletin | Updated on 17 December 2019

Quarterly estimates of the number of people employed in the public and private sectors in the UK. The public sector comprises central government, local government and public corporations.

### [Young people not in education, employment or training](#)

Statistical Bulletin | Last updated on 21 November 2019

Quarterly bulletin examining estimates of men and women aged between 16 and 24 years in the UK who are not studying or in employment.

### [Working and workless households in the UK](#)

Statistical Bulletin | Last updated on 27 November 2019

Commentary on quarterly estimates of the economic status of UK households and the people living in them.

### [Employees in the UK](#)

Statistical Bulletin | Last updated on 26 September 2019

The Business Register and Employment Survey (BRES) is the official source of employee and employment estimates by detailed geography and industry.

# Index of Tables

The table below provides an index of the tables appearing in this Statistical Bulletin and it shows how these table numbers match up with the Excel spreadsheet datasets which are available on the website at:

<https://www.ons.gov.uk/employmentandlabourmarket/peopleinwork/employmentandemployeetypes/bulletins/uklabourmarket/december2019/relateddata>

The complete set of labour market tables is available from the Labour Market Overview bulletin.

Statistical Bulletin table number	Table description	Dataset
<b>SUMMARY</b>		
1	Labour Force Survey Summary	<a href="#">Dataset A02 SA</a>
2 (*)	Labour market status by age group	<a href="#">Dataset A05 SA</a>
<b>EMPLOYMENT AND JOBS</b>		
3	Full-time, part-time & temporary workers	<a href="#">Dataset EMP01 SA</a>
4	Public and private sector employment	<a href="#">Dataset EMP02</a>
4(1)	Public sector employment by industry	<a href="#">Dataset EMP03</a>
5	Workforce jobs summary	<a href="#">Dataset JOBS01</a>
6 (**)	Workforce jobs by industry	<a href="#">Dataset JOBS02</a>
7	Actual weekly hours worked	<a href="#">Dataset HOUR01 SA</a>
7(1)	Usual weekly hours worked	<a href="#">Dataset HOUR02 SA</a>
<b>NON-UK WORKERS</b>		
8	Employment by country of birth and nationality	<a href="#">Dataset EMP06</a>
8(1)	Unemployment and economic inactivity by country of birth and nationality	<a href="#">Dataset A12</a>
<b>UNEMPLOYMENT</b>		
9	Unemployment by age and duration	<a href="#">Dataset UNEM01 SA</a>
<b>ECONOMIC ACTIVITY AND INACTIVITY</b>		
10(*)	Economic activity by age	<a href="#">Dataset A05 SA</a>
11	Economic inactivity by reason	<a href="#">Dataset INAC01 SA</a>
12	Labour market and educational status of young people	<a href="#">Dataset A06 SA</a>
<b>EARNINGS</b>		
13	Average Weekly Earnings (nominal) - Total pay	<a href="#">Dataset EARN01</a>
14	Average Weekly Earnings (nominal) - Bonus pay	<a href="#">Dataset EARN01</a>
15	Average Weekly Earnings (nominal) - Regular pay	<a href="#">Dataset EARN01</a>
16	Average Weekly Earnings real and nominal (summary table)	<a href="#">Dataset EARN01</a>
<b>INTERNATIONAL SUMMARY</b>		
17	International comparisons of employment and unemployment	<a href="#">Dataset A10</a>
<b>LABOUR DISPUTES</b>		
18	Labour disputes	<a href="#">Dataset LABD01</a>
<b>VACANCIES</b>		
19	Vacancies by size of business	<a href="#">Dataset VACS03</a>
20	Vacancies and unemployment	<a href="#">Dataset VACS01</a>
21	Vacancies by industry	<a href="#">Dataset VACS02</a>
<b>REDUNDANCIES</b>		
22	Redundancies levels and rates	<a href="#">Dataset RED01 SA</a>
<b>REGIONAL SUMMARY</b>		
23	Regional labour market summary	<a href="#">Dataset A07</a>

(\*) Tables 2 and 10 in the Statistical Bulletin pdf file have been amalgamated into one spreadsheet (Dataset A05 SA).

(\*\*) Table JOBS02 provides more detail than Table 6 in the Statistical Bulletin pdf file.

The following symbols are used in the tables: p provisional, r revised, .. Not available, \* suppressed due to small sample size.

The four-character identification codes appearing in the tables are the ONS references for the data series appearing in the Labour Market Statistics dataset which is available on the website at:

<https://www.ons.gov.uk/employmentandlabourmarket/peopleinwork/employmentandemployeetypes/datasets/labourmarketstatistics>



# SUMMARY

## 1 Summary of headline LFS<sup>1</sup> indicators

United Kingdom (thousands)  
seasonally adjusted

		LFS household population <sup>1</sup>		Headline indicators					
		Employment				Unemployment		Inactivity	
		Level		Rate <sup>2</sup>		Level		Rate <sup>3</sup>	
		All aged 16 & over	All aged 16 to 64	All aged 16 & over	All aged 16 to 64	All aged 16 & over	All aged 16 to 64	All aged 16 & over	All aged 16 to 64
		MGSL	LF2O	MGRZ	LF24	MGSC	MG SX	LF2M	LF2S
<b>People</b>									
	Aug-Oct 2017	52,811	41,181	32,094	75.1	1,422	4.2	8,864	21.5
	Aug-Oct 2018	53,093	41,271	32,492	75.7	1,373	4.1	8,666	21.0
	Nov-Jan 2019	53,161	41,291	32,714	76.1	1,338	3.9	8,549	20.7
	Feb-Apr 2019	53,229	41,310	32,746	76.1	1,304	3.8	8,581	20.8
	May-Jul 2019	53,298	41,330	32,777	76.1	1,294	3.8	8,587	20.8
	<b>Aug-Oct 2019</b>	<b>53,368</b>	<b>41,355</b>	<b>32,801</b>	<b>76.2</b>	<b>1,281</b>	<b>3.8</b>	<b>8,606</b>	<b>20.8</b>
	Change on quarter	71	24	24	0.0	-13	0.0	19	0.0
	Change %	0.1	0.1	0.1		-1.0		0.2	
	Change on year	275	84	309	0.4	-93	-0.3	-60	-0.2
	Change %	0.5	0.2	1.0		-6.8		-0.7	
<b>Men</b>		MGSM	YBTG	MGSA	MGSV	MGSD	MG SY	YBSO	YBTM
	Aug-Oct 2017	25,819	20,466	16,967	79.4	777	4.4	3,452	16.9
	Aug-Oct 2018	25,981	20,526	17,240	80.3	744	4.1	3,314	16.1
	Nov-Jan 2019	26,019	20,538	17,317	80.5	728	4.0	3,290	16.0
	Feb-Apr 2019	26,056	20,550	17,290	80.3	719	4.0	3,341	16.3
	May-Jul 2019	26,093	20,562	17,261	80.2	710	4.0	3,364	16.4
	<b>Aug-Oct 2019</b>	<b>26,132</b>	<b>20,576</b>	<b>17,315</b>	<b>80.4</b>	<b>715</b>	<b>4.0</b>	<b>3,340</b>	<b>16.2</b>
	Change on quarter	38	14	54	0.1	4	0.0	-24	-0.1
	Change %	0.1	0.1	0.3		0.6		-0.7	
	Change on year	151	51	74	0.1	-29	-0.2	26	0.1
	Change %	0.6	0.2	0.4		-3.9		0.8	
<b>Women</b>		MG SN	LF2P	MG SB	LF25	MG SE	MG SZ	LF2N	LF2T
	Aug-Oct 2017	26,992	20,715	15,127	70.8	645	4.1	5,412	26.1
	Aug-Oct 2018	27,112	20,745	15,252	71.2	629	4.0	5,351	25.8
	Nov-Jan 2019	27,143	20,753	15,396	71.8	611	3.8	5,259	25.3
	Feb-Apr 2019	27,173	20,760	15,456	72.0	586	3.7	5,240	25.2
	May-Jul 2019	27,204	20,768	15,517	72.1	583	3.6	5,223	25.2
	<b>Aug-Oct 2019</b>	<b>27,236</b>	<b>20,778</b>	<b>15,487</b>	<b>72.0</b>	<b>566</b>	<b>3.5</b>	<b>5,266</b>	<b>25.3</b>
	Change on quarter	32	10	-30	-0.1	-18	-0.1	42	0.2
	Change %	0.1	0.0	-0.2		-3.0		0.8	
	Change on year	124	33	235	0.8	-64	-0.4	-85	-0.5
	Change %	0.5	0.2	1.5		-10.1		-1.6	

Source: Labour Force Survey

Labour market statistics enquiries: labour.market@ons.gov.uk

1. The Labour Force Survey (LFS) is a survey of households in the UK.

2. The headline employment rate is the number of people aged 16 to 64 in employment divided by the population aged 16 to 64.

3. The headline unemployment rate is the number of unemployed people (aged 16+) divided by the economically active population (aged 16+). The economically active population is defined as those in employment plus those who are unemployed.

4. The headline inactivity rate is the number of people aged 16 to 64 divided by the population aged 16-64.

### Note on headline employment, unemployment and inactivity rates

The headline employment and inactivity rates are based on the population aged 16 to 64 but the headline unemployment rate is based on the economically active population aged 16 and over. The employment and inactivity rates for those aged 16 and over are affected by the inclusion of the retired population in the denominators and are therefore less meaningful than the rates for those aged from 16 to 64. However, for the unemployment rate for those aged 16 and over, no such effect occurs as the denominator for the unemployment rate is the economically active population which only includes people in work or actively seeking and able to work.

### Note on headline employment, unemployment and inactivity levels

The headline employment and unemployment levels are for those aged 16 and over; they measure all people in work or actively seeking and able to work. However, the headline inactivity level is for those aged 16 to 64. The inactivity rate for those aged 16 and over is less meaningful as it includes elderly people who have retired from the labour force.

# SUMMARY

## 2(1) Labour market status by age group

United Kingdom (thousands) seasonally adjusted

		Aged 16 and over						Aged 16-64					
		Employment		Unemployment		Inactivity		Employment		Unemployment		Inactivity	
		Level	Rate	Level	Rate	Level	Rate	Level	Rate	Level	Rate	Level	Rate
		MGRZ	MGRS	MGSC	MGSX	MGSI	YBTC	LF2G	LF24	LF2I	LF2Q	LF2M	LF2S
People	Aug-Oct 2017	32,094	60.8	1,422	4.2	19,294	36.5	30,917	75.1	1,400	4.3	8,864	21.5
	Aug-Oct 2018	32,492	61.2	1,373	4.1	19,227	36.2	31,247	75.7	1,358	4.2	8,666	21.0
	Nov-Jan 2019	32,714	61.5	1,338	3.9	19,109	35.9	31,425	76.1	1,317	4.0	8,549	20.7
	Feb-Apr 2019	32,746	61.5	1,304	3.8	19,179	36.0	31,443	76.1	1,287	3.9	8,581	20.8
	May-Jul 2019	32,777	61.5	1,294	3.8	19,227	36.1	31,463	76.1	1,280	3.9	8,587	20.8
	<b>Aug-Oct 2019</b>	<b>32,801</b>	<b>61.5</b>	<b>1,281</b>	<b>3.8</b>	<b>19,286</b>	<b>36.1</b>	<b>31,493</b>	<b>76.2</b>	<b>1,256</b>	<b>3.8</b>	<b>8,606</b>	<b>20.8</b>
	Change on quarter	24	0.0	-13	0.0	59	0.1	30	0.0	-24	-0.1	19	0.0
	Change %	0.1		-1.0		0.3		0.1		-1.9		0.2	
	Change on year	309	0.3	-93	-0.3	59	-0.1	246	0.4	-102	-0.3	-60	-0.2
	Change %	1.0		-6.8		0.3		0.8		-7.5		-0.7	
Men		MGSA	MGSS	MGSD	MGSY	MGSJ	YBTD	YBSF	MGSV	YBSI	YBTJ	YBSO	YBTM
	Aug-Oct 2017	16,967	65.7	777	4.4	8,074	31.3	16,252	79.4	762	4.5	3,452	16.9
	Aug-Oct 2018	17,240	66.4	744	4.1	7,997	30.8	16,478	80.3	734	4.3	3,314	16.1
	Nov-Jan 2019	17,317	66.6	728	4.0	7,973	30.6	16,532	80.5	716	4.1	3,290	16.0
	Feb-Apr 2019	17,290	66.4	719	4.0	8,047	30.9	16,500	80.3	709	4.1	3,341	16.3
	May-Jul 2019	17,261	66.1	710	4.0	8,123	31.1	16,497	80.2	701	4.1	3,364	16.4
	<b>Aug-Oct 2019</b>	<b>17,315</b>	<b>66.3</b>	<b>715</b>	<b>4.0</b>	<b>8,103</b>	<b>31.0</b>	<b>16,538</b>	<b>80.4</b>	<b>699</b>	<b>4.1</b>	<b>3,340</b>	<b>16.2</b>
	Change on quarter	54	0.1	4	0.0	-20	-0.1	40	0.1	-2	0.0	-24	-0.1
	Change %	0.3		0.6		-0.2		0.2		-0.3		-0.7	
	Change on year	74	-0.1	-29	-0.2	106	0.2	60	0.1	-35	-0.2	26	0.1
	Change %	0.4		-3.9		1.3		0.4		-4.8		0.8	
Women		MGSB	MGST	MGSE	MGSZ	MGSK	YBTE	LF2H	LF25	LF2J	LF2R	LF2N	LF2T
	Aug-Oct 2017	15,127	56.0	645	4.1	11,220	41.6	14,665	70.8	637	4.2	5,412	26.1
	Aug-Oct 2018	15,252	56.3	629	4.0	11,231	41.4	14,769	71.2	625	4.1	5,351	25.8
	Nov-Jan 2019	15,396	56.7	611	3.8	11,136	41.0	14,892	71.8	602	3.9	5,259	25.3
	Feb-Apr 2019	15,456	56.9	586	3.7	11,132	41.0	14,943	72.0	578	3.7	5,240	25.2
	May-Jul 2019	15,517	57.0	583	3.6	11,104	40.8	14,966	72.1	579	3.7	5,223	25.2
	<b>Aug-Oct 2019</b>	<b>15,487</b>	<b>56.9</b>	<b>566</b>	<b>3.5</b>	<b>11,184</b>	<b>41.1</b>	<b>14,955</b>	<b>72.0</b>	<b>557</b>	<b>3.6</b>	<b>5,266</b>	<b>25.3</b>
	Change on quarter	-30	-0.2	-18	-0.1	79	0.2	-11	-0.1	-22	-0.1	42	0.2
	Change %	-0.2		-3.0		0.7		-0.1		-3.8		0.8	
	Change on year	235	0.6	-64	-0.4	-47	-0.4	186	0.8	-67	-0.5	-85	-0.5
	Change %	1.5		-10.1		-0.4		1.3		-10.8		-1.6	
		Aged 16-17						Aged 18-24					
		Employment		Unemployment		Inactivity		Employment		Unemployment		Inactivity	
		Level	Rate	Level	Rate	Level	Rate	Level	Rate	Level	Rate	Level	Rate
		YBTO	YBUA	YBVH	YBVK	YCAS	LWEX	YBTR	YBUD	YBVN	YBVQ	YCAV	LWFA
People	Aug-Oct 2017	345	24.4	110	24.1	963	67.9	3,474	61.6	410	10.6	1,760	31.2
	Aug-Oct 2018	321	23.1	95	22.8	977	70.1	3,513	63.0	400	10.2	1,665	29.8
	Nov-Jan 2019	318	22.9	91	22.2	984	70.6	3,540	63.7	409	10.4	1,608	28.9
	Feb-Apr 2019	339	24.3	86	20.3	967	69.5	3,470	62.7	394	10.2	1,672	30.2
	May-Jul 2019	351	25.2	84	19.3	957	68.8	3,430	62.2	404	10.5	1,681	30.5
	<b>Aug-Oct 2019</b>	<b>348</b>	<b>24.9</b>	<b>87</b>	<b>20.0</b>	<b>965</b>	<b>68.9</b>	<b>3,411</b>	<b>62.1</b>	<b>386</b>	<b>10.2</b>	<b>1,699</b>	<b>30.9</b>
	Change on quarter	-2	-0.3	3	0.7	8	0.1	-19	-0.1	-18	-0.4	17	0.4
	Change %	-0.7		3.9		0.9		-0.6		-4.5		1.0	
	Change on year	27	1.8	-8	-2.8	-11	-1.2	-103	-0.9	-14	-0.1	34	1.1
	Change %	8.4		-8.4		-1.1		-2.9		-3.6		2.0	
Men		YBTP	YBUB	YBVI	YBVL	YCAT	LWEY	YBTS	YBUE	YBVO	YBVR	YCAW	LWFB
	Aug-Oct 2017	162	22.3	54	24.9	511	70.3	1,759	61.1	249	12.4	872	30.3
	Aug-Oct 2018	155	21.7	55	26.1	503	70.6	1,847	64.8	231	11.1	771	27.1
	Nov-Jan 2019	154	21.6	48	23.6	511	71.7	1,827	64.4	250	12.0	761	26.8
	Feb-Apr 2019	160	22.4	45	22.1	508	71.2	1,764	62.4	248	12.3	816	28.9
	May-Jul 2019	164	23.0	46	22.0	502	70.5	1,745	61.9	246	12.3	826	29.3
	<b>Aug-Oct 2019</b>	<b>157</b>	<b>21.9</b>	<b>52</b>	<b>25.1</b>	<b>508</b>	<b>70.8</b>	<b>1,767</b>	<b>63.0</b>	<b>225</b>	<b>11.3</b>	<b>813</b>	<b>29.0</b>
	Change on quarter	-7	-1.1	6	3.0	6	0.3	23	1.0	-20	-1.0	-13	-0.3
	Change %	-4.4		13.2		1.1		1.3		-8.3		-1.5	
	Change on year	2	0.1	-2	-1.1	5	0.2	-79	-1.8	-6	0.2	42	1.9
	Change %	1.3		-4.3		1.0		-4.3		-2.5		5.5	
Women		YBTQ	YBUC	YBVJ	YBVM	YCAU	LWEZ	YBTT	YBUF	YBVP	YBVS	YCAC	LWFC
	Aug-Oct 2017	183	26.5	56	23.5	452	65.4	1,715	62.0	161	8.6	888	32.1
	Aug-Oct 2018	166	24.5	40	19.5	473	69.6	1,666	61.1	169	9.2	894	32.8
	Nov-Jan 2019	164	24.1	43	20.8	472	69.5	1,713	63.0	159	8.5	847	31.1
	Feb-Apr 2019	179	26.4	41	18.6	459	67.6	1,707	63.0	146	7.9	856	31.6
	May-Jul 2019	187	27.5	37	16.7	454	67.0	1,685	62.4	158	8.6	855	31.7
	<b>Aug-Oct 2019</b>	<b>191</b>	<b>28.0</b>	<b>35</b>	<b>15.3</b>	<b>457</b>	<b>66.9</b>	<b>1,643</b>	<b>61.1</b>	<b>160</b>	<b>8.9</b>	<b>886</b>	<b>32.9</b>
	Change on quarter	5	0.5	-3	-1.4	3	-0.1	-42	-1.3	2	0.3	30	1.2
	Change %	2.5		-7.5		0.6		-2.5		1.4		3.5	
	Change on year	25	3.6	-6	-4.2	-16	-2.7	-23	0.0	-9	-0.3	-8	0.2
	Change %	15.1		-14.1		-3.4		-1.4		-5.1		-0.9	

# SUMMARY

## 2(2) Labour market status by age group

United Kingdom (thousands) seasonally adjusted

People		Aged 25-34						Aged 35-49					
		Employment		Unemployment		Inactivity		Employment		Unemployment		Inactivity	
		Level	Rate	Level	Rate	Level	Rate	Level	Rate	Level	Rate	Level	Rate
		YBTU	YBUG	YCGM	YCGP	YCAV	LWFD	YBTX	YBUJ	YCGS	YCGV	YCBB	LWFG
	Aug-Oct 2017	7,389	83.1	304	3.9	1,196	13.5	10,860	84.7	301	2.7	1,654	12.9
	Aug-Oct 2018	7,469	83.6	291	3.7	1,176	13.2	10,878	85.2	305	2.7	1,581	12.4
	Nov-Jan 2019	7,535	84.2	257	3.3	1,153	12.9	10,893	85.4	289	2.6	1,570	12.3
	Feb-Apr 2019	7,564	84.5	250	3.2	1,139	12.7	10,871	85.3	293	2.6	1,574	12.4
	May-Jul 2019	7,557	84.3	265	3.4	1,141	12.7	10,867	85.4	269	2.4	1,590	12.5
	<b>Aug-Oct 2019</b>	<b>7,591</b>	<b>84.7</b>	<b>257</b>	<b>3.3</b>	<b>1,111</b>	<b>12.4</b>	<b>10,892</b>	<b>85.6</b>	<b>260</b>	<b>2.3</b>	<b>1,573</b>	<b>12.4</b>
	Change on quarter	34	0.4	-8	-0.1	-30	-0.3	25	0.2	-10	-0.1	-17	-0.1
	Change %	0.5		-2.9		-2.6		0.2		-3.6		-1.1	
	Change on year	123	1.1	-34	-0.5	-65	-0.8	14	0.4	-46	-0.4	-9	0.0
	Change %	1.6		-11.6		-5.5		0.1		-14.9		-0.5	
<b>Men</b>		YBTV	YBUH	YCGN	YCGQ	YCAZ	LWFE	YBTY	YBUK	YCGT	YCGW	YCBC	LWFH
	Aug-Oct 2017	3,985	89.8	151	3.7	304	6.8	5,732	90.6	151	2.6	442	7.0
	Aug-Oct 2018	4,019	89.7	148	3.6	313	7.0	5,727	90.9	155	2.6	420	6.7
	Nov-Jan 2019	4,046	90.2	137	3.3	304	6.8	5,753	91.4	128	2.2	414	6.6
	Feb-Apr 2019	4,061	90.4	135	3.2	299	6.7	5,739	91.2	134	2.3	417	6.6
	May-Jul 2019	4,047	89.9	145	3.4	311	6.9	5,743	91.4	123	2.1	418	6.7
	<b>Aug-Oct 2019</b>	<b>4,055</b>	<b>90.1</b>	<b>142</b>	<b>3.4</b>	<b>306</b>	<b>6.8</b>	<b>5,758</b>	<b>91.6</b>	<b>120</b>	<b>2.0</b>	<b>406</b>	<b>6.5</b>
	Change on quarter	8	0.2	-3	-0.1	-5	-0.1	15	0.2	-3	-0.1	-12	-0.2
	Change %	0.2		-1.9		-1.5		0.3		-2.4		-2.9	
	Change on year	36	0.3	-6	-0.2	-7	-0.2	31	0.7	-35	-0.6	-14	-0.2
	Change %	0.9		-4.2		-2.2		0.5		-22.5		-3.3	
<b>Women</b>		YBTW	YBUI	YCGO	YCGR	YCBA	LWFF	YBTZ	YBUL	YCGU	YCGX	YCBD	LWFI
	Aug-Oct 2017	3,404	76.5	153	4.3	893	20.1	5,128	79.0	151	2.9	1,211	18.7
	Aug-Oct 2018	3,450	77.4	143	4.0	863	19.4	5,152	79.7	150	2.8	1,161	18.0
	Nov-Jan 2019	3,489	78.3	119	3.3	849	19.0	5,139	79.6	161	3.0	1,156	17.9
	Feb-Apr 2019	3,503	78.6	116	3.2	840	18.8	5,133	79.6	159	3.0	1,157	17.9
	May-Jul 2019	3,510	78.7	120	3.3	830	18.6	5,125	79.5	146	2.8	1,171	18.2
	<b>Aug-Oct 2019</b>	<b>3,536</b>	<b>79.3</b>	<b>115</b>	<b>3.2</b>	<b>805</b>	<b>18.1</b>	<b>5,134</b>	<b>79.7</b>	<b>140</b>	<b>2.6</b>	<b>1,166</b>	<b>18.1</b>
	Change on quarter	26	0.7	-5	-0.2	-25	-0.5	10	0.2	-7	-0.1	-5	-0.1
	Change %	0.7		-4.0		-3.0		0.2		-4.7		-0.4	
	Change on year	86	1.9	-27	-0.8	-58	-1.3	-17	0.0	-11	-0.2	5	0.1
	Change %	2.5		-19.3		-6.7		-0.3		-7.2		0.4	
People		Aged 50-64						Age 65+					
		Employment		Unemployment		Inactivity		Employment		Unemployment		Inactivity	
		Level	Rate	Level	Rate	Level	Rate	Level	Rate	Level	Rate	Level	Rate
		LF26	LF2U	LF28	LF2E	LF2A	LF2W	LFK4	LFK6	K5HU	K5HW	LFL4	LFL6
	Aug-Oct 2017	8,848	71.3	275	3.0	3,292	26.5	1,177	10.1	23	1.9	10,430	89.7
	Aug-Oct 2018	9,065	72.0	267	2.9	3,267	25.9	1,245	10.5	15	1.2	10,562	89.3
	Nov-Jan 2019	9,139	72.3	272	2.9	3,234	25.6	1,289	10.9	21	1.6	10,560	89.0
	Feb-Apr 2019	9,198	72.5	263	2.8	3,228	25.4	1,303	10.9	17	1.3	10,598	88.9
	May-Jul 2019	9,258	72.7	259	2.7	3,218	25.3	1,314	11.0	14	1.0	10,640	88.9
	<b>Aug-Oct 2019</b>	<b>9,250</b>	<b>72.4</b>	<b>267</b>	<b>2.8</b>	<b>3,257</b>	<b>25.5</b>	<b>1,309</b>	<b>10.9</b>	<b>24</b>	<b>1.8</b>	<b>10,681</b>	<b>88.9</b>
	Change on quarter	-8	-0.3	8	0.1	40	0.2	-5	-0.1	11	0.8	41	0.0
	Change %	-0.1		3.2		1.2		-0.4		79.6		0.4	
	Change on year	185	0.5	0	-0.1	-9	-0.4	63	0.4	9	0.6	119	-0.4
	Change %	2.0		-0.2		-0.3		5.1		61.7		1.1	
<b>Men</b>		MGUX	YBUN	MGVM	MGXF	MGWB	LWFK	MGVA	YBUQ	MGVP	MGXI	MGWE	LWFN
	Aug-Oct 2017	4,613	75.7	158	3.3	1,324	21.7	716	13.4	15	2.1	4,622	86.3
	Aug-Oct 2018	4,730	76.5	145	3.0	1,307	21.1	763	14.0	10	1.3	4,682	85.8
	Nov-Jan 2019	4,751	76.6	153	3.1	1,299	20.9	785	14.3	12	1.5	4,683	85.5
	Feb-Apr 2019	4,777	76.7	147	3.0	1,301	20.9	790	14.3	10	1.2	4,707	85.5
	May-Jul 2019	4,799	76.8	142	2.9	1,306	20.9	763	13.8	9	1.2	4,759	86.0
	<b>Aug-Oct 2019</b>	<b>4,800</b>	<b>76.6</b>	<b>159</b>	<b>3.2</b>	<b>1,306</b>	<b>20.8</b>	<b>777</b>	<b>14.0</b>	<b>16</b>	<b>2.0</b>	<b>4,763</b>	<b>85.7</b>
	Change on quarter	1	-0.2	18	0.3	0	-0.1	14	0.2	7	0.8	4	-0.3
	Change %	0.0		12.5		0.0		1.8		71.5		0.1	
	Change on year	70	0.1	14	0.2	-1	-0.3	14	0.0	6	0.7	80	-0.1
	Change %	1.5		9.8		-0.1		1.9		54.2		1.7	
<b>Women</b>		LF27	LF2V	LF29	LF2F	LF2B	LF2X	LFK5	LFK7	K5HV	K5HX	LFL5	LFL7
	Aug-Oct 2017	4,235	67.0	116	2.7	1,968	31.1	461	7.4	8	1.6	5,808	92.5
	Aug-Oct 2018	4,335	67.6	122	2.7	1,960	30.5	483	7.6	5	1.0	5,880	92.3
	Nov-Jan 2019	4,387	68.1	119	2.6	1,934	30.0	504	7.9	9	1.7	5,877	92.0
	Feb-Apr 2019	4,421	68.4	116	2.6	1,927	29.8	514	8.0	8	1.4	5,892	91.9
	May-Jul 2019	4,459	68.7	117	2.6	1,912	29.5	551	8.6	*	*	5,881	91.4
	<b>Aug-Oct 2019</b>	<b>4,450</b>	<b>68.4</b>	<b>107</b>	<b>2.4</b>	<b>1,951</b>	<b>30.0</b>	<b>531</b>	<b>8.2</b>	<b>9</b>	<b>1.6</b>	<b>5,918</b>	<b>91.6</b>
	Change on quarter	-9	-0.4	-10	-0.2	40	0.5	-19	-0.3	*	*	37	0.3
	Change %	-0.2		-8.2		2.1		-3.5		*		0.6	
	Change on year	116	0.8	-15	-0.4	-8	-0.6	49	0.6	4	0.6	38	-0.7
	Change %	2.7		-12.0		-0.4		10.1		77.7		0.7	

Source: Labour Force Survey

Labour market statistics enquiries: labour.market@ons.gov.uk

# EMPLOYMENT AND JOBS

## 3 Full-time, part-time and temporary workers

United Kingdom (thousands of people aged 16 and over) seasonally adjusted

All in employment						Full-time and part-time workers <sup>1</sup>							
People	Total	Employees	Self employed	Unpaid family workers	Government supported training & employment programmes <sup>2</sup>	Total people working full-time	total people working part-time	Employees working full-time	Employees working part-time	Self-employed people working full-time	Self-employed people working part-time	Total Workers with second jobs	
	1	2	3	4	5	6	7	8	9	10	11	12	
	MGRZ	MGRN	MGRQ	MGRT	MGRW	YCBF	YCBH	YCBK	YCBN	YCBQ	YCBT	YCBW	
Aug-Oct 2017	32,094	27,098	4,807	113	76	23,535	8,559	20,110	6,988	3,355	1,451	1,131	
Aug-Oct 2018	32,492	27,550	4,778	110	53	23,966	8,526	20,575	6,976	3,348	1,431	1,127	
Nov-Jan 2019	32,714	27,703	4,839	127	45	24,118	8,596	20,667	7,035	3,409	1,430	1,141	
Feb-Apr 2019	32,746	27,665	4,913	132	37	24,149	8,597	20,632	7,033	3,471	1,442	1,125	
May-Jul 2019	32,777	27,671	4,928	126	53	24,172	8,605	20,661	7,009	3,456	1,472	1,147	
Aug-Oct 2019	32,801	27,660	4,960	126	55	24,238	8,564	20,712	6,948	3,483	1,477	1,139	
Change on quarter	24	-11	33	0	3	66	-41	50	-61	27	5	-9	
Change %	0.1	0.0	0.7	-0.3	5.3	0.3	-0.5	0.2	-0.9	0.8	0.4	-0.8	
Change on year	309	109	182	16	2	272	38	137	-28	135	47	11	
Change %	1.0	0.4	3.8	14.1	4.5	1.1	0.4	0.7	-0.4	4.0	3.3	1.0	
Men	MGSA	MGRO	MGRR	MGRU	MGRX	YCBF	YCBI	YCBL	YCBO	YCBR	YCBU	YCBX	
Aug-Oct 2017	16,967	13,666	3,211	51	40	14,722	2,246	12,064	1,602	2,623	588	496	
Aug-Oct 2018	17,240	13,953	3,200	53	34	14,948	2,292	12,301	1,653	2,622	578	470	
Nov-Jan 2019	17,317	13,995	3,243	54	26	15,037	2,280	12,348	1,647	2,668	575	488	
Feb-Apr 2019	17,290	13,915	3,289	67	19	15,010	2,280	12,301	1,614	2,686	603	472	
May-Jul 2019	17,261	13,893	3,276	57	35	15,024	2,237	12,305	1,587	2,683	593	475	
Aug-Oct 2019	17,315	13,926	3,295	63	30	15,063	2,251	12,336	1,591	2,701	594	486	
Change on quarter	54	34	20	5	-5	40	14	30	3	19	1	11	
Change %	0.3	0.2	0.6	9.0	-13.0	0.3	0.6	0.2	0.2	0.7	0.1	2.4	
Change on year	74	-27	96	10	-4	116	-41	35	-62	80	16	16	
Change %	0.4	-0.2	3.0	18.9	-12.4	0.8	-1.8	0.3	-3.8	3.0	2.8	3.4	
Women	MGSB	MGRP	MGRS	MGRV	MGRY	YCBG	YCBJ	YCBM	YCBP	YCBS	YCBV	YCBY	
Aug-Oct 2017	15,127	13,432	1,596	62	37	8,814	6,313	8,046	5,386	733	864	636	
Aug-Oct 2018	15,252	13,597	1,579	58	19	9,018	6,234	8,274	5,323	726	853	657	
Nov-Jan 2019	15,396	13,708	1,596	73	19	9,080	6,316	8,320	5,388	741	855	653	
Feb-Apr 2019	15,456	13,750	1,624	65	18	9,139	6,317	8,331	5,419	785	839	653	
May-Jul 2019	15,517	13,778	1,652	69	18	9,148	6,368	8,356	5,422	773	879	673	
Aug-Oct 2019	15,487	13,734	1,665	63	25	9,174	6,313	8,376	5,358	782	883	652	
Change on quarter	-30	-44	13	-6	7	26	-56	20	-64	8	5	-20	
Change %	-0.2	-0.3	0.8	-8.1	40.8	0.3	-0.9	0.2	-1.2	1.1	0.5	-3.0	
Change on year	235	137	86	6	7	156	79	102	35	55	31	-5	
Change %	1.5	1.0	5.5	9.6	35.8	1.7	1.3	1.2	0.7	7.6	3.6	-0.7	
Temporary employees (reasons for temporary working)						Part-time workers (reasons for working part-time) <sup>3</sup>							
People	Total	Total as % of all employees	Could not find permanent job	% that could not find permanent job	Did not want permanent job	Had a contract with period of training	Some other reason	Total <sup>4</sup>	Could not find full-time job	% that could not find full-time job	Did not want full-time job	Ill or disabled	Student or at school
	13	14	15	16	17	18	19	20	21	22	23	24	25
	YCBZ	YCCC	YCCF	YCCI	YCCJ	YCCO	YCCR	YCCU	YCCX	YCDA	YCDD	YCDG	YCDJ
Aug-Oct 2017	1,599	5.9	451	28.2	433	140	576	8,440	1,005	11.9	6,001	265	1,094
Aug-Oct 2018	1,527	5.5	411	26.9	443	117	556	8,407	899	10.7	6,009	287	1,141
Nov-Jan 2019	1,553	5.6	398	25.6	464	128	563	8,465	932	11.0	6,127	260	1,080
Feb-Apr 2019	1,486	5.4	375	25.2	446	131	534	8,475	933	11.0	6,121	284	1,072
May-Jul 2019	1,424	5.1	357	25.0	410	124	533	8,481	890	10.5	6,133	278	1,116
Aug-Oct 2019	1,423	5.1	364	25.6	370	131	557	8,425	875	10.4	6,122	275	1,095
Change on quarter	-2	0.0	8	0.6	-41	7	24	-56	-16	-0.1	-11	-3	-21
Change %	-0.1		2.2		-9.9	5.9	4.5	-0.7	-1.7		-0.2	-1.2	-1.9
Change on year	-104	-0.4	-47	-1.3	-73	14	1	19	-25	-0.3	113	-12	-47
Change %	-6.8		-11.3		-16.4	12.0	0.2	0.2	-2.7		1.9	-4.3	-4.1
Men	YCCA	YCCD	YCCG	YCCJ	YCCM	YCCP	YCCS	YCCV	YCCY	YCDB	YCDE	YCDH	YCDK
Aug-Oct 2017	751	5.5	229	30.5	197	68	257	2,190	437	19.9	1,165	94	467
Aug-Oct 2018	728	5.2	215	29.6	198	61	254	2,231	413	18.5	1,194	97	501
Nov-Jan 2019	712	5.1	202	28.4	197	65	248	2,222	416	18.7	1,246	94	447
Feb-Apr 2019	679	4.9	198	29.2	190	62	228	2,217	406	18.3	1,260	93	432
May-Jul 2019	647	4.7	183	28.2	164	60	241	2,180	370	17.0	1,255	92	439
Aug-Oct 2019	673	4.8	186	27.7	158	69	259	2,184	374	17.1	1,262	89	437
Change on quarter	25	0.2	4	-0.5	-6	9	19	4	3	0.1	7	-4	-3
Change %	3.9		2.0		-3.7	15.2	7.8	0.2	0.9		0.6	-3.9	-0.6
Change on year	-56	-0.4	-29	-1.9	-40	8	6	-46	-40	-1.4	68	-8	-65
Change %	-7.7		-13.5		-20.4	12.7	2.3	-2.1	-9.6		5.7	-8.2	-12.9
Women	YCCB	YCCE	YCCH	YCCJ	YCCN	YCCQ	YCCT	YCCW	YCCZ	YCDC	YCDF	YCDI	YCDL
Aug-Oct 2017	849	6.3	222	26.2	236	72	318	6,250	568	9.1	4,836	171	628
Aug-Oct 2018	798	5.9	196	24.5	245	56	302	6,176	486	7.9	4,815	191	640
Nov-Jan 2019	841	6.1	196	23.3	268	63	315	6,243	516	8.3	4,881	166	633
Feb-Apr 2019	806	5.9	176	21.9	256	68	306	6,257	527	8.4	4,861	191	640
May-Jul 2019	777	5.6	174	22.4	247	64	292	6,301	520	8.3	4,878	186	677
Aug-Oct 2019	750	5.5	178	23.7	212	62	298	6,241	501	8.0	4,860	186	658
Change on quarter	-27	-0.2	4	1.4	-34	-2	5	-60	-19	-0.2	-18	0	-18
Change %	-3.5		2.4		-13.9	-2.9	1.8	-0.9	-3.6		-0.4	0.2	-2.7
Change on year	-48	-0.4	-17	-0.8	-33	6	-4	65	15	0.2	45	-4	18
Change %	-6.0		-8.9		-13.3	11.1	-1.5	1.1	3.1		0.9	-2.4	2.8

Relationship between columns: 1= 2+3+4+5; 1=6+7; 2=8+9; 3=10+11; 13=15+17+18+19; 20=9+11; 14=13/2; 16=15/13; 22=21/20

1. The split between full-time and part-time employment is based on respondents' self-classification.

2. This series does not include all people on these programmes; it only includes those engaging in any form of work, work experience or work-related training.

3. These series cover Employees and Self-employed only. These series include some temporary employees recorded in columns 13 to 19.

4. The total includes those who did not give a reason for working part-time and it therefore does not equal the sum of columns 21, 23, 24 and 25.

Source: Labour Force Survey

Labour market statistics enquiries: labour.market@ons.gov.uk

# EMPLOYMENT AND JOBS

## 7 Actual weekly hours worked

United Kingdom (hours worked by people aged 16 and over), seasonally adjusted

	Total weekly hours (millions) <sup>1,2</sup>	Average (mean) actual weekly hours worked			
		All workers <sup>1</sup>	Full-time workers <sup>3</sup>	Part-time workers <sup>3</sup>	Second Jobs
		YBUS	YBUY	YBVB	YBVE
<b>People</b>					
Aug-Oct 2017	1,024.9	31.9	37.2	16.1	10.0
Aug-Oct 2018	1,044.8	32.2	37.3	16.3	9.7
Nov-Jan 2019	1,047.5	32.0	37.2	16.2	9.7
Feb-Apr 2019	1,054.1	32.2	37.4	16.3	9.7
May-Jul 2019	1,049.8	32.0	37.2	16.3	9.7
<b>Aug-Oct 2019</b>	<b>1,055.7</b>	<b>32.2</b>	<b>37.3</b>	<b>16.4</b>	<b>9.8</b>
Change on quarter	6.0	0.2	0.2	0.0	0.1
Change %	0.6	0.5	0.4	0.2	1.2
Change on year	10.9	0.0	0.1	0.0	0.1
Change %	1.0	0.1	0.1	0.1	1.0
<b>Men</b>					
Aug-Oct 2017	615.4	36.3	38.9	16.0	10.9
Aug-Oct 2018	628.4	36.5	39.1	16.3	10.6
Nov-Jan 2019	629.5	36.4	39.1	16.3	10.4
Feb-Apr 2019	629.5	36.4	39.1	16.3	10.7
May-Jul 2019	625.8	36.3	38.9	16.4	10.3
<b>Aug-Oct 2019</b>	<b>628.3</b>	<b>36.3</b>	<b>39.0</b>	<b>16.2</b>	<b>10.6</b>
Change on quarter	2.4	0.0	0.1	-0.2	0.2
Change %	0.4	0.1	0.1	-1.3	2.1
Change on year	-0.1	-0.2	-0.2	-0.1	0.0
Change %	0.0	-0.4	-0.4	-0.9	0.0
<b>Women</b>					
Aug-Oct 2017	409.5	27.1	34.2	16.2	9.3
Aug-Oct 2018	416.4	27.3	34.2	16.4	9.1
Nov-Jan 2019	418.0	27.2	34.1	16.2	9.1
Feb-Apr 2019	424.6	27.5	34.6	16.3	9.0
May-Jul 2019	423.9	27.3	34.3	16.3	9.2
<b>Aug-Oct 2019</b>	<b>427.4</b>	<b>27.6</b>	<b>34.7</b>	<b>16.4</b>	<b>9.2</b>
Change on quarter	3.5	0.3	0.3	0.1	0.0
Change %	0.8	1.0	1.0	0.7	0.1
Change on year	11.0	0.3	0.4	0.1	0.1
Change %	2.7	1.1	1.2	0.4	1.5

Source: Labour Force Survey

Labour market statistics enquiries: labour.market@ons.gsi.gov.uk

1 Main and second job

2 Total actual weekly hours worked including paid and unpaid overtime.

3 Main job only. The split between full-time and part-time employment is based on respondents' self-classification.

## 7 (1) Usual weekly hours of work<sup>1</sup>

United Kingdom, seasonally adjusted

	All in Employment (%)			Employees (%)			Self-Employed (%)		
	People	Men	Women	People	Men	Women	People	Men	Women
<b>Aug-Oct 2018</b>									
Less than 6 Hours	1.4	0.9	1.9	0.9	0.6	1.3	3.4	1.9	6.4
6 up to 15 hours	6.3	3.5	9.6	5.8	3.1	8.6	9.0	4.6	17.9
16 up to 30 hours	19.8	10.2	30.6	19.3	8.9	30.0	22.9	15.9	37.0
31 up to 45 hours	54.2	59.9	47.8	57.0	63.2	50.6	39.0	46.3	24.3
Over 45 hours	18.2	25.5	10.0	17.0	24.3	9.5	25.7	31.3	14.5
Total (thousands)	32,492	17,240	15,252	27,550	13,953	13,597	4,778	3,200	1,579
<b>May-Jul 2019</b>									
Less than 6 Hours	1.5	1.0	2.1	1.0	0.6	1.3	3.6	1.9	6.9
6 up to 15 hours	6.3	3.4	9.6	5.7	2.9	8.6	9.3	5.3	17.4
16 up to 30 hours	19.8	10.2	30.6	19.4	8.9	30.0	22.3	15.4	35.9
31 up to 45 hours	54.0	60.0	47.2	56.8	63.6	49.9	38.3	44.9	25.2
Over 45 hours	18.4	25.5	10.5	17.0	24.0	10.1	26.5	32.5	14.6
Total (thousands)	32,777	17,261	15,517	27,671	13,893	13,778	4,928	3,276	1,652
<b>Aug-Oct 2019</b>									
Less than 6 Hours	1.5	0.9	2.0	1.0	0.7	1.3	3.4	1.7	6.9
6 up to 15 hours	6.4	3.5	9.5	5.8	3.1	8.5	8.7	4.8	16.5
16 up to 30 hours	19.6	10.0	30.3	19.0	8.4	29.7	23.2	16.3	36.7
31 up to 45 hours	54.2	60.1	47.5	57.0	63.6	50.3	38.8	45.8	25.0
Over 45 hours	18.5	25.4	10.7	17.2	24.2	10.2	25.8	31.4	14.9
Total (thousands)	32,801	17,315	15,487	27,660	13,926	13,734	4,960	3,295	1,665

1 Total usual weekly hours worked by people aged 16 and over in main job including paid and unpaid overtime.

Source: Labour Force Survey

Labour market statistics enquiries: labour.market@ons.gov.uk

8(1) Employment levels and rates by country of birth and nationality  
(first published on 12 November 2019)

Table 1: Migration and naturalisation statistics, 2017-2019																					
		Europe									Africa		Asia			America and Oceania					
		European Union (EU)																			
Country of birth	Total <sup>1</sup>	UK	Non UK	Total Europe	Total EU (EU27) <sup>2</sup>	EU14 <sup>3</sup>	EU8 <sup>4</sup>	EU2 <sup>5</sup>	Other EU <sup>6</sup>	Other Europe (not in EU)	Total Africa	Of which: South Africa	Total Asia	Of which: India	Of which: Pakistan and Bangla-desh	Total America and Oceania	Of which: USA	Of which: Australia and New Zealand	Total Non-EU <sup>7</sup>		
Levels (aged 16 and over)																					
Jul - Sep 2017	32,138	26,463	5,673	2,625	2,394	969	1,041	357	28	231	919	186	1,561	477	374	568	88	150	3,279		
Jul - Sep 2018	32,503	26,963	5,532	2,517	2,288	978	901	370	39	229	878	159	1,479	473	337	658	96	152	3,244		
Oct - Dec 2018	32,671	27,011	5,651	2,550	2,303	989	886	384	43	248	893	174	1,568	476	344	640	107	130	3,349		
Jan - Mar 2019	32,641	26,838	5,796	2,666	2,420	994	947	438	41	246	933	200	1,536	452	366	662	108	139	3,376		
Apr - Jun 2019	32,752	26,967	5,777	2,692	2,438	1,019	971	407	41	254	923	198	1,504	475	387	658	105	167	3,339		
Jul - Sep 2019	32,802	27,028	5,770	2,630	2,368	1,020	953	356	40	261	962	176	1,532	483	373	646	93	166	3,401		
Change on year	300	65	238	113	81	42	52	-15	1	32	85	17	52	10	35	-11	-3	13	157		
Change %	0.9	0.2	4.3	4.5	3.5	4.3	5.8	-3.9	3.3	13.9	9.6	10.8	3.5	2.1	10.5	-1.7	-2.6	8.8	4.8		
Nationality	MGTM	JF6H	JF6I	FSC8	EQ4U	JJR4	JJR6	EQ4V	FSC9	FSCE	FSD2	JJS4	FSD3	JJS8	JJT2	FSD4	JJR8	JJS6	EQ4W		
Jul - Sep 2017	32,138	28,569	3,564	2,459	2,363	979	1,032	344	8	96	285	63	544	178	102	276	70	87	1,201		
Jul - Sep 2018	32,503	29,028	3,467	2,341	2,231	980	880	360	11	109	249	50	545	187	91	332	100	86	1,236		
Oct - Dec 2018	32,671	29,098	3,569	2,400	2,274	1,011	869	370	24	126	277	64	593	194	107	299	96	71	1,295		
Jan - Mar 2019	32,641	28,943	3,698	2,513	2,381	1,018	925	423	16	132	273	71	597	182	115	315	101	75	1,317		
Apr - Jun 2019	32,752	29,084	3,661	2,490	2,368	1,019	952	375	22	122	289	63	567	187	121	314	78	95	1,292		
Jul - Sep 2019	32,802	29,209	3,589	2,367	2,238	981	903	333	21	129	297	56	599	210	126	326	68	107	1,351		
Change on year	300	182	122	26	6	1	23	-27	10	20	48	6	54	24	35	-6	-32	21	116		
Change %	0.9	0.6	3.5	1.1	0.3	0.1	2.6	-7.6	88.9	18.1	19.1	12.0	9.9	12.6	38.5	-1.8	-32.1	24.9	9.3		
Rates (aged 16 to 64)																					
Country of birth	LF9D	LFM6	LFM7	FSD5	EQ4Y	LFM8	LFM9	EQ4Z	FSD6	FSD7	FSD8	LFN4	FSD9	LFN6	LFN7	FSE2	LFN2	LFN5	EQ52		
Jul - Sep 2017	75.2	75.5	73.8	80.8	81.8	78.2	84.0	86.1	74.9	71.5	71.5	83.0	64.8	73.9	55.5	76.9	75.1	85.1	68.9		
Jul - Sep 2018	75.7	76.1	74.2	81.5	82.3	79.7	85.6	82.4	72.2	74.6	72.9	83.5	64.4	77.0	55.5	75.7	74.2	81.5	69.3		
Oct - Dec 2018	76.0	76.3	74.7	81.6	82.6	79.8	86.1	83.5	71.8	73.0	73.3	84.7	65.5	75.5	55.9	77.6	79				

Labour market statistics enquiries: [labour.market@ons.gov.uk](mailto:labour.market@ons.gov.uk)

- The estimates shown in this table relate to the number of people in employment and should not be used as a proxy for flows of foreign migrants into the UK.

# NON-UK WORKERS

## 8(2) Unemployment and economic inactivity levels and rates by country of birth and nationality

(first published on 12 November 2019)

United Kingdom (thousands of people) not seasonally adjusted

Unemployment (all aged 16 and over)																Economically inactive (all aged from 16 to 64)									
	Total <sup>1</sup>	UK	Non-UK	EU27 <sup>2</sup>	Non-EU	Total <sup>1</sup>		UK		Non-UK		EU27 <sup>2</sup>		Non-EU											
						All economically inactive	Of which: Students <sup>3</sup>	All economically inactive	Of which: Students <sup>3</sup>	All economically inactive	Of which: Students <sup>3</sup>	All economically inactive	Of which: Students <sup>3</sup>	All economically inactive	Of which: Students <sup>3</sup>										
Levels (thousands of people)																									
By country of birth	MGTP	DSWD	DT35	DT3F	DTKB	LF9L	LF9W	DTLK	DYUP	DYUR	DYVR	DYVZ	DYWL	DYWR	DZ37										
Jul - Sep 2017	1,500	1,221	279	72	207	8,742	2,151	7,038	1,688	1,687	463	454	152	1,233	311										
Jul - Sep 2018	1,446	1,156	291	85	206	8,589	2,145	6,973	1,711	1,600	431	400	136	1,200	296										
Oct - Dec 2018	1,328	1,068	260	78	182	8,598	2,228	6,957	1,757	1,623	470	399	161	1,224	309										
Jan - Mar 2019	1,292	1,013	279	84	195	8,663	2,373	6,992	1,851	1,654	521	409	159	1,245	362										
Apr - Jun 2019	1,296	1,015	280	74	206	8,659	2,350	7,006	1,864	1,640	485	414	159	1,226	327										
Jul - Sep 2019	1,374	1,115	259	72	187	8,503	2,089	6,933	1,687	1,556	401	395	125	1,161	276										
Change on year	-73	-41	-32	-12	-19	-85	-56	-40	-24	-44	-30	-5	-10	-39	-19										
Change %	-5.0	-3.5	-10.9	-14.7	-9.4	-1.0	-2.6	-0.6	-1.4	-2.7	-6.9	-1.2	-7.7	-3.2	-6.5										
By nationality	MGTP	DSWE	DT39	DTG9	DTKC	LF9L	LF9W	DYTC	DYUQ	DYUS	DYVU	DYWA	DYWM	DYWS	DZGD										
Jul - Sep 2017	1,500	1,325	174	79	94	8,742	2,151	7,688	1,815	1,037	335	451	155	586	180										
Jul - Sep 2018	1,446	1,276	170	80	90	8,589	2,145	7,602	1,846	973	297	378	132	596	165										
Oct - Dec 2018	1,328	1,154	173	76	97	8,598	2,228	7,630	1,892	954	335	377	165	577	170										
Jan - Mar 2019	1,292	1,107	185	86	99	8,663	2,373	7,631	1,982	1,018	390	409	166	609	223										
Apr - Jun 2019	1,296	1,110	186	71	114	8,659	2,350	7,621	1,981	1,023	366	399	162	624	204										
Jul - Sep 2019	1,374	1,206	168	76	92	8,503	2,089	7,546	1,801	940	287	382	125	558	162										
Change on year	-73	-70	-2	-5	3	-85	-56	-56	-45	-34	-10	4	-7	-38	-3										
Change %	-5.0	-5.5	-1.2	-6.0	3.1	-1.0	-2.6	-0.7	-2.5	-3.5	-3.3	1.2	-5.4	-6.4	-1.6										
Rates (%)																									
By country of birth	MGUK	DT2W	DT3B	DTJG	DTKD	CRZK		DYTD		DYUT		DYWD		DYWT											
Jul - Sep 2017	4.5	4.4	4.7	2.9	5.9	21.2		20.9		22.5		15.7		26.7											
Jul - Sep 2018	4.3	4.1	5.0	3.6	6.0	20.8		20.6		21.9		14.6		26.2											
Oct - Dec 2018	3.9	3.8	4.4	3.3	5.1	20.8		20.6		21.9		14.6		26.1											
Jan - Mar 2019	3.8	3.6	4.6	3.4	5.5	21.0		20.8		21.8		14.3		26.3											
Apr - Jun 2019	3.8	3.6	4.6	2.9	5.8	21.0		20.8		21.7		14.4		26.3											
Jul - Sep 2019	4.0	4.0	4.3	3.0	5.2	20.6		20.5		20.9		14.1		25.0											
Change on year	-0.2	-0.1	-0.7	-0.6	-0.8	-0.2		-0.1		-1.0		-0.5		-1.2											
By nationality	MGUK	DT2Z	DT3D	DTKA	DTLH	CRZK		DYUO		DYUU		DYWE		DZ36											
Jul - Sep 2017	4.5	4.4	4.6	3.2	7.3	21.2		21.1		21.9		15.7		31.5											
Jul - Sep 2018	4.3	4.2	4.7	3.5	6.8	20.8		20.7		21.3		14.2		31.3											
Oct - Dec 2018	3.9	3.8	4.6	3.2	7.0	20.8		20.8		20.5		14.0		29.5											
Jan - Mar 2019	3.8	3.7	4.8	3.5	7.0	21.0		20.9		21.0		14.4		30.3											
Apr - Jun 2019	3.8	3.7	4.8	2.9	8.1	21.0		20.9		21.2		14.2		31.0											
Jul - Sep 2019	4.0	4.0	4.5	3.3	6.4	20.6		20.6		20.2		14.4		28.1											
Change on year	-0.2	-0.2	-0.2	-0.2	-0.4	-0.2		-0.2		-1.1		0.2		-3.2											

Source: Labour Force Survey  
Labour market statistics enquiries: labour.market@ons.gov.uk

1. The total series includes people who do not state their country of birth or nationality. The total levels series therefore do not equal the sum of the "UK" and "Non-UK" series.
2. This series consists of all 27 EU member states excluding the UK.
3. This series consists of those people whose main reason for being economically inactive was because they were students. It does not include all students as some students will be included in the employment and unemployment estimates.

# UNEMPLOYMENT

## 9(1) Unemployment by age and duration

United Kingdom (thousands) seasonally adjusted

		All aged 16 & over							All aged 16 - 64						
People		All	Rate (%) <sup>1</sup>	Up to 6 months	Over 6 and up to 12 months	All over 12 months	% over 12 months	All over 24 months	All	Rate (%) <sup>1</sup>	Up to 6 months	Over 6 and up to 12 months	All over 12 months	% over 12 months	All over 24 months
		1	2	3	4	5	6	7	8	9	10	11	12	13	14
		MGSC	MGSX	YBWF	YBWG	YBWH	YBWI	YBWL	LF2I	LF2Q	LF2Y	LF32	LF34	LF36	LF38
	Aug-Oct 2017	1,422	4.2	831	215	376	26.4	205	1,400	4.3	820	211	368	26.3	201
	Aug-Oct 2018	1,373	4.1	802	219	352	25.7	185	1,358	4.2	792	217	349	25.7	184
	Nov-Jan 2019	1,338	3.9	786	205	347	25.9	169	1,317	4.0	772	202	344	26.1	166
	Feb-Apr 2019	1,304	3.8	779	178	347	26.6	168	1,287	3.9	773	177	337	26.2	163
	May-Jul 2019	1,294	3.8	786	180	327	25.3	171	1,280	3.9	782	179	320	25.0	167
	<b>Aug-Oct 2019</b>	<b>1,281</b>	<b>3.8</b>	<b>782</b>	<b>191</b>	<b>308</b>	<b>24.0</b>	<b>158</b>	<b>1,256</b>	<b>3.8</b>	<b>771</b>	<b>187</b>	<b>299</b>	<b>23.8</b>	<b>151</b>
	Change on quarter	-13	0.0	-5	11	-19	-1.2	-13	-24	-0.1	-11	8	-21	-1.2	-16
	Change %	-1.0		-0.6	6.1	-5.9		-7.5	-1.9		-1.4	4.6	-6.6		-9.8
	Change on year	-93	-0.3	-20	-28	-45	-1.6	-27	-102	-0.3	-22	-30	-51	-1.9	-33
	Change %	-6.8		-2.5	-12.7	-12.7		-14.6	-7.5		-2.8	-13.8	-14.5		-18.0
<b>Men</b>		MGSD	MGSY	MGYK	MGYM	MGYO	YBWJ	YBWM	YBSI	YBTJ	YBWP	YBWS	YBWW	YBWW	YBWB
	Aug-Oct 2017	777	4.4	424	128	225	29.0	122	762	4.5	416	124	222	29.1	120
	Aug-Oct 2018	744	4.1	407	119	217	29.2	117	734	4.3	401	119	214	29.2	116
	Nov-Jan 2019	728	4.0	396	120	212	29.1	111	716	4.1	389	118	209	29.2	108
	Feb-Apr 2019	719	4.0	401	103	214	29.8	107	709	4.1	399	102	208	29.3	106
	May-Jul 2019	710	4.0	402	106	202	28.5	110	701	4.1	399	105	197	28.1	107
	<b>Aug-Oct 2019</b>	<b>715</b>	<b>4.0</b>	<b>413</b>	<b>108</b>	<b>193</b>	<b>27.0</b>	<b>102</b>	<b>699</b>	<b>4.1</b>	<b>407</b>	<b>104</b>	<b>188</b>	<b>26.9</b>	<b>98</b>
	Change on quarter	4	0.0	12	2	-9	-1.5	-8	-2	0.0	7	-1	-9	-1.2	-9
	Change %	0.6		3.0	1.8	-4.7		-7.2	-0.3		1.9	-0.8	-4.5		-8.2
	Change on year	-29	-0.2	6	-11	-24	-2.2	-15	-35	-0.2	6	-15	-26	-2.3	-18
	Change %	-3.9		1.5	-9.4	-11.1		-12.9	-4.8		1.4	-12.3	-12.2		-15.3
<b>Women</b>		MGSE	MGSZ	MGYL	MGYN	MGYP	YBWK	YBWN	LF2J	LF2R	LF2Z	LF33	LF35	LF37	LF39
	Aug-Oct 2017	645	4.1	407	88	150	23.3	83	637	4.2	404	87	146	23.0	81
	Aug-Oct 2018	629	4.0	394	100	135	21.5	68	625	4.1	391	98	135	21.6	68
	Nov-Jan 2019	611	3.8	390	85	135	22.1	58	602	3.9	383	84	135	22.4	58
	Feb-Apr 2019	586	3.7	377	75	133	22.7	61	578	3.7	374	75	129	22.3	57
	May-Jul 2019	583	3.6	385	74	125	21.4	61	579	3.7	382	74	123	21.3	60
	<b>Aug-Oct 2019</b>	<b>566</b>	<b>3.5</b>	<b>368</b>	<b>83</b>	<b>115</b>	<b>20.3</b>	<b>56</b>	<b>557</b>	<b>3.6</b>	<b>364</b>	<b>83</b>	<b>111</b>	<b>19.9</b>	<b>53</b>
	Change on quarter	-18	-0.1	-17	9	-10	-1.1	-5	-22	-0.1	-18	9	-12	-1.4	-8
	Change %	-3.0		-4.4	12.3	-7.8		-8.1	-3.8		-4.8	12.4	-10.1		-12.8
	Change on year	-64	-0.4	-26	-17	-20	-1.2	-12	-67	-0.5	-28	-15	-24	-1.8	-15
	Change %	-10.1		-6.7	-16.7	-15.1		-17.7	-10.8		-7.0	-15.5	-18.1		-22.6
		16-17							18-24						
People		All	Rate (%) <sup>1</sup>	Up to 6 months	Over 6 and up to 12 months	All over 12 months	% over 12 months	All over 24 months	All	Rate (%) <sup>1</sup>	Up to 6 months	Over 6 and up to 12 months	All over 12 months	% over 12 months	All over 24 months
		15	16	17	18	19	20	21	22	23	24	25	26	27	28
		YBVH	YBVK	YBXD	YBXG	YBXJ	YBXM	YBXP	YBVN	YBVQ	YBXS	YBXV	YBXY	YBYB	YBYE
	Aug-Oct 2017	110	24.1	86	18	5	4.7	*	410	10.6	264	67	79	19.2	27
	Aug-Oct 2018	95	22.8	71	20	*	*	*	400	10.2	268	63	69	17.3	25
	Nov-Jan 2019	91	22.2	73	12	6	6.3	*	409	10.4	272	65	73	17.8	20
	Feb-Apr 2019	86	20.3	68	10	8	9.5	*	394	10.2	269	60	65	16.5	14
	May-Jul 2019	84	19.3	63	16	5	5.8	*	404	10.5	275	56	72	17.8	21
	<b>Aug-Oct 2019</b>	<b>87</b>	<b>20.0</b>	<b>70</b>	<b>13</b>	*	*	*	<b>386</b>	<b>10.2</b>	<b>266</b>	<b>58</b>	<b>61</b>	<b>15.9</b>	<b>16</b>
	Change on quarter	3	0.7	7	-3	*	*	*	-18	-0.4	-10	2	-11	-1.9	-4
	Change %	3.9		11.4	-19.2	*	*	*	-4.5		-3.5	3.5	-14.6		-19.9
	Change on year	-8	-2.8	-1	-7	*	*	*	-14	-0.1	-2	-4	-8	-1.4	-9
	Change %	-8.4		-1.0	-36.2	*	*	*	-3.6		-0.9	-6.7	-11.2		-34.6
<b>Men</b>		YBVI	YBVL	YBXE	YBXH	YBXK	YBXN	YBXQ	YBVO	YBVR	YBXT	YBXW	YBXZ	YBYC	YBYF
	Aug-Oct 2017	54	24.9	44	8	*	*	*	249	12.4	142	48	60	23.9	20
	Aug-Oct 2018	55	26.1	40	11	*	*	*	231	11.1	146	35	50	21.8	19
	Nov-Jan 2019	48	23.6	37	6	5	9.6	*	250	12.0	158	40	52	20.7	16
	Feb-Apr 2019	45	22.1	36	*	5	10.8	*	248	12.3	163	41	44	17.7	11
	May-Jul 2019	46	22.0	34	8	*	*	*	246	12.3	155	41	50	20.4	15
	<b>Aug-Oct 2019</b>	<b>52</b>	<b>25.1</b>	<b>43</b>	<b>7</b>	*	*	*	<b>225</b>	<b>11.3</b>	<b>144</b>	<b>37</b>	<b>44</b>	<b>19.6</b>	<b>11</b>
	Change on quarter	6	3.0	9	-1	*	*	*	-20	-1.0	-10	-4	-6	-0.9	-4
	Change %	13.2		26.3	-14.5	*	*	*	-8.3		-6.7	-9.6	-12.2		-25.8
	Change on year	-2	-1.1	2	-4	*	*	*	-6	0.2	-1	2	-6	-2.2	-8
	Change %	-4.3		6.2	-35.6	*	*	*	-2.5		-0.8	4.7	-12.4		-42.8
<b>Women</b>		YBVJ	YBVM	YBXF	YBXI	YBXL	YBXO	YBXR	YBVP	YBVS	YBXU	YBXX	YBYA	YBYD	YBYG
	Aug-Oct 2017	56	23.5	43	10	*	*	*	161	8.6	122	20	19	11.9	7
	Aug-Oct 2018	40	19.5	31	9	*	*	*	169	9.2	123	27	19	11.2	6
	Nov-Jan 2019	43	20.8	36	6	*	*	*	159	8.5	114	24	21	13.2	*
	Feb-Apr 2019	41	18.6	32	5	*	*	*	146	7.9	106	19	21	14.5	*
	May-Jul 2019	37	16.7	29	7	*	*	*	158	8.6	121	16	22	13.8	6
	<b>Aug-Oct 2019</b>	<b>35</b>	<b>15.3</b>	<b>28</b>	<b>6</b>	*	*	*	<b>160</b>	<b>8.9</b>	<b>121</b>	<b>22</b>	<b>17</b>	<b>10.8</b>	<b>5</b>
	Change on quarter	-3	-1.4	-2	-2	*	*	*	2	0.3	1	6	-4	-3.0	0
	Change %	-7.5		-5.7	-24.6	*	*	*	1.4		0.7	37.5	-20.3		-3.8
	Change on year	-6	-4.2	-3	-3	*	*	*	-9	-0.3	-1	-6	-1	-0.3	0
	Change %	-14.1		-10.3	-37.0	*	*	*	-5.1		-1.0	-21.3	-7.9		-7.1

Relationship between columns: 1=3+4+5; 8=10+11+12; 15=17+18+19; 22=24+25+26.

<sup>1</sup>Denominator = economically active for that age group.

Source: Labour Force Survey

Labour market statistics enquiries: labour.market@ons.gov.uk



# UNEMPLOYMENT

## 9(2) Unemployment by age and duration

United Kingdom (thousands) seasonally adjusted

	25-49							50 and over						
	All	Rate(%) <sup>1</sup>	Up to 6 months	Over 6 and up to 12 months	All over 12 months	% over 12 months	All over 24 months	All	Rate(%) <sup>1</sup>	Up to 6 months	Over 6 and up to 12 months	All over 12 months	% over 12 months	All over 24 months
	1	2	3	4	5	6	7	8	9	10	11	12	13	14
	MGVI	MGXB	YBYH	YBYK	YBYN	YBYQ	YBYT	YBVT	YBVW	YBYW	YBYZ	YBZC	YBZF	YBZI
<b>People</b>														
Aug-Oct 2017	605	3.2	349	82	173	28.7	104	297	2.9	131	47	119	39.9	74
Aug-Oct 2018	596	3.1	335	91	170	28.5	92	282	2.7	127	45	110	38.8	67
Nov-Jan 2019	546	2.9	306	85	154	28.3	84	293	2.7	136	43	114	38.8	66
Feb-Apr 2019	544	2.9	314	71	159	29.3	87	280	2.6	128	38	115	41.0	67
May-Jul 2019	534	2.8	313	69	152	28.5	86	272	2.5	135	40	98	36.0	62
<b>Aug-Oct 2019</b>	<b>517</b>	<b>2.7</b>	<b>300</b>	<b>76</b>	<b>140</b>	<b>27.2</b>	<b>74</b>	<b>291</b>	<b>2.7</b>	<b>145</b>	<b>44</b>	<b>102</b>	<b>35.0</b>	<b>67</b>
Change on quarter	-17	-0.1	-13	7	-12	-1.3	-12	19	0.2	10	5	4	-1.0	5
Change %	-3.3		-4.1	10.5	-7.6		-14.2	7.0		7.7	12.1	3.9		7.3
Change on year	-79	-0.4	-35	-15	-29	-1.3	-18	9	0.0	17	-1	-8	-3.8	0
Change %	-13.3		-10.4	-16.9	-17.2		-19.7	3.1		13.7	-2.3	-7.0		0.2
<b>Men</b>	MGVJ	MGXC	YBYI	YBYL	YBYO	YBYR	YBYU	YBVU	YBVX	YBYX	YBZA	YBZD	YBZG	YBZJ
Aug-Oct 2017	302	3.0	166	41	95	31.5	60	173	3.1	73	31	69	39.9	42
Aug-Oct 2018	303	3.0	156	50	97	32.0	58	155	2.8	66	23	66	42.7	38
Nov-Jan 2019	265	2.6	130	48	86	32.5	57	165	2.9	71	25	69	41.7	38
Feb-Apr 2019	268	2.7	142	36	91	33.8	56	157	2.7	61	22	74	47.4	40
May-Jul 2019	267	2.7	145	33	89	33.4	53	151	2.6	68	24	59	39.0	41
<b>Aug-Oct 2019</b>	<b>262</b>	<b>2.6</b>	<b>144</b>	<b>36</b>	<b>82</b>	<b>31.3</b>	<b>47</b>	<b>175</b>	<b>3.0</b>	<b>83</b>	<b>28</b>	<b>64</b>	<b>36.7</b>	<b>44</b>
Change on quarter	-6	-0.1	-1	3	-7	-2.0	-6	24	0.4	15	4	5	-2.3	3
Change %	-2.1		-0.9	8.4	-8.1		-11.4	16.2		21.5	17.6	9.3		6.3
Change on year	-41	-0.4	-12	-14	-15	-0.7	-12	20	0.3	17	5	-2	-6.0	6
Change %	-13.5		-7.9	-27.7	-15.4		-19.8	12.7		25.8	21.2	-3.2		14.4
<b>Women</b>	MGVK	MGXD	YBYJ	YBYM	YBYP	YBYS	YBYV	YBVV	YBVY	YBYV	YBZB	YBZE	YBZH	YBZK
Aug-Oct 2017	303	3.4	184	41	78	25.8	43	124	2.6	58	16	50	39.9	32
Aug-Oct 2018	293	3.3	179	41	73	24.8	34	127	2.6	62	22	43	34.0	29
Nov-Jan 2019	281	3.2	176	37	68	24.3	27	127	2.5	65	18	45	35.1	28
Feb-Apr 2019	275	3.1	172	35	68	24.8	31	124	2.4	67	16	41	32.9	27
May-Jul 2019	267	3.0	168	35	63	23.6	33	121	2.4	66	16	39	32.4	21
<b>Aug-Oct 2019</b>	<b>255</b>	<b>2.9</b>	<b>157</b>	<b>40</b>	<b>58</b>	<b>22.9</b>	<b>27</b>	<b>116</b>	<b>2.3</b>	<b>62</b>	<b>16</b>	<b>38</b>	<b>32.5</b>	<b>23</b>
Change on quarter	-12	-0.1	-12	4	-4	-0.6	-6	-5	-0.1	-4	1	-2	0.1	2
Change %	-4.4		-7.0	12.5	-6.9		-18.7	-4.4		-6.5	3.7	-4.1		9.3
Change on year	-38	-0.4	-22	-2	-14	-1.8	-7	-11	-0.3	1	-6	-6	-1.5	-5
Change %	-13.1		-12.5	-3.9	-19.5		-19.6	-8.6		0.9	-27.0	-12.8		-19.0

Relationship between columns: 1=3+4+5; 8=10+11+12.

<sup>1</sup>Denominator = economically active for that age group.

Source: Labour Force Survey  
Labour market statistics enquiries: labour.market@ons.gov.uk

# ECONOMIC ACTIVITY AND INACTIVITY

## 10 Economic activity by age

United Kingdom (thousands) seasonally adjusted

	All aged 16 & over	16 - 64	16 - 17	18 - 24	25 - 34	35 - 49	50 - 64	65+
	1	2	3	4	5	6	7	8

### Economically active

People	MGSF	LF2K	YBZL	YBZO	YBZR	YBZU	LF3A	LFK8
Aug-Oct 2017	33,517	32,317	455	3,884	7,693	11,162	9,123	1,200
Aug-Oct 2018	33,865	32,605	416	3,913	7,759	11,183	9,332	1,260
Nov-Jan 2019	34,052	32,742	409	3,949	7,792	11,181	9,411	1,310
Feb-Apr 2019	34,050	32,730	425	3,864	7,815	11,165	9,461	1,321
May-Jul 2019	34,071	32,743	435	3,834	7,822	11,137	9,517	1,327
<b>Aug-Oct 2019</b>	<b>34,082</b>	<b>32,749</b>	<b>435</b>	<b>3,796</b>	<b>7,848</b>	<b>11,152</b>	<b>9,517</b>	<b>1,333</b>
Change on quarter	11	6	1	-38	27	15	1	5
Change %	0.0	0.0	0.2	-1.0	0.3	0.1	0.0	0.4
Change on year	216	144	19	-117	89	-31	185	73
Change %	0.6	0.4	4.6	-3.0	1.1	-0.3	2.0	5.8
Men	MGSG	YBSL	YBZM	YBZP	YBZS	YBZV	YBZY	YCAE
Aug-Oct 2017	17,745	17,014	216	2,008	4,136	5,883	4,771	731
Aug-Oct 2018	17,984	17,211	210	2,078	4,167	5,881	4,875	773
Nov-Jan 2019	18,045	17,248	202	2,077	4,183	5,881	4,904	797
Feb-Apr 2019	18,009	17,209	205	2,012	4,196	5,872	4,924	800
May-Jul 2019	17,971	17,198	210	1,991	4,191	5,866	4,940	773
<b>Aug-Oct 2019</b>	<b>18,029</b>	<b>17,236</b>	<b>209</b>	<b>1,993</b>	<b>4,197</b>	<b>5,878</b>	<b>4,959</b>	<b>793</b>
Change on quarter	58	38	-1	2	6	12	19	20
Change %	0.3	0.2	-0.5	0.1	0.1	0.2	0.4	2.6
Change on year	45	25	0	-85	30	-3	84	20
Change %	0.3	0.1	-0.2	-4.1	0.7	-0.1	1.7	2.6
Women	MGSF	LF2L	YBZN	YBZQ	YBZT	YBZW	LF3B	LFK9
Aug-Oct 2017	15,772	15,303	240	1,876	3,556	5,279	4,352	469
Aug-Oct 2018	15,881	15,394	207	1,835	3,593	5,302	4,457	487
Nov-Jan 2019	16,007	15,494	207	1,872	3,609	5,300	4,506	513
Feb-Apr 2019	16,042	15,521	220	1,853	3,619	5,292	4,537	521
May-Jul 2019	16,100	15,545	224	1,843	3,630	5,271	4,576	555
<b>Aug-Oct 2019</b>	<b>16,053</b>	<b>15,513</b>	<b>226</b>	<b>1,803</b>	<b>3,651</b>	<b>5,274</b>	<b>4,558</b>	<b>540</b>
Change on quarter	-47	-32	2	-40	21	3	-18	-15
Change %	-0.3	-0.2	0.8	-2.2	0.6	0.1	-0.4	-2.7
Change on year	171	119	19	-32	59	-28	101	53
Change %	1.1	0.8	9.4	-1.7	1.6	-0.5	2.3	10.8

### Economic activity rates (%)<sup>1</sup>

People	MGWG	LF22	YCAG	YCAJ	YCAM	YCAP	LF2C	LFL2
Aug-Oct 2017	63.5	78.5	32.1	68.8	86.5	87.1	73.5	10.3
Aug-Oct 2018	63.8	79.0	29.9	70.2	86.8	87.6	74.1	10.7
Nov-Jan 2019	64.1	79.3	29.4	71.1	87.1	87.7	74.4	11.0
Feb-Apr 2019	64.0	79.2	30.5	69.8	87.3	87.6	74.6	11.1
May-Jul 2019	63.9	79.2	31.2	69.5	87.3	87.5	74.7	11.1
<b>Aug-Oct 2019</b>	<b>63.9</b>	<b>79.2</b>	<b>31.1</b>	<b>69.1</b>	<b>87.6</b>	<b>87.6</b>	<b>74.5</b>	<b>11.1</b>
Change on quarter	-0.1	0.0	-0.1	-0.4	0.3	0.1	-0.2	0.0
Change on year	0.1	0.2	1.2	-1.1	0.8	0.0	0.4	0.4
Men	MGWH	MGSP	YCAH	YCAK	YCAN	YCAQ	MGWQ	MGWT
Aug-Oct 2017	68.7	83.1	29.7	69.7	93.2	93.0	78.3	13.7
Aug-Oct 2018	69.2	83.9	29.4	72.9	93.0	93.3	78.9	14.2
Nov-Jan 2019	69.4	84.0	28.3	73.2	93.2	93.4	79.1	14.5
Feb-Apr 2019	69.1	83.7	28.8	71.1	93.3	93.4	79.1	14.5
May-Jul 2019	68.9	83.6	29.5	70.7	93.1	93.3	79.1	14.0
<b>Aug-Oct 2019</b>	<b>69.0</b>	<b>83.8</b>	<b>29.2</b>	<b>71.0</b>	<b>93.2</b>	<b>93.5</b>	<b>79.2</b>	<b>14.3</b>
Change on quarter	0.1	0.1	-0.3	0.3	0.1	0.2	0.1	0.3
Change on year	-0.2	-0.1	-0.2	-1.9	0.2	0.2	0.3	0.1
Women	MGWI	LF23	YCAI	YCAL	YCAO	YCAR	LF2D	LFL3
Aug-Oct 2017	58.4	73.9	34.6	67.9	79.9	81.3	68.9	7.5
Aug-Oct 2018	58.6	74.2	30.4	67.2	80.6	82.0	69.5	7.7
Nov-Jan 2019	59.0	74.7	30.5	68.9	81.0	82.1	70.0	8.0
Feb-Apr 2019	59.0	74.8	32.4	68.4	81.2	82.1	70.2	8.1
May-Jul 2019	59.2	74.8	33.0	68.3	81.4	81.8	70.5	8.6
<b>Aug-Oct 2019</b>	<b>58.9</b>	<b>74.7</b>	<b>33.1</b>	<b>67.1</b>	<b>81.9</b>	<b>81.9</b>	<b>70.0</b>	<b>8.4</b>
Change on quarter	-0.2	-0.2	0.1	-1.2	0.5	0.1	-0.5	-0.3
Change on year	0.4	0.5	2.7	-0.2	1.3	-0.1	0.6	0.7

Relationship between columns: 1= 2+8; 2=3+4+5+6+7.

<sup>1</sup>Denominator = all persons in the relevant age group.

Data source: Labour Force Survey

Labour market statistics enquiries: labour.market@ons.gov.uk

# ECONOMIC ACTIVITY AND INACTIVITY

## 11 Economic inactivity: reasons

United Kingdom (thousands) seasonally adjusted

		Total aged 16-64	Economic inactivity by reason (aged 16 to 64)						Wanting/not wanting a job (aged 16 to 64)	
			Student	Looking after family / home	Temp sick	Long-term sick	Discouraged workers	Retired	Other	Does not want job
		1	2	3	4	5	6	7	8	9
		LF2M	LF63	LF65	LF67	LF69	LFL8	LF6B	LF6D	LFL9
										LFM2
People	Aug-Oct 2017	8,864	2,359	2,076	191	2,032	40	1,184	983	6,828
	Aug-Oct 2018	8,666	2,316	2,031	170	1,983	34	1,139	994	6,793
	Nov-Jan 2019	8,549	2,257	2,005	173	2,006	33	1,089	985	6,733
	Feb-Apr 2019	8,581	2,260	2,047	175	1,971	32	1,112	985	6,757
	May-Jul 2019	8,587	2,241	1,999	164	2,048	40	1,101	995	6,712
	<b>Aug-Oct 2019</b>	<b>8,606</b>	<b>2,280</b>	<b>1,966</b>	<b>174</b>	<b>2,072</b>	<b>32</b>	<b>1,117</b>	<b>965</b>	<b>6,767</b>
	Change on quarter	19	39	-32	11	24	-8	16	-31	55
	Change %	0.2	1.8	-1.6	6.7	1.2	-19.9	1.5	-3.1	0.8
	Change on year	-60	-35	-65	5	89	-2	-23	-29	-26
	Change %	-0.7	-1.5	-3.2	2.8	4.5	-6.7	-2.0	-2.9	-0.4
Men		YBSO	BEEX	BEAQ	BEDI	BEDL	YCFP	BEDR	BEDU	YBWA
	Aug-Oct 2017	3,452	1,202	233	100	998	22	486	411	2,597
	Aug-Oct 2018	3,314	1,152	221	79	953	24	467	417	2,556
	Nov-Jan 2019	3,290	1,141	215	87	951	21	477	398	2,547
	Feb-Apr 2019	3,341	1,156	234	93	930	23	497	409	2,607
	May-Jul 2019	3,364	1,135	226	72	964	24	506	437	2,591
	<b>Aug-Oct 2019</b>	<b>3,340</b>	<b>1,142</b>	<b>235</b>	<b>75</b>	<b>961</b>	<b>18</b>	<b>506</b>	<b>403</b>	<b>2,590</b>
	Change on quarter	-24	7	9	3	-3	-6	0	-34	-1
	Change %	-0.7	0.6	4.1	3.7	-0.3	-23.4	0.0	-7.8	-0.1
	Change on year	26	-11	14	-4	8	-6	39	-14	34
Women		LF2N	LF64	LF66	LF68	LF6A	LFM3	LF6C	LF6E	LFM4
	Aug-Oct 2017	5,412	1,157	1,843	90	1,035	18	698	572	4,231
	Aug-Oct 2018	5,351	1,163	1,810	91	1,029	10	672	576	4,237
	Nov-Jan 2019	5,259	1,116	1,790	86	1,054	12	613	587	4,186
	Feb-Apr 2019	5,240	1,104	1,813	82	1,040	9	615	576	4,151
	May-Jul 2019	5,223	1,106	1,773	91	1,084	16	595	558	4,120
	<b>Aug-Oct 2019</b>	<b>5,266</b>	<b>1,139</b>	<b>1,731</b>	<b>100</b>	<b>1,111</b>	<b>14</b>	<b>611</b>	<b>561</b>	<b>4,177</b>
	Change on quarter	42	32	-42	8	27	-2	16	3	56
	Change %	0.8	2.9	-2.3	9.1	2.5	-14.9	2.7	0.6	1.4
	Change on year	-85	-25	-79	9	81	4	-61	-15	-61
Percentage of economically inactive aged from 16 to 64 (%)										
People		LF6V	LF6X	LF6Z	LF73	LF75	LF77	LF79	LF7B	LF7D
	Aug-Oct 2017	100	26.6	23.4	2.1	22.9	0.5	13.4	11.1	77.0
	Aug-Oct 2018	100	26.7	23.4	2.0	22.9	0.4	13.1	11.5	78.4
	Nov-Jan 2019	100	26.4	23.5	2.0	23.5	0.4	12.7	11.5	78.8
	Feb-Apr 2019	100	26.3	23.9	2.0	23.0	0.4	13.0	11.5	78.8
	May-Jul 2019	100	26.1	23.3	1.9	23.8	0.5	12.8	11.6	78.2
	<b>Aug-Oct 2019</b>	<b>100</b>	<b>26.5</b>	<b>22.8</b>	<b>2.0</b>	<b>24.1</b>	<b>0.4</b>	<b>13.0</b>	<b>11.2</b>	<b>78.6</b>
Men		BEBP	BEEH	BEEK	BEEN	BEEQ	BEET	BEEW	BEEZ	BEAS
	Aug-Oct 2017	100	34.8	6.7	2.9	28.9	0.6	14.1	11.9	75.2
	Aug-Oct 2018	100	34.8	6.7	2.4	28.8	0.7	14.1	12.6	77.1
	Nov-Jan 2019	100	34.7	6.5	2.7	28.9	0.6	14.5	12.1	77.4
	Feb-Apr 2019	100	34.6	7.0	2.8	27.9	0.7	14.9	12.2	78.0
	May-Jul 2019	100	33.7	6.7	2.1	28.7	0.7	15.0	13.0	77.0
	<b>Aug-Oct 2019</b>	<b>100</b>	<b>34.2</b>	<b>7.0</b>	<b>2.2</b>	<b>28.8</b>	<b>0.5</b>	<b>15.1</b>	<b>12.1</b>	<b>77.5</b>
Women		LF6W	LF6Y	LF72	LF74	LF76	LF78	LF7A	LF7C	LF7E
	Aug-Oct 2017	100	21.4	34.1	1.7	19.1	0.3	12.9	10.6	78.2
	Aug-Oct 2018	100	21.7	33.8	1.7	19.2	0.2	12.6	10.8	79.2
	Nov-Jan 2019	100	21.2	34.0	1.6	20.1	0.2	11.7	11.2	79.6
	Feb-Apr 2019	100	21.1	34.6	1.6	19.9	0.2	11.7	11.0	79.2
	May-Jul 2019	100	21.2	33.9	1.7	20.7	0.3	11.4	10.7	78.9
	<b>Aug-Oct 2019</b>	<b>100</b>	<b>21.6</b>	<b>32.9</b>	<b>1.9</b>	<b>21.1</b>	<b>0.3</b>	<b>11.6</b>	<b>10.7</b>	<b>79.3</b>

Relationship between columns : 1=2+3+4+5+6+7+8; 1=9+10.

Data Source: Labour Force Survey.

Labour market statistics enquiries: [labour.market@ons.gov.uk](mailto:labour.market@ons.gov.uk)

1. This series comprises those who say they would like a regular paid job, but who do not meet the internationally agreed definition of unemployment because they have not been looking for work in the last four weeks and/or they were unable to start working within two weeks.

# ECONOMIC ACTIVITY AND INACTIVITY

## 12 Educational status, economic activity and inactivity of people aged from 16 to 24

August - October 2019

United Kingdom (thousands) seasonally adjusted

All aged 16 to 24					In full-time education (FTE)				Not in full-time education (FTE) <sup>1</sup>			
Total	Employed	Unemployed	Economically inactive		Total	Employed <sup>2</sup>	Unemployed <sup>2</sup>	Economically inactive	Total	Employed	Unemployed	Economically inactive
1	2	3	4		5	6	7	8	9	10	11	12

### Levels

<b>People</b>												
16-17	1,401	348	87	965	1,194	255	55	883	207	93	32	82
18-24	5,495	3,411	386	1,699	1,817	592	71	1,153	3,678	2,818	314	546
16-24	6,896	3,759	473	2,664	3,011	848	127	2,037	3,885	2,911	346	628
<b>Men</b>												
16-17	718	157	52	508	605	108	29	468	113	49	23	40
18-24	2,806	1,767	225	813	866	257	30	579	1,940	1,510	196	234
16-24	3,524	1,924	278	1,321	1,471	365	59	1,047	2,053	1,559	219	275
<b>Women</b>												
16-17	683	191	35	457	589	147	26	416	94	44	9	41
18-24	2,689	1,643	160	886	951	335	42	574	1,738	1,308	119	311
16-24	3,372	1,834	195	1,343	1,540	483	67	990	1,832	1,352	127	353

### Changes on quarter

<b>People</b>												
16-17	9	-2	3	8	-7	-8	-6	7	16	6	9	1
18-24	-20	-19	-18	17	-24	-46	-11	33	3	26	-7	-16
16-24	-11	-22	-15	26	-31	-54	-17	40	20	32	2	-14
<b>Men</b>												
16-17	5	-7	6	6	6	-2	-1	10	-2	-5	7	-4
18-24	-10	23	-20	-13	-18	-9	-7	-2	8	31	-13	-11
16-24	-6	16	-14	-7	-12	-11	-9	8	6	26	-6	-15
<b>Women</b>												
16-17	5	5	-3	3	-13	-6	-4	-3	18	11	2	5
18-24	-10	-42	2	30	-6	-37	-3	35	-4	-5	6	-5
16-24	-5	-38	-1	33	-19	-43	-8	32	14	6	7	1

### Rates(%)<sup>3</sup>

<b>People</b>												
16-17		24.9	20.0	68.9		21.4	17.8	74.0		45.0	25.4	39.6
18-24		62.1	10.2	30.9		32.6	10.7	63.5		76.6	10.0	14.8
16-24		54.5	11.2	38.6		28.2	13.0	67.6		74.9	10.6	16.2
<b>Men</b>												
16-17		21.9	25.1	70.8		17.8	21.4	77.3		43.6	32.0	36.0
18-24		63.0	11.3	29.0		29.7	10.4	66.9		77.8	11.5	12.1
16-24		54.6	12.6	37.5		24.8	14.0	71.2		76.0	12.3	13.4
<b>Women</b>												
16-17		28.0	15.3	66.9		25.0	15.0	70.6		46.8	16.5	44.0
18-24		61.1	8.9	32.9		35.3	11.0	60.4		75.2	8.3	17.9
16-24		54.4	9.6	39.8		31.3	12.3	64.3		73.8	8.6	19.3

### Changes on quarter

<b>People</b>												
16-17		-0.3	0.7	0.1		-0.6	-1.0	1.0		-0.8	4.8	-2.6
18-24		-0.1	-0.4	0.4		-2.1	-0.7	2.6		0.6	-0.3	-0.4
16-24		-0.2	-0.3	0.4		-1.5	-0.7	2.0		0.4	-0.1	-0.4
<b>Men</b>												
16-17		-1.1	3.0	0.3		-0.5	-0.5	0.8		-4.0	9.7	-2.9
18-24		1.0	-1.0	-0.3		-0.4	-1.9	1.1		1.3	-0.9	-0.6
16-24		0.5	-0.7	-0.1		-0.5	-1.4	1.1		1.1	-0.5	-0.8
<b>Women</b>												
16-17		0.5	-1.4	-0.1		-0.5	-1.5	1.1		3.5	-1.2	-3.4
18-24		-1.3	0.3	1.2		-3.7	0.2	4.0		-0.1	0.4	-0.2
16-24		-1.0	0.2	1.0		-2.4	-0.3	2.9		-0.2	0.4	-0.1

Relationship between columns: 1=5+9; 2=6+10; 3=7+11.

Source: Labour Force Survey

Labour market statistics enquiries: labour.market@ons.gov.uk

1. Not in full-time education includes people in part-time education and/or some form of training. Estimates of the number of young people who were not in employment, education or training ("NEET") cannot therefore be derived from this table. Estimates of young people who were NEET are published separately at:

<https://www.ons.gov.uk/employmentandlabourmarket/peopleinwork/unemployment/bulletins/youngpeoplenotineducationemploymentortrainingneet/latest>

2. People in full-time education are employed if they have a part-time job or unemployed if they are looking for part-time employment.

3. Denominator = all persons in the relevant age group for economically active, total in employment and economically inactive; economically active for unemployment.

# 17 International comparisons of employment and unemployment

Employment rates as published by EUROSTAT: (not seasonally adjusted)					Unemployment rates as published by EUROSTAT on 29 November 2019 (seasonally adjusted)					
		Latest period	Employment rate (%) <sup>1,2</sup>	Change on year %			Latest Period	Unemployment rate (%) <sup>3</sup>	Change on month %	Change on year %
European Union (EU)					European Union (EU)					
Austria	YXSN	Apr-Jun 19	73.4	0.4	Austria	ZXDS	Oct 19	4.6	0.1	-0.2
Belgium	YXSO	Apr-Jun 19	65.6	1.9	Belgium	ZXDI	Oct 19	5.6	0.0	-0.2
Bulgaria	A495	Apr-Jun 19	70.7	2.8	Bulgaria	A492	Oct 19	4.2	0.1	-0.7
Croatia	GUMI	Apr-Jun 19	61.8	0.7	Croatia	GUMJ	Oct 19	6.6	-0.1	-1.1
Cyprus	A4AC	Jul-Sep 19	70.8	1.3	Cyprus	A4AN	Oct 19	7.1	0.1	-0.4
Czech Republic	A4AD	Apr-Jun 19	75.0	0.3	Czech Republic	A4AO	Oct 19	2.2	0.1	0.1
Denmark	YXSP	Apr-Jun 19	75.0	0.7	Denmark	ZXDJ	Oct 19	5.3	0.0	0.4
Estonia	A4AE	Jul-Sep 19	76.2	1.3	Estonia	A4AP	Sep 19	4.3	0.4	-1.4
Finland	YXSQ	Apr-Jun 19	73.7	0.7	Finland	ZXDU	Oct 19	6.7	0.0	-0.3
France	YXSR	Jul-Sep 19	65.5	-0.2	France	ZXDN	Oct 19	8.5	-0.1	-0.5
Germany	YXSS	Apr-Jun 19	76.5	1.1	Germany	ZXDK	Oct 19	3.1	0.0	-0.2
Greece	YXST	Apr-Jun 19	57.1	1.8	Greece	ZXDL	Aug 19	16.7	-0.2	-2.2
Hungary	A4AF	Apr-Jun 19	70.0	0.7	Hungary	A4AQ	Sep 19	3.5	0.1	-0.2
Ireland	YXSU	Apr-Jun 19	69.1	0.6	Ireland	ZXDO	Nov 19	4.8	0.0	-0.8
Italy	YXSV	Apr-Jun 19	59.4	0.3	Italy	ZXDP	Oct 19	9.7	-0.2	-1.0
Latvia	A4AG	Apr-Jun 19	72.0	0.3	Latvia	A4AR	Oct 19	6.1	0.0	-0.9
Lithuania	A4AH	Apr-Jun 19	73.0	0.9	Lithuania	A4AS	Oct 19	6.4	-0.2	0.3
Luxembourg	YXSW	Apr-Jun 19	68.3	2.1	Luxembourg	ZXDQ	Oct 19	5.4	0.0	-0.1
Malta	A4AI	Apr-Jun 19	73.1	1.9	Malta	A4AT	Oct 19	3.4	0.0	-0.2
Netherlands	YXSX	Jul-Sep 19	78.4	0.7	Netherlands	ZXDR	Oct 19	3.5	0.0	-0.2
Poland	A4AJ	Apr-Jun 19	68.2	0.5	Poland	A4AU	Oct 19	3.2	0.0	-0.7
Portugal	YXSY	Jul-Sep 19	71.0	0.8	Portugal	ZXDT	Oct 19	6.5	0.0	-0.1
Romania	A494	Apr-Jun 19	66.4	0.9	Romania	A48Z	Oct 19	4.0	-0.1	-0.1
Slovak Republic	A4AK	Apr-Jun 19	68.1	1.0	Slovak Republic	A4AV	Oct 19	5.6	0.0	-0.6
Slovenia	A4AL	Apr-Jun 19	72.5	1.4	Slovenia	A4AW	Oct 19	4.3	0.0	-0.3
Spain	YXSZ	Jul-Sep 19	63.5	0.5	Spain	ZXDM	Oct 19	14.2	0.0	-0.4
Sweden	YXTA	Apr-Jun 19	77.6	-0.2	Sweden <sup>5</sup>	ZXDV	Oct 19	6.6	0.0	0.3
United Kingdom (*)	ANZ6	Apr-Jun 19	75.0	0.5	United Kingdom (*)	ZXDW	Aug 19	3.8	0.0	-0.2
Total EU <sup>4</sup>	A496	Apr-Jun 19	69.3	0.7	Total EU <sup>4</sup>	A493	Oct 19	6.3	0.0	-0.4
Eurozone <sup>4</sup>	YXTC	Apr-Jun 19	68.0	0.7	Eurozone <sup>4</sup>	ZXDH	Oct 19	7.5	-0.1	-0.5
Employment rates published by the OECD (seasonally adjusted)					Unemployment rates as published by national statistical offices (seasonally adjusted)					
Canada	A48O	Jul-Sep 19	74.5	0.7	Canada	ZXDZ	Oct 19	5.5	0.0	-0.2
Japan	A48P	Jul-Sep 19	77.9	0.9	Japan	ZXDY	Oct 19	2.4	0.0	0.0
United States	A48Q	Jul-Sep 19	71.5	0.8	United States	ZXDX	Nov 19	3.5	-0.1	-0.2

Sources: EUROSTAT, OECD, national statistical offices.  
Labour market statistics enquiries: labour.market@ons.gov.uk

(\*) Note: The UK rates shown in this table are as published by EUROSTAT (the EUs statistical office). See Table 1 for the latest rates for the UK as published by ONS.

- All employment rates shown in this table are for those aged from 15 to 64 except for the rate for the United States published by OECD which are for those aged from 16 to 64.
- The employment rates for the EU are published by EUROSTAT and are not seasonally adjusted. EUROSTAT do not publish seasonally adjusted (SA) employment rates but SA rates for some EU countries are published by OECD. These OECD employment rates are available on our website at [dataset A10](#).
- Unemployment rates published by EUROSTAT for most EU countries (but not for the UK), are calculated by extrapolating from the most recent LFS data using monthly registered unemployment data. A standard population basis (15-74) is used by EUROSTAT except for Spain, Italy and the UK (16-74). The unemployment rate for the US is based on those aged 16 and over, but the rates for Canada and Japan are for those aged 15 and over. All unemployment rates shown in this table are seasonally adjusted.
- The "Total EU" series consist of all 28 EU countries. The Eurozone figures consist of the following EU countries: Austria, Belgium, Cyprus, Estonia, Finland, France, Germany, Greece, Ireland, Italy, Latvia, Lithuania, Luxembourg, Malta, Netherlands, Portugal, Slovak Republic, Slovenia and Spain.
- The EU unemployment rates are as published on the EUROSTAT database. For Sweden the rates on the database differ from those shown in the EUROSTAT News Release published on 29 November 2019. This is because the figures for Sweden on the database are seasonally adjusted estimates but the figures for Sweden shown in the News Release are the trend component.

## 18 Labour disputes

United Kingdom, not seasonally adjusted

	Working days lost (thousands) <sup>1,2</sup>	Working days lost in the Public Sector (thousands) <sup>1,2</sup>	Working days lost in the Private Sector (thousands) <sup>1,2</sup>	Number of stoppages <sup>3</sup>	Number of stoppages in the Public Sector	Number of stoppages in the Private Sector	Workers involved (thousands) <sup>1,3</sup>
	1	2	3	4	5	6	7
	BBFW	F8XZ	F8Y2	BLUU	F8Y3	F8Y4	BLUT
2017 October	8	0	8	11	1	10	3
2018 October	16	9	7	16	5	11	9
November	11	0	11	8	1	7	3
December	5	1	5	7	2	5	1
2019 January	11	1	11	10	2	8	6
February	7	2	5	11	5	6	6
March	9	1	8	14	6	8	5
April	2	1	2	8	1	7	1
May	10	1	10	14	2	12	5
June	12	1	12	24	5	19	3
July	11	4	7	24	9	15	7
August	7	1	6	10	2	8	2
September (r)	9	1	8	14	3	11	3
October (p)	8	1	7	10	4	6	2
Cumulative totals 12 months to:							
Oct 18	274	30	244	82	26	56	42
Oct 19 (p)	104	13	90	95	26	69	23

Relationship between columns 1=2+3; 4=5+6

Data source: ONS Labour Disputes Survey  
Labour disputes enquiries 01633 455400

- Estimates of working days lost and workers involved are shown to the nearest thousand. Unrounded estimates of less than 500 therefore round to zero.
- Due to rounding the working days lost for the public and private sectors may not add up to the total working days lost.
- The latest 12 month cumulative totals for the figures in these columns will not necessarily equal the sum of the 12 months as some disputes continue for over one month. These disputes appear in each month's data, but only once in the total.

# REDUNDANCIES

## 22 Redundancies: level and rates <sup>1</sup>

United Kingdom (seasonally adjusted)

	People (aged 16 and over)		Men (aged 16 and over)		Women (aged 16 and over)	
	Level (000s)	Rate <sup>1</sup>	Level (000s)	Rate <sup>1</sup>	Level (000s)	Rate <sup>1</sup>
	BEAO	BEIR	BEIU	BEIX	BEJA	BEJD
Aug-Oct 2017	100	3.7	52	3.8	48	3.6
Aug-Oct 2018	83	3.0	46	3.3	37	2.7
Nov-Jan 2019	91	3.3	53	3.8	38	2.8
Feb-Apr 2019	108	3.9	64	4.6	44	3.2
May-Jul 2019	98	3.5	51	3.7	47	3.4
<b>Aug-Oct 2019</b>	<b>118</b>	<b>4.3</b>	<b>62</b>	<b>4.5</b>	<b>56</b>	<b>4.1</b>
change on quarter	21	0.7	11	0.8	10	0.7
change %	20.9		21.2		20.6	
change on year	35	1.3	16	1.2	19	1.3
change %	42.8		35.7		51.5	

Data source: Labour Force Survey

Labour market statistics enquiries: [labour.market@ons.gov.uk](mailto:labour.market@ons.gov.uk)

1. The redundancy rate is the ratio of the redundancy level for the given quarter to the seasonally adjusted number of employees in the previous quarter, multiplied by 1,000.