

Statistical bulletin

# Consumer price inflation, UK: April 2026

Price indices, percentage changes, and weights for the different measures of consumer price inflation.

Contact:  
Consumer Price Inflation team  
cpi@ons.gov.uk  
+44 1633 456900, or 0808 196  
1267 for recorded message

Release date:  
20 May 2026

Next release:  
17 June 2026

## Table of contents

1. [Main points](#)
2. [Consumer price inflation rates](#)
3. [Notable movements in prices](#)
4. [Latest movements in CPIH inflation](#)
5. [Latest movements in CPI inflation](#)
6. [Data on consumer price inflation](#)
7. [Glossary](#)
8. [Data sources and quality](#)
9. [Related links](#)
10. [Cite this statistical bulletin](#)

# 1 . Main points

- The Consumer Prices Index including owner occupiers' housing costs (CPIH) rose by 3.0% in the 12 months to April 2026, down from 3.4% in the 12 months to March.
- On a monthly basis, CPIH rose by 0.8% in April 2026, compared with a rise of 1.2% in April 2025.
- The Consumer Prices Index (CPI) rose by 2.8% in the 12 months to April 2026, down from 3.3% in the 12 months to March.
- On a monthly basis, CPI rose by 0.7% in April 2026, compared with a rise of 1.2% in April 2025.
- Housing and household services made the largest downward contribution to the monthly change in both CPIH and CPI annual rates; an upward contribution from a large increase in motor fuel prices was counteracted by downward effects from other categories in the transport division.
- Core CPIH (CPIH excluding energy, food, alcohol and tobacco) rose by 2.8% in the 12 months to April 2026, down from 3.3% in the 12 months to March; the CPIH goods annual rate rose from 2.1% to 2.4%, while the CPIH services annual rate fell from 4.3% to 3.4%.
- Core CPI (CPI excluding energy, food, alcohol and tobacco) rose by 2.5% in the 12 months to April 2026, down from 3.1% in the 12 months to March; the CPI goods annual rate rose from 2.1% to 2.4%, while the CPI services annual rate fell from 4.5% to 3.2%.

## 2 . Consumer price inflation rates

Table 1: CPIH, OOH component and CPI index values, and annual and monthly rates  
UK, April 2025 to April 2026

		<b>CPIH Index (UK, 2015 = 100)</b>	<b>CPIH 12- month rate (%)</b>	<b>CPIH 1- month rate (%)</b>	<b>CPI Index (UK, 2015=100)</b>	<b>CPI 12- month rate (%)</b>	<b>CPI 1- month rate (%)</b>	<b>OOH Index (UK, 2015=100)</b>	<b>OOH 12- month rate (%)</b>
<b>2025</b>	<b>Apr</b>	137.7	4.1	1.2	138.2	3.5	1.2	133.2	6.9
	<b>May</b>	138.0	4.0	0.2	138.4	3.4	0.2	133.7	6.7
	<b>Jun</b>	138.4	4.1	0.3	138.9	3.6	0.3	134.2	6.4
	<b>Jul</b>	138.5	4.2	0.0	139.0	3.8	0.1	134.0	5.5
	<b>Aug</b>	138.9	4.1	0.3	139.3	3.8	0.3	134.5	5.3
	<b>Sep</b>	138.9	4.1	0.1	139.3	3.8	0.0	135.1	5.2
	<b>Oct</b>	139.5	3.8	0.4	139.8	3.6	0.4	135.7	4.8
	<b>Nov</b>	139.4	3.5	-0.1	139.5	3.2	-0.2	136.5	4.5
	<b>Dec</b>	139.9	3.6	0.4	140.1	3.4	0.4	136.8	4.2
	<b>2026</b>	<b>Jan</b>	139.4	3.2	-0.3	139.5	3.0	-0.5	137.0
<b>Feb</b>		140.0	3.2	0.4	140.1	3.0	0.4	137.4	3.8
<b>Mar</b>		140.8	3.4	0.6	141.0	3.3	0.7	137.7	3.6
<b>Apr</b>		141.8	3.0	0.8	142.1	2.8	0.7	137.9	3.6

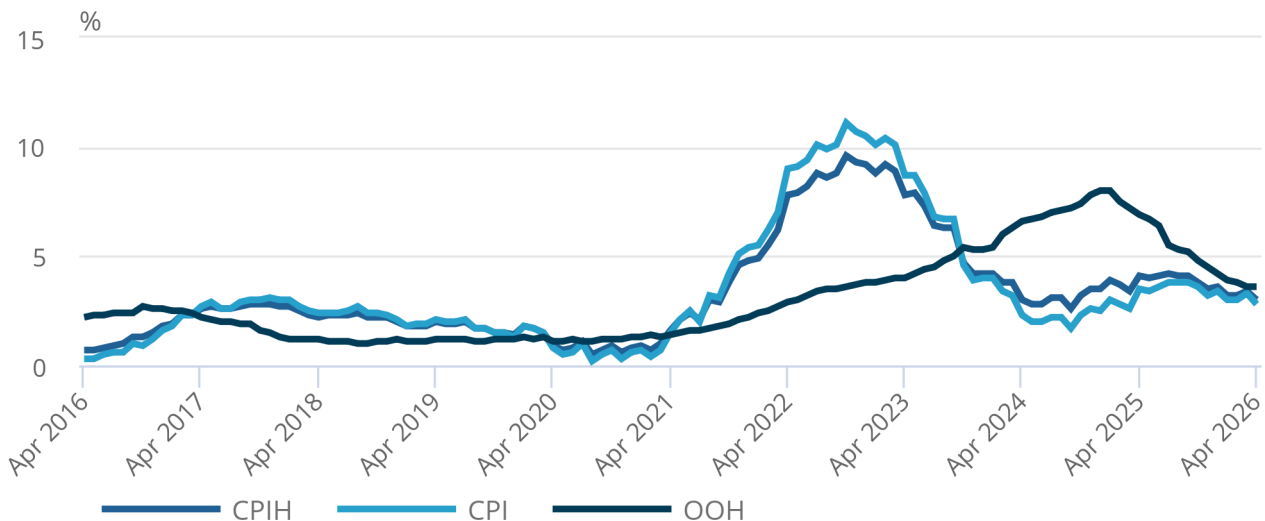
Source: Consumer price inflation from the Office for National Statistics

## Figure 1: CPI annual inflation rate lowest since March 2025

CPIH, owner occupiers' housing (OOH) costs component and CPI annual inflation rates, UK, April 2016 to April 2026

### Figure 1: CPI annual inflation rate lowest since March 2025

CPIH, owner occupiers' housing (OOH) costs component and CPI annual inflation rates, UK, April 2016 to April 2026



Source: Consumer price inflation from the Office for National Statistics

The Consumer Prices Index including owner occupiers' housing costs (CPIH) rose by 3.0% in the 12 months to April 2026, down from 3.4% in the 12 months to March (Figure 1).

On a monthly basis, CPIH rose by 0.8% in April 2026, compared with a rise of 1.2% in April 2025.

The Consumer Prices Index (CPI) rose by 2.8% in the 12 months to April 2026, down from 3.3% in the 12 months to March.

On a monthly basis, CPI rose by 0.7% in April 2026, compared with a rise of 1.2% in April 2025.

The main drivers of the annual inflation rate for CPIH and CPI are the same where they are common to both measures. However, the owner occupiers' housing (OOH) costs component accounts for approximately 18% of the CPIH and is the main driver for differences between the CPIH and CPI inflation rates. This makes CPIH our most comprehensive measure of inflation. We cover this in more detail in [Section 4: Latest movements in CPIH inflation](#) and provide a commentary on the CPI in [Section 5: Latest movements in CPI inflation](#). We also cover both CPIH and CPI in [Section 3: Notable movements in prices](#), though the figures reflect CPIH.

### 3 . Notable movements in prices

Table 2: CPIH annual and monthly inflation rates by division  
UK, April 2025, March 2026, and April 2026

	CPIH 12-month rate (%)		CPIH 1-month rate (%)	
	March 2026	April 2026	April 2025	April 2026
<b>CPIH All items</b>	3.4	3.0	1.2	0.8
<b>Food and non-alcoholic beverages</b>	3.7	3.0	0.7	0.0
<b>Alcohol and tobacco</b>	3.3	2.8	0.4	0.0
<b>Clothing and footwear</b>	-0.8	0.7	-1.1	0.4
<b>Housing and household services</b>	4.3	3.0	1.8	0.4
<b>of which owner occupiers' housing costs</b>	3.6	3.6	0.2	0.2
<b>Furniture and household goods</b>	-0.4	0.5	-1.7	-0.8
<b>Health</b>	3.1	2.4	0.3	-0.3
<b>Transport</b>	4.7	4.5	3.8	3.6
<b>Communication</b>	4.1	4.5	4.3	4.7
<b>Recreation and culture</b>	2.8	1.7	1.2	0.2
<b>Education</b>	5.1	5.1	0.0	0.0
<b>Restaurants and hotels</b>	4.0	4.4	0.6	1.0
<b>Miscellaneous goods and services</b>	2.5	2.6	0.2	0.4
<b>All goods</b>	2.1	2.4	0.3	0.6
<b>All services</b>	4.3	3.4	1.8	0.9
<b>CPIH exc food, energy, alcohol and tobacco (core CPIH)</b>	3.3	2.8	1.3	0.7

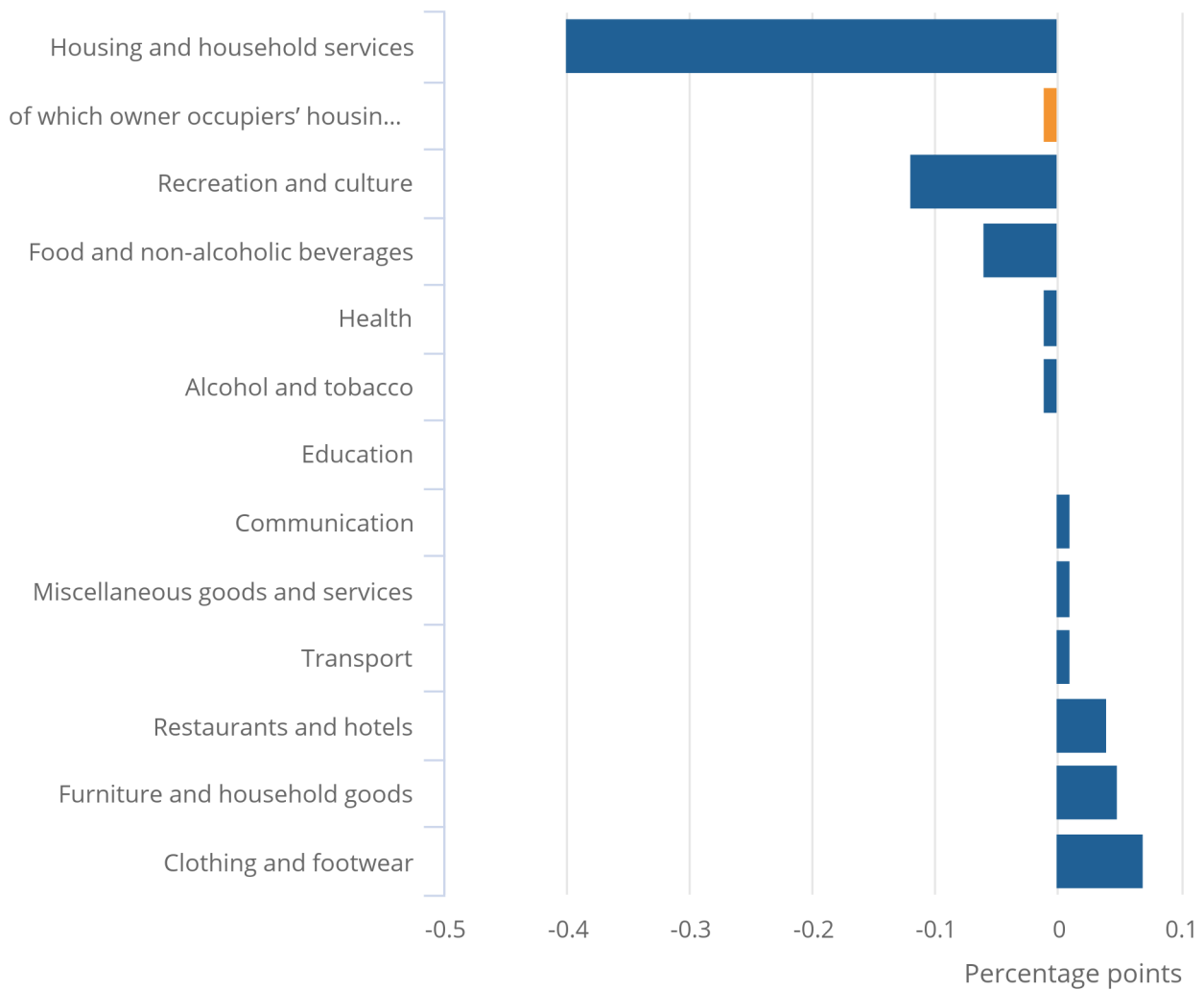
Source: Consumer price inflation from the Office for National Statistics

**Figure 2: Housing and household services (principally electricity and gas) made the largest downward contribution to the change in CPIH annual inflation**

Contributions to change in the CPIH annual inflation rate, UK, between March and April 2026

Figure 2: Housing and household services (principally electricity and gas) made the largest downward contribution to the change in CPIH annual inflation

Contributions to change in the CPIH annual inflation rate, UK, between March and April 2026



Source: Consumer price inflation from the Office for National Statistics

Notes:

1. Individual contributions may not sum to the total because of rounding.
2. More information on the contents of each division can be found in Table 3 of our [Consumer price inflation dataset](#).

Figure 2 shows the contributions from the 12 divisions to the change in the annual Consumer Prices Index including owner occupiers' housing costs (CPIH) inflation rate between March and April 2026. These sum to the change in the annual rate between the latest two months from 3.4% to 3.0%.

The decrease in the rate into April 2026 reflected downward contributions from five divisions, partially offset by upward contributions from six divisions. The largest downward contribution came from housing and household services, particularly electricity and gas. This was partially offset by an upward contribution from clothing and footwear.

## Housing and household services

The 12-month rate for housing and household services was 3.0% in April 2026, down from 4.3% in March. Prices rose by 0.4% in the month to April 2026, compared with 1.8% a year ago.

The easing in the 12-month rate between March 2026 and April 2026 reflected a downward effect from electricity, where prices fell by 8.4% in April 2026 compared with a rise of 2.9% a year ago. The fall in prices came partly from changes to standard variable tariffs, where there was a [change in the Office of Gas and Electricity Markets \(Ofgem\) energy price cap in April 2026](#). Ofgem estimated that for an average household paying by direct debit for dual fuel, this equates to an annual bill of £1,641, which is a fall of £117.

The price cap fell in part because global wholesale energy prices reduced in the 12-week assessment period used by [Ofgem](#) to calculate the April to June 2026 (Q2) price cap. The assessment period ran from 15 November 2025 to 13 February 2026, which was before the outbreak of the conflict in the Middle East.

The price cap also fell following the implementation of the UK [government April energy bill announcement](#). The UK government stated that it would take an average of £150 off the cost of energy bills from April 2026 by making policy changes that would result in lowering the per-unit price.

The fall in prices also came partly from changes to fixed tariffs which were affected by the government's energy bill announcement, but not by the Ofgem price cap.

The easing in the 12-month rate also reflected a downward effect from gas, where prices fell by 4.4% in April 2026, compared with a rise of 7.5% a year ago. Fixed and variable gas tariffs were affected by the Ofgem price cap and implementation of the government announcement in a similar way to electricity tariffs.

There was a slight counteracting effect resulting from domestic heating oil, where prices increased by 8.5% in April 2026, compared with a fall of 7.7% a year ago. Prices for domestic heating oil are not capped in a similar way to electricity and gas prices.

Sewerage collection costs also provided a downward effect, where prices rose by 5.8% in April 2026, compared with a rise of 25.9% a year ago. In December 2024 the Water Services Regulation Authority ([Ofwat](#)) announced that the average price increase charged by water and wastewater companies in England and Wales between 2025 and 2030 would be capped at 36%. Water and wastewater companies were allowed to frontload the price increases, resulting in larger price increases in 2025 than in 2026.

As the Ofwat announcement also applied to water companies, water supply provided a further downward effect, where prices rose by 9.0% this year, compared with a rise of 26.4% a year ago.

There was also a small downward effect from owner occupiers' housing (OOH) costs. These rose by 3.6% in the 12 months to April 2026, the same rate as the 12 months to March. Before this month, the rate had slowed for 14 consecutive months. Monthly OOH costs rose by 0.2% in April 2026, the same rate as a year ago.

## Recreation and culture

Recreation and culture prices rose by 0.2% in the month to April 2026, compared with 1.2% a year ago. This led to a 12-month rate of 1.7% in April 2026, down from 2.8% in March.

The largest contribution to the downward effect came from package holidays. Most of the foreign holiday categories included within this category measure prices for holidays that take place during the week that index day occurs. In 2025, index day was shortly before Easter, therefore it occurred during a holiday period. In 2026, however, index day occurred over a week after Easter, so it did not occur in a holiday period. It is likely that this "Easter effect" has caused the downward effect from package holidays.

Computer game downloads also provided a large downward effect, with prices falling by 18.1% in April 2026, compared with a rise of 21.1% a year ago.

## Food and non-alcoholic beverages

Food and non-alcoholic beverage prices rose by 3.0% in the 12 months to April 2026, down from 3.7% in the 12 months to March. On a monthly basis, food and non-alcoholic beverage prices were little changed in April 2026, but rose by 0.7% a year ago.

There were downward effects to the change in the annual rate from 5 of the 11 food and non-alcoholic beverages classes. These were:

- meat, down 0.03 percentage points
- sugar, jam, honey, syrups, chocolate and confectionery, down 0.03 percentage points
- oils and fats, down 0.01 percentage points
- coffee, tea and cocoa, down 0.01 percentage points
- mineral waters, soft drinks and juices, down 0.01 percentage points

The downward contributions were counteracted slightly by upward effects from two classes. These were vegetables, up 0.01 percentage points, and milk, cheese and eggs, up 0.01 percentage points.

## Clothing and footwear

Clothing and footwear prices rose by 0.7% in the 12 months to April 2026, compared with a fall of 0.8% in the 12 months to March (Figure 3). Monthly prices rose by 0.4% in April 2026, compared with a fall of 1.1% a year ago.

**Figure 3: Clothing and footwear inflation rate rebounded following last month's fall**

CPIH, and clothing and footwear 12-month inflation rates, UK, April 2016 to April 2026

### Figure 3: Clothing and footwear inflation rate rebounded following last month's fall

CPIH, and clothing and footwear 12-month inflation rates, UK, April 2016 to April 2026



**Source: Consumer price inflation from the Office for National Statistics**

Much of the upward effect came from garments for men, women and children where prices rose by 0.5% in April 2026 compared with a fall of 1.0% a year ago. The price movement may reflect changes in the proportion of discounted prices in the datasets which saw a large rise between March and April last year but not this year.

There was also an upward effect from footwear where prices rose by 0.4% in April 2026 compared with a fall of 1.8% a year ago. The price movement may also reflect changes in the proportion of discounted prices in the datasets, which saw a large rise between March and April last year and a large fall this year.

## Transport

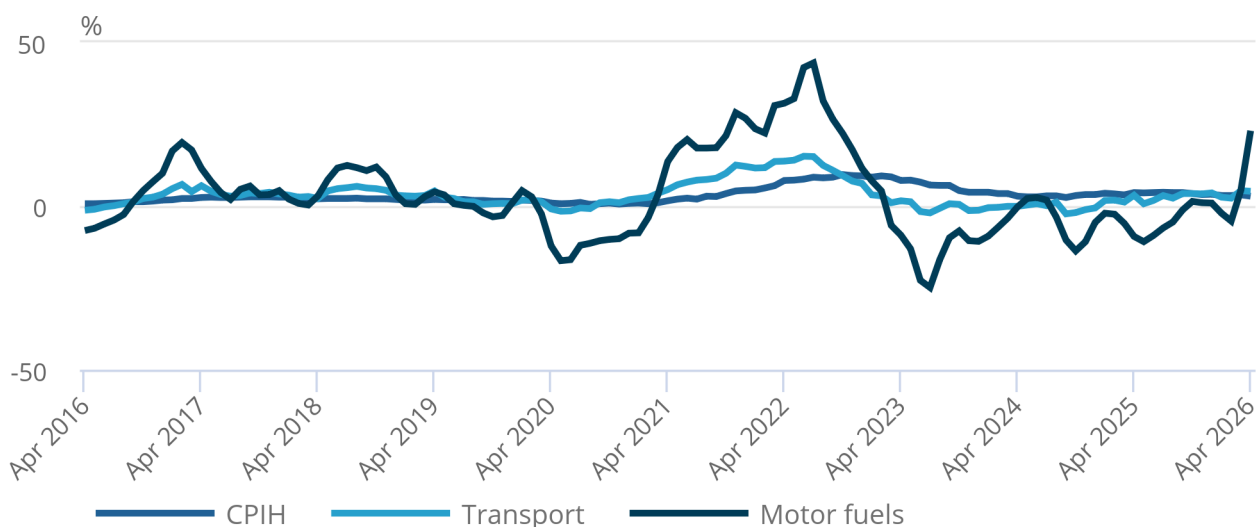
Prices in the transport division rose overall by 4.5% in the 12 months to April 2026, down from 4.7% in the 12 months to March (Figure 4). On a monthly basis, prices rose by 3.6% in April 2026, compared with a rise of 3.8% a year ago.

### Figure 4: Motor fuels inflation rate was at its highest since September 2022

CPIH, transport and motor fuels 12-month inflation rates, UK, April 2016 to April 2026

### Figure 4: Motor fuels inflation rate was at its highest since September 2022

CPIH, transport and motor fuels 12-month inflation rates, UK, April 2016 to April 2026



Source: Consumer price inflation from the Office for National Statistics

The largest upward effect came from motor fuels. The average price of petrol rose by 16.6 pence per litre between March and April 2026, compared with a fall of 3.0 pence per litre between March and April 2025. The average price of petrol stood at 156.8 pence per litre in April 2026, the highest price since November 2022, when it was 163.6 pence per litre because of the war in Ukraine. Motor fuel prices are collected across the month, and an average is used in constructing the indices.

Diesel prices rose by 31.3 pence per litre in April 2026, compared with a fall of 3.1 pence per litre in April 2025. The average price stood at 190.0 pence per litre in April 2026, the highest price since July 2022, when it was 197.9 pence per litre.

These movements resulted in overall motor fuel prices rising by 23.0% in the 12 months to April 2026, compared with a rise of 4.9% in the 12 months to March. The April figure was the highest annual increase recorded since September 2022.

The largest downward effect came from vehicle excise duty (VED) which rose by 3.9% in April 2026. Although VED is only generally updated once a year, in April 2025 it rose by 25.8% before it fell by 8.7% in May 2025 to reflect the April 2025 growth rate being overstated as a result of an [error](#).

Air fares also provided a downward effect, falling by 3.3% in April 2026, compared with a rise of 27.5% a year ago. In 2025, index day fell slightly before Easter, so all flights that departed in April were during a holiday period. However, index day fell over a week after Easter in 2026, so no flights departed in a holiday period. It is likely this "Easter effect" that has caused the downward effect from air fares.

As the weight for this division increased notably between 2025 and 2026, this amplified the effect of the April 2026 monthly movement on the headline rate. This resulted in a higher-than-expected positive contribution to the change in the CPIH 12-month rate. It is for this reason, that transport prices rose at a lower rate in April 2026 than in April 2025, but the transport division provided an upward effect to the CPIH 12-month rate.

Airfare prices for flights collected three months and six months in advance of departure were collected before the outbreak of war in the Middle East on 28 February 2026. Airfare prices for flights collected one month in advance of departure were collected after the outbreak of war.

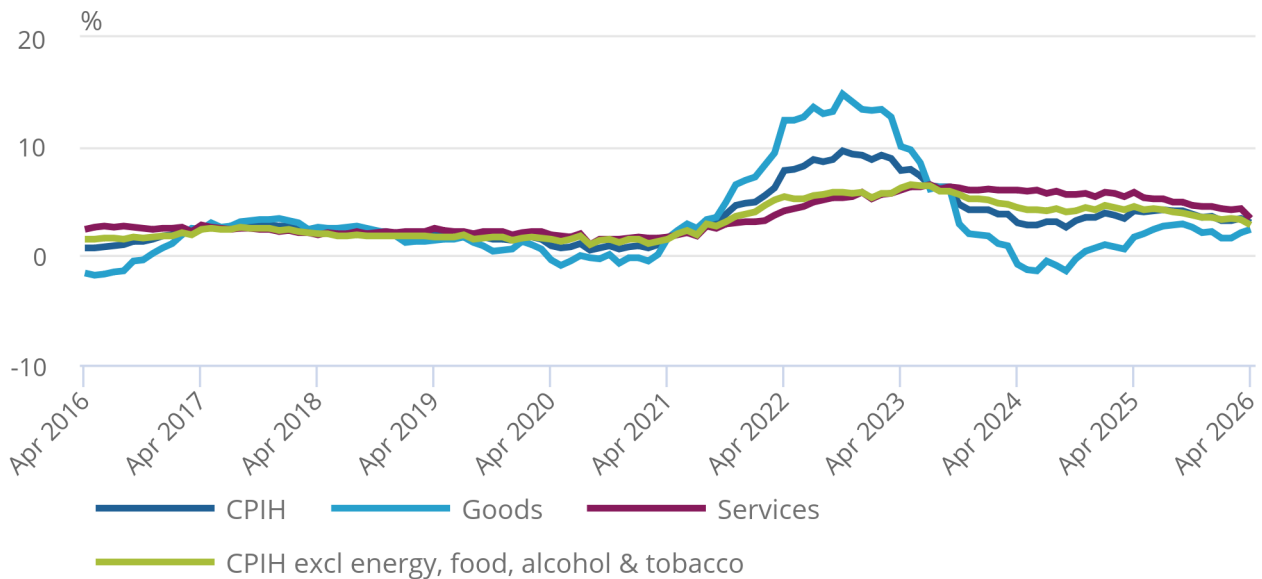
## 4 . Latest movements in CPIH inflation

Figure 5: Core CPIH annual inflation was last lower in September 2021

CPIH goods, services and core annual inflation rates, UK, April 2016 to April 2026

### Figure 5: Core CPIH annual inflation was last lower in September 2021

CPIH goods, services and core annual inflation rates, UK, April 2016 to April 2026



Source: Consumer price inflation from the Office for National Statistics

Figure 5 shows the 12-month inflation rates for the Consumer Prices Index including owner occupiers' housing costs (CPIH) series for all goods and all services, together with CPIH excluding energy, food, alcohol and tobacco (often referred to as core CPIH). The CPIH inflation rate is added for comparison.

The core CPIH annual inflation rate was 2.8% in April 2026, down from 3.3% in March. The rate was last lower in September 2021.

The CPIH all-goods index rose by 2.4% in the 12 months to April 2026, up from 2.1% in the 12 months to March. The largest upward contribution to the change in the annual rate came from energy (particularly motor fuels). The largest, partially offsetting, downward effect came from food, alcoholic beverages and tobacco, particularly processed food and non-alcoholic beverages.

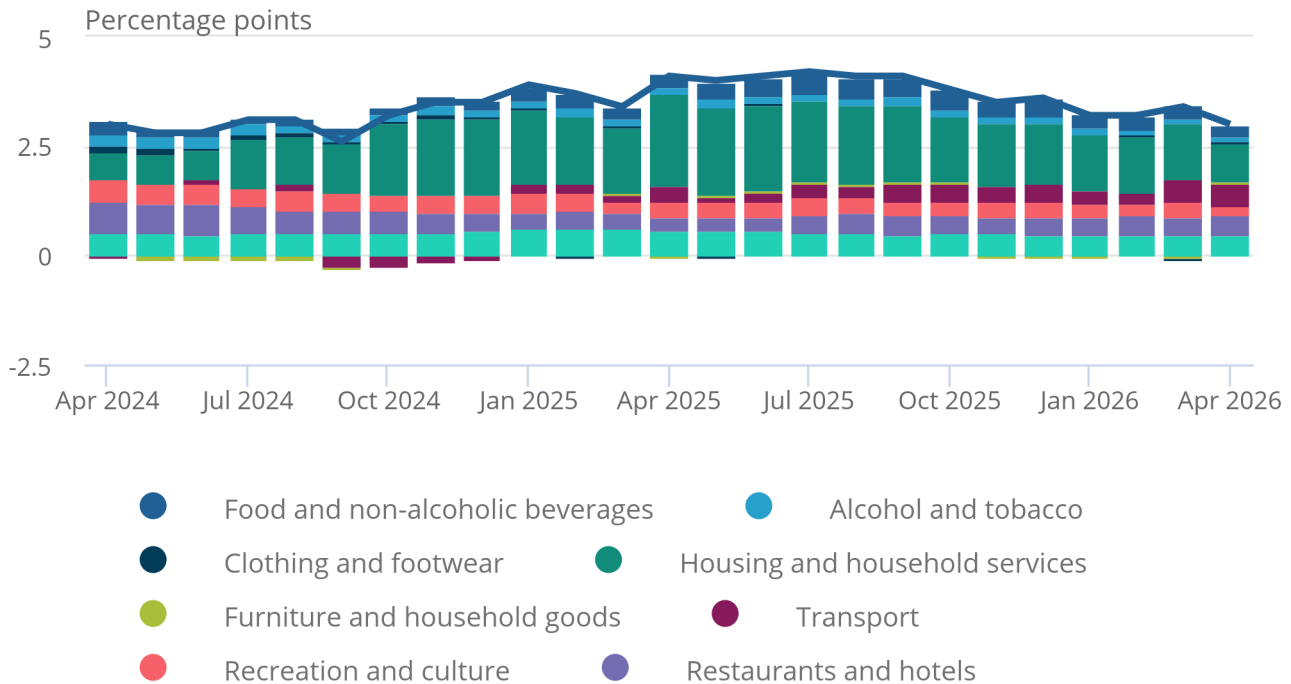
The CPIH all-services index rose by 3.4% in the 12 months to April 2026, down from 4.3% in the 12 months to March. The largest downward contribution to the change in the annual rate came from travel and transport services, particularly Vehicle Excise Duty. The largest, partially offsetting, upward effect came from communication.

**Figure 6: Housing and household services made the largest contribution to the CPIH annual inflation rate for the 22nd consecutive month**

Contributions to the CPIH annual inflation rate, UK, April 2024 to April 2026

Figure 6: Housing and household services made the largest contribution to the CPIH annual inflation rate for the 22nd consecutive month

Contributions to the CPIH annual inflation rate, UK, April 2024 to April 2026



Source: Consumer price inflation from the Office for National Statistics

Notes:

1. Individual contributions may not sum to the total because of rounding.
2. More information on the contents of each division can be found in Table 3 of our [Consumer price inflation dataset](#).

Figure 6 shows the extent to which the distinct categories of goods and services have contributed to the overall annual CPIH inflation rate over the last two years. The contribution of each category to the annual rate depends on the price movement in that category and its weight, which is updated annually.

The largest positive contribution to the CPIH annual inflation rate came from housing and household services. The division has made the largest contribution for the last 22 months, starting from July 2024. However, its contribution had eased for 10 consecutive months from April 2025, until it rose between February and March 2026, before declining again in April 2026.

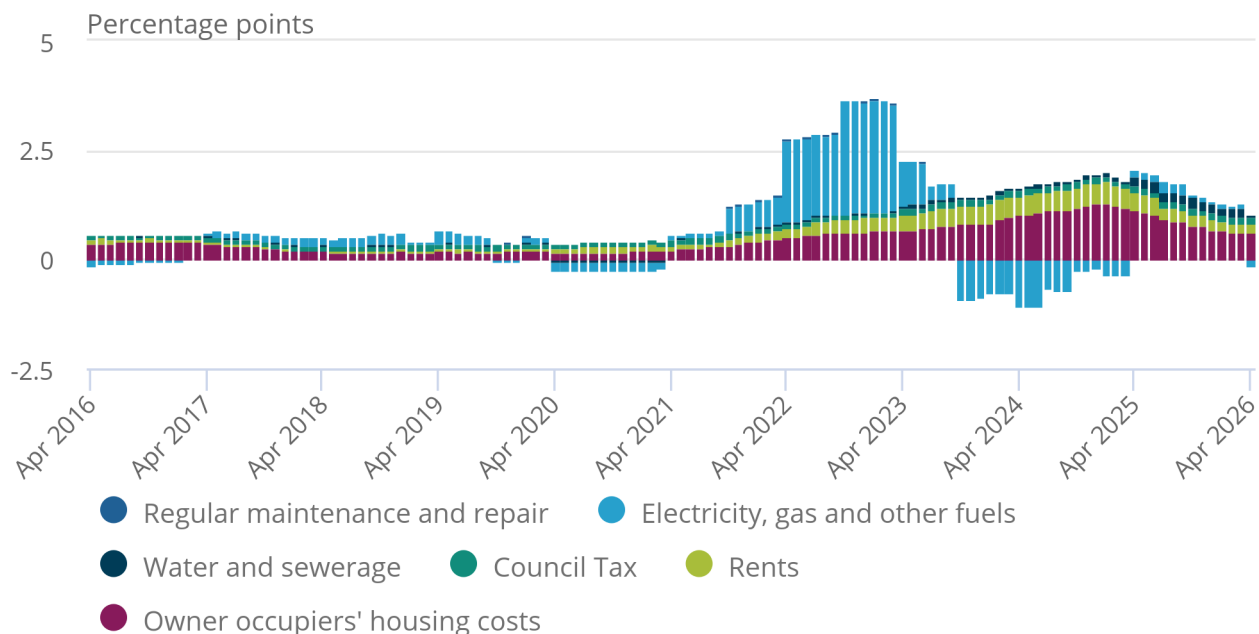
The contribution from food and non-alcoholic beverages was the lowest since December 2024. All divisions made a positive contribution, with the clothing and footwear, and furniture and household goods divisions changing from providing a negative contribution last month, to a positive contribution to the CPIH annual rate in April 2026.

## Figure 7: Annual contribution from owner occupiers' housing costs last lower in July 2022

Contributions of housing components to the CPIH annual inflation rate, UK, April 2016 to April 2026

### Figure 7: Annual contribution from owner occupiers' housing costs last lower in July 2022

Contributions of housing components to the CPIH annual inflation rate, UK, April 2016 to April 2026



Source: Consumer price inflation from the Office for National Statistics

#### Notes:

- Individual contributions may not sum to the total because of rounding.

Figure 7 shows the contributions from owner occupiers' housing (OOH) costs and Council Tax to the annual CPIH inflation rate in the context of wider housing-related costs. The Consumer Prices Index (CPI) differs from the CPIH because it does not include these two components.

The annual contribution from OOH costs continued to slow and was 0.61 percentage points in April 2026. This contribution was last lower in July 2022, when it was 0.60 percentage points. The contribution has decreased for 15 consecutive months from a recent high of 1.31 percentage points in January 2025.

The annual contribution from electricity, gas and other fuels fell from 0.13 percentage points in March 2026 to negative 0.15 percentage points in April. This was because of the change in the Ofgem price cap and lowering of the per-unit price of fixed tariffs.

## 5 . Latest movements in CPI inflation

While the Consumer Prices Index including owner occupiers' housing costs (CPIH) is our most comprehensive measure of consumer price inflation, the Consumer Prices Index (CPI) is based on a harmonised methodology developed by Eurostat. This enables international comparisons to be drawn. It is also used to set the operational inflation target for UK monetary policy, and to uprate working-age benefits and tax credits. More information on the use cases for our consumer price inflation statistics can be found in our [Measuring changing prices and costs for consumers and households: December 2023 article](#).

Figure 8 shows annual CPI inflation for the UK compared with the EU average and selected G7 countries. While the UK CPI is produced on a comparable basis with EU countries, the US Harmonised Index of Consumer Prices (HICP) differs in some respects. More information is available in Note 1 to Figure 8.

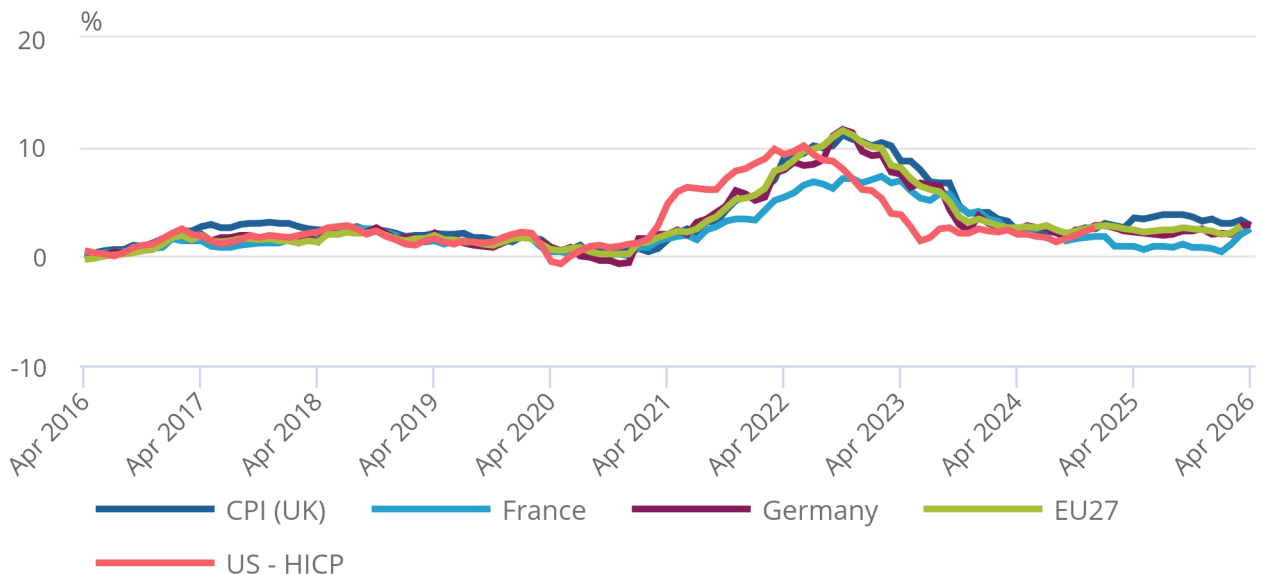
The UK's CPI inflation rate of 2.8% was lower than the first (or "flash") estimate of inflation for Germany (2.9%) but higher than that for France (2.5%) in April 2026. This is the first month since December 2024 that the UK's rate of inflation has been below that of Germany.

## Figure 8: UK inflation rate lower than Germany's for the first time since December 2024

CPI compared with selected G7 and EU annual inflation rates, April 2016 to April 2026

### Figure 8: UK inflation rate lower than Germany's for the first time since December 2024

CPI compared with selected G7 and EU annual inflation rates, April 2016 to April 2026



Source: Consumer price inflation from the Office for National Statistics, Eurostat, and the US Bureau of Labor Statistics

#### Notes:

1. There are some differences in the definition of the US Harmonised Index of Consumer Prices (HICP) that may limit comparison. More information is available on the [US Bureau of Labor Statistics R-HICP homepage](#). The latest available figure is for December 2024.
2. April 2026 data for France and Germany are flash estimates and are not final; the final HICP dataset, including the EU27 aggregate, for April 2026 is published on Wednesday 20 May.
3. The Euro area inflation estimates for April 2026 can be found in the [Eurostat Data Browser](#).
4. The international data in this figure are sometimes revised.

Table 3: CPI annual and monthly inflation rates by division  
UK, April 2025, March 2026, and April 2026

	CPI 12-month rate (%)		CPI 1-month rate (%)	
	March 2026	April 2026	April 2025	April 2026
<b>CPI All items</b>	3.3	2.8	1.2	0.7
<b>Food and non-alcoholic beverages</b>	3.7	3.0	0.7	0.0
<b>Alcohol and tobacco</b>	3.3	2.8	0.4	0.0
<b>Clothing and footwear</b>	-0.8	0.7	-1.1	0.4
<b>Housing and household services</b>	5.3	1.4	3.3	-0.4
<b>Furniture and household goods</b>	-0.4	0.5	-1.7	-0.8
<b>Health</b>	3.1	2.4	0.3	-0.3
<b>Transport</b>	4.7	4.5	3.8	3.6
<b>Communication</b>	4.1	4.5	4.3	4.7
<b>Recreation and culture</b>	2.8	1.7	1.2	0.2
<b>Education</b>	5.1	5.1	0.0	0.0
<b>Restaurants and hotels</b>	4.0	4.4	0.6	1.0
<b>Miscellaneous goods and services</b>	2.5	2.6	0.2	0.4
<b>All goods</b>	2.1	2.4	0.3	0.6
<b>All services</b>	4.5	3.2	2.2	0.9
<b>CPI exc food, energy, alcohol and tobacco (core CPI)</b>	3.1	2.5	1.4	0.7

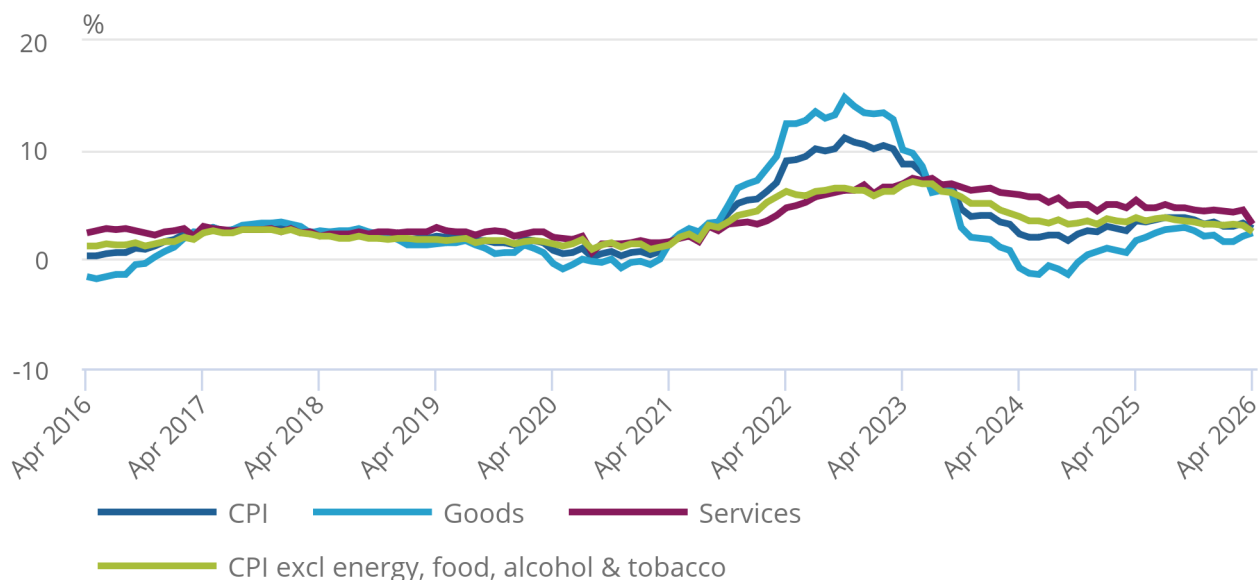
Source: Consumer price inflation from the Office for National Statistics

## Figure 9: Core CPI annual inflation was last lower in July 2021

CPI goods, services and core annual inflation rates, UK, April 2016 to April 2026

### Figure 9: Core CPI annual inflation was last lower in July 2021

CPI goods, services and core annual inflation rates, UK, April 2016 to April 2026



Source: Consumer price inflation from the Office for National Statistics

Figure 9 shows the 12-month inflation rates for the CPI all-goods and all-services series, together with CPI excluding energy, food, alcohol and tobacco (often referred to as core CPI). The headline CPI inflation rate is added for comparison.

The core CPI annual inflation rate was 2.5% in April 2026, down from 3.1% in March. The rate was last lower in July 2021.

The CPI all-goods index rose by 2.4% in the 12 months to April 2026, up from 2.1% in the 12 months to March.

The CPI all-services index rose by 3.2% in the 12 months to April 2026, down from 4.5% in the 12 months to March.

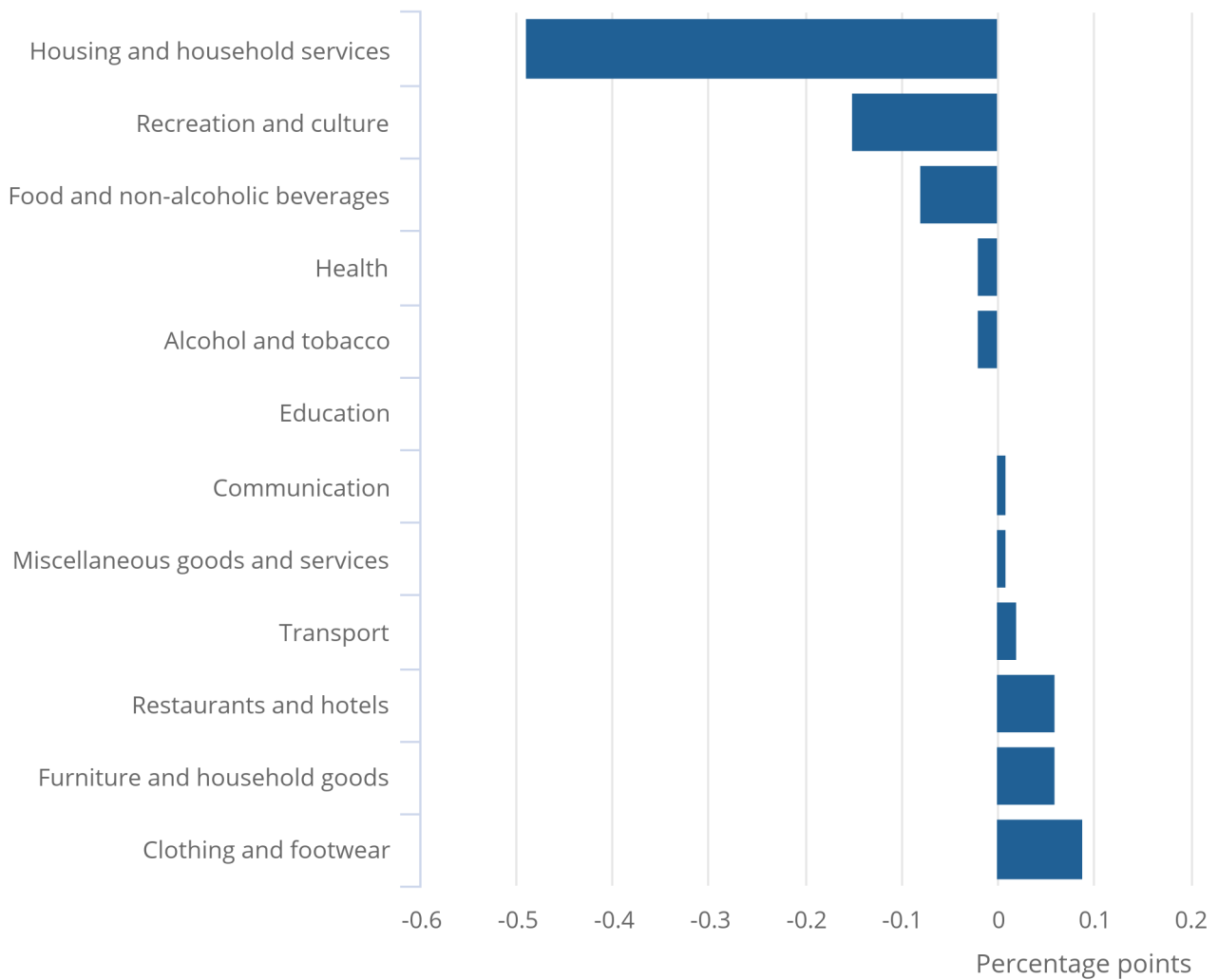
As with the all-items annual inflation rates, the drivers of CPIH and CPI goods and services inflation are the same (except for owner occupiers' housing (OOH) costs and Council Tax, which are excluded from CPI). The drivers are discussed in more detail in [Section 4: Latest movements in CPIH inflation](#).

**Figure 10: Housing and household services (principally electricity and gas) made the largest downward contribution to the change in CPI annual inflation**

Contributions to change in the CPI annual inflation rate, UK, between March and April 2026

Figure 10: Housing and household services (principally electricity and gas) made the largest downward contribution to the change in CPI annual inflation

Contributions to change in the CPI annual inflation rate, UK, between March and April 2026



Source: Consumer price inflation from the Office for National Statistics

Notes:

1. Individual contributions may not sum to the total because of rounding.
2. More information on the contents of each division can be found in Table 4 of our [Consumer price inflation dataset](#).

Figure 10 shows how each of the main groups of goods and services contributed to the change in the CPI annual inflation rate between March and April 2026.

The decrease in the rate into April 2026 reflected downward contributions from five divisions, partially offset by upward contributions from six divisions. The largest downward contribution came from housing and household services (particularly electricity and gas). This was partially offset by an upward contribution from clothing and footwear.

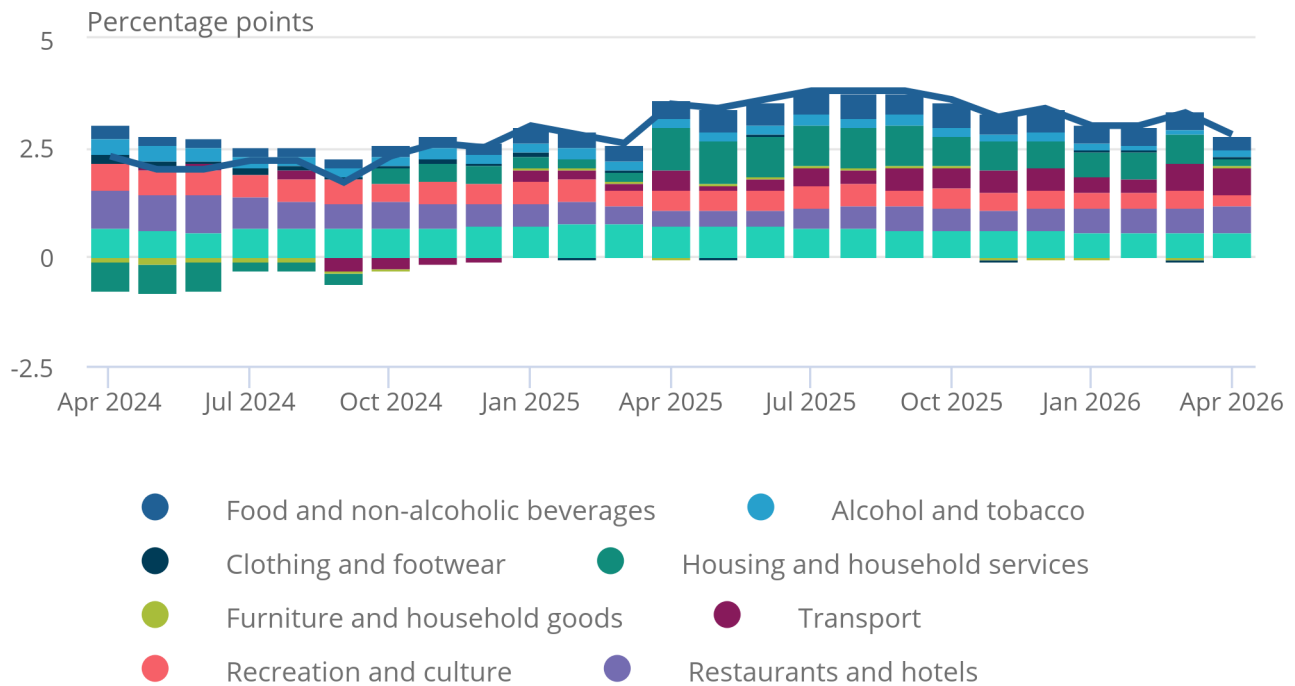
Though the sizes of the contributions differ from CPIH, the main drivers to the change are the same where they are common to both measures.

**Figure 11: Transport made the largest contribution to the CPI annual inflation rate for the first time since December 2022**

Contributions to the CPI annual inflation rate, UK, April 2024 to April 2026

Figure 11: Transport made the largest contribution to the CPI annual inflation rate for the first time since December 2022

Contributions to the CPI annual inflation rate, UK, April 2024 to April 2026



Source: Consumer price inflation from the Office for National Statistics

Notes:

1. More information on the contents of each division can be found in Table 4 of our [Consumer price inflation dataset](#).

Figure 11 shows the extent to which the distinct categories of goods and services have contributed to the overall annual CPI inflation rate over the last two years.

The CPIH includes extra housing components not included in the CPI. This can sometimes result in the largest contributions to the annual CPI and CPIH inflation rates coming from different divisions. In April 2026, the largest-contributing division to CPI was transport (0.65 percentage point contribution to the CPI rate) and the largest-contributing division to CPIH was housing and household services (0.91 percentage points to the CPIH rate). OOH costs had a large upward contribution to housing and household services in CPIH, but are excluded from CPI.

## 6 . Data on consumer price inflation

### [Consumer price inflation tables](#)

Dataset | Released 20 May 2026

Measures of monthly UK inflation data including the Consumer Prices Index including owner occupiers' housing costs (CPIH), Consumer Prices Index (CPI) and Retail Prices Index (RPI). These tables complement the consumer price inflation time series dataset.

### [Consumer price inflation time series](#)

Dataset MM23 | Released 20 May 2026

Comprehensive database of time series covering measures of inflation data for the UK including CPIH, CPI and RPI.

### [Consumer price inflation detailed briefing note](#)

Dataset | Released 20 May 2026

The consumer price inflation detailed briefing note contains details of the items contributing to the changes in the CPIH, details of any notable movements, a summary of the reconciliation of CPIH and RPI, and the outlook, which looks ahead to next month's release.

### [Consumer price inflation consumption segment indices and price quotes](#)

Dataset | Released 20 May 2026

Price quote data (for locally collected data only) and consumption segment indices (that underpin consumer price inflation statistics), giving users access to the detailed data that are used in the construction of the UK's inflation figures. From publication in March 2026, this dataset no longer includes price quote data for food and non-alcoholic beverages, and alcohol and tobacco. More information is included in [Section 8: Data sources and quality](#).

### [Contributions to the 12-month rate of CPI\(H\) by import intensity](#)

Dataset | Released 20 May 2026

A time series of the contributions to the CPIH and CPI annual rates broken down by the import intensity of household purchases.

### [Consumer price inflation, historical data, UK, 1950 to 1988](#)

Dataset | Released 18 May 2022

Data tables of historical estimates modelled for the CPIH and CPI over the period 1950 to 1988. Data in these tables are not accredited official statistics and are provided for indicative purposes only.

## 7 . Glossary

### Annual inflation rate

The most common approach to measuring inflation is the 12-month or annual inflation rate, which compares prices for the latest month with the same month a year ago. In any given month, the annual rate is determined by the balance between upward and downward price movements across the range of goods and services included in the index.

### Consumer price inflation

Consumer price inflation is the rate at which the prices of goods and services bought by households rise or fall. It is estimated by using price indices. For an overview of the range of indices available and their uses, please see our [Consumer price indices, a brief guide: 2026](#) and our [Measuring changing prices and costs for consumers and households: December 2023 article](#).

## CPIH

The Consumer Prices Index including owner occupiers' housing costs (CPIH) is the most comprehensive measure of inflation. It extends the Consumer Prices Index (CPI) to include a measure of the costs associated with owning, maintaining and living in one's own home, known as owner occupiers' housing (OOH) costs, along with Council Tax. Both are substantial expenses for many households and are not included in the CPI.

## CPI

The CPI is a measure of consumer price inflation produced to international standards, and is based on European regulations for the [Harmonised Index of Consumer Prices](#). The CPI is the inflation measure used in the government's target for inflation.

The CPI is produced at the same level of detail as the CPIH in our accompanying [Consumer price inflation dataset](#) and in our accompanying [Consumer price inflation time series](#).

## Owner occupiers' housing costs

OOH costs are the costs of housing services associated with owning, maintaining and living in one's own home.

## RPI

The Retail Prices Index (RPI) and its subcomponents do not meet the required standard for designation as [accredited official statistics](#). In recognition that the index continues to be widely used in contracts, we continue to publish the RPI, its subcomponents, and RPI excluding mortgage interest payments (RPIX). To view the all-items RPI, please see the [data time series section of the Inflation and price indices area of our website](#). The annual RPI inflation rate was 3.0% in April 2026.

The UK Statistics Authority (The Authority) and HM Treasury launched a consultation in 2020 on The Authority's proposal to address the shortcomings of the RPI. From 2030 (at the earliest), as outlined in [The Authority's response to the joint consultation on reforming the methodology of the Retail Prices Index](#), the CPIH methods and data sources will be introduced into the RPI. Additionally, the supplementary and lower-level indices of the RPI will be discontinued.

## 8 . Data sources and quality

## Introducing scanner data into consumer price inflation statistics

We introduced scanner data for approximately 50% of the grocery market with the February 2026 index, published on 25 March 2026. Instead of collecting 25,000 prices per month directly from shops by price collectors, we are now using approximately 300 million price points derived from sales of over a billion units of products per month, collected directly from supermarket scanners at the checkouts or online. For the remaining 50% of the groceries market, we continue to manually collect prices in-store and online.

For comparison, we produced the all-items headline rates for February 2026 without using scanner data. Based on locally collected grocery data, the Consumer Prices Index including owner occupiers' housing costs (CPIH) rose by 3.3% in the year to February 2026, and the Consumer Prices Index (CPI) rose by 3.1%. These were slightly above the official rates of 3.2% and 3.0%, respectively.

You can find more about this change and how it affects our headline measures of inflation in our [Impact analysis on transformation of UK consumer price statistics: January 2026 article](#).

We also published our [Overview of how we use scanner data in consumer price inflation statistics: January 2026](#) and our [How multilateral index methods help us understand grocery scanner data article](#), which support user understanding of how we use the data.

This change was incorporated into the CPI and CPIH February 2026 datasets, and will be introduced in the Household Costs Indices (HCIs), to be published on 28 May 2026. Following the [Bank of England response to the proposed changes to the Retail Prices Index \(RPI\) in 2026 \(143.6 kB PDF\)](#), required under the Statistics and Registration Service Act 2007, the change was also included in the RPI.

This followed some changes introduced with the February 2025 index in March 2025, as a necessary step towards incorporating scanner data into the consumer price indices. At that point, the process for aggregating the detailed information changed. Goods and services were allocated into "consumption segments" for different categories of expenditure.

In some cases, we defined these consumption segments to correspond to one "item" for which we track prices over time. However, in cases where more comprehensive source data were going to become available, a consumption segment was set up to include much more than just one item. There is more information on the use of consumption segments in our [Introducing alternative data into consumer price statistics: aggregation and weights article](#). For simplicity, we continue to refer to "items" in our statistical bulletin and detailed briefing note.

## Changes to published microdata

Despite the benefits of introducing scanner data into the consumer price indices, we can no longer publish the price quote data for food and non-alcoholic beverages, alcohol and tobacco (Divisions 1 and 2 of the CPIH and CPI), or the equivalent categories of RPI in our [Consumer price inflation consumption segment indices and price quotes dataset](#). This is because of our data-sharing agreements with retailers.

Instead, we have developed new aggregate output statistics to meet the needs of users. We are publishing regional consumption segment indices and weights, and counts of indicator marker codes (for example, sales and recoveries) that are manually collected as part of the traditional data collection. We first published these from March 2026, with the release of the February 2026 indices. Further outputs will be introduced in summer 2026. More information on the new outputs is available in our [Changes to the provision of microdata outputs for consumer price inflation statistics: January 2026 article](#).

## Households and the cost of living

To assist individuals in understanding how the rise in inflation affects their expenditure, we have produced a [personal inflation calculator](#). The calculator allows users to enter the amount they spend across either a reduced or a wide range of categories, to produce an estimate of their personal inflation based on those spending patterns.

Our [Shopping prices comparison tool](#) shows how the average prices of items have changed over time. Please note that the newly introduced consumption segments for food, drink and tobacco will not have data before 2025 in the tool. However, the historical average prices for food, drink and tobacco items, that were in the tool before the update in 2025, can be found in our [Shopping prices comparison tool data download before the 2025 update](#).

Please also note that Table 55 in our historical [Consumer price inflation dataset](#), which provided time series of prices for petrol and diesel, has not been published since 19 February 2025, and the two series have been discontinued. Historical average prices are still available from the time series explorer function on our website, using the four-character identifiers CZMK for petrol and CZML for diesel.

On 26 February 2026, we published our quarterly [Household Costs Indices \(HCIs\) for UK household groups bulletin](#). The HCIs reflect how different types of households experience changing prices, and differ from CPIH and CPI. The CPIH and CPI are based on recognised economic principles and provide an aggregate measure of inflation for household spending in the UK.

The HCIs are [official statistics in development](#) and this release included new estimates for October to December 2025. It was not possible for this latest release to update the weights for 2025 in line with the standard methodology for consumer prices. This is because of delays in processing the underlying survey data and the need for further, ongoing quality assurance. Instead, the most recent estimates have been compiled using the weights for February to December 2024. We will update the weights as soon as the data are available to use.

## Passenger transport by air

A monthly index for passenger transport by air is included in the monthly consumer price inflation dataset. From March 2025, we also began publishing a set of subindices and weights on an annual basis. [Domestic, European and long-haul airfares consumer prices sub-indices and weights](#) was updated on 25 March 2026 with data for March 2025 to February 2026, and a longer historical time series back to 2007. From March 2026, we have also started to release [quarterly and annual average air fares](#), again on an annual basis. The analyses are released in [the user requested data section of our website](#).

## Classification of Individual Consumption According to Purpose (COICOP)

The Classification of Individual Consumption According to Purpose (COICOP) is the classification that underpins some of the main statistics that we produce. To reflect changes in household expenditure patterns since its inception in the late 1990s, the [classification was updated in 2018 \(PDF, 1,286KB\)](#).

The UK currently uses the [version of COICOP introduced in 1999, which was updated in 2017](#) to add additional detail at the sub-class level. However, we plan to have implemented the updated COICOP 2018 by 2029, as referenced in [Section B4 of our Economic statistics plan](#) and [Section 5 of our Economic statistics progress report](#). We will also consider re-referencing the CPI as part of the move to the new classification and will provide users with full details of our plans, once finalised.

For further information, please email [cpi@ons.gov.uk](mailto:cpi@ons.gov.uk).

## Weights for 2026 consumer price inflation statistics

In line with usual practice at the start of each year, the expenditure weights used in compiling the CPIH and CPI were calculated using updated spending information. The first update of weights was implemented with the January indices. The second update was introduced, along with the usual basket update, with the February indices released in March. We published our [Consumer price inflation, updating weights: 2026 article](#) and our [Consumer price inflation basket of goods and services: 2026 article](#) on 16 March 2026.

The 2026 weights for CPIH and CPI were calculated using national accounts household final consumption expenditure (HHFCE) data for 2024. They reflect our most comprehensive and complete estimate of the latest household spending at the time of the weights update. This is in line with our standard methodology. More information is available in our [Consumer price inflation, updating weights articles](#).

The weights for the RPI were also updated and introduced with the February 2026 index.

## Consumer price inflation historical estimates, UK, 1950 to 1988

On 18 May 2022, we published our [Consumer price inflation, historical estimates, UK, 1950 to 1988 – methodology](#) and our [Consumer price inflation, historical estimates and recent trends, UK: 1950 to 2022 article](#). These include new estimates of CPIH and improved estimates of CPI for 1950 to 1988. These estimates (published in response to user need for a longer series) are indicative and are for analytical purposes only. They are not intended for official use and do not constitute part of the [accredited official statistics](#) series.

Previously, in December 2018, we published our [Consumer Prices Index including owner occupiers' housing costs \(CPIH\) historical series: 1988 to 2004 article](#). These series are also not classed as accredited official statistics, reflecting the historical uncertainty around the backcasts.

### Methodology information

The consumer price indices are based on prices collected manually from outlets around the country, information collected centrally over the internet and by phone, and, from February 2026, data collected from supermarket scanners at the checkouts or online. The traditionally sourced data used in this release were collected on or around 14 April 2026.

An overview of consumer price statistics is given in our [Consumer price indices, a brief guide: 2026](#). The concepts and methodologies underpinning the indices in more detail are covered in our [Consumer prices indices technical guidance](#).

Information on the users and uses of these statistics, and the characteristics of the different measures of inflation related to potential use, is included in our [Users and uses of consumer price inflation statistics: July 2018 update methodology](#).

### Strengths and limitations

In our [Measuring changing prices and costs for consumers and households article](#), we illustrated our approach to the process using three "use cases", and described how they relate to the measures published and under development.

The three cases refer firstly to the CPIH as our lead measure of inflation, based on economic principles. They also refer to the HCIs as a set of measures that reflect the change in costs and prices experienced by different households, and the RPI as a legacy measure that is required to meet existing user needs. The issues with the RPI are described in our [Shortcomings of the Retail Prices Index as a measure of inflation article](#).

### Accredited official statistics

These [accredited official statistics](#) were independently reviewed by the Office for Statistics Regulation in July 2017. They comply with the standards of trustworthiness, quality and value in the [Code of Practice for Statistics](#) and should be labelled "accredited official statistics".

### Revisions and correction of errors policies for consumer price inflation statistics

Our [Revisions and correction of errors policies for consumer price inflation statistics](#) are stated separately to highlight the differences between them. Within each policy, there is information on how the policy is applied, in what circumstances users will be notified and how users will be notified. This policy replaces our previous [Revisions policy for consumer price inflation statistics](#), published in March 2017.

## 9 . Related links

### [Producer price inflation, UK](#)

Bulletin | Released 20 May 2026

Changes in the prices of goods bought and sold by UK manufacturers, including price indices of materials and fuels purchased (input prices) and factory gate prices (output prices).

### [Private rent and house prices, UK](#)

Bulletin | Released 20 May 2026

The Price Index of Private Rents (PIPR) measures private rent inflation for new and existing tenancies. The UK House Price Index (HPI) measures house price inflation.

### [Shopping prices comparison tool](#)

Interactive | Released 20 May 2026

Search to see how the average prices of hundreds of shopping items are changing.

### [Consumer price inflation, updating weights: 2026](#)

Article | Released 16 March 2026

An overview of the latest annual update of Consumer Prices Index including owner occupiers' housing costs (CPIH) weights.

### [Household Costs Indices for UK household groups: October to December 2025](#)

Bulletin | Released 26 February 2026

Household Costs Indices, 12-month growth rates, expenditure shares and contributions for UK household groups and all households. These are official statistics in development.

### [UK Statistics Authority National Statistician's Advisory Panels on Consumer Price Statistics](#)

Web page | Updated when needed

Reports, papers and minutes of the two independent advisory panels on consumer price statistics: a technical panel to advise the National Statistician on technical aspects of the statistics, and a stakeholder panel to provide advice on the uses and applications of price indices.

## 10 . Cite this statistical bulletin

Office for National Statistics (ONS), released 20 May 2026, ONS website, statistical bulletin, [Consumer price inflation, UK: April 2026](#)

# A CPIH, CPI, RPI, RPIX, CPIY, CPI-CT & CPIHY: the latest three years

	Consumer prices index housing (CPIH) <sup>1</sup>		Consumer prices index (CPI) <sup>1</sup>		All items retail prices index (RPI) <sup>2</sup>		All items RPI excluding mortgage interest payments (RPIX) <sup>2</sup>	
	Index (2015=100)	Percentage change over 12 months	Index (2015=100)	Percentage change over 12 months	Index (Jan 13, 1987=100)	Percentage change over 12 months	Index (Jan 13, 1987=100)	Percentage change over 12 months
	L522	L550	D7BT	D7G7	CHAW	CZBH	CHMK	CDKQ
2023 Apr	128.3	7.8	130.4	8.7	372.8	11.4	371.4	10.4
May	129.1	7.9	131.3	8.7	375.3	11.3	373.9	10.3
Jun	129.4	7.3	131.5	7.9	376.4	10.7	374.6	9.6
Jul	129.0	6.4	130.9	6.8	374.2	9.0	371.9	7.9
Aug	129.4	6.3	131.3	6.7	376.6	9.1	373.7	7.8
Sep	130.1	6.3	132.0	6.7	378.4	8.9	375.3	7.6
Oct	130.2	4.7	132.0	4.6	377.8	6.1	374.2	4.8
Nov	130.0	4.2	131.7	3.9	377.3	5.3	373.5	4.1
Dec	130.5	4.2	132.2	4.0	379.0	5.2	375.1	4.0
2024 Jan	130.0	4.2	131.5	4.0	378.0	4.9	373.6	3.8
Feb	130.8	3.8	132.3	3.4	381.0	4.5	376.4	3.5
Mar	131.6	3.8	133.0	3.2	383.0	4.3	378.1	3.3
Apr	132.2	3.0	133.5	2.3	385.0	3.3	380.1	2.3
May	132.7	2.8	133.9	2.0	386.4	3.0	381.1	1.9
Jun	133.0	2.8	134.1	2.0	387.3	2.9	381.9	1.9
Jul	132.9	3.1	133.8	2.2	387.5	3.6	382.0	2.7
Aug	133.4	3.1	134.3	2.2	389.9	3.5	384.3	2.8
Sep	133.5	2.6	134.2	1.7	388.6	2.7	382.8	2.0
Oct	134.3	3.2	135.0	2.3	390.7	3.4	384.8	2.8
Nov	134.6	3.5	135.1	2.6	390.9	3.6	384.8	3.0
Dec	135.1	3.5	135.6	2.5	392.1	3.5	386.0	2.9
2025 Jan	135.1	3.9	135.4	3.0	391.7	3.6	385.5	3.2
Feb	135.6	3.7	136.0	2.8	394.0	3.4	387.7	3.0
Mar	136.1	3.4	136.5	2.6	395.3	3.2	388.8	2.8
Apr	137.7	4.1	138.2	3.5	402.2	4.5	395.9	4.2
May	138.0	4.0	138.4	3.4	402.9	4.3	396.6	4.1
Jun	138.4	4.1	138.9	3.6	404.5	4.4	398.2	4.3
Jul	138.5	4.2	139.0	3.8	406.2	4.8	399.8	4.7
Aug	138.9	4.1	139.3	3.8	407.7	4.6	401.4	4.4
Sep	138.9	4.1	139.3	3.8	406.1	4.5	399.6	4.4
Oct	139.5	3.8	139.8	3.6	407.4	4.3	400.9	4.2
Nov	139.4	3.5	139.5	3.2	405.6	3.8	399.0	3.7
Dec	139.9	3.6	140.1	3.4	408.5	4.2	401.9	4.1
2026 Jan	139.4	3.2	139.5	3.0	406.4	3.8	399.7	3.7
Feb	140.0	3.2	140.1	3.0	408.2	3.6	401.4	3.5
Mar	140.8	3.4	141.0	3.3	411.4	4.1	404.5	4.0
Apr	141.8	3.0	142.1	2.8	414.4	3.0	407.6	3.0

Source: Office for National Statistics



# CPIH, CPI, RPI, RPIX, CPIY, CPI-CT & CPIHY: the latest three years

continued

	All items excluding indirect taxes (CPIY) <sup>3</sup>		Constant taxes (CPI-CT) <sup>3</sup>		CPIH excluding indirect taxes (CPIHY) <sup>3</sup>	
	Index (2015=100)	Percentage change over 12 months	Index (2015=100)	Percentage change over 12 months	Index (2015=100)	Percentage change over 12 months
	EL2Q	EL2S	EAC7	EAD6	L5IU	L5IV
2018 Dec	106.8	2.1	106.7	2.0	106.7	1.8
2019 Jan	105.9	1.8	105.8	1.7	106.0	1.6
Feb	106.4	1.8	106.3	1.7	106.4	1.6
Mar	106.6	1.8	106.5	1.8	106.6	1.7
Apr	107.3	2.2	107.1	2.0	107.2	1.9
May	107.6	2.0	107.4	1.9	107.4	1.9
Jun	107.6	2.0	107.4	1.9	107.5	1.8
Jul	107.7	2.1	107.4	2.0	107.5	1.9
Aug	108.1	1.7	107.9	1.6	107.9	1.6
Sep	108.2	1.7	108.0	1.6	108.0	1.6
Oct	108.0	1.4	107.8	1.4	107.8	1.4
Nov	108.2	1.5	108.0	1.4	108.1	1.4
Dec	108.2	1.3	108.0	1.3	108.1	1.3
2020 Jan	107.9	1.8	107.7	1.7	107.8	1.7
Feb	108.3	1.8	108.1	1.7	108.2	1.7
Mar	108.3	1.5	108.1	1.4	108.2	1.5
Apr	108.1	0.7	107.8	0.7	108.0	0.8
May	108.1	0.4	107.8	0.4	108.0	0.5
Jun	108.2	0.5	108.0	0.5	108.2	0.7
Jul	108.7	1.0	108.5	1.0	108.6	1.0
Aug	110.1	1.8	109.8	1.8	109.7	1.7
Sep	110.5	2.2	110.3	2.2	110.1	2.0
Oct	110.5	2.3	110.3	2.4	110.1	2.1
Nov	110.3	1.9	110.2	2.0	110.0	1.8
Dec	110.6	2.2	110.4	2.2	110.3	2.0
2021 Jan	110.3	2.3	110.2	2.3	110.1	2.1
Feb	110.5	2.0	110.3	2.0	110.3	1.9
Mar	110.8	2.3	110.6	2.4	110.6	2.2
Apr	111.5	3.2	111.3	3.2	111.2	2.9
May	112.2	3.8	112.0	3.8	111.7	3.4
Jun	112.8	4.2	112.5	4.2	112.2	3.8
Jul	112.8	3.7	112.5	3.8	112.3	3.4
Aug	113.6	3.2	113.3	3.2	113.0	2.9
Sep	113.9	3.1	113.7	3.0	113.3	2.8
Oct	114.6	3.8	114.4	3.7	113.9	3.4
Nov	115.4	4.6	115.1	4.5	114.5	4.1
Dec	116.0	4.9	115.7	4.8	115.2	4.4

Key: - zero or negligible

1 From the release of January consumer price inflation data on 16 February 2016, CPIH and CPI indices have been re-referenced and published with 2015=100. Full historic series for each of the re-referenced indices are available for users to view or download. Regular re-referencing of indices is methodological good practice as it avoids rounding issues that can arise from small index values. Please note that re-referencing does not impact on published inflation rates, although when using the indices to calculate inflation rates, it is important to use indices that are referenced on the same year. Re-referencing does not impact on RPI. For more information, please contact [cpi@ons.gsi.gov.uk](mailto:cpi@ons.gsi.gov.uk).

2 The Retail Prices Index and its derivatives do not meet the required standards for designation as National Statistics. A full report can be found at <http://www.statisticsauthority.gov.uk/>.

3 The series CPIY, CPI-CT and CPIHY were discontinued in January 2022, with the final estimates referring to price change in the period December 2021.

	Percentage change over				Percentage change over		
	Index (2015 =100)	1 mth	12 mths		Index (2015 =100)	1 mth	12 mths
<b>CPI (overall index)</b>	142.1	0.7	2.8				
01 Food and non-alcoholic beverages	144.5	-	3.0	<b>06.2 Out-patient services</b>	143.2	0.7	4.4
02 Alcoholic beverages and tobacco	159.9	-	2.8	06.2.1/3 Medical services & paramedical services	132.1	0.5	3.4
03 Clothing and footwear	119.8	0.4	0.7	06.2.2 Dental services	157.6	0.9	5.4
04 Housing, water, electricity, gas and other fuels	149.8	-0.4	1.4	<b>06.3 Hospital services</b>	166.1	-1.2	1.3
05 Furniture, household equipment and maintenance	125.4	-0.8	0.5	<b>07.1 Purchase of vehicles</b>	125.4	0.1	0.2
06 Health	142.4	-0.3	2.4	07.1.1A New cars	140.7	-	0.8
07 Transport	145.8	3.6	4.5	07.1.1B Second-hand cars	112.3	0.1	-0.4
08 Communication	149.0	4.7	4.5	07.1.2/3 Motorcycles and bicycles	123.2	0.8	2.0
09 Recreation and culture	135.7	0.2	1.7	<b>07.2 Operation of personal transport equipment</b>	156.9	7.0	10.5
10 Education	152.7	-	5.1	07.2.1 Spare parts and accessories	142.9	0.3	4.5
11 Restaurants and hotels	154.6	1.0	4.4	07.2.2 Fuels and lubricants	150.7	14.8	23.0
12 Miscellaneous goods and services	125.9	0.4	2.6	07.2.3 Maintenance and repairs	160.4	0.7	8.3
<b>All goods</b>	135.8	0.6	2.4	07.2.4 Other services	180.5	3.1	-3.4
<b>All services</b>	147.4	0.9	3.2	<b>07.3 Transport services</b>	154.3	0.8	-2.4
<b>01.1 Food</b>	143.6	-	2.9	07.3.1 Passenger transport by railway	147.0	1.3	0.7
01.1.1 Bread and cereals	142.7	0.9	0.9	07.3.2 Passenger transport by road	171.7	1.3	3.0
01.1.2 Meat	136.1	-0.1	3.6	07.3.3 Passenger transport by air	149.0	-3.3	-13.2
01.1.3 Fish	138.1	1.9	5.7	07.3.4 Passenger transport by sea and inland waterway	171.7	8.6	-2.9
01.1.4 Milk, cheese and eggs	146.4	-	2.0	<b>08.1 Postal services</b>	180.9	3.5	3.1
01.1.5 Oils and fats	184.2	-2.3	-4.7	<b>08.2/3 Telephone and telefax equipment and services</b>	147.5	4.7	4.5
01.1.6 Fruit	140.8	-0.7	3.1	<b>09.1 Audio-visual equipment and related products</b>	95.8	2.8	0.1
01.1.7 Vegetables including potatoes and tubers	140.7	0.1	3.3	09.1.1 Reception and reproduction of sound and pictures	75.6	-1.0	-6.7
01.1.8 Sugar, jam, syrups, chocolate and confectionery	153.3	-0.8	6.1	09.1.2 Photographic, cinematographic and optical equipment	81.3	5.7	-0.7
01.1.9 Food products (nec)	156.8	0.1	4.1	09.1.3 Data processing equipment	74.5	5.2	-1.7
<b>01.2 Non-alcoholic beverages</b>	151.3	0.2	3.8	09.1.4 Recording media	160.3	1.0	4.7
01.2.1 Coffee, tea and cocoa	147.2	-0.2	5.1	09.1.5 Repair of audio-visual equipment & related products	107.7	-	1.4
01.2.2 Mineral waters, soft drinks and juices	152.1	0.3	3.4	<b>09.2 Oth. major durables for recreation &amp; culture</b>	130.4	-0.5	-1.6
<b>02.1 Alcoholic beverages</b>	122.5	-0.3	-0.4	09.2.1/2 Major durables for in/outdoor recreation	130.4	-0.5	-1.6
02.1.1 Spirits	118.2	-0.8	-2.4	<b>09.3 Other recreational items, gardens and pets</b>	124.4	-0.6	1.0
02.1.2 Wine	119.8	-0.1	0.5	09.3.1 Games, toys and hobbies	104.7	-3.2	-1.4
02.1.3 Beer	133.1	-0.3	0.2	09.3.2 Equipment for sport and open-air recreation	118.4	-0.5	-2.4
<b>02.2 Tobacco</b>	202.6	0.4	6.7	09.3.3 Gardens, plants and flowers	127.2	-0.3	-0.6
<b>03.1 Clothing</b>	123.4	0.5	1.1	09.3.4/5 Pets, related products and services	151.1	0.8	5.4
03.1.2 Garments	123.8	0.5	1.3	<b>09.4 Recreational and cultural services</b>	148.3	1.4	4.2
03.1.3 Other clothing and clothing accessories	116.1	-0.1	0.1	09.4.1 Recreational and sporting services	150.9	1.5	3.9
03.1.4 Cleaning, repair and hire of clothing	161.0	0.5	5.6	09.4.2 Cultural services	147.5	1.4	4.3
<b>03.2 Footwear including repairs</b>	101.1	0.4	-1.4	<b>09.5 Books, newspapers and stationery</b>	159.4	0.2	1.7
<b>04.1 Actual rentals for housing</b>	136.3	0.7	3.5	09.5.1 Books	147.0	-1.7	-2.3
<b>04.3 Regular maintenance and repair of the dwelling</b>	118.6	0.5	1.8	09.5.2 Newspapers and periodicals	218.2	2.1	8.0
04.3.1 Materials for maintenance and repair	133.6	1.3	3.5	09.5.3/4 Misc. printed matter, stationery, drawing materials	135.8	0.3	0.4
04.3.2 Services for maintenance and repair	111.0	-	0.8	<b>09.6 Package holidays</b>	158.5	-1.3	1.0
<b>04.4 Water supply and misc. services for the dwelling</b>	176.5	7.3	7.3	<b>10.0 Education</b>	152.7	-	5.1
04.4.1 Water supply	180.5	9.0	9.0	<b>11.1 Catering services</b>	154.0	0.5	4.6
04.4.3 Sewerage collection	173.4	5.8	5.8	11.1.1 Restaurants & cafes	155.6	0.5	4.5
<b>04.5 Electricity, gas and other fuels</b>	170.1	-6.3	-5.7	11.1.2 Canteens	116.2	-0.1	9.1
04.5.1 Electricity	184.9	-8.4	-6.0	<b>11.2 Accommodation services</b>	157.6	2.7	3.8
04.5.2 Gas	137.1	-4.4	-13.5	<b>12.1 Personal care</b>	126.9	0.7	1.9
04.5.3 Liquid fuels	324.9	8.5	129.6	12.1.1 Hairdressing and personal grooming establishments	149.2	1.2	4.1
04.5.4 Solid fuels	154.9	2.3	1.4	12.1.2/3 Appliances and products for personal care	120.1	0.6	1.3
<b>05.1 Furniture, furnishings and carpets</b>	137.8	-0.8	1.3	<b>12.3 Personal effects (nec)</b>	126.8	-0.3	7.2
05.1.1 Furniture and furnishings	137.2	-1.1	0.8	12.3.1 Jewellery, clocks and watches	138.8	-0.3	9.8
05.1.2 Carpets and other floor coverings	140.4	0.5	2.7	12.3.2 Other personal effects	103.1	-0.1	0.8
<b>05.2 Household textiles</b>	114.4	0.1	0.8	<b>12.4 Social protection</b>	152.0	0.5	4.5
<b>05.3 Household appliances, fitting and repairs</b>	118.6	-1.3	0.7	<b>12.5 Insurance</b>	168.6	-0.4	1.0
05.3.1/2 Major appliances and small electric goods	118.7	-1.3	0.7	12.5.2 House contents insurance	115.6	-0.5	-13.5
05.3.3 Repair of household appliances	124.2	0.3	1.4	12.5.3 Health insurance	173.3	-1.2	1.2
<b>05.4 Glassware, tableware and household utensils</b>	110.0	1.4	0.8	12.5.4 Transport insurance	182.4	1.0	5.6
<b>05.5 Tools and equipment for house and garden</b>	116.8	-2.1	-0.5	<b>12.6 Financial services (nec)</b>	90.6	-0.1	-1.5
<b>05.6 Goods and services for routine maintenance</b>	132.3	-1.0	-0.4	12.6.2 Other financial services (nec)	90.6	-0.1	-1.5
05.6.1 Non-durable household goods	114.8	-1.8	-2.6	<b>12.7 Other services (nec)</b>	111.8	0.9	3.2
05.6.2 Domestic services and household services	143.1	0.2	3.3				
<b>06.1 Medical products, appliances and equipment</b>	132.8	-0.4	1.9				
06.1.1 Pharmaceutical products	139.6	-0.8	1.7				
06.1.2/3 Other medical and therapeutic equipment	121.8	0.4	2.2				

1 As a direct result of the reduced availability of products due to the coronavirus (COVID-19) pandemic, some series are based on less than half of the number of quotes used in February 2020 (the most recent 'normal' collection). To identify which series are affected please consult

the latest Consumer price inflation tables found here: <https://www.ons.gov.uk/economy/inflationandpriceindices/datasets/consumerpriceinflation>, which includes notation to reflect the reduced coverage

Source: Office for National Statistics

	Percentage change over				Percentage change over		
	Index (2015 =100)	1 mth	12 mths		Index (2015 =100)	1 mth	12 mths
<b>CPIH (overall index)</b>	141.8	0.8	3.0				
01 Food and non-alcoholic beverages	144.9	-	3.0	06.1.1 Pharmaceutical products	139.6	-0.8	1.7
02 Alcoholic beverages and tobacco	159.9	-	2.8	06.1.2/3 Other medical and therapeutic equipment	121.8	0.4	2.2
03 Clothing and footwear	119.9	0.4	0.7	<b>06.2 Out-patient services</b>	142.6	0.7	4.4
04 Housing, water, electricity, gas and other fuels (including OOH)	144.3	0.4	3.0	06.2.1/3 Medical services & paramedical services	132.1	0.5	3.4
05 Furniture, household equipment and maintenance	125.7	-0.8	0.5	06.2.2 Dental services	157.6	0.9	5.4
06 Health	142.7	-0.3	2.4	<b>06.3 Hospital services</b>	166.1	-1.2	1.3
07 Transport	145.7	3.6	4.5	<b>07.1 Purchase of vehicles</b>	124.6	0.1	0.2
08 Communication	149.1	4.7	4.5	07.1.1A New cars	140.7	-	0.8
09 Recreation and culture	136.1	0.2	1.7	07.1.1B Second-hand cars	112.3	0.1	-0.4
10 Education	152.7	-	5.1	07.1.2/3 Motorcycles and bicycles	123.2	0.8	2.0
11 Restaurants and hotels	154.7	1.0	4.4	<b>07.2 Operation of personal transport equipment</b>	156.5	7.0	10.5
12 Miscellaneous goods and services	125.8	0.4	2.6	07.2.1 Spare parts and accessories	142.9	0.3	4.5
<b>All goods</b>	135.9	0.6	2.4	07.2.2 Fuels and lubricants	150.7	14.8	23.0
<b>All services</b>	145.1	0.9	3.4	07.2.3 Maintenance and repairs	160.4	0.7	8.3
<b>01.1 Food</b>	144.1	-	2.9	07.2.4 Other services	180.5	3.1	-3.4
01.1.1 Bread and cereals	142.7	0.9	0.9	<b>07.3 Transport services</b>	159.3	0.8	-2.4
01.1.2 Meat	136.1	-0.1	3.6	07.3.1 Passenger transport by railway	147.0	1.3	0.7
01.1.3 Fish	138.1	1.9	5.7	07.3.2 Passenger transport by road	171.7	1.3	3.0
01.1.4 Milk, cheese and eggs	146.4	-	2.0	07.3.3 Passenger transport by air	149.0	-3.3	-13.2
01.1.5 Oils and fats	184.2	-2.3	-4.7	07.3.4 Passenger transport by sea and inland waterway	171.7	8.6	-2.9
01.1.6 Fruit	140.8	-0.7	3.1	<b>08.1 Postal services</b>	180.9	3.5	3.1
01.1.7 Vegetables including potatoes and tubers	140.7	0.1	3.3	<b>08.2/3 Telephone and telefax equipment and services</b>	147.5	4.7	4.5
01.1.8 Sugar, jam, syrups, chocolate and confectionery	153.3	-0.8	6.1	<b>09.1 Audio-visual equipment and related products</b>	97.6	2.8	0.1
01.1.9 Food products (nec)	156.8	0.1	4.1	09.1.1 Reception and reproduction of sound and pictures	75.6	-1.0	-6.7
<b>01.2 Non-alcoholic beverages</b>	150.5	0.2	3.8	09.1.2 Photographic, cinematographic and optical equipment	81.3	5.7	-0.7
01.2.1 Coffee, tea and cocoa	147.2	-0.2	5.1	09.1.3 Data processing equipment	74.5	5.2	-1.7
01.2.2 Mineral waters, soft drinks and juices	152.1	0.3	3.4	09.1.4 Recording media	160.3	1.0	4.7
<b>02.1 Alcoholic beverages</b>	122.7	-0.3	-0.4	09.1.5 Repair of audio-visual equipment & related products	107.7	-	1.4
02.1.1 Spirits	118.2	-0.8	-2.4	<b>09.2 Oth. major durables for recreation &amp; culture</b>	130.4	-0.5	-1.6
02.1.2 Wine	119.8	-0.1	0.5	09.2.1/2 Major durables for in/outdoor recreation	130.4	-0.5	-1.6
02.1.3 Beer	133.1	-0.3	0.2	<b>09.3 Other recreational items, gardens and pets</b>	124.7	-0.6	1.0
<b>02.2 Tobacco</b>	202.6	0.4	6.7	09.3.1 Games, toys and hobbies	104.7	-3.2	-1.4
<b>03.1 Clothing</b>	123.7	0.5	1.1	09.3.2 Equipment for sport and open-air recreation	118.4	-0.5	-2.4
03.1.2 Garments	123.8	0.5	1.3	09.3.3 Gardens, plants and flowers	127.2	-0.3	-0.6
03.1.3 Other clothing and clothing accessories	116.1	-0.1	0.1	09.3.4/5 Pets, related products and services	151.1	0.8	5.4
03.1.4 Cleaning, repair and hire of clothing	161.0	0.5	5.6	<b>09.4 Recreational and cultural services</b>	148.3	1.4	4.2
<b>03.2 Footwear including repairs</b>	101.1	0.4	-1.4	09.4.1 Recreational and sporting services	150.9	1.5	3.9
<b>04.1 Actual rentals for housing</b>	136.3	0.7	3.5	09.4.2 Cultural services	147.5	1.4	4.3
<b>04.2 Owner occupiers' housing costs</b>	137.9	0.2	3.6	<b>09.5 Books, newspapers and stationery</b>	159.1	0.2	1.7
<b>04.3 Regular maintenance and repair of the dwelling</b>	122.3	0.5	1.8	09.5.1 Books	147.0	-1.7	-2.3
04.3.1 Materials for maintenance and repair	133.6	1.3	3.5	09.5.2 Newspapers and periodicals	218.2	2.1	8.0
04.3.2 Services for maintenance and repair	111.0	-	0.8	09.5.3/4 Misc. printed matter, stationery, drawing materials	135.8	0.3	0.4
<b>04.4 Water supply and misc. services for the dwelling</b>	176.5	7.3	7.3	<b>09.6 Package holidays</b>	158.5	-1.3	1.0
04.4.1 Water supply	180.5	9.0	9.0	<b>10.0 Education</b>	152.7	-	5.1
04.4.3 Sewerage collection	173.4	5.8	5.8	<b>11.1 Catering services</b>	154.2	0.5	4.6
<b>04.5 Electricity, gas and other fuels</b>	169.7	-6.3	-5.7	11.1.1 Restaurants & cafes	155.6	0.5	4.5
04.5.1 Electricity	184.9	-8.4	-6.0	11.1.2 Canteens	116.2	-0.1	9.1
04.5.2 Gas	137.1	-4.4	-13.5	<b>11.2 Accommodation services</b>	157.6	2.7	3.8
04.5.3 Liquid fuels	324.9	8.5	129.6	<b>12.1 Personal care</b>	126.8	0.7	1.9
04.5.4 Solid fuels	154.9	2.3	1.4	12.1.1 Hairdressing and personal grooming establishments	149.2	1.2	4.1
<b>04.9 Council tax and rates</b>	160.4	5.1	5.1	12.1.2/3 Appliances and products for personal care	120.1	0.6	1.3
<b>05.1 Furniture, furnishings and carpets</b>	137.6	-0.8	1.3	<b>12.3 Personal effects (nec)</b>	127.5	-0.3	7.2
05.1.1 Furniture and furnishings	137.2	-1.1	0.8	12.3.1 Jewellery, clocks and watches	138.8	-0.3	9.8
05.1.2 Carpets and other floor coverings	140.4	0.5	2.7	12.3.2 Other personal effects	103.1	-0.1	0.8
<b>05.2 Household textiles</b>	114.4	0.1	0.8	<b>12.4 Social protection</b>	152.0	0.5	4.5
<b>05.3 Household appliances, fitting and repairs</b>	118.4	-1.3	0.7	<b>12.5 Insurance</b>	175.7	-0.4	1.0
05.3.1/2 Major appliances and small electric goods	118.7	-1.3	0.7	12.5.2 House contents insurance	115.6	-0.5	-13.5
05.3.3 Repair of household appliances	124.2	0.3	1.4	12.5.3 Health insurance	173.3	-1.2	1.2
<b>05.4 Glassware, tableware and household utensils</b>	110.0	1.4	0.8	12.5.4 Transport insurance	182.4	1.0	5.6
<b>05.5 Tools and equipment for house and garden</b>	116.8	-2.1	-0.5	<b>12.6 Financial services (nec)</b>	90.6	-0.1	-1.5
<b>05.6 Goods and services for routine maintenance</b>	132.5	-1.0	-0.4	12.6.2 Other financial services (nec)	90.6	-0.1	-1.5
05.6.1 Non-durable household goods	114.8	-1.8	-2.6	<b>12.7 Other services (nec)</b>	111.8	0.9	3.2
05.6.2 Domestic services and household services	143.1	0.2	3.3				
<b>06.1 Medical products, appliances and equipment</b>	132.9	-0.4	1.9				

<sup>1</sup> As a direct result of the reduced availability of products due to the coronavirus (COVID-19) pandemic, some series are based on less than half of the number of price quotes used in February 2020

(the most recent 'normal' collection). To identify which series are affected, consult the latest Consumer price inflation tables found here: <https://www.ons.gov.uk/economy/inflationandpriceindices/datasets/consumer-priceinflation>, which includes notation to reflect the reduced coverage

# CPI: Detailed figures by divisions, groups and classes <sup>1</sup>

	Weights	Index (2015=100)		Percentage change over 1 month		Percentage change over 12 months									
		2026	2025 Apr	2026 Apr	2025 Apr	2026 Apr	2025 Aug	2025 Sep	2025 Oct	2025 Nov	2025 Dec	2026 Jan	2026 Feb	2026 Mar	2026 Apr
<b>CPI (Overall Index)</b>	1 000	138.2	142.1	1.2	0.7	3.8	3.8	3.6	3.2	3.4	3.0	3.0	3.3	2.8	
01 Food and non-alcoholic beverages	109.6059	140.2	144.5	0.7	-	5.1	4.5	4.9	4.2	4.5	3.6	3.3	3.7	3.0	
02 Alcoholic beverages and tobacco	37.1650	155.5	159.9	0.4	-	5.9	5.8	5.9	4.0	5.2	4.6	3.6	3.3	2.8	
03 Clothing and footwear	56.7210	118.9	119.8	-1.1	0.4	0.2	0.5	0.3	-0.6	-	-	0.9	-0.8	0.7	
04 Housing, water, electricity, gas and other fuels	131.2512	147.7	149.8	3.3	-0.4	7.4	7.3	5.2	5.1	4.9	4.5	4.6	5.3	1.4	
05 Furniture, household equipment and maintenance	53.8332	124.7	125.4	-1.7	-0.8	0.8	0.4	0.3	-0.3	-0.6	-0.5	0.1	-0.4	0.5	
06 Health	26.1791	139.0	142.4	0.3	-0.3	3.4	3.5	2.7	2.6	2.1	3.1	3.1	3.1	2.4	
07 Transport	140.9674	139.5	145.8	3.8	3.6	2.4	3.8	3.8	3.7	4.0	2.7	2.4	4.7	4.5	
08 Communication	24.3655	142.6	149.0	4.3	4.7	6.1	4.7	4.3	4.8	4.2	4.6	4.3	4.1	4.5	
09 Recreation and culture	152.1489	133.4	135.7	1.2	0.2	3.2	2.7	2.9	2.9	2.7	2.6	2.5	2.8	1.7	
10 Education	34.2466	145.3	152.7	-	-	7.5	7.2	7.6	7.6	7.6	5.1	5.1	5.1	5.1	
11 Restaurants and hotels	138.6276	148.0	154.6	0.6	1.0	3.8	3.9	3.8	3.5	3.8	4.1	4.0	4.0	4.4	
12 Miscellaneous goods and services	94.8886	122.7	125.9	0.2	0.4	2.3	2.0	2.3	2.1	2.2	2.2	2.6	2.5	2.6	
<b>All goods</b>	481.6334	132.5	135.8	0.3	0.6	2.8	2.9	2.6	2.1	2.2	1.6	1.6	2.1	2.4	
<b>All services</b>	518.3666	142.9	147.4	2.2	0.9	4.7	4.7	4.5	4.4	4.5	4.4	4.3	4.5	3.2	
<b>All items CPI excluding Energy, food, alcoholic beverages and tobacco</b>	794.8781	134.9	138.2	1.4	0.7	3.6	3.5	3.4	3.2	3.2	3.1	3.2	3.1	2.5	
<b>01.1 Food</b>	97.2974	139.5	143.6	0.6	-	4.8	4.3	4.8	4.0	4.4	3.5	3.2	3.5	2.9	
01.1.1 Bread and cereals	17.9672	141.4	142.7	0.6	0.9	3.9	3.1	4.3	2.0	4.0	1.5	1.6	0.6	0.9	
01.1.2 Meat	19.1095	131.3	136.1	2.0	-0.1	6.2	6.2	6.6	6.5	6.9	5.2	5.1	5.8	3.6	
01.1.3 Fish	3.7160	130.7	138.1	0.7	1.9	0.5	-1.6	0.4	-0.3	1.1	1.2	2.0	4.5	5.7	
01.1.4 Milk, cheese and eggs	11.8173	143.5	146.4	-0.6	-	4.2	3.6	3.7	2.5	2.5	1.3	2.1	1.3	2.0	
01.1.5 Oils and fats	2.8385	193.2	184.2	1.6	-2.3	2.0	0.9	1.8	0.7	-1.6	-1.0	-1.8	-0.8	-4.7	
01.1.6 Fruit	9.5718	136.5	140.8	-0.7	-0.7	3.8	4.1	2.1	2.4	1.8	2.4	2.5	3.1	3.1	
01.1.7 Vegetables including potatoes and tubers	15.2253	136.2	140.7	-0.7	0.1	3.5	1.7	2.3	2.0	2.4	2.3	2.9	2.5	3.3	
01.1.8 Sugar, jam, syrups, chocolate and confectionery	12.3026	144.5	153.3	1.9	-0.8	10.4	10.8	11.9	11.2	10.2	10.4	5.9	9.0	6.1	
01.1.9 Food products (nec)	4.7492	150.6	156.8	0.3	0.1	3.6	3.7	4.3	3.2	5.1	3.8	4.5	4.3	4.1	
<b>01.2 Non-alcoholic beverages</b>	12.3085	145.7	151.3	1.8	0.2	7.7	6.6	6.2	6.5	6.0	4.3	4.4	5.5	3.8	
01.2.1 Coffee, tea and cocoa	2.7627	140.0	147.2	2.2	-0.2	11.2	9.9	10.1	11.1	9.6	4.9	5.3	7.6	5.1	
01.2.2 Mineral waters, soft drinks and juices	9.5458	147.1	152.1	1.7	0.3	6.7	5.7	5.1	5.3	5.0	4.1	4.1	4.9	3.4	
<b>02.1 Alcoholic beverages</b>	20.9379	123.0	122.5	0.5	-0.3	4.3	4.0	4.2	3.8	3.9	3.1	0.9	0.4	-0.4	
02.1.1 Spirits	5.9470	121.1	118.2	1.6	-0.8	4.8	4.1	4.7	4.4	4.0	2.8	0.9	-0.1	-2.4	
02.1.2 Wine	9.9487	119.2	119.8	-0.4	-0.1	3.7	3.1	3.2	3.2	3.6	2.2	0.5	0.1	0.5	
02.1.3 Beer	5.0422	132.8	133.1	0.9	-0.3	4.8	5.5	5.5	4.1	4.3	5.3	1.6	1.4	0.2	
<b>02.2 Tobacco</b>	16.2271	190.0	202.6	0.4	0.4	7.7	7.8	7.7	4.2	6.5	6.2	6.7	6.7	6.7	
<b>03.1 Clothing</b>	48.4667	122.0	123.4	-1.0	0.5	0.5	1.0	0.8	-0.2	0.5	0.3	1.6	-0.3	1.1	
03.1.2 Garments	42.2156	122.3	123.8	-1.0	0.5	0.7	1.1	0.7	-0.4	0.5	0.5	1.7	-0.3	1.3	
03.1.3 Other clothing and clothing accessories	5.7050	116.0	116.1	-0.8	-0.1	-1.5	-0.2	1.2	-	-0.6	-1.3	0.8	-0.6	0.1	
03.1.4 Cleaning, repair and hire of clothing	0.5462	152.4	161.0	1.3	0.5	6.5	7.0	6.7	6.5	6.7	6.7	6.7	6.4	5.6	
<b>03.2 Footwear including repairs</b>	8.2543	102.6	101.1	-1.8	0.4	-1.8	-2.9	-2.5	-2.8	-2.3	-1.6	-2.8	-3.6	-1.4	
<b>04.1 Actual rentals for housing</b>	84.2719	131.7	136.3	0.3	0.7	4.4	4.3	4.1	3.8	3.6	3.1	3.2	3.1	3.5	
<b>04.3 Regular maintenance and repair of the dwelling</b>	3.2323	116.5	118.6	-0.3	0.5	0.8	0.5	0.4	0.1	0.5	0.5	1.0	1.0	1.8	
04.3.1 Materials for maintenance and repair	1.1361	129.1	133.6	-1.0	1.3	0.6	-0.4	-0.6	-1.1	-1.2	0.2	1.3	1.2	3.5	
04.3.2 Services for maintenance and repair	2.0963	110.1	111.0	0.1	-	1.0	1.0	1.0	0.9	1.0	0.7	0.8	0.9	0.8	
<b>04.4 Water supply and misc. services for the dwelling</b>	11.7648	164.5	176.5	26.1	7.3	26.1	26.1	26.1	26.1	26.1	26.1	26.1	26.1	7.3	
04.4.1 Water supply	5.6896	165.5	180.5	26.4	9.0	26.4	26.4	26.4	26.4	26.4	26.4	26.4	26.4	9.0	
04.4.3 Sewerage collection	6.0752	164.0	173.4	25.9	5.8	25.9	25.9	25.9	25.9	25.9	25.9	25.9	25.9	5.8	
<b>04.5 Electricity, gas and other fuels</b>	31.9821	180.4	170.1	4.4	-6.3	9.3	9.4	2.2	2.6	2.5	2.1	2.1	5.0	-5.7	
04.5.1 Electricity	20.6065	196.8	184.9	2.9	-8.4	8.0	8.0	2.7	2.8	2.7	5.3	5.3	5.6	-6.0	
04.5.2 Gas	10.3002	158.6	137.1	7.5	-4.4	13.0	13.0	2.1	2.1	2.1	-2.7	-3.1	-2.8	-13.5	
04.5.3 Liquid fuels	0.8151	141.5	324.9	-7.7	8.5	-8.2	-5.7	-5.0	5.5	3.3	-7.0	-5.2	95.3	129.6	
04.5.4 Solid fuels	0.2603	152.7	154.9	-	2.3	-1.4	-5.2	-0.8	-	0.6	-0.5	-0.6	-0.9	1.4	
<b>05.1 Furniture, furnishings and carpets</b>	18.0792	136.1	137.8	-2.4	-0.8	0.3	-0.2	-0.1	-0.7	-0.9	0.1	-0.3	-0.4	1.3	
05.1.1 Furniture and furnishings	13.9967	136.1	137.2	-2.7	-1.1	0.6	-0.2	-0.3	-0.9	-1.4	-0.3	-0.9	-0.8	0.8	
05.1.2 Carpets and other floor coverings	4.0825	136.7	140.4	-0.7	0.5	-0.5	0.2	1.1	1.0	2.0	1.1	1.8	1.5	2.7	
<b>05.2 Household textiles</b>	4.6579	113.5	114.4	-1.4	0.1	2.3	2.6	0.6	-0.1	-0.2	-0.2	-0.7	-0.8	0.8	
<b>05.3 Household appliances, fitting and repairs</b>	10.4341	117.8	118.6	-3.8	-1.3	1.0	-0.7	1.0	-1.0	-0.9	-2.7	1.1	-1.8	0.7	
05.3.1/2 Major appliances and small electric goods	9.8906	117.8	118.7	-4.0	-1.3	1.0	-0.8	1.0	-1.1	-1.0	-2.9	1.1	-2.0	0.7	
05.3.3 Repair of household appliances	0.5435	122.5	124.2	0.1	0.3	0.6	0.6	1.1	1.2	1.1	1.3	1.2	1.2	1.4	
<b>05.4 Glassware, tableware and household utensils</b>	5.1149	109.0	110.0	-0.8	1.4	-0.5	-1.3	-1.1	-1.3	-0.6	-2.0	-1.9	-1.4	0.8	
<b>05.5 Tools and equipment for house and garden</b>	6.0246	117.4	116.8	-1.4	-2.1	1.7	1.8	1.4	-0.2	-0.4	-0.5	1.4	0.2	-0.5	
<b>05.6 Goods and services for routine maintenance</b>	9.5226	132.9	132.3	0.8	-1.0	1.1	2.3	0.3	1.5	-	1.5	0.5	1.5	-0.4	
05.6.1 Non-durable household goods	5.8967	117.9	114.8	1.1	-1.8	-1.3	0.5	-2.4	-0.6	-2.3	-0.1	-1.3	0.2	-2.6	
05.6.2 Domestic services and household services	3.6259	138.5	143.1	0.4	0.2	5.5	5.4	5.2	5.1	4.2	4.1	3.8	3.6	3.3	
<b>06.1 Medical products, appliances and equipment</b>	9.3601	130.4	132.8	0.3	-0.4	3.9	3.9	3.4	3.0	2.0	2.2	2.4	2.5	1.9	
06.1.1 Pharmaceutical products	6.1461	137.3	139.6	0.2	-0.8	3.9	4.2	3.3	2.6	1.8	2.4	2.7	2.8	1.7	
06.1.2/3 Other medical and therapeutic equipment	3.2140	119.2	121.8	0.3	0.4	3.7	3.3	3.5	3.8	2.4	1.8	1.8	2.1	2.2	

Key:- zero or negligible .. not available (nec) not elsewhere covered

# CPI: Detailed figures by divisions, groups and classes <sup>1</sup>

continued

	WeightsIndex (2015=100)		Percentage change over 1 month				Percentage change over 12 months							
	2026	2025 Apr	2026 Apr	2025 Apr	2026 Apr	2025 Aug	2025 Sep	2025 Oct	2025 Nov	2025 Dec	2026 Jan	2026 Feb	2026 Mar	2026 Apr
<b>06.2 Out-patient services</b>	8.0740	137.1	143.2	0.5	0.7	4.5	4.6	4.7	5.0	4.9	4.6	4.5	4.2	4.4
06.2.1/3 Medical services & paramedical services	3.9287	127.7	132.1	0.2	0.5	3.3	3.3	3.4	3.6	3.7	3.5	3.4	3.1	3.4
06.2.2 Dental services	4.1453	149.5	157.6	0.9	0.9	6.0	6.1	6.4	6.7	6.4	5.9	5.8	5.4	5.4
<b>06.3 Hospital services</b>	8.7450	164.0	166.1	0.3	-1.2	2.0	2.0	0.1	-	-0.2	2.9	2.8	2.8	1.3
<b>07.1 Purchase of vehicles</b>	45.4242	125.2	125.4	0.7	0.1	1.9	1.7	1.8	1.3	1.5	1.2	1.2	0.8	0.2
07.1.1A New cars	16.6983	139.6	140.7	0.6	-	3.1	2.7	3.1	2.4	2.4	1.8	1.9	1.4	0.8
07.1.1B Second-hand cars	26.5774	112.7	112.3	1.0	0.1	1.1	1.1	1.1	0.9	1.1	1.1	0.8	0.4	-0.4
07.1.2/3 Motorcycles and bicycles	2.1485	120.8	123.2	-0.8	0.8	0.9	-0.3	-1.1	-2.3	-1.1	-0.8	0.6	0.4	2.0
<b>07.2 Operation of personal transport equipment</b>	67.7420	142.0	156.9	3.8	7.0	2.2	4.4	5.3	5.1	5.2	3.6	2.7	7.1	10.5
07.2.1 Spare parts and accessories	4.6330	136.8	142.9	0.6	0.3	4.6	4.3	4.6	2.2	4.9	5.5	4.6	4.8	4.5
07.2.2 Fuels and lubricants	26.3688	122.5	150.7	-2.1	14.8	-4.9	-1.2	1.4	1.0	0.9	-2.2	-4.6	4.9	23.0
07.2.3 Maintenance and repairs	19.0918	148.1	160.4	-	0.7	5.6	7.8	6.0	6.5	6.4	5.2	6.0	7.6	8.3
07.2.4 Other services	17.6483	186.9	180.5	19.4	3.1	11.6	11.6	11.7	11.8	11.9	11.9	11.8	11.8	-3.4
<b>07.3 Transport services</b>	27.8012	158.1	154.3	8.6	0.8	3.0	5.7	3.3	4.6	5.4	2.7	3.5	5.1	-2.4
07.3.1 Passenger transport by railway	10.0499	146.0	147.0	2.9	1.3	7.6	5.4	4.2	6.0	4.6	4.5	5.3	2.4	0.7
07.3.2 Passenger transport by road	10.4918	166.7	171.7	1.9	1.3	5.7	5.3	5.1	4.8	4.3	2.7	3.1	3.7	3.0
07.3.3 Passenger transport by air	5.2374	171.5	149.0	27.5	-3.3	-3.5	5.5	0.9	0.3	11.0	0.6	3.8	14.5	-13.2
07.3.4 Passenger transport by sea and inland waterway	2.0220	176.8	171.7	16.0	8.6	4.7	5.6	0.2	3.1	-1.4	1.5	-0.2	3.7	-2.9
<b>08.1 Postal services</b>	1.0554	175.4	180.9	3.6	3.5	7.5	6.8	2.7	3.6	1.4	3.6	2.4	3.3	3.1
<b>08.2/3 Telephone and telefax equipment and services</b>	23.3101	141.1	147.5	4.3	4.7	6.0	4.6	4.4	4.8	4.3	4.6	4.3	4.1	4.5
<b>09.1 Audio-visual equipment and related products</b>	15.8882	95.8	95.8	-1.6	2.8	-3.1	-4.1	-2.3	2.7	-1.8	-1.8	-2.4	-4.2	0.1
09.1.1 Reception and reproduction of sound and pictures	2.4295	80.9	75.6	-2.2	-1.0	-6.9	-6.1	-7.2	-5.8	-7.5	-8.4	-7.4	-7.8	-6.7
09.1.2 Photographic, cinematographic and optical equipment	1.4077	81.8	81.3	-2.1	5.7	7.7	1.4	-0.7	6.3	-3.2	-5.1	-2.2	-8.0	-0.7
09.1.3 Data processing equipment	6.4230	75.8	74.5	-2.3	5.2	-4.1	-4.1	-2.4	1.3	-1.0	-4.5	-3.6	-8.7	-1.7
09.1.4 Recording media	5.4966	153.1	160.3	-0.5	1.0	-1.4	-3.8	0.4	8.3	0.8	5.4	0.8	3.2	4.7
09.1.5 Repair of audio-visual equipment & related products	0.1314	106.3	107.7	0.1	-	-10.6	-10.6	2.6	2.3	2.4	2.4	2.4	1.5	1.4
<b>09.2 Oth. major durables for recreation &amp; culture</b>	8.1890	132.5	130.4	1.4	-0.5	4.4	4.5	3.1	3.0	2.9	0.7	0.3	0.3	-1.6
09.2.1/2 Major durables for in/outdoor recreation	8.1890	132.5	130.4	1.4	-0.5	4.4	4.5	3.1	3.0	2.9	0.7	0.3	0.3	-1.6
<b>09.3 Other recreational items, gardens and pets</b>	37.0326	123.2	124.4	-0.3	-0.6	1.4	2.2	1.9	0.6	0.4	-1.2	-0.3	1.4	1.0
09.3.1 Games, toys and hobbies	9.2056	106.2	104.7	-1.2	-3.2	-0.2	1.0	1.2	-1.6	-1.4	-6.5	-5.7	0.5	-1.4
09.3.2 Equipment for sport and open-air recreation	8.1526	121.3	118.4	-0.3	-0.5	0.2	1.6	0.7	-1.1	-2.9	-3.4	-2.2	-2.2	-2.4
09.3.3 Gardens, plants and flowers	5.2994	128.0	127.2	-0.1	-0.3	0.3	1.1	-	0.2	0.5	0.5	0.3	-0.4	-0.6
09.3.4/5 Pets, related products and services	14.3750	143.4	151.1	0.4	0.8	3.7	3.8	3.9	3.4	3.7	3.4	4.3	5.0	5.4
<b>09.4 Recreational and cultural services</b>	42.9241	142.3	148.3	3.0	1.4	5.5	3.9	5.1	4.3	4.8	6.5	5.8	5.8	4.2
09.4.1 Recreational and sporting services	14.3213	145.3	150.9	3.1	1.5	5.2	5.3	5.5	5.4	5.4	5.6	5.6	5.5	3.9
09.4.2 Cultural services	28.6028	141.4	147.5	2.9	1.4	5.7	3.2	4.9	3.7	4.5	7.0	5.9	5.9	4.3
<b>09.5 Books, newspapers and stationery</b>	11.0440	156.7	159.4	0.7	0.2	4.3	2.4	1.7	2.0	3.6	3.6	2.9	2.2	1.7
09.5.1 Books	3.1028	150.4	147.0	0.9	-1.7	4.0	-1.9	-4.8	-2.7	0.8	2.3	1.6	0.4	-2.3
09.5.2 Newspapers and periodicals	3.2720	202.0	218.2	2.4	2.1	10.3	10.4	9.4	8.6	9.8	9.5	8.3	8.3	8.0
09.5.3/4 Misc. printed matter, stationery, drawing materials	4.6692	135.2	135.8	-0.3	0.3	1.2	0.6	1.5	1.3	1.8	1.0	0.6	-0.1	0.4
<b>09.6 Package holidays</b>	37.0710	156.8	158.5	2.3	-1.3	4.6	4.3	4.1	4.1	4.5	4.4	4.5	4.7	1.0
<b>10.0 Education</b>	34.2466	145.3	152.7	-	-	7.5	7.2	7.6	7.6	7.6	5.1	5.1	5.1	5.1
<b>11.1 Catering services</b>	110.0465	147.3	154.0	0.6	0.5	4.2	4.3	4.6	4.7	4.8	4.9	4.7	4.7	4.6
11.1.1 Restaurants & cafes	106.7561	149.0	155.6	0.6	0.5	4.1	4.1	4.4	4.6	4.7	4.8	4.5	4.5	4.5
11.1.2 Canteens	3.2904	106.5	116.2	0.9	-0.1	5.3	9.4	9.3	9.7	9.9	9.6	9.2	10.1	9.1
<b>11.2 Accommodation services</b>	28.5811	151.9	157.6	0.3	2.7	2.3	2.9	0.8	-0.9	-0.1	1.1	1.5	1.4	3.8
<b>12.1 Personal care</b>	28.7543	124.5	126.9	0.2	0.7	1.3	1.0	1.4	1.2	1.2	1.3	2.2	1.4	1.9
12.1.1 Hairdressing and personal grooming establishments	7.6830	143.4	149.2	1.0	1.2	4.3	4.3	4.3	4.2	4.2	4.4	4.2	3.8	4.1
12.1.2/3 Appliances and products for personal care	21.0712	118.6	120.1	-	0.6	0.3	-	0.5	0.4	0.3	0.4	1.6	0.7	1.3
<b>12.3 Personal effects (nec)</b>	11.3364	118.3	126.8	-0.3	-0.3	4.3	4.3	4.6	4.1	5.1	5.2	6.1	7.2	7.2
12.3.1 Jewellery, clocks and watches	7.9991	126.4	138.8	-0.2	-0.3	5.6	6.0	6.3	5.9	6.9	6.9	8.6	10.0	9.8
12.3.2 Other personal effects	3.3373	102.3	103.1	-0.5	-0.1	0.6	-0.2	-0.2	-0.4	0.6	0.8	-	0.4	0.8
<b>12.4 Social protection</b>	15.1287	145.4	152.0	0.5	0.5	5.0	4.8	4.9	4.8	4.7	4.7	4.6	4.6	4.5
<b>12.5 Insurance</b>	7.1236	167.0	168.6	0.9	-0.4	-3.9	-3.4	-2.8	-3.0	-2.6	1.9	1.9	2.4	1.0
12.5.2 House contents insurance	0.8188	133.7	115.6	0.2	-0.5	-7.2	-8.4	-11.7	-14.7	-15.8	-15.8	-13.7	-12.9	-13.5
12.5.3 Health insurance	4.0643	171.3	173.3	1.7	-1.2	-2.5	-2.5	-2.1	-2.1	-2.1	4.2	4.2	4.2	1.2
12.5.4 Transport insurance	2.2405	172.7	182.4	-0.2	1.0	-6.1	-4.0	-1.5	-1.0	1.0	4.0	3.1	4.3	5.6
<b>12.6 Financial services (nec)</b>	14.3072	91.9	90.6	0.1	-0.1	2.1	0.9	0.8	0.7	0.6	-1.1	-1.2	-1.2	-1.5
12.6.2 Other financial services (nec)	14.3072	91.9	90.6	0.1	-0.1	2.1	0.9	0.8	0.7	0.6	-1.1	-1.2	-1.2	-1.5
<b>12.7 Other services (nec)</b>	18.2385	108.3	111.8	0.2	0.9	3.4	3.4	3.6	3.5	3.4	2.7	2.6	2.5	3.2

<sup>1</sup> As a direct result of the reduced availability of products due to the coronavirus (COVID-19) pandemic, some series are based on less than half of the number of quotes used in February 2020 (the most recent 'normal' collection). To identify which series are affected please consult

the latest Consumer price inflation tables which can be located here: <https://www.ons.gov.uk/economy/inflationandpriceindices/datasets/consumer-priceinflation>, which includes notation to reflect the reduced coverage.

Source: Office for National Statistics

# C1 CPIH: Detailed figures by divisions, groups and classes<sup>1</sup>

	Weights Index (2015=100)			Percentage change over 1 month					Percentage change over 12 months						
	2026	2025 Apr	2026 Apr	2025 Apr	2026 Apr	2025 Aug	2025 Sep	2025 Oct	2025 Nov	2025 Dec	2026 Jan	2026 Feb	2026 Mar	2026 Apr	
<b>CPIH (overall index)</b>	1 000	137.7	141.8	1.2	0.8	4.1	4.1	3.8	3.5	3.6	3.2	3.2	3.4	3.0	
01 Food and non-alcoholic beverages	86.5796	140.6	144.9	0.7	-	5.1	4.5	4.9	4.2	4.5	3.6	3.3	3.7	3.0	
02 Alcoholic beverages and tobacco	29.3573	155.5	159.9	0.4	-	5.9	5.8	5.9	4.0	5.2	4.6	3.6	3.3	2.8	
03 Clothing and footwear	44.8049	119.0	119.9	-1.1	0.4	0.2	0.5	0.3	-0.6	-	-	0.9	-0.8	0.7	
04 Housing, water, electricity, gas and other fuels	313.7606	140.1	144.3	1.8	0.4	6.0	5.9	5.0	4.8	4.6	4.2	4.2	4.3	3.0	
05 Furniture, household equipment and maintenance	42.5238	125.0	125.7	-1.7	-0.8	0.8	0.4	0.3	-0.3	-0.6	-0.5	0.1	-0.4	0.5	
06 Health	20.6793	139.3	142.7	0.3	-0.3	3.4	3.5	2.7	2.6	2.1	3.1	3.1	3.1	2.4	
07 Transport	111.3525	139.5	145.7	3.8	3.6	2.4	3.8	3.8	3.7	4.0	2.7	2.4	4.7	4.5	
08 Communication	19.2467	142.7	149.1	4.3	4.7	6.1	4.7	4.3	4.8	4.2	4.6	4.3	4.1	4.5	
09 Recreation and culture	120.1850	133.8	136.1	1.2	0.2	3.2	2.7	2.9	2.9	2.7	2.6	2.5	2.8	1.7	
10 Education	27.0520	145.3	152.7	-	-	7.5	7.2	7.6	7.6	7.6	5.1	5.1	5.1	5.1	
11 Restaurants and hotels	109.5043	148.2	154.7	0.6	1.0	3.8	3.9	3.8	3.5	3.8	4.1	4.0	4.0	4.4	
12 Miscellaneous goods and services	74.9541	122.6	125.8	0.2	0.4	2.3	2.0	2.3	2.1	2.2	2.2	2.6	2.5	2.6	
<b>04.2 Owner occupiers housing costs</b>	181.4333	133.2	137.9	0.2	0.2	5.3	5.2	4.8	4.5	4.2	3.9	3.8	3.6	3.6	
<b>All goods</b>	380.4504	132.6	135.9	0.3	0.6	2.8	2.9	2.6	2.1	2.2	1.6	1.6	2.1	2.4	
<b>All services</b>	619.5496	140.3	145.1	1.8	0.9	4.9	4.9	4.6	4.5	4.5	4.3	4.2	4.3	3.4	
<b>CPIH excluding Energy, food, alcoholic beverages &amp; tobacco</b>	837.9707	135.1	138.9	1.3	0.7	4.0	3.9	3.7	3.5	3.5	3.3	3.4	3.3	2.8	
<b>01.1 Food</b>	76.8569	140.0	144.1	0.6	-	4.8	4.3	4.8	4.0	4.4	3.5	3.2	3.5	2.9	
01.1.1 Bread and cereals	14.1926	141.4	142.7	0.6	0.9	3.9	3.1	4.3	2.0	4.0	1.5	1.6	0.6	0.9	
01.1.2 Meat	15.0949	131.3	136.1	2.0	-0.1	6.2	6.2	6.6	6.5	6.9	5.2	5.1	5.8	3.6	
01.1.3 Fish	2.9354	130.7	138.1	0.7	1.9	0.5	-1.6	0.4	-0.3	1.1	1.2	2.0	4.5	5.7	
01.1.4 Milk, cheese and eggs	9.3347	143.5	146.4	-0.6	-	4.2	3.6	3.7	2.5	2.5	1.3	2.1	1.3	2.0	
01.1.5 Oils and fats	2.2422	193.2	184.2	1.6	-2.3	2.0	0.9	1.8	0.7	-1.6	-1.0	-1.8	-0.8	-4.7	
01.1.6 Fruit	7.5609	136.5	140.8	-0.7	-0.7	3.8	4.1	2.1	2.4	1.8	2.4	2.5	3.1	3.1	
01.1.7 Vegetables including potatoes and tubers	12.0268	136.2	140.7	-0.7	0.1	3.5	1.7	2.3	2.0	2.4	2.3	2.9	2.5	3.3	
01.1.8 Sugar, jam, syrups, chocolate and confectionery	9.7180	144.5	153.3	1.9	-0.8	10.4	10.8	11.9	11.2	10.2	10.4	5.9	5.0	6.1	
01.1.9 Food products (nec)	3.7515	150.6	156.8	0.3	0.1	3.6	3.7	4.3	3.2	5.1	3.8	4.5	4.3	4.1	
<b>01.2 Non-alcoholic beverages</b>	9.7227	145.0	150.5	1.8	0.2	7.7	6.6	6.2	6.5	6.0	4.3	4.4	5.5	3.8	
01.2.1 Coffee, tea and cocoa	2.1823	140.0	147.2	2.2	-0.2	11.2	9.9	10.1	11.1	9.6	4.9	5.3	7.6	5.1	
01.2.2 Mineral waters, soft drinks and juices	7.5404	147.1	152.1	1.7	0.3	6.7	5.7	5.1	5.3	5.0	4.1	4.1	4.9	3.4	
<b>02.1 Alcoholic beverages</b>	16.5392	123.2	122.7	0.5	-0.3	4.3	4.0	4.2	3.8	3.9	3.1	0.9	0.4	-0.4	
02.1.1 Spirits	4.6976	121.1	118.2	1.6	-0.8	4.8	4.1	4.7	4.4	4.0	2.8	0.9	-0.1	-2.4	
02.1.2 Wine	7.8587	119.2	119.8	-0.4	-0.1	3.7	3.1	3.2	3.2	3.6	2.2	0.5	0.1	0.5	
02.1.3 Beer	3.9829	132.8	133.1	0.9	-0.3	4.8	5.5	5.5	4.1	4.3	5.3	1.6	1.4	0.2	
<b>02.2 Tobacco</b>	12.8180	190.0	202.6	0.4	0.4	7.7	7.8	7.7	4.2	6.5	6.2	6.7	6.7	6.7	
<b>03.1 Clothing</b>	38.2847	122.3	123.7	-1.0	0.5	0.5	1.0	0.8	-0.2	0.5	0.3	1.6	-0.3	1.1	
03.1.2 Garments	33.3468	122.3	123.8	-1.0	0.5	0.7	1.1	0.7	-0.4	0.5	0.5	1.7	-0.3	1.3	
03.1.3 Other clothing and clothing accessories	4.5065	116.0	116.1	-0.8	-0.1	-1.5	-0.2	1.2	-	-0.6	-1.3	0.8	-0.6	0.1	
03.1.4 Cleaning, repair and hire of clothing	0.4314	152.4	161.0	1.3	0.5	6.5	7.0	6.7	6.5	6.7	6.7	6.7	6.4	5.6	
<b>03.2 Footwear including repairs</b>	6.5202	102.6	101.1	-1.8	0.4	-1.8	-2.9	-2.5	-2.8	-2.3	-1.6	-2.8	-3.6	-1.4	
<b>04.1 Actual rentals for housing</b>	66.5678	131.7	136.3	0.3	0.7	4.4	4.3	4.1	3.8	3.6	3.1	3.2	3.1	3.5	
<b>04.2 Owner occupiers housing costs</b>	181.4333	133.2	137.9	0.2	0.2	5.3	5.2	4.8	4.5	4.2	3.9	3.8	3.6	3.6	
<b>04.3 Regular maintenance and repair of the dwelling</b>	2.5533	120.1	122.3	-0.3	0.5	0.8	0.5	0.4	0.1	0.5	0.5	1.0	1.0	1.8	
04.3.1 Materials for maintenance and repair	0.8974	129.1	133.6	-1.0	1.3	0.6	-0.4	-0.6	-1.1	-0.2	0.2	1.3	1.2	3.5	
04.3.2 Services for maintenance and repair	1.6559	110.1	111.0	0.1	-	1.0	1.0	1.0	0.9	1.0	0.7	0.8	0.9	0.8	
<b>04.4 Water supply and misc. services for the dwelling</b>	9.2932	164.4	176.5	26.1	7.3	26.1	26.1	26.1	26.1	26.1	26.1	26.1	26.1	7.3	
04.4.1 Water supply	4.4943	165.5	180.5	26.4	9.0	26.4	26.4	26.4	26.4	26.4	26.4	26.4	26.4	9.0	
04.4.3 Sewerage collection	4.7989	164.0	173.4	25.9	5.8	25.9	25.9	25.9	25.9	25.9	25.9	25.9	25.9	5.8	
<b>04.5 Electricity, gas and other fuels</b>	25.2632	180.0	169.7	4.4	-6.3	9.3	9.4	2.2	2.6	2.5	2.1	2.1	5.0	-5.7	
04.5.1 Electricity	16.2774	196.8	184.9	2.9	-8.4	8.0	8.0	2.7	2.8	2.7	5.3	5.3	5.6	-6.0	
04.5.2 Gas	8.1363	158.6	137.1	7.5	-4.4	13.0	13.0	2.1	2.1	2.1	-2.7	-3.1	-2.8	-13.5	
04.5.3 Liquid fuels	0.6439	141.5	324.9	-7.7	8.5	-8.2	-5.7	-5.0	5.5	3.3	-7.0	-5.2	95.3	129.6	
04.5.4 Solid fuels	0.2056	152.7	154.9	-	2.3	-1.4	-5.2	-0.8	-	0.6	-0.5	-0.6	-0.9	1.4	
<b>04.9 Council tax and rates</b>	28.6498	152.7	160.4	5.4	5.1	5.4	5.4	5.4	5.4	5.4	5.4	5.4	5.4	5.1	
<b>05.1 Furniture, furnishings and carpets</b>	14.2810	135.9	137.6	-2.4	-0.8	0.3	-0.2	-0.1	-0.7	-0.9	0.1	-0.3	-0.4	1.3	
05.1.1 Furniture and furnishings	11.0562	136.1	137.2	-2.7	-1.1	0.6	-0.2	-0.3	-0.9	-1.4	-0.3	-0.9	-0.8	0.8	
05.1.2 Carpets and other floor coverings	3.2248	136.7	140.4	-0.7	0.5	-0.5	0.2	1.1	1.0	2.0	1.1	1.8	1.5	2.7	
<b>05.2 Household textiles</b>	3.6793	113.5	114.4	-1.4	0.1	2.3	2.6	0.6	-0.1	-0.2	-0.2	-0.7	-0.8	0.8	
<b>05.3 Household appliances, fitting and repairs</b>	8.2421	117.6	118.4	-3.8	-1.3	1.0	-0.7	1.0	-1.0	-0.9	-2.7	1.1	-1.8	0.7	
05.3.1/2 Major appliances and small electric goods	7.8127	117.8	118.7	-4.0	-1.3	1.0	-0.8	1.0	-1.1	-1.0	-2.9	1.1	-2.0	0.7	
05.3.3 Repair of household appliances	0.4293	122.5	124.2	0.1	0.3	0.6	0.6	1.1	1.2	1.1	1.3	1.2	1.2	1.4	
<b>05.4 Glassware, tableware and household utensils</b>	4.0404	109.0	110.0	-0.8	1.4	-0.5	-1.3	-1.1	-1.3	-0.6	-2.0	-1.9	-1.4	0.8	
<b>05.5 Tools and equipment for house and garden</b>	4.7589	117.4	116.8	-1.4	-2.1	1.7	1.8	1.4	-0.2	-0.4	-0.5	1.4	0.2	-0.5	
<b>05.6 Goods and services for routine maintenance</b>	7.5221	133.0	132.5	0.8	-1.0	1.1	2.3	0.3	1.5	-	1.5	0.5	1.5	-0.4	
05.6.1 Non-durable household goods	4.6579	117.9	114.8	1.1	-1.8	-1.3	0.5	-2.4	-0.6	-2.3	-0.1	-1.3	0.2	-2.6	
05.6.2 Domestic services and household services	2.8642	138.5	143.1	0.4	0.2	5.5	5.4	5.2	5.1	4.2	4.1	3.8	3.6	3.3	

Key:- zero or negligible .. not available (nec) not elsewhere covered

continued

	Weights Index (2015=100)			Percentage change over 1 month				Percentage change over 12 months							
	2026	2025 Apr	2026 Apr	2025 Apr	2026 Apr	2025 Aug	2025 Sep	2025 Oct	2025 Nov	2025 Dec	2026 Jan	2026 Feb	2026 Mar	2026 Apr	
<b>06.1 Medical products, appliances and equipment</b>	7.3937	130.5	132.9	0.3	-0.4	3.9	3.9	3.4	3.0	2.0	2.2	2.4	2.5	1.9	
06.1.1 Pharmaceutical products	4.8549	137.3	139.6	0.2	-0.8	3.9	4.2	3.3	2.6	1.8	2.4	2.7	2.8	1.7	
06.1.2/3 Other medical and therapeutic equipment	2.5388	119.2	121.8	0.3	0.4	3.7	3.3	3.5	3.8	2.4	1.8	1.8	2.1	2.2	
<b>06.2 Out-patient services</b>	6.3778	136.5	142.6	0.5	0.7	4.5	4.6	4.7	5.0	4.9	4.6	4.5	4.2	4.4	
06.2.1/3 Medical services & paramedical services	3.1033	127.7	132.1	0.2	0.5	3.3	3.3	3.4	3.6	3.7	3.5	3.4	3.1	3.4	
06.2.2 Dental services	3.2744	149.5	157.6	0.9	0.9	6.0	6.1	6.4	6.7	6.4	5.9	5.8	5.4	5.4	
<b>06.3 Hospital services</b>	6.9078	164.0	166.1	0.3	-1.2	2.0	2.0	0.1	-	-0.2	2.9	2.8	2.8	1.3	
<b>07.1 Purchase of vehicles</b>	35.8813	124.4	124.6	0.7	0.1	1.9	1.7	1.8	1.3	1.5	1.2	1.2	0.8	0.2	
07.1.1A New cars	13.1903	139.6	140.7	0.6	-	3.1	2.7	3.1	2.4	2.4	1.8	1.9	1.4	0.8	
07.1.1B Second-hand cars	20.9939	112.7	112.3	1.0	0.1	1.1	1.1	1.1	0.9	1.1	1.1	0.8	0.4	-0.4	
07.1.2/3 Motorcycles and bicycles	1.6971	120.8	123.2	-0.8	0.8	0.9	-0.3	-1.1	-2.3	-1.1	-0.8	0.6	0.4	2.0	
<b>07.2 Operation of personal transport equipment</b>	53.5106	141.7	156.5	3.8	7.0	2.2	4.4	5.3	5.1	5.2	3.6	2.7	7.1	10.5	
07.2.1 Spare parts and accessories	3.6597	136.8	142.9	0.6	0.3	4.6	4.3	4.6	2.2	4.9	5.5	4.6	4.8	4.5	
07.2.2 Fuels and lubricants	20.8292	122.5	150.7	-2.1	14.8	-4.9	-1.2	1.4	1.0	0.9	-2.2	-4.6	4.9	23.0	
07.2.3 Maintenance and repairs	15.0810	148.1	160.4	-	0.7	5.6	7.8	6.0	6.5	6.4	5.2	6.0	7.6	8.3	
07.2.4 Other services	13.9407	186.9	180.5	19.4	3.1	11.6	11.6	11.7	11.8	11.9	11.9	11.8	11.8	-3.4	
<b>07.3 Transport services</b>	21.9607	163.2	159.3	8.6	0.8	3.0	5.7	3.3	4.6	5.4	2.7	3.5	5.1	-2.4	
07.3.1 Passenger transport by railway	7.9386	146.0	147.0	2.9	1.3	7.6	5.4	4.2	6.0	4.6	4.5	5.3	2.4	0.7	
07.3.2 Passenger transport by road	8.2877	166.7	171.7	1.9	1.3	5.7	5.3	5.1	4.8	4.3	2.7	3.1	3.7	3.0	
07.3.3 Passenger transport by air	4.1371	171.5	149.0	27.5	-3.3	-3.5	5.5	0.9	0.3	11.0	0.6	3.8	14.5	-13.2	
07.3.4 Passenger transport by sea and inland waterway	1.5972	176.8	171.7	16.0	8.6	4.7	5.6	0.2	3.1	-1.4	1.5	-0.2	3.7	-2.9	
<b>08.1 Postal services</b>	0.8336	175.4	180.9	3.6	3.5	7.5	6.8	2.7	3.6	1.4	3.6	2.4	3.3	3.1	
<b>08.2/3 Telephone and telefax equipment and services</b>	18.4130	141.1	147.5	4.3	4.7	6.0	4.6	4.4	4.8	4.3	4.6	4.3	4.1	4.5	
<b>09.1 Audio-visual equipment and related products</b>	12.5504	97.5	97.6	-1.6	2.8	-3.1	-4.1	-2.3	2.7	-1.8	-1.8	-2.4	-4.2	0.1	
09.1.1 Reception and reproduction of sound and pictures	1.9191	80.9	75.6	-2.2	-1.0	-6.9	-6.1	-7.2	-5.8	-7.5	-8.4	-7.4	-7.8	-6.7	
09.1.2 Photographic, cinematographic and optical equipment	1.1120	81.8	81.3	-2.1	5.7	7.7	1.4	-0.7	6.3	-3.2	-5.1	-2.2	-8.0	-0.7	
09.1.3 Data processing equipment	5.0736	75.8	74.5	-2.3	5.2	-4.1	-4.1	-2.4	1.3	-1.0	-4.5	-3.6	-8.7	-1.7	
09.1.4 Recording media	4.3419	153.1	160.3	-0.5	1.0	-1.4	-3.8	0.4	8.3	0.8	5.4	0.8	3.2	4.7	
09.1.5 Repair of audio-visual equipment & related products	0.1038	106.3	107.7	0.1	-	-10.6	-10.6	2.6	2.3	2.4	2.4	2.4	1.5	1.4	
<b>09.2 Oth. major durables for recreation &amp; culture</b>	6.4686	132.5	130.4	1.4	-0.5	4.4	4.5	3.1	3.0	2.9	0.7	0.3	0.3	-1.6	
09.2.1/2 Major durables for in/outdoor recreation	6.4686	132.5	130.4	1.4	-0.5	4.4	4.5	3.1	3.0	2.9	0.7	0.3	0.3	-1.6	
<b>09.3 Other recreational items, gardens and pets</b>	29.2527	123.4	124.7	-0.3	-0.6	1.4	2.2	1.9	0.6	0.4	-1.2	-0.3	1.4	1.0	
09.3.1 Games, toys and hobbies	7.2716	106.2	104.7	-1.2	-3.2	-0.2	1.0	1.2	-1.6	-1.4	-6.5	-5.7	0.5	-1.4	
09.3.2 Equipment for sport and open-air recreation	6.4399	121.3	118.4	-0.3	-0.5	0.2	1.6	0.7	-1.1	-2.9	-3.4	-2.2	-2.2	-2.4	
09.3.3 Gardens, plants and flowers	4.1861	128.0	127.2	-0.1	-0.3	0.3	1.1	-	0.2	0.5	0.5	0.3	-0.4	-0.6	
09.3.4/5 Pets, related products and services	11.3551	143.4	151.1	0.4	0.8	3.7	3.8	3.9	3.4	3.7	3.4	4.3	5.0	5.4	
<b>09.4 Recreational and cultural services</b>	33.9065	142.4	148.3	3.0	1.4	5.5	3.9	5.1	4.3	4.8	6.5	5.8	5.8	4.2	
09.4.1 Recreational and sporting services	11.3126	145.3	150.9	3.1	1.5	5.2	5.3	5.5	5.4	5.4	5.6	5.6	5.5	3.9	
09.4.2 Cultural services	22.5938	141.4	147.5	2.9	1.4	5.7	3.2	4.9	3.7	4.5	7.0	5.9	5.9	4.3	
<b>09.5 Books, newspapers and stationery</b>	8.7239	156.4	159.1	0.7	0.2	4.3	2.4	1.7	2.0	3.6	3.6	2.9	2.2	1.7	
09.5.1 Books	2.4509	150.4	147.0	0.9	-1.7	4.0	-1.9	-4.8	-2.7	0.8	2.3	1.6	0.4	-2.3	
09.5.2 Newspapers and periodicals	2.5846	202.0	218.2	2.4	2.1	10.3	10.4	9.4	8.6	9.8	9.5	8.3	8.3	8.0	
09.5.3/4 Misc. printed matter, stationery, drawing materials	3.6883	135.2	135.8	-0.3	0.3	1.2	0.6	1.5	1.3	1.8	1.0	0.6	-0.1	0.4	
<b>09.6 Package holidays</b>	29.2830	156.8	158.5	2.3	-1.3	4.6	4.3	4.1	4.1	4.5	4.4	4.5	4.7	1.0	
<b>10.0 Education</b>	27.0520	145.3	152.7	-	-	7.5	7.2	7.6	7.6	7.6	5.1	5.1	5.1	5.1	
<b>11.1 Catering services</b>	86.9276	147.4	154.2	0.6	0.5	4.2	4.3	4.6	4.7	4.8	4.9	4.7	4.7	4.6	
11.1.1 Restaurants & cafes	84.3285	149.0	155.6	0.6	0.5	4.1	4.1	4.4	4.6	4.7	4.8	4.5	4.5	4.5	
11.1.2 Canteens	2.5991	106.5	116.2	0.9	-0.1	5.3	9.4	9.3	9.7	9.9	9.6	9.2	10.1	9.1	
<b>11.2 Accommodation services</b>	22.5767	151.9	157.6	0.3	2.7	2.3	2.9	0.8	-0.9	-0.1	1.1	1.5	1.4	3.8	
<b>12.1 Personal care</b>	22.7135	124.4	126.8	0.2	0.7	1.3	1.0	1.4	1.2	1.2	1.3	2.2	1.4	1.9	
12.1.1 Hairdressing and personal grooming establishments	6.0690	143.4	149.2	1.0	1.2	4.3	4.3	4.3	4.2	4.2	4.4	4.2	3.8	4.1	
12.1.2/3 Appliances and products for personal care	16.6445	118.6	120.1	-	0.6	0.3	-	0.5	0.4	0.3	0.4	1.6	0.7	1.3	
<b>12.3 Personal effects (nec)</b>	8.9548	118.9	127.5	-0.3	-0.3	4.3	4.3	4.6	4.1	5.1	5.2	6.1	7.2	7.2	
12.3.1 Jewellery, clocks and watches	6.3186	126.4	138.8	-0.2	-0.3	5.6	6.0	6.3	5.9	6.9	6.9	8.6	10.0	9.8	
12.3.2 Other personal effects	2.6362	102.3	103.1	-0.5	-0.1	0.6	-0.2	-0.2	-0.4	0.6	0.8	-	0.4	0.8	
<b>12.4 Social protection</b>	11.9504	145.4	152.0	0.5	0.5	5.0	4.8	4.9	4.8	4.7	4.7	4.6	4.6	4.5	
<b>12.5 Insurance</b>	5.6271	174.0	175.7	0.9	-0.4	-3.9	-3.4	-2.8	-3.0	-2.6	1.9	1.9	2.4	1.0	
12.5.2 House contents insurance	0.6468	133.7	115.6	0.2	-0.5	-7.2	-8.4	-11.7	-14.7	-15.8	-15.8	-13.7	-12.9	-13.5	
12.5.3 Health insurance	3.2104	171.3	173.3	1.7	-1.2	-2.5	-2.5	-2.1	-2.1	-2.1	4.2	4.2	4.2	1.2	
12.5.4 Transport insurance	1.7698	172.7	182.4	-0.2	1.0	-6.1	-4.0	-1.5	-1.0	1.0	4.0	3.1	4.3	5.6	
<b>12.6 Financial services (nec)</b>	11.3015	91.9	90.6	0.1	-0.1	2.1	0.9	0.8	0.7	0.6	-1.1	-1.2	-1.2	-1.5	
12.6.2 Other financial services (nec)	11.3015	91.9	90.6	0.1	-0.1	2.1	0.9	0.8	0.7	0.6	-1.1	-1.2	-1.2	-1.5	
<b>12.7 Other services (nec)</b>	14.4069	108.3	111.8	0.2	0.9	3.4	3.4	3.6	3.5	3.4	2.7	2.6	2.5	3.2	

<sup>1</sup> As a direct result of the reduced availability of products due to the coronavirus (COVID-19) pandemic, some series are based on less than half of the number of quotes used in February 2020 (the most recent 'normal'

collection). To identify which series are affected, please consult the latest Consumer price inflation tables which can be located here: <https://www.ons.gov.uk/economy/inflationandpriceindices/datasets/consumer-priceinflation>, which includes notation to reflect the reduced coverage.

# D CPI: Detailed figures by division<sup>1,2</sup>

COICOP Division	Food and non-alcoholic beverages	Alcoholic beverages and tobacco	Clothing and footwear	Housing, water, electricity, gas & other fuels	Furniture, household equipment & routine maintenance	Health	Transport	Communication	Recreation and culture	Education	Restaurants and hotels	Miscellaneous goods and services	CPI (overall index)	
	01	02	03	04	05	06	07	08	09	10	11	12		
<b>Weights</b>														
2026	CHZR 109.6059	CHZS 37.1650	CHZT 56.7210	CHZU 131.2512	CHZV 53.8332	CHZW 26.1791	CHZX 140.9674	CHZY 24.3655	CHZZ 152.1489	CJUJ 34.2466	CJUV 138.6276	CJUW 94.8886	CHZQ 1 000	
<b>Monthly indices (2015=100)</b>														
2024	D7BU	D7BV	D7BW	D7BX	D7BY	D7BZ	D7C2	D7C3	D7C4	D7C5	D7C6	D7C7	D7BT	
Apr	135.6	147.1	119.5	137.0	125.3	133.2	135.0	134.8	129.4	135.2	144.1	119.7	133.5	
May	135.2	147.6	120.2	137.3	125.6	133.5	136.0	136.2	129.7	135.2	145.2	119.9	133.9	
Jun	135.5	147.0	118.8	137.6	125.8	133.9	135.7	135.7	129.9	135.2	146.5	119.9	134.1	
Jul	135.5	147.5	116.8	136.4	124.2	134.2	136.7	134.3	130.0	135.2	146.0	120.7	133.8	
Aug	135.8	147.6	118.0	136.6	124.9	134.8	138.4	134.2	130.5	135.2	145.0	121.0	134.3	
Sep	136.3	147.7	120.5	137.0	125.4	135.1	133.3	135.6	131.2	137.6	145.9	121.2	134.2	
Oct	136.5	148.1	121.8	140.6	126.0	135.9	133.5	135.8	131.1	142.0	146.1	121.2	135.0	
Nov	137.1	150.2	122.6	141.1	125.9	136.0	132.4	134.9	131.3	142.0	146.2	121.3	135.1	
Dec	137.8	149.9	121.9	141.4	127.7	136.6	133.8	135.8	131.2	142.0	146.1	121.5	135.6	
2025	Jan	139.0	152.6	117.9	142.6	124.8	137.7	133.2	135.8	131.7	145.3	144.7	121.8	135.4
Feb	139.3	154.1	117.6	142.8	126.1	138.0	134.3	136.1	131.8	145.3	146.2	122.1	136.0	
Mar	139.2	154.8	120.3	142.9	126.9	138.5	134.4	136.7	131.8	145.3	147.2	122.4	136.5	
Apr	140.2	155.5	118.9	147.7	124.7	139.0	139.5	142.6	133.4	145.3	148.0	122.7	138.2	
May	141.2	155.6	119.8	147.9	126.5	139.4	137.0	142.3	133.8	145.3	149.2	123.2	138.4	
Jun	141.6	156.4	119.4	148.0	127.0	139.8	138.0	142.4	134.2	145.3	150.3	123.2	138.9	
Jul	142.2	155.9	117.1	146.5	125.0	138.8	141.1	142.5	134.3	145.3	150.9	123.4	139.0	
Aug	142.8	156.3	118.2	146.7	125.9	139.5	141.7	142.4	134.7	145.3	150.5	123.7	139.3	
Sep	142.5	156.3	121.0	146.9	125.9	139.8	138.5	141.9	134.7	147.5	151.7	123.7	139.3	
Oct	143.2	156.8	122.2	147.9	126.4	139.6	138.5	141.7	134.9	152.7	151.6	124.0	139.8	
Nov	142.9	156.1	121.8	148.3	125.5	139.4	137.3	141.3	135.0	152.7	151.3	123.9	139.5	
Dec	144.1	157.7	122.0	148.4	127.0	139.5	139.2	141.4	134.8	152.7	151.7	124.2	140.1	
2026	Jan	143.9	159.7	117.9	149.1	124.2	141.9	136.7	142.0	135.1	152.7	150.6	124.5	139.5
Feb	143.9	159.6	118.6	149.3	126.3	142.4	137.5	141.9	135.1	152.7	152.1	125.2	140.1	
Mar	144.4	159.9	119.3	150.5	126.4	142.8	140.7	142.3	135.4	152.7	153.1	125.4	141.0	
Apr	144.5	159.9	119.8	149.8	125.4	142.4	145.8	149.0	135.7	152.7	154.6	125.9	142.1	
<b>Percentage change on a year earlier</b>														
2024	D7G8	D7G9	D7GA	D7GB	D7GC	D7GD	D7GE	D7GF	D7GG	D7GH	D7GI	D7GJ	D7G7	
Apr	2.9	8.1	3.7	-4.9	-1.0	6.7	0.1	4.0	4.4	4.5	6.0	3.6	2.3	
May	1.7	7.8	3.0	-4.8	-1.9	6.2	0.5	4.1	3.9	4.5	5.8	3.1	2.0	
Jun	1.5	7.3	1.6	-4.7	-1.6	6.3	0.9	2.9	3.9	4.5	6.2	2.9	2.0	
Jul	1.5	7.3	2.1	-1.5	-1.7	5.7	0.2	4.5	3.7	4.5	4.9	3.5	2.2	
Aug	1.3	5.8	1.6	-1.6	-1.3	5.5	1.3	4.1	4.0	4.5	4.3	3.3	2.2	
Sep	1.9	4.9	0.8	-1.7	-1.0	5.2	-2.2	5.2	3.8	4.4	4.1	3.3	1.7	
Oct	1.9	5.3	1.0	2.9	-0.5	5.6	-1.9	4.6	3.0	5.0	4.3	2.9	2.3	
Nov	2.0	6.9	2.0	3.0	-0.4	5.5	-0.9	4.8	3.6	5.0	4.0	3.0	2.6	
Dec	2.0	5.3	1.1	3.1	-0.3	5.6	-0.6	6.1	3.4	5.0	3.4	3.5	2.5	
2025	Jan	3.3	4.9	1.8	2.1	0.5	5.0	1.7	5.9	3.8	7.5	3.3	2.8	3.0
Feb	3.3	5.7	-0.6	1.9	0.2	5.1	1.8	7.3	3.4	7.5	3.4	3.0	2.8	
Mar	3.0	5.3	1.1	1.8	0.5	5.0	1.2	6.0	2.4	7.5	3.0	3.1	2.6	
Apr	3.4	5.7	-0.4	7.8	-0.5	4.3	3.3	5.8	3.1	7.5	2.7	2.5	3.5	
May	4.4	5.4	-0.3	7.7	0.8	4.5	0.7	4.5	3.2	7.5	2.8	2.8	3.4	
Jun	4.5	6.4	0.5	7.5	0.9	4.4	1.7	4.9	3.3	7.5	2.6	2.7	3.6	
Jul	4.9	5.7	0.3	7.4	0.7	3.5	3.2	6.1	3.4	7.5	3.4	2.2	3.8	
Aug	5.1	5.9	0.2	7.4	0.8	3.4	2.4	6.1	3.2	7.5	3.8	2.3	3.8	
Sep	4.5	5.8	0.5	7.3	0.4	3.5	3.8	4.7	2.7	7.2	3.9	2.0	3.8	
Oct	4.9	5.9	0.3	5.2	0.3	2.7	3.8	4.3	2.9	7.6	3.8	2.3	3.6	
Nov	4.2	4.0	-0.6	5.1	-0.3	2.6	3.7	4.8	2.9	7.6	3.5	2.1	3.2	
Dec	4.5	5.2	-	4.9	-0.6	2.1	4.0	4.2	2.7	7.6	3.8	2.2	3.4	
2026	Jan	3.6	4.6	-	4.5	-0.5	3.1	2.7	4.6	2.6	5.1	4.1	2.2	3.0
Feb	3.3	3.6	0.9	4.6	0.1	3.1	2.4	4.3	2.5	5.1	4.0	2.6	3.0	
Mar	3.7	3.3	-0.8	5.3	-0.4	3.1	4.7	4.1	2.8	5.1	4.0	2.5	3.3	
Apr	3.0	2.8	0.7	1.4	0.5	2.4	4.5	4.5	1.7	5.1	4.4	2.6	2.8	

Key: - zero or negligible

Source: Office for National Statistics

1 From the release of January consumer price inflation data on 16 February 2016, CPIH and CPI indices have been re-referenced and published with 2015=100. Full historic series for each of the re-referenced indices are available for users to view or download. Regular re-referencing of indices is methodological good practice as it avoids rounding issues that can arise from small index values. Please note that re-referencing does not impact on published inflation rates, although when using the indices to calculate inflation rates, it is important to use indices that are referenced on the same year. Re-referencing does not impact on RPI. For more information, please contact [cpi@ons.gsi.gov.uk](mailto:cpi@ons.gsi.gov.uk).

2 More detailed CPIH, CPI and RPI data are available at: <http://www.ons.gov.uk>.

# D1 CPIH: Detailed figures by division<sup>1, 2</sup>

	Food and non-alcoholic beverages	Alcoholic beverages and tobacco	Clothing and footwear	Housing, water, electricity, gas & other fuels	Furniture, household equipment & routine maintenance	Health	Transport	Communication	Recreation and culture	Education	Restaurants and hotels	Miscellaneous goods and services	CPIH (overall index)
COICOP Division	1	2	3	4	5	6	7	8	9	10	11	12	
<b>Weights</b>													
2026	L5CZ 86.5796	L5D2 29.3573	L5D3 44.8049	L5D4 313.7606	L5D5 42.5238	L5D6 20.6793	L5D7 111.3525	L5D8 19.2467	L5D9 120.1850	L5DA 27.0520	L5DB 109.5043	L5DC 74.9541	L5CY 1 000
<b>Monthly indices (2015=100)</b>													
2024 Apr	L523 135.9	L524 147.1	L525 119.5	L5PG 130.9	L527 125.6	L528 133.5	L529 135.0	L52A 134.9	L52B 129.8	L52C 135.2	L52D 144.3	L52E 119.6	132.2
May	135.6	147.6	120.3	131.4	125.9	133.8	136.0	136.3	130.0	135.2	145.3	119.8	132.7
Jun	135.8	147.0	118.9	132.0	126.1	134.2	135.7	135.8	130.2	135.2	146.7	119.8	133.0
Jul	135.9	147.6	116.8	132.1	124.5	134.5	136.7	134.4	130.3	135.2	146.1	120.6	132.9
Aug	136.2	147.6	118.0	132.6	125.2	135.1	138.4	134.3	130.9	135.2	145.2	120.9	133.4
Sep	136.7	147.7	120.5	133.2	125.7	135.4	133.3	135.7	131.6	137.6	146.0	121.1	133.5
Oct	136.9	148.1	121.8	135.0	126.3	136.2	133.5	135.9	131.5	142.0	146.3	121.1	134.3
Nov	137.5	150.2	122.6	135.7	126.2	136.3	132.4	135.0	131.7	142.0	146.4	121.2	134.6
Dec	138.2	149.9	122.0	136.3	128.1	136.9	133.8	135.9	131.6	142.0	146.2	121.4	135.1
2025 Jan	139.4	152.6	118.0	137.0	125.1	138.0	133.1	135.9	132.0	145.3	144.8	121.6	135.1
Feb	139.7	154.1	117.6	137.4	126.4	138.4	134.3	136.2	132.2	145.3	146.4	121.9	135.6
Mar	139.6	154.8	120.3	137.7	127.2	138.9	134.4	136.8	132.1	145.3	147.3	122.3	136.1
Apr	140.6	155.5	119.0	140.1	125.0	139.3	139.5	142.7	133.8	145.3	148.2	122.6	137.7
May	141.6	155.6	119.9	140.5	126.9	139.8	137.0	142.5	134.1	145.3	149.3	123.1	138.0
Jun	142.0	156.4	119.4	140.8	127.3	140.1	138.0	142.5	134.6	145.3	150.5	123.0	138.4
Jul	142.6	155.9	117.2	140.2	125.3	139.2	141.1	142.6	134.7	145.3	151.0	123.2	138.5
Aug	143.2	156.3	118.3	140.6	126.2	139.8	141.7	142.5	135.1	145.3	150.7	123.6	138.9
Sep	142.9	156.3	121.1	141.0	126.2	140.1	138.4	142.1	135.1	147.5	151.8	123.5	138.9
Oct	143.6	156.8	122.2	141.7	126.7	139.9	138.5	141.8	135.3	152.7	151.8	123.8	139.5
Nov	143.3	156.1	121.9	142.3	125.8	139.7	137.3	141.4	135.4	152.7	151.5	123.7	139.4
Dec	144.4	157.7	122.0	142.5	127.3	139.8	139.2	141.6	135.2	152.7	151.8	124.1	139.9
2026 Jan	144.3	159.7	118.0	142.8	124.5	142.3	136.7	142.1	135.5	152.7	150.7	124.3	139.4
Feb	144.3	159.6	118.7	143.2	126.6	142.7	137.5	142.0	135.5	152.7	152.2	125.1	140.0
Mar	144.8	159.9	119.4	143.7	126.7	143.1	140.7	142.5	135.8	152.7	153.2	125.3	140.8
Apr	144.9	159.9	119.9	144.3	125.7	142.7	145.7	149.1	136.1	152.7	154.7	125.8	141.8
<b>Percentage change on a year earlier</b>													
2024 Apr	L55P 2.9	L55Q 8.0	L55R 3.7	L55S 2.0	L55T -0.9	L55U 6.8	L55V -0.1	L55W 4.1	L55X 4.6	L55Y 4.5	L55Z 6.1	L562 3.4	L55O 3.0
May	1.7	7.8	3.0	2.1	-1.8	6.3	0.3	4.2	4.1	4.5	5.8	2.9	2.8
Jun	1.5	7.3	1.6	2.3	-1.6	6.4	0.7	3.0	4.1	4.5	6.3	2.8	2.8
Jul	1.5	7.2	2.0	3.7	-1.6	5.9	0.1	4.5	3.8	4.5	4.9	3.4	3.1
Aug	1.3	5.7	1.6	3.7	-1.3	5.6	1.2	4.1	4.1	4.5	4.4	3.2	3.1
Sep	1.8	4.8	0.8	3.8	-1.0	5.2	-2.4	5.2	3.9	4.4	4.1	3.2	2.6
Oct	1.9	5.2	1.0	5.5	-0.5	5.6	-2.0	4.7	3.1	5.0	4.3	2.9	3.2
Nov	2.0	6.8	2.0	5.8	-0.5	5.5	-1.1	4.8	3.6	5.0	4.0	3.0	3.5
Dec	2.0	5.3	1.1	6.0	-0.3	5.6	-0.6	6.1	3.4	5.0	3.4	3.5	3.5
2025 Jan	3.3	4.9	1.8	5.6	0.5	5.0	1.7	5.9	3.8	7.5	3.3	2.8	3.9
Feb	3.3	5.7	-0.6	5.3	0.2	5.1	1.8	7.3	3.4	7.5	3.4	3.0	3.7
Mar	3.0	5.3	1.1	5.1	0.5	5.0	1.2	6.0	2.4	7.5	3.0	3.1	3.4
Apr	3.4	5.7	-0.4	7.0	-0.5	4.3	3.3	5.8	3.1	7.5	2.7	2.5	4.1
May	4.4	5.4	-0.3	6.9	0.8	4.5	0.7	4.5	3.2	7.5	2.8	2.8	4.0
Jun	4.5	6.4	0.5	6.7	0.9	4.4	1.7	4.9	3.3	7.5	2.6	2.7	4.1
Jul	4.9	5.7	0.3	6.2	0.7	3.5	3.2	6.1	3.4	7.5	3.4	2.2	4.2
Aug	5.1	5.9	0.2	6.0	0.8	3.4	2.4	6.1	3.2	7.5	3.8	2.3	4.1
Sep	4.5	5.8	0.5	5.9	0.4	3.5	3.8	4.7	2.7	7.2	3.9	2.0	4.1
Oct	4.9	5.9	0.3	5.0	0.3	2.7	3.8	4.3	2.9	7.6	3.8	2.3	3.8
Nov	4.2	4.0	-0.6	4.8	-0.3	2.6	3.7	4.8	2.9	7.6	3.5	2.1	3.5
Dec	4.5	5.2	-	4.6	-0.6	2.1	4.0	4.2	2.7	7.6	3.8	2.2	3.6
2026 Jan	3.6	4.6	-	4.2	-0.5	3.1	2.7	4.6	2.6	5.1	4.1	2.2	3.2
Feb	3.3	3.6	0.9	4.2	0.1	3.1	2.4	4.3	2.5	5.1	4.0	2.6	3.2
Mar	3.7	3.3	-0.8	4.3	-0.4	3.1	4.7	4.1	2.8	5.1	4.0	2.5	3.4
Apr	3.0	2.8	0.7	3.0	0.5	2.4	4.5	4.5	1.7	5.1	4.4	2.6	3.0

Key: - zero or negligible

Source: Office for National Statistics

1 From the release of January consumer price inflation data on 16 February 2016, CPIH & CPI indices have been re-referenced and published with 2015=100. Full historic series for each of the re-referenced indices are available for users to view or download. Regular re-referencing of indices is methodological good practice as it avoids rounding issues that can arise from small index values. Please note that re-referencing does not impact on published inflation rates, although when using the indices to calculate inflation rates, it is important to use indices that are referenced on the same year. Re-referencing does not impact on RPI. For more information, please contact [cpi@ons.gsi.gov.uk](mailto:cpi@ons.gsi.gov.uk).

2 More detailed CPIH, CPI and RPI data are available at: <http://www.ons.gsi.gov.uk>.

# E CPI: Detailed goods and services breakdown<sup>1</sup>

	Weights	Index (2015=100)						Percentage change over 12 months						Percentage change over	
		2026	2025					2025	2025	2026	2026	2026	2026	2026	1 month
			Nov	Dec	Jan	Feb	Mar								
<b>CPI (overall index)</b>	1 000	139.5	140.1	139.5	140.1	141.0	142.1	3.2	3.4	3.0	3.0	3.3	2.8	0.7	
<b>All goods</b>	481.6334	133.7	134.2	133.4	133.8	135.0	135.8	2.1	2.2	1.6	1.6	2.1	2.4	0.6	
<b>Food, alcoholic beverages &amp; tobacco</b>	146.7709	146.4	147.6	148.0	147.9	148.4	148.4	4.2	4.7	3.8	3.4	3.6	3.0	-	
Processed food & non-alcoholic beverages	61.9833	147.9	149.2	148.8	148.4	149.0	149.0	4.6	5.0	3.7	3.1	3.4	2.6	0.1	
Non-processed food	47.6226	136.8	137.7	137.9	138.3	138.8	138.8	3.7	4.0	3.4	3.6	4.1	3.6	-	
Seasonal food	28.5131	138.5	139.6	139.9	140.9	141.2	141.3	1.8	2.1	2.2	2.7	3.0	3.5	0.1	
Meat	19.1095	135.4	136.0	136.0	135.8	136.2	136.1	6.5	6.9	5.2	5.1	5.8	3.6	-0.1	
Alcoholic beverages & tobacco	37.1650	156.1	157.7	159.7	159.6	159.9	159.9	4.0	5.2	4.6	3.6	3.3	2.8	-	
<b>Industrial goods</b>	334.8625	128.3	128.6	127.3	128.0	129.3	130.4	1.2	1.1	0.7	0.8	1.5	2.2	0.8	
Energy	58.3510	153.5	154.3	153.6	152.8	161.0	166.7	1.9	1.7	0.2	-1.0	4.9	7.1	3.5	
Electricity, gas & miscellaneous energy	31.1670	174.3	174.3	176.3	176.1	176.6	164.3	2.5	2.4	2.4	2.3	2.6	-8.9	-7.0	
Liquid fuels, vehicle fuels & lubricants	27.1840	125.0	126.4	123.5	122.3	136.1	155.8	1.1	1.0	-2.3	-4.6	7.5	26.0	14.5	
Non-energy industrial goods	276.5115	123.7	123.9	122.5	123.4	123.6	123.9	1.1	1.0	0.8	1.3	0.8	1.1	0.2	
Clothing & footwear goods	56.1749	121.4	121.5	117.4	118.1	118.8	119.3	-0.7	-0.1	-0.1	0.8	-0.9	0.7	0.4	
Housing goods	56.4895	127.1	128.7	126.0	127.9	128.0	128.2	1.4	1.2	1.4	1.9	1.4	1.3	0.2	
Household goods	49.6638	124.1	125.8	122.8	124.9	125.0	123.9	-0.7	-0.9	-0.8	-0.1	-0.7	0.3	-0.9	
Water supply; materials for maintenance & repair	6.8256	157.4	157.9	158.1	158.2	158.0	170.2	20.8	20.9	21.0	21.2	21.3	8.1	7.8	
Medical products, appliances & equipment	9.3601	131.6	131.2	132.4	132.9	133.3	132.8	3.0	2.0	2.2	2.4	2.5	1.9	-0.4	
Vehicles, spare parts & accessories	50.0571	126.1	126.3	126.3	126.3	126.7	126.8	1.4	1.8	1.6	1.5	1.1	0.6	0.1	
Recreational goods	72.0224	123.3	122.3	122.3	122.6	122.6	122.9	1.5	0.7	-0.4	-0.2	0.2	0.6	0.3	
Audio-visual goods	15.7568	95.4	92.3	92.9	94.7	92.0	94.6	2.7	-1.8	-1.8	-2.4	-4.3	0.1	2.8	
Other recreational goods	56.2656	132.7	132.6	132.3	132.1	133.0	132.4	1.2	1.4	0.0	0.4	1.4	0.8	-0.5	
Miscellaneous goods	32.4076	119.7	120.4	120.1	122.1	122.4	122.7	1.7	1.9	2.0	3.1	2.9	3.3	0.3	
<b>All services</b>	518.3666	144.4	145.0	144.6	145.3	146.1	147.4	4.4	4.5	4.4	4.3	4.5	3.2	0.9	
<b>Housing services</b>	97.4316	136.0	136.1	136.5	136.9	137.1	138.4	4.8	4.5	4.2	4.2	4.1	3.4	1.0	
Actual rentals for housing	84.2719	134.2	134.3	134.7	135.1	135.4	136.3	3.8	3.6	3.1	3.2	3.1	3.5	0.7	
Primary housing services	8.9903	147.9	147.7	147.7	147.8	147.9	153.5	15.5	15.4	15.4	15.7	15.8	2.7	3.8	
Other housing services	4.1694	138.8	138.4	138.5	139.7	139.9	140.2	4.4	3.7	3.7	3.4	3.2	3.1	0.2	
<b>Travel &amp; transport services</b>	66.7819	155.8	159.4	155.0	157.3	159.5	161.7	6.5	7.1	5.9	6.3	7.5	0.2	1.4	
Services for personal transport equipment	36.7402	162.0	162.2	162.5	163.1	164.8	167.9	9.2	9.1	8.5	8.9	9.8	2.0	1.9	
Transport services	27.8012	148.5	156.0	145.5	150.3	153.1	154.3	4.6	5.4	2.7	3.5	5.1	-2.4	0.8	
Transport insurance	2.2405	180.5	180.2	184.1	180.1	180.5	182.4	-1.0	1.0	4.0	3.1	4.3	5.6	1.0	
<b>Communication</b>	24.3655	141.3	141.4	142.0	141.9	142.3	149.0	4.8	4.2	4.6	4.3	4.1	4.5	4.7	
<b>Recreational &amp; personal services</b>	226.9834	151.8	152.2	151.8	152.6	153.5	154.6	3.8	4.1	4.6	4.4	4.4	3.8	0.7	
Package holidays & accommodation	65.6521	161.5	161.5	159.7	160.7	162.0	162.7	1.8	2.5	3.0	3.2	3.3	2.3	0.5	
Other recreational & personal services	161.3312	149.3	149.8	150.0	150.7	151.4	152.6	4.6	4.8	5.3	4.9	4.9	4.5	0.8	
Catering services	110.0465	151.0	151.5	151.2	152.6	153.2	154.0	4.7	4.8	4.9	4.7	4.7	4.6	0.5	
Non-catering recreational & personal services	51.2847	144.4	145.1	146.2	145.5	146.4	148.4	4.3	4.8	6.2	5.6	5.5	4.2	1.4	
<b>Miscellaneous &amp; other services</b>	102.8043	133.8	133.9	134.6	134.7	134.9	135.1	4.1	4.0	3.3	3.3	3.2	3.1	0.1	
Miscellaneous services	51.7386	120.5	120.6	121.1	121.2	121.4	121.8	2.6	2.5	2.3	2.2	2.1	2.1	0.3	
Medical services	16.8190	149.1	149.5	152.8	153.2	153.7	153.3	2.3	2.2	3.6	3.6	3.4	2.7	-0.3	
Education	34.2466	152.7	152.7	152.7	152.7	152.7	152.7	7.6	7.6	5.1	5.1	5.1	5.1	-	
<b>Special aggregates</b>															
Durables	99.8421	120.9	121.4	120.1	121.6	121.4	121.5	1.1	0.8	0.4	0.9	0.1	0.8	0.1	
Semi-durables	105.9001	121.1	120.9	118.3	118.7	119.6	119.4	-0.3	-0.2	-0.5	0.0	-0.3	0.5	-0.1	
Non-durables	70.7693	132.9	133.4	133.8	134.5	134.4	135.7	3.3	3.1	3.3	3.7	3.5	2.5	1.0	
Seasonal food	28.5131	138.5	139.6	139.9	140.9	141.2	141.3	1.8	2.1	2.2	2.7	3.0	3.5	0.1	
Non-seasonal food	68.7843	143.7	145.1	144.7	144.2	144.6	144.6	4.8	5.3	4.0	3.4	3.7	2.7	-	
Energy, food, alcoholic beverages & tobacco	205.1219	149.0	150.1	150.2	150.0	152.6	154.2	3.5	3.8	2.8	2.1	4.0	4.2	1.0	
Energy & unprocessed food	105.9736	146.5	147.3	147.1	146.8	151.4	154.3	2.7	2.7	1.6	1.0	4.6	5.5	2.0	
Energy & seasonal food	86.8641	148.8	149.7	149.3	149.1	154.6	158.4	1.8	1.8	0.8	0.2	4.3	6.0	2.4	
Tobacco	16.2271	190.4	196.1	197.5	200.9	201.9	202.6	4.2	6.5	6.2	6.7	6.7	6.7	0.4	
Housing, water, electricity, gas & other fuels	131.2512	148.3	148.4	149.1	149.3	150.5	149.8	5.1	4.9	4.5	4.6	5.3	1.4	-0.4	
Education, health & social protection <sup>2</sup>	75.5544	147.0	147.1	148.1	148.4	148.6	148.6	5.1	4.9	4.2	4.2	4.2	3.9	-	
<b>All items excluding</b>															
Energy <sup>3</sup>	941.6490	138.1	138.7	138.1	138.7	139.2	140.0	3.3	3.5	3.2	3.2	3.2	2.5	0.6	
Energy, food, alcoholic beverages & tobacco	794.8781	136.3	136.7	135.9	136.7	137.2	138.2	3.2	3.2	3.1	3.2	3.1	2.5	0.7	
Energy & unprocessed food	894.0264	138.1	138.7	138.0	138.7	139.2	140.0	3.3	3.5	3.2	3.2	3.2	2.5	0.6	
Seasonal food	971.4869	139.5	140.1	139.4	140.0	141.0	142.0	3.3	3.4	3.0	3.0	3.3	2.8	0.8	
Energy & seasonal food	913.1359	138.0	138.6	137.9	138.6	139.1	139.9	3.4	3.5	3.2	3.3	3.2	2.5	0.6	
Tobacco	983.7729	138.6	139.1	138.4	139.0	139.9	141.0	3.2	3.3	3.0	2.9	3.3	2.7	0.8	
Alcoholic beverages & tobacco	962.8350	138.9	139.5	138.7	139.4	140.3	141.4	3.2	3.3	3.0	3.0	3.3	2.8	0.8	
Liquid fuels, vehicle fuels & lubricants	972.8160	140.0	140.5	140.0	140.6	141.1	141.6	3.3	3.4	3.2	3.2	3.2	2.2	0.3	
Housing, water, electricity, gas & other fuels	868.7488	137.8	138.5	137.7	138.3	139.2	140.5	3.0	3.1	2.8	2.8	3.0	3.0	0.9	
Education, health & social protection	924.4456	139.0	139.7	138.9	139.5	140.5	141.6	3.1	3.2	2.9	2.9	3.2	2.7	0.8	

**Key:** - zero or negligible

<sup>1</sup> For further information on the composition of the indices shown, see 'The Consumer Prices Index: Goods and Services Indices and Special Aggregates', which can be downloaded from: <http://webarchive.nationalarchives.gov.uk/20161015160709/http://ons.gov.uk/>

<sup>2</sup> The coverage of this special aggregate has changed extensively since January 2000, when Social protection was first included and extensions to the Education and Health divisions also took effect. Health was further extended with effect from January 2001.

<sup>3</sup> Energy includes electricity, gas and other fuels, and fuels and lubricants.

Source: Office for National Statistics

# E1 CPIH: Detailed goods and services breakdown<sup>1</sup>

	Weights	Index (2015=100)						Percentage change over 12 months						Percentage change over 1 month
								Percentage change over 12 months						2026 Apr
		2026	2025 Nov	2025 Dec	2026 Jan	2026 Feb	2026 Mar	2026 Apr	2025 Nov	2025 Dec	2026 Jan	2026 Feb	2026 Mar	2026 Apr
<b>CPIH (overall index)</b>	1 000	139.4	139.9	139.4	140.0	140.8	141.8	3.5	3.6	3.2	3.2	3.4	3.0	0.8
<b>All goods</b>	380.4504	133.8	134.3	133.5	133.9	135.1	135.9	2.1	2.2	1.6	1.6	2.1	2.4	0.6
<b>Food, alcoholic beverages &amp; tobacco</b>	115.9368	146.8	148.0	148.4	148.4	148.8	148.8	4.2	4.7	3.8	3.4	3.6	3.0	-
Processed food & non-alcoholic beverages	48.9617	148.8	150.1	149.8	149.4	149.9	150.0	4.6	5.0	3.7	3.1	3.4	2.6	0.1
Non-processed food	37.6179	136.5	137.4	137.6	138.0	138.4	138.4	3.7	4.0	3.4	3.6	4.1	3.6	-
Seasonal food	22.523	138.0	139.0	139.3	140.2	140.6	140.7	1.8	2.1	2.2	2.7	3.0	3.5	0.1
Meat	15.0949	135.4	136.0	136.0	135.8	136.2	136.1	6.5	6.9	5.2	5.1	5.8	3.6	-0.1
Alcoholic beverages & tobacco	29.3573	156.1	157.7	159.7	159.6	159.9	159.9	4.0	5.2	4.6	3.6	3.3	2.8	-
<b>Industrial goods</b>	264.5136	128.3	128.6	127.3	127.9	129.3	130.4	1.2	1.1	0.7	0.8	1.5	2.2	0.8
<b>Energy</b>	46.0924	152.7	153.5	152.8	152.0	160.2	165.8	1.9	1.7	0.2	-1.0	4.9	7.1	3.5
Electricity, gas & miscellaneous energy	24.6193	173.5	173.5	175.6	175.4	175.9	163.5	2.5	2.4	2.4	2.3	2.6	-8.9	-7.0
Liquid fuels, vehicle fuels & lubricants	21.4731	125.6	126.9	124.1	122.9	136.7	156.5	1.1	1.0	-2.3	-4.6	7.5	26.0	14.5
<b>Non-energy industrial goods</b>	218.4211	123.9	124.2	122.7	123.6	123.9	124.2	1.1	1.0	0.8	1.3	0.8	1.1	0.2
Clothing & footwear goods	44.3735	121.3	121.5	117.4	118.1	118.8	119.3	-0.7	-0.1	-0.1	0.8	-0.9	0.7	0.4
Housing goods	44.6220	127.6	129.1	126.5	128.4	128.4	128.6	1.4	1.2	1.4	1.9	1.4	1.3	0.2
Household goods	39.2303	124.3	126.0	123.0	125.2	125.2	124.2	-0.7	-0.9	-0.8	-0.1	-0.7	0.3	-0.9
Water supply; materials for maintenance & repair	5.3917	160.5	160.9	161.1	161.2	161.0	173.5	20.8	20.9	21.0	21.2	21.3	8.1	7.8
Medical products, appliances & equipment	7.3937	131.7	131.3	132.5	133.0	133.4	132.9	3.0	2.0	2.2	2.4	2.5	1.9	-0.4
Vehicles, spare parts & accessories	39.5410	125.3	125.5	125.5	125.5	125.9	126.0	1.4	1.8	1.6	1.5	1.1	0.6	0.1
Recreational goods	56.8917	124.0	123.0	122.9	123.3	123.2	123.5	1.5	0.7	-0.4	-0.2	0.2	0.6	0.3
Audio-visual goods	12.4465	96.9	93.8	94.3	96.2	93.5	96.1	2.7	-1.8	-1.8	-2.4	-4.3	0.1	2.8
Other recreational goods	44.4452	133.0	132.8	132.5	132.3	133.3	132.7	1.2	1.4	0.0	0.4	1.4	0.8	-0.5
Miscellaneous goods	25.5993	119.8	120.6	120.2	122.3	122.5	122.9	1.7	1.9	2.0	3.1	2.9	3.3	0.3
<b>All services</b>	619.5496	142.3	142.9	142.6	143.2	143.8	145.1	4.5	4.5	4.3	4.2	4.3	3.4	0.9
<b>Housing services</b>	287.0459	137.8	138.1	138.3	138.7	138.9	140.1	4.7	4.4	4.1	4.1	4.0	3.7	0.9
Actual rentals for housing	66.5678	134.2	134.3	134.7	135.1	135.4	136.3	3.8	3.6	3.1	3.2	3.1	3.5	0.7
Owner occupiers' housing	181.4333	136.5	136.8	137.0	137.4	137.7	137.9	4.5	4.2	3.9	3.8	3.6	3.6	0.2
Primary housing services	35.7514	151.1	151.0	151.0	151.1	151.1	158.3	7.2	7.2	7.2	7.3	7.3	4.6	4.8
Other housing services	3.2935	138.7	138.3	138.5	139.6	139.9	140.2	4.4	3.7	3.7	3.4	3.2	3.1	0.2
<b>Travel &amp; transport services</b>	52.7522	157.0	160.6	156.2	158.5	160.7	162.9	6.5	7.1	5.9	6.3	7.5	0.2	1.4
Services for personal transport equipment	29.0217	161.9	162.1	162.4	163.0	164.7	167.8	9.2	9.1	8.5	8.9	9.8	2.0	1.9
Transport services	21.9607	153.3	161.0	150.2	155.1	158.0	159.3	4.6	5.4	2.7	3.5	5.1	-2.4	0.8
Transport insurance	1.7698	180.5	180.2	184.1	180.1	180.5	182.4	-1.0	1.0	4.0	3.1	4.3	5.6	1.0
<b>Communication</b>	19.2467	141.4	141.6	142.1	142.0	142.5	149.1	4.8	4.2	4.6	4.3	4.1	4.5	4.7
<b>Recreational &amp; personal services</b>	179.2980	151.9	152.3	151.9	152.7	153.6	154.7	3.8	4.1	4.6	4.4	4.4	3.8	0.7
Package holidays & accommodation	51.8597	161.6	161.7	159.9	160.8	162.1	162.9	1.8	2.5	3.0	3.2	3.3	2.3	0.5
Other recreational & personal services	127.4383	149.4	150.0	150.1	150.9	151.6	152.8	4.6	4.8	5.3	4.9	4.9	4.5	0.8
Catering services	86.9276	151.2	151.7	151.3	152.8	153.4	154.2	4.7	4.8	4.9	4.7	4.7	4.6	0.5
Non-catering recreational & personal services	40.5107	144.4	145.1	146.2	145.4	146.4	148.4	4.3	4.8	6.2	5.6	5.5	4.2	1.4
<b>Miscellaneous &amp; other services</b>	81.2068	133.7	133.8	134.6	134.7	134.9	135.0	4.1	4.0	3.3	3.3	3.2	3.1	0.1
Miscellaneous services	40.8692	120.3	120.4	120.8	120.9	121.2	121.6	2.6	2.5	2.3	2.2	2.1	2.1	0.3
Medical services	13.2856	148.7	149.1	152.4	152.8	153.3	152.8	2.3	2.2	3.6	3.6	3.4	2.7	-0.3
Education	27.0520	152.7	152.7	152.7	152.7	152.7	152.7	7.6	7.6	5.1	5.1	5.1	5.1	-
<b>Special aggregates</b>														
Durables	78.8670	120.9	121.4	120.1	121.6	121.4	121.5	1.1	0.8	0.4	0.9	0.1	0.8	0.1
Semi-durables	83.6523	121.4	121.2	118.7	119.1	119.9	119.8	-0.3	-0.2	-0.5	0.0	-0.3	0.5	-0.1
Non-durables	55.9019	133.2	133.8	134.1	134.8	134.8	136.1	3.3	3.1	3.3	3.7	3.5	2.5	1.0
Seasonal food	22.523	138.0	139.0	139.3	140.2	140.6	140.7	1.8	2.1	2.2	2.7	3.0	3.5	0.1
Non-seasonal food	54.3339	144.6	146.0	145.6	145.1	145.6	145.5	4.8	5.3	4.0	3.4	3.7	2.7	-
Energy, food, alcoholic beverages & tobacco	162.0293	149.0	150.1	150.2	149.9	152.5	154.1	3.5	3.8	2.8	2.1	4.0	4.2	1.0
Energy & unprocessed food	83.7103	146.3	147.2	146.9	146.7	151.2	154.2	2.7	2.7	1.6	1.0	4.6	5.5	2.0
Energy & seasonal food	68.6154	148.5	149.4	149.1	148.9	154.3	158.0	1.8	1.8	0.8	0.2	4.3	6.0	2.4
Tobacco	12.8180	190.4	196.1	197.5	200.9	201.9	202.6	4.2	6.5	6.2	6.7	6.7	6.7	0.4
Housing, water, electricity, gas & other fuels	313.7606	142.3	142.5	142.8	143.2	143.7	144.3	4.8	4.6	4.2	4.2	4.3	3.0	0.4
Education, health & social protection	59.6817	147.2	147.3	148.3	148.6	148.8	148.8	5.1	4.9	4.2	4.2	4.2	3.9	-
All items excluding														
Energy <sup>2</sup>	953.9076	138.3	138.9	138.4	139.0	139.5	140.3	3.6	3.7	3.4	3.4	3.4	2.8	0.6
Energy, food, alcoholic beverages & tobacco	837.9707	136.9	137.3	136.7	137.4	137.9	138.9	3.5	3.5	3.3	3.4	3.3	2.8	0.7
Energy & unprocessed food	916.2897	138.4	138.9	138.4	139.0	139.4	140.4	3.6	3.7	3.4	3.4	3.3	2.8	0.8
Seasonal food	977.477	139.4	139.9	139.4	139.9	140.7	141.8	3.6	3.6	3.3	3.2	3.4	3.0	0.7
Energy & seasonal food	931.3846	138.3	138.8	138.3	138.9	139.4	140.3	3.7	3.7	3.4	3.4	3.4	2.8	0.8
Tobacco	987.1820	138.6	139.1	138.6	139.1	139.9	141.0	3.5	3.5	3.2	3.2	3.4	2.9	0.8
Alcoholic beverages & tobacco	970.6427	138.8	139.3	138.8	139.4	140.2	141.3	3.5	3.5	3.2	3.2	3.4	3.0	0.4
Liquid fuels, vehicle fuels & lubricants	978.5269	139.7	140.2	139.8	140.4	140.9	141.5	3.6	3.6	3.4	3.4	3.3	2.5	0.6
Housing, water, electricity, gas & other fuels	686.2394	138.1	138.7	137.9	138.5	139.4	140.7	3.0	3.1	2.8	2.8	3.0	3.0	0.9
Owner occupiers' housing costs	818.5667	140.1	140.6	140.0	140.6	141.5	142.8	3.3	3.4	3.1	3.1	3.4	2.9	0.9
Council tax and rates	789.9169	139.0	139.6	139.1	139.7	140.5	141.4	3.5	3.5	3.2	3.1	3.4	2.9	0.6
Owner occupiers' housing costs and council tax and rates	971.3502	139.7	140.3	139.6	140.2	141.2	142.2	3.2	3.4	3.0	3.0	3.3	2.8	0.7
Education, health & social protection	940.3183	138.9	139.5	138.9	139.5	140.3	141.5	3.4	3.5	3.2	3.1	3.4	2.9	0.8

Key: - zero or negligible

Source: Office for National Statistics

<sup>1</sup> For further information on the composition of the indices shown, see 'The Consumer Prices Index: Goods and Services Indices and Special Aggregates', which can be downloaded from: <http://webarchive.nationalarchives.gov.uk/20160105160709/http://ons.gov.uk/>

<sup>2</sup> Energy includes electricity, gas and other fuels, and fuels and lubricants.

# F CPI goods and services: the latest three years

Percentage change over 12 months

	Goods components					Services components					
	Food & non-alcoholic beverages	Alcoholic beverages & tobacco	Energy <sup>1</sup>	Non-energy industrial goods <sup>2</sup>	All goods	Housing services <sup>3</sup>	Travel & transport services <sup>3</sup>	Recreational & personal services <sup>3</sup>	Communication	Miscellaneous & other services <sup>3</sup>	All services
<b>Weights</b>	CHZR	CHZS	A9F3	A9ER	ICVH	A9FG	A9FJ	A9FL	CHZY	A9FQ	ICVI
2026	109.6059	37.1650	58.3510	276.5115	481.6334	97.4316	66.7819	226.9834	24.3655	102.8043	518.3666
<b>Monthly</b>	D7G8	D7G9	DKL5	DKK3	D7NM	DKN2	DKN5	DKN7	D7GF	DKO4	D7NN
2023 Apr	19.0	9.1	10.8	6.6	10.0	5.6	7.2	9.1	7.9	4.2	6.9
May	18.3	9.3	8.4	6.8	9.7	5.6	8.5	9.4	9.1	4.1	7.4
Jun	17.3	9.2	3.2	6.4	8.5	5.6	8.6	8.8	9.5	4.1	7.2
Jul	14.8	9.4	-7.8	5.9	6.1	6.4	10.6	8.9	7.1	3.6	7.4
Aug	13.6	10.5	-3.2	5.2	6.3	6.3	8.9	7.8	8.2	3.5	6.8
Sep	12.1	11.2	-0.2	4.7	6.2	6.3	8.2	8.1	8.1	3.7	6.9
Oct	10.1	11.0	-15.7	4.3	2.9	6.1	7.5	7.5	8.1	3.9	6.6
Nov	9.2	10.2	-16.9	3.3	2.0	6.2	5.7	7.4	8.1	3.8	6.3
Dec	8.0	12.9	-17.3	3.1	1.9	6.2	7.2	7.1	8.5	3.6	6.4
2024 Jan	6.9	12.4	-14.9	2.7	1.8	6.4	7.4	7.3	8.2	3.7	6.5
Feb	5.0	11.9	-13.8	1.9	1.1	6.7	6.7	6.7	5.6	3.6	6.1
Mar	4.0	12.1	-12.7	1.5	0.8	6.9	5.9	6.4	7.5	3.5	6.0
Apr	2.9	8.1	-16.7	0.6	-0.8	6.8	4.9	6.7	4.0	4.0	5.9
May	1.7	7.8	-15.9	-0.1	-1.3	6.9	4.8	6.4	4.1	3.9	5.7
Jun	1.5	7.3	-16.0	-0.1	-1.4	7.1	4.6	6.6	2.9	4.0	5.7
Jul	1.5	7.3	-10.9	0.1	-0.6	7.0	2.7	5.4	4.5	4.7	5.2
Aug	1.3	5.8	-13.2	0.3	-0.9	7.0	6.5	5.3	4.1	4.7	5.6
Sep	1.9	4.9	-16.2	0.2	-1.4	7.0	2.1	5.0	5.2	4.7	4.9
Oct	1.9	5.3	-10.1	0.5	-0.3	7.2	3.1	4.7	4.6	5.0	5.0
Nov	2.0	6.9	-8.8	1.1	0.4	7.4	2.7	4.7	4.8	5.0	5.0
Dec	2.0	5.3	-6.0	1.2	0.7	7.4	-0.6	4.0	6.1	5.2	4.4
2025 Jan	3.3	4.9	-6.6	1.6	1.0	7.5	3.8	3.9	5.9	5.6	5.0
Feb	3.3	5.7	-6.8	1.1	0.8	7.2	3.8	3.8	7.3	5.8	5.0
Mar	3.0	5.3	-8.0	1.1	0.6	7.0	3.6	3.5	6.0	5.9	4.7
Apr	3.4	5.7	-0.9	1.1	1.7	7.2	10.2	3.5	5.8	5.2	5.4
May	4.4	5.4	-1.7	1.6	2.0	7.0	5.0	3.5	4.5	5.2	4.7
Jun	4.5	6.4	-0.7	1.8	2.4	6.7	6.2	3.4	4.9	5.1	4.7
Jul	4.9	5.7	1.4	1.6	2.7	5.5	8.4	4.1	6.1	4.3	5.0
Aug	5.1	5.9	2.5	1.6	2.8	5.5	5.6	4.2	6.1	4.4	4.7
Sep	4.5	5.8	4.3	1.5	2.9	5.3	7.3	4.0	4.7	4.1	4.7
Oct	4.9	5.9	1.8	1.5	2.6	5.1	5.9	4.1	4.3	4.1	4.5
Nov	4.2	4.0	1.9	1.1	2.1	4.8	6.5	3.8	4.8	4.1	4.4
Dec	4.5	5.2	1.7	1.0	2.2	4.5	7.1	4.1	4.2	4.0	4.5
2026 Jan	3.6	4.6	0.2	0.8	1.6	4.2	5.9	4.6	4.6	3.3	4.4
Feb	3.3	3.6	-1.0	1.3	1.6	4.2	6.3	4.4	4.3	3.3	4.3
Mar	3.7	3.3	4.9	0.8	2.1	4.1	7.5	4.4	4.1	3.2	4.5
Apr	3.0	2.8	7.1	1.1	2.4	3.4	0.2	3.8	4.5	3.1	3.2

**Key:** - zero or negligible

1 Comprises 'Electricity, gas and other fuels' (group 04.5) and 'Fuels and lubricants' (class 07.2.2).

2 Comprises all other goods elements of the CPI.

3 For further information on all of these services components, see 'The Consumer Prices Index: Goods and Services Indices and Special Aggregates', which can be downloaded from: <http://webarchive.nationalarchives.gov.uk/20160105160709/http://ons.gov.uk/>

Source: Office for National Statistics

# F1 CPIH goods and services: the latest three years

Percentage change over 12 months

	Goods components					Services components					
	Food & non-alcoholic beverages	Alcoholic beverages & tobacco	Energy <sup>1</sup>	Non-energy industrial goods <sup>2</sup>	All goods	Housing services <sup>3</sup>	Travel & transport services <sup>3</sup>	Recreational & personal services <sup>3</sup>	Communication	Miscellaneous & other services <sup>3</sup>	All services
<b>Weights</b>											
2026	L5CZ 86.5796	L5D2 29.3573	L5NU 46.0924	L5NX 218.4211	L5DD 380.4504	L5O8 287.0459	L5OC 52.7522	L5OE 179.2980	L5D8 19.2467	L5P4 81.2068	L5DE 619.5496
<b>Monthly</b>											
2023	L55P	L55Q	L5KY	L5L3	L563	L5LC	L5LG	L5LI	L55W	L5M9	L564
Apr	19.1	9.1	10.5	6.7	10.0	4.6	7.7	9.1	7.8	4.1	6.0
May	18.4	9.2	8.1	7.0	9.7	4.7	8.8	9.4	9.0	4.0	6.3
Jun	17.4	9.2	2.9	6.6	8.5	4.8	8.7	8.8	9.4	4.1	6.3
Jul	14.9	9.3	-8.2	6.1	6.1	5.1	10.4	8.9	7.0	3.5	6.5
Aug	13.6	10.5	-3.6	5.3	6.3	5.3	8.5	7.8	8.1	3.4	6.1
Sep	12.2	11.2	-0.7	4.9	6.2	5.4	8.3	8.1	8.1	3.6	6.3
Oct	10.1	11.0	-16.0	4.4	2.9	5.6	7.6	7.5	8.0	3.8	6.2
Nov	9.2	10.2	-17.1	3.4	2.0	5.6	5.8	7.4	8.1	3.7	6.0
Dec	8.0	12.8	-17.4	3.3	1.9	5.5	6.5	7.2	8.6	3.5	6.0
2024											
Jan	7.0	12.2	-15.0	2.8	1.8	5.7	6.9	7.3	8.2	3.7	6.1
Feb	5.0	11.8	-13.9	2.0	1.1	6.1	6.3	6.7	5.7	3.5	6.0
Mar	4.0	11.9	-12.8	1.6	0.9	6.4	5.4	6.5	7.6	3.5	6.0
Apr	2.9	8.0	-16.8	0.7	-0.8	6.4	4.4	6.8	4.1	4.0	6.0
May	1.7	7.8	-16.0	-	-1.3	6.6	4.4	6.4	4.2	3.9	5.9
Jun	1.5	7.3	-16.1	-0.1	-1.4	6.7	4.3	6.6	3.0	4.0	6.0
Jul	1.5	7.2	-10.9	0.1	-0.5	6.8	2.6	5.5	4.5	4.7	5.7
Aug	1.3	5.7	-13.2	0.3	-0.9	6.8	6.3	5.3	4.1	4.7	5.9
Sep	1.8	4.8	-16.2	0.2	-1.4	6.9	1.9	5.1	5.2	4.7	5.6
Oct	1.9	5.2	-10.0	0.5	-0.3	7.0	2.9	4.7	4.7	5.0	5.6
Nov	2.0	6.8	-8.7	1.0	0.4	7.4	2.5	4.7	4.8	5.0	5.7
Dec	2.0	5.3	-6.0	1.2	0.7	7.5	-0.6	4.0	6.1	5.2	5.4
2025											
Jan	3.3	4.9	-6.6	1.6	1.0	7.5	3.8	3.9	5.9	5.6	5.8
Feb	3.3	5.7	-6.8	1.1	0.8	7.1	3.8	3.8	7.3	5.8	5.7
Mar	3.0	5.3	-8.0	1.1	0.6	6.9	3.6	3.5	6.0	5.9	5.4
Apr	3.4	5.7	-0.9	1.1	1.7	6.8	10.2	3.5	5.8	5.2	5.8
May	4.4	5.4	-1.7	1.6	2.0	6.6	5.0	3.5	4.5	5.2	5.3
Jun	4.5	6.4	-0.7	1.8	2.4	6.3	6.2	3.4	4.9	5.1	5.2
Jul	4.9	5.7	1.4	1.6	2.7	5.5	8.4	4.1	6.1	4.3	5.2
Aug	5.1	5.9	2.5	1.6	2.8	5.4	5.6	4.2	6.1	4.4	4.9
Sep	4.5	5.8	4.3	1.5	2.9	5.2	7.3	4.0	4.7	4.1	4.9
Oct	4.9	5.9	1.8	1.5	2.6	4.9	5.9	4.1	4.3	4.1	4.6
Nov	4.2	4.0	1.9	1.1	2.1	4.7	6.5	3.8	4.8	4.1	4.5
Dec	4.5	5.2	1.7	1.0	2.2	4.4	7.1	4.1	4.2	4.0	4.5
2026											
Jan	3.6	4.6	0.2	0.8	1.6	4.1	5.9	4.6	4.6	3.3	4.3
Feb	3.3	3.6	-1.0	1.3	1.6	4.1	6.3	4.4	4.3	3.3	4.2
Mar	3.7	3.3	4.9	0.8	2.1	4.0	7.5	4.4	4.1	3.2	4.3
Apr	3.0	2.8	7.1	1.1	2.4	3.7	0.2	3.8	4.5	3.1	3.4

**Key:** - zero or negligible

1 Comprises 'Electricity, gas and other fuels' (group 04.5) and 'Fuels and lubricants' (class 07.2.2).

2 Comprises all other goods elements of the CPI.

3 For further information on all of these services components, see 'The Consumer Prices Index: Goods and Services Indices and Special Aggregates', which can be downloaded from: <http://webarchive.nationalarchives.gov.uk/20160105160709/http://ons.gov.uk/>

Source: Office for National Statistics



# G HICP<sup>1</sup> - International comparisons: EU countries<sup>5</sup>

Percentage change over 12 months

continued

	Lithuania	Luxem- bourg	Malta	Nether- lands	Poland	Portugal	Romania	Slovakia	Slovenia	Spain	Sweden	United Kingdom <sup>1</sup>	EU 27 average <sup>2</sup>	EU 28 average <sup>3</sup>	MUICP average <sup>4</sup>
	D7RT	D7SU	D7RU	D7SV	D7RV	D7SX	GHY7	D7RW	D7RX	D7SY	D7SZ	D7G7	FSL3	GJ2E	D7SR
2011	4.1	3.7	2.5	2.5	3.9	3.6	5.8	4.1	2.1	3.0	1.4	4.5	2.9	3.1	2.7
2012	3.2	2.9	3.2	2.8	3.7	2.8	3.4	3.7	2.8	2.4	0.9	2.8	2.6	2.6	2.5
2013	1.2	1.7	1.0	2.6	0.8	0.4	3.2	1.5	1.9	1.5	0.4	2.6	1.3	1.5	1.4
2014	0.2	0.7	0.8	0.3	0.1	-0.2	1.4	-0.1	0.4	-0.2	0.2	1.5	0.4	0.6	0.4
2015	-0.7	0.1	1.2	0.2	-0.7	0.5	-0.4	-0.3	-0.8	-0.6	0.7	-	0.1	0.1	0.2
2016	0.7	-	0.9	0.1	-0.2	0.6	-1.1	-0.5	-0.2	-0.3	1.1	0.7	0.2	0.2	0.2
2017	3.7	2.1	1.3	1.3	1.6	1.6	1.1	1.4	1.6	2.0	1.9	2.7	1.6	1.7	1.5
2018	2.5	2.0	1.7	1.6	1.2	1.2	4.1	2.5	1.9	1.7	2.0	2.5	1.8	1.9	1.8
2019	2.2	1.6	1.5	2.7	2.1	0.3	3.9	2.8	1.7	0.8	1.7	1.8	1.4	1.5	1.2
2020	..	..	..	..	..	..	..	..	..	..	..	0.9	..	..	..
2021	..	..	..	..	..	..	..	..	..	..	..	2.6	..	..	..
2022	..	..	..	..	..	..	..	..	..	..	..	9.1	..	..	..
2023	..	..	..	..	..	..	..	..	..	..	..	7.3	..	..	..
2024	..	..	..	..	..	..	..	..	..	..	..	2.5	..	..	..
2025	..	..	..	..	..	..	..	..	..	..	..	3.4	..	..	..
2019 Jul	2.5	1.6	1.8	2.6	2.5	-0.7	4.1	3.0	2.0	0.6	1.5	2.1	1.3	1.4	1.0
Aug	2.5	1.4	1.9	3.1	2.6	-0.1	4.1	3.0	2.4	0.4	1.3	1.7	1.3	1.4	1.0
Sep	2.0	1.1	1.6	2.7	2.4	-0.3	3.5	3.0	1.7	0.2	1.3	1.7	1.1	1.2	0.8
Oct	1.5	0.8	1.4	2.8	2.3	-0.1	3.2	2.9	1.5	0.2	1.6	1.5	1.0	1.1	0.7
Nov	1.7	1.0	1.3	2.6	2.4	0.2	3.8	3.2	1.4	0.5	1.8	1.5	1.3	1.3	1.0
Dec	2.7	1.8	1.3	2.8	3.0	0.4	4.0	3.2	2.0	0.8	1.7	1.3	1.6	1.6	1.3
2020 Jan	3.0	2.5	1.4	1.7	3.8	0.8	3.9	3.2	2.3	1.1	1.5	1.8	1.7	1.7	1.4
Feb	2.8	1.8	1.1	1.3	4.1	0.5	2.9	3.1	2.0	0.9	1.3	1.7	1.6	..	1.2
Mar	1.7	0.3	1.2	1.1	3.9	0.1	2.7	2.4	0.7	0.1	0.8	1.5	1.1	..	0.7
Apr	0.9	-0.8	1.1	1.0	2.9	-0.1	2.3	2.1	-1.3	-0.7	-0.2	0.8	0.6	..	0.3
May	0.2	-1.6	0.9	1.1	3.4	-0.6	1.8	2.1	-1.4	-0.9	0.1	0.5	0.5	..	0.1
Jun	0.9	-0.4	1.0	1.7	3.8	0.2	2.2	1.8	-0.8	-0.3	0.9	0.6	0.7	..	0.3
Jul	0.9	0.1	0.7	1.6	3.7	-0.1	2.5	1.8	-0.3	-0.7	0.7	1.0	0.8	..	0.4
Aug	1.2	-0.2	0.7	0.3	3.7	-0.2	2.5	1.4	-0.7	-0.6	1.0	0.2	0.4	..	-0.2
Sep	0.6	-0.3	0.5	1.0	3.8	-0.8	2.1	1.4	-0.7	-0.6	0.6	0.5	0.2	..	-0.3
Oct	0.5	-0.4	0.6	1.2	3.8	-0.6	1.8	1.6	-0.5	-0.9	0.4	0.7	0.2	..	-0.3
Nov	0.4	-0.7	0.2	0.7	3.7	-0.4	1.7	1.6	-1.1	-0.8	0.2	0.3	0.2	..	-0.3
Dec	-0.1	-0.3	0.2	0.9	..	-0.3	..	1.6	-1.2	-0.6	..	0.6	..	..	-0.3
2021 Jan	..	..	..	..	..	..	..	..	..	..	..	0.7	..	..	..

Key: - zero or negligible .. Not available

1 Published as the CPI in the UK.

2 Aggregate for European Union with 27 Member States.

Following user requests, on 10 April 2018 Eurostat began to publish in its database an aggregate for the EU with 27 Member States for around 50 most in-demand indicators, such as population, GDP growth rate and unemployment.

3 Data for the former EU28 aggregate.

For reference periods February 2020 or later, Eurostat no longer calculates or publishes the former EU 28 aggregate. This means that the final time periods for which the EU28 aggregate is published are January 2020, fourth quarter 2019 or the year 2019 depending on the frequency of the dataset. Eurostat will maintain historic data for EU28 in the database and will update as revisions are received.

4 The coverage of the Monetary Union Indices of Consumer Prices (MUICP) was extended to include Greece with effect from Jan 2001 and Slovakia from Jan 2009.

5 Following the end of the transition period, we have ceased to publish the Harmonised Index of Consumer Prices (HICP) international comparisons for EU countries in this table. The international comparisons will continue to be available on the Eurostat website. <https://ec.europa.eu/eurostat/web/main/data/database>

Sources: Office for National Statistics;  
Eurostat

# RPI: Detailed figures for various groups, sub-groups and sections<sup>1,2,3</sup>

	Weights <sup>6</sup>							Index (January 1987=100)						Percentage change over 12 months						Percentage change over 1 month
	2026	2025		2026		2026		2025		2025		2026		2026		2026 Apr				
		Nov	Dec	Jan	Feb	Mar	Apr	Nov	Dec	Jan	Feb	Mar	Apr							
<b>ALL ITEMS</b>	1 000	405.6	408.5	406.4	408.2	411.4	414.4	3.8	4.2	3.8	3.6	4.1	3.0		0.7					
Food and catering	145	358.7	361.0	361.0	361.6	363.2	363.9	5.1	5.4	4.7	4.5	4.8	4.1		0.2					
Alcohol and tobacco	75	549.1	553.0	556.3	557.5	558.9	559.9	3.9	4.6	4.2	3.5	3.3	3.0		0.2					
Housing and household expenditure	452	461.5	462.7	462.3	463.9	466.4	469.0	3.5	3.5	3.3	3.2	3.5	2.1		0.6					
Personal expenditure	64	319.1	319.6	315.7	321.7	324.1	325.6	3.7	3.9	4.1	4.6	3.8	4.3		0.5					
Travel and leisure	264	350.3	356.2	349.9	351.5	357.1	362.6	3.5	4.6	3.7	3.5	4.9	3.7		1.5					
Consumer durables	70	199.3	200.5	194.9	199.6	201.6	201.9	2.3	2.0	1.9	2.2	1.8	3.5		0.1					
Seasonal food	18	265.1	267.7	268.1	270.5	272.6	272.7	2.2	2.8	2.6	3.2	4.4	4.4		-					
Food excluding seasonal	90	322.0	324.1	323.7	323.2	324.4	324.7	5.7	5.9	4.8	4.4	4.7	3.7		0.1					
All items excluding seasonal food	982	409.2	412.1	409.8	411.6	414.9	418.0	3.8	4.2	3.7	3.6	4.1	3.0		0.7					
All items excluding food	892	421.0	424.0	421.5	423.6	427.1	430.6	3.6	4.0	3.6	3.5	4.0	2.9		0.8					
All goods	397	291.0	292.7	291.0	292.7	296.5	299.6	3.2	3.3	2.8	2.5	3.4	4.5		1.0					
All services	445	581.3	587.2	583.3	585.9	589.4	590.6	4.6	5.3	4.8	4.9	5.3	1.9		0.2					
<b>Other indices</b>																				
All items excluding:																				
mortgage interest payments (RPIX)	961	399.0	401.9	399.7	401.4	404.5	407.6	3.7	4.1	3.7	3.5	4.0	3.0		0.8					
housing	705	377.8	381.4	378.4	380.5	384.6	386.4	3.6	4.2	3.6	3.5	4.3	3.1		0.5					
mortgage interest payments and council tax	917	395.6	398.6	396.3	398.1	401.3	403.5	3.6	4.0	3.6	3.5	4.0	2.9		0.5					
mortgage interest payments and depreciation <sup>2</sup>	886	389.0	392.0	389.7	391.6	395.0	398.3	4.0	4.4	3.9	3.8	4.4	3.2		0.8					
<b>Food</b>	108	312.9	315.1	314.8	314.8	316.3	316.5	5.1	5.5	4.4	4.2	4.7	3.8		0.1					
Bread	3	291.6	294.4	295.7	296.5	294.1	295.2	2.6	2.8	3.1	4.0	4.2	2.4		0.4					
Cereals	3	258.6	263.2	259.5	264.6	263.2	266.5	0.0	1.7	0.8	2.2	2.1	3.2		1.3					
Biscuits and cakes	7	411.7	426.6	413.5	414.9	411.3	417.4	4.3	6.1	1.5	1.2	-1.6	-0.2		1.5					
Beef	4	335.9	337.0	336.4	335.0	337.3	334.4	28.3	27.7	24.7	20.9	19.1	13.5		-0.9					
Lamb	1	500.5	507.0	507.8	509.2	509.4	521.3	7.9	8.0	4.0	5.3	5.8	4.7		2.3					
of which home-killed lamb	1	548.5	555.7	556.6	558.1	558.3	571.3	7.9	8.0	4.0	5.3	5.8	4.7		2.3					
Pork	1	344.4	352.0	355.4	350.6	347.9	351.9	6.6	6.8	7.0	5.8	4.7	4.2		1.1					
Bacon	1	250.6	248.1	251.4	252.2	250.1	245.3	-2.5	-2.8	-3.1	-1.8	-1.9	-3.8		-1.9					
Poultry	4	155.1	154.9	154.5	154.2	154.6	154.4	3.4	3.8	2.7	1.6	2.2	-0.5		-0.1					
Other meat	5	252.6	254.1	252.6	252.1	254.9	255.5	4.6	5.3	3.4	4.0	5.8	4.4		0.2					
Fish	4	335.8	338.4	339.2	342.4	345.9	352.0	0.8	2.3	2.8	2.5	6.9	7.4		1.8					
of which fresh fish	2	331.8	340.3	336.7	344.0	351.2	360.8	0.3	2.5	2.7	3.1	9.0	9.6		2.7					
processed fish	2	334.4	331.2	336.3	335.3	335.0	337.6	1.3	2.2	2.9	2.0	4.7	5.2		0.8					
Butter	1	557.3	560.2	554.1	549.5	541.1	530.5	13.4	9.6	2.0	-0.6	0.7	-4.0		-2.0					
Oils and fats	1	374.5	366.9	368.9	366.5	369.9	359.8	-2.9	-5.7	-2.1	-2.0	-1.3	-5.3		-2.7					
Cheese	3	325.4	331.1	324.2	325.8	318.9	322.3	1.9	3.0	-0.2	1.6	-1.1	0.4		1.1					
Eggs	2	316.0	316.3	316.4	318.3	320.2	320.8	4.1	4.0	3.2	3.6	4.4	3.7		0.2					
Milk, fresh	3	352.6	355.9	354.7	353.8	352.7	352.4	3.1	3.4	3.5	3.1	2.3	2.1		-0.1					
Milk products	4	280.1	271.5	271.1	268.3	278.3	277.0	1.6	0.2	-0.5	-0.4	0.9	3.3		-0.5					
Tea	1	308.2	302.5	298.1	303.2	305.9	302.6	5.7	3.6	2.8	4.2	7.1	4.6		-1.1					
Coffee and other hot drinks	2	256.8	255.0	256.3	252.5	256.5	257.6	14.3	14.2	6.0	6.5	9.0	6.3		0.4					
Soft drinks	10	386.3	385.7	386.2	390.3	393.1	394.3	5.6	5.5	4.2	4.5	5.4	3.8		0.3					
Sugar and preserves	1	261.3	259.9	263.2	254.3	259.9	260.2	-2.1	-1.6	-0.5	-4.1	-0.5	-1.3		0.1					
Sweets and chocolates	14	426.6	429.0	439.5	427.9	435.3	432.5	12.7	11.7	12.0	8.7	10.6	8.3		-0.6					
Potatoes	4	322.0	326.0	321.6	322.4	321.9	321.5	2.2	2.0	1.9	2.0	-0.4	1.3		-0.1					
of which unprocessed potatoes	1	250.8	251.3	251.0	251.4	254.1	252.6	-0.2	-0.6	-0.2	-0.6	0.8	1.9		-0.6					
potato products	3	325.2	330.4	324.6	325.5	323.7	323.7	2.9	2.9	2.6	2.9	-0.8	1.1		-					
Vegetables other than potatoes	8	233.3	234.6	236.0	238.1	239.8	239.4	1.5	2.3	2.8	3.6	4.4	4.1		-0.2					
of which fresh vegetables	6	200.2	201.1	202.5	204.9	206.2	205.7	2.4	3.0	3.4	4.7	4.8	4.9		-0.2					
processed vegetables	2	356.6	359.8	361.1	360.9	364.4	364.5	-1.2	0.1	1.2	0.4	3.3	1.8		-					
Fruit	8	288.6	289.5	292.1	292.6	294.1	291.8	2.6	2.1	2.8	2.5	3.3	2.6		-0.8					
of which fresh fruit	6	270.7	273.8	274.3	275.5	277.3	274.7	1.9	2.0	2.1	2.0	3.0	2.7		-0.9					
processed fruit	2	382.4	374.2	385.8	383.6	383.7	382.5	4.9	2.2	4.8	4.0	4.0	2.4		-0.3					
Other foods	13	281.9	287.6	282.6	286.7	285.1	286.3	3.1	5.3	3.1	4.1	4.1	3.4		0.4					
<b>Catering</b>	37	506.6	508.8	510.0	513.1	515.1	518.0	5.1	5.3	5.4	5.4	5.3	5.1		0.6					
Restaurant meals	24	494.5	496.9	497.5	502.2	503.6	506.5	4.9	5.2	5.1	5.4	5.3	5.0		0.6					
Canteen meals	1	473.5	474.8	472.8	472.9	475.1	475.5	9.2	9.5	9.6	9.2	9.9	8.7		0.1					
Take-aways and snacks	12	500.4	502.2	504.8	504.7	507.7	510.5	5.1	5.2	5.6	4.9	5.1	5.1		0.6					
<b>Alcoholic drink</b>	58	386.5	385.9	387.9	387.2	388.1	388.6	3.8	4.0	3.6	2.6	2.3	1.9		0.1					
Beer	20	421.2	422.0	422.8	425.2	426.0	427.9	3.6	3.8	4.2	3.4	3.1	3.0		0.4					
on sales	14	478.6	480.2	477.7	485.2	487.1	489.6	3.7	3.8	4.0	4.1	4.1	4.1		0.5					
off sales	6	210.8	210.2	215.2	211.4	210.9	211.3	3.5	4.0	4.8	1.7	1.2	0.5		0.2					
Wines and spirits	38	342.8	341.7	344.1	342.1	342.9	342.9	3.9	4.1	3.2	2.1	1.9	1.4		-					
on sales	19	498.9	500.5	500.7	503.7	505.8	508.2	4.3	4.5	4.1	4.0	4.1	3.9		0.5					
off sales	19	241.3	238.9	242.3	238.0	238.1	237.0	3.7	4.0	2.4	0.3	-0.2	-1.0		-0.5					

Source: Office for National Statistics

# RPI: Detailed figures for various groups, sub-groups and sections<sup>1,2,3</sup>

continued

	Weights <sup>4</sup>							Index (January 1987=100)							Percentage change over 12 months						Percentage change over 1 month
	2026	2025		2026		2026		2025		2025		2026		2026		2026					
		Nov	Dec	Jan	Feb	Mar	Apr	Nov	Dec	Jan	Feb	Mar	Apr	Apr							
<b>Tobacco</b>	17	1 201.3	1 233.4	1 242.9	1 262.8	1 266.8	1 270.6	4.2	6.0	5.6	6.1	6.0	6.0	6.0	0.3						
Cigarettes	12	1 165.6	1 194.5	1 203.8	1 220.7	1 226.4	1 230.5	3.5	5.5	5.4	5.7	5.8	5.7	0.3							
Other tobacco	5	1 052.0	1 086.1	1 094.3	1 116.9	1 116.6	1 119.1	5.7	7.1	6.1	7.1	6.6	7.0	0.2							
<b>Housing</b>	295	554.1	555.1	555.4	556.5	556.9	564.7	4.1	4.4	3.9	3.9	3.6	2.9	1.4							
Rent	91	495.9	496.4	498.1	499.6	500.5	503.9	4.2	3.9	3.4	3.5	3.4	3.7	0.7							
Mortgage interest payments	39	547.3	551.0	550.1	552.7	560.0	561.1	6.1	6.2	5.1	5.0	4.5	4.8	0.2							
Depreciation (Jan 1995 = 100)	75	507.4	507.7	507.0	507.1	503.9	503.8	0.2	1.3	0.9	0.5	-0.2	-0.2	-							
Council tax and rates	44	499.2	499.2	499.2	499.2	499.2	524.5	5.4	5.4	5.4	5.4	5.4	5.1	5.1							
Water and other charges	16	816.6	816.6	816.6	816.6	816.6	876.7	26.1	26.1	26.1	26.1	26.1	7.4	7.4							
Repairs and maintenance charges	14	411.7	412.1	412.2	413.2	413.4	413.5	1.1	1.2	0.8	0.9	0.9	0.9	-							
Do-it-yourself materials	8	312.9	317.3	319.0	320.6	319.9	322.6	-0.2	0.1	0.7	1.3	1.3	3.6	0.8							
Dwelling insurance and ground rent	8	802.5	799.6	798.6	805.0	800.7	801.9	-3.7	-3.6	-3.8	-2.9	-3.2	-3.1	0.1							
<b>Fuel and light</b>	46	581.4	581.4	584.7	584.4	605.7	570.9	2.6	2.5	1.6	1.5	5.5	-4.7	-5.7							
Coal and solid fuels	1	495.1	498.1	492.6	492.6	491.2	503.0	0.0	0.7	-0.4	-0.5	-0.8	1.6	2.4							
Electricity	27	586.5	586.7	608.3	608.2	609.9	558.5	2.8	2.7	5.3	5.3	5.6	-6.0	-8.4							
Gas	16	561.8	561.4	541.6	539.8	541.6	516.8	2.2	2.1	-2.9	-3.2	-2.9	-14.0	-4.6							
Oil and other fuels	2	557.6	557.6	546.4	555.4	978.6	1 047.0	4.7	2.9	-5.5	-3.9	80.8	106.4	7.0							
<b>Household goods</b>	57	292.6	295.6	290.6	295.6	297.5	296.0	1.6	0.9	1.6	1.7	1.7	2.4	-0.5							
Furniture	21	399.8	407.6	392.9	400.1	408.4	403.8	0.6	-0.3	1.2	0.4	0.6	2.2	-1.1							
Furnishings	8	343.0	346.5	340.1	348.7	349.0	350.6	2.0	2.4	2.2	2.5	2.3	3.8	0.5							
Electrical appliances	5	87.2	89.9	86.9	90.8	88.4	87.9	-0.3	-1.6	-3.0	0.6	-2.0	0.9	-0.6							
Other household equipment	4	267.3	269.9	265.7	268.8	270.5	273.6	-0.1	1.4	0.1	0.2	1.0	2.8	1.1							
Household consumables	10	258.1	255.8	257.5	259.7	259.6	254.7	0.9	-1.2	1.2	0.2	1.2	-1.6	-1.9							
Pet care	9	350.6	352.3	353.0	354.5	356.4	359.5	4.7	5.0	4.9	5.5	5.6	6.2	0.9							
<b>Household services</b>	54	390.9	391.1	392.2	392.6	393.7	403.9	3.1	3.3	3.3	3.4	3.3	3.5	2.6							
Postage	1	701.4	701.4	700.2	698.2	698.2	722.9	4.0	1.7	3.8	2.5	3.5	3.4	3.5							
Telephones, telemessages, etc	22	151.4	151.7	152.3	152.3	153.0	161.5	4.1	4.8	5.5	5.5	5.2	6.0	5.6							
Domestic services	10	563.0	563.4	565.2	567.4	569.5	572.3	4.3	4.0	4.0	4.0	4.1	4.2	0.5							
Fees and subscriptions	21	653.1	652.4	653.5	654.1	654.7	657.6	1.5	1.5	0.5	0.9	1.0	0.6	0.4							
<b>Clothing and footwear</b>	23	318.9	318.6	307.1	317.4	322.1	325.4	5.6	6.1	6.0	6.7	5.0	6.5	1.0							
Men's outerwear	5	326.9	329.2	319.7	326.3	330.8	336.8	4.5	4.9	5.2	6.0	5.0	6.9	1.8							
Women's outerwear	9	332.4	331.6	311.4	329.8	337.9	341.9	10.7	12.3	11.1	11.3	9.2	10.1	1.2							
Children's outerwear	2	326.4	324.2	314.9	331.3	331.3	336.1	2.9	2.0	3.9	7.7	4.4	7.4	1.5							
Other clothing	3	344.6	346.7	339.9	343.6	345.5	345.3	3.5	2.9	1.8	3.5	1.6	2.0	-0.1							
Footwear	4	209.4	208.1	206.3	206.2	207.8	208.3	1.1	1.5	1.9	0.3	-0.6	1.2	0.2							
<b>Personal goods and services</b>	41	370.0	371.2	373.2	377.2	378.5	378.9	2.8	2.7	2.9	3.3	3.3	3.1	0.1							
Personal articles	9	255.8	256.3	251.3	258.7	261.0	260.9	4.5	4.1	3.4	3.8	4.6	4.4	-							
Chemists goods	14	281.3	282.6	284.7	287.1	287.4	287.0	1.8	1.8	1.6	2.5	2.1	1.9	-0.1							
Personal services	18	722.5	724.3	737.5	739.4	741.7	744.3	3.0	2.9	4.1	4.0	3.8	3.5	0.4							
<b>Motoring expenditure</b>	126	357.6	359.7	359.4	358.1	365.2	377.5	3.4	4.0	3.6	2.8	4.7	7.2	3.4							
Purchase of motor vehicles	59	116.8	116.6	116.4	116.4	116.8	116.9	1.5	1.5	1.2	1.1	0.7	0.0	0.1							
Maintenance of motor vehicles	19	646.3	648.8	652.2	655.6	666.4	671.1	6.6	6.7	5.6	6.1	7.4	7.8	0.7							
Petrol and oil	22	401.3	408.2	398.4	393.8	427.4	493.8	0.9	1.2	-1.6	-4.6	4.3	23.4	15.5							
Vehicle tax and insurance	26	1 889.6	1 910.9	1 953.7	1 930.6	1 940.7	1 976.6	9.1	11.7	14.3	13.3	14.3	9.7	1.8							
<b>Fares and other travel costs</b>	27	543.7	617.1	525.3	550.7	574.9	570.1	2.9	8.6	2.3	3.8	8.0	-6.5	-0.8							
Rail fares	7	549.6	542.4	534.5	550.3	549.5	556.9	5.8	4.4	4.3	5.1	2.0	0.3	1.3							
Bus and coach fares	2	670.4	681.5	656.7	670.7	664.0	684.3	6.2	5.3	0.6	0.9	1.6	0.6	3.1							
Other travel costs	18	472.1	560.2	454.7	481.3	513.5	503.3	1.5	9.0	2.0	4.0	11.1	-8.2	-2.0							
<b>Leisure goods</b>	19	115.5	114.9	115.4	115.9	116.9	116.9	1.8	0.9	0.4	0.2	0.7	1.8	-							
Audio-visual equipment	4	5.9	5.8	5.7	5.9	5.8	5.9	-1.7	-3.3	-6.6	-4.8	-4.9	-1.7	1.7							
CDs and tapes	1	175.3	169.0	169.8	173.4	168.2	171.5	7.7	1.0	5.7	2.3	-0.5	2.7	2.0							
Toys, photographic and sports goods	7	112.6	110.9	111.0	110.6	112.7	111.9	1.4	0.9	-2.1	-1.8	1.3	1.2	-0.7							
Books and newspapers	3	747.7	751.2	781.8	774.0	804.2	798.2	8.8	7.3	14.5	9.7	8.3	9.4	-0.7							
Gardening products	4	247.6	250.5	250.1	250.7	249.3	248.8	0.2	0.6	0.2	0.3	-0.5	-0.2	-0.2							
<b>Leisure services</b>	92	587.8	589.2	588.1	589.6	591.9	592.4	4.2	4.6	5.1	5.1	5.2	2.6	0.1							
Television licences and rentals	11	270.9	270.9	270.8	270.8	270.8	279.4	4.7	4.7	4.7	4.5	4.5	3.6	3.2							
Entertainment and other recreation	15	791.1	795.3	795.7	793.9	799.9	808.9	5.2	5.8	7.5	7.0	6.8	4.7	1.1							
Foreign holidays (Jan 1993 = 100)	53	415.6	416.4	416.7	417.9	418.9	413.3	5.2	5.4	5.4	5.5	5.7	1.6	-1.3							
UK holidays (Jan 1994 = 100)	13	381.2	382.3	376.0	379.3	383.0	390.9	0.1	1.0	1.8	2.0	2.1	3.9	2.1							

**Key:** - zero or negligible

1 An error was identified in the dataset underpinning the 2019 RPI weights covering the period February to June 2019. In line with the consumer price inflation statistics revision policy RPI was not revised. The corrected weights have been used for the July 2019 RPI onwards. Users should note there is a discontinuity between June's and July's index levels, which have been calculated using differing weights.

2 The Retail Prices Index and its derivatives do not meet the required standards for designation as National Statistics. A full report can be found at <http://www.statisticsauthority.gov.uk>.

3 As a direct result of the reduced availability of products due to the coronavirus (COVID-19) pandemic, some series are based on less than half of the number of price quotes used in February 2020 (the most recent 'normal' collection). To identify which series are affected, please the latest Consumer price inflation tables which can be found here: <https://www.ons.gov.uk/economy/inflationandpriceindices/datasets/consumerpriceinflation>, which includes notation to reflect the reduced coverage.

4 **Index date for April: 14 April 2026**

Source: Office for National Statistics

# RPI goods and services<sup>1,7</sup>: the latest three years

Percentage change over 12 months

	Goods components				All goods	Services components				All services
	Food	Alcohol & tobacco	Petrol & oil <sup>2</sup>	Other goods <sup>3</sup>		Rent	Utilities <sup>4</sup>	"Shop" services <sup>5</sup>	"Non-shop" services <sup>6</sup>	
<b>Weights<sup>8</sup></b>										
2026	CZGZ 108	CBVW 75	DOHB 24	DOHC 190	DOHD 397	CZXD 91	DOHE 89	DOHF 124	DOHG 141	DOHH 445
<b>Monthly</b>										
2023 Apr	CCYY 18.9	CZBK 8.6	DOGQ -9.9	DOGI 8.8	DOGD 9.8	CZCQ 5.8	DOGF 20.0	DOGG 6.6	DOGH 18.4	DOGE 13.1
May	18.1	8.8	-14.2	9.0	9.4	5.9	20.3	6.5	19.9	13.7
Jun	17.1	8.8	-23.4	8.5	8.0	6.0	19.9	6.2	20.5	13.7
Jul	14.5	8.9	-26.0	7.9	6.9	7.3	6.2	6.4	21.2	10.9
Aug	13.5	9.6	-15.9	6.9	7.3	7.4	6.6	6.1	18.9	10.5
Sep	12.1	10.0	-10.3	6.1	7.1	7.5	6.4	6.3	19.1	10.6
Oct	9.9	10.4	-7.1	5.2	6.4	7.4	-13.4	6.0	18.5	4.1
Nov	9.1	9.6	-11.2	4.1	5.2	7.5	-13.2	5.6	17.3	3.9
Dec	8.0	11.4	-10.9	3.5	5.0	7.4	-12.4	5.7	16.1	4.1
2024 Jan	6.8	10.5	-10.0	3.0	4.4	7.7	-10.5	5.8	15.7	4.4
Feb	5.1	9.5	-7.1	2.4	3.8	8.1	-10.9	5.4	15.1	4.2
Mar	4.1	9.2	-4.0	1.7	3.4	8.3	-10.2	5.5	13.6	4.1
Apr	2.8	7.2	0.4	0.9	2.6	8.0	-15.4	5.7	12.6	2.5
May	1.7	7.0	2.8	-	2.0	8.1	-15.0	5.4	11.2	2.3
Jun	1.7	6.6	3.5	-	2.0	8.2	-15.3	5.5	9.9	2.0
Jul	1.7	6.6	2.5	0.2	2.1	8.0	-8.1	5.1	7.5	3.6
Aug	1.4	5.5	-3.2	0.6	1.6	8.0	-8.2	5.4	9.9	4.5
Sep	2.2	4.9	-11.6	0.6	1.0	8.0	-7.9	5.0	5.7	3.1
Oct	2.1	4.8	-14.2	1.3	1.0	8.1	0.3	5.0	5.7	5.0
Nov	2.3	5.8	-12.2	1.7	1.7	8.4	1.3	5.2	3.8	4.8
Dec	2.2	4.9	-6.0	2.3	2.2	8.5	0.8	4.9	1.4	3.9
2025 Jan	3.6	4.8	-2.8	2.3	2.8	8.6	-1.6	4.8	2.7	3.6
Feb	3.3	5.3	-2.4	1.9	2.7	8.2	-1.2	4.8	1.9	3.4
Mar	3.2	5.0	-5.4	2.1	2.5	8.0	-1.7	4.8	1.4	3.1
Apr	3.8	5.1	-9.8	1.7	2.1	7.0	10.1	4.5	5.0	6.4
May	5.0	4.9	-11.5	2.3	2.5	6.8	9.2	4.6	3.2	5.6
Jun	5.2	5.5	-10.0	2.5	2.9	6.5	9.7	4.8	3.8	5.9
Jul	5.7	5.1	-7.0	2.3	3.0	5.2	11.0	4.8	6.1	6.5
Aug	5.9	5.2	-5.2	2.4	3.3	5.0	11.2	4.6	3.9	5.7
Sep	5.2	5.1	-1.4	2.2	3.3	4.9	10.8	4.7	4.3	5.8
Oct	5.8	5.3	1.1	2.3	3.7	4.6	6.9	4.7	4.3	5.0
Nov	5.1	3.9	1.1	2.1	3.2	4.2	6.6	4.6	3.7	4.6
Dec	5.5	4.6	1.3	1.8	3.3	3.9	6.6	4.7	5.7	5.3
2026 Jan	4.4	4.2	-1.8	2.0	2.8	3.4	6.6	4.8	4.6	4.8
Feb	4.2	3.5	-4.5	2.1	2.5	3.5	6.6	4.8	4.8	4.9
Mar	4.7	3.3	10.4	1.8	3.4	3.4	6.5	5.0	6.0	5.3
Apr	3.8	3.0	29.6	2.2	4.5	3.7	-1.7	4.5	1.0	1.9

**Key:** - zero or negligible

1 All components of the RPI are included in the above breakdown with the exception of mortgage interest payments, council tax and depreciation.

2 Including fuel oil.

3 The 'other goods' category comprises DIY materials, coal & solid fuels, household goods, clothing & footwear, personal articles, chemists goods, purchase of motor vehicles and leisure goods.

4 The 'utilities' category comprises water, electricity, gas, postage, telephone charges and rail fares.

5 The 'shop services' category comprises catering, repairs & maintenance charges, domestic services, personal services, maintenance of motor vehicles, TV licence & rentals and entertainment & recreation charges.

6 The 'non-shop services' category comprises dwelling insurance & ground rent, fees and subscriptions, vehicle tax and insurance, bus & coach fares, other travel costs, foreign holidays and UK holidays.

7 The Retail Prices Index and its derivatives do not meet the required standards for designation as National Statistics. A full report can be found at: <http://www.statisticsauthority.gov.uk/>.

8 An error was identified in the dataset underpinning the 2019 RPI weights covering the period February to June 2019. In line with the consumer price inflation statistics revision policy RPI was not revised. The corrected weights have been used for the July 2019 RPI onwards. Users should note there is a discontinuity between June's and July's index levels, which have been calculated using differing weights.

Source: Office for National Statistics