

Statistical bulletin

Construction output in Great Britain: Nov 2016

Short-term measures of output by the construction industry in Great Britain and contracts awarded for new construction work in the UK.

Contact:
Kate Davies
construction.statistics@ons.gsi.
gov.uk

Release date:
11 January 2017

Next release:
10 February 2017

Table of contents

1. [Main points](#)
2. [Things you need to know about this release](#)
3. [Construction output in November 2016 shows a small contraction](#)
4. [Contributions to growth](#)
5. [Detailed growth rates](#)
6. [New housing continues to grow](#)
7. [Links to related statistics](#)
8. [What has changed in this publication?](#)
9. [Quality and methodology](#)

1 . Main points

- In November 2016, construction output fell by 0.2% compared with October 2016, largely due to a contraction in non-housing repair and maintenance.
- The underlying pattern as suggested by the 3 month on 3 month movement shows a slight contraction of 0.1%.
- Repair and maintenance provides the largest downwards pressure to construction output, falling both on the month and year.
- New work in November 2016 increased, with new housing output continuing to grow.

2 . Things you need to know about this release

The monthly business survey, Construction output collects output by sector from businesses in the construction industry within Great Britain. Output is defined as the amount chargeable to customers for building and civil engineering work done in the relevant period excluding VAT and payments to sub-contractors.

The survey's results are used to produce seasonally adjusted monthly, quarterly and annual estimates of output in the construction industry at current price and at chained volume measures (removing the effect of inflation). The estimates are widely used by private and public sector institutions, particularly by the [Bank of England](#) and [Her Majesty's Treasury](#) to assist in informed decision and policy making. Construction output is an important economic indicator and is also therefore used in the compilation of the output measure of [gross domestic product](#).

This November 2016 release contains revisions for October 2016 only. This means that we have incorporated additional data since this period.

Revisions can be made for a variety of reasons, the most common include:

- late responses to surveys and administrative sources, or changes to original returns
- forecasts being replaced by actual data
- revisions to seasonal adjustment factors, which are re-estimated every month and reviewed annually

This revisions period is consistent with the National Accounts revisions policy.

On 11 December 2014 the UK Statistics Authority announced its decision to suspend the designation of Construction output and new orders as National Statistics due to concerns about the quality of the [Construction Price and Cost Indices](#) used to remove the effects of inflation from the statistics.

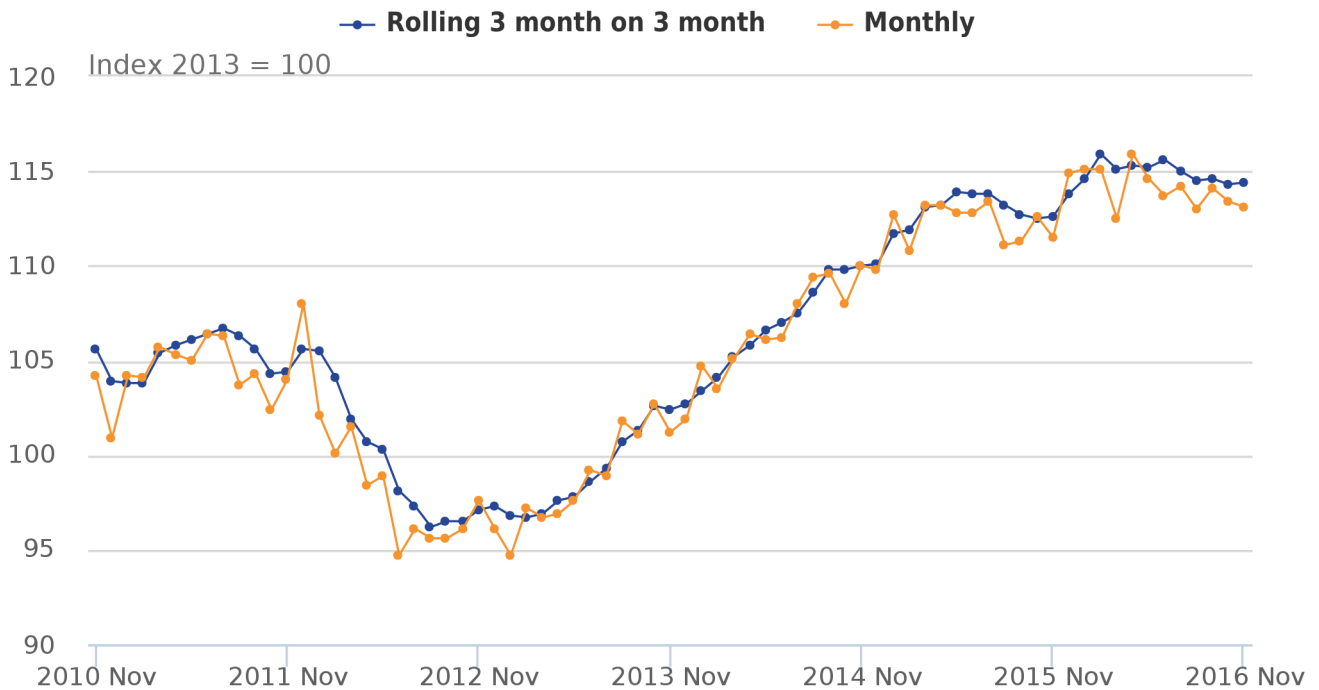
We took responsibility for the publication of the Construction Price and Cost Indices from the [Department of Business Innovation and Skills \(BIS\)](#) on 1 April 2015, introducing an interim solution for measuring output prices in June 2015 for all periods from January 2014 onwards. We are currently developing a long-term solution for the deflation of construction statistics.

Summary information can be found in the [Summary Quality and Methodology Information report](#).

3 . Construction output in November 2016 shows a small contraction

Figure 1: Rolling 3 month on previous 3 month and monthly all work, November 2016

Chained volume measure, seasonally adjusted, Great Britain



Source: Construction: Output and Employment – Office for National Statistics

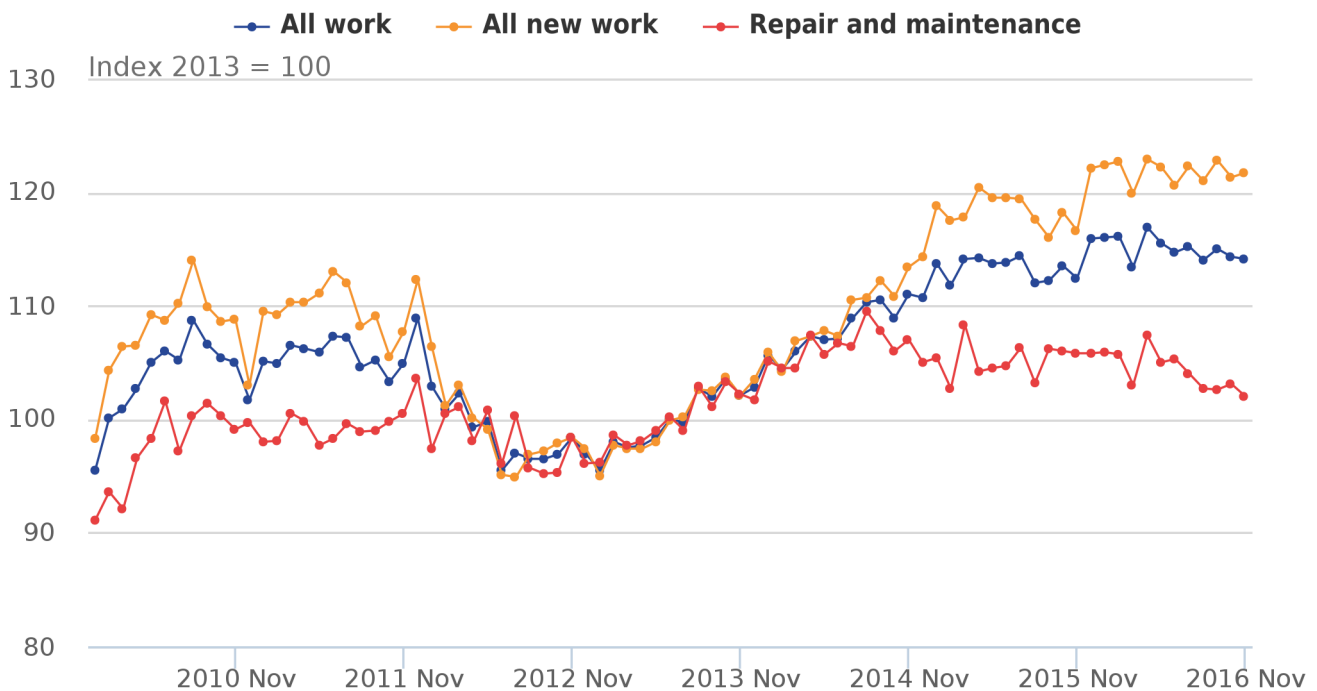
In November 2016, construction output decreased by 0.2% when compared with October 2016 and follows a month-on-month fall of 0.6% in October 2016. The monthly time series shows how volatile construction output can be, therefore the rolling 3 month on 3 month time series is also shown and provides a picture of the underlying trend within the construction industry.

The 3 month on 3 month rolling time series shows that construction output contracted by 0.1% following a similar pattern for recent months in that construction output is relatively flat.

4 . Contributions to growth

Figure 2: Components of all work, November 2016

Chained volume measure, seasonally adjusted, Great Britain



Source: Construction: Output and Employment – Office for National Statistics

Construction output can be broken down by different types of work, these are categorised into new work, and repair and maintenance as shown in Figure 2. The chart shows that through to mid-2014, new work, and repair and maintenance followed a similar pattern but that since reaching a level peak in August 2014, repair and maintenance has slowly contracted. Over the same period, new work has continued to increase, largely down to a rise in new housing work, however, the contraction in repair and maintenance provides a downwards drag to new work.

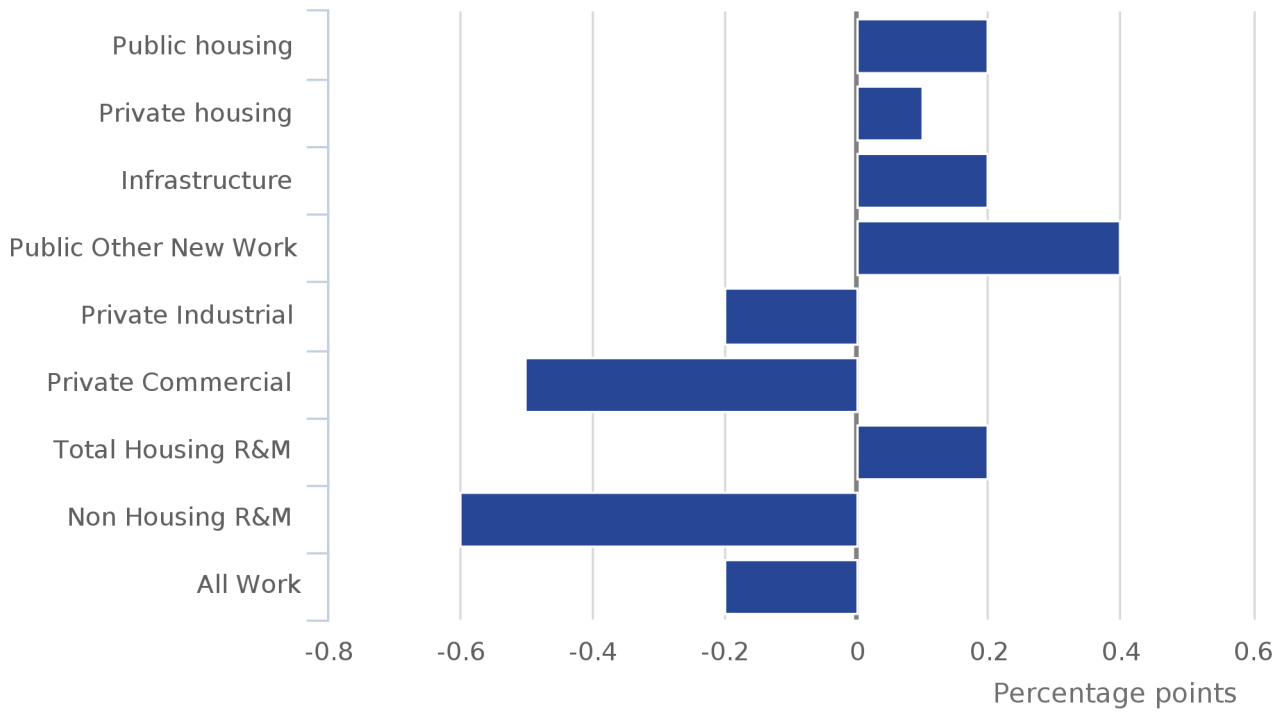
This longer-term trend is again seen in the monthly growth rates for November 2016, where new work increased by 0.3% and repair and maintenance contracted by 1.1%. When compared with November 2015, new work increased by 4.4% in November 2016 while repair and maintenance decreased by 3.6%.

It is worth noting that new work accounts for approximately two-thirds of all work, while repair and maintenance accounts for approximately one-third.

Figure 3 shows the contributions to growth for each of the main work types.

Figure 3: Contributions to the month-on-month volume growth from the main construction sectors

Great Britain, November 2016 compared with October 2016



Source: Construction: Output and Employment – Office for National Statistics

In November 2016, non-housing repair and maintenance provided the largest downward contribution to growth.

5 . Detailed growth rates

Table 1 provides a detailed description of the growth rates of each work type.

Table 1: Construction output main figures: November 2016

Seasonally adjusted, percentage change

Great Britain

	Most recent 3 months on a year earlier	Most recent 3 months on 3 months earlier	Most recent month on the same month a year ago	Most recent month on the previous month
Total all work	1.6	-0.1	1.5	-0.2
Total all new work	4.3	0.5	4.4	0.3
Total repair and maintenance	-3.2	-1.3	-3.6	-1.1
New housing				
Public	8.2	2.2	13.7	5.5
Private	12.6	1.1	12.5	0.6
Other new work				
Infrastructure	-6.1	1.9	-1.6	1.2
Excl infrastructure				
Public	1.4	-2.5	2.4	6.0
Private industrial	-9.7	1.0	-11.6	-6.0
Private commercial	7.2	-0.2	2.9	-2.6
Repair and maintenance				
Public housing	-12.3	-2.9	-11.7	-2.3
Private housing	-0.6	-0.2	0.7	2.3
Non-housing R&M	-2.4	-1.8	-4.4	-3.3

Source: Construction: Output and Employment – Office for National Statistics

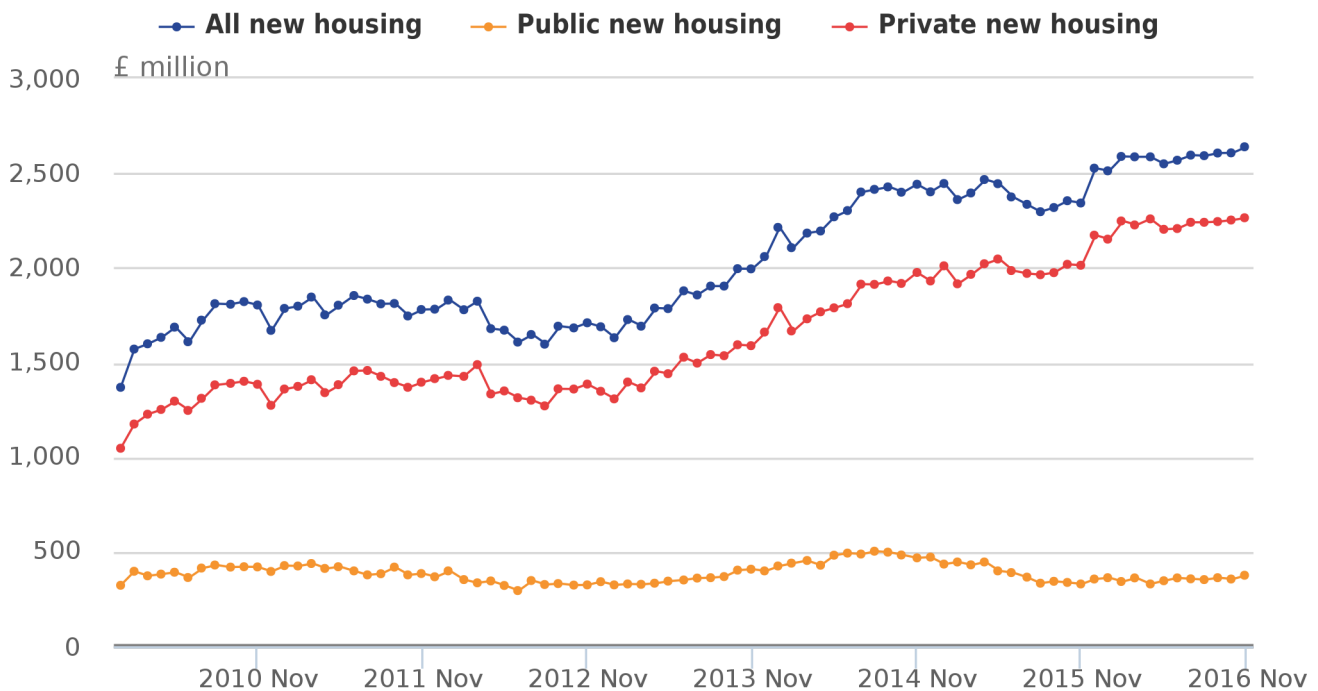
The greatest source of downwards pressure to the month-on-month growth rate for construction output came from non-housing repair and maintenance, followed by private commercial new work. Increased output in other work types was not sufficient to negate these falls month-on-month.

Compared with November 2015, new housing work provided the main contribution to the growth in all work.

6 . New housing continues to grow

Figure 4: Components of all new housing, November 2016

Chained volume measure, seasonally adjusted, Great Britain



Source: Construction: Output and Employment – Office for National Statistics

Despite the overall fall in all work in November 2016, new housing continued to grow at an increasing overall rate of 1.2% in comparison with October 2016, representing the biggest increment since February 2016. This has resulted in housing output reaching an all time high of £2,639 million, as seen in Figure 4.

The increase in housing has occurred in part as a result of the notable rise in public housing, which recovered from negative growth in October 2016 to increase by 5.5%. There was an increase of 13.7% compared with the same period a year ago, the largest month-on-year growth rise since December 2014. This high level of growth comes in the shadow of the government committing to “drive up the housing supply” by providing £8.0 billion to deliver over 400,000 affordable housing starts by 2020.

In addition, private sector housing continued to grow at a steady month-on-month rate of 0.6% compared with October 2016. However, similar to public housing, the private sector has experienced large growth in relation to the same period last year, at a rate of 12.5% which has been broadly consistent throughout 2016. This may be in part due to historically low interest rates facilitating borrowing for construction firms, coupled with the loosening of private housing planning restrictions, both of which could have contributed to the continued boom in private housing both in November 2016 and throughout the year.

7 . Links to related statistics

Output in the construction industry follows the [Eurostat Short Term Statistics \(STS\)](#) regulation for production in construction. Before any comparisons are made with the euro area or EU28, it is worth noting that the UK is the only member state to follow the [A method](#) for compiling [production in construction statistics](#).

The latest release of [production in construction](#) published by Eurostat on 19 December 2016 for October 2016 showed the seasonally adjusted production in the construction sector in both the Euro area (EA19) and EU28 when compared with September 2016. It should be noted that an accurate comparison cannot be made as Eurostat data are calculated on a 2010 equals 100 basis, while Great Britain data are calculated on a 2013 equals 100 basis.

Outside of the EU, the US Census Bureau release [Value of construction put in place](#) was published on 3 January 2017. This includes the total dollar value of construction work done in the US.

Other useful links

- [Department for Communities and Local Government](#) (Housing starts and completions)
- [Construction statistics in Northern Ireland](#)

8 . What has changed in this publication?

This is the first Construction output bulletin released as part of the [short-term indicators theme day](#). As such this bulletin now follows a more streamlined format and some tables such as response rates, previously found in the background notes, can now be found in the main datasets.

[Short-term indicators economic commentary](#) was published alongside this release, presenting new information on economic conditions in November 2016, with data available for output in production, construction and the trade balance.

9 . Quality and methodology

Our Monthly Construction Output survey measures output from the construction industry in Great Britain. It samples 8,000 businesses, with all businesses employing over 100 people or with an annual turnover of more than £60 million receiving a questionnaire by post every month.

The Construction [Quality and Methodology Information](#) document contains important information on:

- the strengths and limitations of the data
- the quality of the output: including the accuracy of the data and how it compares with related data
- uses and users
- how the output was created

1A.A CONSTRUCTION OUTPUT: VOLUME SEASONALLY ADJUSTED INDEX NUMBERS BY SECTOR

Index 2013 = 100

	New Housing			Other New Work				Repair and Maintenance					All Repair and Maintena- nce	All Work
	Public housing	Private housing	Total new housing	Infrastr- ucture	Excluding Infrastructure			All new work	Housing			Non housing R&M		
					Public	Private industri- al	Private commerci- al		Public housing	Private housing	Total housing			
	MV36	MV37	MVL7	MV38	MV39	MV3A	MV3B	MV3C	MV3D	MV3E	MV3F	MV3G	MV3H	MV3I
1997	44.0	84.2	76.4	77.3	50.3	208.4	92.1	83.5	115.3	113.7	115.2	85.1	98.5	91.3
1998	35.6	85.0	75.5	75.2	53.0	212.3	99.8	85.6	107.7	116.1	113.5	86.0	98.3	92.6
1999	30.9	76.5	67.6	73.1	59.7	219.1	111.7	88.2	103.3	114.6	110.8	85.5	96.8	93.8
2000	38.8	85.5	76.4	68.6	56.5	195.6	112.6	88.4	100.0	115.2	109.7	90.0	98.8	94.6
2001	39.7	79.8	72.0	73.4	57.0	199.7	111.8	88.3	94.6	120.2	110.5	98.3	103.7	96.3
2002	44.9	86.9	78.8	83.1	72.2	158.5	115.5	93.7	89.7	130.2	114.2	104.7	108.9	101.8
2003	51.1	108.5	97.4	78.3	90.5	167.3	111.3	99.4	101.4	127.2	117.3	107.7	111.9	106.7
2004	61.4	131.9	118.2	68.3	101.7	172.4	122.7	108.8	111.3	123.6	119.0	102.9	110.1	112.4
2005	57.7	135.7	120.6	65.5	91.5	168.9	117.4	105.6	110.5	112.6	111.8	105.5	108.3	109.7
2006	68.1	136.1	122.9	60.4	84.1	183.1	127.4	108.4	105.8	105.6	105.6	105.8	105.6	110.5
2007	78.6	133.9	123.2	59.6	82.6	178.8	140.2	112.2	100.3	102.9	101.9	108.3	105.1	112.9
2008	71.0	103.9	97.5	66.2	91.9	138.4	141.9	106.2	103.2	104.1	103.7	111.9	107.9	109.9
2009	72.5	71.4	71.6	75.8	111.2	97.1	106.3	89.9	100.4	91.0	94.1	101.0	97.6	95.4
2010	109.7	85.9	90.5	100.9	151.4	111.1	108.2	107.3	111.1	102.0	104.9	90.3	97.6	103.6
2011	112.1	93.7	97.2	109.4	140.0	100.6	110.9	109.9	102.1	102.8	102.6	96.4	99.5	105.9
2012	93.8	91.4	91.9	97.8	110.6	110.2	100.0	99.0	104.3	97.7	99.8	96.0	97.9	98.6
2013	100.0	100.0	100.0	100.0	100.0	100.0	100.0	100.0	100.0	100.0	100.0	100.0	100.0	100.0
2014	130.7	123.6	125.0	96.4	98.9	114.1	106.1	109.3	101.6	108.2	106.1	106.6	106.3	108.1
2015	107.0	134.4	129.0	132.9	97.0	125.1	107.4	118.6	102.1	110.4	107.7	102.8	105.3	113.5

Users of these data should note that there may be instances where the period on period growths for the same component differ between tables. This is due to the growth rates being calculated at a higher precision than 1 dp within the production system. This accuracy is truncated when transferred into the published tables.

1A.Q CONSTRUCTION OUTPUT: VOLUME SEASONALLY ADJUSTED INDEX NUMBERS BY SECTOR

Index 2013 = 100

	New Housing				Other New Work				Repair and Maintenance				All Repair and Maintena- nce	All Work
	Public housing	Private housing	Total new housing	Infrast- ructure	Excluding Infrastructure			All new work	Housing			Non housing R&M		
					Public	Private industri- al	Private commerci- al		Public housing	Private housing	Total housing			
	MV36	MV37	MVL7	MV38	MV39	MV3A	MV3B	MV3C	MV3D	MV3E	MV3F	MV3G	MV3H	MV3I
2001 Q4	43.1	81.9	74.3	72.6	62.3	185.1	115.3	89.9	94.6	119.0	109.8	102.8	105.9	98.2
2002 Q1	44.6	82.3	75.0	80.6	65.0	161.8	114.5	91.0	91.0	120.7	109.2	104.8	106.7	99.2
Q2	43.5	81.8	74.4	82.2	69.9	151.9	114.6	91.5	89.0	128.4	112.8	103.3	107.6	99.8
Q3	46.0	89.0	80.6	87.5	75.3	160.8	116.4	96.0	87.8	132.3	114.5	104.1	108.8	103.3
Q4	45.4	94.6	85.1	81.9	78.4	159.6	116.4	96.4	91.1	139.4	120.1	106.7	112.7	105.0
2003 Q1	47.4	99.2	89.1	81.6	81.3	161.3	110.2	95.9	89.7	118.8	107.4	106.6	106.9	102.6
Q2	49.4	102.2	92.0	80.0	86.9	161.2	108.9	96.7	99.8	131.9	119.4	108.3	113.2	105.3
Q3	52.0	111.1	99.6	76.5	93.3	167.7	110.4	99.7	109.9	129.6	122.2	109.4	115.1	108.0
Q4	55.8	121.6	108.8	75.1	100.6	179.2	115.7	105.2	106.4	128.5	120.1	106.5	112.6	110.9
2004 Q1	61.1	129.2	116.0	71.2	104.2	181.3	121.6	109.0	113.9	130.6	124.3	108.6	115.6	114.6
Q2	62.5	131.2	117.9	70.1	103.4	174.1	124.4	109.9	110.3	121.0	117.0	101.4	108.3	112.5
Q3	61.9	133.2	119.4	67.7	101.0	169.7	123.9	109.2	108.4	124.0	118.1	99.4	107.7	111.8
Q4	60.2	133.8	119.6	64.3	98.2	164.4	121.0	107.0	112.4	118.8	116.4	102.3	108.6	110.7
2005 Q1	57.8	134.7	119.8	65.7	96.4	161.6	119.0	106.3	117.3	116.1	116.5	108.4	112.0	111.4
Q2	56.7	138.2	122.4	64.0	93.4	167.9	118.1	106.3	116.7	112.5	114.0	106.2	109.7	110.6
Q3	55.5	136.0	120.4	65.2	89.0	171.0	115.7	104.7	104.9	111.6	109.1	104.6	106.6	108.4
Q4	61.0	134.0	119.9	67.2	87.2	175.0	116.7	105.2	103.3	110.0	107.5	102.9	104.9	108.2
2006 Q1	64.0	133.4	119.9	64.8	86.5	183.4	121.6	106.8	103.7	109.9	107.6	103.2	105.1	109.3
Q2	67.2	135.2	122.0	60.2	84.3	180.9	124.2	106.9	102.8	108.1	106.1	107.6	106.8	110.0
Q3	70.0	137.3	124.3	58.4	83.1	181.5	129.4	108.8	109.5	102.7	105.1	104.0	104.4	110.4
Q4	71.0	138.6	125.5	58.2	82.3	186.6	134.5	111.0	107.2	101.6	103.5	108.4	106.0	112.4
2007 Q1	78.5	138.6	126.9	57.4	82.0	189.3	137.0	112.2	106.8	104.0	104.9	110.4	107.7	113.8
Q2	80.2	135.8	125.0	58.5	82.2	187.8	139.9	112.8	99.1	104.9	102.8	107.5	105.1	113.3
Q3	78.5	132.9	122.3	60.2	83.0	175.7	139.5	111.7	95.6	100.0	98.4	106.4	102.4	111.6
Q4	77.3	128.4	118.5	62.2	83.3	162.5	144.5	112.1	99.7	102.8	101.6	108.9	105.3	112.9
2008 Q1	74.1	122.1	112.7	64.7	88.1	160.1	148.6	112.9	100.0	102.4	101.5	112.8	107.3	114.1
Q2	73.1	110.7	103.4	67.2	90.3	142.9	143.4	108.5	106.6	105.3	105.7	117.4	111.7	112.9
Q3	71.2	98.2	93.0	68.9	94.4	132.8	143.4	106.0	104.4	100.9	102.0	112.5	107.4	109.7
Q4	65.8	84.7	81.0	64.1	94.8	117.5	132.2	97.4	101.8	107.7	105.6	104.8	105.2	103.1
2009 Q1	61.6	74.6	72.1	65.5	96.0	101.3	119.8	90.4	94.8	93.4	93.8	101.4	97.7	95.8
Q2	64.5	71.7	70.3	71.4	104.4	94.4	112.5	89.6	98.9	89.9	92.8	98.9	95.9	94.6
Q3	75.8	68.0	69.5	76.3	116.5	93.1	100.7	88.2	106.0	95.9	99.3	106.4	102.9	96.3
Q4	88.2	71.3	74.6	90.2	127.9	99.5	92.1	91.5	101.6	84.7	90.4	97.3	93.9	95.1
2010 Q1	101.3	77.0	81.7	102.8	147.1	105.9	104.5	103.0	109.5	93.2	98.5	86.0	92.2	98.9
Q2	105.5	84.7	88.8	107.6	154.2	108.4	107.4	108.1	114.8	101.0	105.4	92.3	98.9	104.5
Q3	117.2	91.2	96.2	101.7	149.5	126.8	113.6	111.4	111.1	107.8	108.8	90.5	99.7	106.9
Q4	114.7	90.7	95.3	91.6	154.9	103.1	107.5	106.8	108.8	106.0	106.9	92.4	99.7	104.0
2011 Q1	119.6	92.5	97.8	104.2	156.6	99.3	106.2	109.7	103.5	102.4	102.7	95.0	98.9	105.5
Q2	114.3	93.3	97.4	114.6	143.3	102.7	110.7	111.4	104.2	101.6	102.4	94.8	98.6	106.5
Q3	109.5	95.5	98.2	109.2	133.7	99.8	112.6	109.8	99.9	101.3	100.9	97.4	99.1	105.7
Q4	104.9	93.3	95.6	109.5	126.4	100.4	114.0	108.5	100.6	106.0	104.3	98.3	101.3	105.7
2012 Q1	100.8	97.1	97.8	98.6	121.0	107.9	104.0	103.5	100.7	102.8	102.1	97.2	99.7	102.0
Q2	89.3	89.3	89.3	91.8	111.4	108.1	103.6	98.1	103.9	98.2	100.1	96.6	98.3	98.2
Q3	93.3	87.8	88.9	99.1	107.3	107.7	95.4	96.3	106.3	96.4	99.6	94.5	97.1	96.6
Q4	91.8	91.4	91.5	101.7	102.7	116.9	96.9	97.9	106.1	93.5	97.6	95.6	96.6	97.4
2013 Q1	91.1	90.9	90.9	99.0	99.5	108.5	97.9	96.7	102.4	96.6	98.4	96.6	97.5	97.0
Q2	95.6	98.8	98.1	98.6	101.1	98.6	97.5	98.5	99.8	98.8	99.1	99.1	99.1	98.7
Q3	101.3	102.2	102.0	98.8	102.8	97.6	103.6	101.8	98.0	101.9	100.6	101.4	101.0	101.5
Q4	112.1	108.2	108.9	103.6	96.6	95.3	101.0	103.1	99.8	102.7	101.8	103.0	102.4	102.8
2014 Q1	122.4	115.9	117.1	95.6	96.1	106.6	105.1	105.7	101.5	108.6	106.3	103.1	104.7	105.3
Q2	130.2	119.9	121.9	91.9	98.6	118.0	105.7	107.5	102.0	107.3	105.6	107.6	106.6	107.1
Q3	138.2	128.6	130.4	95.7	100.3	118.0	105.9	111.2	102.2	109.9	107.4	108.4	107.9	109.9
Q4	132.0	130.1	130.4	102.3	100.6	113.9	107.6	112.8	100.7	107.0	105.0	107.1	106.0	110.2
2015 Q1	121.7	131.6	129.7	131.6	95.8	123.2	106.6	118.0	102.6	106.2	105.0	105.9	105.5	113.2
Q2	114.5	135.2	131.2	136.1	96.9	121.4	107.7	119.8	102.4	111.2	108.4	100.6	104.5	113.9
Q3	96.8	132.0	125.2	134.7	97.2	133.0	105.7	117.7	103.0	112.0	109.1	101.3	105.2	112.9
Q4	94.9	138.6	130.1	129.4	98.1	123.0	109.8	119.0	100.4	112.2	108.4	103.4	105.9	113.9
2016 Q1	98.9	148.0	138.5	127.9	98.9	110.4	112.7	121.7	100.2	112.2	108.4	101.4	104.9	115.2
Q2	96.2	149.0	138.8	120.1	102.5	118.6	115.4	121.9	97.6	112.5	107.7	104.0	105.9	115.7
Q3	99.5	150.2	140.4	119.7	101.0	114.3	115.8	122.0	89.9	112.8	105.4	100.8	103.1	114.7

Users of these data should note that there may be instances where the period on period growths for the same component differ between tables. This is due to the growth rates being calculated at a higher precision than 1 dp within the production system. This accuracy is truncated when transferred into the published tables.

1A.M CONSTRUCTION OUTPUT: VOLUME SEASONALLY ADJUSTED INDEX NUMBERS BY SECTOR

Index 2013 = 100

	New Housing			Other New Work					Repair and Maintenance				All Repair and Maintena- nce	All Work
	Public housing	Private housing	Total new housing	Infra- structure	Excluding Infrastructure			All new work	Housing			Non housing R&M		
					Public	Private industri- al	Private commerci- al		Public housing	Private housing	Total housing			
	MV36	MV37	MVL7	MV38	MV39	MV3A	MV3B	MV3C	MV3D	MV3E	MV3F	MV3G	MV3H	MV3I
2011 Feb	118.3	92.0	97.1	104.5	159.0	97.4	104.3	109.2	106.8	101.0	102.8	93.5	98.1	104.9
Mar	121.9	94.4	99.7	106.1	152.1	97.4	107.4	110.3	108.3	102.2	104.2	96.8	100.5	106.5
Apr	114.7	89.8	94.6	112.5	146.1	101.0	110.0	110.3	105.1	103.8	104.2	95.4	99.8	106.2
May	117.1	92.6	97.4	116.1	142.1	101.3	109.2	111.1	102.5	99.6	100.5	94.9	97.7	105.9
Jun	111.1	97.5	100.1	115.2	141.7	105.7	112.9	113.0	105.1	101.4	102.6	94.0	98.3	107.3
Jul	105.2	97.6	99.1	114.9	139.5	98.1	113.0	112.0	101.3	101.1	101.1	98.1	99.6	107.2
Aug	106.8	95.6	97.7	106.0	131.5	98.9	111.3	108.2	100.1	100.7	100.5	97.2	98.9	104.6
Sep	116.6	93.4	97.9	106.7	130.1	102.5	113.7	109.1	98.3	102.2	100.9	97.0	99.0	105.2
Oct	105.1	91.7	94.3	100.9	120.9	105.3	112.8	105.5	99.6	106.2	104.1	95.6	99.8	103.3
Nov	107.1	93.5	96.1	107.9	122.3	102.2	113.4	107.7	100.0	105.9	104.0	96.9	100.5	104.9
Dec	102.4	94.8	96.2	119.7	135.9	93.7	115.8	112.3	102.1	105.8	104.6	102.5	103.6	108.9
2012 Jan	111.1	95.9	98.9	105.3	126.9	103.6	105.9	106.4	99.7	100.6	100.3	94.5	97.4	102.9
Feb	98.0	95.6	96.1	96.7	119.6	107.3	100.2	101.2	101.4	103.6	102.9	98.1	100.5	100.9
Mar	93.4	99.8	98.5	94.0	116.6	112.8	106.0	103.0	101.1	104.2	103.2	99.1	101.1	102.3
Apr	96.3	89.3	90.7	94.4	116.1	111.6	104.2	100.1	102.0	99.2	100.1	96.0	98.1	99.3
May	89.5	90.4	90.3	89.9	114.1	108.2	106.0	99.1	107.1	102.1	103.7	97.9	100.8	99.8
Jun	82.0	88.0	86.9	91.1	103.9	104.4	100.6	95.1	102.8	93.3	96.4	95.9	96.1	95.5
Jul	96.7	87.2	89.0	91.1	107.3	110.3	95.4	94.9	106.4	103.2	104.2	96.4	100.3	97.0
Aug	90.9	85.1	86.2	105.1	107.8	104.4	96.3	96.9	105.5	95.2	98.5	92.8	95.7	96.5
Sep	92.3	91.2	91.4	101.1	106.8	108.4	94.5	97.2	107.1	90.9	96.1	94.3	95.2	96.5
Oct	90.0	91.1	90.9	102.1	105.7	115.1	96.2	97.9	106.7	92.0	96.7	93.8	95.3	96.9
Nov	90.5	92.8	92.4	103.8	103.7	116.5	95.9	98.4	107.4	93.7	98.1	98.7	98.4	98.4
Dec	95.0	90.3	91.2	99.2	98.8	119.0	98.5	97.4	104.2	94.9	97.9	94.3	96.1	96.9
2013 Jan	90.3	87.6	88.1	95.2	96.3	110.0	98.9	95.0	100.5	96.0	97.4	95.0	96.2	95.5
Feb	91.8	93.6	93.3	99.6	101.1	111.7	97.1	97.7	104.5	96.7	99.2	98.0	98.6	98.0
Mar	91.1	91.5	91.4	102.1	101.2	103.8	97.6	97.4	102.1	97.0	98.7	96.8	97.7	97.5
Apr	93.0	97.4	96.5	97.0	99.3	101.4	97.1	97.4	104.0	96.2	98.7	97.6	98.1	97.7
May	96.0	96.5	96.4	96.7	103.0	99.2	98.2	98.0	98.6	99.2	99.0	99.0	99.0	98.4
Jun	97.7	102.4	101.5	102.1	100.9	95.1	97.2	99.9	96.9	101.0	99.7	100.7	100.2	100.0
Jul	100.3	100.3	100.3	99.3	101.7	95.0	100.7	100.2	93.8	100.8	98.5	99.5	99.0	99.7
Aug	100.9	103.3	102.9	101.6	101.2	105.2	103.2	102.6	101.3	102.4	102.0	103.7	102.9	102.7
Sep	102.5	102.9	102.8	95.4	105.7	92.7	106.9	102.5	98.9	102.6	101.4	100.9	101.1	102.0
Oct	112.0	106.8	107.8	106.1	96.2	91.9	103.1	103.7	100.9	103.0	102.4	104.3	103.3	103.6
Nov	113.4	106.4	107.8	102.8	96.6	95.5	99.3	102.1	98.7	104.3	102.5	101.9	102.2	102.1
Dec	111.1	111.3	111.3	102.0	96.9	98.5	100.5	103.5	99.9	100.8	100.5	102.8	101.7	102.8
2014 Jan	118.2	119.9	119.6	97.2	97.2	100.2	102.8	105.9	105.9	107.2	106.8	103.4	105.1	105.6
Feb	122.5	111.7	113.8	96.8	94.4	106.9	103.6	104.2	99.3	110.0	106.5	102.6	104.5	104.4
Mar	126.3	116.0	118.0	92.8	96.6	112.6	108.8	106.9	99.2	108.7	105.7	103.4	104.5	106.0
Apr	119.3	118.4	118.6	91.9	102.0	114.8	107.2	107.3	103.2	109.6	107.5	107.3	107.4	107.3
May	134.0	119.9	122.6	94.4	96.2	119.6	105.4	107.8	100.5	106.9	104.9	106.5	105.7	107.0
Jun	137.3	121.3	124.4	89.5	97.7	119.7	104.4	107.3	102.1	105.5	104.4	109.0	106.7	107.1
Jul	135.9	128.2	129.7	95.0	98.6	115.9	106.1	110.5	102.0	108.1	106.1	106.7	106.4	108.9
Aug	139.9	128.2	130.5	94.2	102.0	118.9	104.7	110.7	102.9	113.3	109.9	109.2	109.5	110.3
Sep	138.6	129.4	131.2	98.0	100.2	119.2	107.0	112.2	101.6	108.3	106.1	109.4	107.8	110.5
Oct	134.4	128.5	129.6	98.4	101.0	114.5	104.0	110.8	99.4	108.0	105.2	106.8	106.0	108.9
Nov	130.1	132.4	131.9	103.2	100.9	110.1	107.8	113.4	103.1	106.8	105.6	108.4	107.0	111.0
Dec	131.4	129.3	129.7	105.2	100.0	117.1	111.0	114.3	99.7	106.1	104.0	106.0	105.0	110.7
2015 Jan	121.1	134.7	132.1	129.4	95.0	128.7	107.6	118.8	102.5	105.9	104.8	106.1	105.4	113.7
Feb	124.2	128.4	127.6	129.2	97.3	123.5	107.7	117.5	100.8	103.8	102.8	102.6	102.7	111.8
Mar	119.9	131.7	129.4	136.1	95.0	117.4	104.3	117.8	104.5	109.0	107.5	109.0	108.3	114.1
Apr	124.1	135.5	133.3	140.2	95.7	123.1	105.3	120.4	99.8	110.5	107.1	101.4	104.2	114.2
May	111.0	137.1	132.1	135.7	95.7	119.0	107.0	119.5	103.5	110.5	108.2	100.8	104.5	113.7
Jun	108.5	133.1	128.3	132.4	99.2	122.0	110.7	119.5	103.9	112.6	109.8	99.6	104.7	113.8
Jul	101.7	132.0	126.2	138.2	97.7	138.2	107.2	119.4	102.5	112.1	109.0	103.5	106.3	114.4
Aug	92.8	131.6	124.1	135.2	96.4	130.5	106.9	117.6	102.2	110.8	108.1	98.3	103.2	112.0
Sep	95.8	132.3	125.3	130.8	97.6	130.2	103.0	116.0	104.3	113.0	110.2	102.2	106.2	112.2
Oct	93.8	135.3	127.2	130.7	95.6	127.5	109.8	118.2	101.2	113.8	109.8	102.3	106.0	113.5
Nov	91.8	134.9	126.6	122.5	98.4	125.7	109.3	116.6	98.7	112.8	108.3	103.4	105.8	112.4
Dec	98.9	145.6	136.5	134.9	100.3	115.7	110.2	122.1	101.2	110.0	107.2	104.4	105.8	115.9
2016 Jan	100.8	144.2	135.8	129.9	102.6	116.4	113.9	122.4	99.6	113.7	109.2	102.6	105.9	116.0
Feb	95.3	150.6	139.9	129.1	100.1	101.2	114.6	122.7	101.1	111.0	107.8	103.5	105.7	116.1
Mar	100.5	149.2	139.8	124.7	94.1	113.6	109.5	119.9	100.1	112.0	108.1	97.9	103.0	113.4
Apr	91.6	151.3	139.8	122.1	103.9	121.7	115.2	122.9	100.3	113.3	109.1	105.6	107.4	116.9
May	96.6	147.7	137.8	122.8	103.6	117.5	115.2	122.2	96.8	111.6	106.8	103.1	105.0	115.5
Jun	100.5	148.0	138.8	115.5	100.0	116.5	115.7	120.6	95.7	112.6	107.2	103.4	105.3	114.7
Jul	99.1	150.1	140.2	121.8	102.9	114.6	114.4	122.3	92.7	112.7	106.3	101.6	104.0	115.2
Aug	98.2	150.2	140.1	116.5	100.2	111.5	115.8	121.0	86.7	112.9	104.4	101.1	102.7	114.0
Sep	101.0	150.4	140.9	120.8	99.8	116.8	117.2	122.8	90.5	112.8	105.6	99.7	102.6	115.0
Oct	99.0	150.9	140.9	119.1	95.0	118.2	115.5	121.3	89.2	111.1	104.1	102.2	103.1	114.3
Nov	104.4	151.8	142.6	120.6	100.8	111.1	112.5	121.7	87.2	113.7	105.2	98.8	102.0	114.1

Users of these data should note that there may be instances where the period on period growths for the same component differ between tables. This is due to the growth rates being calculated at a higher precision than 1, do with-

1B.A CONSTRUCTION OUTPUT: VOLUME NON-SEASONALLY ADJUSTED INDEX NUMBERS BY SECTOR

Index 2013 = 100

	New Housing			Other New Work				Repair and Maintenance					All Repair and Maintena- nce	All Work
	Public housing	Private housing	Total new housing	Infra- struc- ture	Excluding Infrastructure			All new work	Housing			Non housing R&M		
					Public	Private industri- al	Private commerci- al		Public housing	Private housing	Total housing			
	MV3J	MV3K	MVL8	MV3L	MV3M	MV3N	MV3O	MV3P	MV3Q	MV3R	MV3S	MV3T	MV3U	MV3V
1997	42.5	84.8	76.6	80.1	51.2	211.7	93.7	85.6	117.5	117.4	117.4	84.6	101.0	91.5
1998	34.4	85.6	75.6	77.8	53.9	215.5	101.5	87.8	109.7	119.8	116.5	85.5	101.0	92.9
1999	29.9	77.3	68.1	76.0	60.9	223.3	114.1	90.4	105.7	118.8	114.6	85.4	100.0	94.1
2000	37.5	86.1	76.7	71.1	57.6	198.9	114.7	90.6	102.1	119.0	113.6	89.6	101.6	94.8
2001	38.4	80.4	72.3	76.1	58.1	203.2	113.8	90.2	96.5	124.2	115.3	97.8	106.6	96.5
2002	43.4	87.6	79.0	86.1	73.4	161.0	117.5	95.5	91.5	134.4	120.6	104.2	112.4	102.0
2003	49.5	109.4	97.8	81.2	92.2	170.2	113.3	101.9	103.5	131.5	122.5	107.3	114.9	106.9
2004	59.7	133.5	119.2	71.1	104.0	175.9	125.5	112.0	114.0	128.2	123.6	102.9	113.2	112.5
2005	56.2	137.6	121.8	68.3	93.7	172.8	120.2	109.1	113.5	117.0	115.8	105.7	110.8	109.8
2006	66.5	138.6	124.6	63.3	86.4	188.1	131.0	112.1	109.0	110.2	109.8	106.4	108.1	110.5
2007	77.0	136.8	125.2	62.6	85.3	184.3	144.7	116.0	103.7	107.8	106.5	109.3	107.9	112.9
2008	69.7	106.4	99.2	69.7	95.0	142.8	146.7	109.5	106.9	109.2	108.5	113.1	110.8	110.0
2009	71.1	73.0	72.7	79.8	114.9	100.2	109.8	92.7	103.9	95.4	98.1	102.0	100.1	95.5
2010	109.7	85.9	90.5	100.9	151.4	111.1	108.2	107.3	111.1	102.0	104.9	90.3	97.6	103.6
2011	112.1	93.7	97.2	109.4	140.0	100.6	110.9	109.9	102.1	102.8	102.6	96.4	99.5	105.9
2012	93.8	91.4	91.9	97.8	110.6	110.2	100.0	99.0	104.3	97.7	99.8	96.0	97.9	98.6
2013	100.0	100.0	100.0	100.0	100.0	100.0	100.0	100.0	100.0	100.0	100.0	100.0	100.0	100.0
2014	130.2	123.7	124.9	96.3	98.3	115.1	105.4	109.0	101.7	108.5	106.3	106.6	106.4	108.0
2015	107.5	134.4	129.2	125.6	97.5	127.3	107.1	117.2	102.4	110.7	108.1	103.0	105.5	112.7

Users of these data should note that there may be instances where the period on period growths for the same component differ between tables. This is due to the growth rates being calculated at a higher precision than 1 dp within the production system. This accuracy is truncated when transferred into the published tables.

1B.Q CONSTRUCTION OUTPUT: VOLUME NON-SEASONALLY ADJUSTED

INDEX NUMBERS BY SECTOR

Index 2013 = 100

	New Housing			Other New Work					Repair and Maintenance				All Repair and Maintenance	All Work
	Public housing	Private housing	Total new housing	Infra-structure	Excluding Infrastructure			All new work	Housing			Non housing R&M		
					Public	Private industrial	Private commercial		Public housing	Private housing	Total housing			
	MV3J	MV3K	MVL8	MV3L	MV3M	MV3N	MV3O	MV3P	MV3Q	MV3R	MV3S	MV3T	MV3U	MV3V
2001 Q4	39.7	82.7	74.4	75.5	64.5	193.4	120.4	93.2	95.5	123.5	114.5	103.6	109.0	99.3
2002 Q1	43.3	82.2	74.6	82.6	64.8	159.2	114.2	91.2	96.5	123.0	114.5	103.8	109.1	98.1
Q2	44.1	81.9	74.6	85.4	70.8	153.3	115.9	92.8	89.3	132.2	118.4	100.3	109.3	99.2
Q3	44.8	90.6	81.7	92.1	77.0	164.5	119.2	98.7	89.5	138.6	122.8	105.9	114.3	104.8
Q4	41.4	95.6	85.1	84.2	81.0	166.9	120.8	99.3	90.8	144.0	126.9	107.1	117.0	106.1
2003 Q1	47.1	99.3	89.2	83.7	81.4	160.8	110.4	97.0	95.6	121.1	112.9	105.6	109.3	101.7
Q2	50.0	102.0	91.9	83.1	87.9	161.6	109.9	98.5	100.8	135.2	124.1	104.8	114.4	104.6
Q3	50.2	113.0	100.8	80.8	95.3	171.0	113.0	103.2	111.9	135.6	128.0	111.2	119.6	109.5
Q4	50.6	123.4	109.3	77.1	104.2	187.4	120.0	109.1	105.8	133.9	124.9	107.4	116.1	111.8
2004 Q1	61.1	129.5	116.2	72.9	105.0	183.0	122.5	111.1	122.1	133.1	129.6	107.6	118.6	114.0
Q2	63.4	132.5	119.1	73.5	105.5	175.9	126.9	113.2	112.3	125.2	121.0	98.9	110.0	111.9
Q3	59.4	135.9	121.1	72.0	103.7	172.8	127.3	113.2	110.1	129.8	123.5	101.5	112.5	112.9
Q4	54.8	135.8	120.1	66.1	101.6	172.1	125.1	110.7	111.4	124.7	120.4	103.5	111.9	111.2
2005 Q1	58.4	135.4	120.5	67.5	98.2	165.4	120.8	109.0	126.4	118.4	121.0	107.8	114.4	111.0
Q2	57.3	140.0	124.0	67.3	95.2	170.0	120.4	109.7	118.0	116.5	117.0	103.6	110.3	109.9
Q3	53.2	139.2	122.5	69.7	91.4	173.6	119.4	109.1	106.5	116.7	113.4	107.2	110.3	109.6
Q4	55.9	135.7	120.2	68.8	89.9	182.3	120.3	108.7	102.9	116.3	112.0	104.3	108.1	108.5
2006 Q1	64.9	134.5	121.0	66.8	88.7	189.5	124.2	109.9	111.8	111.9	111.9	102.8	107.3	108.9
Q2	67.7	137.8	124.2	63.7	85.9	183.7	126.6	110.4	103.8	112.5	109.7	105.3	107.5	109.3
Q3	67.7	141.4	127.1	62.7	86.0	184.5	134.6	113.6	112.4	107.5	109.1	107.0	108.0	111.4
Q4	65.7	140.7	126.2	59.9	85.2	194.9	138.8	114.4	108.2	108.8	108.6	110.5	109.6	112.6
2007 Q1	79.1	140.4	128.5	59.4	84.3	196.4	140.6	115.6	114.1	105.8	108.5	110.5	109.5	113.2
Q2	80.2	139.4	127.9	62.4	83.9	191.4	143.4	116.5	100.4	110.1	107.0	105.7	106.3	112.6
Q3	76.7	137.2	125.4	64.7	86.3	179.2	146.0	116.8	99.3	104.5	102.8	109.8	106.3	112.8
Q4	72.0	130.4	119.1	63.8	86.6	170.4	149.0	115.2	101.1	110.8	107.7	111.2	109.5	113.0
2008 Q1	74.1	124.1	114.4	67.1	90.6	166.3	152.7	116.0	105.6	103.9	104.5	113.3	108.9	113.2
Q2	72.7	113.8	105.9	71.9	92.3	144.5	146.9	111.7	108.8	110.7	110.1	115.5	112.8	112.1
Q3	70.2	101.9	95.7	74.0	98.1	136.0	151.3	110.8	110.2	105.8	107.2	116.4	111.8	111.2
Q4	61.7	85.6	81.0	65.8	99.0	124.5	136.0	99.5	103.0	116.4	112.1	107.1	109.6	103.4
2009 Q1	61.7	75.5	72.8	68.1	98.7	104.4	121.9	92.1	99.2	94.1	95.7	101.7	98.7	94.6
Q2	64.7	73.9	72.1	76.9	107.0	94.6	115.6	92.4	101.6	94.5	96.8	97.4	97.1	94.2
Q3	74.8	70.6	71.4	81.7	120.2	95.1	107.0	92.2	112.6	100.5	104.4	109.7	107.0	97.9
Q4	83.1	72.2	74.3	92.5	133.8	106.6	94.8	93.9	102.1	92.4	95.5	99.4	97.4	95.3
2010 Q1	94.6	70.3	75.0	99.6	136.1	102.7	97.7	96.6	114.8	85.7	95.0	85.0	90.0	94.0
Q2	109.9	88.2	92.4	109.2	151.3	111.2	106.1	108.9	109.7	99.9	103.0	89.6	96.3	104.0
Q3	118.2	92.5	97.5	102.6	161.1	128.5	118.7	115.2	110.9	110.2	110.4	95.9	103.1	110.5
Q4	116.0	92.6	97.1	92.3	157.3	101.8	110.5	108.6	108.8	112.3	111.2	90.8	101.0	105.7
2011 Q1	112.8	84.5	90.0	101.1	144.7	97.9	99.6	103.0	109.5	95.2	99.8	93.9	96.8	100.6
Q2	118.8	97.9	101.9	116.5	141.8	104.8	109.5	112.7	99.5	100.8	100.3	92.2	96.3	106.4
Q3	110.5	97.4	99.9	110.6	145.4	99.1	118.0	113.8	99.7	103.9	102.6	103.4	103.0	109.6
Q4	106.2	95.0	97.1	109.3	128.0	100.3	116.5	109.9	99.7	111.4	107.6	96.1	101.8	106.8
2012 Q1	94.0	89.1	90.1	95.4	111.8	106.3	98.2	97.4	106.8	97.8	100.7	96.1	98.4	97.8
Q2	94.1	93.8	93.8	93.1	109.9	109.8	102.7	99.4	99.0	96.5	97.3	93.9	95.6	97.9
Q3	94.0	89.0	90.0	100.1	116.0	108.6	99.3	99.3	105.6	97.8	100.3	99.4	99.9	99.5
Q4	93.1	93.7	93.6	102.5	104.8	115.9	99.7	99.9	105.7	98.9	101.1	94.5	97.8	99.1
2013 Q1	84.1	83.0	83.2	96.0	91.5	105.7	92.2	90.8	107.0	87.4	93.7	94.8	94.3	92.1
Q2	100.7	103.2	102.7	99.7	99.4	99.6	96.3	99.5	95.4	99.3	98.0	96.0	97.0	98.6
Q3	101.9	103.6	103.3	100.0	111.2	98.5	107.8	104.9	98.3	104.9	102.8	107.1	104.9	104.9
Q4	113.3	110.2	110.8	104.3	97.9	96.2	103.7	104.9	99.3	108.4	105.5	102.1	103.8	104.4
2014 Q1	115.1	105.6	107.4	92.4	87.5	104.0	98.7	98.8	106.2	101.7	103.2	100.7	101.9	100.0
Q2	134.6	125.6	127.3	93.2	96.2	120.4	103.7	108.6	97.8	106.9	104.0	104.4	104.2	106.9
Q3	138.2	130.8	132.2	96.9	107.9	122.9	109.6	114.3	102.8	113.0	109.7	114.5	112.1	113.5
Q4	132.9	132.8	132.8	102.6	101.7	113.2	109.8	114.4	99.9	112.2	108.2	106.6	107.4	111.7
2015 Q1	116.3	120.6	119.8	119.6	87.7	121.8	100.5	109.5	108.2	99.2	102.1	103.4	102.7	106.9
Q2	120.1	142.4	138.1	127.9	96.4	125.2	106.2	119.9	99.2	110.9	107.1	98.5	102.8	113.3
Q3	97.6	133.6	126.6	129.1	106.8	137.9	109.8	119.8	103.4	115.6	111.7	106.8	109.2	115.7
Q4	96.1	141.2	132.4	125.7	99.0	124.2	111.7	119.8	98.8	117.3	111.4	103.4	107.4	115.0
2016 Q1	93.3	136.3	128.0	116.0	90.2	108.2	106.6	112.9	107.2	106.3	106.6	98.7	102.6	108.9
Q2	101.8	157.1	146.4	112.5	102.0	124.3	113.8	122.3	94.6	113.8	107.6	101.9	104.8	115.6
Q3	100.2	151.8	141.8	114.8	111.1	118.0	120.2	124.4	90.1	116.6	108.1	106.2	107.1	117.7

Users of these data should note that there may be instances where the period on period growths for the same component differ between tables. This is due to the growth rates being calculated at a higher precision than 1 dp within the production system. This accuracy is truncated when transferred into the published tables.

1B.M CONSTRUCTION OUTPUT: VOLUME NON-SEASONALLY ADJUSTED INDEX NUMBERS BY SECTOR

Index 2013 = 100

	New Housing			Other New Work				Repair and Maintenance				All Repair and Maintena- nce	All Work	
	Public housing	Private housing	Total new housing	Infra- structure	Excluding Infrastructure			All new work	Housing					Non housing R&M
					Public	Private industri- al	Private commerci- al		Public housing	Private housing	Total housing			
	MV3J	MV3K	MVL8	MV3L	MV3M	MV3N	MV3O	MV3P	MV3Q	MV3R	MV3S	MV3T	MV3U	MV3V
2011 Feb	110.0	81.9	87.3	97.4	141.3	96.0	95.8	99.7	108.3	91.4	96.8	90.3	93.6	97.3
Mar	127.4	96.9	102.8	118.8	165.5	109.0	113.5	118.1	133.4	107.8	116.0	110.2	113.1	116.2
Apr	113.5	89.2	93.9	111.0	139.3	94.0	104.2	106.7	96.7	97.1	96.9	91.1	94.0	101.8
May	118.7	94.9	99.5	117.6	141.0	108.2	107.7	111.7	97.9	99.8	99.1	92.1	95.6	105.5
Jun	124.1	109.5	112.4	120.8	145.2	112.4	116.5	119.8	103.8	105.5	105.0	93.4	99.2	111.8
Jul	104.8	99.1	100.2	114.3	147.2	96.7	115.6	114.0	99.6	103.9	102.5	100.7	101.6	109.2
Aug	107.9	96.5	98.7	109.2	149.7	101.3	117.9	113.8	99.8	101.5	101.0	106.2	103.6	109.9
Sep	118.9	96.5	100.8	108.2	139.4	99.4	120.4	113.5	99.6	106.4	104.2	103.2	103.7	109.8
Oct	109.8	98.1	100.4	105.1	129.5	105.4	121.5	112.1	102.2	114.5	110.6	97.9	104.2	109.0
Nov	112.3	98.1	100.9	112.5	130.0	107.3	123.5	114.5	105.8	117.1	113.5	98.9	106.2	111.3
Dec	96.3	88.7	90.2	110.4	124.6	88.2	104.4	103.3	90.9	102.5	98.8	91.3	95.0	100.1
2012 Jan	93.1	80.3	82.8	91.8	103.7	91.7	91.4	90.5	91.6	84.4	86.8	82.9	84.8	88.3
Feb	89.9	86.1	86.8	90.8	107.1	109.5	92.9	93.3	106.5	101.5	103.1	95.3	99.2	95.6
Mar	99.0	101.0	100.6	103.8	124.5	117.7	110.3	108.3	122.4	107.4	112.2	110.3	111.2	109.4
Apr	95.3	89.3	90.4	93.3	110.5	106.7	99.2	97.2	94.0	91.9	92.6	91.6	92.1	95.3
May	91.3	94.6	94.0	92.3	114.7	118.2	106.8	101.6	103.3	102.8	102.9	96.4	99.7	100.8
Jun	95.8	97.5	97.1	93.7	104.6	104.5	101.9	99.3	99.7	94.9	96.4	93.6	95.0	97.6
Jul	95.9	90.2	91.3	92.4	114.9	114.9	99.6	98.4	105.8	107.3	106.8	100.3	103.6	100.4
Aug	91.6	85.9	87.0	108.5	122.3	103.1	102.2	101.6	105.3	95.1	98.4	101.3	99.9	100.9
Sep	94.6	91.0	91.7	99.4	110.7	108.0	96.2	98.0	105.6	91.0	95.7	96.6	96.2	97.3
Oct	94.6	100.8	99.6	109.5	115.7	118.0	107.9	107.2	112.4	103.5	106.3	99.6	103.0	105.6
Nov	95.1	97.1	96.7	107.9	109.6	117.5	104.0	104.0	113.6	104.3	107.3	101.1	104.2	104.1
Dec	89.6	83.1	84.4	90.1	89.0	112.1	87.2	88.4	91.1	88.8	89.5	82.7	86.1	87.5
2013 Jan	72.2	74.5	74.0	84.3	79.6	99.7	87.6	82.3	93.8	81.7	85.6	85.0	85.3	83.4
Feb	84.0	83.8	83.8	93.1	89.6	111.9	89.8	89.6	105.6	86.5	92.6	94.5	93.5	91.2
Mar	96.2	90.6	91.7	110.5	105.4	105.5	99.2	100.3	121.7	94.2	103.0	104.9	104.0	101.7
Apr	92.3	98.5	97.3	97.0	95.5	100.6	94.0	96.1	97.9	96.2	96.7	94.5	95.6	95.9
May	97.6	100.4	99.9	99.0	103.1	100.1	98.6	99.7	95.3	100.2	98.6	97.1	97.8	99.0
Jun	112.1	110.9	111.1	103.1	99.6	98.1	96.2	102.7	93.0	101.5	98.8	96.5	97.6	100.7
Jul	99.5	104.9	103.8	101.9	110.2	98.2	106.5	104.9	94.9	107.9	103.7	105.1	104.4	104.7
Aug	101.2	102.0	101.8	103.1	112.6	105.8	106.9	105.3	100.4	101.3	101.0	110.9	105.9	105.5
Sep	104.9	103.9	104.1	95.0	110.9	91.5	110.1	104.4	99.7	105.5	103.6	105.3	104.5	104.5
Oct	116.2	117.6	117.4	113.7	105.0	97.8	115.4	113.4	106.3	115.3	112.4	110.8	111.6	112.7
Nov	117.0	109.1	110.7	105.2	100.2	95.1	105.0	105.6	103.0	113.5	110.2	103.1	106.6	106.0
Dec	106.8	103.8	104.4	94.1	88.5	95.7	90.8	95.5	88.6	96.3	93.8	92.4	93.1	94.6
2014 Jan	99.8	101.9	101.5	85.8	79.6	84.8	91.6	91.5	99.2	94.1	95.7	92.8	94.3	92.6
Feb	113.9	99.7	102.4	90.4	83.2	109.0	95.7	95.6	100.6	100.1	100.2	98.6	99.4	97.1
Mar	131.7	115.1	118.3	100.9	99.7	118.2	108.7	109.3	118.7	111.1	113.5	110.6	112.1	110.4
Apr	118.3	119.8	119.5	92.3	97.3	116.3	103.3	105.8	97.7	106.2	103.4	104.1	103.8	105.0
May	135.3	123.0	125.3	95.4	94.0	122.9	103.3	108.1	96.0	106.2	102.9	102.4	102.7	106.0
Jun	150.3	133.9	137.1	92.0	97.2	122.1	104.5	111.8	99.7	108.2	105.5	106.8	106.2	109.6
Jul	134.2	134.4	134.4	97.7	106.1	125.8	111.5	115.6	103.1	115.8	111.7	112.6	112.1	114.3
Aug	139.5	124.7	127.5	94.1	111.2	119.0	105.9	111.4	100.7	110.2	107.2	114.5	110.8	111.2
Sep	140.7	133.2	134.7	99.0	106.4	123.8	111.5	115.9	104.5	113.1	110.3	116.6	113.5	115.0
Oct	138.2	141.9	141.2	105.1	109.5	113.3	116.1	120.5	104.5	120.2	115.2	113.8	114.5	118.2
Nov	132.9	133.6	133.5	103.9	102.7	114.5	110.8	115.4	105.6	113.8	111.2	108.5	109.8	113.3
Dec	127.6	122.8	123.8	98.7	92.9	111.9	102.4	107.3	89.5	102.5	98.3	97.6	98.0	103.7
2015 Jan	105.2	112.9	111.4	105.1	77.2	109.5	94.8	100.2	94.5	90.6	91.9	93.6	92.7	97.4
Feb	116.7	115.5	115.7	112.8	86.3	127.1	100.3	106.9	102.4	93.3	96.3	98.4	97.3	103.2
Mar	126.9	133.5	132.2	140.7	99.7	128.9	106.5	121.4	127.8	113.6	118.1	118.2	118.2	120.2
Apr	123.4	139.6	136.5	131.6	93.2	123.3	102.2	118.4	96.2	107.7	104.0	99.6	101.8	112.0
May	112.9	138.6	133.6	125.7	94.3	122.6	103.5	116.9	97.7	107.3	104.2	95.7	99.9	110.3
Jun	123.9	149.0	144.2	126.3	101.6	129.7	112.9	124.4	103.6	117.6	113.1	100.2	106.6	117.6
Jul	101.3	138.5	131.3	135.0	107.7	142.0	112.4	123.5	103.0	120.3	114.7	108.5	111.6	118.9
Aug	92.2	127.2	120.4	126.4	106.9	133.4	108.0	116.5	99.3	108.1	105.3	103.1	104.2	111.8
Sep	99.3	135.2	128.2	126.0	105.7	138.2	109.1	119.3	107.9	118.5	115.1	108.7	111.9	116.4
Oct	97.9	146.7	137.2	129.6	101.3	128.5	119.3	124.9	103.8	124.2	117.6	107.6	112.6	120.2
Nov	95.0	138.2	129.8	121.2	102.2	130.2	114.2	119.5	102.2	121.8	115.5	106.0	110.7	116.1
Dec	95.5	138.6	130.2	126.4	93.5	113.8	101.7	114.9	90.5	105.9	100.9	96.6	98.8	108.7
2016 Jan	84.9	119.1	112.5	103.4	82.1	97.8	98.8	101.6	90.5	96.5	94.6	89.0	91.8	97.8
Feb	87.6	136.3	126.9	113.2	89.0	105.8	107.6	112.0	106.7	108.4	107.9	99.6	103.7	108.8
Mar	107.5	153.4	144.5	131.3	99.6	121.0	113.5	125.0	124.3	114.0	117.3	107.5	112.4	120.2
Apr	90.7	153.9	141.7	112.4	99.9	122.6	109.6	119.3	95.3	113.7	107.8	102.2	105.0	113.8
May	98.3	151.8	141.4	115.5	103.5	126.6	113.7	121.8	92.8	110.1	104.5	99.6	102.0	114.2
Jun	116.2	165.6	156.0	109.4	102.5	123.7	117.9	126.0	95.8	117.7	110.6	104.1	107.4	118.8
Jul	98.8	152.6	142.1	115.1	110.8	116.9	115.2	122.9	90.2	117.3	108.6	102.6	105.6	116.2
Aug	97.4	149.6	139.4	112.9	114.3	117.0	121.3	124.0	86.4	114.0	105.1	109.9	107.5	117.7
Sep	104.6	153.3	143.9	116.4	108.3	120.1	124.1	126.3	93.7	118.5	110.6	106.0	108.3	119.3
Oct	103.1	160.1	149.0	117.0	99.2	119.4	123.4	126.5	89.9	119.5	110.0	105.9	108.0	119.4
Nov	108.6	157.0	147.6	123.0	107.8	115.1	118.5	126.7	90.2	125.2	113.9	102.5	108.2	119.6

Users of these data should note that there may be instances where the period on period growths for the same component differ between tables. This is due to the growth rates being calculated at a higher precision than 1 dp within the production system. This accuracy is truncated when transferred into the published tables.

2A.A CONSTRUCTION OUTPUT: VOLUME SEASONALLY ADJUSTED BY SECTOR

£ million

	New Housing			Other New Work				Repair and Maintenance				All Repair and Maintenance	All Work	
	Public housing	Private housing	Total new housing	Infra-structure	Excluding Infrastructure			All new work	Housing					Non housing R&M
					Public	Private industrial	Private commercial		Public housing	Private housing	Total housing			
	MV3W	MV3X	MVL9	MV3Y	MV3Z	MV42	MV43	MV44	MV45	MV46	MV47	MV48	MV49	MV4A
1997	1 832	14 934	16 719	11 900	5 103	7 405	21 667	62 367	8 604	18 000	26 762	20 302	46 389	108 110
1998	1 484	15 084	16 513	11 571	5 378	7 544	23 482	64 008	8 037	18 377	26 364	20 525	46 274	109 715
1999	1 287	13 569	14 805	11 248	6 053	7 784	26 291	65 925	7 709	18 149	25 742	20 411	45 584	111 095
2000	1 614	15 159	16 721	10 554	5 734	6 947	26 492	66 045	7 461	18 232	25 492	21 484	46 522	112 070
2001	1 652	14 150	15 756	11 302	5 788	7 098	26 301	65 984	7 056	19 032	25 664	23 451	48 817	114 061
2002	1 870	15 421	17 242	12 780	7 324	5 631	27 170	70 042	6 695	20 610	26 527	24 999	51 283	120 602
2003	2 128	19 251	21 314	12 047	9 190	5 946	26 182	74 256	7 569	20 135	27 244	25 697	52 696	126 402
2004	2 556	23 391	25 867	10 513	10 319	6 124	28 875	81 288	8 304	19 561	27 637	24 562	51 808	133 118
2005	2 404	24 074	26 392	10 084	9 286	6 002	27 621	78 938	8 252	17 817	25 970	25 190	50 976	129 877
2006	2 833	24 148	26 903	9 296	8 529	6 508	29 979	80 992	7 897	16 710	24 532	25 250	49 704	130 882
2007	3 272	23 754	26 959	9 168	8 386	6 352	32 997	83 845	7 482	16 292	23 682	25 840	49 502	133 707
2008	2 957	18 433	21 345	10 190	9 328	4 916	33 386	79 375	7 701	16 474	24 093	26 699	50 781	130 210
2009	3 017	12 667	15 671	11 673	11 289	3 450	25 011	67 215	7 490	14 402	21 857	24 104	45 953	113 028
2010	4 720	15 377	20 097	14 865	14 886	3 825	24 486	78 159	8 136	15 766	23 901	20 605	44 507	122 666
2011	4 823	16 768	21 592	16 107	13 761	3 464	25 082	80 005	7 476	15 892	23 368	21 991	45 359	125 365
2012	4 037	16 363	20 400	14 403	10 873	3 794	22 614	72 084	7 639	15 107	22 746	21 902	44 648	116 732
2013	4 303	17 902	22 206	14 728	9 830	3 445	22 621	72 829	7 325	15 456	22 782	22 818	45 600	118 429
2014	5 623	22 127	27 750	14 196	9 722	3 931	23 995	79 594	7 441	16 724	24 165	24 313	48 478	128 072
2015	4 603	24 053	28 656	19 580	9 535	4 310	24 305	86 386	7 479	17 064	24 543	23 457	48 000	134 385

Users of these data should note that there may be instances where the period on period growths for the same component differ between tables. This is due to the growth rates being calculated at a higher precision than 1 dp within the production system. This accuracy is truncated when transferred into the published tables.

2A.Q CONSTRUCTION OUTPUT: VOLUME SEASONALLY ADJUSTED BY SECTOR

£ million

	New Housing				Other New Work				Repair and Maintenance				All Repair and Maintena- nce	All Work
	Public housing	Private housing	Total new housing	Infrast- ructure	Excluding Infrastructure			All new work	Housing			Non housing R&M		
					Public	Private industri- al	Private commerci- al		Public housing	Private housing	Total housing			
	MV3W	MV3X	MVL9	MV3Y	MV3Z	MV42	MV43	MV44	MV45	MV46	MV47	MV48	MV49	MV4A
2001 Q4	449	3 630	4 079	2 793	1 579	1 644	6 782	16 794	1 765	4 710	6 375	6 132	12 460	29 062
2002 Q1	464	3 650	4 114	3 100	1 650	1 437	6 734	16 995	1 697	4 778	6 343	6 252	12 560	29 366
Q2	454	3 630	4 084	3 164	1 774	1 349	6 743	17 094	1 661	5 083	6 553	6 166	12 658	29 558
Q3	479	3 946	4 425	3 365	1 911	1 429	6 845	17 942	1 637	5 234	6 653	6 214	12 802	30 598
Q4	473	4 196	4 669	3 150	1 990	1 416	6 848	18 010	1 699	5 515	6 977	6 368	13 262	31 079
2003 Q1	493	4 398	4 891	3 139	2 065	1 433	6 480	17 916	1 673	4 701	6 237	6 358	12 580	30 383
Q2	514	4 534	5 048	3 079	2 205	1 432	6 405	18 060	1 861	5 220	6 933	6 461	13 325	31 188
Q3	541	4 926	5 467	2 940	2 367	1 489	6 492	18 622	2 050	5 128	7 097	6 525	13 544	31 985
Q4	580	5 393	5 973	2 889	2 552	1 592	6 804	19 658	1 985	5 087	6 977	6 353	13 247	32 845
2004 Q1	635	5 728	6 363	2 739	2 643	1 610	7 154	20 372	2 126	5 166	7 220	6 482	13 607	33 924
Q2	651	5 819	6 470	2 697	2 622	1 546	7 319	20 532	2 058	4 788	6 797	6 048	12 749	33 323
Q3	643	5 908	6 551	2 604	2 564	1 507	7 286	20 396	2 023	4 906	6 857	5 929	12 674	33 107
Q4	627	5 936	6 563	2 474	2 490	1 461	7 115	19 988	2 097	4 702	6 762	6 103	12 778	32 764
2005 Q1	602	5 973	6 575	2 526	2 446	1 436	7 000	19 855	2 189	4 593	6 768	6 468	13 180	32 991
Q2	590	6 128	6 718	2 464	2 370	1 492	6 949	19 861	2 177	4 454	6 624	6 338	12 907	32 752
Q3	577	6 030	6 607	2 510	2 257	1 520	6 807	19 563	1 957	4 418	6 336	6 244	12 544	32 106
Q4	635	5 944	6 579	2 584	2 213	1 554	6 866	19 659	1 929	4 352	6 242	6 140	12 346	32 028
2006 Q1	666	5 916	6 582	2 494	2 195	1 630	7 151	19 947	1 935	4 347	6 249	6 155	12 368	32 350
Q2	699	5 997	6 696	2 314	2 139	1 607	7 306	19 980	1 918	4 277	6 165	6 422	12 574	32 572
Q3	728	6 089	6 817	2 247	2 107	1 612	7 613	20 333	2 043	4 066	6 104	6 205	12 284	32 679
Q4	739	6 146	6 885	2 240	2 088	1 659	7 910	20 732	2 001	4 020	6 014	6 468	12 479	33 280
2007 Q1	816	6 145	6 961	2 209	2 079	1 680	8 060	20 954	1 993	4 116	6 096	6 584	12 676	33 695
Q2	834	6 021	6 855	2 250	2 085	1 668	8 231	21 067	1 848	4 153	5 972	6 412	12 375	33 539
Q3	817	5 893	6 710	2 315	2 106	1 561	8 203	20 873	1 782	3 956	5 712	6 347	12 056	33 042
Q4	805	5 696	6 501	2 394	2 115	1 443	8 502	20 950	1 859	4 067	5 902	6 497	12 394	33 431
2008 Q1	771	5 412	6 183	2 489	2 234	1 421	8 741	21 088	1 866	4 054	5 898	6 729	12 625	33 787
Q2	760	4 909	5 669	2 585	2 293	1 270	8 432	20 277	1 990	4 167	6 138	7 003	13 140	33 418
Q3	741	4 355	5 096	2 650	2 394	1 180	8 437	19 813	1 947	3 992	5 924	6 713	12 639	32 468
Q4	685	3 757	4 442	2 467	2 407	1 045	7 775	18 197	1 898	4 261	6 133	6 255	12 377	30 537
2009 Q1	640	3 308	3 948	2 519	2 437	899	7 048	16 898	1 771	3 696	5 450	6 050	11 495	28 362
Q2	670	3 178	3 848	2 747	2 649	839	6 620	16 737	1 846	3 556	5 393	5 901	11 291	28 006
Q3	788	3 017	3 805	2 936	2 957	827	5 923	16 479	1 979	3 796	5 766	6 347	12 112	28 504
Q4	918	3 164	4 082	3 471	3 246	884	5 419	17 102	1 895	3 353	5 248	5 806	11 054	28 156
2010 Q1	1 090	3 446	4 536	3 784	3 614	912	5 910	18 756	2 006	3 603	5 608	4 906	10 515	29 271
Q2	1 135	3 792	4 928	3 961	3 790	934	6 072	19 685	2 103	3 902	6 005	5 265	11 269	30 954
Q3	1 261	4 080	5 341	3 745	3 675	1 092	6 423	20 276	2 035	4 164	6 199	5 161	11 361	31 637
Q4	1 234	4 058	5 292	3 374	3 807	888	6 080	19 442	1 993	4 096	6 089	5 273	11 362	30 804
2011 Q1	1 287	4 140	5 427	3 835	3 849	855	6 006	19 972	1 896	3 955	5 852	5 419	11 270	31 242
Q2	1 229	4 176	5 406	4 219	3 522	884	6 259	20 290	1 909	3 926	5 835	5 405	11 240	31 530
Q3	1 178	4 276	5 454	4 020	3 285	860	6 370	19 989	1 830	3 914	5 744	5 558	11 303	31 292
Q4	1 128	4 176	5 305	4 032	3 106	865	6 447	19 754	1 842	4 096	5 938	5 609	11 546	31 301
2012 Q1	1 085	4 346	5 431	3 632	2 974	929	5 884	18 850	1 845	3 971	5 816	5 547	11 363	30 213
Q2	961	3 995	4 955	3 380	2 737	931	5 858	17 861	1 904	3 796	5 699	5 511	11 210	29 071
Q3	1 004	3 931	4 934	3 648	2 637	928	5 395	17 541	1 947	3 726	5 673	5 392	11 065	28 606
Q4	988	4 091	5 079	3 744	2 525	1 007	5 477	17 832	1 943	3 614	5 556	5 453	11 010	28 841
2013 Q1	980	4 068	5 047	3 644	2 446	934	5 536	17 607	1 874	3 731	5 605	5 509	11 114	28 722
Q2	1 028	4 420	5 448	3 631	2 484	849	5 514	17 926	1 828	3 819	5 647	5 651	11 298	29 224
Q3	1 089	4 573	5 662	3 637	2 527	841	5 860	18 527	1 795	3 938	5 732	5 782	11 515	30 042
Q4	1 206	4 841	6 048	3 816	2 373	821	5 711	18 769	1 828	3 969	5 797	5 876	11 673	30 441
2014 Q1	1 316	5 186	6 502	3 520	2 361	918	5 942	19 242	1 858	4 198	6 056	5 881	11 937	31 179
Q2	1 401	5 365	6 765	3 385	2 424	1 017	5 977	19 568	1 867	4 148	6 015	6 139	12 154	31 721
Q3	1 486	5 755	7 242	3 525	2 464	1 016	5 991	20 238	1 871	4 245	6 116	6 185	12 302	32 540
Q4	1 420	5 822	7 241	3 765	2 473	981	6 086	20 546	1 845	4 133	5 978	6 108	12 085	32 632
2015 Q1	1 310	5 891	7 200	4 845	2 354	1 061	6 027	21 487	1 879	4 104	5 983	6 041	12 024	33 512
Q2	1 232	6 052	7 284	5 011	2 381	1 045	6 091	21 813	1 875	4 297	6 172	5 738	11 910	33 723
Q3	1 041	5 907	6 948	4 961	2 389	1 145	5 980	21 423	1 886	4 327	6 213	5 779	11 992	33 415
Q4	1 021	6 203	7 223	4 763	2 411	1 059	6 207	21 663	1 838	4 337	6 175	5 898	12 073	33 736
2016 Q1	1 064	6 623	7 687	4 710	2 430	951	6 373	22 150	1 836	4 337	6 172	5 782	11 954	34 104
Q2	1 035	6 668	7 703	4 423	2 519	1 021	6 525	22 191	1 787	4 348	6 135	5 934	12 069	34 260
Q3	1 070	6 724	7 794	4 408	2 482	984	6 549	22 218	1 647	4 359	6 006	5 749	11 755	33 973

Users of these data should note that there may be instances where the period on period growths for the same component differ between tables. This is due to the growth rates being calculated at a higher precision than 1 dp within the production system. This accuracy is truncated when transferred into the published tables.

2A.M CONSTRUCTION OUTPUT: VOLUME SEASONALLY ADJUSTED BY SECTOR

£ million

	New Housing			Other New Work					Repair and Maintenance				All Repair and Maintena- nce	All Work
	Public housing	Private housing	Total new housing	Infra- structure	Excluding Infrastructure			All new work	Housing			Non housing R&M		
					Public	Private industri- al	Private commerci- al		Public housing	Private housing	Total housing			
	MV3W	MV3X	MVL9	MV3Y	MV3Z	MV42	MV43	MV44	MV45	MV46	MV47	MV48	MV49	MV4A
2011 Feb	424	1 373	1 797	1 283	1 302	280	1 966	6 627	652	1 300	1 952	1 777	3 730	10 357
Mar	437	1 408	1 845	1 302	1 246	279	2 024	6 697	661	1 316	1 977	1 840	3 817	10 515
Apr	411	1 340	1 751	1 381	1 197	290	2 074	6 692	641	1 337	1 978	1 814	3 792	10 483
May	420	1 382	1 802	1 425	1 164	291	2 058	6 740	626	1 283	1 909	1 805	3 714	10 454
Jun	398	1 455	1 853	1 414	1 161	303	2 127	6 859	642	1 306	1 948	1 786	3 734	10 593
Jul	377	1 457	1 834	1 410	1 143	281	2 129	6 798	618	1 302	1 920	1 865	3 785	10 582
Aug	383	1 426	1 809	1 300	1 077	284	2 098	6 568	611	1 297	1 908	1 849	3 756	10 324
Sep	418	1 393	1 811	1 310	1 065	294	2 143	6 623	600	1 316	1 916	1 845	3 761	10 385
Oct	377	1 368	1 745	1 238	991	302	2 126	6 402	608	1 368	1 976	1 817	3 793	10 195
Nov	384	1 395	1 779	1 324	1 002	293	2 138	6 536	610	1 365	1 975	1 843	3 818	10 354
Dec	367	1 414	1 781	1 469	1 113	269	2 183	6 816	623	1 363	1 987	1 949	3 935	10 751
2012 Jan	398	1 431	1 829	1 292	1 039	297	1 997	6 455	609	1 296	1 905	1 798	3 702	10 158
Feb	352	1 426	1 778	1 186	980	308	1 889	6 141	619	1 334	1 953	1 865	3 818	9 959
Mar	335	1 488	1 823	1 153	955	324	1 998	6 254	617	1 342	1 959	1 884	3 843	10 097
Apr	345	1 333	1 678	1 158	951	320	1 965	6 072	622	1 278	1 901	1 825	3 726	9 798
May	321	1 349	1 670	1 103	934	311	1 998	6 016	654	1 315	1 969	1 862	3 831	9 847
Jun	294	1 313	1 607	1 118	851	300	1 896	5 773	627	1 202	1 829	1 824	3 654	9 426
Jul	347	1 300	1 647	1 118	879	317	1 798	5 758	650	1 329	1 978	1 832	3 810	9 569
Aug	326	1 270	1 596	1 290	883	300	1 815	5 883	644	1 226	1 870	1 765	3 635	9 519
Sep	331	1 360	1 691	1 241	875	311	1 782	5 900	654	1 171	1 825	1 794	3 619	9 519
Oct	323	1 359	1 682	1 253	866	330	1 813	5 944	651	1 185	1 836	1 783	3 620	9 563
Nov	324	1 385	1 709	1 274	850	335	1 807	5 975	656	1 207	1 863	1 877	3 740	9 715
Dec	341	1 347	1 688	1 217	809	342	1 857	5 913	636	1 222	1 858	1 792	3 650	9 563
2013 Jan	324	1 307	1 630	1 169	788	316	1 864	5 767	614	1 236	1 850	1 806	3 655	9 423
Feb	329	1 396	1 726	1 222	828	321	1 831	5 928	638	1 245	1 883	1 863	3 746	9 674
Mar	327	1 365	1 691	1 253	829	298	1 841	5 912	623	1 250	1 873	1 840	3 713	9 625
Apr	333	1 453	1 787	1 191	813	291	1 831	5 913	635	1 240	1 874	1 855	3 729	9 642
May	344	1 440	1 784	1 187	844	285	1 850	5 949	602	1 278	1 879	1 882	3 762	9 711
Jun	350	1 527	1 878	1 254	827	273	1 832	6 064	592	1 302	1 893	1 914	3 807	9 871
Jul	360	1 496	1 856	1 219	833	273	1 899	6 080	573	1 298	1 871	1 891	3 762	9 842
Aug	362	1 541	1 903	1 247	829	302	1 946	6 227	618	1 319	1 937	1 972	3 909	10 136
Sep	368	1 535	1 903	1 171	866	266	2 016	6 221	604	1 321	1 925	1 919	3 843	10 064
Oct	402	1 593	1 995	1 302	788	264	1 944	6 293	616	1 327	1 943	1 983	3 927	10 219
Nov	407	1 588	1 994	1 261	791	274	1 872	6 194	603	1 343	1 946	1 937	3 883	10 076
Dec	398	1 660	2 059	1 252	793	283	1 895	6 282	610	1 299	1 908	1 955	3 863	10 146
2014 Jan	424	1 789	2 213	1 192	797	288	1 938	6 428	646	1 381	2 027	1 966	3 993	10 422
Feb	439	1 666	2 106	1 188	773	307	1 953	6 326	606	1 416	2 023	1 950	3 973	10 299
Mar	453	1 730	2 183	1 139	791	323	2 051	6 488	606	1 400	2 006	1 965	3 971	10 459
Apr	428	1 767	2 194	1 128	835	330	2 022	6 510	630	1 411	2 041	2 041	4 082	10 592
May	481	1 788	2 269	1 158	788	343	1 986	6 544	614	1 378	1 991	2 024	4 016	10 560
Jun	492	1 810	2 302	1 099	800	344	1 969	6 514	623	1 359	1 982	2 073	4 056	10 569
Jul	487	1 913	2 400	1 166	808	333	2 000	6 706	623	1 392	2 015	2 029	4 044	10 750
Aug	502	1 912	2 414	1 156	836	341	1 973	6 721	628	1 459	2 087	2 076	4 163	10 884
Sep	497	1 930	2 427	1 203	821	342	2 018	6 811	620	1 395	2 015	2 080	4 095	10 906
Oct	482	1 917	2 399	1 207	827	329	1 961	6 723	607	1 391	1 997	2 031	4 028	10 752
Nov	467	1 975	2 441	1 267	827	316	2 033	6 884	629	1 376	2 005	2 062	4 067	10 951
Dec	471	1 930	2 401	1 291	819	336	2 092	6 939	609	1 366	1 975	2 015	3 990	10 929
2015 Jan	434	2 010	2 445	1 588	778	370	2 029	7 210	626	1 364	1 989	2 018	4 007	11 216
Feb	445	1 915	2 360	1 586	797	355	2 031	7 129	615	1 337	1 952	1 951	3 903	11 032
Mar	430	1 965	2 395	1 671	779	337	1 967	7 149	638	1 404	2 042	2 073	4 115	11 263
Apr	445	2 021	2 466	1 720	784	353	1 986	7 310	609	1 423	2 032	1 928	3 960	11 270
May	398	2 046	2 444	1 666	784	342	2 018	7 253	632	1 423	2 055	1 917	3 972	11 225
Jun	389	1 985	2 374	1 625	813	350	2 088	7 250	634	1 451	2 085	1 893	3 978	11 228
Jul	365	1 970	2 335	1 696	800	397	2 021	7 248	626	1 444	2 070	1 968	4 038	11 286
Aug	333	1 963	2 296	1 660	789	375	2 016	7 135	624	1 427	2 051	1 868	3 920	11 055
Sep	343	1 974	2 318	1 606	800	374	1 943	7 040	637	1 455	2 092	1 943	4 035	11 074
Oct	337	2 018	2 354	1 604	783	366	2 069	7 176	618	1 466	2 084	1 946	4 030	11 206
Nov	329	2 013	2 342	1 504	806	361	2 061	7 074	603	1 453	2 056	1 966	4 022	11 096
Dec	355	2 172	2 526	1 655	822	332	2 077	7 413	618	1 417	2 035	1 986	4 021	11 434
2016 Jan	362	2 151	2 512	1 595	840	334	2 148	7 429	608	1 464	2 072	1 952	4 024	11 453
Feb	342	2 247	2 588	1 585	820	290	2 161	7 444	617	1 430	2 047	1 969	4 016	11 460
Mar	361	2 226	2 586	1 531	771	326	2 064	7 277	611	1 442	2 053	1 861	3 914	11 192
Apr	329	2 258	2 586	1 499	851	349	2 172	7 458	612	1 460	2 072	2 008	4 080	11 538
May	346	2 203	2 549	1 507	848	337	2 172	7 414	591	1 437	2 028	1 961	3 989	11 403
Jun	361	2 207	2 568	1 417	820	334	2 181	7 320	584	1 451	2 035	1 966	4 001	11 320
Jul	356	2 240	2 595	1 495	843	329	2 157	7 420	566	1 452	2 018	1 933	3 950	11 370
Aug	352	2 240	2 592	1 430	821	320	2 182	7 346	529	1 454	1 983	1 922	3 904	11 250
Sep	362	2 244	2 606	1 483	818	335	2 210	7 452	553	1 453	2 006	1 895	3 901	11 352
Oct	355	2 252	2 607	1 462	778	339	2 178	7 365	545	1 431	1 976	1 943	3 919	11 284
Nov	375	2 264	2 639	1 480	825	319	2 121	7 384	532	1 464	1 996	1 879	3 875	11 260

Users of these data should note that there may be instances where the period on period growths for the same component differ between tables. This is due to the growth rates being calculated at a higher precision than 1 dp within the production system. This accuracy is truncated when transferred into the published tables.

2B.A CONSTRUCTION OUTPUT: VOLUME NON-SEASONALLY ADJUSTED BY SECTOR

£ million

	New Housing			Other New Work				Repair and Maintenance					All Repair and Maintenance	All Work
	Public housing	Private housing	Total new housing	Infra-structure	Excluding Infrastructure			All new work	Housing			Non housing R&M		
					Public	Private industrial	Private commercial		Public housing	Private housing	Total housing			
	MV4B	MV4C	MVLR	MV4D	MV4E	MV4F	MV4G	MV4H	MV4I	MV4J	MV4K	MV4L	MV4M	MV4N
1997	1 830	15 176	17 006	11 798	5 028	7 293	21 188	62 312	8 610	18 140	26 750	19 307	46 056	108 369
1998	1 480	15 316	16 796	11 464	5 294	7 424	22 951	63 928	8 039	18 509	26 548	19 508	46 056	109 984
1999	1 288	13 840	15 128	11 193	5 987	7 693	25 811	65 812	7 743	18 360	26 104	19 484	45 587	111 400
2000	1 614	15 423	17 037	10 476	5 657	6 851	25 941	65 962	7 476	18 399	25 875	20 455	46 330	112 292
2001	1 651	14 397	16 048	11 211	5 708	6 998	25 746	65 711	7 068	19 199	26 266	22 325	48 592	114 303
2002	1 868	15 677	17 545	12 675	7 215	5 545	26 583	69 564	6 704	20 781	27 485	23 788	51 273	120 836
2003	2 130	19 590	21 720	11 955	9 065	5 863	25 640	74 244	7 584	20 319	27 903	24 473	52 376	126 620
2004	2 567	23 892	26 460	10 475	10 219	6 061	28 381	81 595	8 349	19 812	28 161	23 474	51 635	133 230
2005	2 418	24 630	27 048	10 064	9 208	5 953	27 197	79 471	8 311	18 079	26 390	24 118	50 508	129 979
2006	2 862	24 811	27 673	9 317	8 497	6 481	29 643	81 612	7 988	17 030	25 018	24 278	49 296	130 907
2007	3 314	24 496	27 810	9 221	8 384	6 350	32 743	84 508	7 597	16 661	24 259	24 935	49 194	133 701
2008	2 998	19 040	22 038	10 266	9 340	4 920	33 183	79 746	7 831	16 875	24 707	25 805	50 512	130 258
2009	3 059	13 074	16 134	11 753	11 297	3 451	24 845	67 480	7 610	14 741	22 351	23 283	45 634	113 113
2010	4 720	15 377	20 097	14 865	14 886	3 825	24 486	78 159	8 136	15 766	23 901	20 605	44 507	122 666
2011	4 823	16 768	21 592	16 107	13 761	3 464	25 082	80 005	7 476	15 892	23 368	21 991	45 359	125 365
2012	4 037	16 363	20 400	14 403	10 873	3 794	22 614	72 084	7 639	15 107	22 746	21 902	44 648	116 732
2013	4 303	17 902	22 206	14 728	9 830	3 445	22 621	72 829	7 325	15 456	22 782	22 818	45 600	118 429
2014	5 603	22 140	27 743	14 178	9 665	3 965	23 853	79 404	7 447	16 764	24 210	24 319	48 529	127 933
2015	4 627	24 069	28 696	18 494	9 582	4 384	24 221	85 377	7 502	17 116	24 618	23 506	48 124	133 501

Users of these data should note that there may be instances where the period on period growths for the same component differ between tables. This is due to the growth rates being calculated at a higher precision than 1 dp within the production system. This accuracy is truncated when transferred into the published tables.

2B.Q CONSTRUCTION OUTPUT: VOLUME NON-SEASONALLY ADJUSTED BY SECTOR

£ million

	New Housing			Other New Work				Repair and Maintenance					All Repair and Maintenance	All Work
	Public housing	Private housing	Total new housing	Excluding Infrastructure				Housing			Non housing R&M			
				Infra-structure	Public	Private industrial	Private commercial	All new work	Public housing	Private housing		Total housing		
	MV4B	MV4C	MVLR	MV4D	MV4E	MV4F	MV4G	MV4H	MV4I	MV4J	MV4K	MV4L	MV4M	MV4N
2001 Q4	427	3 702	4 129	2 782	1 584	1 666	6 807	16 968	1 748	4 773	6 522	5 907	12 429	29 397
2002 Q1	466	3 677	4 144	3 040	1 592	1 371	6 457	16 604	1 767	4 752	6 519	5 919	12 438	29 042
Q2	474	3 666	4 140	3 143	1 740	1 320	6 554	16 897	1 635	5 109	6 745	5 720	12 465	29 362
Q3	482	4 054	4 536	3 392	1 891	1 417	6 743	17 980	1 639	5 355	6 994	6 041	13 035	31 015
Q4	446	4 279	4 725	3 100	1 992	1 437	6 830	18 084	1 662	5 565	7 227	6 108	13 335	31 418
2003 Q1	507	4 445	4 952	3 081	2 001	1 385	6 243	17 661	1 751	4 681	6 432	6 026	12 458	30 119
Q2	538	4 566	5 104	3 060	2 161	1 392	6 218	17 934	1 846	5 225	7 070	5 976	13 047	30 981
Q3	540	5 058	5 598	2 975	2 343	1 473	6 393	18 782	2 050	5 238	7 288	6 344	13 632	32 414
Q4	545	5 521	6 066	2 840	2 560	1 614	6 788	19 867	1 937	5 175	7 112	6 127	13 239	33 106
2004 Q1	657	5 796	6 453	2 686	2 580	1 576	6 929	20 224	2 236	5 143	7 379	6 137	13 516	33 740
Q2	682	5 932	6 614	2 707	2 593	1 515	7 178	20 607	2 057	4 836	6 893	5 644	12 537	33 144
Q3	639	6 084	6 723	2 650	2 549	1 488	7 199	20 609	2 017	5 015	7 031	5 790	12 822	33 431
Q4	589	6 080	6 669	2 432	2 497	1 482	7 074	20 154	2 039	4 818	6 857	5 903	12 760	32 915
2005 Q1	628	6 060	6 688	2 486	2 412	1 424	6 832	19 842	2 315	4 574	6 889	6 147	13 036	32 878
Q2	617	6 266	6 883	2 478	2 339	1 464	6 809	19 974	2 162	4 502	6 663	5 909	12 573	32 547
Q3	572	6 231	6 803	2 566	2 247	1 495	6 752	19 863	1 950	4 511	6 461	6 113	12 574	32 437
Q4	601	6 074	6 675	2 534	2 210	1 570	6 803	19 791	1 884	4 492	6 376	5 949	12 325	32 116
2006 Q1	698	6 018	6 716	2 460	2 179	1 632	7 024	20 010	2 047	4 324	6 371	5 865	12 236	32 246
Q2	728	6 168	6 897	2 344	2 111	1 582	7 159	20 092	1 902	4 346	6 248	6 006	12 254	32 346
Q3	728	6 327	7 055	2 309	2 112	1 589	7 610	20 676	2 058	4 153	6 211	6 106	12 317	32 993
Q4	707	6 299	7 006	2 205	2 095	1 678	7 851	20 834	1 981	4 206	6 187	6 302	12 489	33 323
2007 Q1	851	6 285	7 136	2 189	2 072	1 691	7 953	21 041	2 089	4 088	6 177	6 301	12 478	33 520
Q2	863	6 238	7 101	2 298	2 063	1 648	8 107	21 217	1 839	4 253	6 092	6 028	12 120	33 337
Q3	825	6 138	6 963	2 384	2 121	1 543	8 258	21 268	1 818	4 038	5 856	6 262	12 118	33 386
Q4	775	5 835	6 610	2 350	2 128	1 467	8 425	20 981	1 851	4 282	6 133	6 344	12 477	33 458
2008 Q1	797	5 553	6 350	2 471	2 226	1 432	8 633	21 113	1 934	4 016	5 950	6 464	12 413	33 526
Q2	782	5 095	5 878	2 648	2 269	1 244	8 306	20 344	1 992	4 276	6 268	6 590	12 858	33 202
Q3	755	4 559	5 314	2 725	2 411	1 171	8 554	20 175	2 019	4 087	6 106	6 641	12 746	32 921
Q4	664	3 833	4 497	2 422	2 434	1 072	7 690	18 114	1 887	4 496	6 384	6 111	12 494	30 609
2009 Q1	664	3 377	4 041	2 507	2 425	899	6 895	16 767	1 817	3 635	5 452	5 801	11 253	28 020
Q2	696	3 308	4 004	2 831	2 628	815	6 539	16 818	1 861	3 653	5 514	5 557	11 071	27 888
Q3	805	3 158	3 963	3 009	2 954	819	6 049	16 795	2 062	3 884	5 946	6 255	12 201	28 996
Q4	894	3 231	4 125	3 406	3 289	918	5 362	17 100	1 869	3 570	5 439	5 670	11 109	28 209
2010 Q1	1 018	3 146	4 164	3 666	3 343	884	5 527	17 585	2 103	3 310	5 413	4 847	10 260	27 845
Q2	1 182	3 946	5 129	4 021	3 718	958	5 998	19 823	2 010	3 859	5 868	5 112	10 980	30 803
Q3	1 272	4 140	5 412	3 779	3 959	1 107	6 713	20 970	2 032	4 256	6 288	5 470	11 758	32 728
Q4	1 248	4 144	5 392	3 399	3 866	876	6 248	19 782	1 992	4 340	6 332	5 177	11 509	31 290
2011 Q1	1 214	3 780	4 994	3 722	3 555	843	5 632	18 747	2 005	3 679	5 683	5 358	11 041	29 788
Q2	1 278	4 380	5 658	4 288	3 485	903	6 191	20 525	1 821	3 894	5 715	5 258	10 973	31 498
Q3	1 189	4 357	5 547	4 071	3 574	854	6 672	20 717	1 825	4 016	5 842	5 896	11 738	32 455
Q4	1 142	4 251	5 393	4 026	3 147	864	6 587	20 016	1 825	4 303	6 128	5 479	11 607	31 623
2012 Q1	1 011	3 989	5 000	3 514	2 746	915	5 552	17 728	1 956	3 778	5 734	5 484	11 219	28 946
Q2	1 013	4 197	5 210	3 428	2 702	946	5 806	18 091	1 813	3 730	5 543	5 355	10 898	28 989
Q3	1 012	3 985	4 996	3 685	2 850	936	5 617	18 084	1 934	3 779	5 713	5 672	11 385	29 469
Q4	1 002	4 192	5 194	3 776	2 575	998	5 639	18 181	1 936	3 820	5 755	5 391	11 147	29 328
2013 Q1	905	3 713	4 618	3 533	2 249	910	5 214	16 524	1 960	3 379	5 339	5 408	10 747	27 271
Q2	1 083	4 621	5 704	3 672	2 442	858	5 443	18 119	1 747	3 837	5 584	5 478	11 062	29 181
Q3	1 096	4 637	5 733	3 683	2 733	848	6 098	19 094	1 800	4 053	5 853	6 109	11 962	31 056
Q4	1 219	4 932	6 151	3 841	2 406	829	5 866	19 092	1 818	4 188	6 006	5 823	11 829	30 921
2014 Q1	1 239	4 725	5 964	3 401	2 151	895	5 581	17 991	1 944	3 931	5 875	5 744	11 619	29 610
Q2	1 448	5 620	7 069	3 432	2 363	1 037	5 865	19 766	1 791	4 130	5 921	5 958	11 879	31 645
Q3	1 486	5 852	7 339	3 569	2 651	1 058	6 200	20 817	1 882	4 368	6 250	6 534	12 784	33 601
Q4	1 430	5 943	7 372	3 777	2 499	975	6 207	20 830	1 829	4 335	6 164	6 084	12 248	33 078
2015 Q1	1 251	5 398	6 648	4 402	2 156	1 049	5 685	19 941	1 982	3 832	5 814	5 898	11 712	31 653
Q2	1 292	6 374	7 666	4 709	2 368	1 078	6 007	21 828	1 816	4 284	6 100	5 618	11 718	33 546
Q3	1 050	5 979	7 029	4 754	2 624	1 187	6 210	21 804	1 893	4 468	6 361	6 091	12 452	34 256
Q4	1 034	6 318	7 352	4 630	2 434	1 069	6 319	21 804	1 810	4 533	6 343	5 899	12 240	34 046
2016 Q1	1 004	6 100	7 104	4 270	2 217	932	6 031	20 554	1 963	4 108	6 071	5 629	11 700	32 254
Q2	1 095	7 031	8 125	4 141	2 506	1 071	6 434	22 276	1 733	4 398	6 131	5 816	11 947	34 223
Q3	1 078	6 795	7 873	4 226	2 731	1 016	6 799	22 646	1 651	4 506	6 156	6 058	12 214	34 860

Users of these data should note that there may be instances where the period on period growths for the same component differ between tables. This is due to the growth rates being calculated at a higher precision than 1 dp within the production system. This accuracy is truncated when transferred into the published tables.

2B.M CONSTRUCTION OUTPUT: VOLUME NON-SEASONALLY ADJUSTED BY SECTOR

£ million

	New Housing			Other New Work					Repair and Maintenance					
	Public housing	Private housing	Total new housing	Infra-structure	Excluding Infrastructure			All new work	Housing			Non housing R&M	All Repair and Maintenance	All Work
					Public	Private industrial	Private commercial		Public housing	Private housing	Total housing			
	MV4B	MV4C	MVLR	MV4D	MV4E	MV4F	MV4G	MV4H	MV4I	MV4J	MV4K	MV4L	MV4M	MV4N
2011 Feb	394	1 222	1 616	1 195	1 157	276	1 805	6 050	661	1 177	1 838	1 717	3 555	9 605
Mar	457	1 445	1 902	1 459	1 355	313	2 140	7 169	814	1 389	2 203	2 096	4 299	11 468
Apr	407	1 330	1 737	1 362	1 141	270	1 964	6 474	590	1 250	1 840	1 732	3 573	10 047
May	426	1 416	1 841	1 443	1 155	311	2 031	6 781	597	1 285	1 882	1 751	3 633	10 414
Jun	445	1 634	2 079	1 483	1 189	323	2 196	7 270	634	1 359	1 993	1 775	3 768	11 038
Jul	376	1 479	1 855	1 403	1 205	278	2 180	6 920	608	1 338	1 946	1 914	3 860	10 781
Aug	387	1 439	1 826	1 340	1 226	291	2 223	6 907	609	1 307	1 917	2 019	3 936	10 842
Sep	426	1 439	1 866	1 328	1 142	285	2 269	6 890	608	1 371	1 979	1 963	3 942	10 832
Oct	394	1 464	1 858	1 290	1 061	303	2 290	6 801	624	1 475	2 099	1 862	3 961	10 762
Nov	403	1 464	1 866	1 381	1 065	308	2 328	6 949	646	1 508	2 154	1 881	4 035	10 984
Dec	345	1 323	1 669	1 355	1 021	253	1 969	6 267	555	1 320	1 875	1 737	3 611	9 878
2012 Jan	334	1 198	1 532	1 127	850	263	1 722	5 494	559	1 088	1 647	1 576	3 223	8 717
Feb	322	1 284	1 606	1 114	877	314	1 751	5 663	650	1 307	1 957	1 811	3 768	9 431
Mar	355	1 507	1 861	1 274	1 020	338	2 079	6 571	747	1 383	2 130	2 097	4 227	10 798
Apr	342	1 332	1 674	1 145	905	306	1 871	5 901	574	1 184	1 758	1 742	3 500	9 400
May	327	1 411	1 739	1 133	940	339	2 013	6 164	630	1 324	1 954	1 834	3 788	9 952
Jun	343	1 454	1 797	1 150	857	300	1 922	6 026	609	1 222	1 831	1 780	3 611	9 637
Jul	344	1 346	1 690	1 134	941	330	1 877	5 971	646	1 382	2 028	1 907	3 935	9 907
Aug	328	1 281	1 610	1 332	1 002	296	1 926	6 166	643	1 225	1 868	1 927	3 795	9 961
Sep	339	1 358	1 697	1 220	906	310	1 813	5 947	645	1 172	1 817	1 837	3 654	9 601
Oct	339	1 503	1 842	1 344	948	339	2 035	6 508	686	1 333	2 019	1 894	3 913	10 422
Nov	341	1 449	1 790	1 325	898	337	1 961	6 311	693	1 344	2 037	1 923	3 960	10 271
Dec	321	1 240	1 561	1 106	729	322	1 644	5 362	556	1 144	1 700	1 573	3 273	8 635
2013 Jan	259	1 111	1 370	1 034	652	286	1 651	4 994	573	1 052	1 625	1 616	3 241	8 235
Feb	301	1 250	1 551	1 142	734	321	1 692	5 441	644	1 114	1 758	1 797	3 555	8 996
Mar	345	1 352	1 697	1 356	863	303	1 870	6 090	743	1 213	1 956	1 995	3 951	10 040
Apr	331	1 469	1 800	1 191	783	289	1 773	5 835	597	1 239	1 836	1 798	3 634	9 469
May	350	1 498	1 848	1 215	844	287	1 858	6 053	582	1 290	1 872	1 846	3 718	9 771
Jun	402	1 654	2 056	1 265	816	282	1 813	6 231	568	1 308	1 876	1 834	3 710	9 941
Jul	357	1 565	1 922	1 251	902	282	2 007	6 365	579	1 390	1 969	1 998	3 967	10 332
Aug	363	1 522	1 884	1 265	922	304	2 015	6 391	613	1 305	1 917	2 108	4 026	10 416
Sep	376	1 551	1 927	1 166	908	263	2 075	6 339	609	1 358	1 967	2 002	3 969	10 308
Oct	417	1 755	2 172	1 395	860	281	2 175	6 882	649	1 485	2 134	2 107	4 240	11 123
Nov	419	1 628	2 048	1 291	821	273	1 979	6 411	629	1 463	2 091	1 960	4 051	10 462
Dec	383	1 548	1 931	1 155	725	275	1 712	5 798	541	1 240	1 781	1 757	3 538	9 336
2014 Jan	358	1 520	1 878	1 053	652	243	1 727	5 554	605	1 212	1 817	1 765	3 582	9 136
Feb	408	1 487	1 895	1 109	681	313	1 804	5 803	614	1 289	1 903	1 875	3 778	9 581
Mar	472	1 718	2 190	1 238	817	339	2 050	6 634	725	1 430	2 155	2 104	4 259	10 893
Apr	424	1 788	2 212	1 132	797	334	1 947	6 422	596	1 367	1 964	1 979	3 943	10 365
May	485	1 834	2 320	1 171	770	353	1 948	6 561	586	1 368	1 954	1 948	3 901	10 463
Jun	539	1 998	2 537	1 129	796	350	1 970	6 783	609	1 394	2 003	2 031	4 034	10 817
Jul	481	2 005	2 487	1 199	869	361	2 102	7 018	629	1 491	2 121	2 141	4 262	11 279
Aug	500	1 860	2 360	1 155	911	342	1 996	6 764	615	1 420	2 034	2 177	4 211	10 975
Sep	505	1 988	2 492	1 215	871	355	2 102	7 036	638	1 457	2 095	2 217	4 311	11 347
Oct	496	2 116	2 612	1 290	897	325	2 189	7 313	638	1 549	2 187	2 164	4 351	11 664
Nov	477	1 993	2 470	1 275	842	329	2 088	7 003	645	1 466	2 111	2 063	4 174	11 177
Dec	458	1 833	2 290	1 211	761	321	1 930	6 513	546	1 321	1 867	1 857	3 723	10 237
2015 Jan	377	1 684	2 061	1 290	633	314	1 786	6 084	577	1 167	1 744	1 780	3 524	9 608
Feb	419	1 723	2 141	1 384	707	365	1 891	6 488	625	1 202	1 828	1 871	3 698	10 187
Mar	455	1 991	2 446	1 727	817	370	2 008	7 368	780	1 463	2 243	2 247	4 490	11 858
Apr	442	2 083	2 525	1 615	763	354	1 927	7 185	587	1 387	1 975	1 894	3 869	11 053
May	405	2 068	2 473	1 543	772	352	1 952	7 092	597	1 382	1 978	1 819	3 798	10 890
Jun	444	2 223	2 668	1 550	833	372	2 128	7 551	632	1 515	2 147	1 905	4 052	11 603
Jul	363	2 066	2 429	1 657	882	407	2 118	7 493	629	1 549	2 178	2 063	4 241	11 733
Aug	331	1 897	2 228	1 551	876	383	2 035	7 073	606	1 393	1 998	1 961	3 960	11 033
Sep	356	2 016	2 372	1 546	866	397	2 057	7 238	659	1 526	2 185	2 067	4 251	11 489
Oct	351	2 189	2 540	1 591	830	369	2 249	7 579	634	1 600	2 233	2 046	4 279	11 858
Nov	341	2 062	2 403	1 487	837	374	2 153	7 254	624	1 569	2 193	2 016	4 208	11 462
Dec	342	2 067	2 410	1 552	766	327	1 917	6 972	552	1 364	1 917	1 838	3 754	10 726
2016 Jan	304	1 777	2 082	1 269	672	281	1 862	6 165	553	1 243	1 796	1 692	3 488	9 653
Feb	314	2 034	2 348	1 390	729	304	2 029	6 800	651	1 397	2 048	1 893	3 941	10 741
Mar	386	2 289	2 674	1 612	816	347	2 140	7 589	759	1 468	2 227	2 043	4 270	11 859
Apr	325	2 296	2 622	1 380	819	352	2 067	7 239	582	1 464	2 046	1 943	3 989	11 228
May	353	2 264	2 617	1 418	848	364	2 144	7 390	566	1 418	1 985	1 893	3 878	11 267
Jun	417	2 470	2 887	1 343	839	355	2 223	7 647	585	1 515	2 100	1 980	4 080	11 727
Jul	354	2 276	2 630	1 412	907	335	2 171	7 457	551	1 510	2 061	1 952	4 013	11 469
Aug	349	2 231	2 580	1 386	937	336	2 287	7 526	528	1 468	1 996	2 090	4 086	11 612
Sep	375	2 288	2 663	1 428	887	345	2 340	7 663	572	1 527	2 099	2 016	4 115	11 778
Oct	370	2 389	2 758	1 436	812	343	2 327	7 676	549	1 540	2 089	2 015	4 103	11 780
Nov	389	2 342	2 732	1 510	883	330	2 235	7 690	551	1 612	2 163	1 950	4 113	11 803

Users of these data should note that there may be instances where the period on period growths for the same component differ between tables. This is due to the growth rates being calculated at a higher precision than 1 dp within the production system. This accuracy is truncated when transferred into the published tables.

3A.A CONSTRUCTION OUTPUT: VOLUME SEASONALLY ADJUSTED PERCENTAGE CHANGE ON SAME PERIOD A YEAR EARLIER

Index 2013 = 100

	New Housing			Other New Work					Repair and Maintenance				All Repair and Maintena- nce	All Work
	Public housing	Private housing	Total housing	Infra- structure	Excluding Infrastructure			All new work	Housing			Non housing R&M		
					Public	Private industri- al	Private commerci- al		Public housing	Private housing	Total housing			
					MV5H	MV5I	MVM3		MV5J	MV5K	MV5L			
1998	-19.0	1.0	-1.2	-2.8	5.4	1.9	8.4	2.6	-6.6	2.1	-1.5	1.1	-0.2	1.5
1999	-13.3	-10.0	-10.3	-2.8	12.6	3.2	12.0	3.0	-4.1	-1.2	-2.4	-0.6	-1.5	1.3
2000	25.5	11.7	12.9	-6.2	-5.3	-10.7	0.8	0.2	-3.2	0.5	-1.0	5.3	2.1	0.9
2001	2.3	-6.7	-5.8	7.1	0.9	2.2	-0.7	-0.1	-5.4	4.4	0.7	9.2	4.9	1.8
2002	13.2	9.0	9.4	13.1	26.5	-20.7	3.3	6.1	-5.1	8.3	3.4	6.6	5.1	5.7
2003	13.8	24.8	23.6	-5.7	25.5	5.6	-3.6	6.0	13.1	-2.3	2.7	2.8	2.8	4.8
2004	20.1	21.5	21.4	-12.7	12.3	3.0	10.3	9.5	9.7	-2.9	1.4	-4.4	-1.7	5.3
2005	-5.9	2.9	2.0	-4.1	-10.0	-2.0	-4.3	-2.9	-0.6	-8.9	-6.0	2.6	-1.6	-2.4
2006	17.9	0.3	1.9	-7.8	-8.1	8.4	8.5	2.6	-4.3	-6.2	-5.5	0.2	-2.5	0.8
2007	15.5	-1.6	0.2	-1.4	-1.7	-2.4	10.1	3.5	-5.3	-2.5	-3.5	2.3	-0.4	2.2
2008	-9.6	-22.4	-20.8	11.2	11.2	-22.6	1.2	-5.3	2.9	1.1	1.7	3.3	2.6	-2.6
2009	2.0	-31.3	-26.6	14.5	21.0	-29.8	-25.1	-15.3	-2.7	-12.6	-9.3	-9.7	-9.5	-13.2
2010	56.5	21.4	28.2	27.3	31.9	10.9	-2.1	16.3	8.6	9.5	9.4	-14.5	-3.1	8.5
2011	2.2	9.0	7.4	8.4	-7.6	-9.5	2.4	2.4	-8.1	0.8	-2.2	6.7	1.9	2.2
2012	-16.3	-2.4	-5.5	-10.6	-21.0	9.5	-9.8	-9.9	2.2	-4.9	-2.7	-0.4	-1.6	-6.9
2013	6.6	9.4	8.9	2.3	-9.6	-9.2	-	1.0	-4.1	2.3	0.2	4.2	2.1	1.5
2014	30.7	23.6	25.0	-3.6	-1.1	14.1	6.1	9.3	1.6	8.2	6.1	6.6	6.3	8.1
2015	-18.1	8.7	3.3	37.9	-1.9	9.6	1.3	8.5	0.5	2.0	1.6	-3.5	-1.0	4.9

Users of these data should note that there may be instances where the period on period growths for the same component differ between tables. This is due to the growth rates being calculated at a higher precision than 1 dp within the production system. This accuracy is truncated when transferred into the published tables.

3A.Q CONSTRUCTION OUTPUT: VOLUME SEASONALLY ADJUSTED PERCENTAGE CHANGE ON PREVIOUS QUARTER

2013 = 100

	New Housing				Other New Work				Repair and Maintenance					All Repair and Maintena- nce	All Work
	Public housing	Private housing	Total new housing	Infrastr- ucture	Excluding Infrastructure			All new work	Housing			Non housing R&M			
					Public	Private industri- al	Private commerci- al		Public housing	Private housing	Total housing				
	MV54	MV55	MVM7	MV56	MV57	MV58	MV59	MV5A	MV5B	MV5C	MV5D	MV5E	MV5F	MV5G	
2001 Q4	8.4	-0.1	0.8	-3.3	6.6	-10.9	5.0	1.0	2.8	0.4	1.3	5.8	3.6	2.0	
2002 Q1	3.4	0.5	0.9	11.0	4.5	-12.6	-0.7	1.2	-3.8	1.4	-0.5	1.9	0.8	1.0	
Q2	-2.3	-0.5	-0.7	2.1	7.5	-6.1	0.1	0.6	-2.2	6.4	3.3	-1.4	0.8	0.7	
Q3	5.5	8.7	8.3	6.4	7.7	5.9	1.5	5.0	-1.4	3.0	1.5	0.8	1.1	3.5	
Q4	-1.2	6.3	5.5	-6.4	4.1	-0.9	-	0.4	3.8	5.4	4.9	2.5	3.6	1.6	
2003 Q1	4.3	4.8	4.8	-0.4	3.8	1.2	-5.4	-0.5	-1.6	-14.8	-10.6	-0.1	-5.1	-2.2	
Q2	4.1	3.1	3.2	-1.9	6.8	-0.1	-1.2	0.8	11.3	11.0	11.2	1.6	5.9	2.7	
Q3	5.3	8.6	8.3	-4.5	7.4	4.0	1.4	3.1	10.1	-1.8	2.4	1.0	1.6	2.6	
Q4	7.3	9.5	9.3	-1.7	7.8	6.9	4.8	5.6	-3.2	-0.8	-1.7	-2.6	-2.2	2.7	
2004 Q1	9.3	6.2	6.5	-5.2	3.6	1.2	5.1	3.6	7.1	1.6	3.5	2.0	2.7	3.3	
Q2	2.6	1.6	1.7	-1.5	-0.8	-4.0	2.3	0.8	-3.2	-7.3	-5.9	-6.7	-6.3	-1.8	
Q3	-1.2	1.5	1.3	-3.4	-2.2	-2.5	-0.5	-0.7	-1.7	2.5	0.9	-2.0	-0.6	-0.6	
Q4	-2.6	0.5	0.2	-5.0	-2.9	-3.1	-2.3	-2.0	3.6	-4.2	-1.4	2.9	0.8	-1.0	
2005 Q1	-4.0	0.6	0.2	2.1	-1.8	-1.7	-1.6	-0.7	4.4	-2.3	0.1	6.0	3.1	0.7	
Q2	-1.9	2.6	2.2	-2.5	-3.1	3.9	-0.7	-	-0.6	-3.0	-2.1	-2.0	-2.1	-0.7	
Q3	-2.1	-1.6	-1.6	1.9	-4.8	1.9	-2.1	-1.5	-10.1	-0.8	-4.3	-1.5	-2.8	-2.0	
Q4	9.9	-1.4	-0.4	3.0	-2.0	2.2	0.9	0.5	-1.5	-1.5	-1.5	-1.7	-1.6	-0.2	
2006 Q1	5.0	-0.5	0.1	-3.5	-0.8	4.8	4.2	1.5	0.3	-0.1	0.1	0.3	0.2	1.0	
Q2	4.9	1.4	1.7	-7.2	-2.5	-1.4	2.2	0.2	-0.8	-1.6	-1.4	4.3	1.7	0.7	
Q3	4.1	1.5	1.8	-2.9	-1.5	0.3	4.2	1.8	6.5	-4.9	-1.0	-3.4	-2.3	0.3	
Q4	1.5	0.9	1.0	-0.3	-0.9	2.9	3.9	2.0	-2.0	-1.1	-1.5	4.2	1.6	1.8	
2007 Q1	10.5	-	1.1	-1.4	-0.4	1.3	1.9	1.1	-0.4	2.4	1.4	1.8	1.6	1.2	
Q2	2.1	-2.0	-1.5	1.8	0.2	-0.7	2.1	0.5	-7.3	0.9	-2.0	-2.6	-2.4	-0.5	
Q3	-2.0	-2.1	-2.1	2.9	1.0	-6.4	-0.3	-0.9	-3.6	-4.7	-4.4	-1.0	-2.6	-1.5	
Q4	-1.5	-3.3	-3.1	3.4	0.4	-7.5	3.6	0.4	4.3	2.8	3.3	2.4	2.8	1.2	
2008 Q1	-4.2	-5.0	-4.9	4.0	5.6	-1.5	2.8	0.7	0.4	-0.3	-0.1	3.6	1.9	1.1	
Q2	-1.4	-9.3	-8.3	3.9	2.6	-10.7	-3.5	-3.8	6.6	2.8	4.1	4.1	4.1	-1.1	
Q3	-2.5	-11.3	-10.1	2.5	4.4	-7.1	0.1	-2.3	-2.2	-4.2	-3.5	-4.1	-3.8	-2.8	
Q4	-7.6	-13.7	-12.8	-6.9	0.5	-11.5	-7.9	-8.2	-2.5	6.7	3.5	-6.8	-2.1	-5.9	
2009 Q1	-6.5	-11.9	-11.1	2.1	1.2	-13.9	-9.4	-7.1	-6.7	-13.3	-11.1	-3.3	-7.1	-7.1	
Q2	4.7	-3.9	-2.5	9.0	8.7	-6.8	-6.1	-1.0	4.3	-3.8	-1.0	-2.5	-1.8	-1.3	
Q3	17.6	-5.1	-1.0	6.9	11.6	-1.4	-10.5	-1.5	7.2	6.8	6.9	7.6	7.3	1.8	
Q4	16.4	4.8	7.3	18.2	9.8	6.9	-8.5	3.8	-4.2	-11.7	-9.0	-8.5	-8.7	-1.2	
2010 Q1	18.8	8.9	11.1	9.0	11.3	3.1	9.1	9.7	5.8	7.4	6.9	-15.5	-4.9	4.0	
Q2	4.1	10.0	8.6	4.7	4.9	2.4	2.8	4.9	4.8	8.3	7.1	7.3	7.2	5.7	
Q3	11.0	7.6	8.4	-5.4	-3.1	17.0	5.8	3.0	-3.2	6.7	3.2	-2.0	0.8	2.2	
Q4	-2.1	-0.5	-0.9	-9.9	3.6	-18.7	-5.3	-4.1	-2.1	-1.6	-1.8	2.2	-	-2.6	
2011 Q1	4.3	2.0	2.5	13.7	1.1	-3.7	-1.2	2.7	-4.8	-3.4	-3.9	2.8	-0.8	1.4	
Q2	-4.5	0.9	-0.4	10.0	-8.5	3.4	4.2	1.6	0.7	-0.7	-0.3	-0.3	-0.3	0.9	
Q3	-4.1	2.4	0.9	-4.7	-6.7	-2.8	1.8	-1.5	-4.1	-0.3	-1.6	2.8	0.6	-0.8	
Q4	-4.3	-2.3	-2.7	0.3	-5.5	0.6	1.2	-1.2	0.6	4.6	3.4	0.9	2.2	-	
2012 Q1	-3.8	4.1	2.4	-9.9	-4.2	7.5	-8.7	-4.6	0.2	-3.0	-2.0	-1.1	-1.6	-3.5	
Q2	-11.5	-8.1	-8.8	-6.9	-8.0	0.2	-0.4	-5.2	3.2	-4.4	-2.0	-0.6	-1.3	-3.8	
Q3	4.5	-1.6	-0.4	7.9	-3.7	-0.4	-7.9	-1.8	2.3	-1.8	-0.5	-2.2	-1.3	-1.6	
Q4	-1.6	4.1	2.9	2.6	-4.2	8.5	1.5	1.7	-0.2	-3.0	-2.1	1.1	-0.5	0.8	
2013 Q1	-0.8	-0.6	-0.6	-2.7	-3.1	-7.2	1.1	-1.3	-3.5	3.2	0.9	1.0	1.0	-0.4	
Q2	4.9	8.7	7.9	-0.4	1.5	-9.2	-0.4	1.8	-2.5	2.4	0.7	2.6	1.7	1.7	
Q3	6.0	3.5	3.9	0.2	1.8	-1.0	6.3	3.4	-1.8	3.1	1.5	2.3	1.9	2.8	
Q4	10.8	5.9	6.8	4.9	-6.1	-2.4	-2.5	1.3	1.9	0.8	1.1	1.6	1.4	1.3	
2014 Q1	9.1	7.1	7.5	-7.7	-0.5	11.8	4.0	2.5	1.6	5.8	4.5	0.1	2.3	2.4	
Q2	6.4	3.4	4.0	-3.8	2.7	10.8	0.6	1.7	0.5	-1.2	-0.7	4.4	1.8	1.7	
Q3	6.1	7.3	7.0	4.1	1.7	-	0.2	3.4	0.2	2.4	1.7	0.8	1.2	2.6	
Q4	-4.5	1.2	-	6.8	0.3	-3.5	1.6	1.5	-1.4	-2.6	-2.3	-1.3	-1.8	0.3	
2015 Q1	-7.7	1.2	-0.6	28.7	-4.8	8.2	-1.0	4.6	1.8	-0.7	0.1	-1.1	-0.5	2.7	
Q2	-5.9	2.7	1.2	3.4	1.1	-1.5	1.1	1.5	-0.2	4.7	3.2	-5.0	-1.0	0.6	
Q3	-15.5	-2.4	-4.6	-1.0	0.3	9.6	-1.8	-1.8	0.6	0.7	0.7	0.7	0.7	-0.9	
Q4	-2.0	5.0	4.0	-4.0	0.9	-7.5	3.8	1.1	-2.5	0.2	-0.6	2.1	0.7	1.0	
2016 Q1	4.2	6.8	6.4	-1.1	0.8	-10.2	2.7	2.2	-0.2	-	-	-2.0	-1.0	1.1	
Q2	-2.7	0.7	0.2	-6.1	3.6	7.4	2.4	0.2	-2.6	0.2	-0.6	2.6	1.0	0.5	
Q3	3.3	0.8	1.2	-0.3	-1.5	-3.6	0.4	0.1	-7.8	0.3	-2.1	-3.1	-2.6	-0.8	

Users of these data should note that there may be instances where the period on period growths for the same component differ between tables. This is due to the growth rates being calculated at a higher precision than 1 dp within the production system. This accuracy is truncated when transferred into the published tables.

3A.M CONSTRUCTION OUTPUT: VOLUME SEASONALLY ADJUSTED PERCENTAGE CHANGE ON PREVIOUS MONTH

Index 2013 = 100

	New Housing				Other New Work				Repair and Maintenance					All Repair and Maintena- nce	All Work	
	Public housing		Private housing		Excluding Infrastructure		Private commercial		Housing			Non housing R&M				
	MV4O	MV4P	MVM2	MV4Q	MV4R	MV4S	MV4T	MV4U	MV4V	MV4X	MV4Y	MV4Z	MV52			MV53
	Total new housing	Infra-structure	Public	Private industrial	Private commercial	All new work	Public housing	Private housing	Total housing	Non housing R&M						
2011 Feb	-0.4	1.0	0.7	2.6	0.2	-5.5	-2.5	-0.3	11.7	-2.9	1.6	-1.3	0.2	-0.1		
Mar	3.1	2.6	2.7	1.5	-4.3	-0.1	3.0	1.1	1.4	1.2	1.3	3.5	2.4	1.5		
Apr	-6.0	-4.9	-5.1	6.1	-4.0	3.7	2.4	-0.1	-3.0	1.5	-	-1.4	-0.7	-0.3		
May	2.1	3.2	2.9	3.2	-2.7	0.4	-0.7	0.7	-2.5	-4.0	-3.5	-0.5	-2.1	-0.3		
Jun	-5.2	5.3	2.8	-0.7	-0.3	4.3	3.3	1.8	2.6	1.8	2.0	-1.0	0.6	1.3		
Jul	-5.2	0.1	-1.0	-0.3	-1.6	-7.2	0.1	-0.9	-3.7	-0.3	-1.4	4.4	1.4	-0.1		
Aug	1.5	-2.1	-1.4	-7.8	-5.7	0.9	-1.5	-3.4	-1.1	-0.4	-0.6	-0.9	-0.7	-2.4		
Sep	9.2	-2.3	0.1	0.7	-1.1	3.7	2.1	0.8	-1.8	1.5	0.4	-0.2	0.1	0.6		
Oct	-9.8	-1.8	-3.7	-5.5	-7.0	2.7	-0.8	-3.3	1.3	4.0	3.1	-1.5	0.9	-1.8		
Nov	1.9	2.0	2.0	6.9	1.1	-3.0	0.5	2.1	0.4	-0.3	-0.1	1.4	0.6	1.6		
Dec	-4.3	1.3	0.1	11.0	11.1	-8.3	2.1	4.3	2.1	-0.1	0.6	5.7	3.1	3.8		
2012 Jan	8.4	1.2	2.7	-12.0	-6.6	10.5	-8.5	-5.3	-2.3	-4.9	-4.1	-7.8	-5.9	-5.5		
Feb	-11.7	-0.3	-2.8	-8.2	-5.7	3.7	-5.4	-4.9	1.6	2.9	2.5	3.8	3.1	-2.0		
Mar	-4.7	4.3	2.6	-2.8	-2.5	5.1	5.8	1.8	-0.2	0.6	0.3	1.0	0.7	1.4		
Apr	3.1	-10.5	-8.0	0.4	-0.5	-1.1	-1.7	-2.9	0.8	-4.7	-3.0	-3.1	-3.0	-3.0		
May	-7.0	1.2	-0.5	-4.8	-1.7	-3.0	1.7	-0.9	5.0	2.9	3.6	2.0	2.8	0.5		
Jun	-8.4	-2.6	-3.8	1.4	-8.9	-3.5	-5.1	-4.0	-4.0	-8.6	-7.1	-2.0	-4.6	-4.3		
Jul	17.9	-1.0	2.5	-	3.3	5.6	-5.2	-0.2	3.5	10.5	8.1	0.4	4.3	1.5		
Aug	-6.0	-2.3	-3.1	15.4	0.4	-5.3	1.0	2.2	-0.9	-7.7	-5.5	-3.6	-4.6	-0.5		
Sep	1.5	7.1	6.0	-3.8	-0.9	3.9	-1.8	0.3	1.6	-4.5	-2.4	1.6	-0.4	-		
Oct	-2.5	-0.1	-0.6	1.0	-1.0	6.1	1.7	0.7	-0.4	1.2	0.6	-0.6	-	0.5		
Nov	0.6	1.9	1.6	1.7	-1.8	1.3	-0.3	0.5	0.7	1.8	1.4	5.3	3.3	1.6		
Dec	5.0	-2.7	-1.2	-4.5	-4.8	2.2	2.8	-1.0	-3.0	1.2	-0.3	-4.5	-2.4	-1.6		
2013 Jan	-5.0	-3.0	-3.4	-4.0	-2.6	-7.6	0.4	-2.5	-3.5	1.2	-0.4	0.8	0.2	-1.5		
Feb	1.7	6.9	5.8	4.6	5.0	1.6	-1.7	2.8	3.9	0.7	1.8	3.2	2.5	2.7		
Mar	-0.8	-2.3	-2.0	2.5	0.1	-7.1	0.5	-0.3	-2.3	0.4	-0.5	-1.2	-0.9	-0.5		
Apr	2.1	6.5	5.6	-5.0	-1.9	-2.3	-0.5	-	1.8	-0.8	0.1	0.8	0.4	0.2		
May	3.2	-0.9	-0.2	-0.3	3.7	-2.2	1.1	0.6	-5.2	3.1	0.3	1.5	0.9	0.7		
Jun	1.8	6.1	5.3	5.6	-2.0	-4.1	-1.0	1.9	-1.7	1.9	0.7	1.7	1.2	1.6		
Jul	2.7	-2.0	-1.2	-2.8	0.7	-0.1	3.6	0.3	-3.2	-0.3	-1.2	-1.2	-1.2	-0.3		
Aug	0.6	3.0	2.5	2.3	-0.5	10.8	2.5	2.4	7.9	1.6	3.6	4.3	3.9	3.0		
Sep	1.5	-0.4	-	-6.1	4.5	-11.9	3.6	-0.1	-2.4	0.2	-0.6	-2.7	-1.7	-0.7		
Oct	9.3	3.8	4.8	11.2	-8.9	-0.8	-3.6	1.2	2.1	0.5	1.0	3.4	2.2	1.5		
Nov	1.2	-0.4	-	-3.1	0.4	3.9	-3.7	-1.6	-2.2	1.2	0.1	-2.3	-1.1	-1.4		
Dec	-2.0	4.6	3.2	-0.7	0.3	3.2	1.2	1.4	1.2	-3.3	-1.9	0.9	-0.5	0.7		
2014 Jan	6.4	7.8	7.5	-4.8	0.4	1.8	2.3	2.3	6.0	6.4	6.2	0.6	3.4	2.7		
Feb	3.7	-6.9	-4.9	-0.4	-2.9	6.6	0.7	-1.6	-6.2	2.6	-0.2	-0.8	-0.5	-1.2		
Mar	3.1	3.8	3.7	-4.1	2.3	5.3	5.0	2.5	-0.1	-1.1	-0.8	0.8	-	1.5		
Apr	-5.6	2.1	0.5	-1.0	5.6	2.0	-1.4	0.3	4.1	0.8	1.8	3.9	2.8	1.3		
May	12.3	1.2	3.4	2.7	-5.7	4.1	-1.8	0.5	-2.6	-2.4	-2.5	-0.8	-1.6	-0.3		
Jun	2.4	1.2	1.5	-5.1	1.6	0.1	-0.9	-0.5	1.6	-1.3	-0.4	2.4	1.0	0.1		
Jul	-1.0	5.7	4.3	6.1	1.0	-3.2	1.6	3.0	-0.1	2.4	1.6	-2.1	-0.3	1.7		
Aug	2.9	-	0.6	-0.8	3.4	2.6	-1.3	0.2	0.9	4.8	3.6	2.3	2.9	1.2		
Sep	-1.0	1.0	0.6	4.0	-1.8	0.2	2.2	1.3	-1.3	-4.4	-3.5	0.2	-1.6	0.2		
Oct	-3.0	-0.7	-1.2	0.4	0.8	-4.0	-2.8	-1.3	-2.1	-0.3	-0.9	-2.4	-1.6	-1.4		
Nov	-3.2	3.0	1.8	4.9	-0.1	-3.8	3.7	2.4	3.7	-1.0	0.4	1.5	1.0	1.9		
Dec	0.9	-2.3	-1.7	2.0	-0.9	6.3	2.9	0.8	-3.3	-0.7	-1.5	-2.3	-1.9	-0.2		
2015 Jan	-7.8	4.2	1.8	23.0	-5.0	9.9	-3.0	3.9	2.8	-0.2	0.7	0.1	0.4	2.6		
Feb	2.5	-4.7	-3.4	-0.1	2.4	-4.0	0.1	-1.1	-1.6	-2.0	-1.9	-3.3	-2.6	-1.6		
Mar	-3.4	2.6	1.5	5.3	-2.3	-4.9	-3.2	0.3	3.7	5.0	4.6	6.3	5.4	2.1		
Apr	3.5	2.8	3.0	3.0	0.7	4.8	1.0	2.3	-4.5	1.3	-0.5	-7.0	-3.8	0.1		
May	-10.6	1.2	-0.9	-3.2	-	-3.3	1.6	-0.8	3.7	-	1.1	-0.5	0.3	-0.4		
Jun	-2.2	-3.0	-2.8	-2.4	3.7	2.5	3.5	-	0.3	2.0	1.5	-1.3	0.1	-		
Jul	-6.2	-0.8	-1.7	4.3	-1.6	13.3	-3.2	-	-1.3	-0.5	-0.7	4.0	1.5	0.5		
Aug	-8.7	-0.4	-1.7	-2.1	-1.3	-5.6	-0.3	-1.6	-0.3	-1.1	-0.9	-5.1	-2.9	-2.0		
Sep	3.2	0.6	1.0	-3.2	1.3	-0.2	-3.6	-1.3	2.1	1.9	2.0	4.0	2.9	0.2		
Oct	-2.0	2.2	1.6	-0.1	-2.1	-2.1	6.5	1.9	-3.0	0.7	-0.4	0.2	-0.1	1.2		
Nov	-2.1	-0.2	-0.5	-6.2	2.9	-1.4	-0.4	-1.4	-2.5	-0.9	-1.3	1.0	-0.2	-1.0		
Dec	7.7	7.9	7.9	10.1	2.0	-7.9	0.8	4.8	2.6	-2.5	-1.0	1.0	-	3.0		
2016 Jan	2.0	-1.0	-0.6	-3.7	2.2	0.6	3.4	0.2	-1.7	3.3	1.8	-1.7	0.1	0.2		
Feb	-5.5	4.5	3.0	-0.6	-2.4	-13.1	0.6	0.2	1.5	-2.3	-1.2	0.9	-0.2	0.1		
Mar	5.5	-0.9	-0.1	-3.4	-6.0	12.3	-4.5	-2.2	-1.0	0.8	0.3	-5.5	-2.5	-2.3		
Apr	-8.8	1.4	-	-2.1	10.4	7.2	5.2	2.5	0.2	1.2	0.9	7.9	4.2	3.1		
May	5.3	-2.4	-1.4	0.5	-0.3	-3.5	-	-0.6	-3.5	-1.6	-2.1	-2.3	-2.2	-1.2		
Jun	4.1	0.2	0.7	-6.0	-3.4	-0.8	0.4	-1.3	-1.2	1.0	0.3	0.2	0.3	-0.7		
Jul	-1.4	1.5	1.1	5.5	2.9	-1.7	-1.1	1.4	-3.1	0.1	-0.9	-1.7	-1.3	0.4		
Aug	-0.9	-	-0.1	-4.3	-2.7	-2.7	1.2	-1.0	-6.5	0.1	-1.7	-0.6	-1.2	-1.1		
Sep	2.8	0.2	0.5	3.7	-0.4	4.8	1.2	1.4	4.5	-	1.2	-1.4	-0.1	0.9		
Oct	-2.0	0.3	-	-1.4	-4.8	1.2	-1.4	-1.2	-1.4	-1.5	-1.5	2.5	0.5	-0.6		
Nov	5.5	0.6	1.2	1.2	6.0	-6.0	-2.6	0.3	-2.3	2.3	1.0	-3.3	-1.1	-0.2		

Users of these data should note that there may be instances where the period on period growths for the same component differ between tables. This is due to the growth rates being calculated at a higher precision than 1 dp within the production system. This accuracy is truncated when transferred into the published tables.

3B.A CONSTRUCTION OUTPUT: VOLUME SEASONALLY ADJUSTED PERCENTAGE CHANGE ON SAME PERIOD A YEAR EARLIER BY SECTOR

Index 2013 = 100

	New Housing			Other New Work				Repair and Maintenance					All Repair and Maintena- nce	All Work
	Public housing	Private housing	Total new housing	Infra- structure	Excluding Infrastructure			All new work	Housing			Non housing R&M		
					Public	Private industri- al	Private commerci- al		Public housing	Private housing	Total housing			
	MV5H	MV5I	MVM3	MV5J	MV5K	MV5L	MV5M	MV5N	MV5O	MV5P	MV5Q	MV5R	MV5S	MV5T
1998	-19.0	1.0	-1.2	-2.8	5.4	1.9	8.4	2.6	-6.6	2.1	-1.5	1.1	-0.2	1.5
1999	-13.3	-10.0	-10.3	-2.8	12.6	3.2	12.0	3.0	-4.1	-1.2	-2.4	-0.6	-1.5	1.3
2000	25.5	11.7	12.9	-6.2	-5.3	-10.7	0.8	0.2	-3.2	0.5	-1.0	5.3	2.1	0.9
2001	2.3	-6.7	-5.8	7.1	0.9	2.2	-0.7	-0.1	-5.4	4.4	0.7	9.2	4.9	1.8
2002	13.2	9.0	9.4	13.1	26.5	-20.7	3.3	6.1	-5.1	8.3	3.4	6.6	5.1	5.7
2003	13.8	24.8	23.6	-5.7	25.5	5.6	-3.6	6.0	13.1	-2.3	2.7	2.8	2.8	4.8
2004	20.1	21.5	21.4	-12.7	12.3	3.0	10.3	9.5	9.7	-2.9	1.4	-4.4	-1.7	5.3
2005	-5.9	2.9	2.0	-4.1	-10.0	-2.0	-4.3	-2.9	-0.6	-8.9	-6.0	2.6	-1.6	-2.4
2006	17.9	0.3	1.9	-7.8	-8.1	8.4	8.5	2.6	-4.3	-6.2	-5.5	0.2	-2.5	0.8
2007	15.5	-1.6	0.2	-1.4	-1.7	-2.4	10.1	3.5	-5.3	-2.5	-3.5	2.3	-0.4	2.2
2008	-9.6	-22.4	-20.8	11.2	11.2	-22.6	1.2	-5.3	2.9	1.1	1.7	3.3	2.6	-2.6
2009	2.0	-31.3	-26.6	14.5	21.0	-29.8	-25.1	-15.3	-2.7	-12.6	-9.3	-9.7	-9.5	-13.2
2010	56.5	21.4	28.2	27.3	31.9	10.9	-2.1	16.3	8.6	9.5	9.4	-14.5	-3.1	8.5
2011	2.2	9.0	7.4	8.4	-7.6	-9.5	2.4	2.4	-8.1	0.8	-2.2	6.7	1.9	2.2
2012	-16.3	-2.4	-5.5	-10.6	-21.0	9.5	-9.8	-9.9	2.2	-4.9	-2.7	-0.4	-1.6	-6.9
2013	6.6	9.4	8.9	2.3	-9.6	-9.2	-	1.0	-4.1	2.3	0.2	4.2	2.1	1.5
2014	30.7	23.6	25.0	-3.6	-1.1	14.1	6.1	9.3	1.6	8.2	6.1	6.6	6.3	8.1
2015	-18.1	8.7	3.3	37.9	-1.9	9.6	1.3	8.5	0.5	2.0	1.6	-3.5	-1.0	4.9

Users of these data should note that there may be instances where the period on period growths for the same component differ between tables. This is due to the growth rates being calculated at a higher precision than 1 dp within the production system. This accuracy is truncated when transferred into the published tables.

3B.Q CONSTRUCTION OUTPUT: VOLUME SEASONALLY ADJUSTED PERCENTAGE CHANGE ON SAME PERIOD A YEAR EARLIER

Index 2013 = 100

	New Housing				Other New Work				Repair and Maintenance					All Repair and Maintena- nce	All Work
	Public housing	Private housing	Total new housing	Infrast- ructure	Excluding Infrastructure			All new work	Housing			Non housing R&M			
					Public	Private industri- al	Private commerci- al		Public housing	Private housing	Total housing				
	MV68	MV69	MVM8	MV6A	MV6B	MV6C	MV6D	MV6E	MV6F	MV6G	MV6H	MV6I	MV6J	MV6K	
2001 Q4	5.0	-2.0	-1.3	4.1	13.8	-6.1	3.2	2.3	2.6	5.7	4.5	7.7	6.2	3.8	
2002 Q1	30.1	7.9	10.1	13.7	26.9	-18.3	1.7	5.7	-4.4	-1.0	-2.2	10.7	4.3	5.2	
Q2	4.9	3.5	3.7	9.4	24.1	-27.1	4.7	3.7	-7.7	5.7	0.8	5.0	3.0	3.4	
Q3	15.7	8.6	9.4	16.5	29.1	-22.5	6.0	7.9	-4.6	11.6	5.7	7.2	6.5	7.4	
Q4	5.4	15.6	14.4	12.8	26.0	-13.9	1.0	7.2	-3.7	17.1	9.4	3.8	6.4	6.9	
2003 Q1	6.3	20.5	18.9	1.2	25.2	-0.3	-3.8	5.4	-1.4	-1.6	-1.7	1.7	0.2	3.5	
Q2	13.2	24.9	23.6	-2.7	24.3	6.1	-5.0	5.7	12.1	2.7	5.8	4.8	5.3	5.5	
Q3	12.9	24.8	23.5	-12.6	23.9	4.3	-5.2	3.8	25.2	-2.0	6.7	5.0	5.8	4.5	
Q4	22.7	28.5	27.9	-8.3	28.3	12.4	-0.6	9.2	16.8	-7.8	-	-0.2	-0.1	5.7	
2004 Q1	28.6	30.3	30.1	-12.7	28.0	12.4	10.4	13.7	27.1	9.9	15.8	1.9	8.2	11.7	
Q2	26.7	28.3	28.2	-12.4	18.9	8.0	14.3	13.7	10.6	-8.3	-2.0	-6.4	-4.3	6.8	
Q3	19.0	19.9	19.8	-11.4	8.3	1.2	12.2	9.5	-1.3	-4.3	-3.4	-9.1	-6.4	3.5	
Q4	8.0	10.1	9.9	-14.4	-2.4	-8.2	4.6	1.7	5.6	-7.6	-3.1	-3.9	-3.5	-0.2	
2005 Q1	-5.2	4.3	3.3	-7.7	-7.5	-10.8	-2.2	-2.5	3.0	-11.1	-6.3	-0.2	-3.1	-2.8	
Q2	-9.4	5.3	3.8	-8.6	-9.6	-3.5	-5.1	-3.3	5.8	-7.0	-2.6	4.8	1.2	-1.7	
Q3	-10.2	2.1	0.8	-3.6	-12.0	0.9	-6.6	-4.1	-3.3	-9.9	-7.6	5.3	-1.0	-3.0	
Q4	1.2	0.1	0.2	4.4	-11.2	6.4	-3.5	-1.6	-8.0	-7.4	-7.7	0.6	-3.4	-2.2	
2006 Q1	10.8	-1.0	0.1	-1.3	-10.3	13.5	2.2	0.5	-11.6	-5.4	-7.7	-4.8	-6.2	-1.9	
Q2	18.5	-2.1	-0.3	-6.1	-9.8	7.7	5.1	0.6	-11.9	-4.0	-6.9	1.3	-2.6	-0.5	
Q3	26.1	1.0	3.2	-10.4	-6.6	6.0	11.8	3.9	4.4	-8.0	-3.7	-0.6	-2.1	1.8	
Q4	16.5	3.4	4.7	-13.3	-5.6	6.7	15.2	5.5	3.8	-7.6	-3.7	5.3	1.1	3.9	
2007 Q1	22.5	3.9	5.8	-11.4	-5.3	3.1	12.7	5.1	3.0	-5.3	-2.4	7.0	2.5	4.2	
Q2	19.2	0.4	2.4	-2.8	-2.6	3.8	12.7	5.4	-3.7	-2.9	-3.1	-0.2	-1.6	3.0	
Q3	12.2	-3.2	-1.5	3.0	-	-3.2	7.8	2.7	-12.8	-2.7	-6.4	2.3	-1.8	1.1	
Q4	8.9	-7.3	-5.5	6.9	1.3	-13.0	7.5	1.1	-7.1	1.2	-1.9	0.5	-0.7	0.5	
2008 Q1	-5.6	-11.9	-11.2	12.7	7.4	-15.4	8.5	0.6	-6.3	-1.5	-3.3	2.2	-0.4	0.3	
Q2	-8.8	-18.5	-17.3	14.9	10.0	-23.9	2.4	-3.8	7.7	0.3	2.8	9.2	6.2	-0.4	
Q3	-9.3	-26.1	-24.0	14.4	13.7	-24.4	2.9	-5.1	9.3	0.9	3.7	5.8	4.8	-1.7	
Q4	-14.9	-34.0	-31.6	3.1	13.8	-27.6	-8.6	-13.1	2.1	4.8	3.9	-3.7	-0.1	-8.7	
2009 Q1	-16.9	-38.9	-36.1	1.2	9.1	-36.7	-19.4	-19.9	-5.1	-8.8	-7.6	-10.1	-9.0	-16.1	
Q2	-11.8	-35.3	-32.1	6.3	15.5	-34.0	-21.5	-17.5	-7.2	-14.7	-12.1	-15.7	-14.1	-16.2	
Q3	6.4	-30.7	-25.2	10.8	23.5	-29.9	-29.8	-16.8	1.6	-4.9	-2.7	-5.5	-4.2	-12.2	
Q4	34.0	-15.8	-7.9	40.7	34.9	-15.4	-30.3	-6.0	-0.2	-21.3	-14.4	-7.2	-10.7	-7.8	
2010 Q1	70.2	4.2	15.1	50.2	48.3	1.3	-16.1	11.0	13.3	-2.5	2.9	-18.9	-8.5	3.2	
Q2	69.4	19.3	28.2	44.2	43.1	11.3	-8.3	17.6	13.9	9.7	11.3	-10.8	-0.2	10.5	
Q3	59.9	35.2	40.4	27.6	24.3	32.0	8.4	23.0	2.9	9.7	7.5	-18.7	-6.2	11.0	
Q4	34.4	28.3	29.7	-2.8	17.3	0.4	12.2	13.7	5.2	22.2	16.0	-9.2	2.8	9.4	
2011 Q1	18.1	20.1	19.6	1.4	6.5	-6.2	1.6	6.5	-5.5	9.8	4.3	10.5	7.2	6.7	
Q2	8.3	10.1	9.7	6.5	-7.1	-5.3	3.1	3.1	-9.2	0.6	-2.8	2.7	-0.3	1.9	
Q3	-6.5	4.8	2.1	7.3	-10.6	-21.3	-0.8	-1.4	-10.1	-6.0	-7.3	7.7	-0.5	-1.1	
Q4	-8.6	2.9	0.2	19.5	-18.4	-2.6	6.0	1.6	-7.6	-	-2.5	6.4	1.6	1.6	
2012 Q1	-15.7	5.0	0.1	-5.3	-22.7	8.7	-2.0	-5.6	-2.7	0.4	-0.6	2.4	0.8	-3.3	
Q2	-21.9	-4.4	-8.3	-19.9	-22.3	5.3	-6.4	-12.0	-0.3	-3.3	-2.3	2.0	-0.3	-7.8	
Q3	-14.8	-8.1	-9.5	-9.3	-19.7	7.9	-15.3	-12.2	6.4	-4.8	-1.2	-3.0	-2.1	-8.6	
Q4	-12.4	-2.0	-4.3	-7.1	-18.7	16.4	-15.0	-9.7	5.5	-11.8	-6.4	-2.8	-4.6	-7.9	
2013 Q1	-9.7	-6.4	-7.1	0.3	-17.8	0.5	-5.9	-6.6	1.6	-6.1	-3.6	-0.7	-2.2	-4.9	
Q2	7.0	10.7	9.9	7.4	-9.2	-8.8	-5.9	0.4	-4.0	0.6	-0.9	2.5	0.8	0.5	
Q3	8.5	16.3	14.8	-0.3	-4.1	-9.4	8.6	5.6	-7.8	5.7	1.0	7.2	4.1	5.0	
Q4	22.1	18.3	19.1	1.9	-6.0	-18.5	4.3	5.3	-5.9	9.8	4.3	7.7	6.0	5.5	
2014 Q1	34.4	27.5	28.8	-3.4	-3.5	-1.8	7.3	9.3	-0.9	12.5	8.0	6.8	7.4	8.6	
Q2	36.3	21.4	24.2	-6.8	-2.4	19.8	8.4	9.2	2.1	8.6	6.5	8.6	7.6	8.5	
Q3	36.4	25.8	27.9	-3.1	-2.5	20.9	2.2	9.2	4.3	7.8	6.7	7.0	6.8	8.3	
Q4	17.7	20.2	19.7	-1.3	4.2	19.5	6.6	9.5	0.9	4.1	3.1	3.9	3.5	7.2	
2015 Q1	-0.5	13.6	10.7	37.6	-0.3	15.6	1.4	11.7	1.1	-2.2	-1.2	2.7	0.7	7.5	
Q2	-12.0	12.8	7.7	48.0	-1.8	2.8	1.9	11.5	0.4	3.6	2.6	-6.5	-2.0	6.3	
Q3	-30.0	2.6	-4.0	40.7	-3.1	12.7	-0.2	5.9	0.8	1.9	1.6	-6.6	-2.5	2.7	
Q4	-28.1	6.5	-0.2	26.5	-2.5	8.0	2.0	5.4	-0.4	4.9	3.3	-3.4	-0.1	3.4	
2016 Q1	-18.8	12.4	6.8	-2.8	3.2	-10.4	5.7	3.1	-2.3	5.7	3.2	-4.3	-0.6	1.8	
Q2	-16.0	10.2	5.8	-11.7	5.8	-2.3	7.1	1.7	-4.7	1.2	-0.6	3.4	1.3	1.6	
Q3	2.8	13.8	12.2	-11.1	3.9	-14.0	9.5	3.7	-12.7	0.7	-3.3	-0.5	-2.0	1.7	

Users of these data should note that there may be instances where the period on period growths for the same component differ between tables. This is due to the growth rates being calculated at a higher precision than 1 dp within the production system. This accuracy is truncated when transferred into the published tables.

3B.M CONSTRUCTION OUTPUT: VOLUME SEASONALLY ADJUSTED PERCENTAGE CHANGE ON SAME PERIOD A YEAR EARLIER

Index 2013 = 100

	New Housing			Other New Work				Repair and Maintenance					All Repair and Maintena- nce	All Work
	Public housing	Private housing	Total new housing	Excluding Infrastructure			Housing			Non housing R&M				
				Infra- structure	Public	Private industri- al	Private commerci- al	All new work	Public housing		Private housing	Total housing		
MV4W	MV5U	MVM4	MV5V	MV5W	MV5X	MV5Y	MV5Z	MV62	MV63	MV64	MV65	MV66	MV67	
2011 Feb	7.2	16.9	14.5	1.8	10.0	-5.5	-2.6	4.7	-4.5	5.9	2.2	8.0	4.9	4.8
Mar	17.5	14.8	15.5	-0.2	-2.3	-9.6	2.7	3.7	3.7	9.2	7.3	11.1	9.1	5.6
Apr	7.9	7.0	7.3	7.2	-6.4	-1.5	5.3	3.6	-5.5	5.5	1.7	5.2	3.3	3.5
May	7.5	6.7	6.9	6.9	-7.7	-1.3	0.3	1.7	-10.6	-2.3	-5.2	4.7	-0.6	0.9
Jun	9.6	16.8	15.1	5.5	-7.2	-12.0	3.8	4.0	-11.4	-1.2	-4.8	-1.6	-3.3	1.3
Jul	-8.7	11.2	6.4	12.5	-6.8	-24.3	0.7	1.6	-10.1	-3.7	-5.9	12.7	2.4	1.9
Aug	-10.7	3.2	-0.1	2.6	-12.3	-27.4	-5.5	-5.0	-9.3	-6.7	-7.5	5.7	-1.5	-3.8
Sep	-	0.3	0.2	6.9	-12.7	-10.5	2.5	-0.7	-10.8	-7.5	-8.6	5.0	-2.4	-1.3
Oct	-10.3	-2.3	-4.2	5.8	-22.3	1.5	5.0	-2.8	-9.2	-	-3.0	2.6	-0.4	-2.0
Nov	-8.3	0.8	-1.3	14.6	-21.6	-2.1	3.5	-1.0	-7.4	0.1	-2.4	5.8	1.4	-0.1
Dec	-7.0	11.0	6.7	40.1	-11.3	-7.4	9.8	9.0	-6.1	-0.1	-2.0	10.8	3.9	7.1
2012 Jan	-6.4	5.3	2.5	3.4	-20.1	0.4	-0.9	-2.9	4.4	-3.2	-0.9	-0.2	-0.6	-2.1
Feb	-17.1	3.9	-1.0	-7.5	-24.8	10.2	-3.9	-7.3	-5.1	2.6	-	4.9	2.4	-3.8
Mar	-23.4	5.7	-1.2	-11.4	-23.3	15.9	-1.3	-6.6	-6.6	1.9	-0.9	2.4	0.7	-4.0
Apr	-16.0	-0.5	-4.2	-16.1	-20.5	10.6	-5.3	-9.3	-3.0	-4.4	-3.9	0.6	-1.7	-6.5
May	-23.5	-2.4	-7.3	-22.6	-19.7	6.8	-3.0	-10.7	4.5	2.5	3.2	3.1	3.1	-5.8
Jun	-26.1	-9.7	-13.3	-20.9	-26.7	-1.2	-10.9	-15.8	-2.3	-8.0	-6.1	2.1	-2.2	-11.0
Jul	-8.1	-10.7	-10.2	-20.7	-23.1	12.5	-15.6	-15.3	5.1	2.1	3.0	-1.8	0.7	-9.6
Aug	-14.9	-10.9	-11.8	-0.8	-18.1	5.6	-13.5	-10.4	5.3	-5.4	-2.0	-4.5	-3.2	-7.8
Sep	-20.9	-2.4	-6.6	-5.3	-17.9	5.7	-16.8	-10.9	9.0	-11.0	-4.8	-2.8	-3.8	-8.3
Oct	-14.4	-0.6	-3.6	1.2	-12.6	9.2	-14.7	-7.2	7.1	-13.4	-7.1	-1.8	-4.6	-6.2
Nov	-15.5	-0.7	-3.9	-3.8	-15.2	14.0	-15.5	-8.6	7.4	-11.5	-5.7	1.9	-2.0	-6.2
Dec	-7.2	-4.7	-5.2	-17.2	-27.3	27.0	-15.0	-13.2	2.0	-10.4	-6.5	-8.0	-7.3	-11.0
2013 Jan	-18.7	-8.7	-10.9	-9.6	-24.1	6.2	-6.7	-10.7	0.8	-4.6	-2.9	0.5	-1.3	-7.2
Feb	-6.3	-2.1	-2.9	3.0	-15.5	4.1	-3.0	-3.5	3.0	-6.6	-3.6	-0.1	-1.9	-2.9
Mar	-2.5	-8.3	-7.2	8.6	-13.2	-8.0	-7.9	-5.5	0.9	-6.8	-4.4	-2.3	-3.4	-4.7
Apr	-3.4	9.0	6.5	2.8	-14.5	-9.1	-6.8	-2.6	1.9	-3.0	-1.4	1.6	0.1	-1.6
May	7.2	6.7	6.8	7.6	-9.7	-8.4	-7.4	-1.1	-8.0	-2.9	-4.6	1.1	-1.8	-1.4
Jun	19.1	16.3	16.8	12.1	-2.9	-8.9	-3.3	5.0	-5.7	8.3	3.5	4.9	4.2	4.7
Jul	3.8	15.1	12.7	9.0	-5.2	-13.9	5.6	5.6	-11.8	-2.3	-5.4	3.2	-1.3	2.9
Aug	11.0	21.4	19.3	-3.3	-6.1	0.8	7.2	5.8	-4.0	7.6	3.6	11.7	7.5	6.5
Sep	11.1	12.9	12.5	-5.6	-1.0	-14.5	13.1	5.4	-7.7	12.8	5.4	7.0	6.2	5.7
Oct	24.5	17.3	18.6	3.9	-9.0	-20.1	7.2	5.9	-5.4	12.0	5.8	11.2	8.5	6.9
Nov	25.3	14.7	16.7	-1.0	-6.9	-18.1	3.6	3.7	-8.1	11.3	4.5	3.2	3.8	3.7
Dec	16.9	23.2	21.9	2.9	-2.0	-17.2	2.1	6.2	-4.1	6.3	2.7	9.1	5.9	6.1
2014 Jan	30.9	37.0	35.8	2.0	1.0	-8.9	4.0	11.5	5.3	11.7	9.6	8.9	9.2	10.6
Feb	33.4	19.3	22.0	-2.8	-6.7	-4.3	6.6	6.7	-4.9	13.8	7.4	4.7	6.1	6.5
Mar	38.8	26.8	29.1	-9.1	-4.6	8.5	11.4	9.7	-2.8	12.0	7.1	6.8	6.9	8.7
Apr	28.3	21.6	22.8	-5.3	2.7	13.2	10.4	10.1	-0.7	13.8	8.9	10.0	9.5	9.9
May	39.7	24.2	27.2	-2.4	-6.6	20.6	7.3	10.0	2.0	7.8	5.9	7.6	6.8	8.7
Jun	40.5	18.5	22.6	-12.3	-3.2	25.9	7.4	7.4	5.3	4.4	4.7	8.3	6.5	7.1
Jul	35.5	27.8	29.3	-4.3	-3.0	22.0	5.3	10.3	8.7	7.2	7.7	7.3	7.5	9.2
Aug	38.6	24.1	26.8	-7.3	0.9	13.0	1.4	7.9	1.6	10.6	7.8	5.3	6.5	7.4
Sep	35.2	25.7	27.6	2.7	-5.2	28.6	0.1	9.5	2.7	5.6	4.7	8.4	6.5	8.4
Oct	20.0	20.3	20.3	-7.3	5.0	24.5	0.9	6.8	-1.5	4.8	2.8	2.4	2.6	5.2
Nov	14.8	24.4	22.4	0.4	4.4	15.3	8.6	11.1	4.4	2.5	3.1	6.4	4.7	8.7
Dec	18.3	16.2	16.6	3.1	3.2	18.8	10.4	10.5	-0.2	5.2	3.5	3.1	3.3	7.7
2015 Jan	2.5	12.3	10.5	33.2	-2.3	28.4	4.7	12.2	-3.2	-1.3	-1.9	2.6	0.3	7.6
Feb	1.3	14.9	12.1	33.5	3.1	15.6	4.0	12.7	1.5	-5.6	-3.5	-	-1.8	7.1
Mar	-5.1	13.6	9.7	46.6	-1.6	4.3	-4.1	10.2	5.3	0.3	1.8	5.5	3.6	7.7
Apr	4.0	14.4	12.4	52.5	-6.2	7.2	-1.8	12.3	-3.3	0.8	-0.4	-5.6	-3.0	6.4
May	-17.2	14.4	7.7	43.8	-0.5	-0.5	1.6	10.8	3.0	3.3	3.2	-5.3	-1.1	6.3
Jun	-21.0	9.7	3.1	47.9	1.6	1.9	6.0	11.3	1.7	6.8	5.2	-8.7	-1.9	6.2
Jul	-25.2	3.0	-2.7	45.4	-1.0	19.3	1.1	8.1	0.5	3.8	2.7	-3.0	-0.2	5.0
Aug	-33.7	2.6	-4.9	43.5	-5.5	9.7	2.2	6.2	-0.7	-2.2	-1.7	-10.0	-5.8	1.6
Sep	-30.9	2.3	-4.5	33.5	-2.6	9.3	-3.7	3.4	2.7	4.3	3.8	-6.6	-1.5	1.5
Oct	-30.2	5.3	-1.9	32.9	-5.4	11.4	5.5	6.7	1.8	5.4	4.3	-4.2	-	4.2
Nov	-29.4	1.9	-4.1	18.7	-2.5	14.2	1.4	2.8	-4.3	5.6	2.5	-4.6	-1.1	1.3
Dec	-24.7	12.5	5.2	28.2	0.4	-1.1	-0.7	6.8	1.5	3.7	3.0	-1.4	0.8	4.6
2016 Jan	-16.7	7.0	2.8	0.4	8.0	-9.5	5.8	3.0	-2.8	7.4	4.2	-3.3	0.4	2.1
Feb	-23.3	17.3	9.6	-0.1	2.8	-18.1	6.4	4.4	0.3	7.0	4.9	0.9	2.9	3.9
Mar	-16.2	13.2	8.0	-8.4	-1.0	-3.3	4.9	1.8	-4.2	2.7	0.6	-10.2	-4.9	-0.6
Apr	-26.2	11.7	4.9	-12.9	8.6	-1.1	9.4	2.0	0.4	2.6	2.0	4.1	3.0	2.4
May	-13.0	7.7	4.3	-9.5	8.2	-1.3	7.7	2.2	-6.5	1.0	-1.3	2.3	0.4	1.6
Jun	-7.3	11.2	8.2	-12.8	0.8	-4.5	4.4	1.0	-7.9	-	-2.4	3.8	0.6	0.8
Jul	-2.5	13.7	11.2	-11.8	5.4	-17.1	6.7	2.4	-9.6	0.6	-2.5	-1.8	-2.2	0.7
Aug	5.8	14.1	12.9	-13.8	4.0	-14.5	8.3	3.0	-15.2	1.8	-3.4	2.9	-0.4	1.8
Sep	5.5	13.7	12.5	-7.7	2.2	-10.3	13.7	5.9	-13.2	-0.2	-4.1	-2.5	-3.3	2.5
Oct	5.5	11.6	10.7	-8.9	-0.6	-7.3	5.3	2.6	-11.8	-2.4	-5.2	-0.1	-2.7	0.7
Nov	13.7	12.5	12.6	-1.6	2.4	-11.6	2.9	4.4	-11.7	0.7	-2.9	-4.4	-3.6	1.5

Users of these data should note that there may be instances where the period on period growths for the same component differ between tables. This is due to the growth rates being calculated at a higher precision than 1 dp within the production system. This accuracy is truncated when transferred into the published tables.

4A.A CONSTRUCTION OUTPUT: VALUE SEASONALLY ADJUSTED CURRENT PRICES BY SECTOR

£ million

	New Housing			Other New Work				Repair and Maintenance						All Repair and Maintenance	All Work	
	Public housing	Private housing	Total new housing	Infra-structure	Excluding Infrastructure			All new work	Housing			Other Work				
					Public	Private industrial	Private commercial		Public housing	Private housing	Total housing	Infra-structure	Public			Private
	MVM9	MVN2	MVN3	MVN4	MVN5	MVN6	MVN7	MVN8	MVN9	MVNM	MVO2	N42T	N42U	N42V	MVO4	MVO5
1997	1 028	7 559	8 587	7 953	3 063	4 536	12 631	36 770	5 229	7 460	12 689	–	4 669	6 862	24 220	60 990
1998	881	8 146	9 027	7 703	3 343	4 893	14 747	39 713	5 110	7 890	13 000	–	4 778	7 334	25 112	64 825
1999	824	8 079	8 903	7 610	3 907	5 030	17 713	43 163	5 059	7 990	13 049	–	4 882	7 487	25 418	68 581
2000	1 075	9 475	10 550	7 941	3 863	4 717	18 608	45 679	5 104	8 358	13 462	–	5 158	8 412	27 032	72 711
2001	1 174	9 639	10 813	8 814	4 253	4 709	19 988	48 577	5 164	8 870	14 034	–	5 541	9 808	29 383	77 960
2002	1 411	11 453	12 864	10 033	5 517	4 323	22 220	54 957	4 974	10 255	15 229	–	6 065	10 969	32 263	87 220
2003	1 706	15 017	16 723	9 333	7 280	4 765	22 893	60 994	5 781	11 146	16 927	–	7 168	12 169	36 264	97 258
2004	2 210	18 977	21 187	8 243	8 638	5 210	25 509	68 787	6 414	11 951	18 365	–	7 215	12 291	37 871	106 658
2005	2 251	20 715	22 966	8 241	8 362	5 610	26 325	71 504	6 642	12 276	18 918	–	8 044	13 027	39 989	111 493
2006	2 853	21 765	24 618	8 178	8 047	6 308	30 121	77 272	6 819	12 568	19 387	–	7 868	13 794	41 049	118 321
2007	3 480	22 146	25 626	8 642	8 347	6 438	34 404	83 457	6 885	13 476	20 361	–	7 439	15 807	43 607	127 064
2008	3 299	18 138	21 437	9 715	9 988	5 339	35 190	81 669	7 467	14 708	22 175	–	8 635	16 165	46 975	128 644
2009	3 327	12 592	15 919	10 738	11 857	3 515	25 558	67 587	7 417	13 283	20 700	–	8 631	14 165	43 496	111 083
2010	4 891	14 839	19 730	13 538	14 372	3 550	23 712	74 902	7 873	14 406	22 279	6 841	5 072	8 290	42 482	117 384
2011	4 919	16 398	21 317	15 321	13 306	3 364	24 275	77 584	7 224	15 159	22 383	8 030	5 044	8 963	44 420	122 005
2012	4 027	16 235	20 262	14 103	10 795	3 718	22 485	71 363	7 613	15 070	22 683	8 084	4 962	9 191	44 921	116 284
2013	4 334	18 119	22 453	15 112	10 227	3 538	23 587	74 917	7 518	16 132	23 650	8 375	5 341	9 703	47 069	121 986
2014	5 850	23 807	29 657	14 747	10 295	4 142	26 124	84 965	7 751	18 012	25 763	9 154	5 834	10 352	51 103	136 068
2015	4 882	26 283	31 165	20 882	10 475	4 690	27 157	94 369	7 882	18 476	26 358	8 460	4 819	11 035	50 672	145 040

Users of these data should note that there may be instances where the period on period growths for the same component differ between tables. This is due to the growth rates being calculated at a higher precision than 1 dp within the production system. This accuracy is truncated when transferred into the published tables.

4A.Q CONSTRUCTION OUTPUT: VALUE SEASONALLY ADJUSTED CURRENT PRICES BY SECTOR

£ million

	New Housing				Other New Work			Repair and Maintenance								All Repair and Maintenance	All Work
	Public housing	Private housing	Total new housing	Infra- structure	Excluding Infrastructure			Housing				Other Work					
					Public	Private industrial	Private commercial	All new work	Public housing	Private housing	Total housing	Infra- structure	Public	Private			
MVM9	MVN2	MVN3	MVN4	MVN5	MVN6	MVN7	MVN8	MVN9	MVNM	MVO2	N42T	N42U	N42V	MVO4	MVO5		
2001 Q4	325	2 547	2 873	2 247	1 181	1 143	5 281	12 725	1 334	2 171	3 505	-	1 561	2 477	7 543	20 268	
2002 Q1	345	2 600	2 945	2 507	1 240	1 083	5 336	13 111	1 225	2 300	3 525	-	1 560	2 597	7 682	20 792	
Q2	345	2 726	3 071	2 571	1 330	1 061	5 488	13 520	1 211	2 505	3 716	-	1 502	2 696	7 914	21 434	
Q3	360	2 952	3 312	2 557	1 433	1 090	5 639	14 031	1 238	2 601	3 839	-	1 423	2 835	8 097	22 128	
Q4	361	3 175	3 536	2 399	1 514	1 089	5 757	14 295	1 300	2 849	4 149	-	1 580	2 841	8 570	22 865	
2003 Q1	384	3 365	3 749	2 405	1 601	1 118	5 554	14 428	1 298	2 512	3 810	-	1 789	2 881	8 480	22 908	
Q2	406	3 507	3 913	2 374	1 735	1 142	5 567	14 732	1 425	2 828	4 253	-	1 832	3 007	9 092	23 824	
Q3	438	3 867	4 305	2 299	1 886	1 211	5 719	15 421	1 550	2 851	4 401	-	1 729	3 233	9 363	24 784	
Q4	478	4 277	4 755	2 254	2 057	1 293	6 053	16 413	1 507	2 955	4 463	-	1 818	3 049	9 329	25 742	
2004 Q1	533	4 572	5 105	2 134	2 160	1 309	6 299	17 007	1 626	3 029	4 656	-	1 854	3 218	9 728	26 735	
Q2	557	4 684	5 241	2 109	2 179	1 285	6 429	17 242	1 571	2 868	4 439	-	1 806	3 011	9 256	26 498	
Q3	562	4 813	5 376	2 049	2 161	1 304	6 420	17 309	1 566	3 035	4 601	-	1 714	3 004	9 319	26 628	
Q4	558	4 907	5 465	1 952	2 138	1 313	6 361	17 228	1 650	3 019	4 669	-	1 842	3 058	9 569	26 797	
2005 Q1	546	4 999	5 545	2 009	2 144	1 316	6 416	17 429	1 747	3 040	4 787	-	2 029	3 282	10 098	27 527	
Q2	545	5 224	5 769	1 989	2 119	1 391	6 582	17 849	1 741	3 055	4 796	-	2 112	3 275	10 182	28 032	
Q3	546	5 248	5 794	2 074	2 056	1 432	6 563	17 920	1 578	3 096	4 674	-	1 921	3 277	9 873	27 792	
Q4	614	5 244	5 858	2 170	2 044	1 470	6 764	18 306	1 576	3 085	4 661	-	1 982	3 193	9 836	28 141	
2006 Q1	657	5 306	5 963	2 131	2 049	1 550	7 131	18 824	1 637	3 161	4 798	-	1 960	3 318	10 075	28 900	
Q2	700	5 386	6 086	2 018	2 011	1 548	7 349	19 013	1 652	3 178	4 830	-	2 115	3 431	10 376	29 389	
Q3	738	5 486	6 224	2 003	1 995	1 575	7 652	19 449	1 780	3 110	4 889	-	1 921	3 356	10 166	29 615	
Q4	758	5 587	6 345	2 026	1 991	1 635	7 988	19 985	1 751	3 119	4 870	-	1 872	3 690	10 432	30 418	
2007 Q1	849	5 642	6 491	2 037	2 007	1 666	8 218	20 419	1 764	3 284	5 049	-	1 803	3 928	10 779	31 199	
Q2	881	5 589	6 469	2 112	2 051	1 674	8 495	20 802	1 692	3 367	5 059	-	1 939	3 897	10 895	31 696	
Q3	876	5 516	6 392	2 202	2 116	1 590	8 665	20 965	1 667	3 299	4 966	-	1 792	3 955	10 713	31 678	
Q4	874	5 399	6 273	2 291	2 173	1 508	9 025	21 271	1 762	3 526	5 288	-	1 905	4 027	11 220	32 490	
2008 Q1	849	5 213	6 062	2 388	2 341	1 514	9 263	21 569	1 760	3 522	5 281	-	2 051	4 179	11 511	33 080	
Q2	848	4 809	5 657	2 474	2 451	1 376	8 932	20 890	1 914	3 706	5 620	-	2 266	4 285	12 171	33 061	
Q3	832	4 338	5 169	2 523	2 585	1 294	8 845	20 417	1 904	3 616	5 519	-	2 217	3 974	11 711	32 128	
Q4	770	3 778	4 548	2 330	2 610	1 154	8 151	18 793	1 890	3 865	5 755	-	2 101	3 726	11 582	30 375	
2009 Q1	720	3 315	4 035	2 350	2 626	969	7 303	17 283	1 799	3 400	5 199	-	2 048	3 636	10 882	28 165	
Q2	749	3 151	3 900	2 534	2 837	872	6 794	16 938	1 800	3 276	5 076	-	2 070	3 519	10 665	27 603	
Q3	866	2 986	3 852	2 697	3 094	826	6 013	16 482	1 928	3 509	5 437	-	2 378	3 611	11 425	27 907	
Q4	992	3 140	4 132	3 158	3 300	847	5 448	16 884	1 890	3 098	4 988	-	2 136	3 400	10 524	27 408	
2010 Q1	1 142	3 308	4 452	3 416	3 542	847	5 811	18 069	1 946	3 285	5 230	1 602	1 284	1 980	10 097	28 166	
Q2	1 177	3 672	4 849	3 596	3 666	862	5 878	18 850	2 026	3 572	5 598	1 802	1 309	2 029	10 738	29 588	
Q3	1 303	3 941	5 244	3 418	3 524	1 010	6 178	19 374	1 970	3 794	5 764	1 713	1 234	2 097	10 809	30 183	
Q4	1 269	3 918	5 186	3 110	3 640	832	5 844	18 612	1 931	3 753	5 683	1 723	1 245	2 184	10 834	29 446	
2011 Q1	1 313	3 995	5 308	3 572	3 652	805	5 770	19 108	1 817	3 707	5 525	1 876	1 251	2 230	10 881	29 989	
Q2	1 254	4 071	5 324	3 987	3 393	849	6 050	19 602	1 831	3 730	5 560	1 878	1 253	2 207	10 899	30 502	
Q3	1 207	4 194	5 402	3 842	3 205	844	6 166	19 458	1 768	3 749	5 518	2 007	1 283	2 239	11 047	30 506	
Q4	1 151	4 137	5 289	3 918	3 061	868	6 285	19 421	1 807	3 972	5 781	1 993	1 264	2 283	11 320	30 740	
2012 Q1	1 093	4 321	5 414	3 575	2 923	936	5 803	18 649	1 832	3 920	5 752	1 911	1 291	2 391	11 343	29 993	
Q2	963	3 999	4 961	3 376	2 733	936	5 843	17 850	1 901	3 769	5 670	2 012	1 213	2 299	11 195	29 045	
Q3	1 006	3 945	4 951	3 671	2 652	927	5 444	17 646	1 953	3 754	5 706	1 837	1 230	2 293	11 067	28 713	
Q4	987	4 120	5 108	3 803	2 569	1 011	5 538	18 026	1 960	3 679	5 640	1 913	1 227	2 279	11 059	29 085	
2013 Q1	973	4 095	5 068	3 726	2 496	947	5 659	17 896	1 906	3 839	5 744	1 942	1 297	2 327	11 310	29 205	
Q2	1 035	4 506	5 538	3 761	2 587	875	5 720	18 482	1 893	3 978	5 870	1 916	1 367	2 442	11 593	30 076	
Q3	1 104	4 706	5 809	3 806	2 645	874	6 137	19 269	1 853	4 132	5 985	2 077	1 348	2 495	11 905	31 175	
Q4	1 233	5 073	6 306	4 041	2 522	863	6 114	19 846	1 894	4 221	6 115	2 151	1 339	2 498	12 102	31 948	
2014 Q1	1 345	5 530	6 874	3 795	2 517	969	6 384	20 541	1 935	4 469	6 405	2 173	1 335	2 529	12 443	32 984	
Q2	1 441	5 687	7 128	3 667	2 568	1 061	6 409	20 831	1 952	4 445	6 397	2 151	1 434	2 680	12 661	33 493	
Q3	1 531	6 141	7 672	3 848	2 614	1 074	6 473	21 679	1 962	4 557	6 520	2 224	1 420	2 688	12 852	34 532	
Q4	1 469	6 233	7 702	4 117	2 665	1 053	6 632	22 170	1 934	4 446	6 379	2 265	1 292	2 685	12 620	34 791	
2015 Q1	1 373	6 336	7 709	5 089	2 559	1 151	6 632	23 140	1 973	4 415	6 387	2 368	1 220	2 679	12 655	35 795	
Q2	1 302	6 616	7 918	5 277	2 599	1 123	6 751	23 669	1 974	4 651	6 625	2 080	1 149	2 697	12 551	36 220	
Q3	1 112	6 496	7 609	5 331	2 636	1 257	6 750	23 582	1 991	4 693	6 684	2 044	1 194	2 757	12 680	36 262	
Q4	1 095	6 835	7 930	5 184	2 680	1 159	7 024	23 977	1 945	4 716	6 661	1 967	1 256	2 901	12 786	36 763	
2016 Q1	1 145	7 394	8 539	5 063	2 732	1 043	7 247	24 624	1 941	4 699	6 641	1 919	1 215	2 876	12 651	37 275	
Q2	1 132	7 472	8 604	4 793	2 844	1 160	7 482	24 883	1 893	4 742	6 634	2 064	1 201	2 871	12 771	37 654	
Q3	1 173	7 588	8 761	4 699	2 795	1 116	7 550	24 922	1 753	4 769	6 523	1 932	1 176	2 904	12 535	37 457	

Users of these data should note that there may be instances where the period on period growths for the same component differ between tables. This is due to the growth rates being calculated at a higher precision than 1 dp within the production system. This accuracy is truncated when transferred into the published tables.

4A.M CONSTRUCTION OUTPUT: VALUE SEASONALLY ADJUSTED CURRENT PRICES BY SECTOR

£ million

	New Housing			Other New Work				Repair and Maintenance								All Repair and Maintenance	
	Public housing	Private housing	Total new housing	Excluding Infrastructure				Housing				Other Work					
				Infra-structure	Public	Private industrial	Private commercial	All new work	Public housing	Private housing	Total housing	Infra-structure	Public	Private			
	MVM9	MVN2	MVN3	MVN4	MVN5	MVN6	MVN7	MVN8	MVN9	MVNM	MVO2	N42T	N42U	N42V	MVO4	MVO5	
2011 Feb	432	1 325	1 757	1 197	1 245	263	1 893	6 355	625	1 221	1 846	603	414	739	3 602	9 957	
Mar	446	1 359	1 805	1 219	1 184	265	1 948	6 421	633	1 228	1 861	664	427	742	3 694	10 115	
Apr	420	1 304	1 723	1 302	1 148	276	2 002	6 451	616	1 266	1 883	625	425	737	3 671	10 121	
May	430	1 347	1 777	1 348	1 119	279	1 989	6 512	600	1 219	1 818	613	417	744	3 592	10 105	
Jun	404	1 420	1 824	1 337	1 126	294	2 059	6 639	615	1 245	1 859	640	411	726	3 636	10 276	
Jul	387	1 424	1 812	1 341	1 110	272	2 061	6 595	595	1 243	1 839	654	456	733	3 682	10 278	
Aug	393	1 399	1 792	1 243	1 052	280	2 030	6 397	590	1 243	1 833	675	408	760	3 676	10 073	
Sep	427	1 371	1 798	1 258	1 043	292	2 075	6 466	583	1 263	1 846	678	419	746	3 689	10 155	
Oct	387	1 351	1 738	1 196	969	303	2 066	6 272	593	1 317	1 911	641	412	736	3 699	9 971	
Nov	395	1 380	1 776	1 286	987	294	2 080	6 424	599	1 322	1 921	653	423	760	3 757	10 180	
Dec	369	1 406	1 775	1 436	1 105	271	2 139	6 725	615	1 333	1 949	699	429	787	3 864	10 589	
2012 Jan	402	1 422	1 824	1 262	1 010	298	1 957	6 351	602	1 280	1 882	615	410	781	3 687	10 038	
Feb	354	1 419	1 773	1 170	970	311	1 867	6 090	615	1 316	1 931	634	433	816	3 814	9 905	
Mar	337	1 480	1 817	1 143	943	327	1 979	6 208	615	1 324	1 939	662	448	794	3 842	10 050	
Apr	347	1 334	1 681	1 156	948	322	1 953	6 060	623	1 265	1 888	664	402	769	3 724	9 784	
May	324	1 350	1 673	1 104	931	313	1 991	6 013	652	1 305	1 957	682	411	778	3 828	9 841	
Jun	292	1 315	1 607	1 116	854	301	1 899	5 777	626	1 199	1 825	666	400	752	3 643	9 420	
Jul	348	1 301	1 649	1 120	881	315	1 809	5 774	651	1 332	1 982	631	410	789	3 813	9 587	
Aug	328	1 275	1 603	1 298	888	300	1 835	5 924	645	1 238	1 883	605	413	742	3 643	9 567	
Sep	330	1 369	1 699	1 253	883	312	1 800	5 948	657	1 184	1 841	601	407	762	3 611	9 559	
Oct	324	1 367	1 691	1 268	875	332	1 832	5 997	656	1 203	1 859	622	396	765	3 642	9 639	
Nov	327	1 392	1 719	1 294	864	335	1 822	6 033	662	1 229	1 891	671	421	792	3 775	9 808	
Dec	336	1 361	1 698	1 241	830	344	1 884	5 996	642	1 247	1 890	620	410	722	3 642	9 638	
2013 Jan	321	1 314	1 635	1 187	791	317	1 890	5 821	620	1 269	1 889	639	424	753	3 706	9 526	
Feb	327	1 406	1 733	1 252	851	326	1 875	6 036	648	1 281	1 928	664	432	769	3 793	9 829	
Mar	325	1 375	1 700	1 287	854	304	1 894	6 039	638	1 289	1 927	639	441	805	3 811	9 850	
Apr	335	1 477	1 811	1 231	845	299	1 895	6 081	657	1 288	1 944	621	446	787	3 798	9 880	
May	347	1 467	1 813	1 232	877	294	1 921	6 137	623	1 332	1 955	658	453	817	3 882	10 019	
Jun	353	1 562	1 914	1 298	865	282	1 904	6 264	613	1 358	1 971	637	468	838	3 913	10 177	
Jul	364	1 530	1 893	1 268	869	282	1 976	6 288	593	1 358	1 951	676	457	812	3 896	10 184	
Aug	367	1 587	1 954	1 307	867	315	2 039	6 480	637	1 383	2 020	703	453	860	4 036	10 517	
Sep	373	1 589	1 962	1 231	909	277	2 122	6 501	623	1 391	2 014	698	438	823	3 973	10 474	
Oct	410	1 657	2 067	1 373	836	277	2 064	6 617	637	1 409	2 046	717	461	847	4 071	10 688	
Nov	415	1 661	2 076	1 336	839	288	2 000	6 539	624	1 431	2 055	697	452	834	4 037	10 576	
Dec	408	1 755	2 163	1 332	847	298	2 050	6 690	633	1 381	2 014	737	426	817	3 994	10 684	
2014 Jan	432	1 918	2 349	1 288	843	305	2 106	6 892	671	1 469	2 141	748	457	836	4 182	11 074	
Feb	451	1 776	2 227	1 282	829	325	2 100	6 763	633	1 505	2 138	711	436	846	4 132	10 895	
Mar	462	1 836	2 298	1 225	845	339	2 178	6 886	631	1 495	2 126	714	442	847	4 129	11 015	
Apr	441	1 864	2 305	1 220	879	345	2 159	6 907	662	1 505	2 168	707	498	887	4 259	11 167	
May	492	1 893	2 385	1 252	836	355	2 130	6 957	639	1 476	2 115	717	465	876	4 173	11 130	
Jun	508	1 930	2 438	1 195	853	361	2 120	6 967	651	1 464	2 114	727	471	917	4 229	11 196	
Jul	503	2 041	2 543	1 272	858	353	2 159	7 184	652	1 495	2 147	726	460	895	4 228	11 413	
Aug	515	2 037	2 552	1 259	883	360	2 129	7 182	659	1 563	2 222	744	472	894	4 332	11 514	
Sep	513	2 063	2 577	1 317	873	361	2 185	7 313	651	1 499	2 151	754	488	899	4 292	11 605	
Oct	498	2 049	2 547	1 321	896	349	2 134	7 248	636	1 497	2 133	783	439	852	4 206	11 454	
Nov	480	2 115	2 595	1 388	888	342	2 205	7 418	660	1 479	2 138	749	418	935	4 240	11 658	
Dec	491	2 069	2 560	1 408	881	362	2 293	7 504	638	1 470	2 108	733	435	898	4 174	11 679	
2015 Jan	450	2 150	2 601	1 661	829	393	2 217	7 701	656	1 466	2 122	786	414	888	4 211	11 912	
Feb	467	2 062	2 529	1 661	870	384	2 239	7 682	646	1 432	2 079	723	406	893	4 100	11 783	
Mar	456	2 123	2 579	1 767	859	374	2 177	7 757	670	1 517	2 187	859	400	898	4 344	12 101	
Apr	469	2 215	2 684	1 810	853	378	2 199	7 923	642	1 536	2 177	720	396	889	4 182	12 106	
May	421	2 229	2 650	1 751	858	369	2 242	7 869	665	1 542	2 206	667	371	911	4 156	12 025	
Jun	412	2 172	2 585	1 717	888	376	2 311	7 877	668	1 574	2 241	693	381	898	4 213	12 090	
Jul	390	2 175	2 565	1 831	883	436	2 283	7 999	660	1 572	2 232	733	385	920	4 270	12 269	
Aug	355	2 154	2 509	1 780	870	409	2 274	7 843	658	1 540	2 198	658	396	882	4 134	11 976	
Sep	367	2 167	2 534	1 720	882	412	2 192	7 741	673	1 581	2 254	654	413	955	4 276	12 017	
Oct	361	2 224	2 586	1 714	871	399	2 342	7 911	653	1 595	2 249	639	416	956	4 260	12 172	
Nov	355	2 221	2 577	1 632	897	395	2 335	7 836	638	1 584	2 222	663	427	970	4 283	12 119	
Dec	379	2 389	2 768	1 838	912	366	2 347	8 230	654	1 537	2 191	665	413	974	4 243	12 473	
2016 Jan	386	2 385	2 770	1 701	933	367	2 443	8 214	642	1 583	2 225	624	417	965	4 230	12 444	
Feb	368	2 495	2 864	1 706	926	321	2 465	8 282	652	1 548	2 201	651	416	956	4 224	12 506	
Mar	391	2 514	2 905	1 656	873	355	2 340	8 128	647	1 568	2 215	645	382	956	4 197	12 325	
Apr	358	2 502	2 860	1 621	960	403	2 493	8 337	648	1 590	2 238	693	398	960	4 289	12 626	
May	379	2 481	2 860	1 632	961	378	2 496	8 326	626	1 567	2 193	691	401	943	4 228	12 554	
Jun	395	2 489	2 884	1 540	923	379	2 494	8 220	619	1 584	2 203	681	402	968	4 254	12 474	
Jul	388	2 524	2 912	1 589	944	373	2 479	8 298	601	1 586	2 186	636	387	963	4 172	12 470	
Aug	386	2 528	2 914	1 532	927	364	2 518	8 254	563	1 588	2 151	647	400	980	4 178	12 432	
Sep	399	2 536	2 935	1 578	924	379	2 553	8 370	590	1 596	2 186	649	389	961	4 185	12 555	
Oct	393	2 557	2 949	1 546	896	385	2 522	8 298	583	1 577	2 160	640	393	991	4 184	12 482	
Nov	416	2 576	2 992	1 594	937	368	2 459	8 350	570	1 616	2 186	644	368	968	4 166	12 516	

Users of these data should note that there may be instances where the period on period growths for the same component differ between tables. This is due to the growth rates being calculated at a higher precision than 1 dp within the production system. This accuracy is truncated when transferred into the published tables.

4A CONSTRUCTION OUTPUT: VALUE NON-SEASONALLY ADJUSTED CURRENT PRICES BY SECTOR

£ million

	New Housing			Other New Work				Repair and Maintenance				Other Work		All Repair and Mainten- ance	All Work	
	Public housing	Private housing	Total new housing	Infrast- ructure	Excluding Infrastructure			Housing				Public	Private			
					Public	Private industr- ial	Private commerc- ial	All new work	Public housing	Private housing	Total housing					Infrast- ructure
	MV6L	MV6M	MVM5	MV6N	MV6O	MV6P	MV6Q	MV6R	MV6S	MV6T	MV6V	MV6W	MV6X	MV6Y	MV6Z	MV72
1997	1 028	7 559	8 587	7 953	3 063	4 536	12 631	36 770	5 229	7 460	12 689	-	4 669	6 862	24 220	60 990
1998	881	8 146	9 027	7 703	3 343	4 893	14 747	39 713	5 110	7 890	13 000	-	4 778	7 334	25 112	64 825
1999	824	8 079	8 903	7 610	3 907	5 030	17 713	43 163	5 059	7 990	13 049	-	4 882	7 487	25 418	68 581
2000	1 075	9 475	10 550	7 941	3 863	4 717	18 608	45 679	5 104	8 358	13 462	-	5 158	8 412	27 032	72 711
2001	1 174	9 639	10 813	8 814	4 253	4 709	19 988	48 577	5 164	8 870	14 034	-	5 541	9 808	29 383	77 960
2002	1 411	11 453	12 864	10 033	5 517	4 323	22 220	54 957	4 974	10 255	15 229	-	6 065	10 969	32 263	87 220
2003	1 706	15 017	16 723	9 333	7 280	4 765	22 893	60 994	5 781	11 146	16 927	-	7 168	12 169	36 264	97 258
2004	2 210	18 977	21 187	8 243	8 638	5 210	25 509	68 787	6 414	11 951	18 365	-	7 215	12 291	37 871	106 658
2005	2 251	20 715	22 966	8 241	8 362	5 610	26 325	71 504	6 642	12 276	18 918	-	8 044	13 027	39 989	111 493
2006	2 853	21 765	24 618	8 178	8 047	6 308	30 121	77 272	6 819	12 568	19 387	-	7 868	13 794	41 049	118 321
2007	3 480	22 146	25 626	8 642	8 347	6 438	34 404	83 457	6 885	13 476	20 361	-	7 439	15 807	43 607	127 064
2008	3 299	18 138	21 437	9 715	9 988	5 339	35 190	81 669	7 467	14 708	22 175	-	8 635	16 165	46 975	128 644
2009	3 327	12 592	15 919	10 738	11 857	3 515	25 558	67 587	7 417	13 283	20 700	-	8 631	14 165	43 496	111 083
2010	4 893	14 839	19 732	13 540	14 372	3 551	23 710	74 905	7 871	14 405	22 276	6 841	5 074	8 290	42 480	117 385
2011	4 919	16 398	21 317	15 321	13 306	3 364	24 275	77 584	7 224	15 159	22 383	7 762	5 044	8 963	44 152	121 737
2012	4 027	16 235	20 262	14 103	10 795	3 718	22 485	71 363	7 613	15 070	22 683	7 815	4 962	9 191	44 651	116 014
2013	4 334	18 119	22 453	15 112	10 227	3 538	23 587	74 917	7 518	16 132	23 650	8 096	5 341	9 703	46 789	121 706
2014	5 782	23 622	29 405	15 384	10 360	4 201	25 944	85 294	7 784	17 969	25 753	8 809	5 513	10 642	50 717	136 011
2015	4 891	26 299	31 191	20 489	10 530	4 734	26 990	93 933	7 910	18 510	26 420	8 496	4 867	11 077	50 861	144 794

Users of these data should note that there may be instances where the period on period growths for the same component differ between tables. This is due to the growth rates being calculated at a higher precision than 1 dp within the production system. This accuracy is truncated when transferred into the published tables.

4Q CONSTRUCTION OUTPUT: VALUE NON-SEASONALLY ADJUSTED CURRENT PRICES BY SECTOR

£ million

	New Housing				Other New Work			Repair and Maintenance				Other Work		All Repair and Maintenance	All Work	
	Public housing	Private housing	Total new housing	Infra- structure	Excluding Infrastructure			All new work	Housing			Public	Private			
					Public	Private industrial	Private commercial		Public housing	Private housing	Total housing					Infra- structure
	MV6L	MV6M	MVM5	MV6N	MV6O	MV6P	MV6Q	MV6R	MV6S	MV6T	MV6V	MV6W	MV6X	MV6Y	MV6Z	MV72
2001 Q4	310	2 555	2 865	2 252	1 202	1 180	5 411	12 910	1 328	2 184	3 512	-	1 567	2 526	7 605	20 515
2002 Q1	347	2 556	2 903	2 479	1 209	1 053	5 217	12 861	1 256	2 266	3 522	-	1 567	2 536	7 625	20 486
Q2	362	2 719	3 081	2 586	1 321	1 050	5 439	13 477	1 197	2 474	3 671	-	1 410	2 641	7 722	21 199
Q3	361	2 984	3 345	2 583	1 442	1 093	5 677	14 140	1 241	2 644	3 885	-	1 499	2 898	8 282	22 422
Q4	341	3 194	3 535	2 385	1 545	1 127	5 887	14 479	1 280	2 871	4 151	-	1 589	2 894	8 634	23 113
2003 Q1	393	3 324	3 717	2 378	1 567	1 097	5 451	14 210	1 340	2 476	3 816	-	1 799	2 811	8 426	22 636
Q2	428	3 492	3 920	2 392	1 726	1 127	5 526	14 691	1 422	2 798	4 220	-	1 720	2 945	8 885	23 576
Q3	437	3 909	4 346	2 335	1 896	1 212	5 754	15 543	1 553	2 880	4 433	-	1 821	3 305	9 559	25 102
Q4	448	4 292	4 740	2 228	2 091	1 329	6 162	16 550	1 466	2 992	4 458	-	1 828	3 108	9 394	25 944
2004 Q1	551	4 534	5 085	2 109	2 133	1 298	6 220	16 845	1 696	2 985	4 681	-	1 863	3 144	9 688	26 533
Q2	582	4 675	5 257	2 125	2 169	1 269	6 390	17 210	1 568	2 845	4 413	-	1 695	2 952	9 060	26 270
Q3	556	4 862	5 418	2 087	2 171	1 299	6 462	17 437	1 562	3 046	4 608	-	1 805	3 075	9 488	26 925
Q4	521	4 906	5 427	1 922	2 165	1 344	6 437	17 295	1 588	3 075	4 663	-	1 852	3 120	9 635	26 930
2005 Q1	567	4 962	5 529	1 984	2 132	1 316	6 360	17 321	1 828	2 983	4 811	-	2 041	3 208	10 060	27 381
Q2	568	5 231	5 799	2 008	2 107	1 378	6 537	17 829	1 730	3 041	4 771	-	1 984	3 210	9 965	27 794
Q3	539	5 301	5 840	2 118	2 064	1 421	6 619	18 062	1 568	3 087	4 655	-	2 024	3 353	10 032	28 094
Q4	577	5 221	5 798	2 131	2 059	1 495	6 809	18 292	1 516	3 165	4 681	-	1 995	3 256	9 932	28 224
2006 Q1	683	5 274	5 957	2 103	2 045	1 560	7 093	18 758	1 708	3 087	4 795	-	1 972	3 241	10 008	28 766
Q2	723	5 404	6 127	2 043	1 994	1 533	7 279	18 976	1 637	3 174	4 811	-	1 987	3 361	10 159	29 135
Q3	731	5 540	6 271	2 047	2 005	1 559	7 743	19 625	1 778	3 090	4 868	-	2 024	3 432	10 324	29 949
Q4	716	5 547	6 263	1 985	2 003	1 656	8 006	19 913	1 696	3 217	4 913	-	1 885	3 760	10 558	30 471
2007 Q1	876	5 613	6 489	2 010	2 003	1 679	8 172	20 353	1 817	3 195	5 012	-	1 814	3 835	10 661	31 014
Q2	901	5 615	6 516	2 146	2 028	1 655	8 414	20 759	1 675	3 369	5 044	-	1 821	3 818	10 683	31 442
Q3	872	5 567	6 439	2 248	2 128	1 574	8 806	21 195	1 680	3 278	4 958	-	1 888	4 046	10 892	32 087
Q4	831	5 351	6 182	2 238	2 188	1 530	9 012	21 150	1 713	3 634	5 347	-	1 916	4 108	11 371	32 521
2008 Q1	866	5 186	6 052	2 353	2 333	1 525	9 195	21 458	1 787	3 420	5 207	-	2 063	4 086	11 356	32 814
Q2	860	4 835	5 695	2 517	2 420	1 351	8 848	20 831	1 903	3 712	5 615	-	2 128	4 204	11 947	32 778
Q3	834	4 386	5 220	2 568	2 594	1 283	9 039	20 704	1 943	3 600	5 543	-	2 333	4 070	11 946	32 650
Q4	739	3 731	4 470	2 277	2 641	1 180	8 108	18 676	1 834	3 976	5 810	-	2 111	3 805	11 726	30 402
2009 Q1	734	3 288	4 022	2 323	2 621	971	7 195	17 132	1 813	3 295	5 108	-	2 053	3 554	10 715	27 847
Q2	763	3 175	3 938	2 590	2 802	848	6 742	16 920	1 802	3 282	5 084	-	1 938	3 450	10 472	27 392
Q3	874	3 031	3 905	2 741	3 087	818	6 229	16 780	1 983	3 501	5 484	-	2 497	3 694	11 675	28 455
Q4	956	3 098	4 054	3 084	3 347	878	5 392	16 755	1 819	3 205	5 024	-	2 143	3 467	10 634	27 389
2010 Q1	1 072	3 029	4 101	3 315	3 303	823	5 443	16 985	2 038	3 011	5 049	1 607	1 238	1 943	9 837	26 822
Q2	1 230	3 815	5 045	3 647	3 600	882	5 817	18 991	1 941	3 524	5 464	1 791	1 200	1 992	10 448	29 439
Q3	1 311	3 996	5 307	3 448	3 786	1 025	6 453	20 019	1 963	3 887	5 850	1 764	1 409	2 174	11 197	31 216
Q4	1 279	3 999	5 279	3 130	3 683	821	5 997	18 910	1 930	3 983	5 912	1 679	1 227	2 180	10 999	29 908
2011 Q1	1 241	3 658	4 899	3 473	3 397	795	5 422	17 987	1 920	3 447	5 367	1 882	1 210	2 189	10 649	28 636
Q2	1 305	4 260	5 566	4 048	3 353	865	5 992	19 824	1 751	3 692	5 443	1 869	1 144	2 175	10 631	30 455
Q3	1 212	4 273	5 485	3 890	3 471	839	6 454	20 138	1 762	3 852	5 614	2 068	1 457	2 326	11 465	31 603
Q4	1 160	4 207	5 368	3 909	3 085	865	6 408	19 635	1 792	4 168	5 959	1 943	1 233	2 273	11 408	31 042
2012 Q1	1 022	3 978	5 001	3 467	2 716	923	5 482	17 589	1 943	3 740	5 681	1 916	1 249	2 342	11 189	28 779
Q2	1 018	4 191	5 210	3 421	2 692	950	5 792	18 065	1 814	3 696	5 511	1 993	1 108	2 268	10 879	28 943
Q3	1 010	3 996	5 008	3 706	2 861	936	5 663	18 175	1 938	3 808	5 745	1 885	1 396	2 363	11 389	29 563
Q4	997	4 217	5 214	3 831	2 608	1 000	5 689	18 344	1 953	3 879	5 830	1 878	1 208	2 290	11 208	29 552
2013 Q1	904	3 751	4 655	3 619	2 305	924	5 334	16 835	1 993	3 493	5 486	1 943	1 245	2 220	10 894	27 730
Q2	1 089	4 697	5 786	3 797	2 532	883	5 645	18 645	1 812	3 988	5 801	1 898	1 240	2 449	11 388	30 033
Q3	1 109	4 769	5 878	3 853	2 865	882	6 383	19 861	1 859	4 250	6 110	2 122	1 543	2 580	12 352	32 213
Q4	1 242	5 161	6 404	4 065	2 547	870	6 266	20 151	1 882	4 439	6 320	2 123	1 322	2 512	12 277	32 429
2014 Q1	1 280	5 049	6 329	3 673	2 301	946	6 059	19 307	2 027	4 202	6 230	2 152	1 284	2 456	12 122	31 429
Q2	1 487	5 963	7 450	3 700	2 522	1 091	6 351	21 113	1 871	4 423	6 293	2 129	1 309	2 670	12 402	33 515
Q3	1 535	6 249	7 784	3 887	2 848	1 123	6 758	22 399	1 971	4 691	6 662	2 265	1 641	2 807	13 375	35 774
Q4	1 480	6 362	7 842	4 124	2 690	1 042	6 777	22 474	1 915	4 653	6 568	2 263	1 278	2 709	12 818	35 292
2015 Q1	1 313	5 850	7 163	4 838	2 342	1 127	6 262	21 732	2 082	4 128	6 210	2 355	1 177	2 579	12 321	34 053
Q2	1 359	6 925	8 284	5 162	2 575	1 151	6 625	23 799	1 915	4 631	6 545	2 101	1 060	2 683	12 390	36 189
Q3	1 117	6 571	7 688	5 312	2 909	1 293	6 984	24 186	1 999	4 838	6 837	2 075	1 386	2 878	13 176	37 362
Q4	1 102	6 954	8 056	5 176	2 703	1 163	7 120	24 217	1 914	4 914	6 828	1 965	1 244	2 937	12 974	37 191
2016 Q1	1 085	6 807	7 892	4 799	2 486	1 025	6 860	23 063	2 077	4 457	6 534	1 896	1 169	2 804	12 403	35 466
Q2	1 189	7 888	9 078	4 670	2 818	1 189	7 340	25 094	1 838	4 783	6 622	2 093	1 133	2 856	12 704	37 798
Q3	1 178	7 662	8 840	4 686	3 093	1 145	7 809	25 573	1 759	4 922	6 680	1 956	1 373	3 027	13 036	38 609

Users of these data should note that there may be instances where the period on period growths for the same component differ between tables. This is due to the growth rates being calculated at a higher precision than 1 dp within the production system. This accuracy is truncated when transferred into the published tables.

4M CONSTRUCTION OUTPUT: VALUE NON-SEASONALLY ADJUSTED CURRENT PRICES BY SECTOR

£ million

	New Housing			Other New Work				Repair and Maintenance				Other Work		All Repair and Maintenance		All Work
	Public housing	Private housing	Total new housing	Excluding Infrastructure				Housing				Public	Private			
				Infra-structure	Public	Private industrial	Private commercial	All new work	Public housing	Private housing	Total housing			Infra-structure		
	MV6L	MV6M	MVM5	MV6N	MV6O	MV6P	MV6Q	MV6R	MV6S	MV6T	MV6V	MV6W	MV6X	MV6Y	MV6Z	MV72
2011 Feb	404	1 182	1 586	1 115	1 106	260	1 737	5 803	632	1 104	1 736	594	390	709	3 429	9 232
Mar	468	1 400	1 868	1 366	1 298	296	2 063	6 891	779	1 308	2 087	751	489	825	4 153	11 044
Apr	416	1 291	1 707	1 281	1 095	257	1 899	6 238	566	1 181	1 747	614	386	706	3 454	9 692
May	435	1 376	1 812	1 362	1 111	297	1 966	6 549	574	1 218	1 792	613	378	735	3 518	10 067
Jun	455	1 593	2 048	1 405	1 148	312	2 126	7 038	610	1 293	1 903	639	381	733	3 657	10 696
Jul	384	1 446	1 829	1 334	1 167	271	2 109	6 710	585	1 279	1 865	684	477	735	3 761	10 472
Aug	395	1 411	1 806	1 280	1 191	286	2 150	6 713	587	1 255	1 842	697	507	800	3 846	10 559
Sep	435	1 416	1 850	1 275	1 113	283	2 194	6 716	589	1 318	1 907	685	474	790	3 856	10 572
Oct	401	1 444	1 846	1 245	1 037	302	2 219	6 649	609	1 420	2 029	666	421	761	3 877	10 526
Nov	410	1 449	1 859	1 341	1 045	309	2 264	6 817	635	1 459	2 094	655	433	780	3 962	10 779
Dec	351	1 314	1 665	1 323	1 004	255	1 924	6 171	547	1 288	1 836	620	380	731	3 567	9 737
2012 Jan	338	1 193	1 532	1 106	838	265	1 692	5 433	554	1 072	1 625	546	342	690	3 203	8 637
Feb	326	1 281	1 607	1 099	867	317	1 729	5 620	645	1 296	1 941	623	408	788	3 761	9 381
Mar	358	1 504	1 862	1 262	1 011	341	2 061	6 536	744	1 372	2 115	747	499	864	4 225	10 761
Apr	344	1 329	1 674	1 139	900	308	1 859	5 880	573	1 172	1 745	651	364	736	3 496	9 376
May	329	1 409	1 738	1 131	936	341	2 008	6 154	631	1 309	1 941	678	381	780	3 779	9 933
Jun	345	1 453	1 798	1 151	856	301	1 925	6 031	610	1 215	1 825	664	363	752	3 604	9 634
Jul	344	1 347	1 692	1 137	942	330	1 889	5 991	647	1 385	2 032	660	438	801	3 932	9 922
Aug	328	1 285	1 614	1 339	1 006	296	1 944	6 199	644	1 237	1 880	621	516	779	3 796	9 995
Sep	338	1 364	1 702	1 230	913	310	1 830	5 985	647	1 186	1 833	604	442	783	3 661	9 646
Oct	338	1 511	1 849	1 360	957	339	2 051	6 556	691	1 349	2 040	651	423	815	3 929	10 485
Nov	339	1 458	1 797	1 345	910	338	1 976	6 366	700	1 363	2 062	673	431	815	3 982	10 348
Dec	320	1 248	1 568	1 126	741	323	1 662	5 422	562	1 167	1 728	554	354	660	3 297	8 719
2013 Jan	258	1 121	1 379	1 056	665	289	1 679	5 067	579	1 082	1 661	573	365	672	3 270	8 338
Feb	301	1 262	1 563	1 170	752	326	1 731	5 541	654	1 152	1 806	651	403	739	3 600	9 141
Mar	345	1 368	1 713	1 393	888	309	1 924	6 227	760	1 259	2 019	719	477	809	4 024	10 251
Apr	332	1 489	1 821	1 227	808	296	1 832	5 985	617	1 286	1 904	609	409	805	3 727	9 712
May	352	1 522	1 874	1 256	875	296	1 928	6 230	605	1 340	1 945	653	417	816	3 831	10 061
Jun	405	1 686	2 091	1 314	849	291	1 885	6 430	590	1 362	1 952	636	414	828	3 830	10 260
Jul	360	1 602	1 962	1 304	943	292	2 092	6 593	600	1 452	2 052	710	498	837	4 096	10 689
Aug	367	1 564	1 932	1 324	967	316	2 108	6 646	632	1 368	2 000	716	555	884	4 154	10 800
Sep	382	1 603	1 984	1 225	955	274	2 183	6 622	627	1 430	2 058	696	490	859	4 102	10 724
Oct	424	1 824	2 248	1 471	908	294	2 305	7 226	670	1 569	2 239	757	493	903	4 392	11 618
Nov	427	1 704	2 132	1 366	869	287	2 116	6 769	651	1 551	2 201	702	453	849	4 206	10 976
Dec	391	1 633	2 024	1 228	770	289	1 845	6 156	561	1 319	1 880	664	376	760	3 679	9 835
2014 Jan	372	1 631	2 003	1 145	703	260	1 888	5 998	630	1 292	1 922	670	398	749	3 739	9 737
Feb	422	1 588	2 011	1 197	728	330	1 955	6 221	641	1 379	2 020	691	409	820	3 940	10 160
Mar	487	1 829	2 316	1 331	870	357	2 216	7 090	757	1 531	2 287	789	479	887	4 442	11 532
Apr	435	1 894	2 330	1 216	848	350	2 102	6 846	622	1 463	2 086	696	461	872	4 114	10 960
May	497	1 940	2 436	1 257	820	371	2 104	6 989	612	1 464	2 076	707	420	867	4 070	11 059
Jun	556	2 130	2 686	1 227	854	370	2 143	7 280	637	1 495	2 132	725	430	930	4 216	11 496
Jul	499	2 145	2 644	1 307	936	384	2 295	7 565	658	1 600	2 258	764	504	931	4 457	12 022
Aug	516	1 980	2 495	1 253	976	361	2 168	7 254	644	1 525	2 170	752	571	913	4 405	11 659
Sep	522	2 124	2 646	1 327	937	378	2 294	7 582	668	1 565	2 234	747	567	962	4 511	12 093
Oct	513	2 261	2 774	1 411	965	346	2 390	7 886	668	1 661	2 329	831	474	916	4 550	12 436
Nov	495	2 136	2 631	1 393	907	352	2 283	7 567	675	1 573	2 248	763	415	942	4 367	11 934
Dec	474	1 961	2 435	1 320	818	343	2 105	7 021	572	1 418	1 990	667	391	851	3 899	10 921
2015 Jan	392	1 807	2 199	1 414	681	336	1 950	6 580	605	1 256	1 861	705	352	782	3 700	10 280
Feb	438	1 861	2 299	1 514	766	391	2 079	7 050	657	1 295	1 952	702	379	857	3 890	10 939
Mar	483	2 181	2 664	1 910	896	400	2 233	8 103	820	1 577	2 397	948	446	941	4 731	12 834
Apr	465	2 261	2 726	1 767	828	379	2 121	7 821	618	1 497	2 116	725	363	880	4 084	11 905
May	425	2 244	2 669	1 692	839	375	2 151	7 726	629	1 495	2 124	674	342	878	4 018	11 744
Jun	468	2 420	2 889	1 704	908	397	2 354	8 252	667	1 639	2 306	702	355	925	4 289	12 540
Jul	389	2 282	2 670	1 858	982	445	2 391	8 346	664	1 678	2 343	763	428	956	4 489	12 835
Aug	351	2 080	2 431	1 730	969	416	2 283	7 830	640	1 508	2 148	662	472	907	4 188	12 018
Sep	378	2 209	2 587	1 724	958	431	2 309	8 010	695	1 652	2 347	650	486	1 015	4 498	12 508
Oct	374	2 407	2 781	1 780	922	401	2 533	8 418	670	1 735	2 405	681	442	1 010	4 538	12 956
Nov	365	2 280	2 644	1 668	933	407	2 433	8 086	660	1 701	2 361	676	425	998	4 461	12 548
Dec	364	2 266	2 630	1 728	848	354	2 153	7 713	583	1 478	2 061	608	377	929	3 975	11 687
2016 Jan	328	1 976	2 303	1 421	752	307	2 113	6 896	584	1 347	1 932	559	364	841	3 697	10 593
Feb	339	2 267	2 606	1 561	817	334	2 309	7 627	689	1 514	2 203	630	391	951	4 174	11 802
Mar	418	2 564	2 983	1 817	916	384	2 439	8 539	804	1 595	2 399	707	414	1 012	4 532	13 071
Apr	354	2 580	2 935	1 556	920	389	2 356	8 156	617	1 591	2 208	703	390	936	4 236	12 392
May	383	2 538	2 921	1 596	952	403	2 442	8 316	601	1 542	2 143	697	360	924	4 124	12 439
Jun	452	2 769	3 222	1 517	946	396	2 541	8 622	621	1 650	2 271	693	384	997	4 345	12 967
Jul	387	2 566	2 953	1 568	1 027	378	2 493	8 420	586	1 647	2 232	660	417	969	4 278	12 698
Aug	381	2 516	2 897	1 535	1 060	378	2 625	8 495	562	1 605	2 167	649	509	1 036	4 360	12 855
Sep	410	2 580	2 990	1 583	1 006	389	2 691	8 658	611	1 670	2 281	647	448	1 022	4 398	13 056
Oct	406	2 706	3 112	1 595	923	389	2 681	8 700	588	1 692	2 280	681	401	1 039	4 401	13 101
Nov	429	2 665	3 094	1 684	1 008	376	2 585	8 747	589	1 769	2 359	661	381	1 010	4 411	13 158

Users of these data should note that there may be instances where the period on period growths for the same component differ between tables. This is due to the growth rates being calculated at a higher precision than 1 dp within the production system. This accuracy is truncated when transferred into the published tables.

9A.A CONSTRUCTION OUTPUT: IMPLIED PRICE DEFLATOR NON-SEASONALLY ADJUSTED INDEX NUMBER

BY SECTOR

Index 2013 = 100

	New Housing			Other New Work				Repair and Maintenance					All Repair and Maintena- nce	All Work
	Public housing	Private housing	Total new housing	Infra- structure	Excluding Infrastructure			All new work	Housing			Non housing R&M		
					Public	Private industri- al	Private commerci- al		Public housing	Private housing	Total housing			
	MVK3	MVK4	MVM6	MVK5	MVK6	MVK7	MVK8	MVK9	MVKB	MVL2	MVL3	MVL4	MVL5	MVL6
1997	55.9	49.2	50.0	65.8	58.6	60.5	57.2	57.4	59.2	39.4	45.7	58.9	51.3	54.8
1998	59.2	52.6	53.2	65.6	60.7	64.2	61.6	60.4	61.9	40.9	47.2	61.3	53.2	57.4
1999	63.5	57.8	58.3	66.3	62.8	63.7	65.8	63.8	63.6	41.7	48.2	62.6	54.3	59.9
2000	66.2	60.8	61.3	73.9	65.7	67.0	68.8	67.4	66.6	43.6	50.2	65.4	56.9	63.1
2001	70.6	66.2	66.7	76.7	71.5	65.5	74.5	71.9	71.2	44.3	51.5	67.8	59.0	66.4
2002	75.1	72.2	72.5	77.3	73.5	75.9	80.2	76.9	72.3	47.2	53.4	70.6	61.3	70.3
2003	79.6	75.8	76.2	76.1	77.1	79.0	85.7	79.9	74.3	52.6	58.4	77.9	67.5	74.8
2004	85.6	78.6	79.3	76.7	81.3	83.7	86.3	82.0	74.8	57.9	62.9	82.0	71.5	78.0
2005	92.6	83.2	84.1	79.8	87.4	91.6	92.9	87.6	77.9	65.1	69.1	86.2	77.2	83.5
2006	99.1	86.8	88.1	85.7	91.1	94.7	97.5	92.1	83.2	70.8	74.7	88.0	81.2	88.0
2007	104.4	89.5	91.3	91.4	95.7	98.7	100.8	96.1	88.4	77.5	80.9	92.0	86.4	92.5
2008	109.4	94.4	96.5	92.3	102.8	105.7	101.8	99.7	92.9	83.5	86.5	94.8	90.7	96.2
2009	108.2	95.3	97.7	89.2	101.2	99.1	98.6	97.5	95.0	86.4	89.3	96.6	92.9	95.6
2010	102.9	94.1	96.1	87.6	92.8	89.9	92.8	92.6	93.9	87.4	89.6	96.5	92.8	92.7
2011	101.2	95.3	96.6	91.4	92.8	94.0	92.7	93.6	93.8	91.2	92.0	97.4	94.6	94.0
2012	99.5	97.6	98.0	96.2	96.0	97.2	95.8	96.6	97.2	95.7	96.2	98.4	97.3	96.9
2013	100.0	100.0	100.0	100.0	100.0	100.0	100.0	100.0	100.0	100.0	100.0	100.0	100.0	100.0
2014	102.4	104.0	103.7	104.2	102.9	102.6	104.2	103.7	101.5	102.5	102.2	101.0	101.6	102.9
2015	104.9	106.5	106.3	106.4	105.4	104.5	106.7	106.2	102.3	103.4	103.1	102.3	102.8	105.0

Users of these data should note that there may be instances where the period on period growths for the same component differ between tables. This is due to the growth rates being calculated at a higher precision than 1 dp within the production system. This accuracy is truncated when transferred into the published tables.

9A.Q CONSTRUCTION OUTPUT: IMPLIED PRICE DEFLATOR NON-SEASONALLY ADJUSTED INDEX NUMBERS

BY SECTOR

Index 2013 = 100

	New Housing				Other New Work				Repair and Maintenance					All Repair and Maintena- nce	All Work
	Public housing	Private housing	Total new housing	Infrastr- ucture	Excluding Infrastructure			All new work	Housing			Non housing R&M			
					Public	Private industri- al	Private commerci- al		Public housing	Private housing	Total housing				
	MVK3	MVK4	MVM6	MVK5	MVK6	MVK7	MVK8	MVK9	MVKB	MVL2	MVL3	MVL4	MVL5	MVL6	
2001 Q4	72.1	68.3	68.7	79.0	73.0	68.9	76.3	74.0	74.0	43.9	51.9	68.4	59.7	68.0	
2002 Q1	73.9	68.8	69.4	79.5	73.0	74.7	77.6	75.4	69.2	45.7	52.1	68.4	59.8	68.7	
Q2	75.9	73.4	73.7	80.2	73.0	77.4	79.7	77.6	71.3	46.4	52.5	69.9	60.4	70.3	
Q3	74.4	72.8	73.0	74.3	73.3	75.0	80.8	76.5	73.7	47.3	53.5	71.8	62.0	70.4	
Q4	76.0	73.8	74.1	75.0	74.6	76.3	82.7	77.9	75.0	49.5	55.4	72.4	63.1	71.6	
2003 Q1	77.1	74.0	74.3	75.3	75.3	77.1	83.8	78.3	74.5	50.7	57.2	75.5	65.9	73.2	
Q2	79.1	75.7	76.1	76.2	76.8	78.8	85.3	79.7	75.0	51.4	57.5	77.0	66.4	74.1	
Q3	80.4	76.5	76.9	76.5	77.8	80.1	86.4	80.5	73.8	52.7	58.6	79.7	68.4	75.4	
Q4	81.7	76.9	77.4	76.5	78.5	80.1	87.1	81.1	73.7	55.4	60.4	79.5	69.2	76.3	
2004 Q1	83.4	77.4	78.0	76.6	79.5	80.1	86.2	81.0	73.9	55.7	61.1	80.5	69.9	76.6	
Q2	84.8	78.0	78.7	76.6	80.4	81.5	85.4	81.3	74.2	56.4	61.7	81.3	70.5	77.2	
Q3	86.5	79.1	79.8	76.8	81.9	84.9	86.2	82.3	75.4	58.2	63.2	83.2	72.2	78.4	
Q4	87.9	79.8	80.6	77.1	83.4	88.2	87.3	83.5	75.8	61.2	65.5	83.1	73.6	79.7	
2005 Q1	89.7	81.0	81.9	77.8	85.0	89.9	89.4	84.9	76.9	62.5	67.3	84.3	75.2	81.1	
Q2	91.6	82.6	83.4	79.0	86.6	91.5	92.2	86.9	77.9	64.8	69.0	86.7	77.3	83.2	
Q3	93.6	84.2	85.0	80.5	88.3	92.4	94.1	88.5	78.3	65.6	69.4	86.8	77.8	84.3	
Q4	95.4	85.0	86.0	82.0	89.6	92.7	96.1	89.9	78.4	67.6	70.8	87.1	78.6	85.6	
2006 Q1	97.2	86.7	87.8	83.4	90.3	93.0	96.9	91.2	81.3	68.5	72.5	87.7	79.8	86.9	
Q2	98.6	86.7	88.0	85.0	90.8	94.3	97.6	91.9	83.8	70.0	74.2	87.9	80.8	87.7	
Q3	99.7	86.6	88.0	86.5	91.3	95.4	97.7	92.4	84.1	71.3	75.5	88.2	81.7	88.4	
Q4	100.7	87.1	88.5	87.8	92.0	96.0	97.9	93.0	83.4	73.3	76.5	88.4	82.4	89.0	
2007 Q1	102.3	88.4	90.0	89.5	93.0	96.6	98.6	94.1	84.7	74.9	78.2	88.5	83.3	90.1	
Q2	103.8	89.1	90.9	91.1	94.5	97.7	99.6	95.2	88.7	76.0	79.8	92.3	85.9	91.8	
Q3	105.1	89.7	91.6	92.0	96.5	99.2	102.4	97.0	90.0	77.8	81.6	93.5	87.6	93.6	
Q4	106.6	90.7	92.6	92.9	98.9	101.4	102.7	98.1	90.1	81.4	84.0	93.7	88.9	94.7	
2008 Q1	108.0	92.4	94.4	92.9	100.8	103.6	102.2	98.9	90.0	81.7	84.3	93.9	89.2	95.3	
Q2	109.2	93.9	95.9	92.7	102.6	105.6	102.3	99.6	93.1	83.2	86.3	94.8	90.6	96.1	
Q3	109.8	95.2	97.3	91.9	103.5	106.6	101.4	99.9	93.7	84.5	87.5	95.2	91.4	96.6	
Q4	110.7	96.3	98.4	91.7	104.3	107.1	101.2	100.3	94.7	84.8	87.7	95.5	91.5	96.7	
2009 Q1	109.9	96.3	98.6	90.4	104.0	105.0	100.2	99.4	97.2	86.9	90.3	95.4	92.8	96.8	
Q2	108.9	95.0	97.4	89.2	102.5	101.2	99.0	97.9	94.3	86.2	88.9	95.7	92.2	95.6	
Q3	107.9	94.9	97.6	88.8	100.5	97.2	98.8	97.2	93.7	86.4	88.9	97.7	93.3	95.6	
Q4	106.2	94.9	97.3	88.3	97.9	93.0	96.5	95.3	94.8	86.1	89.0	97.6	93.3	94.5	
2010 Q1	104.5	93.9	96.3	86.9	94.9	90.1	94.4	93.3	94.1	87.0	89.6	97.2	93.2	93.3	
Q2	103.2	94.3	96.2	87.1	92.9	89.1	92.9	92.5	93.7	87.3	89.5	95.9	92.5	92.5	
Q3	102.2	94.1	95.9	87.7	91.8	89.6	92.1	92.2	93.8	87.4	89.4	96.2	92.6	92.3	
Q4	101.7	94.1	95.8	88.5	91.4	90.7	91.9	92.3	94.0	87.8	89.7	96.7	92.9	92.5	
2011 Q1	101.5	94.4	96.0	89.6	91.7	91.2	92.2	92.6	93.0	89.6	90.7	97.0	93.8	93.0	
Q2	101.4	94.8	96.2	90.7	92.4	92.7	92.7	93.2	93.3	90.7	91.5	97.1	94.2	93.6	
Q3	101.2	95.6	96.8	91.8	93.2	95.1	92.7	93.8	93.7	91.7	92.3	97.6	95.0	94.3	
Q4	100.8	96.5	97.4	93.3	94.1	97.0	93.2	94.7	95.3	92.7	93.5	97.8	95.6	95.0	
2012 Q1	100.3	97.2	97.8	94.8	94.9	97.6	94.6	95.8	96.3	94.7	95.2	98.8	97.0	96.2	
Q2	99.7	97.4	97.8	95.9	95.6	97.2	95.6	96.4	97.1	94.8	95.5	98.6	97.1	96.7	
Q3	99.1	97.8	98.1	96.6	96.4	96.8	96.6	97.0	97.3	96.4	96.7	97.9	97.3	97.1	
Q4	98.7	98.1	98.2	97.5	97.2	97.0	96.7	97.4	97.9	97.1	97.4	98.2	97.8	97.6	
2013 Q1	99.0	98.5	98.6	98.4	98.3	98.2	98.0	98.3	98.6	98.9	98.7	98.4	98.5	98.4	
Q2	99.7	99.1	99.2	99.4	99.5	99.6	99.3	99.3	100.7	99.4	99.8	100.4	100.1	99.6	
Q3	100.3	100.3	100.3	100.5	100.6	100.6	100.3	100.4	100.2	100.3	100.3	100.6	100.4	100.4	
Q4	101.0	102.1	101.9	101.7	101.6	101.6	102.4	101.9	100.5	101.4	101.1	100.7	100.9	101.6	
2014 Q1	102.6	104.2	103.9	103.8	102.7	102.4	104.0	103.6	101.2	102.2	101.9	100.9	101.4	102.8	
Q2	101.9	103.5	103.1	103.6	102.4	101.8	103.7	103.1	101.4	102.4	102.2	100.9	101.5	102.5	
Q3	102.5	104.1	103.8	104.6	103.1	102.7	104.4	103.9	101.7	102.7	102.4	101.1	101.7	103.1	
Q4	102.7	104.3	104.0	104.9	103.3	103.4	104.6	104.2	101.6	102.7	102.4	101.1	101.8	103.3	
2015 Q1	104.0	105.6	105.3	105.5	104.2	104.0	105.5	105.1	102.0	103.0	102.6	101.9	102.3	104.1	
Q2	104.3	105.9	105.7	105.3	104.3	103.3	105.7	105.3	102.3	103.4	103.1	102.4	102.8	104.4	
Q3	105.5	107.2	107.0	107.4	106.4	105.4	107.7	107.1	102.5	103.6	103.3	102.4	102.9	105.6	
Q4	105.7	107.3	107.2	107.4	106.6	105.2	107.9	107.2	102.6	103.7	103.4	102.5	103.0	105.7	
2016 Q1	107.1	108.8	108.6	108.0	107.6	106.4	109.0	108.3	102.7	103.8	103.4	102.6	103.1	106.4	
Q2	107.7	109.4	109.3	108.4	107.9	107.4	109.3	108.7	103.0	104.0	103.8	102.9	103.4	106.9	
Q3	108.3	110.0	109.8	106.5	108.7	109.1	110.0	109.0	103.4	104.5	104.3	103.3	103.8	107.2	

Users of these data should note that there may be instances where the period on period growths for the same component differ between tables. This is due to the growth rates being calculated at a higher precision than 1 dp within the production system. This accuracy is truncated when transferred into the published tables.

9A.M CONSTRUCTION OUTPUT: IMPLIED PRICE DEFLATOR NON-SEASONALLY ADJUSTED INDEX NUMBERS

BY SECTOR

Index 2013 = 100

	New Housing			Other New Work					Repair and Maintenance					All Repair and Maintena- nce	All Work
	Public housing	Private housing	Total new housing	Infra- struc- ture	Excluding Infrastructure			All new work	Housing			Non housing R&M			
					Public	Private industri- al	Private commerci- al		Public housing	Private housing	Total housing				
	MVK3	MVK4	MVM6	MVK5	MVK6	MVK7	MVK8	MVK9	MVKB	MVL2	MVL3	MVL4	MVL5	MVL6	
2011 Feb	101.5	94.3	96.0	89.6	91.7	91.2	92.2	92.6	92.9	89.7	90.8	97.0	93.8	93.0	
Mar	101.5	94.5	96.1	90.0	91.9	91.5	92.4	92.8	92.9	90.1	91.1	97.0	93.9	93.2	
Apr	101.4	94.6	96.1	90.4	92.1	92.0	92.6	93.0	93.1	90.4	91.2	97.0	94.0	93.4	
May	101.4	94.8	96.3	90.7	92.3	92.7	92.7	93.2	93.3	90.7	91.5	97.0	94.2	93.6	
Jun	101.3	95.1	96.3	91.0	92.6	93.5	92.7	93.5	93.4	91.0	91.8	97.2	94.4	93.8	
Jul	101.2	95.3	96.5	91.4	92.9	94.3	92.7	93.6	93.4	91.5	92.1	97.5	94.7	94.0	
Aug	101.2	95.6	96.7	91.8	93.2	95.2	92.6	93.8	93.6	91.8	92.4	97.7	95.0	94.3	
Sep	101.1	95.9	97.0	92.3	93.5	95.9	92.7	94.1	94.1	92.0	92.6	97.7	95.1	94.5	
Oct	101.0	96.2	97.2	92.8	93.8	96.5	92.8	94.4	94.7	92.1	92.9	97.7	95.2	94.7	
Nov	100.8	96.5	97.4	93.3	94.1	97.0	93.1	94.7	95.4	92.5	93.4	97.7	95.5	95.0	
Dec	100.7	96.8	97.6	93.8	94.4	97.4	93.6	95.1	95.8	93.4	94.1	98.1	96.0	95.4	
2012 Jan	100.5	97.1	97.8	94.3	94.7	97.6	94.1	95.5	96.1	94.3	94.8	98.5	96.6	95.9	
Feb	100.3	97.3	97.9	94.8	94.9	97.7	94.6	95.8	96.3	94.8	95.3	98.9	97.0	96.3	
Mar	100.1	97.3	97.9	95.2	95.1	97.6	94.9	96.0	96.6	94.9	95.4	99.0	97.2	96.5	
Apr	99.9	97.3	97.8	95.6	95.4	97.4	95.2	96.2	97.0	94.6	95.4	98.9	97.1	96.6	
May	99.7	97.3	97.8	95.9	95.6	97.2	95.5	96.4	97.2	94.6	95.4	98.7	97.0	96.6	
Jun	99.5	97.5	97.9	96.1	95.9	97.0	96.0	96.6	97.2	95.1	95.8	98.3	97.0	96.8	
Jul	99.3	97.6	98.0	96.4	96.1	96.8	96.4	96.9	97.2	95.9	96.3	98.0	97.1	97.0	
Aug	99.1	97.8	98.1	96.6	96.4	96.7	96.7	97.1	97.2	96.5	96.7	97.8	97.3	97.1	
Sep	98.9	97.9	98.1	96.9	96.6	96.7	96.7	97.2	97.4	96.8	97.0	97.9	97.4	97.3	
Oct	98.8	98.0	98.2	97.2	96.9	96.8	96.5	97.2	97.7	96.8	97.1	98.1	97.6	97.4	
Nov	98.7	98.1	98.2	97.5	97.2	97.0	96.6	97.4	97.9	97.0	97.3	98.2	97.8	97.5	
Dec	98.7	98.2	98.3	97.8	97.5	97.3	96.9	97.6	98.0	97.6	97.7	98.1	98.0	97.7	
2013 Jan	98.8	98.3	98.4	98.1	97.9	97.7	97.4	98.0	98.1	98.3	98.2	98.0	98.1	98.0	
Feb	99.0	98.5	98.6	98.4	98.3	98.2	98.0	98.3	98.5	99.0	98.7	98.2	98.5	98.4	
Mar	99.2	98.7	98.7	98.7	98.7	98.7	98.6	98.7	99.3	99.3	99.2	98.9	99.0	98.8	
Apr	99.4	98.8	99.0	99.0	99.1	99.2	99.0	99.0	100.3	99.3	99.6	99.8	99.7	99.3	
May	99.7	99.1	99.2	99.4	99.5	99.7	99.4	99.4	100.9	99.4	99.9	100.5	100.2	99.7	
Jun	99.9	99.4	99.5	99.7	99.9	100.0	99.6	99.6	100.9	99.6	100.0	100.8	100.4	99.9	
Jul	100.1	99.8	99.9	100.1	100.2	100.3	99.9	100.0	100.5	99.9	100.1	100.7	100.4	100.2	
Aug	100.3	100.3	100.3	100.5	100.6	100.6	100.2	100.4	100.1	100.3	100.3	100.5	100.3	100.4	
Sep	100.6	100.8	100.7	100.9	100.9	100.9	100.8	100.8	100.1	100.7	100.5	100.5	100.5	100.7	
Oct	100.8	101.4	101.3	101.3	101.3	101.2	101.6	101.4	100.2	101.1	100.8	100.6	100.7	101.1	
Nov	101.0	102.1	101.8	101.7	101.6	101.5	102.4	101.9	100.5	101.4	101.2	100.7	101.0	101.6	
Dec	101.3	102.8	102.5	102.1	102.0	101.9	103.2	102.5	100.7	101.7	101.4	100.8	101.1	102.0	
2014 Jan	103.0	104.6	104.3	104.4	103.4	103.3	104.7	104.2	101.0	102.0	101.7	101.3	101.5	103.2	
Feb	102.6	104.2	103.8	103.7	102.5	102.0	103.8	103.5	101.3	102.3	102.0	100.7	101.4	102.7	
Mar	102.3	103.8	103.5	103.3	102.2	101.8	103.5	103.2	101.3	102.4	102.0	100.8	101.4	102.5	
Apr	101.7	103.3	103.0	103.2	102.1	101.5	103.4	102.9	101.3	102.3	102.1	100.8	101.5	102.4	
May	101.5	103.1	102.8	103.2	102.2	101.7	103.5	102.8	101.3	102.4	102.1	100.8	101.4	102.3	
Jun	102.3	103.9	103.6	104.4	102.9	102.2	104.2	103.6	101.5	102.6	102.3	101.0	101.6	102.9	
Jul	102.7	104.3	104.0	104.8	103.3	102.8	104.6	104.1	101.6	102.6	102.3	101.1	101.7	103.2	
Aug	102.2	103.8	103.5	104.2	102.8	102.3	104.1	103.5	101.7	102.8	102.5	101.1	101.7	102.8	
Sep	102.6	104.2	103.9	104.9	103.2	102.9	104.5	104.0	101.7	102.8	102.5	101.1	101.7	103.2	
Oct	102.6	104.2	103.9	105.0	103.3	103.1	104.6	104.1	101.6	102.6	102.4	101.0	101.7	103.2	
Nov	102.9	104.5	104.2	105.0	103.4	103.8	104.7	104.3	101.6	102.6	102.3	101.1	101.7	103.4	
Dec	102.7	104.3	104.0	104.7	103.2	103.5	104.5	104.1	101.7	102.7	102.5	101.2	101.8	103.3	
2015 Jan	103.1	104.7	104.4	105.3	103.3	103.5	104.6	104.4	101.9	102.9	102.6	101.7	102.1	103.6	
Feb	103.8	105.4	105.1	105.1	104.0	103.6	105.3	104.9	102.0	103.0	102.6	101.9	102.3	104.0	
Mar	105.2	106.8	106.5	106.2	105.2	104.7	106.5	106.2	102.1	103.1	102.7	102.2	102.5	104.8	
Apr	104.2	105.9	105.6	105.1	104.1	103.5	105.4	105.1	102.2	103.2	103.0	102.3	102.6	104.3	
May	104.2	105.8	105.6	105.3	104.2	103.1	105.5	105.2	102.4	103.5	103.2	102.5	102.9	104.4	
Jun	104.5	106.2	105.9	105.6	104.7	103.3	106.0	105.5	102.4	103.5	103.2	102.4	102.9	104.6	
Jul	106.1	107.7	107.6	107.8	106.8	105.7	108.1	107.5	102.5	103.6	103.4	102.4	102.9	105.9	
Aug	105.3	106.9	106.8	107.2	106.1	105.2	107.5	106.9	102.5	103.6	103.3	102.4	102.9	105.5	
Sep	105.2	106.8	106.7	107.1	106.2	105.2	107.6	106.8	102.5	103.5	103.2	102.4	102.9	105.4	
Oct	105.6	107.3	107.1	107.5	106.6	105.3	107.9	107.2	102.7	103.7	103.5	102.6	103.1	105.8	
Nov	106.2	107.8	107.7	107.8	106.9	105.5	108.3	107.6	102.7	103.7	103.5	102.5	103.1	106.0	
Dec	105.3	106.9	106.8	107.0	106.2	104.8	107.6	106.8	102.5	103.6	103.4	102.5	103.0	105.5	
2016 Jan	106.7	108.4	108.2	107.6	107.4	105.8	108.7	108.0	102.6	103.7	103.4	102.6	103.1	106.2	
Feb	107.0	108.7	108.6	107.9	107.6	106.4	109.0	108.3	102.6	103.7	103.4	102.5	103.0	106.4	
Mar	107.6	109.3	109.1	108.3	107.8	107.0	109.2	108.6	102.9	103.9	103.5	102.7	103.2	106.7	
Apr	107.9	109.6	109.5	108.4	107.8	106.9	109.2	108.8	102.9	103.9	103.7	102.7	103.3	106.8	
May	107.7	109.3	109.2	108.2	107.8	107.4	109.1	108.6	102.9	104.0	103.8	103.0	103.4	106.9	
Jun	107.6	109.3	109.2	108.5	108.1	108.0	109.5	108.8	103.1	104.2	103.9	103.1	103.6	107.0	
Jul	108.3	110.0	109.8	106.7	108.6	109.1	110.0	109.0	103.2	104.3	104.1	103.2	103.7	107.2	
Aug	108.3	110.0	109.8	106.4	108.6	109.0	109.9	109.0	103.4	104.5	104.3	103.2	103.8	107.2	
Sep	108.3	110.0	109.8	106.5	108.8	109.1	110.2	109.1	103.6	104.6	104.4	103.3	103.9	107.3	
Oct	108.8	110.5	110.4	106.7	109.0	109.8	110.4	109.4	104.0	105.1	104.9	103.6	104.3	107.7	
Nov	109.3	111.0	110.8	107.1	109.4	110.2	110.8	109.8	103.9	105.0	104.8	103.6	104.3	107.9	

Users of these data should note that there may be instances where the period on period growths for the same component differ between tables. This is due to the growth rates being calculated at a higher precision than 1 dp within the production system. This accuracy is truncated when transferred into the published tables.