

Statistical bulletin

Construction output in Great Britain: Nov 2016

Short-term measures of output by the construction industry in Great Britain and contracts awarded for new construction work in the UK.

Contact:
Kate Davies
construction.statistics@ons.gsi.
gov.uk

Release date:
11 January 2017

Next release:
10 February 2017

Correction

12 January 2017

A small error occurred in Figure 1: Rolling 3 month on 3 month and monthly all work, November 2016, due to a processing error. We have corrected this error. You can see all previous versions of this data on the previous versions page. We apologise for any inconvenience.

Table of contents

1. [Main points](#)
2. [Things you need to know about this release](#)
3. [Construction output in November 2016 shows a small contraction](#)
4. [Contributions to growth](#)
5. [Detailed growth rates](#)
6. [New housing continues to grow](#)
7. [Links to related statistics](#)
8. [What has changed in this publication?](#)
9. [Quality and methodology](#)

1 . Main points

- In November 2016, construction output fell by 0.2% compared with October 2016, largely due to a contraction in non-housing repair and maintenance.
- The underlying pattern as suggested by the 3 month on 3 month movement shows a slight contraction of 0.1%.
- Repair and maintenance provides the largest downwards pressure to construction output, falling both on the month and year.
- New work in November 2016 increased, with new housing output continuing to grow.

2 . Things you need to know about this release

The monthly business survey, Construction output collects output by sector from businesses in the construction industry within Great Britain. Output is defined as the amount chargeable to customers for building and civil engineering work done in the relevant period excluding VAT and payments to sub-contractors.

The survey's results are used to produce seasonally adjusted monthly, quarterly and annual estimates of output in the construction industry at current price and at chained volume measures (removing the effect of inflation). The estimates are widely used by private and public sector institutions, particularly by the [Bank of England](#) and [Her Majesty's Treasury](#) to assist in informed decision and policy making. Construction output is an important economic indicator and is also therefore used in the compilation of the output measure of [gross domestic product](#).

This November 2016 release contains revisions for October 2016 only. This means that we have incorporated additional data since this period.

Revisions can be made for a variety of reasons, the most common include:

- late responses to surveys and administrative sources, or changes to original returns
- forecasts being replaced by actual data
- revisions to seasonal adjustment factors, which are re-estimated every month and reviewed annually

This revisions period is consistent with the National Accounts revisions policy.

On 11 December 2014 the UK Statistics Authority announced its decision to suspend the designation of Construction output and new orders as National Statistics due to concerns about the quality of the [Construction Price and Cost Indices](#) used to remove the effects of inflation from the statistics.

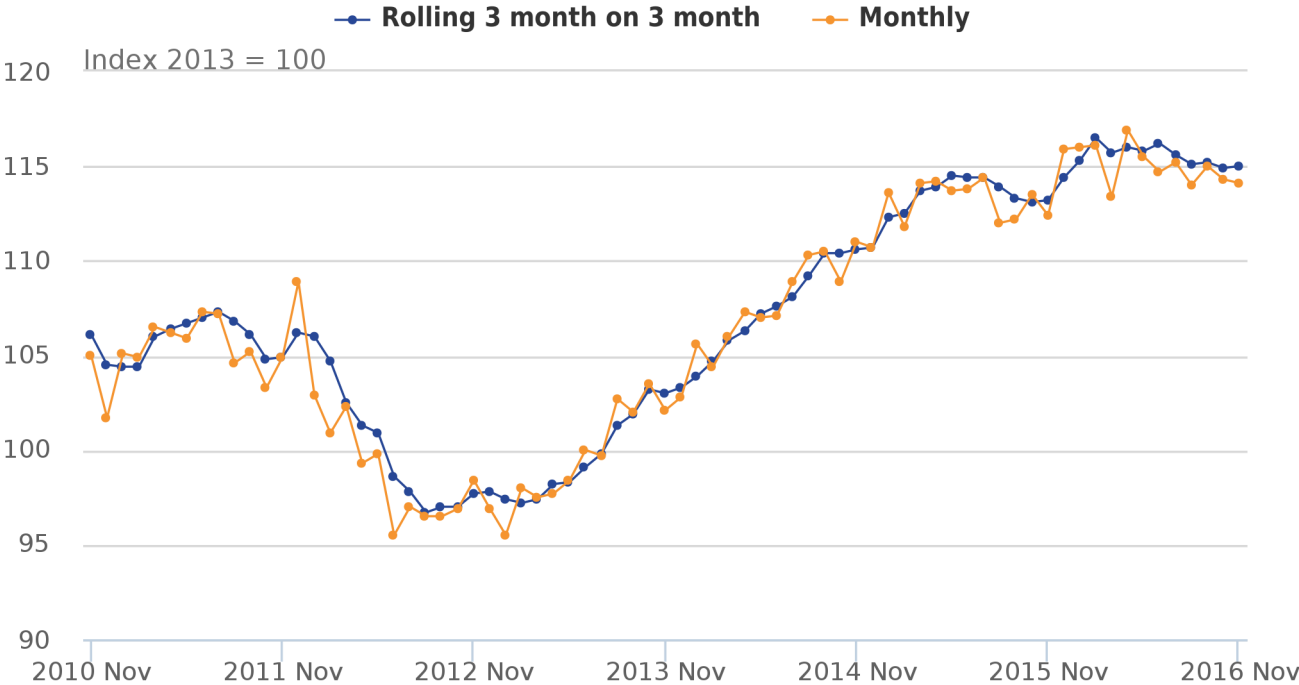
We took responsibility for the publication of the Construction Price and Cost Indices from the [Department of Business Innovation and Skills \(BIS\)](#) on 1 April 2015, introducing an interim solution for measuring output prices in June 2015 for all periods from January 2014 onwards. We are currently developing a long-term solution for the deflation of construction statistics.

Summary information can be found in the [Summary Quality and Methodology Information report](#).

3 . Construction output in November 2016 shows a small contraction

Figure 1: Rolling 3 month on previous 3 month and monthly all work, November 2016

Chained volume measure, seasonally adjusted, Great Britain



Source: Construction: Output and Employment – Office for National Statistics

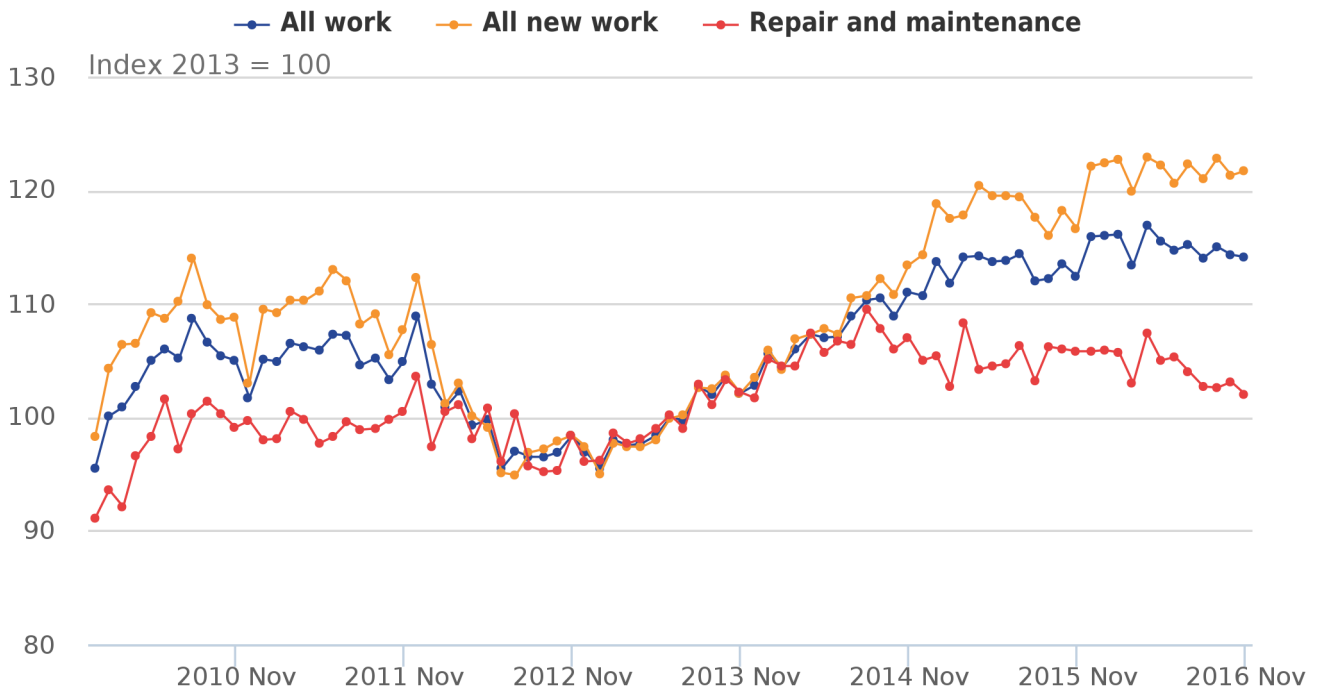
In November 2016, construction output decreased by 0.2% when compared with October 2016 and follows a month-on-month fall of 0.6% in October 2016. The monthly time series shows how volatile construction output can be, therefore the rolling 3 month on 3 month time series is also shown and provides a picture of the underlying trend within the construction industry.

The 3 month on 3 month rolling time series shows that construction output contracted by 0.1% following a similar pattern for recent months in that construction output is relatively flat.

4 . Contributions to growth

Figure 2: Components of all work, November 2016

Chained volume measure, seasonally adjusted, Great Britain



Source: Construction: Output and Employment – Office for National Statistics

Construction output can be broken down by different types of work, these are categorised into new work, and repair and maintenance as shown in Figure 2. The chart shows that through to mid-2014, new work, and repair and maintenance followed a similar pattern but that since reaching a level peak in August 2014, repair and maintenance has slowly contracted. Over the same period, new work has continued to increase, largely down to a rise in new housing work, however, the contraction in repair and maintenance provides a downwards drag to new work.

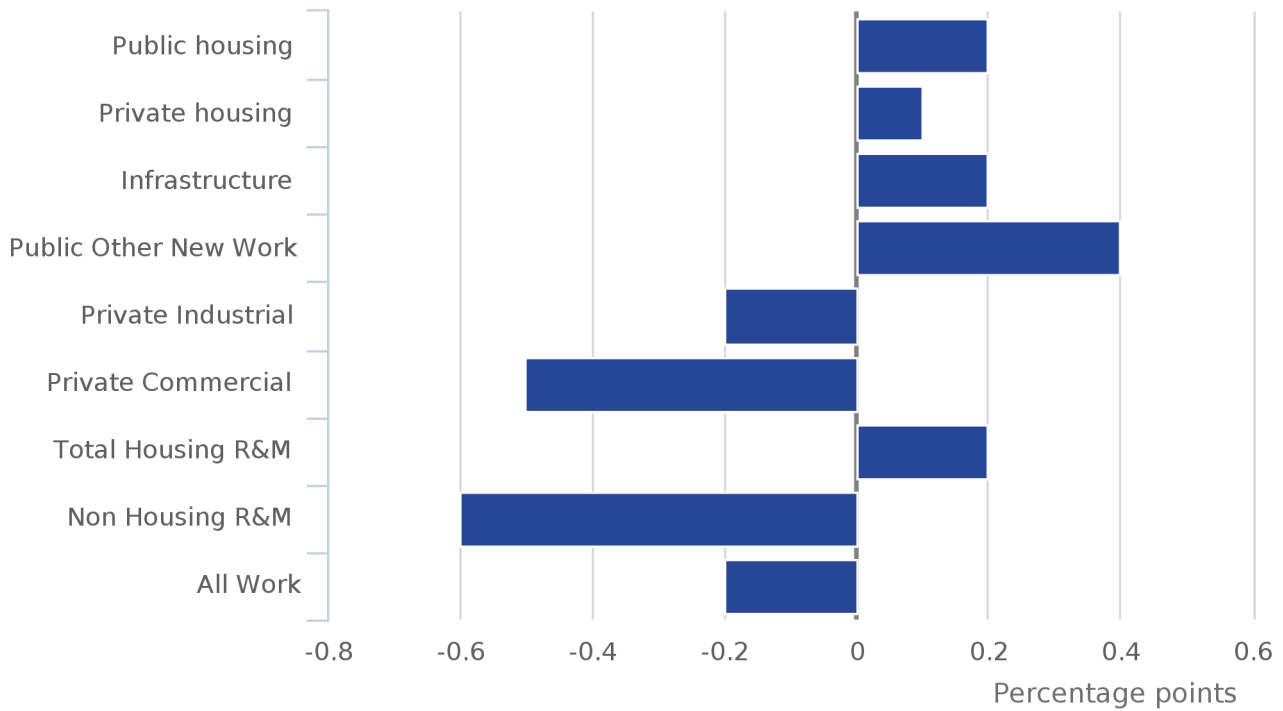
This longer-term trend is again seen in the monthly growth rates for November 2016, where new work increased by 0.3% and repair and maintenance contracted by 1.1%. When compared with November 2015, new work increased by 4.4% in November 2016 while repair and maintenance decreased by 3.6%.

It is worth noting that new work accounts for approximately two-thirds of all work, while repair and maintenance accounts for approximately one-third.

Figure 3 shows the contributions to growth for each of the main work types.

Figure 3: Contributions to the month-on-month volume growth from the main construction sectors

Great Britain, November 2016 compared with October 2016



Source: Construction: Output and Employment – Office for National Statistics

In November 2016, non-housing repair and maintenance provided the largest downward contribution to growth.

5 . Detailed growth rates

Table 1 provides a detailed description of the growth rates of each work type.

Table 1: Construction output main figures: November 2016

Seasonally adjusted, percentage change

Great Britain

	Most recent 3 months on a year earlier	Most recent 3 months on 3 months earlier	Most recent month on the same month a year ago	Most recent month on the previous month
Total all work	1.6	-0.1	1.5	-0.2
Total all new work	4.3	0.5	4.4	0.3
Total repair and maintenance	-3.2	-1.3	-3.6	-1.1
New housing				
Public	8.2	2.2	13.7	5.5
Private	12.6	1.1	12.5	0.6
Other new work				
Infrastructure	-6.1	1.9	-1.6	1.2
Excl infrastructure				
Public	1.4	-2.5	2.4	6.0
Private industrial	-9.7	1.0	-11.6	-6.0
Private commercial	7.2	-0.2	2.9	-2.6
Repair and maintenance				
Public housing	-12.3	-2.9	-11.7	-2.3
Private housing	-0.6	-0.2	0.7	2.3
Non-housing R&M	-2.4	-1.8	-4.4	-3.3

Source: Construction: Output and Employment – Office for National Statistics

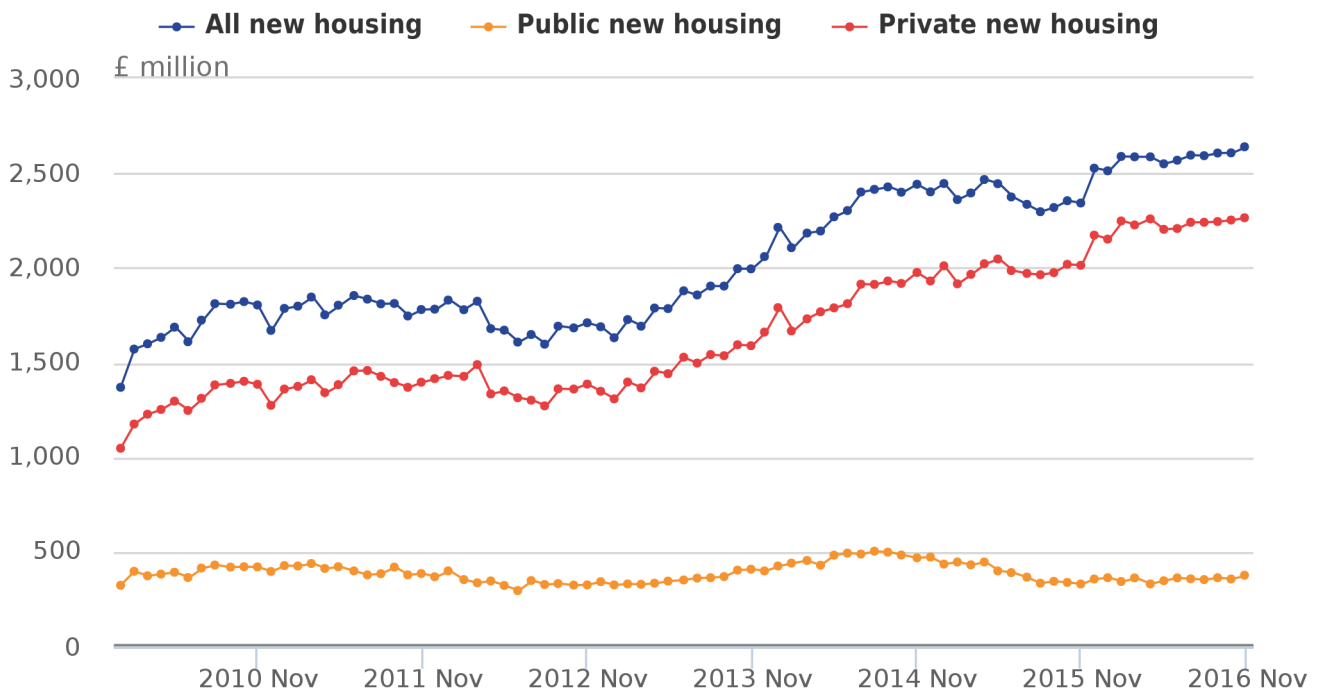
The greatest source of downwards pressure to the month-on-month growth rate for construction output came from non-housing repair and maintenance, followed by private commercial new work. Increased output in other work types was not sufficient to negate these falls month-on-month.

Compared with November 2015, new housing work provided the main contribution to the growth in all work.

6 . New housing continues to grow

Figure 4: Components of all new housing, November 2016

Chained volume measure, seasonally adjusted, Great Britain



Source: Construction: Output and Employment – Office for National Statistics

Despite the overall fall in all work in November 2016, new housing continued to grow at an increasing overall rate of 1.2% in comparison with October 2016, representing the biggest increment since February 2016. This has resulted in housing output reaching an all time high of £2,639 million, as seen in Figure 4.

The increase in housing has occurred in part as a result of the notable rise in public housing, which recovered from negative growth in October 2016 to increase by 5.5%. There was an increase of 13.7% compared with the same period a year ago, the largest month-on-year growth rise since December 2014. This high level of growth comes in the shadow of the government committing to “drive up the housing supply” by providing £8.0 billion to deliver over 400,000 affordable housing starts by 2020.

In addition, private sector housing continued to grow at a steady month-on-month rate of 0.6% compared with October 2016. However, similar to public housing, the private sector has experienced large growth in relation to the same period last year, at a rate of 12.5% which has been broadly consistent throughout 2016. This may be in part due to historically low interest rates facilitating borrowing for construction firms, coupled with the loosening of private housing planning restrictions, both of which could have contributed to the continued boom in private housing both in November 2016 and throughout the year.

7 . Links to related statistics

Output in the construction industry follows the [Eurostat Short Term Statistics \(STS\)](#) regulation for production in construction. Before any comparisons are made with the euro area or EU28, it is worth noting that the UK is the only member state to follow the [A method](#) for compiling [production in construction statistics](#).

The latest release of [production in construction](#) published by Eurostat on 19 December 2016 for October 2016 showed the seasonally adjusted production in the construction sector in both the Euro area (EA19) and EU28 when compared with September 2016. It should be noted that an accurate comparison cannot be made as Eurostat data are calculated on a 2010 equals 100 basis, while Great Britain data are calculated on a 2013 equals 100 basis.

Outside of the EU, the US Census Bureau release [Value of construction put in place](#) was published on 3 January 2017. This includes the total dollar value of construction work done in the US.

Other useful links

- [Department for Communities and Local Government](#) (Housing starts and completions)
- [Construction statistics in Northern Ireland](#)

8 . What has changed in this publication?

This is the first Construction output bulletin released as part of the [short-term indicators theme day](#). As such this bulletin now follows a more streamlined format and some tables such as response rates, previously found in the background notes, can now be found in the main datasets.

[Short-term indicators economic commentary](#) was published alongside this release, presenting new information on economic conditions in November 2016, with data available for output in production, construction and the trade balance.

9 . Quality and methodology

Our Monthly Construction Output survey measures output from the construction industry in Great Britain. It samples 8,000 businesses, with all businesses employing over 100 people or with an annual turnover of more than £60 million receiving a questionnaire by post every month.

The Construction [Quality and Methodology Information](#) document contains important information on:

- the strengths and limitations of the data
- the quality of the output: including the accuracy of the data and how it compares with related data
- uses and users
- how the output was created

1A.A CONSTRUCTION OUTPUT: VOLUME SEASONALLY ADJUSTED INDEX NUMBERS BY SECTOR

Index 2013 = 100

	New Housing			Other New Work				Repair and Maintenance					All Repair and Maintena- nce	All Work
	Public housing	Private housing	Total new housing	Infrastr- ucture	Excluding Infrastructure			All new work	Housing			Non housing R&M		
					Public	Private industri- al	Private commerci- al		Public housing	Private housing	Total housing			
	MV36	MV37	MVL7	MV38	MV39	MV3A	MV3B	MV3C	MV3D	MV3E	MV3F	MV3G	MV3H	MV3I
1997	44.0	84.2	76.4	77.3	50.3	208.4	92.1	83.5	115.3	113.7	115.2	85.1	98.5	91.3
1998	35.6	85.0	75.5	75.2	53.0	212.3	99.8	85.6	107.7	116.1	113.5	86.0	98.3	92.6
1999	30.9	76.5	67.6	73.1	59.7	219.1	111.7	88.2	103.3	114.6	110.8	85.5	96.8	93.8
2000	38.8	85.5	76.4	68.6	56.5	195.6	112.6	88.4	100.0	115.2	109.7	90.0	98.8	94.6
2001	39.7	79.8	72.0	73.4	57.0	199.7	111.8	88.3	94.6	120.2	110.5	98.3	103.7	96.3
2002	44.9	86.9	78.8	83.1	72.2	158.5	115.5	93.7	89.7	130.2	114.2	104.7	108.9	101.8
2003	51.1	108.5	97.4	78.3	90.5	167.3	111.3	99.4	101.4	127.2	117.3	107.7	111.9	106.7
2004	61.4	131.9	118.2	68.3	101.7	172.4	122.7	108.8	111.3	123.6	119.0	102.9	110.1	112.4
2005	57.7	135.7	120.6	65.5	91.5	168.9	117.4	105.6	110.5	112.6	111.8	105.5	108.3	109.7
2006	68.1	136.1	122.9	60.4	84.1	183.1	127.4	108.4	105.8	105.6	105.6	105.8	105.6	110.5
2007	78.6	133.9	123.2	59.6	82.6	178.8	140.2	112.2	100.3	102.9	101.9	108.3	105.1	112.9
2008	71.0	103.9	97.5	66.2	91.9	138.4	141.9	106.2	103.2	104.1	103.7	111.9	107.9	109.9
2009	72.5	71.4	71.6	75.8	111.2	97.1	106.3	89.9	100.4	91.0	94.1	101.0	97.6	95.4
2010	109.7	85.9	90.5	100.9	151.4	111.1	108.2	107.3	111.1	102.0	104.9	90.3	97.6	103.6
2011	112.1	93.7	97.2	109.4	140.0	100.6	110.9	109.9	102.1	102.8	102.6	96.4	99.5	105.9
2012	93.8	91.4	91.9	97.8	110.6	110.2	100.0	99.0	104.3	97.7	99.8	96.0	97.9	98.6
2013	100.0	100.0	100.0	100.0	100.0	100.0	100.0	100.0	100.0	100.0	100.0	100.0	100.0	100.0
2014	130.7	123.6	125.0	96.4	98.9	114.1	106.1	109.3	101.6	108.2	106.1	106.6	106.3	108.1
2015	107.0	134.4	129.0	132.9	97.0	125.1	107.4	118.6	102.1	110.4	107.7	102.8	105.3	113.5

Users of these data should note that there may be instances where the period on period growths for the same component differ between tables. This is due to the growth rates being calculated at a higher precision than 1 dp within the production system. This accuracy is truncated when transferred into the published tables.

1B.A CONSTRUCTION OUTPUT: VOLUME NON-SEASONALLY ADJUSTED INDEX NUMBERS BY SECTOR

Index 2013 = 100

	New Housing			Other New Work				Repair and Maintenance					All Repair and Maintena- nce	All Work
	Public housing	Private housing	Total new housing	Infra- structure	Excluding Infrastructure			All new work	Housing			Non housing R&M		
					Public	Private industri- al	Private commerci- al		Public housing	Private housing	Total housing			
	MV3J	MV3K	MVL8	MV3L	MV3M	MV3N	MV3O	MV3P	MV3Q	MV3R	MV3S	MV3T	MV3U	MV3V
1997	42.5	84.8	76.6	80.1	51.2	211.7	93.7	85.6	117.5	117.4	117.4	84.6	101.0	91.5
1998	34.4	85.6	75.6	77.8	53.9	215.5	101.5	87.8	109.7	119.8	116.5	85.5	101.0	92.9
1999	29.9	77.3	68.1	76.0	60.9	223.3	114.1	90.4	105.7	118.8	114.6	85.4	100.0	94.1
2000	37.5	86.1	76.7	71.1	57.6	198.9	114.7	90.6	102.1	119.0	113.6	89.6	101.6	94.8
2001	38.4	80.4	72.3	76.1	58.1	203.2	113.8	90.2	96.5	124.2	115.3	97.8	106.6	96.5
2002	43.4	87.6	79.0	86.1	73.4	161.0	117.5	95.5	91.5	134.4	120.6	104.2	112.4	102.0
2003	49.5	109.4	97.8	81.2	92.2	170.2	113.3	101.9	103.5	131.5	122.5	107.3	114.9	106.9
2004	59.7	133.5	119.2	71.1	104.0	175.9	125.5	112.0	114.0	128.2	123.6	102.9	113.2	112.5
2005	56.2	137.6	121.8	68.3	93.7	172.8	120.2	109.1	113.5	117.0	115.8	105.7	110.8	109.8
2006	66.5	138.6	124.6	63.3	86.4	188.1	131.0	112.1	109.0	110.2	109.8	106.4	108.1	110.5
2007	77.0	136.8	125.2	62.6	85.3	184.3	144.7	116.0	103.7	107.8	106.5	109.3	107.9	112.9
2008	69.7	106.4	99.2	69.7	95.0	142.8	146.7	109.5	106.9	109.2	108.5	113.1	110.8	110.0
2009	71.1	73.0	72.7	79.8	114.9	100.2	109.8	92.7	103.9	95.4	98.1	102.0	100.1	95.5
2010	109.7	85.9	90.5	100.9	151.4	111.1	108.2	107.3	111.1	102.0	104.9	90.3	97.6	103.6
2011	112.1	93.7	97.2	109.4	140.0	100.6	110.9	109.9	102.1	102.8	102.6	96.4	99.5	105.9
2012	93.8	91.4	91.9	97.8	110.6	110.2	100.0	99.0	104.3	97.7	99.8	96.0	97.9	98.6
2013	100.0	100.0	100.0	100.0	100.0	100.0	100.0	100.0	100.0	100.0	100.0	100.0	100.0	100.0
2014	130.2	123.7	124.9	96.3	98.3	115.1	105.4	109.0	101.7	108.5	106.3	106.6	106.4	108.0
2015	107.5	134.4	129.2	125.6	97.5	127.3	107.1	117.2	102.4	110.7	108.1	103.0	105.5	112.7

Users of these data should note that there may be instances where the period on period growths for the same component differ between tables. This is due to the growth rates being calculated at a higher precision than 1 dp within the production system. This accuracy is truncated when transferred into the published tables.

2A.A CONSTRUCTION OUTPUT: VOLUME SEASONALLY ADJUSTED BY SECTOR

£ million

	New Housing			Other New Work				Repair and Maintenance					All Repair and Maintenance	All Work
	Public housing	Private housing	Total new housing	Infra-structure	Excluding Infrastructure			All new work	Housing			Non housing R&M		
					Public	Private industrial	Private commercial		Public housing	Private housing	Total housing			
	MV3W	MV3X	MVL9	MV3Y	MV3Z	MV42	MV43	MV44	MV45	MV46	MV47	MV48	MV49	MV4A
1997	1 832	14 934	16 719	11 900	5 103	7 405	21 667	62 367	8 604	18 000	26 762	20 302	46 389	108 110
1998	1 484	15 084	16 513	11 571	5 378	7 544	23 482	64 008	8 037	18 377	26 364	20 525	46 274	109 715
1999	1 287	13 569	14 805	11 248	6 053	7 784	26 291	65 925	7 709	18 149	25 742	20 411	45 584	111 095
2000	1 614	15 159	16 721	10 554	5 734	6 947	26 492	66 045	7 461	18 232	25 492	21 484	46 522	112 070
2001	1 652	14 150	15 756	11 302	5 788	7 098	26 301	65 984	7 056	19 032	25 664	23 451	48 817	114 061
2002	1 870	15 421	17 242	12 780	7 324	5 631	27 170	70 042	6 695	20 610	26 527	24 999	51 283	120 602
2003	2 128	19 251	21 314	12 047	9 190	5 946	26 182	74 256	7 569	20 135	27 244	25 697	52 696	126 402
2004	2 556	23 391	25 867	10 513	10 319	6 124	28 875	81 288	8 304	19 561	27 637	24 562	51 808	133 118
2005	2 404	24 074	26 392	10 084	9 286	6 002	27 621	78 938	8 252	17 817	25 970	25 190	50 976	129 877
2006	2 833	24 148	26 903	9 296	8 529	6 508	29 979	80 992	7 897	16 710	24 532	25 250	49 704	130 882
2007	3 272	23 754	26 959	9 168	8 386	6 352	32 997	83 845	7 482	16 292	23 682	25 840	49 502	133 707
2008	2 957	18 433	21 345	10 190	9 328	4 916	33 386	79 375	7 701	16 474	24 093	26 699	50 781	130 210
2009	3 017	12 667	15 671	11 673	11 289	3 450	25 011	67 215	7 490	14 402	21 857	24 104	45 953	113 028
2010	4 720	15 377	20 097	14 865	14 886	3 825	24 486	78 159	8 136	15 766	23 901	20 605	44 507	122 666
2011	4 823	16 768	21 592	16 107	13 761	3 464	25 082	80 005	7 476	15 892	23 368	21 991	45 359	125 365
2012	4 037	16 363	20 400	14 403	10 873	3 794	22 614	72 084	7 639	15 107	22 746	21 902	44 648	116 732
2013	4 303	17 902	22 206	14 728	9 830	3 445	22 621	72 829	7 325	15 456	22 782	22 818	45 600	118 429
2014	5 623	22 127	27 750	14 196	9 722	3 931	23 995	79 594	7 441	16 724	24 165	24 313	48 478	128 072
2015	4 603	24 053	28 656	19 580	9 535	4 310	24 305	86 386	7 479	17 064	24 543	23 457	48 000	134 385

Users of these data should note that there may be instances where the period on period growths for the same component differ between tables. This is due to the growth rates being calculated at a higher precision than 1 dp within the production system. This accuracy is truncated when transferred into the published tables.

2B.A CONSTRUCTION OUTPUT: VOLUME NON-SEASONALLY ADJUSTED BY SECTOR

£ million

	New Housing			Other New Work				Repair and Maintenance					All Repair and Maintenance	All Work
	Public housing	Private housing	Total new housing	Infra-structure	Excluding Infrastructure			All new work	Housing			Non housing R&M		
					Public	Private industrial	Private commercial		Public housing	Private housing	Total housing			
	MV4B	MV4C	MVLR	MV4D	MV4E	MV4F	MV4G	MV4H	MV4I	MV4J	MV4K	MV4L	MV4M	MV4N
1997	1 830	15 176	17 006	11 798	5 028	7 293	21 188	62 312	8 610	18 140	26 750	19 307	46 056	108 369
1998	1 480	15 316	16 796	11 464	5 294	7 424	22 951	63 928	8 039	18 509	26 548	19 508	46 056	109 984
1999	1 288	13 840	15 128	11 193	5 987	7 693	25 811	65 812	7 743	18 360	26 104	19 484	45 587	111 400
2000	1 614	15 423	17 037	10 476	5 657	6 851	25 941	65 962	7 476	18 399	25 875	20 455	46 330	112 292
2001	1 651	14 397	16 048	11 211	5 708	6 998	25 746	65 711	7 068	19 199	26 266	22 325	48 592	114 303
2002	1 868	15 677	17 545	12 675	7 215	5 545	26 583	69 564	6 704	20 781	27 485	23 788	51 273	120 836
2003	2 130	19 590	21 720	11 955	9 065	5 863	25 640	74 244	7 584	20 319	27 903	24 473	52 376	126 620
2004	2 567	23 892	26 460	10 475	10 219	6 061	28 381	81 595	8 349	19 812	28 161	23 474	51 635	133 230
2005	2 418	24 630	27 048	10 064	9 208	5 953	27 197	79 471	8 311	18 079	26 390	24 118	50 508	129 979
2006	2 862	24 811	27 673	9 317	8 497	6 481	29 643	81 612	7 988	17 030	25 018	24 278	49 296	130 907
2007	3 314	24 496	27 810	9 221	8 384	6 350	32 743	84 508	7 597	16 661	24 259	24 935	49 194	133 701
2008	2 998	19 040	22 038	10 266	9 340	4 920	33 183	79 746	7 831	16 875	24 707	25 805	50 512	130 258
2009	3 059	13 074	16 134	11 753	11 297	3 451	24 845	67 480	7 610	14 741	22 351	23 283	45 634	113 113
2010	4 720	15 377	20 097	14 865	14 886	3 825	24 486	78 159	8 136	15 766	23 901	20 605	44 507	122 666
2011	4 823	16 768	21 592	16 107	13 761	3 464	25 082	80 005	7 476	15 892	23 368	21 991	45 359	125 365
2012	4 037	16 363	20 400	14 403	10 873	3 794	22 614	72 084	7 639	15 107	22 746	21 902	44 648	116 732
2013	4 303	17 902	22 206	14 728	9 830	3 445	22 621	72 829	7 325	15 456	22 782	22 818	45 600	118 429
2014	5 603	22 140	27 743	14 178	9 665	3 965	23 853	79 404	7 447	16 764	24 210	24 319	48 529	127 933
2015	4 627	24 069	28 696	18 494	9 582	4 384	24 221	85 377	7 502	17 116	24 618	23 506	48 124	133 501

Users of these data should note that there may be instances where the period on period growths for the same component differ between tables. This is due to the growth rates being calculated at a higher precision than 1 dp within the production system. This accuracy is truncated when transferred into the published tables.

3A.A CONSTRUCTION OUTPUT: VOLUME SEASONALLY ADJUSTED PERCENTAGE CHANGE ON SAME PERIOD A YEAR EARLIER

Index 2013 = 100

	New Housing			Other New Work					Repair and Maintenance				All Repair and Maintena- nce	All Work
	Public housing	Private housing	Total housing	Infra- structure	Excluding Infrastructure			All new work	Housing			Non housing R&M		
					Public	Private industri- al	Private commerci- al		Public housing	Private housing	Total housing			
					MV5H	MV5I	MVM3		MV5J	MV5K	MV5L			
1998	-19.0	1.0	-1.2	-2.8	5.4	1.9	8.4	2.6	-6.6	2.1	-1.5	1.1	-0.2	1.5
1999	-13.3	-10.0	-10.3	-2.8	12.6	3.2	12.0	3.0	-4.1	-1.2	-2.4	-0.6	-1.5	1.3
2000	25.5	11.7	12.9	-6.2	-5.3	-10.7	0.8	0.2	-3.2	0.5	-1.0	5.3	2.1	0.9
2001	2.3	-6.7	-5.8	7.1	0.9	2.2	-0.7	-0.1	-5.4	4.4	0.7	9.2	4.9	1.8
2002	13.2	9.0	9.4	13.1	26.5	-20.7	3.3	6.1	-5.1	8.3	3.4	6.6	5.1	5.7
2003	13.8	24.8	23.6	-5.7	25.5	5.6	-3.6	6.0	13.1	-2.3	2.7	2.8	2.8	4.8
2004	20.1	21.5	21.4	-12.7	12.3	3.0	10.3	9.5	9.7	-2.9	1.4	-4.4	-1.7	5.3
2005	-5.9	2.9	2.0	-4.1	-10.0	-2.0	-4.3	-2.9	-0.6	-8.9	-6.0	2.6	-1.6	-2.4
2006	17.9	0.3	1.9	-7.8	-8.1	8.4	8.5	2.6	-4.3	-6.2	-5.5	0.2	-2.5	0.8
2007	15.5	-1.6	0.2	-1.4	-1.7	-2.4	10.1	3.5	-5.3	-2.5	-3.5	2.3	-0.4	2.2
2008	-9.6	-22.4	-20.8	11.2	11.2	-22.6	1.2	-5.3	2.9	1.1	1.7	3.3	2.6	-2.6
2009	2.0	-31.3	-26.6	14.5	21.0	-29.8	-25.1	-15.3	-2.7	-12.6	-9.3	-9.7	-9.5	-13.2
2010	56.5	21.4	28.2	27.3	31.9	10.9	-2.1	16.3	8.6	9.5	9.4	-14.5	-3.1	8.5
2011	2.2	9.0	7.4	8.4	-7.6	-9.5	2.4	2.4	-8.1	0.8	-2.2	6.7	1.9	2.2
2012	-16.3	-2.4	-5.5	-10.6	-21.0	9.5	-9.8	-9.9	2.2	-4.9	-2.7	-0.4	-1.6	-6.9
2013	6.6	9.4	8.9	2.3	-9.6	-9.2	-	1.0	-4.1	2.3	0.2	4.2	2.1	1.5
2014	30.7	23.6	25.0	-3.6	-1.1	14.1	6.1	9.3	1.6	8.2	6.1	6.6	6.3	8.1
2015	-18.1	8.7	3.3	37.9	-1.9	9.6	1.3	8.5	0.5	2.0	1.6	-3.5	-1.0	4.9

Users of these data should note that there may be instances where the period on period growths for the same component differ between tables. This is due to the growth rates being calculated at a higher precision than 1 dp within the production system. This accuracy is truncated when transferred into the published tables.

3A.Q CONSTRUCTION OUTPUT: VOLUME SEASONALLY ADJUSTED PERCENTAGE CHANGE ON PREVIOUS QUARTER

2013 = 100

	New Housing				Other New Work				Repair and Maintenance					All Repair and Maintena- nce	All Work
	Public housing	Private housing	Total new housing	Infra- structure	Excluding Infrastructure			All new work	Housing			Non housing R&M			
					Public	Private industri- al	Private commerci- al		Public housing	Private housing	Total housing				
	MV54	MV55	MVM7	MV56	MV57	MV58	MV59	MV5A	MV5B	MV5C	MV5D	MV5E	MV5F	MV5G	
2001 Q4	8.4	-0.1	0.8	-3.3	6.6	-10.9	5.0	1.0	2.8	0.4	1.3	5.8	3.6	2.0	
2002 Q1	3.4	0.5	0.9	11.0	4.5	-12.6	-0.7	1.2	-3.8	1.4	-0.5	1.9	0.8	1.0	
Q2	-2.3	-0.5	-0.7	2.1	7.5	-6.1	0.1	0.6	-2.2	6.4	3.3	-1.4	0.8	0.7	
Q3	5.5	8.7	8.3	6.4	7.7	5.9	1.5	5.0	-1.4	3.0	1.5	0.8	1.1	3.5	
Q4	-1.2	6.3	5.5	-6.4	4.1	-0.9	-	0.4	3.8	5.4	4.9	2.5	3.6	1.6	
2003 Q1	4.3	4.8	4.8	-0.4	3.8	1.2	-5.4	-0.5	-1.6	-14.8	-10.6	-0.1	-5.1	-2.2	
Q2	4.1	3.1	3.2	-1.9	6.8	-0.1	-1.2	0.8	11.3	11.0	11.2	1.6	5.9	2.7	
Q3	5.3	8.6	8.3	-4.5	7.4	4.0	1.4	3.1	10.1	-1.8	2.4	1.0	1.6	2.6	
Q4	7.3	9.5	9.3	-1.7	7.8	6.9	4.8	5.6	-3.2	-0.8	-1.7	-2.6	-2.2	2.7	
2004 Q1	9.3	6.2	6.5	-5.2	3.6	1.2	5.1	3.6	7.1	1.6	3.5	2.0	2.7	3.3	
Q2	2.6	1.6	1.7	-1.5	-0.8	-4.0	2.3	0.8	-3.2	-7.3	-5.9	-6.7	-6.3	-1.8	
Q3	-1.2	1.5	1.3	-3.4	-2.2	-2.5	-0.5	-0.7	-1.7	2.5	0.9	-2.0	-0.6	-0.6	
Q4	-2.6	0.5	0.2	-5.0	-2.9	-3.1	-2.3	-2.0	3.6	-4.2	-1.4	2.9	0.8	-1.0	
2005 Q1	-4.0	0.6	0.2	2.1	-1.8	-1.7	-1.6	-0.7	4.4	-2.3	0.1	6.0	3.1	0.7	
Q2	-1.9	2.6	2.2	-2.5	-3.1	3.9	-0.7	-	-0.6	-3.0	-2.1	-2.0	-2.1	-0.7	
Q3	-2.1	-1.6	-1.6	1.9	-4.8	1.9	-2.1	-1.5	-10.1	-0.8	-4.3	-1.5	-2.8	-2.0	
Q4	9.9	-1.4	-0.4	3.0	-2.0	2.2	0.9	0.5	-1.5	-1.5	-1.5	-1.7	-1.6	-0.2	
2006 Q1	5.0	-0.5	0.1	-3.5	-0.8	4.8	4.2	1.5	0.3	-0.1	0.1	0.3	0.2	1.0	
Q2	4.9	1.4	1.7	-7.2	-2.5	-1.4	2.2	0.2	-0.8	-1.6	-1.4	4.3	1.7	0.7	
Q3	4.1	1.5	1.8	-2.9	-1.5	0.3	4.2	1.8	6.5	-4.9	-1.0	-3.4	-2.3	0.3	
Q4	1.5	0.9	1.0	-0.3	-0.9	2.9	3.9	2.0	-2.0	-1.1	-1.5	4.2	1.6	1.8	
2007 Q1	10.5	-	1.1	-1.4	-0.4	1.3	1.9	1.1	-0.4	2.4	1.4	1.8	1.6	1.2	
Q2	2.1	-2.0	-1.5	1.8	0.2	-0.7	2.1	0.5	-7.3	0.9	-2.0	-2.6	-2.4	-0.5	
Q3	-2.0	-2.1	-2.1	2.9	1.0	-6.4	-0.3	-0.9	-3.6	-4.7	-4.4	-1.0	-2.6	-1.5	
Q4	-1.5	-3.3	-3.1	3.4	0.4	-7.5	3.6	0.4	4.3	2.8	3.3	2.4	2.8	1.2	
2008 Q1	-4.2	-5.0	-4.9	4.0	5.6	-1.5	2.8	0.7	0.4	-0.3	-0.1	3.6	1.9	1.1	
Q2	-1.4	-9.3	-8.3	3.9	2.6	-10.7	-3.5	-3.8	6.6	2.8	4.1	4.1	4.1	-1.1	
Q3	-2.5	-11.3	-10.1	2.5	4.4	-7.1	0.1	-2.3	-2.2	-4.2	-3.5	-4.1	-3.8	-2.8	
Q4	-7.6	-13.7	-12.8	-6.9	0.5	-11.5	-7.9	-8.2	-2.5	6.7	3.5	-6.8	-2.1	-5.9	
2009 Q1	-6.5	-11.9	-11.1	2.1	1.2	-13.9	-9.4	-7.1	-6.7	-13.3	-11.1	-3.3	-7.1	-7.1	
Q2	4.7	-3.9	-2.5	9.0	8.7	-6.8	-6.1	-1.0	4.3	-3.8	-1.0	-2.5	-1.8	-1.3	
Q3	17.6	-5.1	-1.0	6.9	11.6	-1.4	-10.5	-1.5	7.2	6.8	6.9	7.6	7.3	1.8	
Q4	16.4	4.8	7.3	18.2	9.8	6.9	-8.5	3.8	-4.2	-11.7	-9.0	-8.5	-8.7	-1.2	
2010 Q1	18.8	8.9	11.1	9.0	11.3	3.1	9.1	9.7	5.8	7.4	6.9	-15.5	-4.9	4.0	
Q2	4.1	10.0	8.6	4.7	4.9	2.4	2.8	4.9	4.8	8.3	7.1	7.3	7.2	5.7	
Q3	11.0	7.6	8.4	-5.4	-3.1	17.0	5.8	3.0	-3.2	6.7	3.2	-2.0	0.8	2.2	
Q4	-2.1	-0.5	-0.9	-9.9	3.6	-18.7	-5.3	-4.1	-2.1	-1.6	-1.8	2.2	-	-2.6	
2011 Q1	4.3	2.0	2.5	13.7	1.1	-3.7	-1.2	2.7	-4.8	-3.4	-3.9	2.8	-0.8	1.4	
Q2	-4.5	0.9	-0.4	10.0	-8.5	3.4	4.2	1.6	0.7	-0.7	-0.3	-0.3	-0.3	0.9	
Q3	-4.1	2.4	0.9	-4.7	-6.7	-2.8	1.8	-1.5	-4.1	-0.3	-1.6	2.8	0.6	-0.8	
Q4	-4.3	-2.3	-2.7	0.3	-5.5	0.6	1.2	-1.2	0.6	4.6	3.4	0.9	2.2	-	
2012 Q1	-3.8	4.1	2.4	-9.9	-4.2	7.5	-8.7	-4.6	0.2	-3.0	-2.0	-1.1	-1.6	-3.5	
Q2	-11.5	-8.1	-8.8	-6.9	-8.0	0.2	-0.4	-5.2	3.2	-4.4	-2.0	-0.6	-1.3	-3.8	
Q3	4.5	-1.6	-0.4	7.9	-3.7	-0.4	-7.9	-1.8	2.3	-1.8	-0.5	-2.2	-1.3	-1.6	
Q4	-1.6	4.1	2.9	2.6	-4.2	8.5	1.5	1.7	-0.2	-3.0	-2.1	1.1	-0.5	0.8	
2013 Q1	-0.8	-0.6	-0.6	-2.7	-3.1	-7.2	1.1	-1.3	-3.5	3.2	0.9	1.0	1.0	-0.4	
Q2	4.9	8.7	7.9	-0.4	1.5	-9.2	-0.4	1.8	-2.5	2.4	0.7	2.6	1.7	1.7	
Q3	6.0	3.5	3.9	0.2	1.8	-1.0	6.3	3.4	-1.8	3.1	1.5	2.3	1.9	2.8	
Q4	10.8	5.9	6.8	4.9	-6.1	-2.4	-2.5	1.3	1.9	0.8	1.1	1.6	1.4	1.3	
2014 Q1	9.1	7.1	7.5	-7.7	-0.5	11.8	4.0	2.5	1.6	5.8	4.5	0.1	2.3	2.4	
Q2	6.4	3.4	4.0	-3.8	2.7	10.8	0.6	1.7	0.5	-1.2	-0.7	4.4	1.8	1.7	
Q3	6.1	7.3	7.0	4.1	1.7	-	0.2	3.4	0.2	2.4	1.7	0.8	1.2	2.6	
Q4	-4.5	1.2	-	6.8	0.3	-3.5	1.6	1.5	-1.4	-2.6	-2.3	-1.3	-1.8	0.3	
2015 Q1	-7.7	1.2	-0.6	28.7	-4.8	8.2	-1.0	4.6	1.8	-0.7	0.1	-1.1	-0.5	2.7	
Q2	-5.9	2.7	1.2	3.4	1.1	-1.5	1.1	1.5	-0.2	4.7	3.2	-5.0	-1.0	0.6	
Q3	-15.5	-2.4	-4.6	-1.0	0.3	9.6	-1.8	-1.8	0.6	0.7	0.7	0.7	0.7	-0.9	
Q4	-2.0	5.0	4.0	-4.0	0.9	-7.5	3.8	1.1	-2.5	0.2	-0.6	2.1	0.7	1.0	
2016 Q1	4.2	6.8	6.4	-1.1	0.8	-10.2	2.7	2.2	-0.2	-	-	-2.0	-1.0	1.1	
Q2	-2.7	0.7	0.2	-6.1	3.6	7.4	2.4	0.2	-2.6	0.2	-0.6	2.6	1.0	0.5	
Q3	3.3	0.8	1.2	-0.3	-1.5	-3.6	0.4	0.1	-7.8	0.3	-2.1	-3.1	-2.6	-0.8	

Users of these data should note that there may be instances where the period on period growths for the same component differ between tables. This is due to the growth rates being calculated at a higher precision than 1 dp within the production system. This accuracy is truncated when transferred into the published tables.

3A.M CONSTRUCTION OUTPUT: VOLUME SEASONALLY ADJUSTED PERCENTAGE CHANGE ON PREVIOUS MONTH

Index 2013 = 100

	New Housing				Other New Work			Repair and Maintenance						All Repair and Maintena- nce	All Work
	Public housing	Private housing	Total new housing	Infra- struc- ture	Excluding Infrastructure			Housing							
					Public	Private industri- al	Private commerci- al	All new work	Public housing	Private housing	Total housing	Non housing R&M			
MV4O	MV4P	MVM2	MV4Q	MV4R	MV4S	MV4T	MV4U	MV4V	MV4X	MV4Y	MV4Z	MV52	MV53		
2011 Feb	-0.4	1.0	0.7	2.6	0.2	-5.5	-2.5	-0.3	11.7	-2.9	1.6	-1.3	0.2	-0.1	
Mar	3.1	2.6	2.7	1.5	-4.3	-0.1	3.0	1.1	1.4	1.2	1.3	3.5	2.4	1.5	
Apr	-6.0	-4.9	-5.1	6.1	-4.0	3.7	2.4	-0.1	-3.0	1.5	-	-1.4	-0.7	-0.3	
May	2.1	3.2	2.9	3.2	-2.7	0.4	-0.7	0.7	-2.5	-4.0	-3.5	-0.5	-2.1	-0.3	
Jun	-5.2	5.3	2.8	-0.7	-0.3	4.3	3.3	1.8	2.6	1.8	2.0	-1.0	0.6	1.3	
Jul	-5.2	0.1	-1.0	-0.3	-1.6	-7.2	0.1	-0.9	-3.7	-0.3	-1.4	4.4	1.4	-0.1	
Aug	1.5	-2.1	-1.4	-7.8	-5.7	0.9	-1.5	-3.4	-1.1	-0.4	-0.6	-0.9	-0.7	-2.4	
Sep	9.2	-2.3	0.1	0.7	-1.1	3.7	2.1	0.8	-1.8	1.5	0.4	-0.2	0.1	0.6	
Oct	-9.8	-1.8	-3.7	-5.5	-7.0	2.7	-0.8	-3.3	1.3	4.0	3.1	-1.5	0.9	-1.8	
Nov	1.9	2.0	2.0	6.9	1.1	-3.0	0.5	2.1	0.4	-0.3	-0.1	1.4	0.6	1.6	
Dec	-4.3	1.3	0.1	11.0	11.1	-8.3	2.1	4.3	2.1	-0.1	0.6	5.7	3.1	3.8	
2012 Jan	8.4	1.2	2.7	-12.0	-6.6	10.5	-8.5	-5.3	-2.3	-4.9	-4.1	-7.8	-5.9	-5.5	
Feb	-11.7	-0.3	-2.8	-8.2	-5.7	3.7	-5.4	-4.9	1.6	2.9	2.5	3.8	3.1	-2.0	
Mar	-4.7	4.3	2.6	-2.8	-2.5	5.1	5.8	1.8	-0.2	0.6	0.3	1.0	0.7	1.4	
Apr	3.1	-10.5	-8.0	0.4	-0.5	-1.1	-1.7	-2.9	0.8	-4.7	-3.0	-3.1	-3.0	-3.0	
May	-7.0	1.2	-0.5	-4.8	-1.7	-3.0	1.7	-0.9	5.0	2.9	3.6	2.0	2.8	0.5	
Jun	-8.4	-2.6	-3.8	1.4	-8.9	-3.5	-5.1	-4.0	-4.0	-8.6	-7.1	-2.0	-4.6	-4.3	
Jul	17.9	-1.0	2.5	-	3.3	5.6	-5.2	-0.2	3.5	10.5	8.1	0.4	4.3	1.5	
Aug	-6.0	-2.3	-3.1	15.4	0.4	-5.3	1.0	2.2	-0.9	-7.7	-5.5	-3.6	-4.6	-0.5	
Sep	1.5	7.1	6.0	-3.8	-0.9	3.9	-1.8	0.3	1.6	-4.5	-2.4	1.6	-0.4	-	
Oct	-2.5	-0.1	-0.6	1.0	-1.0	6.1	1.7	0.7	-0.4	1.2	0.6	-0.6	-	0.5	
Nov	0.6	1.9	1.6	1.7	-1.8	1.3	-0.3	0.5	0.7	1.8	1.4	5.3	3.3	1.6	
Dec	5.0	-2.7	-1.2	-4.5	-4.8	2.2	2.8	-1.0	-3.0	1.2	-0.3	-4.5	-2.4	-1.6	
2013 Jan	-5.0	-3.0	-3.4	-4.0	-2.6	-7.6	0.4	-2.5	-3.5	1.2	-0.4	0.8	0.2	-1.5	
Feb	1.7	6.9	5.8	4.6	5.0	1.6	-1.7	2.8	3.9	0.7	1.8	3.2	2.5	2.7	
Mar	-0.8	-2.3	-2.0	2.5	0.1	-7.1	0.5	-0.3	-2.3	0.4	-0.5	-1.2	-0.9	-0.5	
Apr	2.1	6.5	5.6	-5.0	-1.9	-2.3	-0.5	-	1.8	-0.8	0.1	0.8	0.4	0.2	
May	3.2	-0.9	-0.2	-0.3	3.7	-2.2	1.1	0.6	-5.2	3.1	0.3	1.5	0.9	0.7	
Jun	1.8	6.1	5.3	5.6	-2.0	-4.1	-1.0	1.9	-1.7	1.9	0.7	1.7	1.2	1.6	
Jul	2.7	-2.0	-1.2	-2.8	0.7	-0.1	3.6	0.3	-3.2	-0.3	-1.2	-1.2	-1.2	-0.3	
Aug	0.6	3.0	2.5	2.3	-0.5	10.8	2.5	2.4	7.9	1.6	3.6	4.3	3.9	3.0	
Sep	1.5	-0.4	-	-6.1	4.5	-11.9	3.6	-0.1	-2.4	0.2	-0.6	-2.7	-1.7	-0.7	
Oct	9.3	3.8	4.8	11.2	-8.9	-0.8	-3.6	1.2	2.1	0.5	1.0	3.4	2.2	1.5	
Nov	1.2	-0.4	-	-3.1	0.4	3.9	-3.7	-1.6	-2.2	1.2	0.1	-2.3	-1.1	-1.4	
Dec	-2.0	4.6	3.2	-0.7	0.3	3.2	1.2	1.4	1.2	-3.3	-1.9	0.9	-0.5	0.7	
2014 Jan	6.4	7.8	7.5	-4.8	0.4	1.8	2.3	2.3	6.0	6.4	6.2	0.6	3.4	2.7	
Feb	3.7	-6.9	-4.9	-0.4	-2.9	6.6	0.7	-1.6	-6.2	2.6	-0.2	-0.8	-0.5	-1.2	
Mar	3.1	3.8	3.7	-4.1	2.3	5.3	5.0	2.5	-0.1	-1.1	-0.8	0.8	-	1.5	
Apr	-5.6	2.1	0.5	-1.0	5.6	2.0	-1.4	0.3	4.1	0.8	1.8	3.9	2.8	1.3	
May	12.3	1.2	3.4	2.7	-5.7	4.1	-1.8	0.5	-2.6	-2.4	-2.5	-0.8	-1.6	-0.3	
Jun	2.4	1.2	1.5	-5.1	1.6	0.1	-0.9	-0.5	1.6	-1.3	-0.4	2.4	1.0	0.1	
Jul	-1.0	5.7	4.3	6.1	1.0	-3.2	1.6	3.0	-0.1	2.4	1.6	-2.1	-0.3	1.7	
Aug	2.9	-	0.6	-0.8	3.4	2.6	-1.3	0.2	0.9	4.8	3.6	2.3	2.9	1.2	
Sep	-1.0	1.0	0.6	4.0	-1.8	0.2	2.2	1.3	-1.3	-4.4	-3.5	0.2	-1.6	0.2	
Oct	-3.0	-0.7	-1.2	0.4	0.8	-4.0	-2.8	-1.3	-2.1	-0.3	-0.9	-2.4	-1.6	-1.4	
Nov	-3.2	3.0	1.8	4.9	-0.1	-3.8	3.7	2.4	3.7	-1.0	0.4	1.5	1.0	1.9	
Dec	0.9	-2.3	-1.7	2.0	-0.9	6.3	2.9	0.8	-3.3	-0.7	-1.5	-2.3	-1.9	-0.2	
2015 Jan	-7.8	4.2	1.8	23.0	-5.0	9.9	-3.0	3.9	2.8	-0.2	0.7	0.1	0.4	2.6	
Feb	2.5	-4.7	-3.4	-0.1	2.4	-4.0	0.1	-1.1	-1.6	-2.0	-1.9	-3.3	-2.6	-1.6	
Mar	-3.4	2.6	1.5	5.3	-2.3	-4.9	-3.2	0.3	3.7	5.0	4.6	6.3	5.4	2.1	
Apr	3.5	2.8	3.0	3.0	0.7	4.8	1.0	2.3	-4.5	1.3	-0.5	-7.0	-3.8	0.1	
May	-10.6	1.2	-0.9	-3.2	-	-3.3	1.6	-0.8	3.7	-	1.1	-0.5	0.3	-0.4	
Jun	-2.2	-3.0	-2.8	-2.4	3.7	2.5	3.5	-	0.3	2.0	1.5	-1.3	0.1	-	
Jul	-6.2	-0.8	-1.7	4.3	-1.6	13.3	-3.2	-	-1.3	-0.5	-0.7	4.0	1.5	0.5	
Aug	-8.7	-0.4	-1.7	-2.1	-1.3	-5.6	-0.3	-1.6	-0.3	-1.1	-0.9	-5.1	-2.9	-2.0	
Sep	3.2	0.6	1.0	-3.2	1.3	-0.2	-3.6	-1.3	2.1	1.9	2.0	4.0	2.9	0.2	
Oct	-2.0	2.2	1.6	-0.1	-2.1	-2.1	6.5	1.9	-3.0	0.7	-0.4	0.2	-0.1	1.2	
Nov	-2.1	-0.2	-0.5	-6.2	2.9	-1.4	-0.4	-1.4	-2.5	-0.9	-1.3	1.0	-0.2	-1.0	
Dec	7.7	7.9	7.9	10.1	2.0	-7.9	0.8	4.8	2.6	-2.5	-1.0	1.0	-	3.0	
2016 Jan	2.0	-1.0	-0.6	-3.7	2.2	0.6	3.4	0.2	-1.7	3.3	1.8	-1.7	0.1	0.2	
Feb	-5.5	4.5	3.0	-0.6	-2.4	-13.1	0.6	0.2	1.5	-2.3	-1.2	0.9	-0.2	0.1	
Mar	5.5	-0.9	-0.1	-3.4	-6.0	12.3	-4.5	-2.2	-1.0	0.8	0.3	-5.5	-2.5	-2.3	
Apr	-8.8	1.4	-	-2.1	10.4	7.2	5.2	2.5	0.2	1.2	0.9	7.9	4.2	3.1	
May	5.3	-2.4	-1.4	0.5	-0.3	-3.5	-	-0.6	-3.5	-1.6	-2.1	-2.3	-2.2	-1.2	
Jun	4.1	0.2	0.7	-6.0	-3.4	-0.8	0.4	-1.3	-1.2	1.0	0.3	0.2	0.3	-0.7	
Jul	-1.4	1.5	1.1	5.5	2.9	-1.7	-1.1	1.4	-3.1	0.1	-0.9	-1.7	-1.3	0.4	
Aug	-0.9	-	-0.1	-4.3	-2.7	-2.7	1.2	-1.0	-6.5	0.1	-1.7	-0.6	-1.2	-1.1	
Sep	2.8	0.2	0.5	3.7	-0.4	4.8	1.2	1.4	4.5	-	1.2	-1.4	-0.1	0.9	
Oct	-2.0	0.3	-	-1.4	-4.8	1.2	-1.4	-1.2	-1.4	-1.5	-1.5	2.5	0.5	-0.6	
Nov	5.5	0.6	1.2	1.2	6.0	-6.0	-2.6	0.3	-2.3	2.3	1.0	-3.3	-1.1	-0.2	

Users of these data should note that there may be instances where the period on period growths for the same component differ between tables. This is due to the growth rates being calculated at a higher precision than 1 dp within the production system. This accuracy is truncated when transferred into the published tables.

3B.A CONSTRUCTION OUTPUT: VOLUME SEASONALLY ADJUSTED PERCENTAGE CHANGE ON SAME PERIOD A YEAR EARLIER BY SECTOR

Index 2013 = 100

	New Housing			Other New Work				Repair and Maintenance					All Repair and Maintena- nce	All Work
	Public housing	Private housing	Total new housing	Infra- structure	Excluding Infrastructure			All new work	Housing			Non housing R&M		
					Public	Private industri- al	Private commerci- al		Public housing	Private housing	Total housing			
	MV5H	MV5I	MVM3	MV5J	MV5K	MV5L	MV5M	MV5N	MV5O	MV5P	MV5Q	MV5R	MV5S	MV5T
1998	-19.0	1.0	-1.2	-2.8	5.4	1.9	8.4	2.6	-6.6	2.1	-1.5	1.1	-0.2	1.5
1999	-13.3	-10.0	-10.3	-2.8	12.6	3.2	12.0	3.0	-4.1	-1.2	-2.4	-0.6	-1.5	1.3
2000	25.5	11.7	12.9	-6.2	-5.3	-10.7	0.8	0.2	-3.2	0.5	-1.0	5.3	2.1	0.9
2001	2.3	-6.7	-5.8	7.1	0.9	2.2	-0.7	-0.1	-5.4	4.4	0.7	9.2	4.9	1.8
2002	13.2	9.0	9.4	13.1	26.5	-20.7	3.3	6.1	-5.1	8.3	3.4	6.6	5.1	5.7
2003	13.8	24.8	23.6	-5.7	25.5	5.6	-3.6	6.0	13.1	-2.3	2.7	2.8	2.8	4.8
2004	20.1	21.5	21.4	-12.7	12.3	3.0	10.3	9.5	9.7	-2.9	1.4	-4.4	-1.7	5.3
2005	-5.9	2.9	2.0	-4.1	-10.0	-2.0	-4.3	-2.9	-0.6	-8.9	-6.0	2.6	-1.6	-2.4
2006	17.9	0.3	1.9	-7.8	-8.1	8.4	8.5	2.6	-4.3	-6.2	-5.5	0.2	-2.5	0.8
2007	15.5	-1.6	0.2	-1.4	-1.7	-2.4	10.1	3.5	-5.3	-2.5	-3.5	2.3	-0.4	2.2
2008	-9.6	-22.4	-20.8	11.2	11.2	-22.6	1.2	-5.3	2.9	1.1	1.7	3.3	2.6	-2.6
2009	2.0	-31.3	-26.6	14.5	21.0	-29.8	-25.1	-15.3	-2.7	-12.6	-9.3	-9.7	-9.5	-13.2
2010	56.5	21.4	28.2	27.3	31.9	10.9	-2.1	16.3	8.6	9.5	9.4	-14.5	-3.1	8.5
2011	2.2	9.0	7.4	8.4	-7.6	-9.5	2.4	2.4	-8.1	0.8	-2.2	6.7	1.9	2.2
2012	-16.3	-2.4	-5.5	-10.6	-21.0	9.5	-9.8	-9.9	2.2	-4.9	-2.7	-0.4	-1.6	-6.9
2013	6.6	9.4	8.9	2.3	-9.6	-9.2	-	1.0	-4.1	2.3	0.2	4.2	2.1	1.5
2014	30.7	23.6	25.0	-3.6	-1.1	14.1	6.1	9.3	1.6	8.2	6.1	6.6	6.3	8.1
2015	-18.1	8.7	3.3	37.9	-1.9	9.6	1.3	8.5	0.5	2.0	1.6	-3.5	-1.0	4.9

Users of these data should note that there may be instances where the period on period growths for the same component differ between tables. This is due to the growth rates being calculated at a higher precision than 1 dp within the production system. This accuracy is truncated when transferred into the published tables.

3B.Q CONSTRUCTION OUTPUT: VOLUME SEASONALLY ADJUSTED PERCENTAGE CHANGE ON SAME PERIOD A YEAR EARLIER

Index 2013 = 100

	New Housing				Other New Work				Repair and Maintenance					All Repair and Maintenance	All Work
	Public housing	Private housing	Total new housing	Infrast- ructure	Excluding Infrastructure			All new work	Housing			Non housing R&M			
					Public	Private industri- al	Private commer- cial		Public housing	Private housing	Total housing				
	MV68	MV69	MVM8	MV6A	MV6B	MV6C	MV6D	MV6E	MV6F	MV6G	MV6H	MV6I	MV6J	MV6K	
2001 Q4	5.0	-2.0	-1.3	4.1	13.8	-6.1	3.2	2.3	2.6	5.7	4.5	7.7	6.2	3.8	
2002 Q1	30.1	7.9	10.1	13.7	26.9	-18.3	1.7	5.7	-4.4	-1.0	-2.2	10.7	4.3	5.2	
Q2	4.9	3.5	3.7	9.4	24.1	-27.1	4.7	3.7	-7.7	5.7	0.8	5.0	3.0	3.4	
Q3	15.7	8.6	9.4	16.5	29.1	-22.5	6.0	7.9	-4.6	11.6	5.7	7.2	6.5	7.4	
Q4	5.4	15.6	14.4	12.8	26.0	-13.9	1.0	7.2	-3.7	17.1	9.4	3.8	6.4	6.9	
2003 Q1	6.3	20.5	18.9	1.2	25.2	-0.3	-3.8	5.4	-1.4	-1.6	-1.7	1.7	0.2	3.5	
Q2	13.2	24.9	23.6	-2.7	24.3	6.1	-5.0	5.7	12.1	2.7	5.8	4.8	5.3	5.5	
Q3	12.9	24.8	23.5	-12.6	23.9	4.3	-5.2	3.8	25.2	-2.0	6.7	5.0	5.8	4.5	
Q4	22.7	28.5	27.9	-8.3	28.3	12.4	-0.6	9.2	16.8	-7.8	-	-0.2	-0.1	5.7	
2004 Q1	28.6	30.3	30.1	-12.7	28.0	12.4	10.4	13.7	27.1	9.9	15.8	1.9	8.2	11.7	
Q2	26.7	28.3	28.2	-12.4	18.9	8.0	14.3	13.7	10.6	-8.3	-2.0	-6.4	-4.3	6.8	
Q3	19.0	19.9	19.8	-11.4	8.3	1.2	12.2	9.5	-1.3	-4.3	-3.4	-9.1	-6.4	3.5	
Q4	8.0	10.1	9.9	-14.4	-2.4	-8.2	4.6	1.7	5.6	-7.6	-3.1	-3.9	-3.5	-0.2	
2005 Q1	-5.2	4.3	3.3	-7.7	-7.5	-10.8	-2.2	-2.5	3.0	-11.1	-6.3	-0.2	-3.1	-2.8	
Q2	-9.4	5.3	3.8	-8.6	-9.6	-3.5	-5.1	-3.3	5.8	-7.0	-2.6	4.8	1.2	-1.7	
Q3	-10.2	2.1	0.8	-3.6	-12.0	0.9	-6.6	-4.1	-3.3	-9.9	-7.6	5.3	-1.0	-3.0	
Q4	1.2	0.1	0.2	4.4	-11.2	6.4	-3.5	-1.6	-8.0	-7.4	-7.7	0.6	-3.4	-2.2	
2006 Q1	10.8	-1.0	0.1	-1.3	-10.3	13.5	2.2	0.5	-11.6	-5.4	-7.7	-4.8	-6.2	-1.9	
Q2	18.5	-2.1	-0.3	-6.1	-9.8	7.7	5.1	0.6	-11.9	-4.0	-6.9	1.3	-2.6	-0.5	
Q3	26.1	1.0	3.2	-10.4	-6.6	6.0	11.8	3.9	4.4	-8.0	-3.7	-0.6	-2.1	1.8	
Q4	16.5	3.4	4.7	-13.3	-5.6	6.7	15.2	5.5	3.8	-7.6	-3.7	5.3	1.1	3.9	
2007 Q1	22.5	3.9	5.8	-11.4	-5.3	3.1	12.7	5.1	3.0	-5.3	-2.4	7.0	2.5	4.2	
Q2	19.2	0.4	2.4	-2.8	-2.6	3.8	12.7	5.4	-3.7	-2.9	-3.1	-0.2	-1.6	3.0	
Q3	12.2	-3.2	-1.5	3.0	-	-3.2	7.8	2.7	-12.8	-2.7	-6.4	2.3	-1.8	1.1	
Q4	8.9	-7.3	-5.5	6.9	1.3	-13.0	7.5	1.1	-7.1	1.2	-1.9	0.5	-0.7	0.5	
2008 Q1	-5.6	-11.9	-11.2	12.7	7.4	-15.4	8.5	0.6	-6.3	-1.5	-3.3	2.2	-0.4	0.3	
Q2	-8.8	-18.5	-17.3	14.9	10.0	-23.9	2.4	-3.8	7.7	0.3	2.8	9.2	6.2	-0.4	
Q3	-9.3	-26.1	-24.0	14.4	13.7	-24.4	2.9	-5.1	9.3	0.9	3.7	5.8	4.8	-1.7	
Q4	-14.9	-34.0	-31.6	3.1	13.8	-27.6	-8.6	-13.1	2.1	4.8	3.9	-3.7	-0.1	-8.7	
2009 Q1	-16.9	-38.9	-36.1	1.2	9.1	-36.7	-19.4	-19.9	-5.1	-8.8	-7.6	-10.1	-9.0	-16.1	
Q2	-11.8	-35.3	-32.1	6.3	15.5	-34.0	-21.5	-17.5	-7.2	-14.7	-12.1	-15.7	-14.1	-16.2	
Q3	6.4	-30.7	-25.2	10.8	23.5	-29.9	-29.8	-16.8	1.6	-4.9	-2.7	-5.5	-4.2	-12.2	
Q4	34.0	-15.8	-7.9	40.7	34.9	-15.4	-30.3	-6.0	-0.2	-21.3	-14.4	-7.2	-10.7	-7.8	
2010 Q1	70.2	4.2	15.1	50.2	48.3	1.3	-16.1	11.0	13.3	-2.5	2.9	-18.9	-8.5	3.2	
Q2	69.4	19.3	28.2	44.2	43.1	11.3	-8.3	17.6	13.9	9.7	11.3	-10.8	-0.2	10.5	
Q3	59.9	35.2	40.4	27.6	24.3	32.0	8.4	23.0	2.9	9.7	7.5	-18.7	-6.2	11.0	
Q4	34.4	28.3	29.7	-2.8	17.3	0.4	12.2	13.7	5.2	22.2	16.0	-9.2	2.8	9.4	
2011 Q1	18.1	20.1	19.6	1.4	6.5	-6.2	1.6	6.5	-5.5	9.8	4.3	10.5	7.2	6.7	
Q2	8.3	10.1	9.7	6.5	-7.1	-5.3	3.1	3.1	-9.2	0.6	-2.8	2.7	-0.3	1.9	
Q3	-6.5	4.8	2.1	7.3	-10.6	-21.3	-0.8	-1.4	-10.1	-6.0	-7.3	7.7	-0.5	-1.1	
Q4	-8.6	2.9	0.2	19.5	-18.4	-2.6	6.0	1.6	-7.6	-	-2.5	6.4	1.6	1.6	
2012 Q1	-15.7	5.0	0.1	-5.3	-22.7	8.7	-2.0	-5.6	-2.7	0.4	-0.6	2.4	0.8	-3.3	
Q2	-21.9	-4.4	-8.3	-19.9	-22.3	5.3	-6.4	-12.0	-0.3	-3.3	-2.3	2.0	-0.3	-7.8	
Q3	-14.8	-8.1	-9.5	-9.3	-19.7	7.9	-15.3	-12.2	6.4	-4.8	-1.2	-3.0	-2.1	-8.6	
Q4	-12.4	-2.0	-4.3	-7.1	-18.7	16.4	-15.0	-9.7	5.5	-11.8	-6.4	-2.8	-4.6	-7.9	
2013 Q1	-9.7	-6.4	-7.1	0.3	-17.8	0.5	-5.9	-6.6	1.6	-6.1	-3.6	-0.7	-2.2	-4.9	
Q2	7.0	10.7	9.9	7.4	-9.2	-8.8	-5.9	0.4	-4.0	0.6	-0.9	2.5	0.8	0.5	
Q3	8.5	16.3	14.8	-0.3	-4.1	-9.4	8.6	5.6	-7.8	5.7	1.0	7.2	4.1	5.0	
Q4	22.1	18.3	19.1	1.9	-6.0	-18.5	4.3	5.3	-5.9	9.8	4.3	7.7	6.0	5.5	
2014 Q1	34.4	27.5	28.8	-3.4	-3.5	-1.8	7.3	9.3	-0.9	12.5	8.0	6.8	7.4	8.6	
Q2	36.3	21.4	24.2	-6.8	-2.4	19.8	8.4	9.2	2.1	8.6	6.5	8.6	7.6	8.5	
Q3	36.4	25.8	27.9	-3.1	-2.5	20.9	2.2	9.2	4.3	7.8	6.7	7.0	6.8	8.3	
Q4	17.7	20.2	19.7	-1.3	4.2	19.5	6.6	9.5	0.9	4.1	3.1	3.9	3.5	7.2	
2015 Q1	-0.5	13.6	10.7	37.6	-0.3	15.6	1.4	11.7	1.1	-2.2	-1.2	2.7	0.7	7.5	
Q2	-12.0	12.8	7.7	48.0	-1.8	2.8	1.9	11.5	0.4	3.6	2.6	-6.5	-2.0	6.3	
Q3	-30.0	2.6	-4.0	40.7	-3.1	12.7	-0.2	5.9	0.8	1.9	1.6	-6.6	-2.5	2.7	
Q4	-28.1	6.5	-0.2	26.5	-2.5	8.0	2.0	5.4	-0.4	4.9	3.3	-3.4	-0.1	3.4	
2016 Q1	-18.8	12.4	6.8	-2.8	3.2	-10.4	5.7	3.1	-2.3	5.7	3.2	-4.3	-0.6	1.8	
Q2	-16.0	10.2	5.8	-11.7	5.8	-2.3	7.1	1.7	-4.7	1.2	-0.6	3.4	1.3	1.6	
Q3	2.8	13.8	12.2	-11.1	3.9	-14.0	9.5	3.7	-12.7	0.7	-3.3	-0.5	-2.0	1.7	

Users of these data should note that there may be instances where the period on period growths for the same component differ between tables. This is due to the growth rates being calculated at a higher precision than 1 dp within the production system. This accuracy is truncated when transferred into the published tables.

4A.A CONSTRUCTION OUTPUT: VALUE SEASONALLY ADJUSTED CURRENT PRICES BY SECTOR

£ million

	New Housing			Other New Work				Repair and Maintenance						All Repair and Mainten- ance	All Work	
	Public housing	Private housing	Total new housing	Infrast- ructure	Excluding Infrastructure			All new work	Housing			Other Work				
					Public	Private industri- al	Private commerc- ial		Public housing	Private housing	Total housing	Infrast- ructure	Public			Private
MVM9	MVN2	MVN3	MVN4	MVN5	MVN6	MVN7	MVN8	MVN9	MVNM	MVO2	N42T	N42U	N42V	MVO4	MVO5	
1997	1 028	7 559	8 587	7 953	3 063	4 536	12 631	36 770	5 229	7 460	12 689	-	4 669	6 862	24 220	60 990
1998	881	8 146	9 027	7 703	3 343	4 893	14 747	39 713	5 110	7 890	13 000	-	4 778	7 334	25 112	64 825
1999	824	8 079	8 903	7 610	3 907	5 030	17 713	43 163	5 059	7 990	13 049	-	4 882	7 487	25 418	68 581
2000	1 075	9 475	10 550	7 941	3 863	4 717	18 608	45 679	5 104	8 358	13 462	-	5 158	8 412	27 032	72 711
2001	1 174	9 639	10 813	8 814	4 253	4 709	19 988	48 577	5 164	8 870	14 034	-	5 541	9 808	29 383	77 960
2002	1 411	11 453	12 864	10 033	5 517	4 323	22 220	54 957	4 974	10 255	15 229	-	6 065	10 969	32 263	87 220
2003	1 706	15 017	16 723	9 333	7 280	4 765	22 893	60 994	5 781	11 146	16 927	-	7 168	12 169	36 264	97 258
2004	2 210	18 977	21 187	8 243	8 638	5 210	25 509	68 787	6 414	11 951	18 365	-	7 215	12 291	37 871	106 658
2005	2 251	20 715	22 966	8 241	8 362	5 610	26 325	71 504	6 642	12 276	18 918	-	8 044	13 027	39 989	111 493
2006	2 853	21 765	24 618	8 178	8 047	6 308	30 121	77 272	6 819	12 568	19 387	-	7 868	13 794	41 049	118 321
2007	3 480	22 146	25 626	8 642	8 347	6 438	34 404	83 457	6 885	13 476	20 361	-	7 439	15 807	43 607	127 064
2008	3 299	18 138	21 437	9 715	9 988	5 339	35 190	81 669	7 467	14 708	22 175	-	8 635	16 165	46 975	128 644
2009	3 327	12 592	15 919	10 738	11 857	3 515	25 558	67 587	7 417	13 283	20 700	-	8 631	14 165	43 496	111 083
2010	4 891	14 839	19 730	13 538	14 372	3 550	23 712	74 902	7 873	14 406	22 279	6 841	5 072	8 290	42 482	117 384
2011	4 919	16 398	21 317	15 321	13 306	3 364	24 275	77 584	7 224	15 159	22 383	8 030	5 044	8 963	44 420	122 005
2012	4 027	16 235	20 262	14 103	10 795	3 718	22 485	71 363	7 613	15 070	22 683	8 084	4 962	9 191	44 921	116 284
2013	4 334	18 119	22 453	15 112	10 227	3 538	23 587	74 917	7 518	16 132	23 650	8 375	5 341	9 703	47 069	121 986
2014	5 850	23 807	29 657	14 747	10 295	4 142	26 124	84 965	7 751	18 012	25 763	9 154	5 834	10 352	51 103	136 068
2015	4 882	26 283	31 165	20 882	10 475	4 690	27 157	94 369	7 882	18 476	26 358	8 460	4 819	11 035	50 672	145 040

Users of these data should note that there may be instances where the period on period growths for the same component differ between tables. This is due to the growth rates being calculated at a higher precision than 1 dp within the production system. This accuracy is truncated when transferred into the published tables.

4A CONSTRUCTION OUTPUT: VALUE NON-SEASONALLY ADJUSTED CURRENT PRICES BY SECTOR

£ million

	New Housing			Other New Work				Repair and Maintenance				Other Work		All Repair and Mainten- ance	All Work	
	Public housing	Private housing	Total new housing	Infrast- ructure	Excluding Infrastructure			Housing				Public	Private			
					Public	Private industr- ial	Private commerc- ial	All new work	Public housing	Private housing	Total housing					Infrast- ructure
	MV6L	MV6M	MVM5	MV6N	MV6O	MV6P	MV6Q	MV6R	MV6S	MV6T	MV6V	MV6W	MV6X	MV6Y	MV6Z	MV72
1997	1 028	7 559	8 587	7 953	3 063	4 536	12 631	36 770	5 229	7 460	12 689	-	4 669	6 862	24 220	60 990
1998	881	8 146	9 027	7 703	3 343	4 893	14 747	39 713	5 110	7 890	13 000	-	4 778	7 334	25 112	64 825
1999	824	8 079	8 903	7 610	3 907	5 030	17 713	43 163	5 059	7 990	13 049	-	4 882	7 487	25 418	68 581
2000	1 075	9 475	10 550	7 941	3 863	4 717	18 608	45 679	5 104	8 358	13 462	-	5 158	8 412	27 032	72 711
2001	1 174	9 639	10 813	8 814	4 253	4 709	19 988	48 577	5 164	8 870	14 034	-	5 541	9 808	29 383	77 960
2002	1 411	11 453	12 864	10 033	5 517	4 323	22 220	54 957	4 974	10 255	15 229	-	6 065	10 969	32 263	87 220
2003	1 706	15 017	16 723	9 333	7 280	4 765	22 893	60 994	5 781	11 146	16 927	-	7 168	12 169	36 264	97 258
2004	2 210	18 977	21 187	8 243	8 638	5 210	25 509	68 787	6 414	11 951	18 365	-	7 215	12 291	37 871	106 658
2005	2 251	20 715	22 966	8 241	8 362	5 610	26 325	71 504	6 642	12 276	18 918	-	8 044	13 027	39 989	111 493
2006	2 853	21 765	24 618	8 178	8 047	6 308	30 121	77 272	6 819	12 568	19 387	-	7 868	13 794	41 049	118 321
2007	3 480	22 146	25 626	8 642	8 347	6 438	34 404	83 457	6 885	13 476	20 361	-	7 439	15 807	43 607	127 064
2008	3 299	18 138	21 437	9 715	9 988	5 339	35 190	81 669	7 467	14 708	22 175	-	8 635	16 165	46 975	128 644
2009	3 327	12 592	15 919	10 738	11 857	3 515	25 558	67 587	7 417	13 283	20 700	-	8 631	14 165	43 496	111 083
2010	4 893	14 839	19 732	13 540	14 372	3 551	23 710	74 905	7 871	14 405	22 276	6 841	5 074	8 290	42 480	117 385
2011	4 919	16 398	21 317	15 321	13 306	3 364	24 275	77 584	7 224	15 159	22 383	7 762	5 044	8 963	44 152	121 737
2012	4 027	16 235	20 262	14 103	10 795	3 718	22 485	71 363	7 613	15 070	22 683	7 815	4 962	9 191	44 651	116 014
2013	4 334	18 119	22 453	15 112	10 227	3 538	23 587	74 917	7 518	16 132	23 650	8 096	5 341	9 703	46 789	121 706
2014	5 782	23 622	29 405	15 384	10 360	4 201	25 944	85 294	7 784	17 969	25 753	8 809	5 513	10 642	50 717	136 011
2015	4 891	26 299	31 191	20 489	10 530	4 734	26 990	93 933	7 910	18 510	26 420	8 496	4 867	11 077	50 861	144 794

Users of these data should note that there may be instances where the period on period growths for the same component differ between tables. This is due to the growth rates being calculated at a higher precision than 1 dp within the production system. This accuracy is truncated when transferred into the published tables.

9A.A CONSTRUCTION OUTPUT: IMPLIED PRICE DEFLATOR NON-SEASONALLY ADJUSTED INDEX NUMBER

BY SECTOR

Index 2013 = 100

	New Housing			Other New Work				Repair and Maintenance					All Repair and Maintena- nce	All Work
	Public housing	Private housing	Total new housing	Infra- structure	Excluding Infrastructure			All new work	Housing			Non housing R&M		
					Public	Private industri- al	Private commerci- al		Public housing	Private housing	Total housing			
	MVK3	MVK4	MVM6	MVK5	MVK6	MVK7	MVK8	MVK9	MVKB	MVL2	MVL3	MVL4	MVL5	MVL6
1997	55.9	49.2	50.0	65.8	58.6	60.5	57.2	57.4	59.2	39.4	45.7	58.9	51.3	54.8
1998	59.2	52.6	53.2	65.6	60.7	64.2	61.6	60.4	61.9	40.9	47.2	61.3	53.2	57.4
1999	63.5	57.8	58.3	66.3	62.8	63.7	65.8	63.8	63.6	41.7	48.2	62.6	54.3	59.9
2000	66.2	60.8	61.3	73.9	65.7	67.0	68.8	67.4	66.6	43.6	50.2	65.4	56.9	63.1
2001	70.6	66.2	66.7	76.7	71.5	65.5	74.5	71.9	71.2	44.3	51.5	67.8	59.0	66.4
2002	75.1	72.2	72.5	77.3	73.5	75.9	80.2	76.9	72.3	47.2	53.4	70.6	61.3	70.3
2003	79.6	75.8	76.2	76.1	77.1	79.0	85.7	79.9	74.3	52.6	58.4	77.9	67.5	74.8
2004	85.6	78.6	79.3	76.7	81.3	83.7	86.3	82.0	74.8	57.9	62.9	82.0	71.5	78.0
2005	92.6	83.2	84.1	79.8	87.4	91.6	92.9	87.6	77.9	65.1	69.1	86.2	77.2	83.5
2006	99.1	86.8	88.1	85.7	91.1	94.7	97.5	92.1	83.2	70.8	74.7	88.0	81.2	88.0
2007	104.4	89.5	91.3	91.4	95.7	98.7	100.8	96.1	88.4	77.5	80.9	92.0	86.4	92.5
2008	109.4	94.4	96.5	92.3	102.8	105.7	101.8	99.7	92.9	83.5	86.5	94.8	90.7	96.2
2009	108.2	95.3	97.7	89.2	101.2	99.1	98.6	97.5	95.0	86.4	89.3	96.6	92.9	95.6
2010	102.9	94.1	96.1	87.6	92.8	89.9	92.8	92.6	93.9	87.4	89.6	96.5	92.8	92.7
2011	101.2	95.3	96.6	91.4	92.8	94.0	92.7	93.6	93.8	91.2	92.0	97.4	94.6	94.0
2012	99.5	97.6	98.0	96.2	96.0	97.2	95.8	96.6	97.2	95.7	96.2	98.4	97.3	96.9
2013	100.0	100.0	100.0	100.0	100.0	100.0	100.0	100.0	100.0	100.0	100.0	100.0	100.0	100.0
2014	102.4	104.0	103.7	104.2	102.9	102.6	104.2	103.7	101.5	102.5	102.2	101.0	101.6	102.9
2015	104.9	106.5	106.3	106.4	105.4	104.5	106.7	106.2	102.3	103.4	103.1	102.3	102.8	105.0

Users of these data should note that there may be instances where the period on period growths for the same component differ between tables. This is due to the growth rates being calculated at a higher precision than 1 dp within the production system. This accuracy is truncated when transferred into the published tables.

