

**Article**

---

# Young People and Social Capital

**Phase 2 of Joint ONS/DfES Project: Young People and Social Capital**

---

Social and Welfare

**Figen Deviren and Penny Babb**

August 2005

© Crown copyright

Office for National Statistics

1 Drummond Gate

London SW1V 2QQ

Tel: 020 7533 9233

Fax: 020 7533 9292

**We acknowledge the work conducted by Rosalyn Harper<sup>1</sup>, Elizabeth Whiting<sup>1</sup>, Maryanne Kelly<sup>1</sup>, Robert Bell<sup>2</sup> and Chris Cuthbert<sup>2</sup> in the research, design and preparation of the question set.**

1. Office for National Statistics
2. Children and Young Persons Unit, DfES (formerly Home Office)

## Table of contents

Introduction .....	1
Background .....	1
Aims .....	1
Data and methods .....	2
Results .....	3
Discussion .....	20
Conclusion .....	23
Bibliography/reference .....	24
Appendix .....	24

## 1. Introduction

This is the report on phase 2 of the Young People and Social Capital project carried out by the Office for National Statistics (ONS) and jointly funded with the Department for Education and Skills.

Previous studies have suggested that young people are less likely than older people to participate in social and civic activities. However, a literature review conducted in phase 1 of this project concluded that young people's civic and social participation may be underestimated due to the nature of the measurement and conceptualisation of the social capital indicators. This report describes the results of a National Statistics (NS) Omnibus Survey module that was specifically designed to evaluate the nature of the social capital experience of young people aged 16 to 24.

## 2. Background

Data from the Social Capital module of the General Household Survey (GHS) 2000, the Home Office Citizenship Survey (HOCS) 2001 and HOCS 2003 indicated that young people are less likely than older people to vote, to be involved in their local community (see Whiting and Harper, 2003 for a detailed review of the GHS results) or to undertake formal voluntary work (Charities Aid Foundation, 2002). In contrast, young people were found to have higher levels of social capital in qualitative investigations (Lister, 2001, 2002; National Centre for Social Research, 2000; Charities Aid Foundation, 2002). The qualitative findings reflected the broader nature of the involvement of young people in political and civic activities, such as demonstrations, petitions and informal help (Whiting and Harper, 2003).

To provide a more accurate picture of the social and civic activities of young people, a new set of questions was developed in this project. The questions were designed specifically to reflect the particular activities that young people are most likely to engage in, which in turn, should produce more appropriate indicators of social capital for young people. (See Whiting and Harper, 2003 for details on the development of the questions.)

## 3. Aims

The project aims were to determine the nature of young people's social capital experience and to compare the rates of the indicators for those aged 16 to 24 with those for people aged 25 and over. The project investigates not only what is of interest to young people and how they involve themselves but also how these aspects of social capital differ from the experience of older people and from previous findings.

The analysis aims to answer the following questions:

- Are the rates for social and civic participation for young people different to those found in the GHS and HOCS?
- Which socio-demographic characteristics are associated with participation?
- Are there variations in interests and participation between young people aged 16 to 19 and those aged 20 to 24

## 4. Data and Methods

### 4.1 Data

The questions were placed on three sweeps of the NS Omnibus Survey in October and November 2003 and February 2004. The Omnibus Survey is a multi-purpose survey developed by ONS for use by government and non-profit organisations. The survey uses a stratified random probability sample. Approximately 1,800 adults in Great Britain are interviewed each month and the average response rate is 66 per cent. A single adult in each household is usually selected randomly for interview at each address. The module was asked of people aged 16 to 24 in the first month and then extended to all adults in the second and third months. A comparison of the sweeps revealed no significant differences in the demographics of the respondents. The sample size was 3,712, of which 483 were young people and 3,229 were aged 25 and over. The number of 'no answers' to individual questions was around 1 per cent. A question regarding signing a petition was only included in November 2003 and February 2004, and was therefore answered by a smaller sample of young people (343).

The findings are detailed in the results section and in Tables 1 to 9.

#### *Dimensions of social capital*

Six dimensions of social capital were measured in the question set and defined as follows:

##### *Issues on the political agenda*

An interest in current affairs – both national and international issues that are of interest to young people, such as terrorism, bullying and education.

##### *Informal sociability*

Activities that people participate in on an informal basis that involve others, for example, playing a sport or going to a pub, restaurant, cinema or concert.

##### *Social participation and voluntary activity*

Involvement in good causes and informal volunteering. These range from organising a charitable event to buying Fair Trade goods.

##### *Civic participation*

An individual's involvement in local and national affairs, and perceptions of an individual's ability to influence them. This ranges from signing a petition to active participation such as taking part in protest marches.

##### *Social networks*

Support from family and friends. The exchange between people within their social networks, and the shared identities that develop, can influence the amount of support an individual has, as well as providing access to other sources of help.

##### *Trust*

The level of trust individuals have in others – those they know and do not know, as well as trust in formal institutions.

## 4.2 Analysis methods

Initially the data were cross-tabulated for the two age groups for each response to identify any observed differences between the groups. The differences were tested using tests of proportion.

Differences were observed between the ethnic groups for several dimensions of social capital; however the non-White group was too small for any meaningful conclusions to be drawn from the results of the analysis. Accordingly the results are included in the tables but not discussed in the text of this report.

For analysis purposes the respondents were categorised into groups within each of the six dimensions of social capital creating categories of: none, low, medium and high participation/interest/activity as appropriate. A reference category was chosen for each independent variable, usually the most prevalent category.

## 5. Results

The results of the comparative analysis between young people and those aged 25 and over for the six dimensions of social capital are outlined below. Tables 1 to 6 detail the responses for each dimension.

### 5.1 Descriptive results

#### *Issues on the political agenda*

Over 94 per cent of young people were concerned about at least one political issue, however they were less interested in all issues than older people. The most common issues discussed by both young people (71-73 per cent) and those aged 25 and over (81 per cent) were crime and terrorist attacks. War was also commonly discussed by both age groups: 63 per cent of young people and 70 per cent of older people. The timing of the survey coincided with a visit to the United Kingdom by the President of the USA who highlighted his 'war on terror'. The visit was accompanied by anti-war protests that were widely reported in the media. The proportions between the groups were similar for discussing racial prejudice and illegal drug taking. [See Table 1 for detailed results.]

#### *Informal sociability*

Young people were more likely to go were shopping with others or go to a pub, restaurant, cinema or concert than those aged 25 and over. These activities were undertaken by about 88 per cent of young people and by 72 per cent of those aged 25 and over. Over 70 per cent of young people went to nightclubs or parties compared with 30 per cent of older people. Young people were also more likely to play sports or 'hang around' with friends. Although differences are apparent in the activities undertaken by the two age groups, the list of activities was selected to be specifically relevant to young people and so may not reflect the range of preferred activities of people at older ages. [See Table 2.]

**Table 1**  
**Issues on the political agenda: by age group**  
 Great Britain

Do you talk about any of the following issues with friends, family or work colleagues?	Percentages	
	Age 16-24	Age 25 and over
Crime	73	81*
Terrorist attacks in the world	71	81*
Wars taking place in the world	63	70*
Illegal drug-taking	60	63
Racial prejudice	53	52
Quality of education/training	46	57*
Bullying	38	46*
Cruelty to animals	36	52*
Government benefits	36	47*
Hunger in poor countries	30	48*
Pollution/green issues	26	46*
None of these	6	4
Other (please specify)	3	5
Unweighted sample	474	3,197
Weighted base	660	3,008

\*Statistically significant difference at 0.05% level

**Table 2**  
**Informal sociability: by age group**  
 Great Britain

The following is a list of things people do for fun, with others. Have you done any of these things in the past month, not as part of an organised group or club?	Percentages	
	Age 16-24	Age 25 and over
Went shopping with others	88	72*
Went to a pub, restaurant, cinema or concert	87	72*
Went to a friend's house	82	67*
Went to a party, nightclub or disco	71	30*
Played snooker, darts or pool	43	14*
Played a sport	36	16*
Hung around with friends	30	6*
Went to an amusement arcade	20	9*
Attended a live football match	18	15
None of these	1	8
Other	0	3
Unweighted sample	475	3,195
Weighted base	662	3,006

\* Statistically significant difference at 0.05% level

### *Social participation and voluntary activity*

Young people were less likely than older people to participate in acts of charity or citizenship and one in ten had not participated in any. The majority of respondents had made an effort to give of either their time or money to charities or good causes (90 per cent of young people and 95 per cent of those aged 25 and over) in the year before interview. The most common activities were recycling, carried out by 60 per cent of young people and 79 per cent of those aged 25 and over, and giving money to charities (51 per cent and 78 per cent respectively). [See Table 3.]

Respondents in both age groups were less likely to undertake voluntary activities than to participate socially. The most common voluntary activity was looking after children for someone: 37 per cent of young people and 36 per cent of those aged 25 and over. Young people were less likely than older people to have performed tasks such as shopping for someone or keeping in touch with someone who was housebound. Overall, 63 per cent of young people had performed at least one voluntary activity in the 12 months before interview, compared with 70 per cent of older people. [See Table 4.]

### *Civic participation*

Little difference was observed between the two age groups in terms of civic participation. A similar proportion of both age groups had signed a petition: 31 per cent of young people and 29 per cent of those aged 25 and over had done so in the 12 months before interview. Overall, just over a third (37 per cent) of young people had undertaken some civic action in the 12 months before interview compared with almost half of older people (48 per cent). [See Table 5.]

**Table 3**

#### **Social participation: by age group**

Great Britain

	Percentages	
In the last 12 months have you done any of the following?	Age 16-24	Age 25 and over
Recycled used materials	60	79*
Given money/goods to other charitable causes	51	78*
Sponsored someone else	42	57*
Given money/goods to the homeless	33	39
Bought Fair Trade/charity goods	26	48*
Bought the Big Issue	20	21
Collected money for charity	16	23
Organised a charitable event	6	7
Other things for a good cause	3	5
None of these	10	5
Unweighted sample	475	3,199
Weighted base	661	3,009

\* Statistically significant difference at 0.05% level

**Table 4****Voluntary activity: by age group**

Great Britain

Percentages

In the last 12 months, have you done any of these things unpaid for anyone who doesn't live in your home? Please do not include any help you gave as a volunteer for an organisation or group?	Percentages	
	Age 16-24	Age 25 and over
Looking after children for someone	37	36
Shopping for someone	24	34*
Household jobs or gardening for someone	20	24
Decorating or repairs for someone	16	18
Keeping in touch with someone housebound	16	34*
Writing letters/form filling for someone	16	23
Looking after someone who is sick	6	11
Other (Please Specify)	0	3
None of these	36	30
Unweighted sample	475	3,199
Weighted base	661	3,011

\* Statistically significant difference at 0.05% level

**Table 5****Civic participation: by age group**

Great Britain

Percentages

Have you done any of the following to show concern for an issue in the past 12 months?	Percentages	
	Age 16-24	Age 25 and over
Signed a petition <sup>1</sup>	31	29
Attended a school/college/club committee	9	9
Took part in a protest	6	4
Attended a public meeting	6	9
Contacted the appropriate organisation	5	16*
Contacted a local councillor/MP	4	12
Contacted the media	3	6
Helped organise a petition	2	2
Attended a tenants'/local residents' group	1	6
Thought about it but didn't do anything	1	1
Other	0	1
None of these	62	51*
Unweighted sample	475	3,198
Weighted base	661	3,008

<sup>1</sup> This question was not included in the October 2003 survey

\* Statistically significant difference at 0.05% level

### *Social networks*

Young people had higher levels of social networks than those aged 25 and over. Nearly all respondents had someone to talk to if they were really upset about something: 97 per cent of young people and 95 per cent of those aged 25 and over reported that they had at least one person they could speak to. Over two thirds (69 per cent) of young people would talk to a friend, while over half (56 per cent) of those aged 25 and over would speak to a spouse. Just over a third of young people had three or more people to speak to, compared with just under a quarter of adults aged 25 and over. [See Table 6.]

**Table 6**

**Social networks: by age group**  
Great Britain

Percentages

When you've been really upset about something, who did you talk to? Or, if you were really upset about something, who would you talk to about it?	Age 16-24	Age 25 and over
A friend	69	39*
Parent or guardian	50	16*
Boyfriend/girlfriend	38	11*
Brother/sister	34	20*
Family member	10	24
Work colleague/boss	10	11
School/college teacher	5	1
Spouse	4	56*
Other	1	3
No one	3	5
Unweighted sample	475	3,197
Weighted base	661	3,007

\* Statistically significant difference at 0.05% level

### *Trust*

There were no significant differences between the two age groups in their levels of trust. Teachers and lecturers were trusted by the largest percentage of respondents, by 88 per cent of young people and 84 per cent of those aged 25 and over. Relatively large percentages of respondents expressed trust in the police and the courts: 68 per cent and 64 per cent of young people, compared with 74 per cent and 60 per cent of older people. In contrast lower proportions of people trusted political organisations – around a third of young people and a quarter of those aged 25 and over said they trusted the Government and the Welsh Assembly/Scottish Executive 'a lot' or 'a fair amount'. [See Table 7.]

**Table 7**

**Trust: by age group**  
Great Britain

Can you tell me how much do you trust:	Percentages													
	Police		Courts		Government		Welsh Assembly		Scottish Executive		Teachers or lecturers		Religious leaders	
	Age 16-24	Age 25 and over	Age 16-24	Age 25 and over	Age 16-24	Age 25 and over	Age 16-24	Age 25 and over	Age 16-24	Age 25 and over	Age 16-24	Age 25 and over	Age 16-24	Age 25 and over
A lot	17	20	15	13	3	3	0	1	9	4	30	23	12	8
A fair amount	50	54	49	47	31	24	39	24	26	25	58	61	25	33
Not very much	23	18	20	22	38	45	33	38	28	36	8	7	29	30
Not at all	7	4	4	7	17	24	11	20	19	21	2	2	16	17
No opinion/Don't know/No experience	2	4	13	12	11	4	17	18	19	14	3	8	18	12
Unweighted sample	475	3,202	475	3,202	475	3,202	12	167	38	270	475	3,202	475	3,201
Weighted base	660	3,014	661	3,013	661	3,014	18	164	47	240	659	3,014	662	3,013

### *Reciprocal trust between young people and adults*

Adults aged 25 and over were more likely to express 'a lot' or 'a fair amount' of trust in young people than young people believed they were trusted by adults: while 37 per cent of older people said they trusted young people, only 18 per cent of young people felt they were trusted by adults. Similarly, while 55 per cent of young people expressed 'a lot' or 'a fair amount' of trust in adults, 45 per cent of those aged 25 and over felt they were trusted by young people. [See Tables 8 and 9.]

**Table 8**

#### **Young people's trust in adults: by age group**

Great Britain

How much do young people trust adults?	Percentages	
	Age 16-24	Age 25 and over
A lot	5	3
A fair amount	50	41*
Not very much	41	49*
Not at all	2	4
No experience / Don't know	1	3
Unweighted sample	475	3,199
Weighted base	661	3,008

\* Statistically significant difference at 0.05% level

**Table 9**

#### **Adults trust in young people: by age group**

Great Britain

How much do adults trust young people?	Percentages	
	Age 16-24	Age 25 and over
A lot	2	4
A fair amount	17	33*
Not very much	69	56*
Not at all	12	5
No experience / Don't know	1	2
Unweighted sample	475	3,199
Weighted base	661	3,009

\* Statistically significant difference at 0.05% level

## 5.2 Regression analysis

Statistical analysis was conducted using logistic and multinomial logistic regression. Logistic regression looks at how different variables interrelate by comparing the odds of the behaviour occurring for different combinations of the independent variables. Multinomial regression was used where there were more than two levels of the outcome variable. [With multinomial logistic regression a polytomous model is obtained whereby the ratio of the odds of the event occurring to the odds that the event will not occur is calculated for each level of

dependent variable.] These statistical techniques were used to identify whether a socio-demographic variable had an effect on the outcome variable, allowing for the influence of all factors in the model. In this way it was ascertained whether there was a statistically significant difference between the behaviour and attitudes of young people and those aged 25 and over. The results are given in the form of odds ratios.

### 5.2.1 Comparison between young and older people

Young people were more likely than older people to participate in informal social activities. The odds ratio for those participating in up to three activities as shown in the first row of Table 10 is 0.22. This means that young people were on average four and a half times more likely to participate in up to three activities than those aged 25 and over. They were 14 times more likely to participate in between four and six activities and 22 times more likely to participate in more than seven activities, than older people. In terms of social support young people were almost twice as likely as older people to have between two and three people to turn to in times of need. Young people were also three times more likely to draw support from four or more individuals.

When asked about reciprocal trust, young people were more likely than older people to say that they (young people) had a high level of trust in adults. Equally when asked about the level of trust that adults have in young people, older people were more likely than young people to say that they (older people) had a high level of trust in young people.

Social participation involved the donation of time, money or goods to various causes (such as recycling used materials and giving money or goods to charitable causes). Older people were over two and a half times more likely to have participated in five or more such activities, compared with young people. Similarly when engaged in more than five different forms of informal voluntary activity, those aged 25 and over were around two and a half times more likely to provide help compared with young people. At lower levels of voluntary activity where help was provided in between one and four ways young and older people were equally as likely to participate.

Both young and older people were equally likely to have discussed between one and eight political issues. However, older people were three times more likely to have discussed more than nine issues than the young. Similarly, those aged 25 and over were more than twice as likely to be engaged in at least one form of civic activity compared with young people. However the age of the respondents had no effect on the level of trust in formal institutions and people in general.

**Table 10****Odds ratios for respondents aged 25 and over relative to young people for each dimension of social capital**

	Odds ratio High level	Odds ratio Medium level	Odds ratio Low level
Informal sociability	0.04***	0.06***	0.22*
Social support	0.33***	0.53***	-
Young peoples trust in adults	0.70**	-	-
Trust	0.81	0.85	-
Adult trust in young people	1.73***	-	-
Civic participation	2.29***	-	-
Voluntary activity	2.49*	2.57*	1.01
Social participation	2.54**	1.69*	0.84
Issues on the political agenda	3.43***	1.44	1.10

Significance of difference from the comparison group \*p<0.05, \*\*p<0.01 \*\*\*p<0.001

### 5.2.2 Young people: Within group comparison

One of the aims of the project was to make a comparison between young people aged 16 to 19 and 20 to 24 to examine variations in interests and participation. After investigating the relationship between the two age groups and the different dimensions of social capital it was found that there was no difference in the level of interest and participation between the two groups.

### 5.2.3 Effect of socio-demographic characteristics on dimensions of social capital

[See Table 10 in the Appendix for a summary]

Discussed below are the socio-demographic characteristics which had a relationship with each dimension of social capital. Tables 11 to 19 detail the odds ratios for each independent variable. Figures 1 to 9 represent the highest level of participation for each dimension of social capital and illustrate the statistically significant differences.

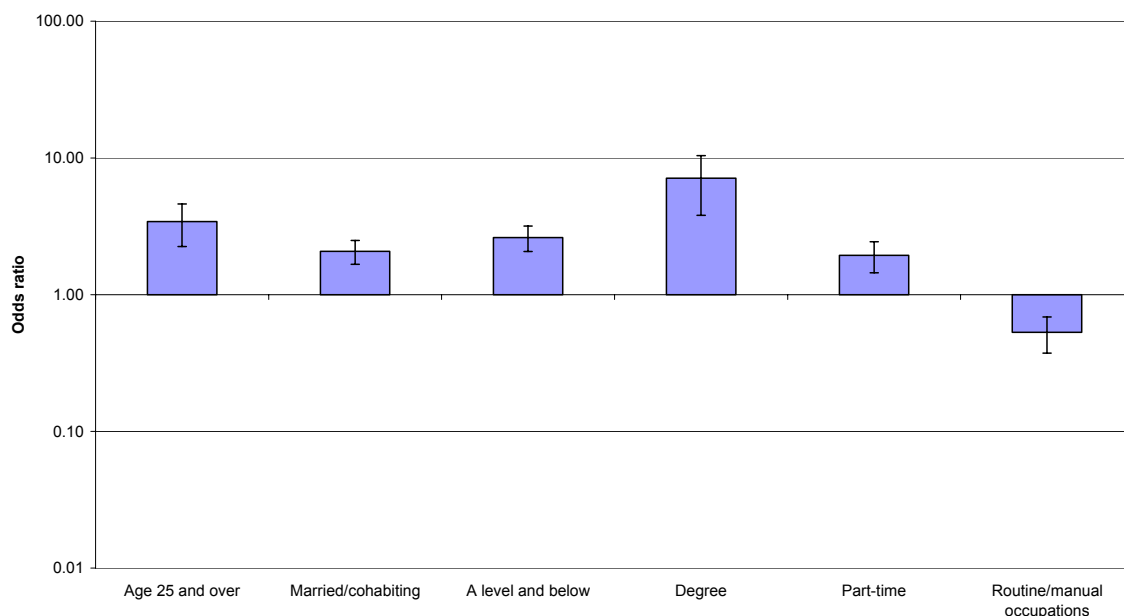
#### *Issues on the political agenda*

The most important factor affecting the number of issues discussed by the respondents was their level of education. Compared with those who had no qualifications, people educated at A level or below were two and a half times more likely to have a high level of interest in political issues. Those educated to degree level were seven times more likely than people with no qualifications to have a high level of interest.

The only other factor that had a consistent relationship with the number of issues discussed was marital status. Respondents who were married or cohabiting were around twice as likely at each level of interest to have discussed issues when compared with single, divorced or widowed respondents. [See Table 12 in the Appendix and Figure 1.]

**Figure 1: Issues on the political agenda**

*Logarithmic scale*



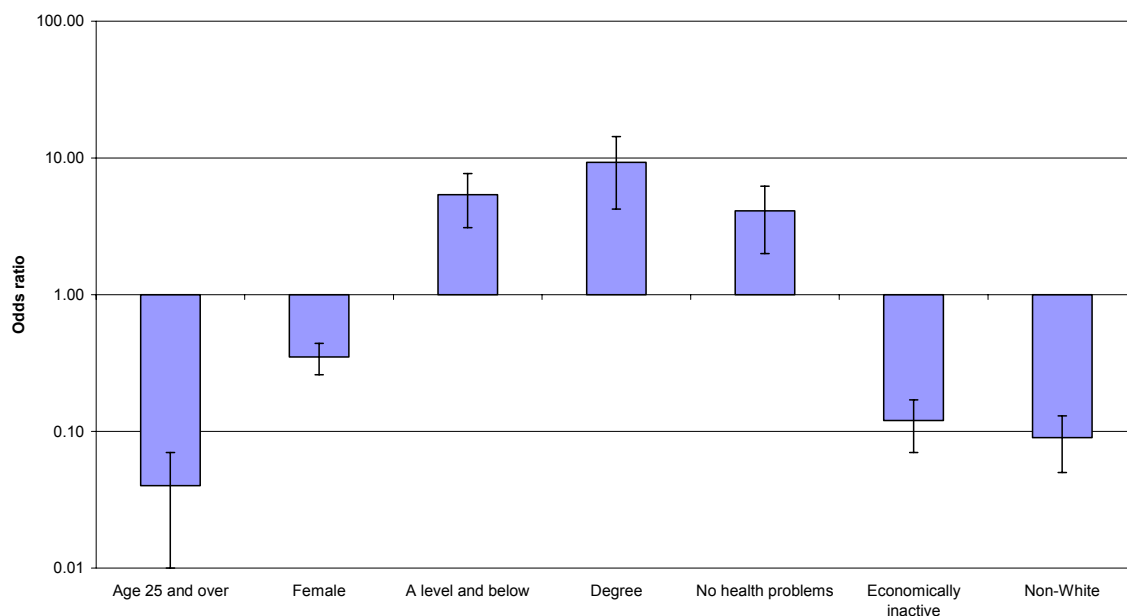
***Informal sociability***

The level of educational attainment was a factor in informal sociability at medium (four to six activities) and high levels (seven or more activities) of participation. People educated at A level or below were over five times more likely to participate in high levels of informal activity than those with no formal qualifications. Those educated to degree level were over nine times more likely to participate than those with no formal qualifications.

Males were three times more likely than females to participate in a high number of informal activities such as: playing a sport, or going to a pub, restaurant, cinema or concert. People in good health were over four times more likely to participate in a high number of activities than those with a limiting illness, problem or disability. Similarly people in employment were over eight times more likely to participate at a high level than those who were economically inactive. The economically inactive group was largely made up of those who are aged 55 and over (64 per cent). While these differences are significant it should be noted that there were wide confidence intervals around the estimates. [See Table 13 in the Appendix and Figure 2.]

**Figure 2: Informal sociability**

*Logarithmic scale*



Odds ratios are shown with 95% confidence intervals for statistically significant differences. The odds are relative to the reference categories, for details see Table 12.

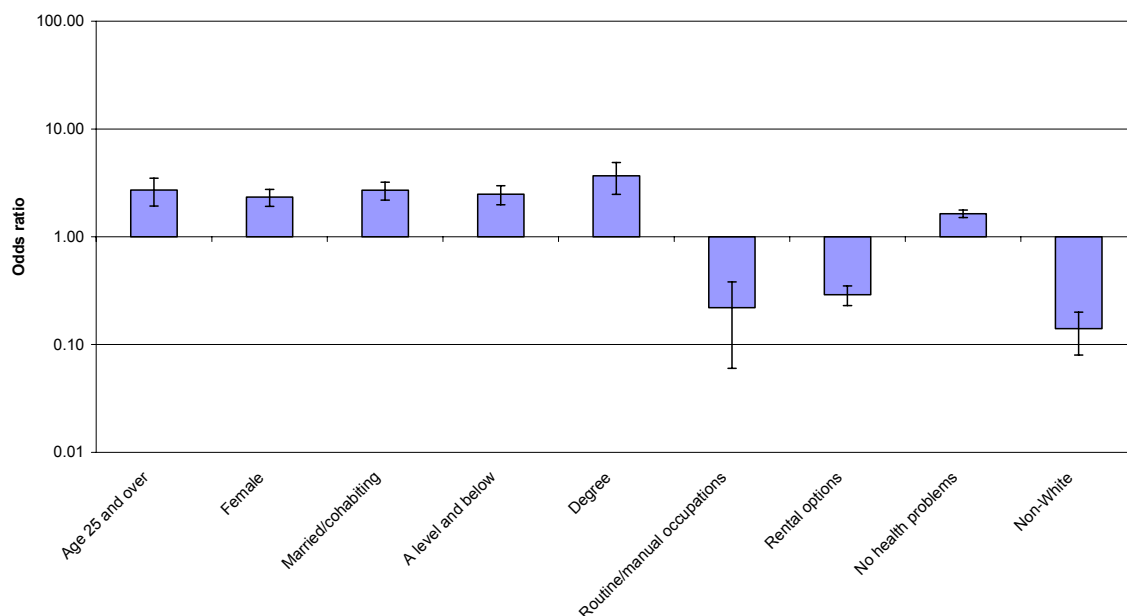
***Social participation and voluntary activity***

Women were more likely to participate in social activities than men. Women were almost twice as likely to participate at a medium level (three to four activities) and more than twice as likely to participate at a higher level (five to nine activities). Married or cohabiting individuals were more than two and a half times more likely to participate in a large number of activities than those who were single, widowed or divorced.

Respondents who owned or were buying their own home were three times more likely to participate highly than those who rented. Those in managerial or professional occupations were most likely to participate in a high number of activities than those in other occupations. They were more than four times more likely to participate in five or more different ways than people working in routine and manual occupations. [See Table 14 in the Appendix and Figure 3.]

**Figure 3: Social participation**

*Logarithmic scale*



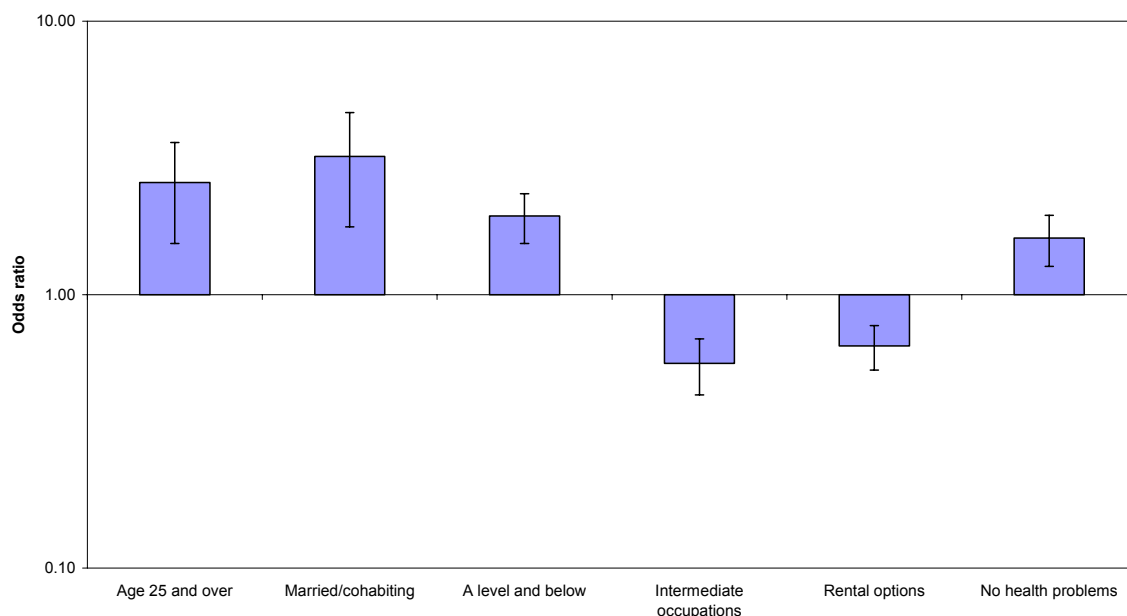
Odds ratios are shown with 95% confidence intervals for statistically significant differences. The odds are relative to the reference categories, for details see Table 13.

Voluntary activity encompassed help that was given on an informal basis and not as part of an organisation or group. The socio-demographic characteristic that showed the largest influence was marital status. Married or cohabiting individuals were three times more likely to provide a high level of help than those who were single, divorced or widowed. This was often in the form of providing childcare or shopping for someone.

Respondents with qualifications at A level or below were almost twice as likely to provide help than those with no qualifications but there was no significant difference between those with a degree and those with no qualifications. Health was also a relevant factor; healthy respondents were 61 per cent more likely to provide a high level of help when compared with those who had a limiting illness, problem or disability. [See Table 15 in the Appendix and Figure 4]

**Figure 4: Voluntary activity**

*Logarithmic scale*



Odds ratios are shown with 95% confidence intervals for statistically significant differences. The odds are relative to the reference categories, for details see Table 14.

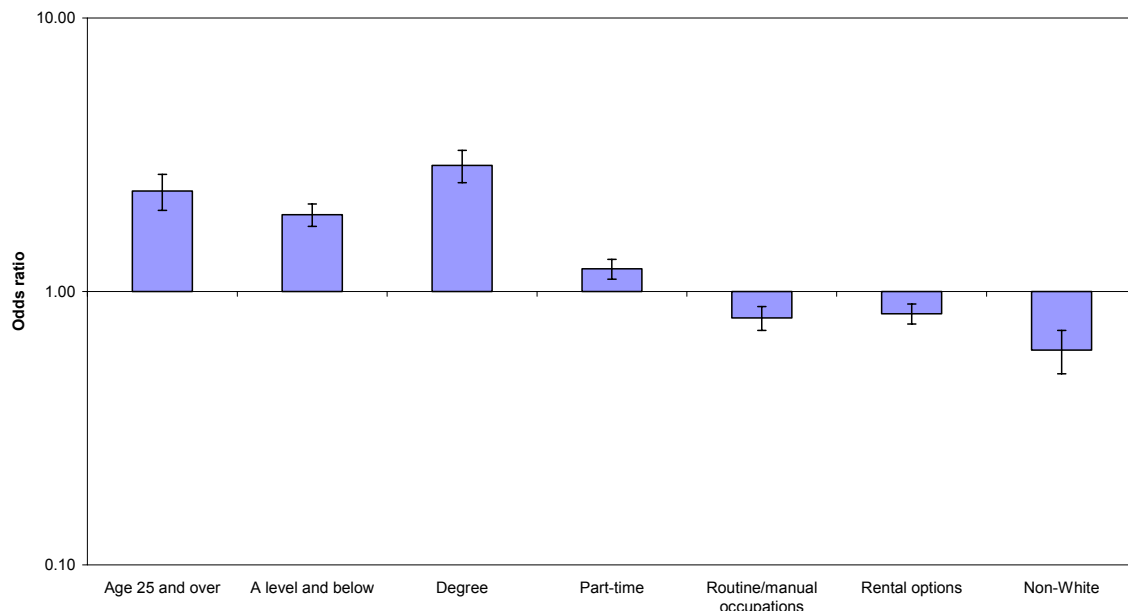
***Civic participation***

Civic participation increased with educational attainment. People educated to A level or below were almost twice as likely to be engaged in forms of civic activity compared with those who had no formal qualifications. People educated to degree level were nearly three times more likely to participate compared with those who had no formal qualifications.

Respondents engaged in a form of civic activity were 20 per cent more likely to work part time than full time. Participants were also 25 per cent less likely to be in routine and manual occupations compared with those in managerial or professional occupations. Those participating were 20 per cent more likely to own or be buying their own homes rather than renting. [See Table 16 in the Appendix and Figure 5.]

**Figure 5: Civic participation**

*Logarithmic scale*



Odds ratios are shown with 95% confidence intervals for statistically significant differences. The odds are relative to the reference categories, for details see Table 15.

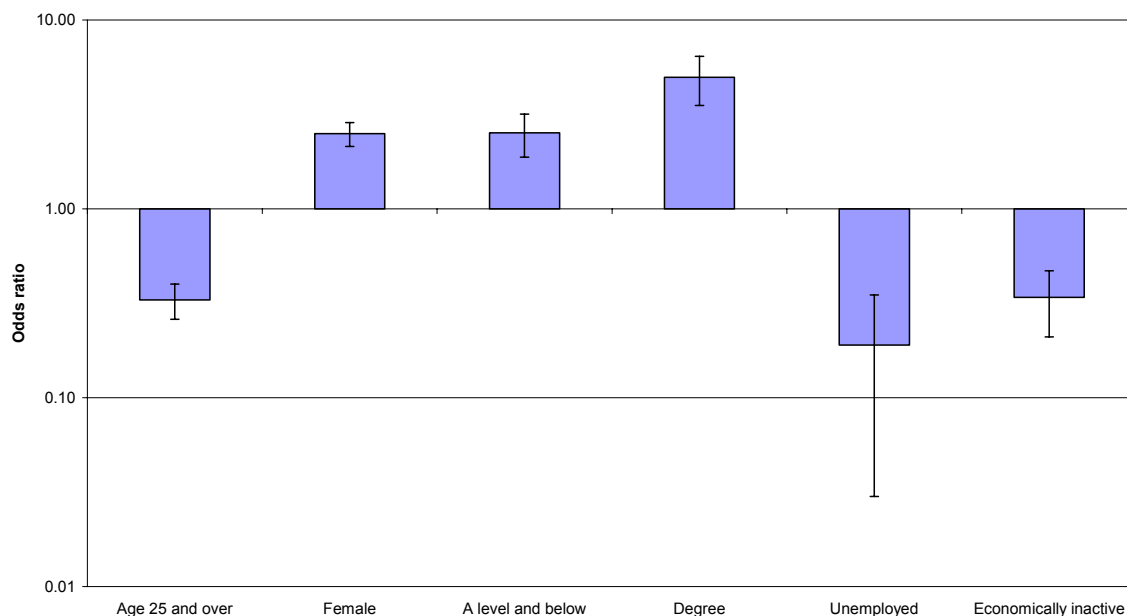
***Social networks***

Respondents with large social networks were two and a half times more likely to be female than male. The level of support also increased with educational attainment. Those educated to A level or below were two and a half times as likely to have large support networks than people with no formal qualifications. For people educated to degree level the likelihood of large support networks increased to five times that of people with no formal qualifications.

Respondents who were in employment were almost three times more likely to have large support networks than those who were economically inactive. [See Table 17 in the Appendix and Figure 6.]

**Figure 6: Social networks**

*Logarithmic scale*



Odds ratios are shown with 95% confidence intervals for statistically significant differences. The odds are relative to the reference categories, for details see Table 16.

### *Trust<sup>1</sup>*

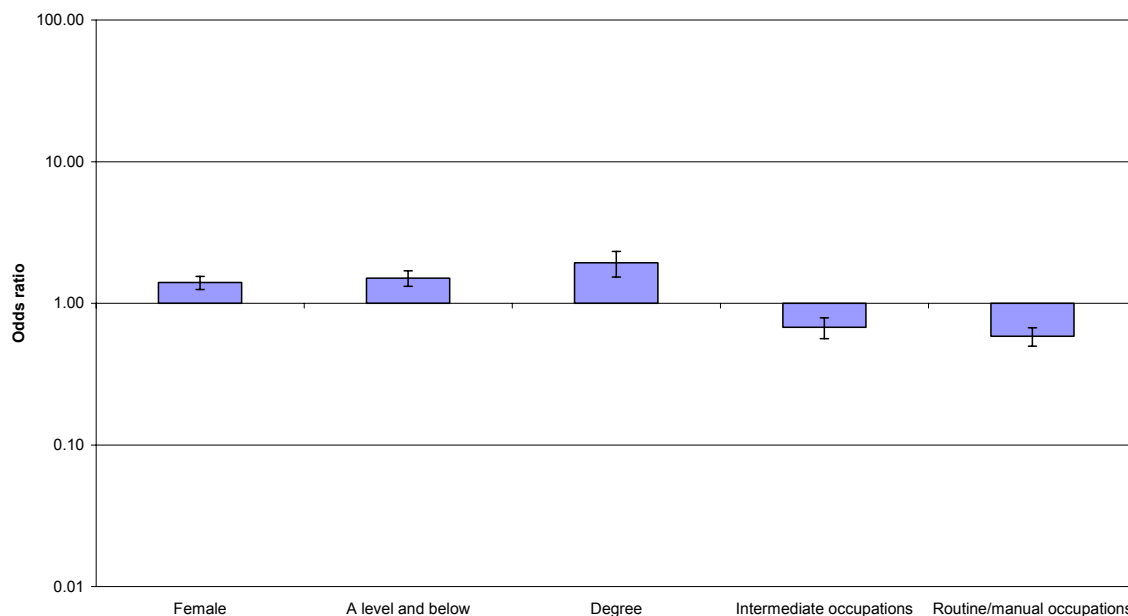
The level of education had an effect on levels of trust. Those educated to A level or below were 50 per cent more likely than those with no qualifications to have a high level of trust, while those educated to degree level were almost twice as likely to do so.

The occupation of respondents was significant, with those in managerial or professional occupations having higher levels of trust. They were almost 50 per cent more likely to have medium or high levels of trust when compared with those in intermediate occupations, and around 75 per cent more likely to have medium or high levels of trust than those in routine and manual occupations. [See Table 18 in the Appendix and Figure 7.]

<sup>1</sup> For analysis purposes the responses to the questions concerning trust in government, the courts, the police, teachers or lecturers and religious leaders were combined.

**Figure 7: Trust**

*Logarithmic scale*



Odds ratios are shown with 95% confidence intervals for statistically significant differences. The odds are relative to the reference categories, for details see Table 17.

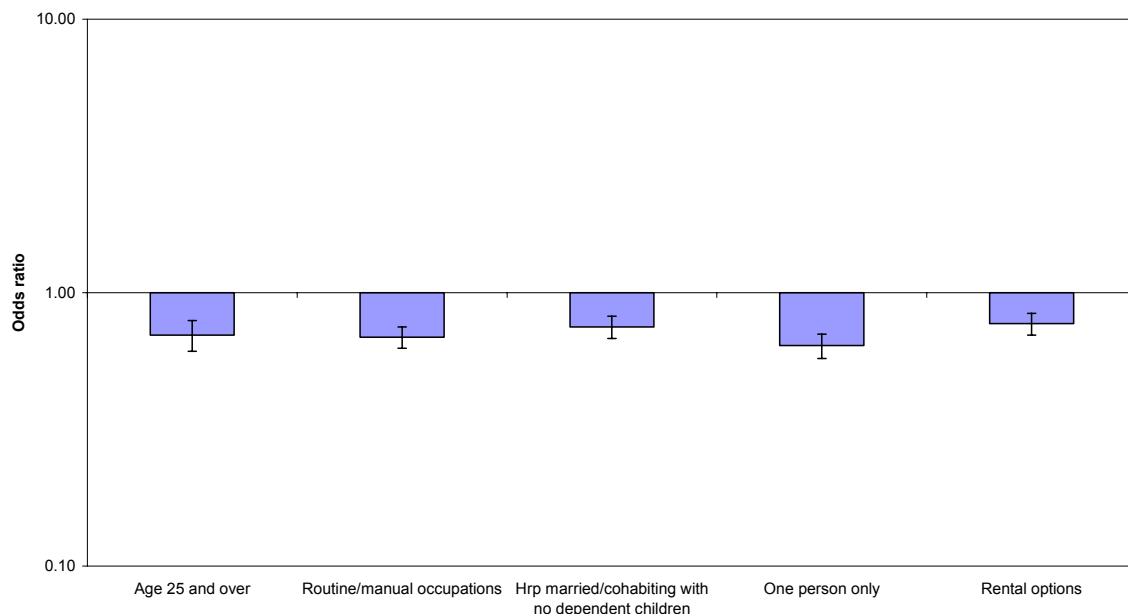
***Reciprocal trust between young people and adults***

Single person households or couples without dependent children were less likely to think that young people had a high level of trust in adults. Those in managerial and professional occupations were 45 per cent more likely to think that young people had a high level of trust in adults compared with those in routine or manual occupations.

Married or cohabiting respondents were a third more likely to think that adults had a high level of trust in young people compared with those who were single, divorced or widowed. [See Tables 19 and 20 in the Appendix and Figures 8 and 9.]

**Figure 8: Young people’s trust in adults**

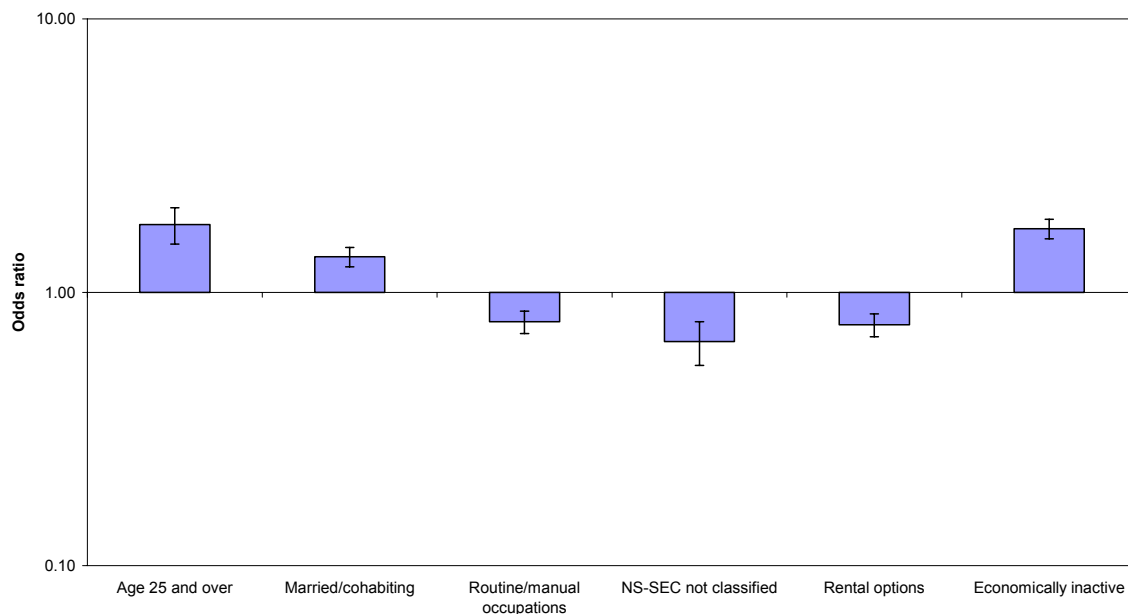
*Logarithmic scale*



Odds ratios are shown with 95% confidence intervals for statistically significant differences. The odds are relative to the reference categories, for details see Table 18.

**Figure 9: Adults’ trust in young people**

*Logarithmic scale*



Odds ratios are shown with 95% confidence intervals for statistically significant differences. The odds are relative to the reference categories, for details see Table 19.

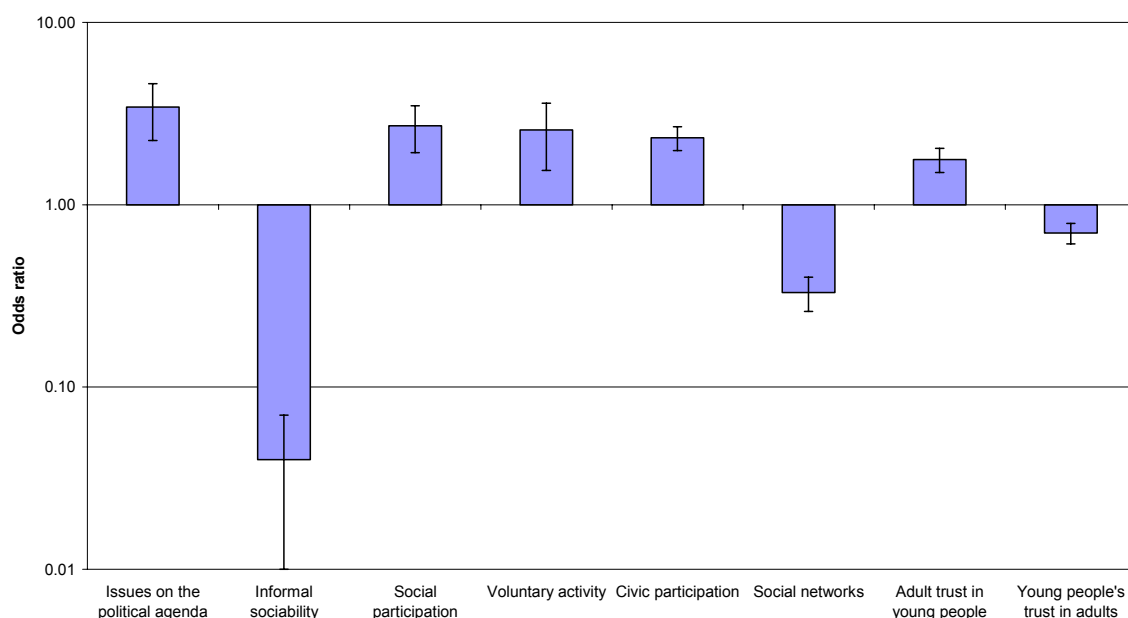
## 6. Discussion

Young people were found to have higher levels of informal sociability than other adults and to have well-developed social networks. The nature of young people’s experience of social capital relative to older people is summarised in Figure 10. Social support networks were identified for each of the age groups. Young people were more likely to talk to a friend, or a parent or guardian, whereas those aged 25 and over were more likely to talk to their spouse. The main factors affecting the sociability of young people were being in good health, having qualifications and being in employment. Those affecting their social networks were their sex, level of educational attainment and employment status.

Similar results were found in HOCS 2003 where young people reported higher levels of informal sociability than older people; 72 per cent of young people went out socially at least once a week compared with 51 per cent of those aged 25 to 34 and 35 per cent of older age groups.

**Figure 10: Difference in social capital for those aged 25 and over relative to young people**

*Logarithmic scale*



Odds ratios are shown with 95% confidence intervals. The odds are for those aged 25 and over relative to young people.

While qualitative research had indicated that young people are more likely to sign petitions and join demonstrations, this was not supported by the Omnibus Survey data. Approximately three in ten of the respondents in both age groups had signed a petition in the 12 months before interview. The proportions taking part in protests were low. Even though the questions relating to political interest were designed to be of relevance to young people, they were less interested in the issues than older age groups.

This study highlighted for the first time the level of participation by young people in providing informal help. Nearly two thirds of young people had provided some help in the previous year, mainly in providing childcare. The proportions of young people providing help were consistently lower than older adults for all other activities. Informal voluntary activity by young people was found to be higher in HOCS 2001 where 73 per cent of young people had participated in at least one form of voluntary activity in the preceding year, higher than all other age groups. This pattern was repeated in HOCS 2003 where young people again had the highest participation levels of informal volunteering of all respondents.

Married or cohabiting individuals with dependant children had larger social networks than those with no dependant children or single individuals. They were also more likely to think that young people had a high level of trust in adults.

The levels of civic participation were comparable with the findings in HOCS 2003 where 30 per cent of young people had participated in at least one form of civic activity compared with 43 per cent of those aged 25 to 49. Participation for those aged 75 and over was also 30 per cent.

The Omnibus study shows that young people do participate in the different dimensions of social capital, but at different rates than for older people. For example, young people were equally as likely as older people to discuss a single political issue or take part in a single voluntary activity. Older people were more likely to discuss large numbers of political issues and have a higher interest than young people in a range of political issues. They were also more likely to undertake social, civic and voluntary activities.

The levels of trust found in this study are of the same order as previously found by MORI (2003) and in the 2001 HOCS. Factors affecting trust were mainly educational attainment and employment status so that those in employment and those with qualifications were more likely to have higher levels of trust. A relationship was also seen between educational attainment and participation in the Home Office Findings on diversity, trust and community participation in England (2005). The likelihood of showing increased trust and participation in civic activities rose with levels of educational attainment. In the same report it was stated that older people were more likely to have higher levels of generalised trust (trust of others in their neighbourhood) compared with young people.

This analysis indicates that men were more likely to have higher rates of informal sociability than women. However women were more likely to have

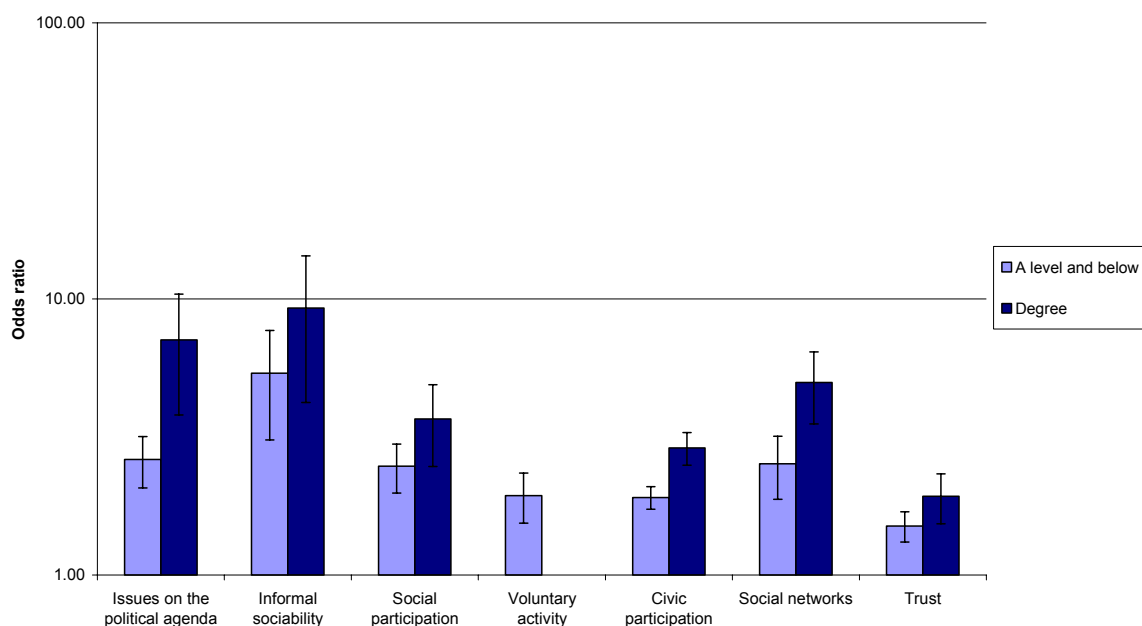
larger rates of social support networks, consistent with the results of the GHS 2000 analysis.

Educational attainment had a relationship with all dimensions of social capital. The level of participation rose with the level of qualifications with the exception of voluntary activity. [See Figure 11.]

Overall the regression analysis confirmed that taking all other factors into consideration, young people were less likely to participate in civic and voluntary activities, although there was no difference at a low level of volunteering. There was also little difference between young and older people at lower levels of interest in political issues.

**Figure 11: The impact of educational attainment on dimensions of social capital**

*Logarithmic scale*



Odds ratios are shown with 95% confidence intervals for statistically significant differences.

## 7. Conclusion

Young people were more likely to participate in informal social activities and to have larger social support networks than people aged 25 and over. However they were less likely to participate in social, civic and voluntary activities and were less interested in political issues than people aged 25 and over.

## References

- Charities Aid Foundation (2002) *Engaging young people in giving and charity*. Joseph Rowntree Foundation [online] Available: <http://www.jrf.org.uk/knowledge/findings/socialpolicy/N22.asp>
- Results from the social capital module of the GHS 2000: People's perception of their neighbourhood and community involvement
- 2001 Home Office Citizenship Survey: People, families and communities
- 2003 Home Office Citizenship Survey: People, families and communities
- Home Office Findings on diversity, trust and community participation in England (2005).
- Lister R (2001) *Why X doesn't hit the spot with our youth*. The Guardian [online] Available: <http://society.co.uk/2001election/comment/0,8146,50137,00.html>
- Lister R (2002) *Negotiating transitions to citizenship*. University of Loughborough (unpublished conference paper)
- MORI (2003) *Young people's attitudes towards politics*. Nestle Family Monitor Number Sixteen, July 2003 [online] Available: [www.nestlefamilymonitor.co.uk](http://www.nestlefamilymonitor.co.uk)
- National Centre for Social Research (2000) *Political interest and engagement among young people*. Joseph Rowntree Foundation [online] Available: <http://www.jrf.org.uk/knowledge/findings/socialpolicy/520.asp>
- Whiting E and Harper R (2003) *Young people and social capital*. Available: [http://www.statistics.gov.uk/socialcapital/downloads/youngpeople\\_final.pdf](http://www.statistics.gov.uk/socialcapital/downloads/youngpeople_final.pdf)

## Appendix

**Table 11: Summary of regression results**

	Political agenda	Informal sociability	Social part	Vol activity	Civic part	Social networks	Trust	YP trust adults	Adult trust YP
<b>Age</b>									
16-24	*	*	*	*	*	*	*	*	*
25 and over	+	-	+	+	+	-		-	+
<b>Sex</b>									
Male		*	*			*	*		
Female		- / + <sup>#</sup>	+			+	+		
<b>Ethnicity</b>									
White		*	*		*				
Non-White		-	-		-				
<b>Marital status</b>									
Single, divorced, widowed	*	*	*	*			*		*
Married/cohabiting	+	+	+	+			+		+
<b>Highest level of education</b>									
No qualifications	*	*	*	*	*	*	*		
A level or below	+	+	+	+	+	+	+		
Degree or higher degree	+	+	+		+	+	+		
<b>Full-time part-time work</b>									
Full-time	*	*		*	*				
Part-time	+			+	+				
<b>NS-SEC</b>									
<b>Managerial and professional occupations</b>									
Intermediate occupations		-	-	-			-		
Routine and manual occupations	-	-	-	-	-	-	-	-	-
Not classified			-			-			-
<b>Household type</b>									
Hrp married/cohabiting with dependant children				*		*		*	
Hrp married/cohabiting with no dependant children						-		-	
Hrp lone parent with dependant children									
One person only						-		-	
All others									
<b>Tenure</b>									
Own or buying home			*	*	*			*	*
Rental options			-	-	-			-	-
<b>Health problem limiting activity or work</b>									
Yes		*	*	*					
No		+	+	+					
<b>Employment status</b>									
In employment		*				*			*
Unemployed		-				-			
Economically inactive		-				-			+

\* Reference category (or comparison group) to which all other categories (of the same variable) have been compared

+ Statistically significant positive association with the outcome variable (<=5%)

- Statistically significant negative association with the outcome variable (<=5%)

Any categories left blank indicate that the relationship between that variable and the outcome variable was insignificant and thus the category was omitted from the model

# There is a statistically significant positive and a negative association at low and high levels of sociability respectively (see Table 13)

**Table 12: Issues on the political agenda**

Characteristics	Low interest			Medium interest			High interest		
	Odds ratio	95% Confidence interval	Number of cases	Odds ratio	95% Confidence interval	Number of cases	Odds ratio	95% Confidence interval	Number of cases
<b>Age</b>									
16-24	1.00	-	232	1.00	-	283	1.00	-	108
25 and over	1.10ns	0.59 - 2.04	768	1.44ns	0.78 - 2.67	1198	3.43***	1.74 - 6.74	924
<b>Marital status</b>									
Single, divorced, widowed	1.00	-	435	1.00	-	550	1.00	-	335
Married/cohabiting	1.75**	1.19 - 2.57	565	2.05***	1.40 - 3.00	931	2.08***	1.41 - 3.07	697
<b>Highest level of education</b>									
No qualifications	1.00	-	344	1.00	-	358	1.00	-	233
A level or below	1.66*	1.11 - 2.48	545	2.12***	1.42 - 3.16	859	2.62***	1.73 - 3.97	574
Degree	3.28*	1.31 - 8.24	110	4.40**	1.79 - 10.84	264	7.10***	2.85 - 17.65	225
<b>Full-time part-time work</b>									
Full-time	1.00	-	639	1.00	-	1021	1.00	-	653
Part-time	1.42ns	0.86 - 2.34	286	1.35ns	0.82 - 2.22	376	1.94**	1.18 - 3.20	323
<b>NS-SEC</b>									
Managerial and professional occupations	1.00	-	192	1.00	-	529	1.00	-	386
Intermediate occupations	1.48ns	0.74 - 2.96	199	0.88ns	0.45 - 1.73	304	0.90ns	0.45 - 1.79	209
Routine and manual occupations	1.08ns	0.60 - 1.95	473	0.46**	0.26 - 0.82	479	0.53*	0.30 - 0.95	343
Not classified	1.19ns	0.33 - 4.33	136	0.84ns	0.23 - 3.03	169	0.85ns	0.22 - 3.21	94

'No interest' is the comparison group

Significance of difference from the comparison group \*p<0.05, \*\*p<0.01 \*\*\*p<0.001, ns not significant

Low interest = interest in 1-4 issues

Medium interest = interest in 5-8 issues

High interest = interest in 9-12 issues

**Table 13: Informal sociability**

Characteristics	Low sociability			Medium sociability			High sociability		
	Odds ratio	95% Confidence interval	Number of cases	Odds ratio	95% Confidence interval	Number of cases	Odds ratio	95% Confidence interval	Number of cases
<b>Age</b>									
16-24	1.00	-	162	1.00	-	384	1.00	-	109
25 and over	0.22*	0.62 - 0.76	1624	0.06***	0.02 - 0.22	1048	0.04***	0.01 - 0.15	95
<b>Sex</b>									
Male	1.00	-	734	1.00	-	648	1.00	-	153
Female	1.38*	1.01 - 1.89	1052	1.14ns	0.81 - 1.60	783	0.35***	0.21 - 0.59	51
<b>Ethnicity</b>									
White	1.00	-	1636	1.00	-	1319	1.00	-	191
Non-White	0.40***	0.23 - 0.68	141	0.29***	0.16 - 0.51	111	0.09***	0.03 - 0.23	13
<b>Marital status</b>									
Single, divorced, widowed	1.00	-	594	1.00	-	577	1.00	-	131
Married/cohabiting	1.46*	1.11 - 1.94	1192	1.43*	1.05 - 1.94	854	0.75ns	0.45 - 1.24	73
<b>Highest level of education</b>									
No qualifications	1.00	-	674	1.00	-	184	1.00	-	14
A level or below	1.16ns	0.83 - 1.61	885	2.66***	1.84 - 3.84	918	5.39***	2.34 - 12.43	156
Degree	1.44ns	0.80 - 2.59	226	4.46***	2.42 - 8.22	329	9.27***	3.19 - 26.96	35
<b>Full-time part-time work</b>									
Full-time	1.00	-	1158	1.00	-	933	1.00	-	141
Part-time	1.41ns	0.96 - 2.08	523	1.43ns	0.95 - 2.16	441	0.65ns	0.33 - 1.29	39
<b>NS-SEC</b>									
Managerial and professional occupations	1.00	-	490	1.00	-	543	1.00	-	50
Intermediate occupations	0.67ns	0.43 - 1.04	387	0.50**	0.31 - 0.79	259	0.68ns	0.33 - 1.41	29
Routine and manual occupations	0.78ns	0.52 - 1.17	754	0.60*	0.39 - 0.92	441	0.97ns	0.51 - 1.87	65
Not classified	0.78ns	0.26 - 2.32	156	0.63ns	0.21 - 1.90	188	2.65ns	0.71 - 9.90	60
<b>Health problem limiting activity or work</b>									
Yes	1.00	-	416	1.00	-	151	1.00	-	10
No	1.73***	1.28 - 2.34	1364	2.22***	1.57 - 3.15	1280	4.12**	1.51 - 11.25	194
<b>Employment status</b>									
In employment	1.00	-	912	1.00	-	1057	1.00	-	157
Unemployed	0.42ns	0.17 - 1.03	49	0.29*	0.11 - 0.77	26	0.47ns	0.14 - 1.56	8
Economically inactive	0.45***	0.32 - 0.65	825	0.22***	0.15 - 0.33	348	0.12***	0.05 - 0.26	39

'No participation' is the comparison group

Significance of difference from the comparison group \*p<0.05, \*\*p<0.01 \*\*\*p<0.001, ns not significant

Low sociability = 1-3 activities

Medium sociability = 4-6 activities

High sociability = 7+ activities

**Table 14: Social Participation**

Characteristics	Low participation			Medium participation			High participation		
	Rate ratio	95% Confidence interval	Number of cases	Rate ratio	95% Confidence interval	Number of cases	Rate ratio	95% Confidence interval	Number of cases
<b>Age</b>									
16-24	1.00	-	263	1.00	-	238	1.00	-	92
25 and over	0.84ns	0.51 - 1.40	668	1.69*	1.00 - 2.84	1281	2.71**	1.54 - 4.78	908
<b>Sex</b>									
Male	1.00	-	449	1.00	-	670	1.00	-	411
Female	1.46*	1.05 - 2.05	482	1.85***	1.33 - 2.59	849	2.33***	1.64 - 3.32	589
<b>Ethnicity</b>									
White	1.00	-	819	1.00	-	1398	1.00	-	965
Non-White	0.56*	0.34 - 0.93	108	0.35***	0.21 - 0.58	116	0.14***	0.07 - 0.26	32
<b>Marital status</b>									
Single, divorced, widowed	1.00	-	462	1.00	-	533	1.00	-	270
Married/cohabiting	1.71**	1.19 - 2.47	469	2.30***	1.60 - 3.29	987	2.70***	1.86 - 3.93	730
<b>Highest level of education</b>									
No qualifications	1.00	-	332	1.00	-	395	1.00	-	185
A level or below	1.24ns	0.86 - 1.80	498	1.86**	1.29 - 2.69	875	2.48***	1.67 - 3.69	573
Degree	1.24ns	0.66 - 2.34	100	2.07*	1.11 - 3.90	248	3.68***	1.93 - 7.02	241
<b>NS-SEC</b>									
Managerial and professional occupations	1.00	-	170	1.00	-	486	1.00	-	456
Intermediate occupations	0.79ns	0.41 - 1.53	164	0.61ns	0.32 - 1.16	328	0.47*	0.25 - 0.90	214
Routine and manual occupations	0.56*	0.33 - 0.95	438	0.33***	0.19 - 0.55	549	0.22***	0.13 - 0.38	267
Not classified	0.52ns	0.27 - 1.04	159	0.39**	0.20 - 0.79	156	0.34**	0.16 - 0.71	61
<b>Tenure</b>									
Own or buying home	1.00	-	584	1.00	-	1137	1.00	-	854
Rental options	0.66*	0.46 - 0.94	342	0.48***	0.34 - 0.69	379	0.29***	0.20 - 0.43	142
<b>Health problem limiting activity or work</b>									
Yes	1.00	-	213	1.00	-	259	1.00	-	154
No	1.23ns	0.83 - 1.83	716	1.64*	1.11 - 2.43	1257	1.64*	1.08 - 2.48	846

'No participation' is the comparison group

Significance of difference from the comparison group \*p<0.05, \*\*p<0.01 \*\*\*p<0.001, ns not significant

Low participation = 1-2 activities

Medium participation = 3-4 activities

High participation = 5-9 activities

**Table 15: Voluntary activity**

Characteristics	Low activity			High activity		
	Odds ratio	95% Confidence interval	Number of cases	Odds ratio	95% Confidence interval	Number of cases
<b>Age</b>						
16-24	1.00	-	401	1.00	-	21
25 and over	1.02ns	0.73 - 1.41	1858	2.57*	1.17 - 5.65	264
<b>Marital status</b>						
Single, divorced, widowed	1.00	-	821	1.00	-	68
Married/cohabiting	1.53*	1.05 - 2.22	1439	3.20**	1.33 - 7.68	217
<b>Highest level of education</b>						
No qualifications	1.00	-	583	1.00	-	60
A level or below	1.25*	1.02 - 1.54	1300	1.94**	1.31 - 2.90	185
Degree	0.89ns	0.66 - 1.19	376	0.86ns	0.49 - 1.51	40
<b>Full-time part-time work</b>						
Full-time	1.00	-	1469	1.00	-	196
Part-time	1.33**	1.09 - 1.62	673	1.25ns	0.89 - 1.77	82
<b>Household type</b>						
Hrp married/cohabiting with dependant children	1.00	-	675	1.00	-	84
Hrp married/cohabiting with no dependant children	0.91ns	0.72 - 1.14	934	1.06ns	0.72 - 1.56	131
Hrp lone parent with dependant children	1.94 <sup>aa</sup>	1.16 - 3.26	147	3.63 <sup>aa</sup>	1.36 - 9.72	17
One person only	1.14ns	0.75 - 1.74	291	1.89ns	0.74 - 4.84	29
All others	0.88ns	0.58 - 1.31	211	1.32ns	0.62 - 2.81	23
<b>NS-SEC</b>						
Managerial and professional occupations	1.00	-	734	1.00	-	108
Intermediate occupations	0.86ns	0.67 - 1.11	483	0.56*	0.36 - 0.88	48
Routine and manual occupations	0.70**	0.55 - 0.88	803	0.75ns	0.51 - 1.10	111
Not classified	0.77ns	0.46 - 1.29	239	1.13ns	0.42 - 3.03	18
<b>Tenure</b>						
Own or buying home	1.00	-	1705	1.00	-	226
Rental options	0.71**	0.58 - 0.86	545	0.65*	0.45 - 0.94	58
<b>Health problem limiting activity or work</b>						
Yes	1.00	-	391	1.00	-	39
No	1.23*	1.01 - 1.51	1865	1.61*	1.06 - 2.44	246

'No activity' is the comparison group

Significance of difference from the comparison group \*p<0.05, \*\*p<0.01 \*\*\*p<0.001, ns not significant

Low volunteering = 1-4 activities

High volunteering = 5-8 activities

<sup>a</sup> This is a spurious result due to the small numbers of lone parents aged between 16 and 24.

**Table 16: Civic participation**

Characteristics	Participation		
	Odds ratio	95% Confidence interval	Number of cases
<b>Age</b>			
16-24	1.00	-	246
25 and over	2.33***	1.74 - 3.13	1428
<b>Ethnicity</b>			
White	1.00	-	1562
Non-White	0.61**	0.42 - 0.88	110
<b>Highest level of education</b>			
No qualifications	1.00	-	330
A level or below	1.91***	1.58 - 2.30	980
Degree	2.89***	2.21 - 3.78	364
<b>Full-time part-time work</b>			
Full-time	1.00	-	1096
Part-time	1.21*	1.02 - 1.43	493
<b>NS-SEC</b>			
Managerial and professional occupations	1.00	-	614
Intermediate occupations	1.05ns	0.85 - 1.31	363
Routine and manual occupations	0.80*	0.65 - 0.98	521
Not classified	1.57ns	0.97 - 2.52	176
<b>Tenure</b>			
Own or buying home	1.00	-	1227
Rental options	0.83*	0.70 - 0.99	391

'No participation' is the comparison group

Significance of difference from the comparison group \*p<0.05, \*\*p<0.01 \*\*\*p<0.001, ns not significant

**Table 17: Social Networks**

Characteristics	Medium networks			Large networks		
	Rate ratio	95% Confidence interval	Number of cases	Rate ratio	95% Confidence interval	Number of cases
<b>Age</b>						
16-24	1.00	-	334	1.00	-	100
25 and over	0.53***	0.40 - 0.71	1281	0.33***	0.22 - 0.50	251
<b>Sex</b>						
Male	1.00	-	615	1.00	-	124
Female	1.95***	1.66 - 2.29	1000	2.50***	1.89 - 3.30	227
<b>Highest level of education</b>						
No qualifications	1.00	-	368	1.00	-	28
A level or below	1.59***	1.30 - 1.94	967	2.53***	1.53 - 4.19	210
Degree	2.03***	1.53 - 2.69	279	4.98***	2.81 - 8.82	113
<b>Employment status</b>						
In employment	1.00	-	979	1.00	-	298
Unemployed	0.77ns	0.44 - 1.35	35	0.19*	0.05 - 0.79	3
Economically inactive	0.97ns	0.81 - 1.16	599	0.34***	0.23 - 0.50	51
<b>Household type</b>						
Hrp married/cohabiting with dependant children	1.00	-	500	1.00	-	133
Hrp married/cohabiting with no dependant children	0.82ns	0.66 - 1.00	639	0.66*	0.47 - 0.93	114
Hrp lone parent with dependant children	1.01ns	0.72 - 1.43	117	0.79ns	0.45 - 1.38	20
One person only	0.65***	0.52 - 0.81	193	0.63*	0.43 - 0.92	33
All others	0.77ns	0.56 - 1.06	165	0.91ns	0.55 - 1.49	50
<b>NS-SEC</b>						
Managerial and professional occupations	1.00	-	492	1.00	-	159
Intermediate occupations	1.03ns	0.82 - 1.29	334	0.83	0.57 - 1.21	69
Routine and manual occupations	1.01ns	0.82 - 1.25	602	0.63*	0.43 - 0.93	86
Not classified	0.59**	0.41 - 0.85	186	0.40**	0.22 - 0.75	36

'Low social support' is the comparison group

Significance of difference from the comparison group \*p<0.05, \*\*p<0.01 \*\*\*p<0.001, ns not significant

Medium support = 2-3 people

High support = 4+ people

**Table 18: Trust**

Characteristics	Medium trust			High trust		
	Odds ratio	95% Confidence interval	Number of cases	Odds ratio	95% Confidence interval	Number of cases
<b>Age</b>						
16-24	1.00	-	226	1.00	-	338
25 and over	0.85ns	0.57 - 1.27	1137	0.81ns	0.56 - 1.19	1374
<b>Sex</b>						
Male	1.00	-	648	1.00	-	716
Female	1.13ns	0.91 - 1.40	715	1.40**	1.14 - 1.73	997
<b>Marital status</b>						
Single, divorced, widowed	1.00	-	471	1.00	-	685
Married/cohabiting	1.38**	1.11 - 1.72	892	1.20ns	0.97 - 1.48	1027
<b>Highest level of education</b>						
No qualifications	1.00	-	330	1.00	-	439
A level or below	1.66***	1.29 - 2.14	786	1.51***	1.18 - 1.93	970
Degree	2.05***	1.36 - 3.09	246	1.93***	1.29 - 2.89	303
<b>NS-SEC</b>						
Managerial and professional occupations	1.00	-	466	1.00	-	546
Intermediate occupations	0.70*	0.50 - 0.97	283	0.68*	0.49 - 0.94	333
Routine and manual occupations	0.57***	0.42 - 0.78	482	0.59***	0.43 - 0.79	605
Not classified	0.61ns	0.36 - 1.04	132	0.79ns	0.48 - 1.31	228

'Low trust' is the comparison group

Significance of difference from the comparison group \*p<0.05, \*\*p<0.01 \*\*\*p<0.001, ns not significant

**Table 19: Young people's trust in adults**

Characteristics	High trust		
	Odds ratio	95% Confidence interval	Number of cases
<b>Age</b>			
16-24	1.00	-	366
25 and over	0.70**	0.54 - 0.90	1337
<b>NS-SEC</b>			
Managerial and professional occupations	1.00	-	573
Intermediate occupations	0.86ns	0.70 - 1.05	339
Routine and manual occupations	0.69***	0.58 - 0.82	557
Not classified	0.99ns	0.71 - 1.37	235
<b>Tenure</b>			
Own or buying home	1.00	-	1297
Rental options	0.77**	0.65 - 0.92	402
<b>Household type</b>			
Hrp married/cohabiting with dependant children	1.00	-	559
Hrp married/cohabiting with no dependant children	0.75**	0.62 - 0.90	668
Hrp lone parent with dependant children	0.77ns	0.56 - 1.06	98
One person only	0.64***	0.52 - 0.78	194
All others	0.78ns	0.58 - 1.04	184

'Low trust' is the comparison group

Significance of difference from the comparison group \*p<0.05, \*\*p<0.01 \*\*\*p<0.001, ns not significant

**Table 20: Adults' trust in young people**

Characteristics	High trust		
	Odds ratio	95% Confidence interval	Number of cases
<b>Age</b>			
16-24	1.00	-	121
25 and over	1.77***	1.32 - 2.38	1104
<b>Marital status</b>			
Single, divorced, widowed	1.00	-	363
Married/cohabiting	1.35***	1.15 - 1.59	862
<b>Employment status</b>			
In employment	1.00	-	667
Unemployed	1.01ns	0.57 - 1.78	21
Economically inactive	1.71***	1.45 - 2.01	537
<b>NS-SEC</b>			
Managerial and professional occupations	1.00	-	428
Intermediate occupations	0.98ns	0.80 - 1.21	276
Routine and manual occupations	0.78*	0.65 - 0.94	432
Not classified	0.66*	0.45 - 0.95	88
<b>Tenure</b>			
Own or buying home	1.00	-	957
Rental options	0.76**	0.63 - 0.92	264

'Low trust' is the comparison group

Significance of difference from the comparison group \*p<0.05, \*\*p<0.01 \*\*\*p<0.001, ns not significant

*National Statistics Omnibus Survey – Question Set*

Module 335 Young People and Social Capital

**ASK IF:** QSETUP.RAGE < 25

Intro1

The next few questions are about young people and how they view, and interact in, their communities. They are being asked on behalf of the Office for National Statistics and the Department for Education and Skills. I will begin by asking you about the kind of things you do and talk about with people you know.

(1) PRESS <1> TO CONTINUE

**ASK IF:** QSETUP.RAGE < 25

M335\_1M

SHOWCARD C335\_1M

Do you talk about any of the following issues with friends, family or work colleagues?

CODE ALL THAT APPLY

SET [12] OF

- (1) Terrorist attacks in the world
- (2) Cruelty to animals
- (3) Hunger in poor countries
- (4) Illegal drug-taking
- (5) Pollution/green issues
- (6) Wars taking place in the world
- (7) Crime
- (8) Quality of education/training
- (9) Government benefits e.g. child support, job seeker's allowance.
- (10) Bullying
- (11) Racial prejudice
- (12) Other (Please Specify)
- (13) None of these

**ASK IF:** QSETUP.RAGE < 25

**AND:** Other IN M335\_1M

SPEC1

INTERVIEWER: PLEASE RECORD OTHER  
REMEMBER TO RE-CODE 1 TO 11 WHERE POSSIBLE

STRING[255]

**ASK IF:** QSETUP.RAGE < 25

M335\_2M

SHOWCARD C335\_2M

The following is a list of things people do for fun, with others. Have you done any of these things in the **past month** that is since <text fill for BLAISE calculation of date one month ago>, but not as part of an organised group or club?

INTERVIEWER: IF YOU SUSPECT A SPORT IS PLAYED AS A SCHOOL OR FORMAL ACTIVITY, PROBE AND DO NOT CODE THOSE SPORTS  
RESPONDENT PLAYS ONLY AS A SCHOOL OR FORMAL ACTIVITY.  
CODE ALL THAT APPLY

SET [10] OF

- (1) Played a sport e.g. football, basketball, skateboarding
- (2) Went shopping with others
- (3) Went to an amusement arcade, amusement park
- (4) Attended a live football match or other sport
- (5) Went to a party, nightclub or disco
- (6) Played snooker, darts or pool
- (7) Went to a pub, restaurant, cinema or concert
- (8) Hung around with friends for no particular reason e.g. in the park or town centre
- (9) Went to a friend's house
- (10) Other (Please specify)
- (11) None of these

**ASK IF:** QSETUP.RAGE < 25

**AND:** Other IN M335\_2M

SPEC2

INTERVIEWER: PLEASE RECORD OTHER  
REMEMBER TO RE-CODE 1 TO 9 WHERE POSSIBLE

STRING[255]

**ASK IF:** QSETUP.RAGE < 25

M335\_3aM

SHOWCARD C335\_3aM

When you've been really upset about something, who did you talk to about it?

INTERVIEWER: PROMPT 'ANYONE ELSE?'

CODE ALL THAT APPLY

SET [9] OF

- (1) A friend
- (2) Boyfriend/girlfriend
- (3) Spouse
- (4) Parent or guardian
- (5) Brother/sister
- (6) Other family member
- (7) School or college teacher
- (8) Work colleague or boss
- (9) Other (Please specify)
- (10) No-one

(11) Have never been really upset about anything (SPONTANEOUS ONLY)

**ASK IF:** QSETUP.RAGE < 25

**AND:** alljoy IN M335\_3aM

M335\_3bM

SHOWCARD M335\_3aM

[\*] If you **were** really upset about something, who would you talk to about it?

INTERVIEWER: PROMPT 'ANYONE ELSE?'

CODE ALL THAT APPLY

SET [8] OF

- (1) A friend

- (2) Boyfriend/girlfriend
- (3) Spouse
- (4) Parent or guardian
- (5) Brother/sister
- (6) Other family member
- (7) School or college teacher
- (8) Work colleague or boss
- (9) Other (Please specify)
- (10) No-one

**ASK IF:** QSETUP.RAGE < 25

**AND:** (Other IN M335\_3aM) OR (Other IN M335\_3bM)

SPEC3

INTERVIEWER: PLEASE RECORD OTHER  
REMEMBER TO RE-CODE 1 TO 7 WHERE POSSIBLE

STRING[255]

**ASK IF:** QSETUP.RAGE < 25

Intro2

The next few questions are about how much trust people have in others and in organisations.

(1) PRESS <1> TO CONTINUE

**ASK IF:** QSETUP.RAGE < 25

M335\_4a

SHOWCARD C335\_4a

Taking your answer from this list, can you tell me how much you trust the police?

- (1) A lot
- (2) A fair amount
- (3) Not very much
- (4) Not at all
- (5) No opinion/Don't know/No experience

**ASK IF:** QSETUP.RAGE < 25

M335\_4b

SHOWCARD C335\_4a

(Taking your answer from this list, can you tell me how much you) trust the courts  
(Magistrates Courts and Crown Courts)?

- (1) A lot
- (2) A fair amount
- (3) Not very much
- (4) Not at all
- (5) No opinion/Don't know/No experience

**ASK IF:** QSETUP.RAGE < 25

**AND:** QSETUP.COUNTRY = Wales

M335\_4d

SHOWCARD C335\_4a

(Taking your answer from this list, can you tell me how much you) trust the Welsh  
Assembly?

- (1) A lot
- (2) A fair amount
- (3) Not very much
- (4) Not at all
- (5) No opinion/Don't know/No experience

**ASK IF:** QSETUP.RAGE < 25

**AND:** QSETUP.COUNTRY = Scotland

M335\_4e

SHOWCARD C335\_4a

(Taking your answer from this list, can you tell me how much you) trust the Scottish Executive?

- (1) A lot
- (2) A fair amount
- (3) Not very much
- (4) Not at all
- (5) No opinion/Don't know/No experience

**ASK IF:** QSETUP.RAGE < 25

M335\_4c

SHOWCARD C335\_4a

(Taking your answer from this list, can you tell me how much you) trust the Government?

- (1) A lot
- (2) A fair amount
- (3) Not very much
- (4) Not at all
- (5) No opinion/Don't know/No experience

**ASK IF:** QSETUP.RAGE < 25

M335\_4f

SHOWCARD C335\_4a

(Taking your answer from this list, can you tell me how much you) trust teachers or lecturers?

- (1) A lot
- (2) A fair amount
- (3) Not very much
- (4) Not at all
- (5) No opinion/Don't know/No experience

**ASK IF:** QSETUP.RAGE < 25

M335\_4g

SHOWCARD C335\_4a

(Taking your answer from this list, can you tell me how much you) trust religious leaders?

- (1) A lot
- (2) A fair amount
- (3) Not very much
- (4) Not at all
- (5) No opinion/Don't know/No experience

**ASK IF:** QSETUP.RAGE < 25

M335\_5a

SHOWCARD C335\_5a

[\*] Taking your answer from this list, in general how much trust do you think **young people** have in **adults** today?

INTERVIEWER: LET RESPONDENT DEFINE 'ADULT' AND 'YOUNG' PERSON FOR THEMSELVES

- (1) A lot
- (2) A fair amount
- (3) Not very much
- (4) Not at all

(5) No experience / Don't know (SPONTANEOUS ONLY)

**ASK IF:** QSETUP.RAGE < 25

M335\_5b

SHOWCARD C335\_5a

[\*] And, (Taking your answer from this list,) in general how much trust do you think **adults** have in **young people** today?

INTERVIEWER: LET RESPONDENT DEFINE 'ADULT' AND 'YOUNG' PERSON FOR THEMSELVES

- (1) A lot
- (2) A fair amount
- (3) Not very much
- (4) Not at all

(5) No experience / Don't know (SPONTANEOUS ONLY)

**ASK IF:** QSETUP.RAGE < 25

M335\_6M

SHOWCARD C335\_6M

In the last **12 months** that is since <text fill BLAISE calculation for date 12 months ago> have you done any of the following?

CODE ALL THAT APPLY

SET [9] OF

- (1) Recycled used materials (E.g. glass, cans, paper, clothes)
- (2) Bought fair trade goods or anything in a charity shop
- (3) Given money or goods to the homeless
- (4) Bought the Big Issue
- (5) Given money or goods to other charitable causes e.g. Cancer Research, school jumble sales
- (6) Collected money or took part in a sponsored event for a charity
- (7) Sponsored someone else
- (8) Organised a charitable event
- (9) Other things for a good cause (Please specify)
- (10) None of these

**ASK IF:** QSETUP.RAGE < 25

**AND:** Other IN M335\_6M

SPEC6

INTERVIEWER: PLEASE RECORD OTHER  
REMEMBER TO RE-CODE 1 TO 8 WHERE POSSIBLE

STRING[255]

**Ask IF:** QSETUP.RAGE < 25

M335\_7M

SHOWCARD M335\_7M

Still thinking of the last **12 months**, have you done any of these things **unpaid** for anyone who **doesn't** live in your home? Please do not include any help you gave as a volunteer for an organisation or group?

CODE ALL THAT APPLY

SET [8] OF

- (1) Keeping in touch with someone who has difficulty getting out and about
- (2) Shopping for someone
- (3) Household jobs or gardening for someone
- (4) Decorating or repairs for someone
- (5) Looking after children for someone
- (6) Writing letters or filling in forms for someone
- (7) Looking after someone who is sick e.g. helping them take their medication/  
get dressed
- (8) Other (Please specify)
- (9) None of these

**Ask IF:** QSETUP.RAGE < 25

**AND:** sick IN M335\_7M

spec7B

INTERVIEWER: PLEASE RECORD WHAT RESPONDENT DID FOR SOMEONE  
WHO WAS SICK.

STRING[255]

**Ask IF:** QSETUP.RAGE < 25

**AND:** Other IN M335\_7M

SPEC7

INTERVIEWER: PLEASE RECORD OTHER  
REMEMBER TO RE-CODE 1 TO 6 WHERE POSSIBLE

STRING[255]

**Ask IF:** QSETUP.RAGE < 25

M335\_8A

Have you done anything to show concern for an issue in the past 12 months?

INTERVIEWER: IF YES, PROBE WHAT THEY HAVE DONE  
OPEN RESPONSE - PRESS <ALT+S> TO SAVE TEXT, <INSERT> TO EDIT  
TEXT OR <ESC> TO ABANDON

OPEN

**Ask IF:** QSETUP.RAGE < 25

M335\_8M

SHOWCARD C335\_8M

May I just check , have you done any of the following to show concern for an issue

in the last **12 months**?

CODE ALL THAT APPLY

SET [8] OF

- (1) Took part in a protest
- (2) Contacted a radio or TV station or newspaper
- (3) Contacted a local councillor or MP
- (4) Contacted the appropriate organisation to deal with an issue, such as the council
- (5) Attended a public meeting
- (6) Attended a tenants' or local residents' group
- (7) Helped organise a petition
- (8) Attended a school/college/club committee
  
- (9) Thought about it but did not do anything (SPONTANEOUS ONLY)
- (10) None of these (SPONTANEOUS ONLY)